

Critical Reasoning Test Battery norm group: South African general population updated 2010

Sample composition

The sample consisted of South Africans tested by Psytech South Africa and collaborators in the period leading up to January 2010. Not all respondents completed both subtests of the Critical Reasoning Test Battery, therefore the biographical particulars are reported separately for the Numerical Critical Reasoning Test and the Verbal Critical Reasoning Test respectively.

Sample composition: Numerical Critical Reasoning Test

Category	Frequency table: Sex			
	Count	Cumulative Count	Percent	Cumulative Percent
M	3038	3038	64.46000	64.4600
F	1654	4692	35.09442	99.5544
U	21	4713	0.44558	100.0000
Missing	0	4713	0.00000	100.0000

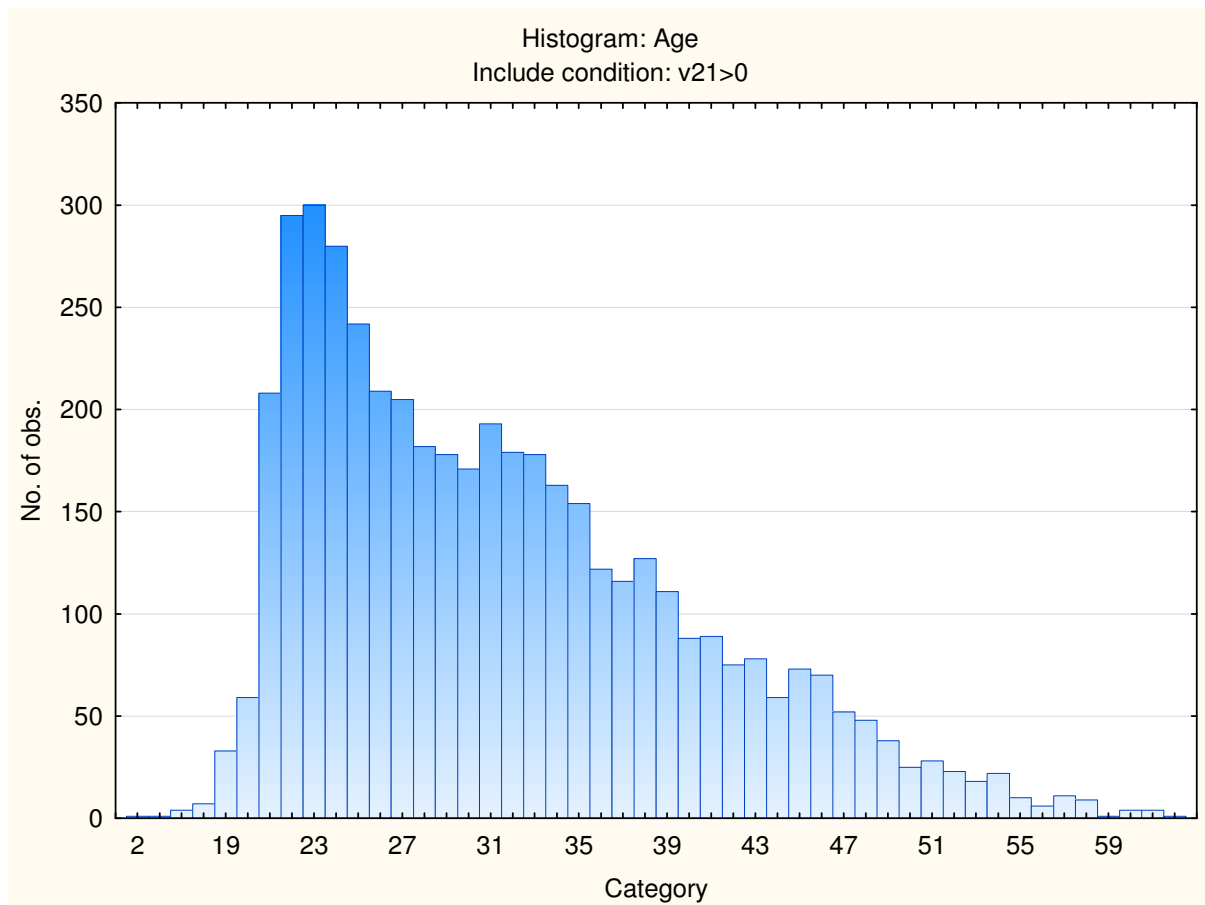
Category	Frequency table: Education Group			
	Count	Cumulative Count	Percent	Cumulative Percent
Post Graduate	535	535	11.35158	11.3516
Diploma	779	1314	16.52875	27.8803
Grade 12	450	1764	9.54806	37.4284
Degree	818	2582	17.35625	54.7846
<Grade 12	25	2607	0.53045	55.3151
Vocational Training	64	2671	1.35795	56.6730
Missing	2042	4713	43.32697	100.0000

Category	Frequency table: Language			
	Count	Cumulative Count	Percent	Cumulative Percent
English	1147	1147	24.33694	24.3369
Setswana	144	1291	3.05538	27.3923
Afrikaans	463	1754	9.82389	37.2162
isiZulu	364	2118	7.72332	44.9395
Xitsonga	44	2162	0.93359	45.8731
isiXhosa	278	2440	5.89858	51.7717
Sepedi	77	2517	1.63378	53.4055
Tshivenda	45	2562	0.95481	54.3603
isiNdebele	11	2573	0.23340	54.5937
siSwati	19	2592	0.40314	54.9968
Sesotho	179	2771	3.79801	58.7948
Missing	1942	4713	41.20518	100.0000

Category	Frequency table: Language Group			
	Count	Cumulative Count	Percent	Cumulative Percent
English	1147	1147	24.33694	24.3369
Indigenous	1161	2308	24.63399	48.9709
Afrikaans	463	2771	9.82389	58.7948
Missing	1942	4713	41.20518	100.0000

Category	Frequency table: Race Group			
	Count	Cumulative Count	Percent	Cumulative Percent
Asian	446	446	9.46319	9.4632
European	1016	1462	21.55739	31.0206
African	1336	2798	28.34712	59.3677
Coloured	135	2933	2.86442	62.2321
Missing	1780	4713	37.76788	100.0000

Variable	Descriptive Statistics: Age					
	Mean	Std.Dev	Minimum	Maximum	N	No.cases Missing
Age	31.49451	8.591961	2.000000	63.00000	4550	163



Sample composition: Verbal Critical Reasoning test

Category	Frequency table: Sex			
	Count	Cumulative Count	Percent	Cumulative Percent
M	3164	3164	64.63739	64.6374
F	1707	4871	34.87232	99.5097
U	24	4895	0.49030	100.0000
Missing	0	4895	0.00000	100.0000

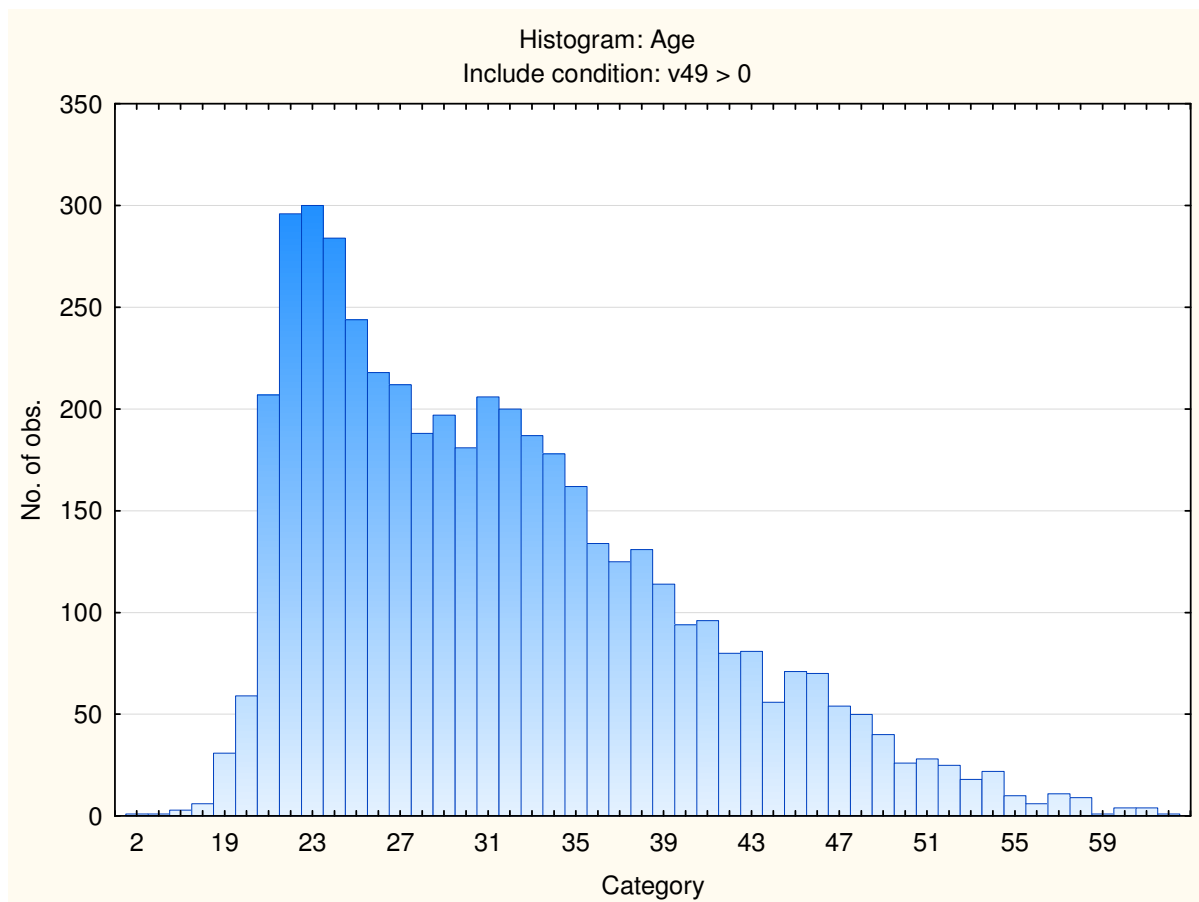
Category	Frequency table: Education Group			
	Count	Cumulative Count	Percent	Cumulative Percent
Post Graduate	577	577	11.78754	11.7875
Diploma	783	1360	15.99591	27.7835
Grade 12	444	1804	9.07048	36.8539
Degree	857	2661	17.50766	54.3616
<Grade 12	24	2685	0.49030	54.8519
Vocational Training	63	2748	1.28703	56.1389
Missing	2147	4895	43.86108	100.0000

Category	Frequency table: Language			
	Count	Cumulative Count	Percent	Cumulative Percent
English	1173	1173	23.96323	23.9632
Setswana	146	1319	2.98264	26.9459
Afrikaans	494	1813	10.09193	37.0378
isiZulu	357	2170	7.29316	44.3309
Xitsonga	43	2213	0.87845	45.2094
isiXhosa	277	2490	5.65884	50.8682
Sepedi	79	2569	1.61389	52.4821
Tshivenda	47	2616	0.96016	53.4423
isiNdebele	10	2626	0.20429	53.6466
siSwati	20	2646	0.40858	54.0552
Sesotho	178	2824	3.63636	57.6915
Missing	2071	4895	42.30848	100.0000

Category	Frequency table: Language Group			
	Count	Cumulative Count	Percent	Cumulative Percent
English	1173	1173	23.96323	23.9632
Indigenous	1157	2330	23.63636	47.5996
Afrikaans	494	2824	10.09193	57.6915
Missing	2071	4895	42.30848	100.0000

Category	Frequency table: Race Group			
	Count	Cumulative Count	Percent	Cumulative Percent
Asian	453	453	9.25434	9.2543
European	1065	1518	21.75689	31.0112
African	1338	2856	27.33401	58.3453
Coloured	136	2992	2.77835	61.1236
Missing	1903	4895	38.87640	100.0000

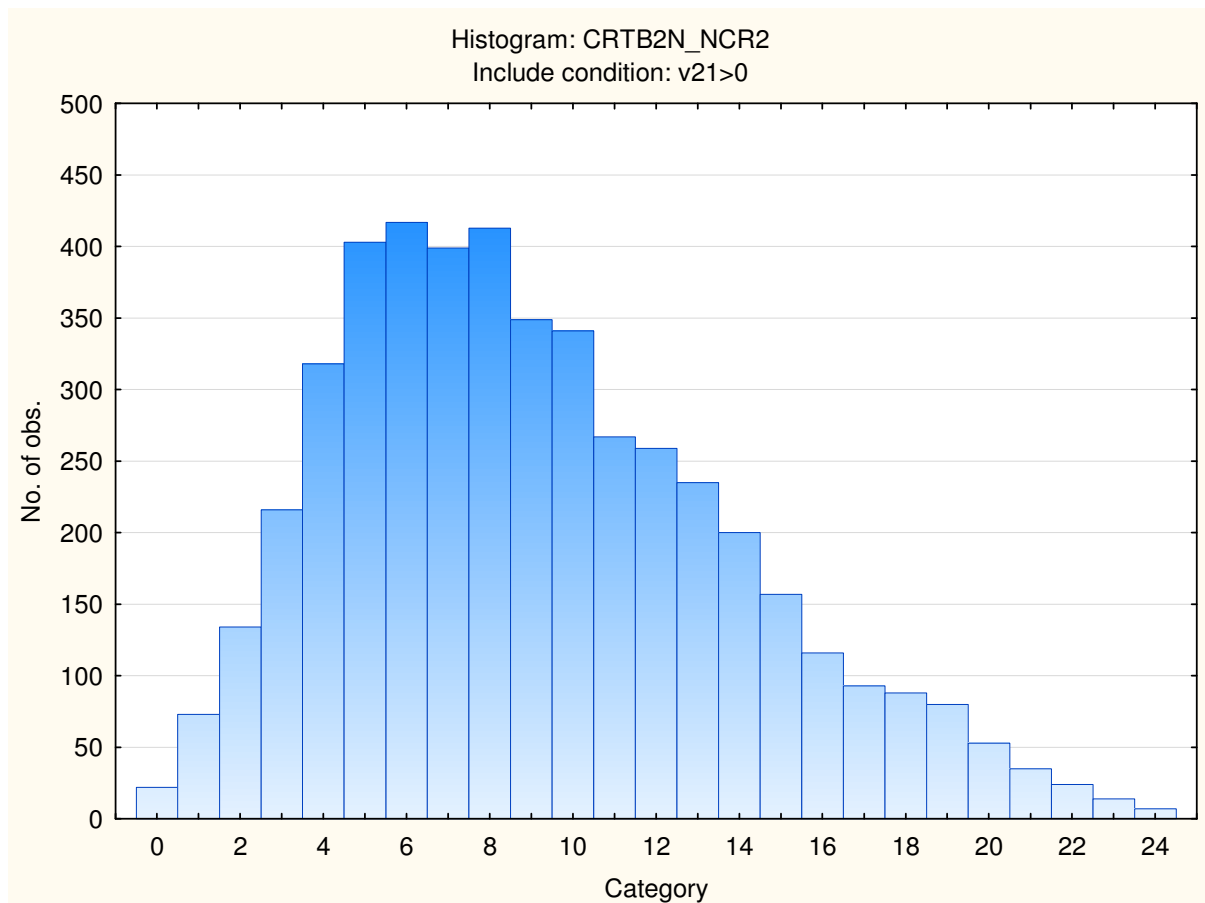
Variable	Descriptive Statistics: Age					
	Mean	Std.Dev	Minimum	Maximum	N	No.cases Missing
Age	31.57518	8.499795	2.000000	63.00000	4722	173



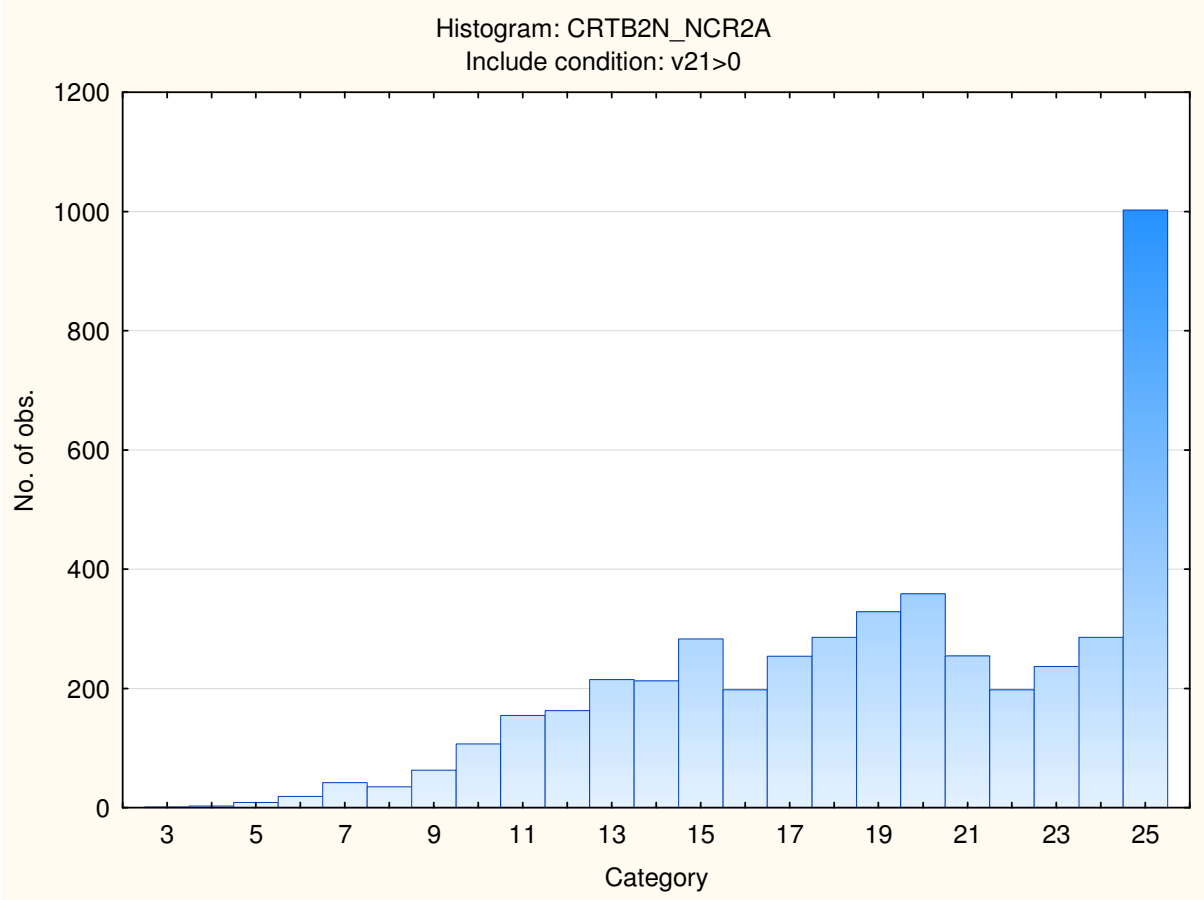
Descriptive statistics for Critical Reasoning Test Battery scales

Variable		Descriptive Statistics					
		Mean	Std.Dev	Minimum	Maximum	N	No.cases Missing
Numerical Reasoning	Critical	9.13113	4.734437	0.000000	24.00000	4713	0
Numerical Reasoning attempted	Critical items	18.93359	5.045006	3.000000	25.00000	4713	0
Verbal Reasoning	Critical	15.48315	7.180867	0.000000	38.00000	4895	0
Verbal Reasoning attempted	Critical items	29.48417	8.841802	1.000000	40.00000	4895	0

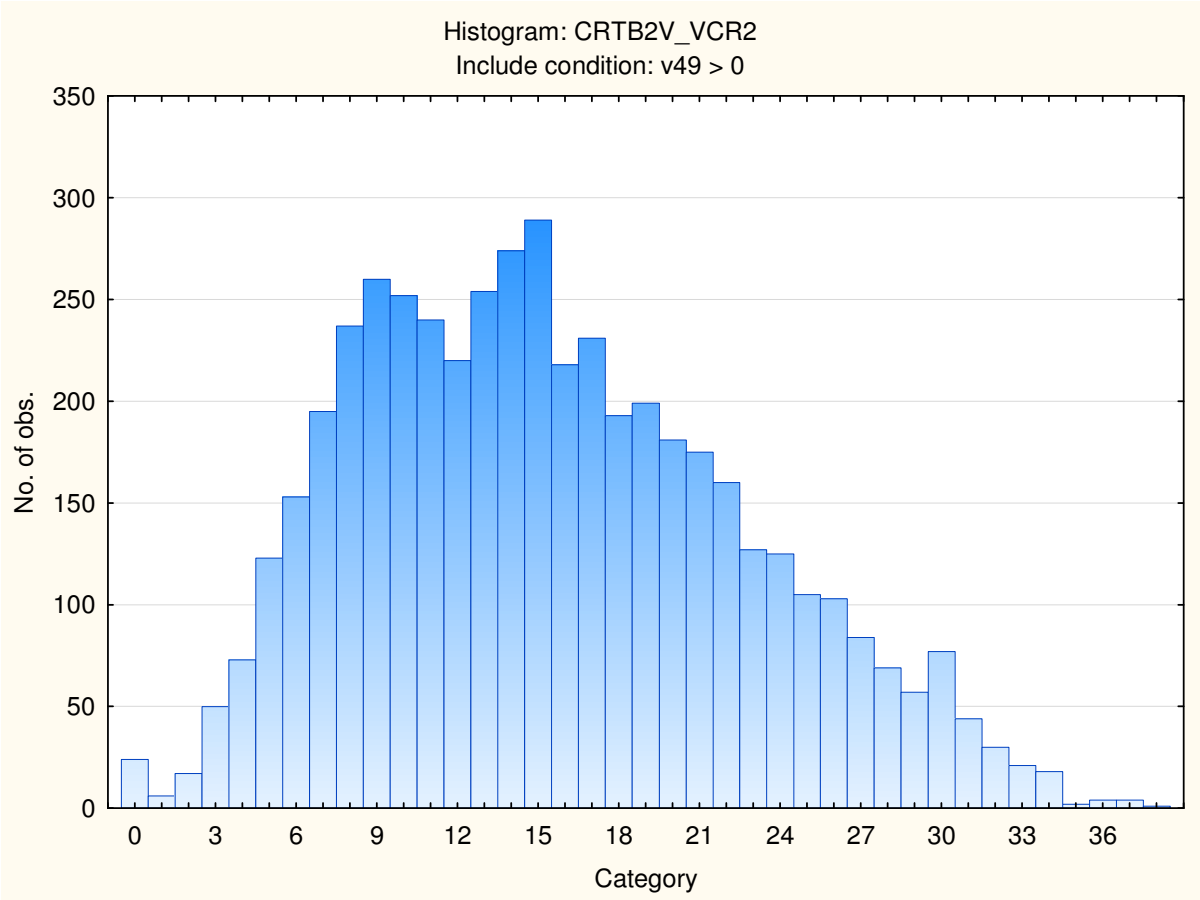
Frequency distribution: Numerical Critical Reasoning Test



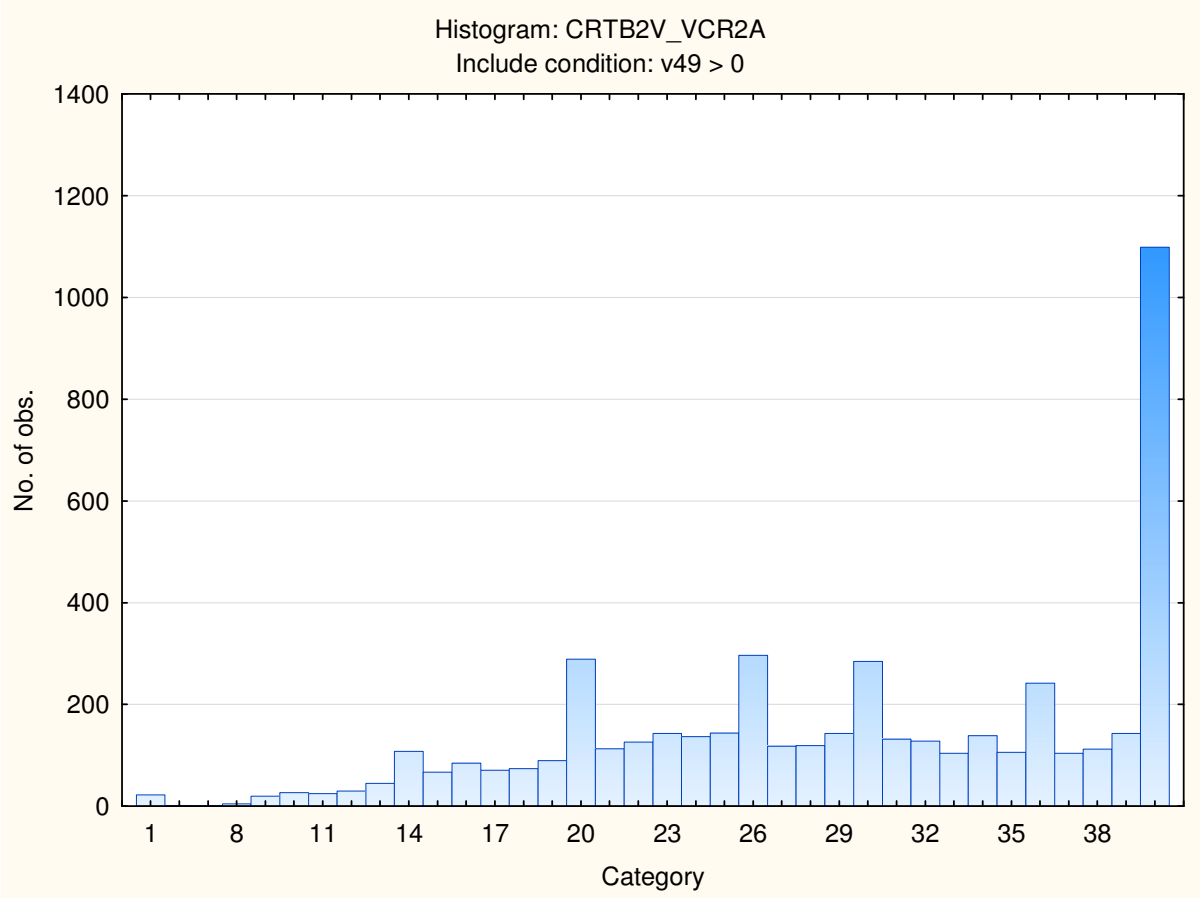
Frequency distribution: Numerical Critical Reasoning Test items attempted



Frequency distribution: Verbal Critical Reasoning Test



Frequency distribution: Verbal Critical Reasoning Test items attempted



Stanine table

	S9_1	S9_2	S9_3	S9_4	S9_5	S9_6	S9_7	S9_8	S9_9
NCR2 Numerical Critical Reasoning	0-0	1-3	4-5	6-7	8-10	11-12	13-15	16-17	18-24
NCR2 Items Attempted	3-10	11-12	13-15	16-17	18-20	21-22	23-25		
VCR2 Verbal Critical Reasoning	0-2	3-6	7-10	11-13	14-17	18-20	21-24	25-28	29-38
VCR2 Items Attempted	1-14	15-18	19-22	23-27	28-31	32-36	37-40		