

Values and Motives Inventory (VMI)

Norm Group: SA Aggregate Population, Updated 2016

Norm Type:

Standard deviation norm

Sample Composition

Compiled from raw data on 8357 respondents submitted by various clients as well as collected by Psytech SA and collaborators, via GeneSys for Windows, in the period up to November 2013.

Biographical Composition

Category	Frequency table: Sex			
	Count	Cumulative Count	Percent	Cumulative Percent
M	4551	4551	54,45734	54,4573
F	3783	8334	45,26744	99,7248
U	23	8357	0,27522	100,0000
Missing	0	8357	0,00000	100,0000

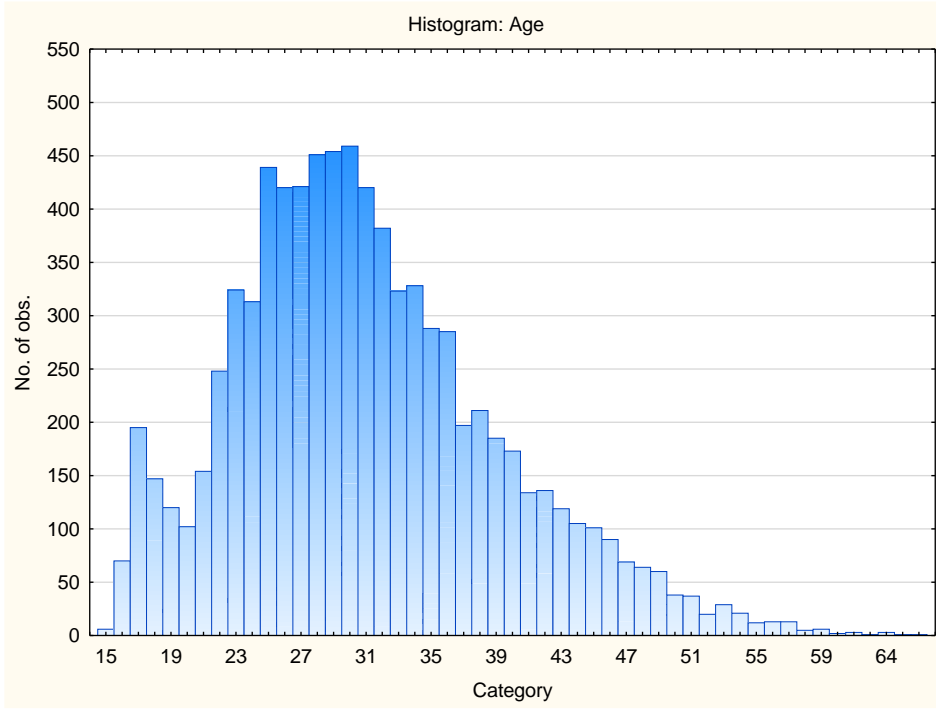
Category	Frequency table: Education			
	Count	Cumulative Count	Percent	Cumulative Percent
Grade 12	568	568	6,79670	6,7967
Tertiary	308	876	3,68553	10,4822
Tertiary Certificate/Trade	286	1162	3,42228	13,9045
Post Graduate	295	1457	3,52997	17,4345
< Matric	66	1523	0,78976	18,2242
Missing	6834	8357	81,77576	100,0000

Category	Frequency table: Language			
	Count	Cumulative Count	Percent	Cumulative Percent
English	703	703	8,41211	8,4121
isiZulu	154	857	1,84277	10,2549
Setswana	93	950	1,11284	11,3677
Xitsonga	30	980	0,35898	11,7267
Sesotho	101	1081	1,20857	12,9353
Tshivenda	14	1095	0,16752	13,1028
isiXhosa	61	1156	0,72993	13,8327
Sepedi	35	1191	0,41881	14,2515
siSwati	8	1199	0,09573	14,3473
isiNdebele	11	1210	0,13163	14,4789
Afrikaans	295	1505	3,52997	18,0089
Missing	6852	8357	81,99115	100,0000

Category	Frequency table: Language Group			
	Count	Cumulative Count	Percent	Cumulative Percent
English	703	703	8,41211	8,4121
Afrikaans	295	998	3,52997	11,9421
Indigenous	499	1497	5,97104	17,9131
Missing	6860	8357	82,08687	100,0000

Category	Frequency table: Race			
	Count	Cumulative Count	Percent	Cumulative Percent
Coloured	135	135	1,61541	1,6154
European	631	766	7,55056	9,1660
African	604	1370	7,22747	16,3934
Asian	214	1584	2,56073	18,9542
Indian	6	1590	0,07180	19,0260
Missing	6767	8357	80,97403	100,0000

Variable	Descriptive Statistics: Age					
	Mean	Std.Dev	Minimum	Maximum	N	No.cases Missing
Age	31,06306	8,168250	15,00000	70,00000	8198	159

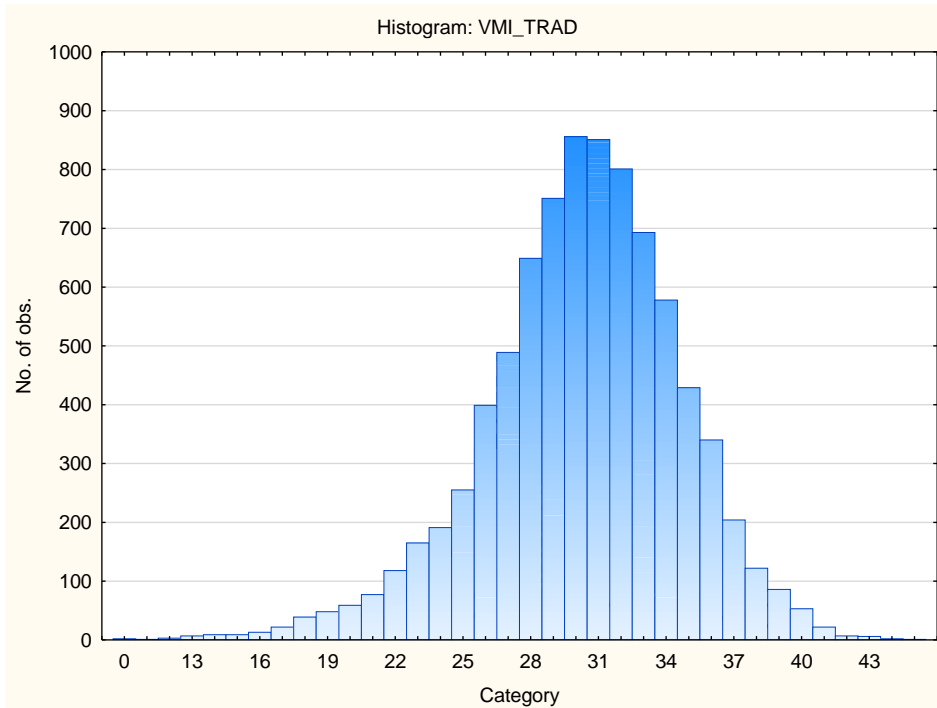


Descriptive statistics on 15FQ+ scales

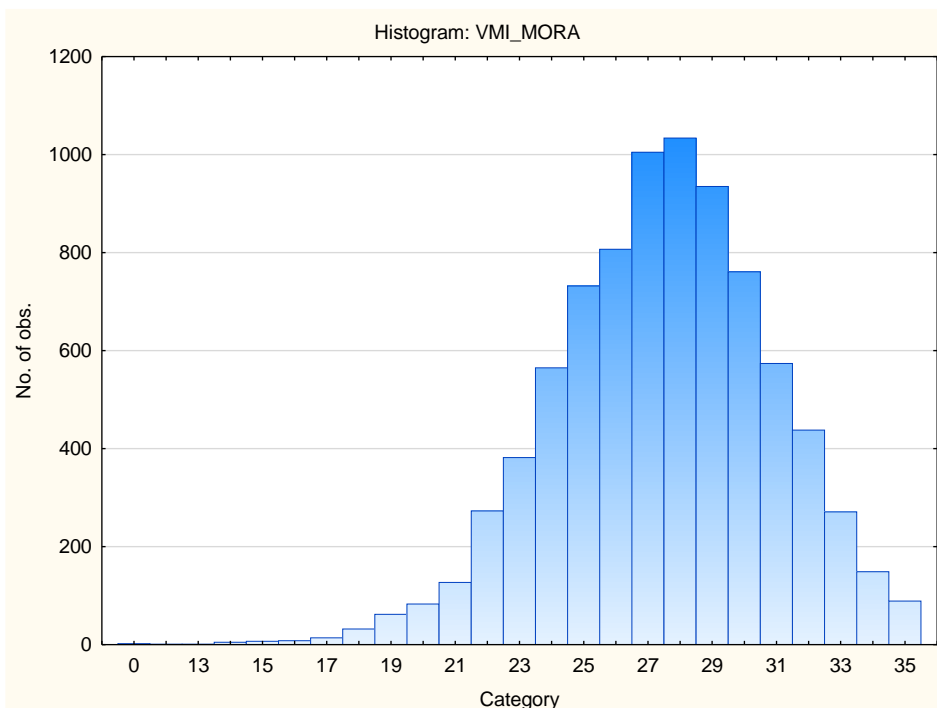
Scale	Scale description	Sample size	Mean	Std.Dev.
TRAD	Traditional	8357	30,2719	4,37132
MORA	Moral	8357	27,4317	3,38965
INDE	Independence	8357	17,4795	3,01964
ETHI	Ethical	8357	22,6408	3,79144
ALTR	Altruism	8357	44,7302	5,47575
AFFI	Affiliation	8357	36,1037	5,28473
AFFE	Affection	8357	34,2149	4,99638
NACH	Achievement	8357	27,6380	3,24679
FINS	Financial	8357	40,1079	6,46044
SAFE	Security	8357	17,4192	4,79030
AEST	Aesthetic	8357	38,4801	6,65499
INFR	Infrequency	8357	0,5238	0,77621
SOCD	Social Desirability	8357	25,4234	5,07500
CENT	Central Tendency	8357	102,4297	26,09958
AQUI	Acquiescence	8357	60,3806	9,92647

Frequency Distributions for VMI Scales

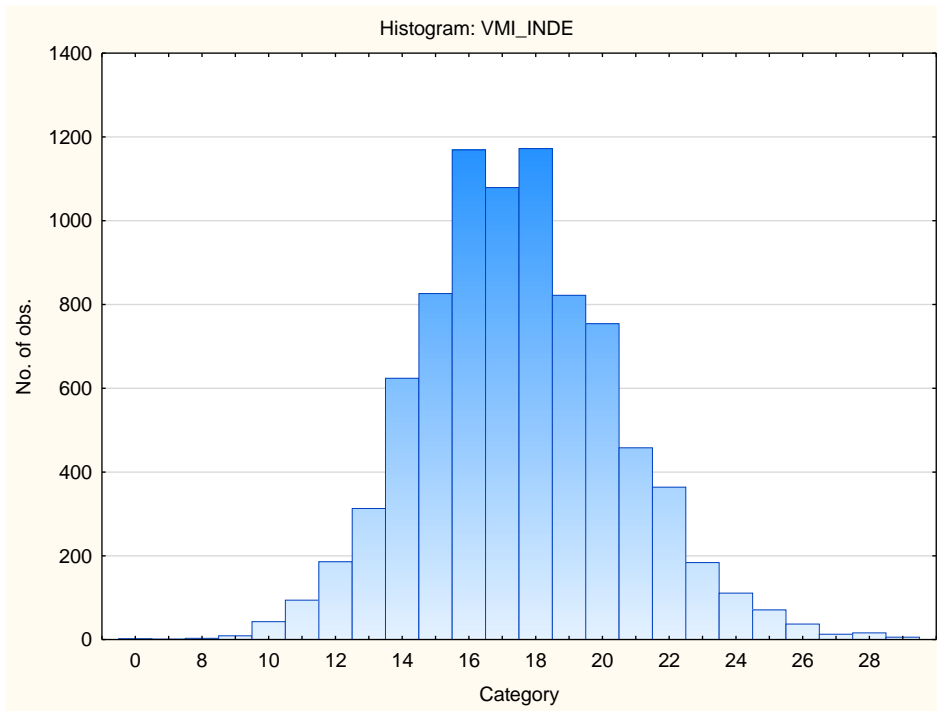
Traditional



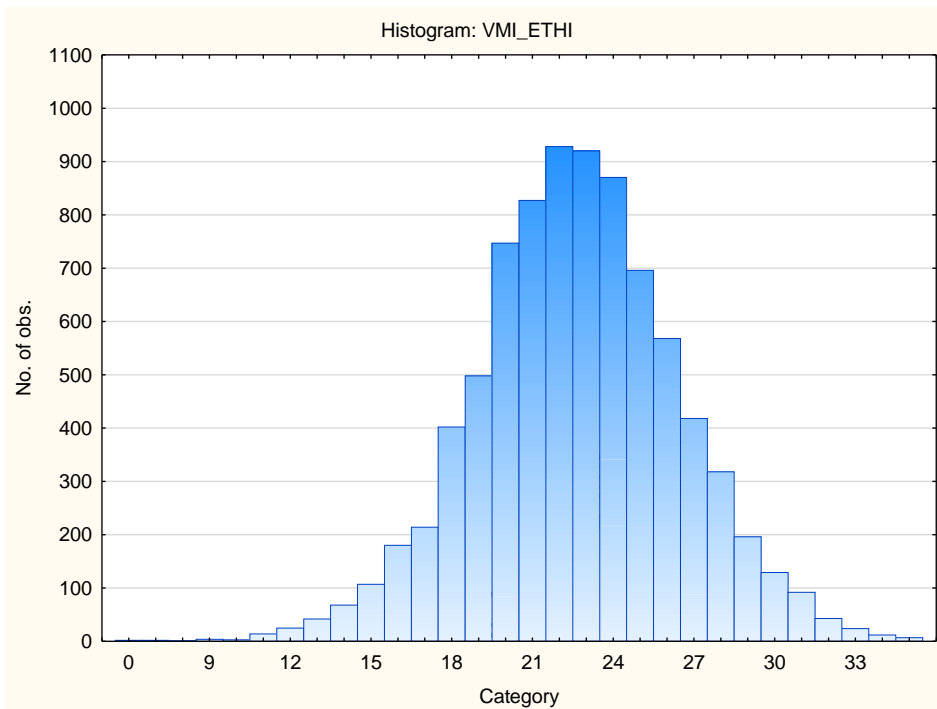
Moral



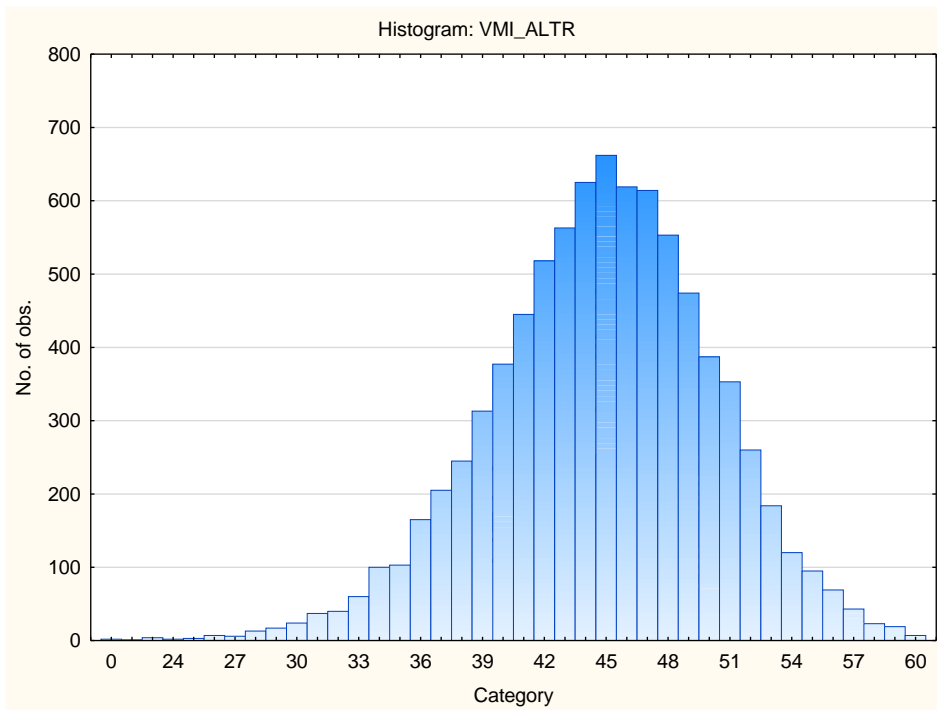
Independence



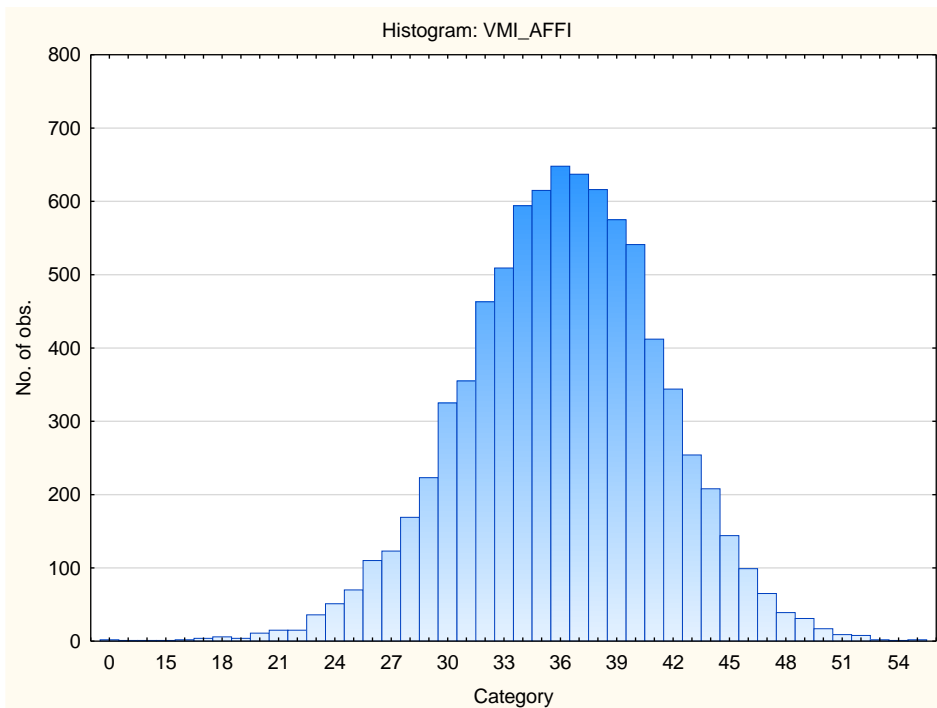
Ethical



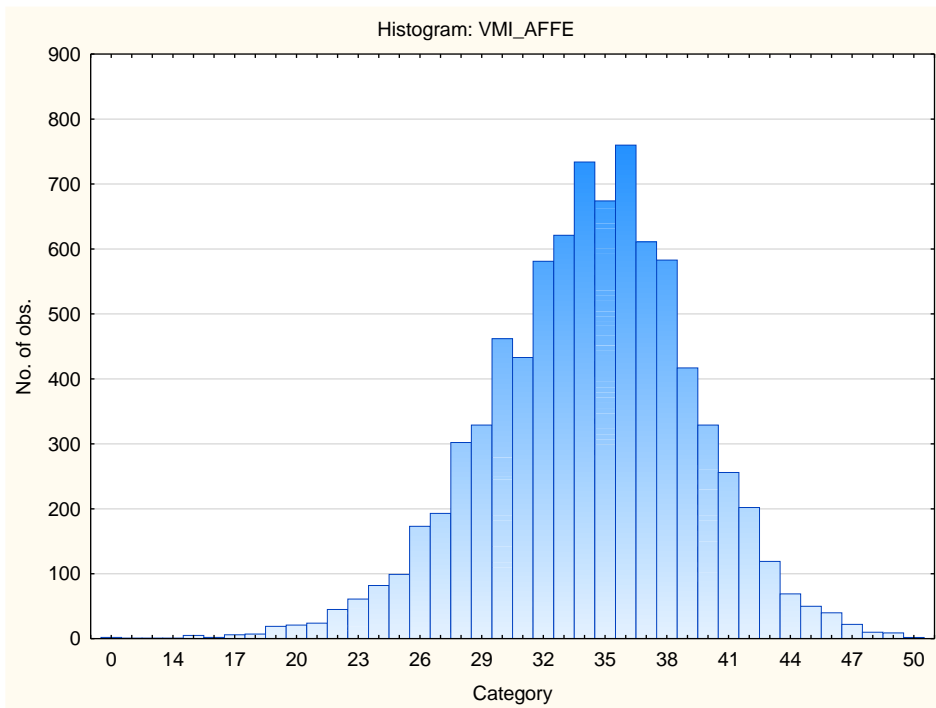
Altruism



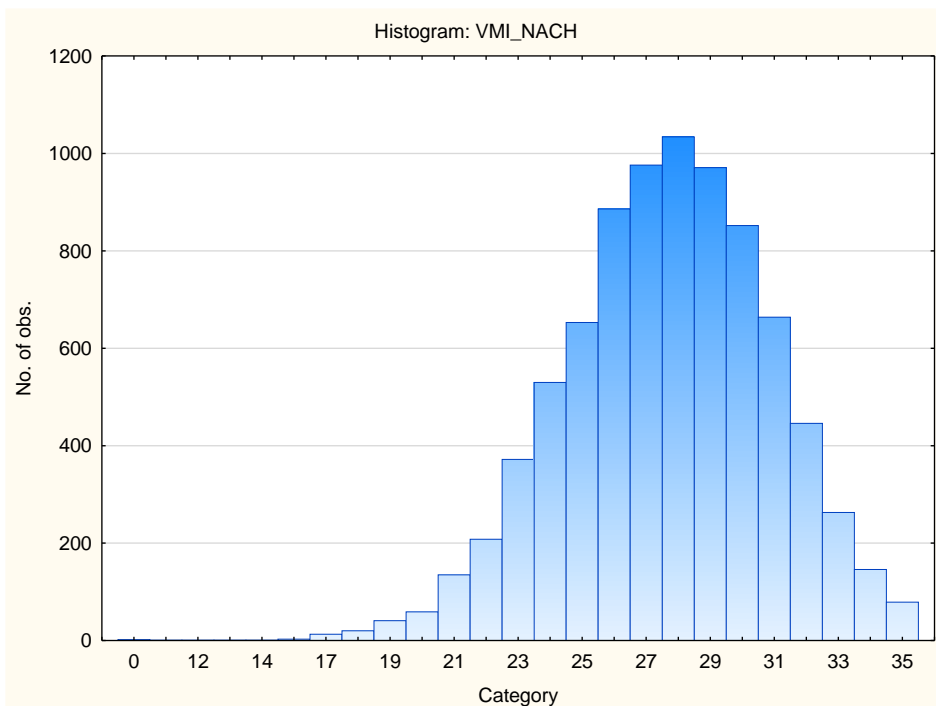
Affiliation



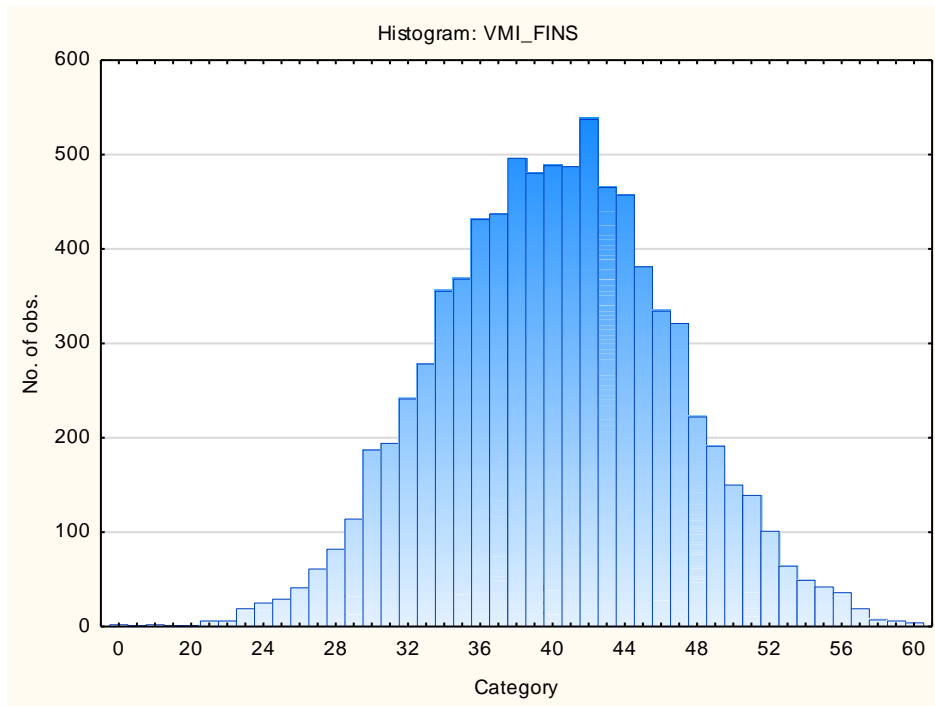
Affection



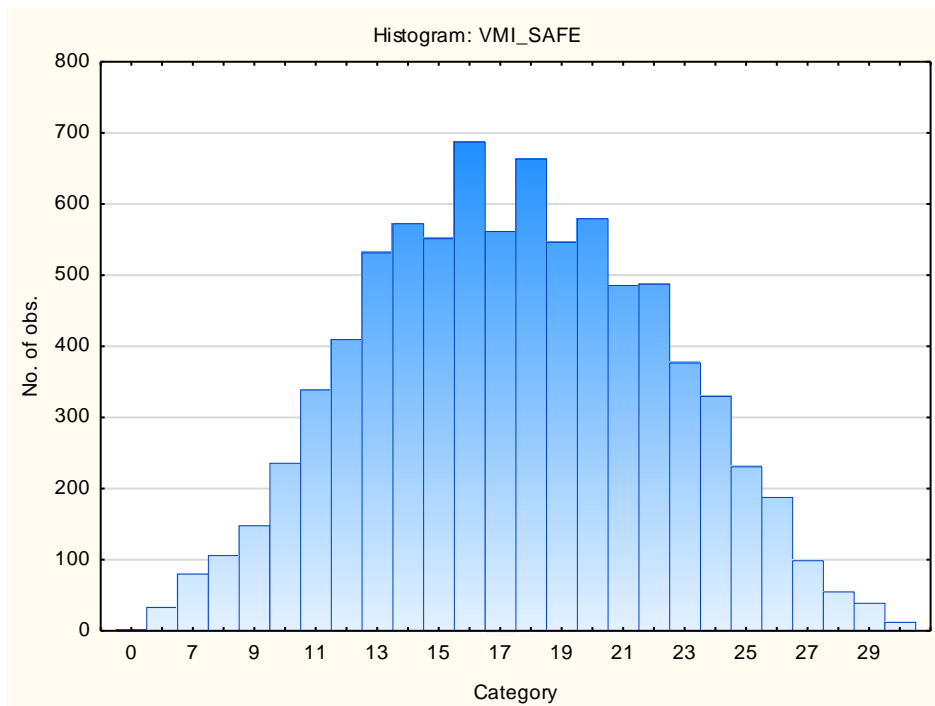
Achievement



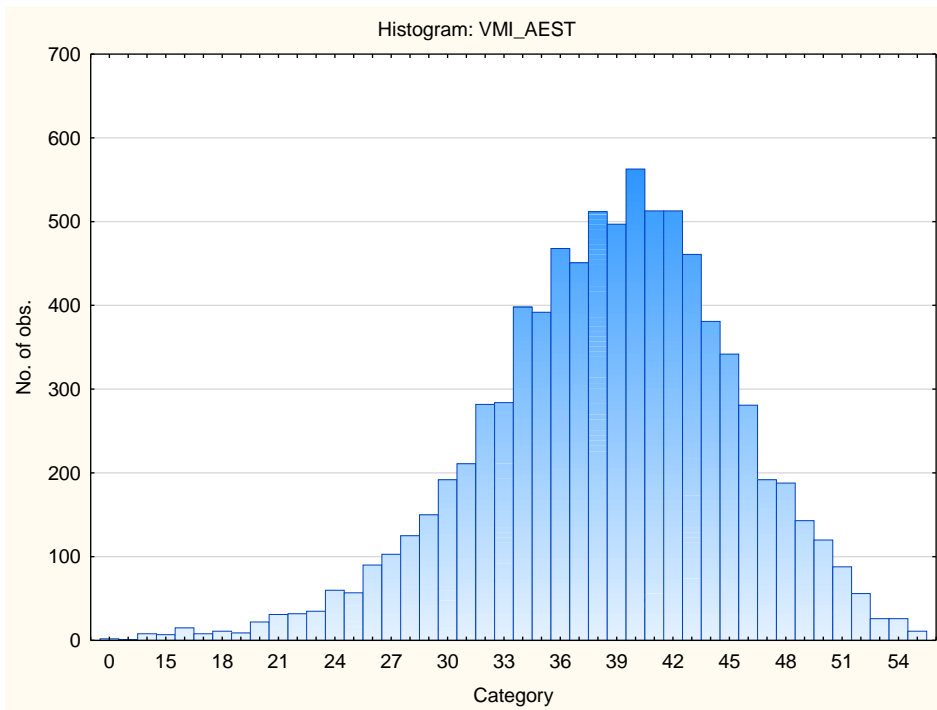
Financial



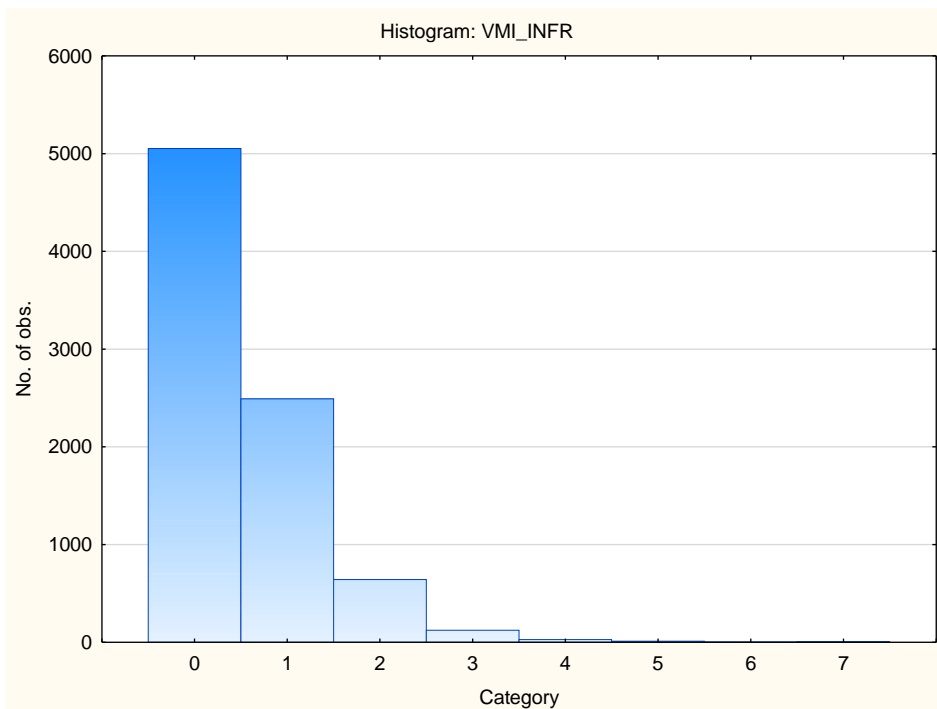
Security



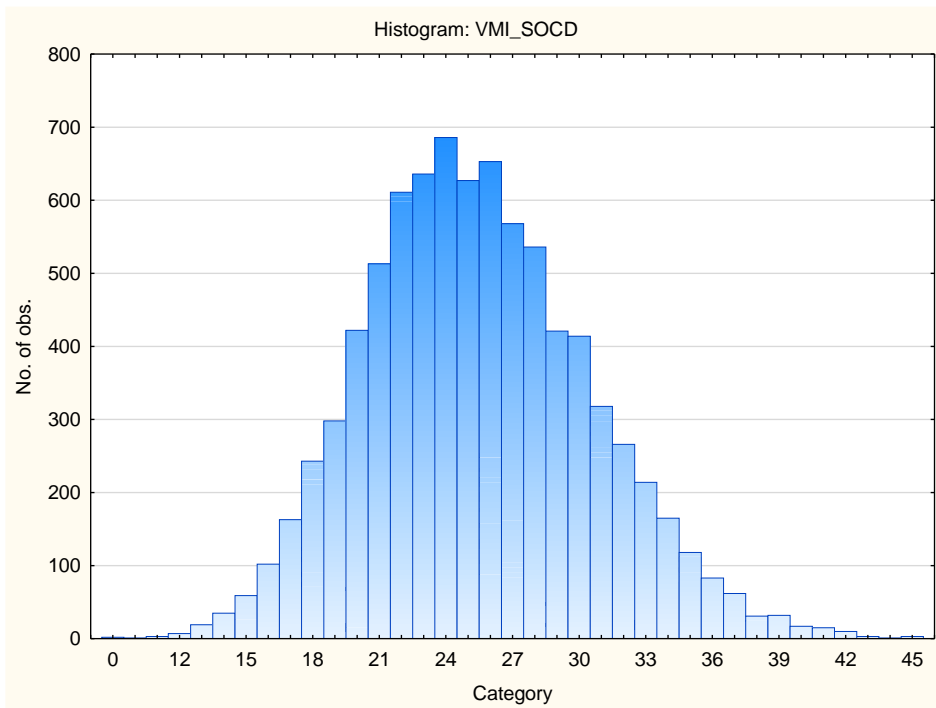
Aesthetic



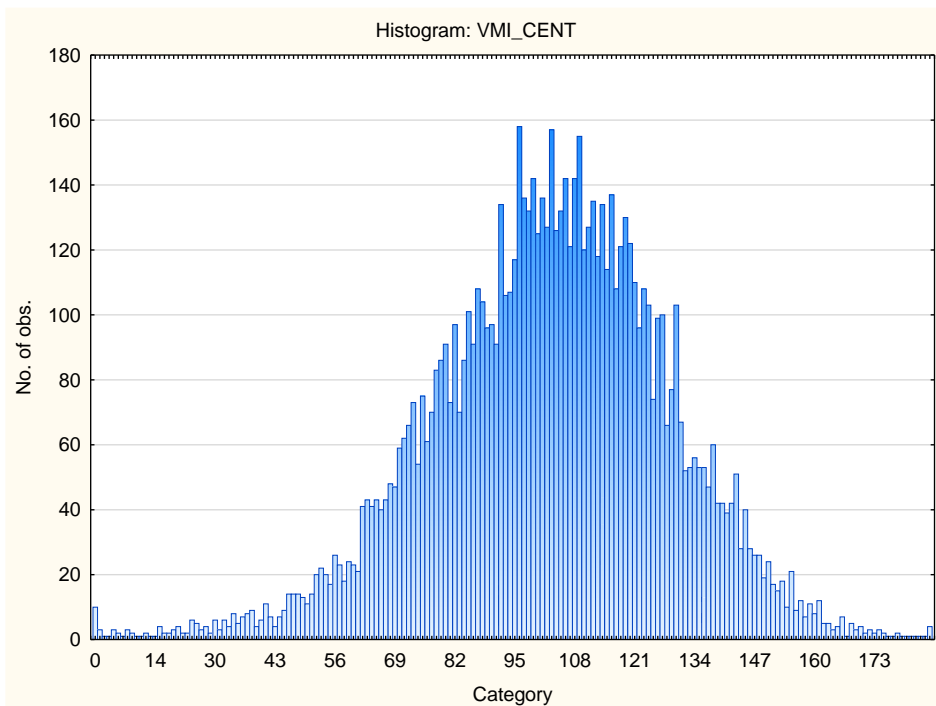
Infrequency



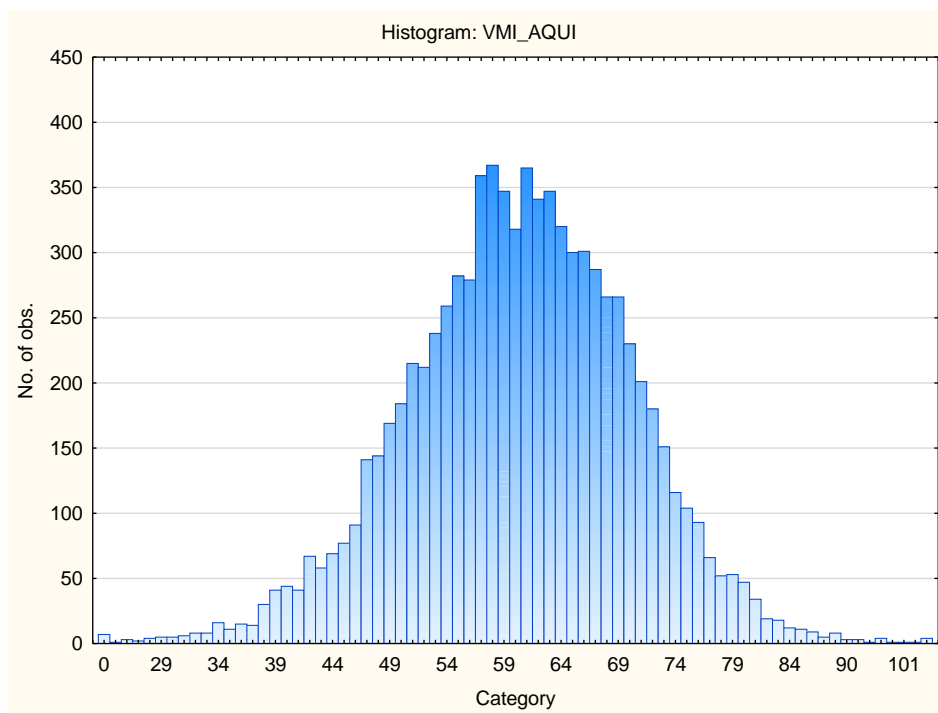
Social Desirability



Central Tendency



Acquiescence



Sten Table

Scale Abbreviation	Scale Name	Raw Scores for Sten Categories									
		1	2	3	4	5	6	7	8	9	10
TRAD	Traditional	0-21	22-23	24-25	26-28	29-30	31-32	33-34	35-36	37-39	40-45
MORA	Moral	0-20	21-22	23-24	25-25	26-27	28-29	30-30	31-32	33-34	35-35
INDE	Independence	0-11	12-12	13-14	15-15	16-17	18-18	19-20	21-22	23-23	24-29
ETHI	Ethical	0-15	16-16	17-18	19-20	21-22	23-24	25-26	27-28	29-30	31-35
ALTR	Altruism	0-33	34-36	37-39	40-41	42-44	45-47	48-50	51-52	53-55	56-60
AFFI	Affiliation	0-25	26-28	29-30	31-33	34-36	37-38	39-41	42-44	45-46	47-55
AFFE	Affection	0-24	25-26	27-29	30-31	32-34	35-36	37-39	40-41	42-44	45-50
NACH	Achievement	0-21	22-22	23-24	25-26	27-27	28-29	30-30	31-32	33-34	35-35
FINS	Financial	0-27	28-30	31-33	34-36	37-40	41-43	44-46	47-49	50-53	54-60
SAFE	Security	0-7	8-10	11-12	13-15	16-17	18-19	20-22	23-24	25-26	27-30
AEST	Aesthetic	0-25	26-28	29-31	32-35	36-38	39-41	42-45	46-48	49-51	52-55
INFR	Infrequency	0--1	0-0	1-1	2-2	3-3	4-4	5-5	6-6	7-7	
SOCD	Social Desirability	0-15	16-17	18-20	21-22	23-25	26-27	28-30	31-33	34-35	36-45
CENT	Central Tendency	0-50	51-63	64-76	77-89	90-102	103-115	116-128	129-141	142-154	155-244
AQUI	Acquiescence	0-40	41-45	46-50	51-55	56-60	61-65	66-70	71-75	76-80	81-122