

Values and Motives Inventory (VMI)

Norm Group: SA English Speakers, Updated 2016

Norm Type:

Standard deviation norm

Sample Composition

Compiled from raw data on 703 respondents submitted by various clients as well as collected by Psytech SA and collaborators, via GeneSys for Windows, in the period up to November 2013.

Biographical Composition

Category	Frequency table: Sex			
	Count	Cumulative Count	Percent	Cumulative Percent
M	361	361	51,35135	51,3514
F	340	701	48,36415	99,7155
U	2	703	0,28450	100,0000
Missing	0	703	0,00000	100,0000

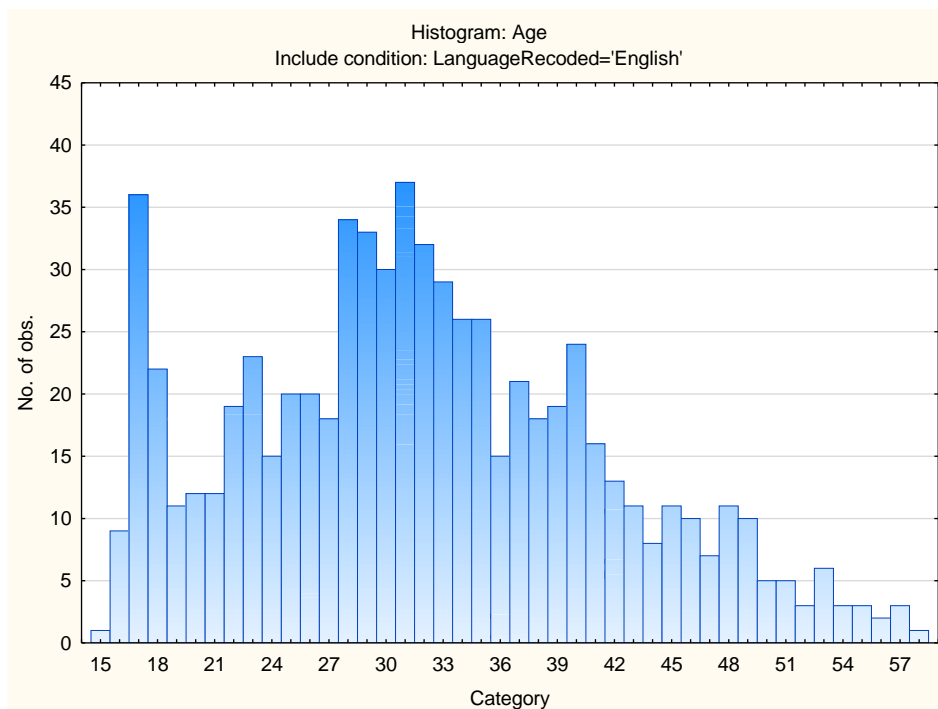
Category	Frequency table: Education			
	Count	Cumulative Count	Percent	Cumulative Percent
Grade 12	262	262	37,26885	37,2688
Tertiary	98	360	13,94026	51,2091
Tertiary Certificate/Trade	135	495	19,20341	70,4125
Post Graduate	134	629	19,06117	89,4737
< Matric	35	664	4,97866	94,4523
Missing	39	703	5,54765	100,0000

Category	Frequency table: Language			
	Count	Cumulative Count	Percent	Cumulative Percent
English	703	703	100,0000	100,0000
Missing	0	703	0,0000	100,0000

Category	Frequency table: Language Group			
	Count	Cumulative Count	Percent	Cumulative Percent
English	703	703	100,0000	100,0000
Missing	0	703	0,0000	100,0000

Category	Frequency table: Race			
	Count	Cumulative Count	Percent	Cumulative Percent
Coloured	96	96	13,65576	13,6558
European	355	451	50,49787	64,1536
African	42	493	5,97440	70,1280
Asian	181	674	25,74680	95,8748
Indian	6	680	0,85349	96,7283
Missing	23	703	3,27169	100,0000

Variable	Descriptive Statistics: Age					
	Mean	Std.Dev	Minimum	Maximum	N	No.cases Missing
Age	32,01884	9,525670	15,00000	61,00000	690	13

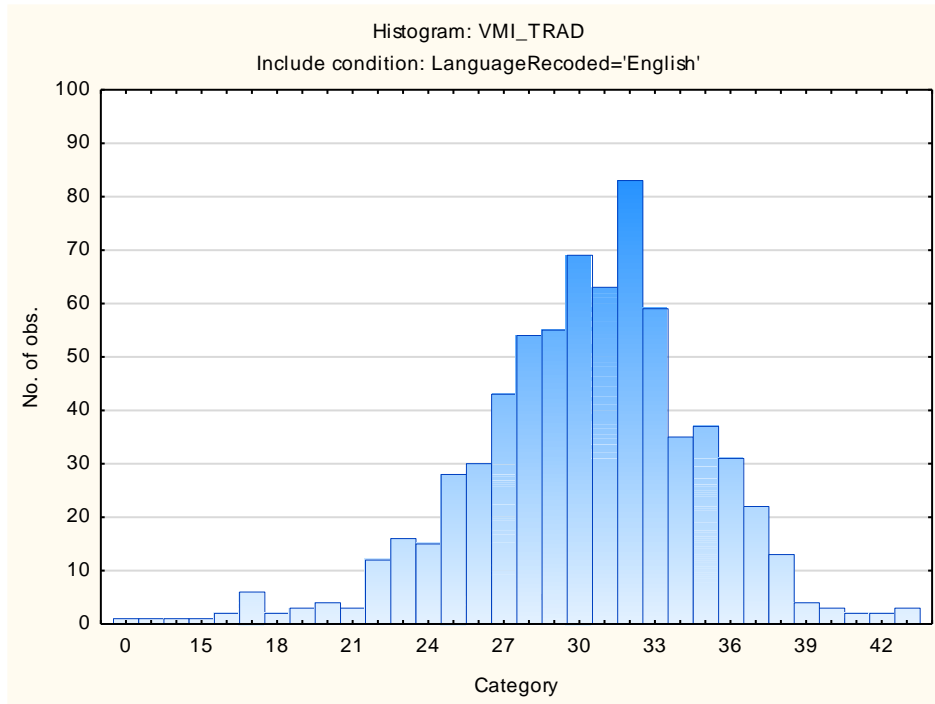


Descriptive statistics on 15FQ+ scales

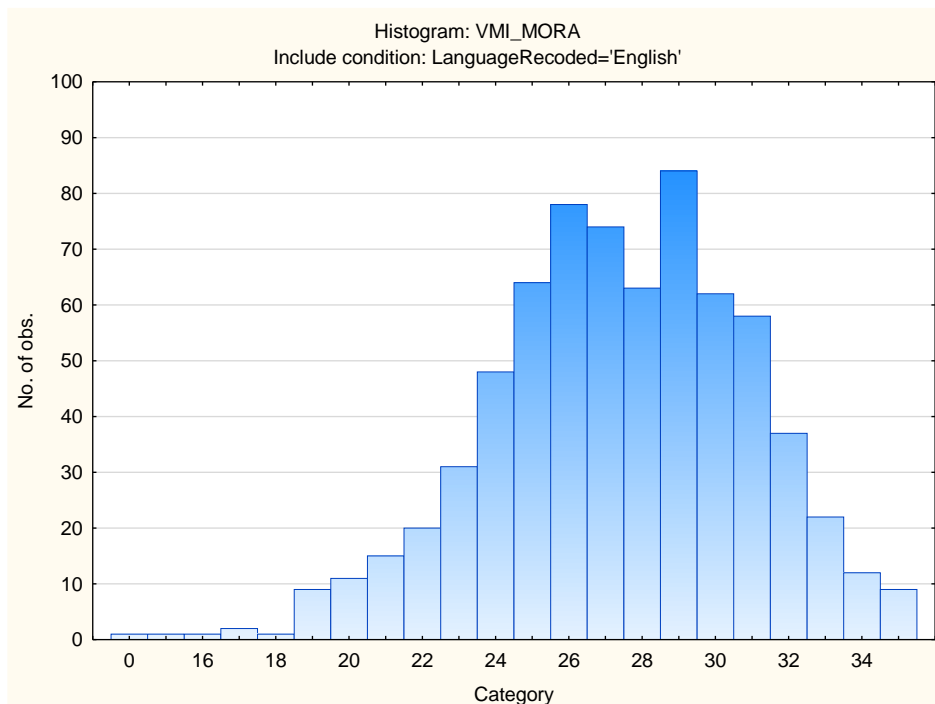
Scale	Scale description	Sample size	Mean	Std.Dev.
TRAD	Traditional	703	30,23329	4,70069
MORA	Moral	703	27,32717	3,65592
INDE	Independence	703	17,26885	3,27778
ETHI	Ethical	703	22,81081	4,00638
ALTR	Altruism	703	45,38122	5,61893
AFFI	Affiliation	703	36,16643	5,58303
AFFE	Affection	703	34,21764	5,42860
NACH	Achievement	703	27,93030	3,64398
FINS	Financial	703	40,99573	6,66934
SAFE	Security	703	17,02560	4,99908
AEST	Aesthetic	703	37,76387	7,35339
INFR	Infrequency	703	0,58890	0,82188
SOCD	Social Desirability	703	25,18350	5,23348
CENT	Central Tendency	703	97,89900	27,76729
AQUI	Acquiescence	703	61,38976	9,77243

Frequency Distributions for VMI Scales

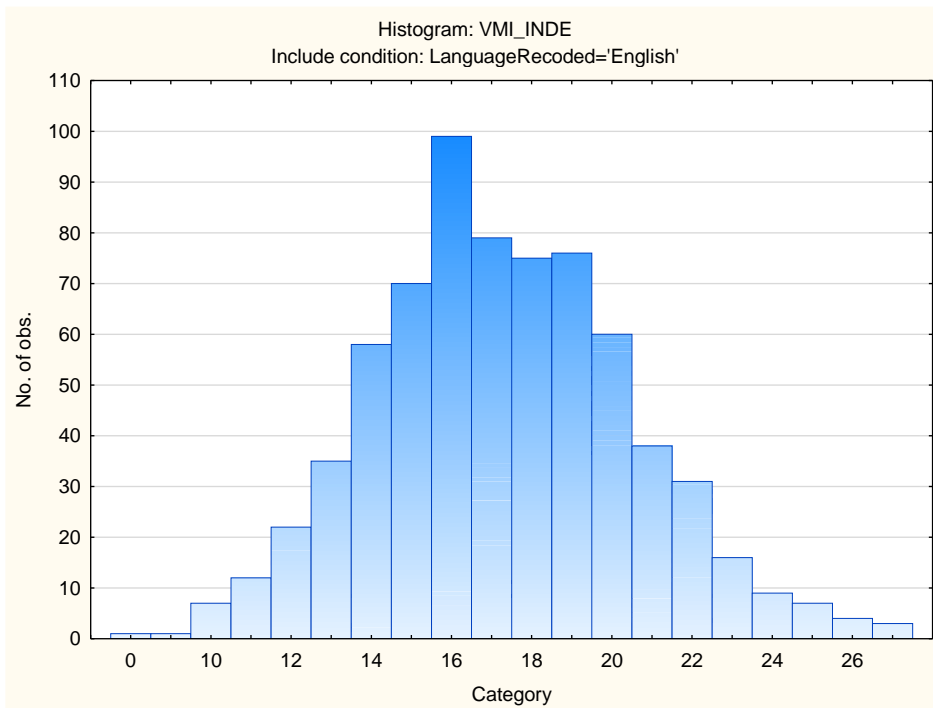
Traditional



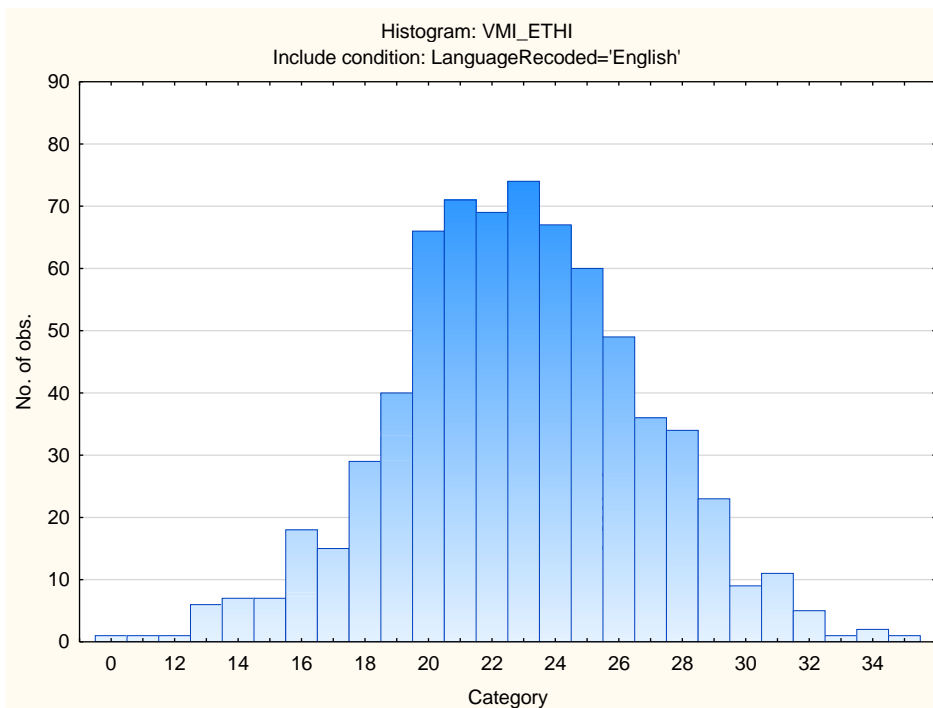
Moral



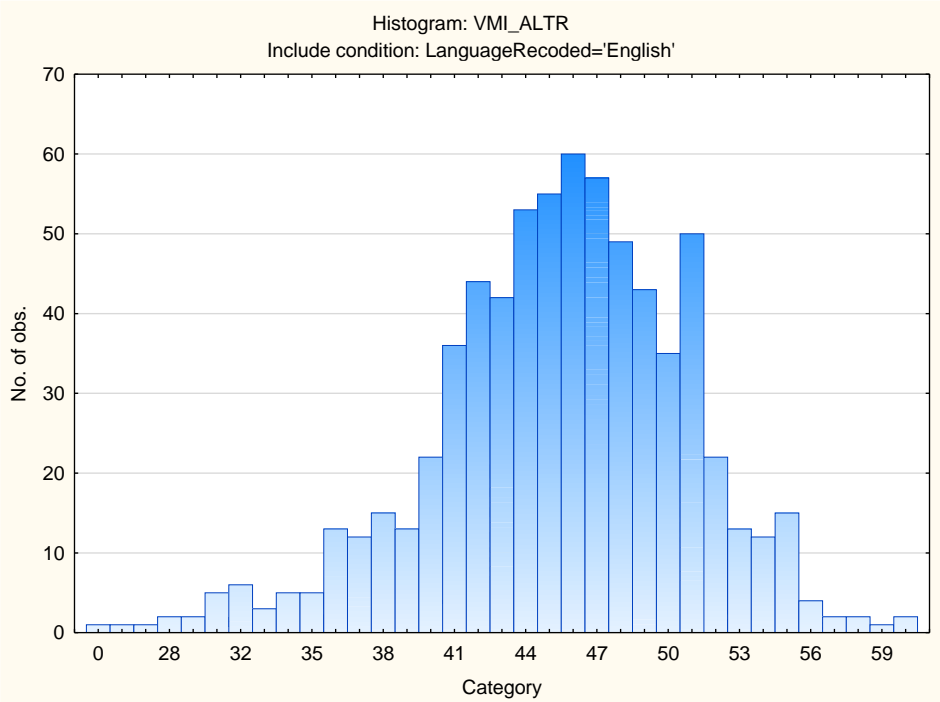
Independence



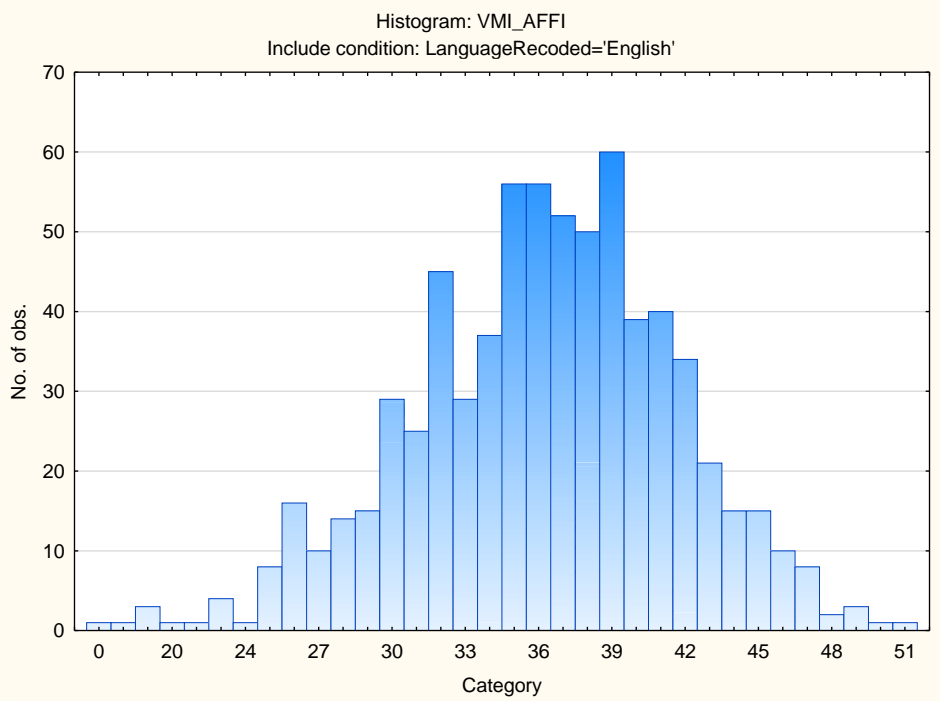
Ethical



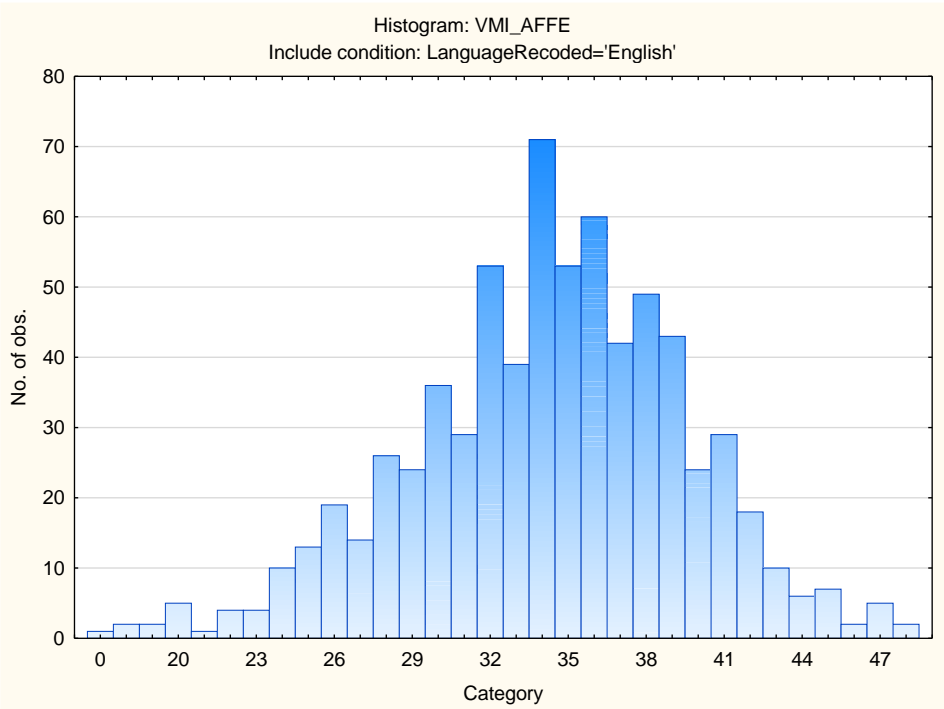
Altruism



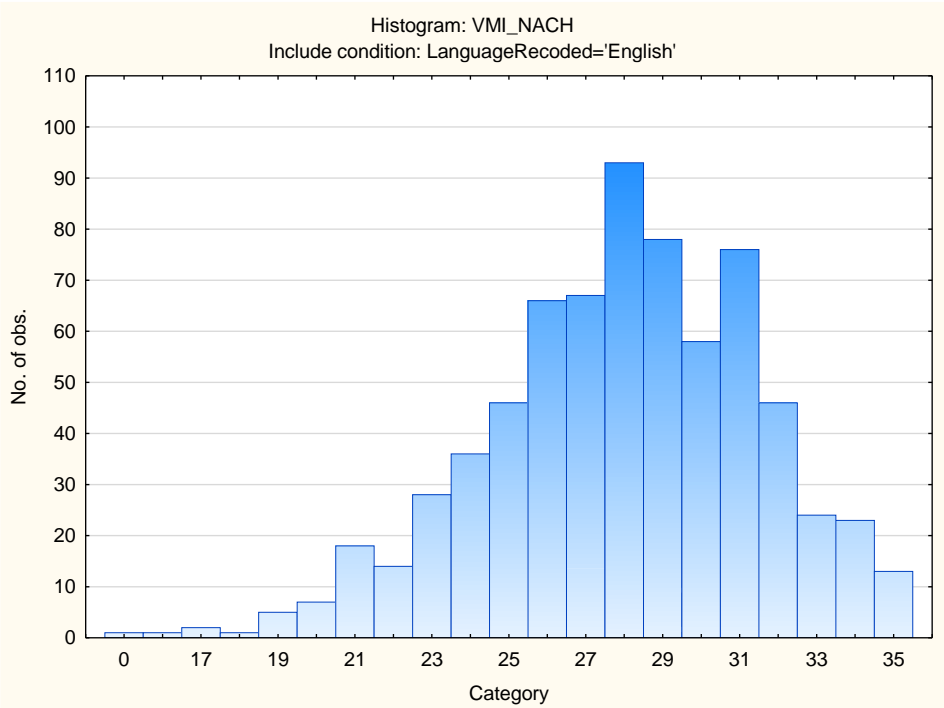
Affiliation



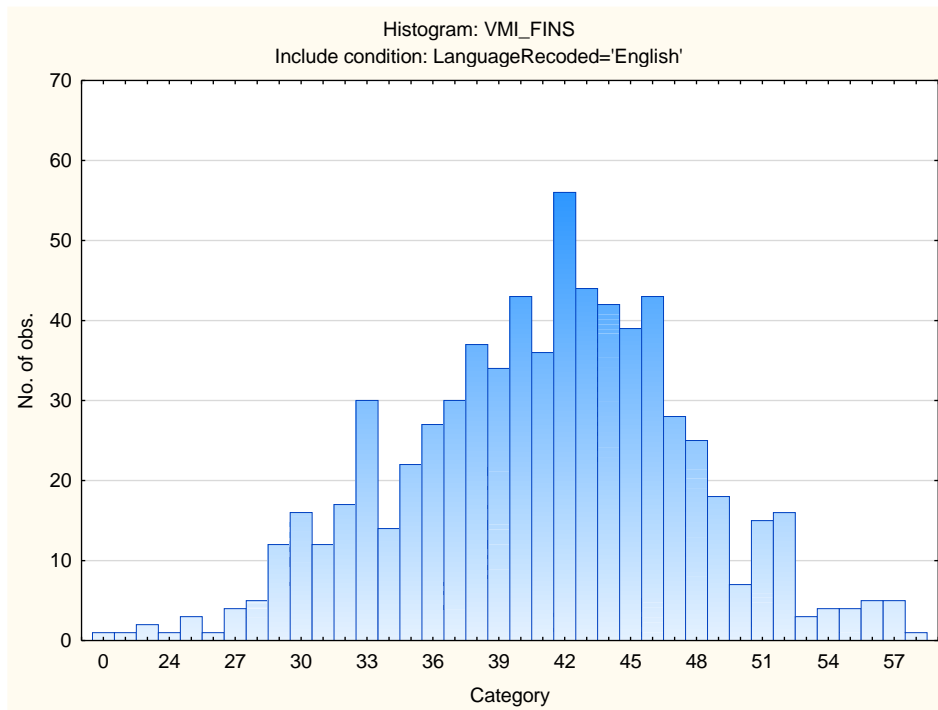
Affection



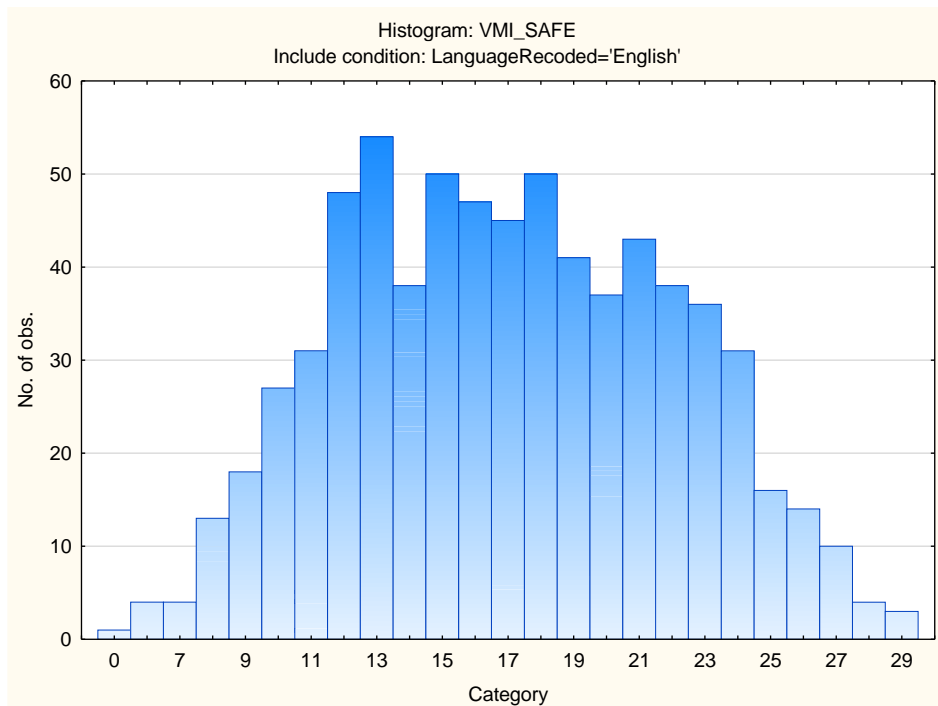
Achievement



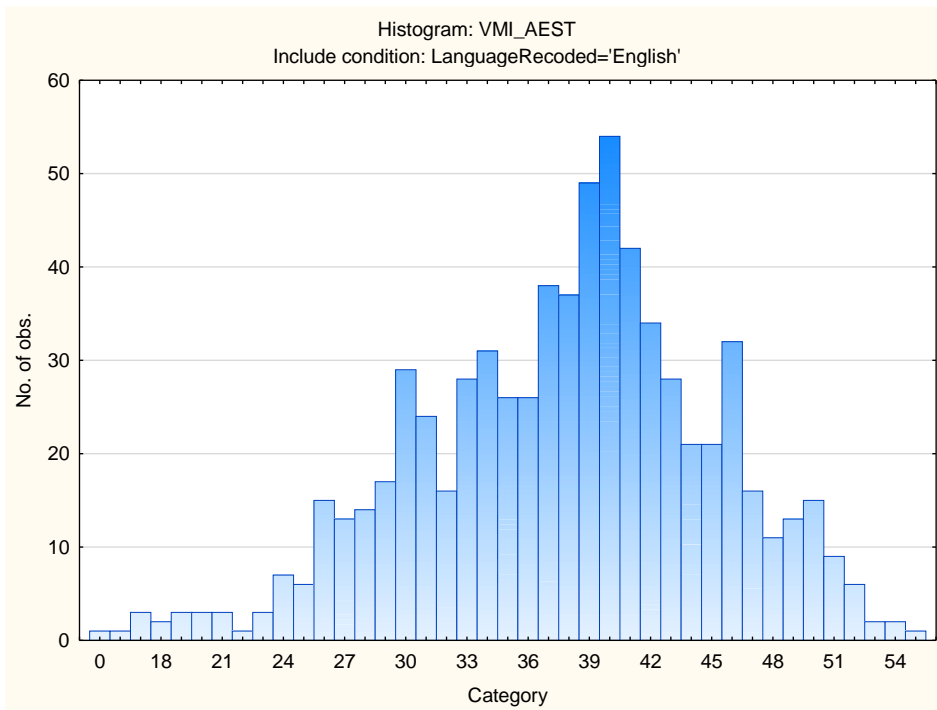
Financial



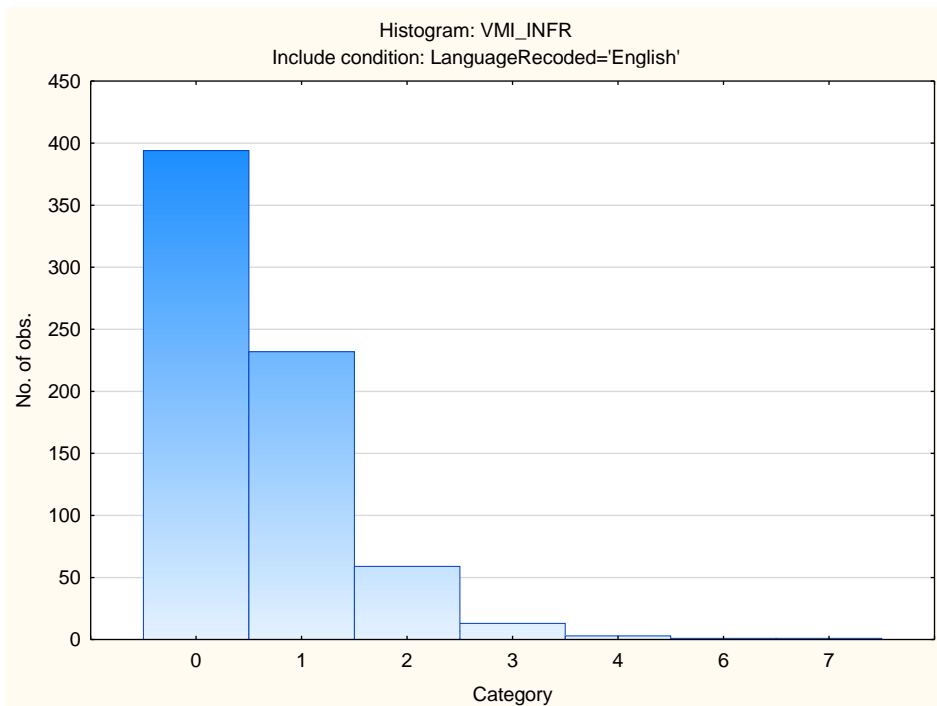
Security



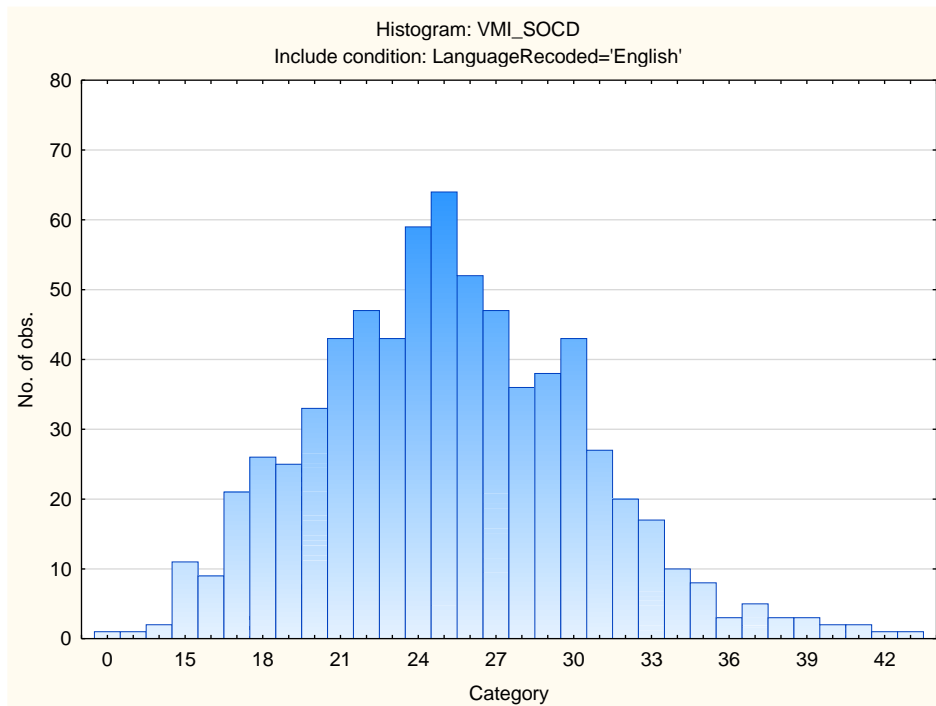
Aesthetic



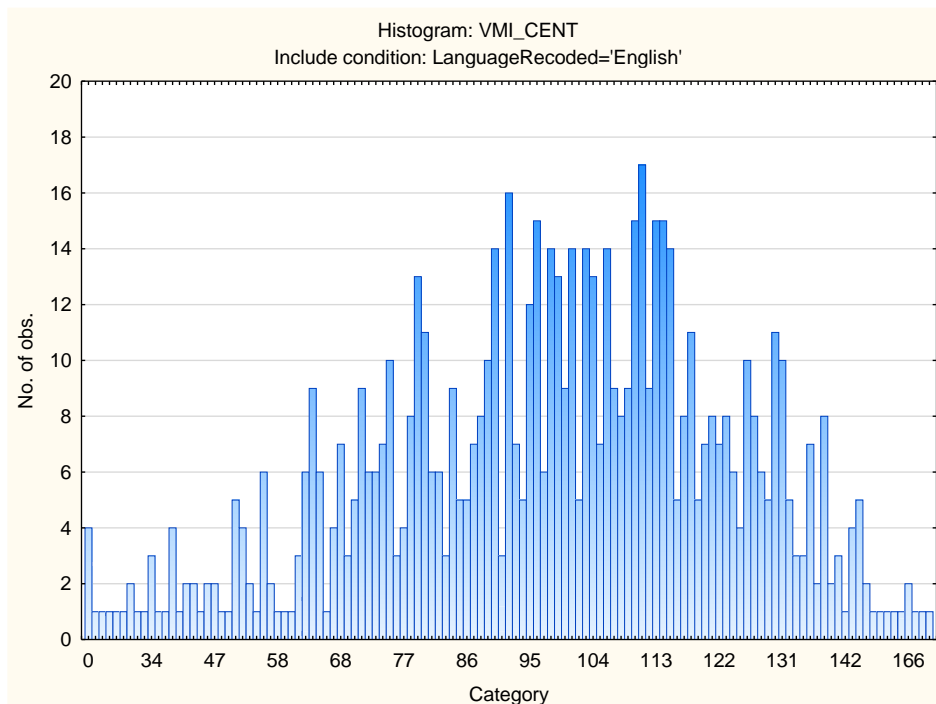
Infrequency



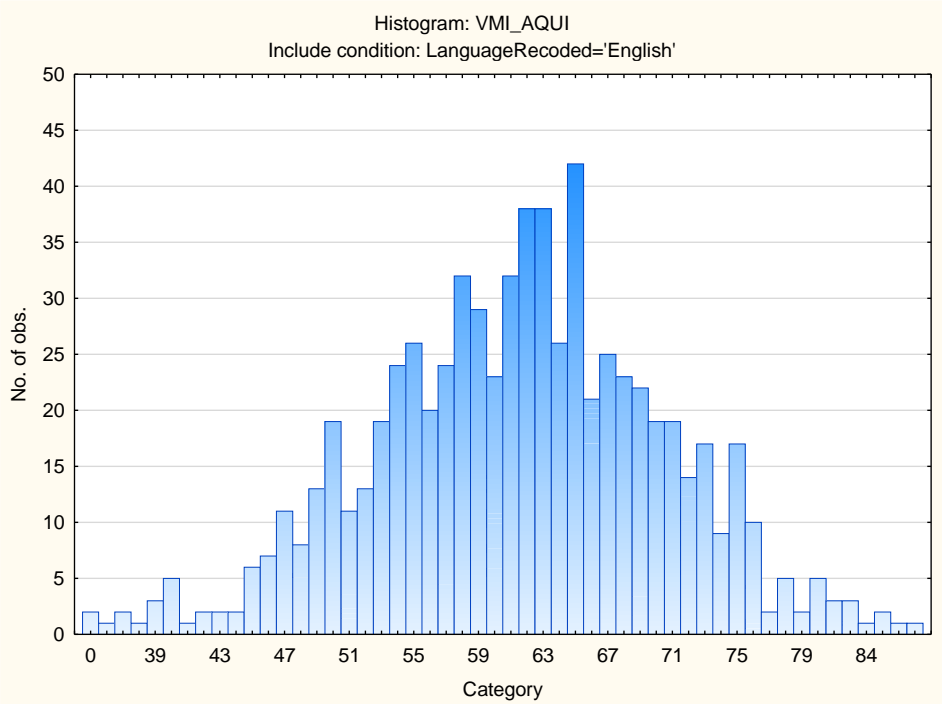
Social Desirability



Central Tendency



Acquiescence



Sten Table

Scale Abbreviation	Scale Name	Raw Scores for Sten Categories									
		1	2	3	4	5	6	7	8	9	10
TRAD	Traditional	0-20	21-23	24-25	26-27	28-30	31-32	33-34	35-37	38-39	40-43
MORA	Moral	0-20	21-21	22-23	24-25	26-27	28-29	30-30	31-32	33-34	35-35
INDE	Independence	0-10	11-12	13-13	14-15	16-17	18-18	19-20	21-22	23-23	24-28
ETHI	Ethical	0-14	15-16	17-18	19-20	21-22	23-24	25-26	27-28	29-30	31-35
ALTR	Altruism	0-34	35-36	37-39	40-42	43-45	46-48	49-51	52-53	54-56	57-60
AFFI	Affiliation	0-25	26-27	28-30	31-33	34-36	37-38	39-41	42-44	45-47	48-51
AFFE	Affection	0-23	24-26	27-28	29-31	32-34	35-36	37-39	40-42	43-45	46-48
NACH	Achievement	0-20	21-22	23-24	25-26	27-27	28-29	30-31	32-33	34-35	
FINS	Financial	0-27	28-30	31-34	35-37	38-40	41-44	45-47	48-50	51-54	55-59
SAFE	Security	0-7	8-9	10-12	13-14	15-17	18-19	20-22	23-24	25-27	28-29
AEST	Aesthetic	0-23	24-26	27-30	31-34	35-37	38-41	42-45	46-48	49-52	53-55
INFR	Infrequency	0--1	0-0	1-1	2-2	3-3	4-4	5-5	6-6	7-7	
SOCD	Social Desirability	0-14	15-17	18-19	20-22	23-25	26-27	28-30	31-33	34-35	36-45
CENT	Central Tendency	0-42	43-56	57-70	71-84	85-97	98-111	112-125	126-139	140-153	154-244
AQUI	Acquiescence	0-41	42-46	47-51	52-56	57-61	62-66	67-71	72-76	77-80	81-122