

# Graduate Reasoning Test Battery Norm Group: South African Afrikaans speakers, updated 2010

---

## Composition of the sample

The sample consisted of South Africans who declared their home language to be Afrikaans, tested by Psytech South Africa and collaborators in the period leading up to January 2010. Not all respondents completed the entire Graduate Reasoning Test battery. Biographical information is reported separately for the different subtests.

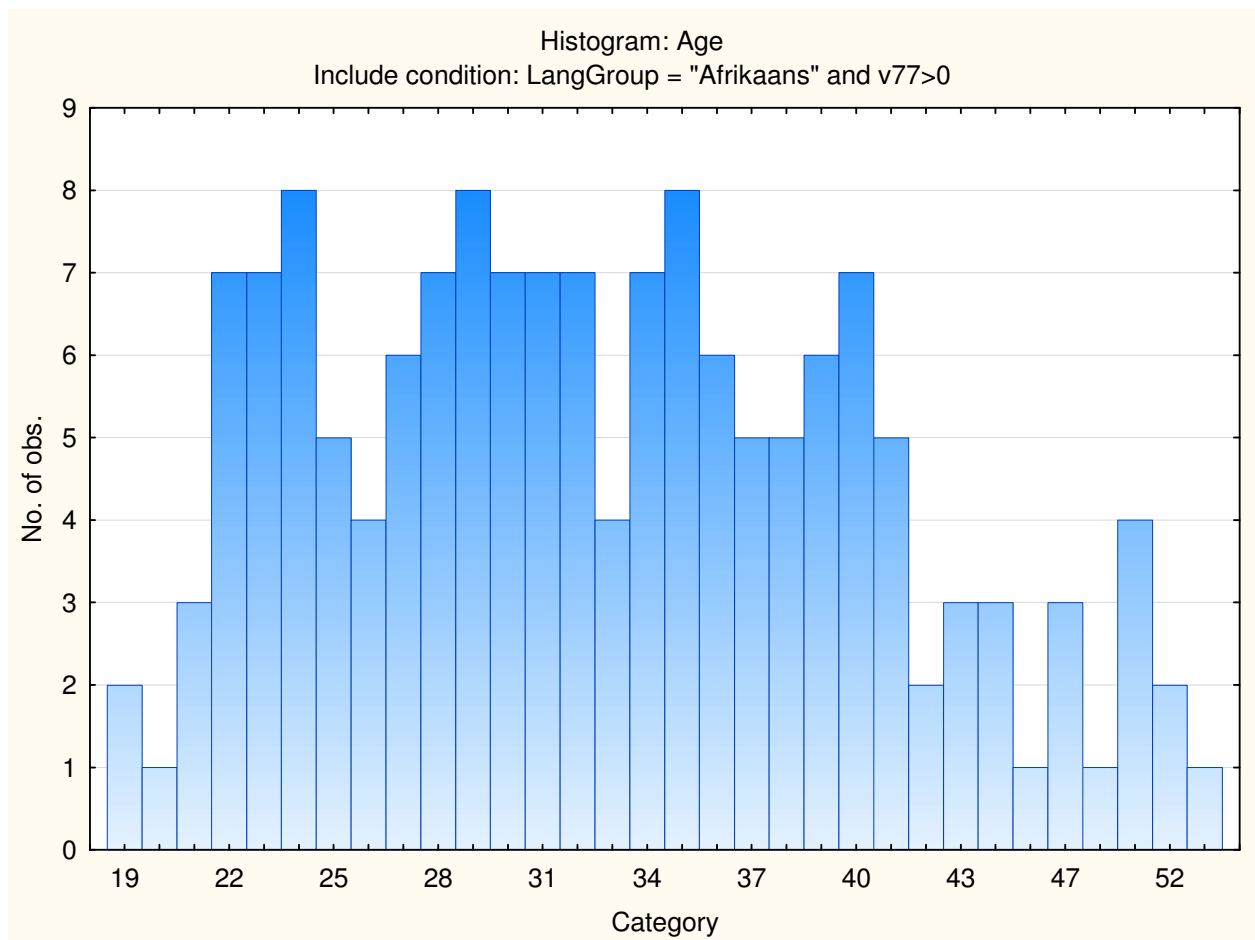
## Sample composition: Graduate Verbal Reasoning Test

| Category | Frequency table: Sex |                  |          |                    |
|----------|----------------------|------------------|----------|--------------------|
|          | Count                | Cumulative Count | Percent  | Cumulative Percent |
| F        | 52                   | 52               | 33.33333 | 33.3333            |
| M        | 103                  | 155              | 66.02564 | 99.3590            |
| U        | 1                    | 156              | 0.64103  | 100.0000           |
| Missing  | 0                    | 156              | 0.00000  | 100.0000           |

| Category      | Frequency table: Education Group |                  |          |                    |
|---------------|----------------------------------|------------------|----------|--------------------|
|               | Count                            | Cumulative Count | Percent  | Cumulative Percent |
| Degree        | 24                               | 24               | 15.38462 | 15.3846            |
| Grade 12      | 51                               | 75               | 32.69231 | 48.0769            |
| Diploma       | 18                               | 93               | 11.53846 | 59.6154            |
| <Grade 12     | 8                                | 101              | 5.12821  | 64.7436            |
| Post Graduate | 28                               | 129              | 17.94872 | 82.6923            |
| Certificate   | 3                                | 132              | 1.92308  | 84.6154            |
| Missing       | 24                               | 156              | 15.38462 | 100.0000           |

| Category | Frequency table: Race Group |                  |          |                    |
|----------|-----------------------------|------------------|----------|--------------------|
|          | Count                       | Cumulative Count | Percent  | Cumulative Percent |
| Coloured | 80                          | 80               | 51.28205 | 51.2821            |
| European | 61                          | 141              | 39.10256 | 90.3846            |
| Asian    | 1                           | 142              | 0.64103  | 91.0256            |
| African  | 5                           | 147              | 3.20513  | 94.2308            |
| Missing  | 9                           | 156              | 5.76923  | 100.0000           |

| Variable | Descriptive Statistics |          |          |          |     | No.cases Missing |
|----------|------------------------|----------|----------|----------|-----|------------------|
|          | Mean                   | Std.Dev  | Minimum  | Maximum  | N   |                  |
| Age      | 32.87500               | 8.025054 | 19.00000 | 59.00000 | 152 | 4                |



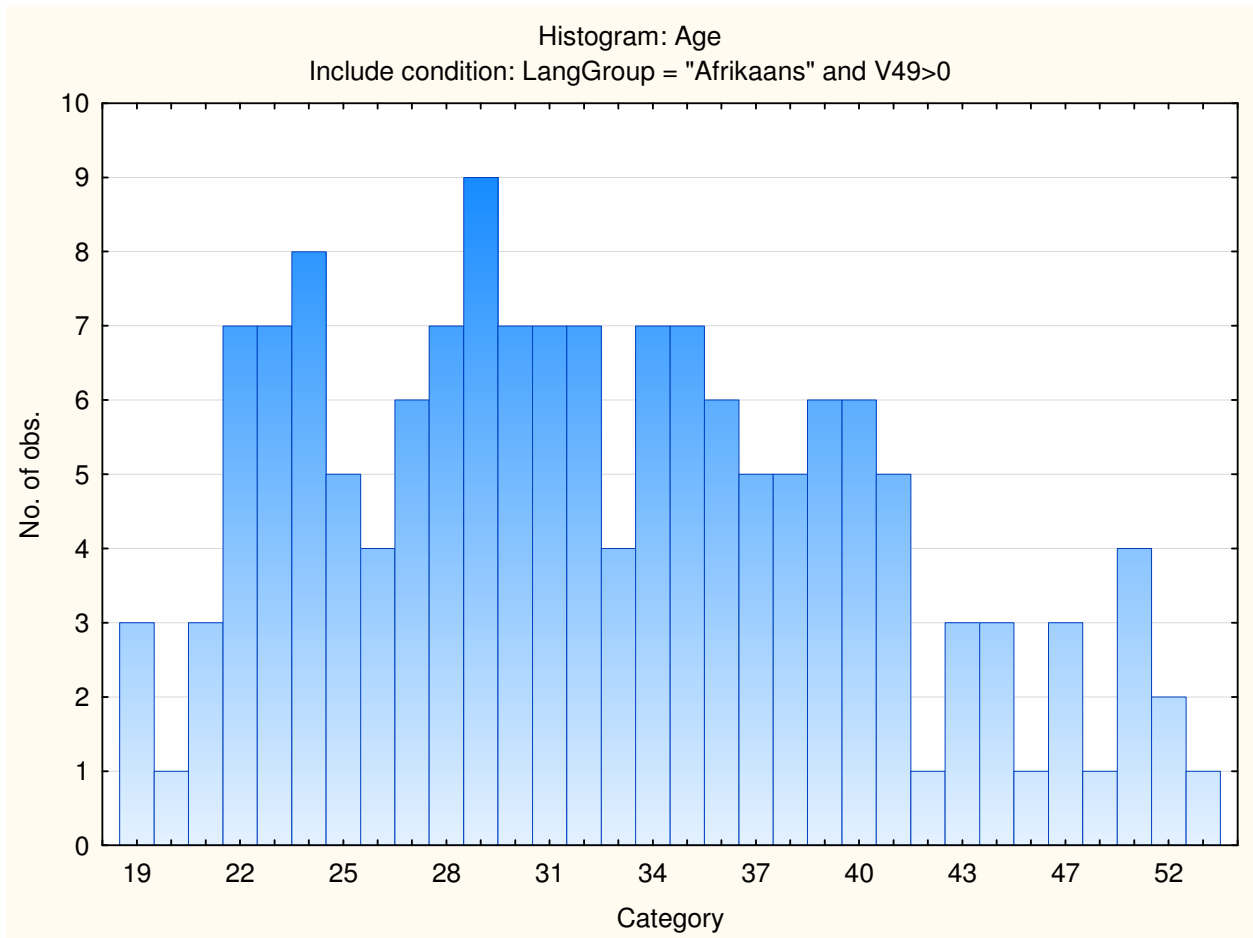
### Sample composition: Graduate Numerical Reasoning

| Category | Frequency table: Sex |                  |          |                    |
|----------|----------------------|------------------|----------|--------------------|
|          | Count                | Cumulative Count | Percent  | Cumulative Percent |
| F        | 51                   | 51               | 32.90323 | 32.9032            |
| M        | 103                  | 154              | 66.45161 | 99.3548            |
| U        | 1                    | 155              | 0.64516  | 100.0000           |
| Missing  | 0                    | 155              | 0.00000  | 100.0000           |

| Category      | Frequency table: Education Group |                  |          |                    |
|---------------|----------------------------------|------------------|----------|--------------------|
|               | Count                            | Cumulative Count | Percent  | Cumulative Percent |
| Degree        | 21                               | 21               | 13.54839 | 13.5484            |
| Grade 12      | 52                               | 73               | 33.54839 | 47.0968            |
| Diploma       | 17                               | 90               | 10.96774 | 58.0645            |
| <Grade 12     | 8                                | 98               | 5.16129  | 63.2258            |
| Post Graduate | 28                               | 126              | 18.06452 | 81.2903            |
| Certificate   | 3                                | 129              | 1.93548  | 83.2258            |
| Missing       | 26                               | 155              | 16.77419 | 100.0000           |

| Category | Frequency table: Race Group |                  |          |                    |
|----------|-----------------------------|------------------|----------|--------------------|
|          | Count                       | Cumulative Count | Percent  | Cumulative Percent |
| Coloured | 79                          | 79               | 50.96774 | 50.9677            |
| European | 61                          | 140              | 39.35484 | 90.3226            |
| Asian    | 1                           | 141              | 0.64516  | 90.9677            |
| African  | 5                           | 146              | 3.22581  | 94.1935            |
| Missing  | 9                           | 155              | 5.80645  | 100.0000           |

| Variable | Descriptive Statistics: Age |          |          |          |     |                  |
|----------|-----------------------------|----------|----------|----------|-----|------------------|
|          | Mean                        | Std.Dev  | Minimum  | Maximum  | N   | No.cases Missing |
| Age      | 32.63576                    | 8.076702 | 19.00000 | 59.00000 | 151 | 4                |



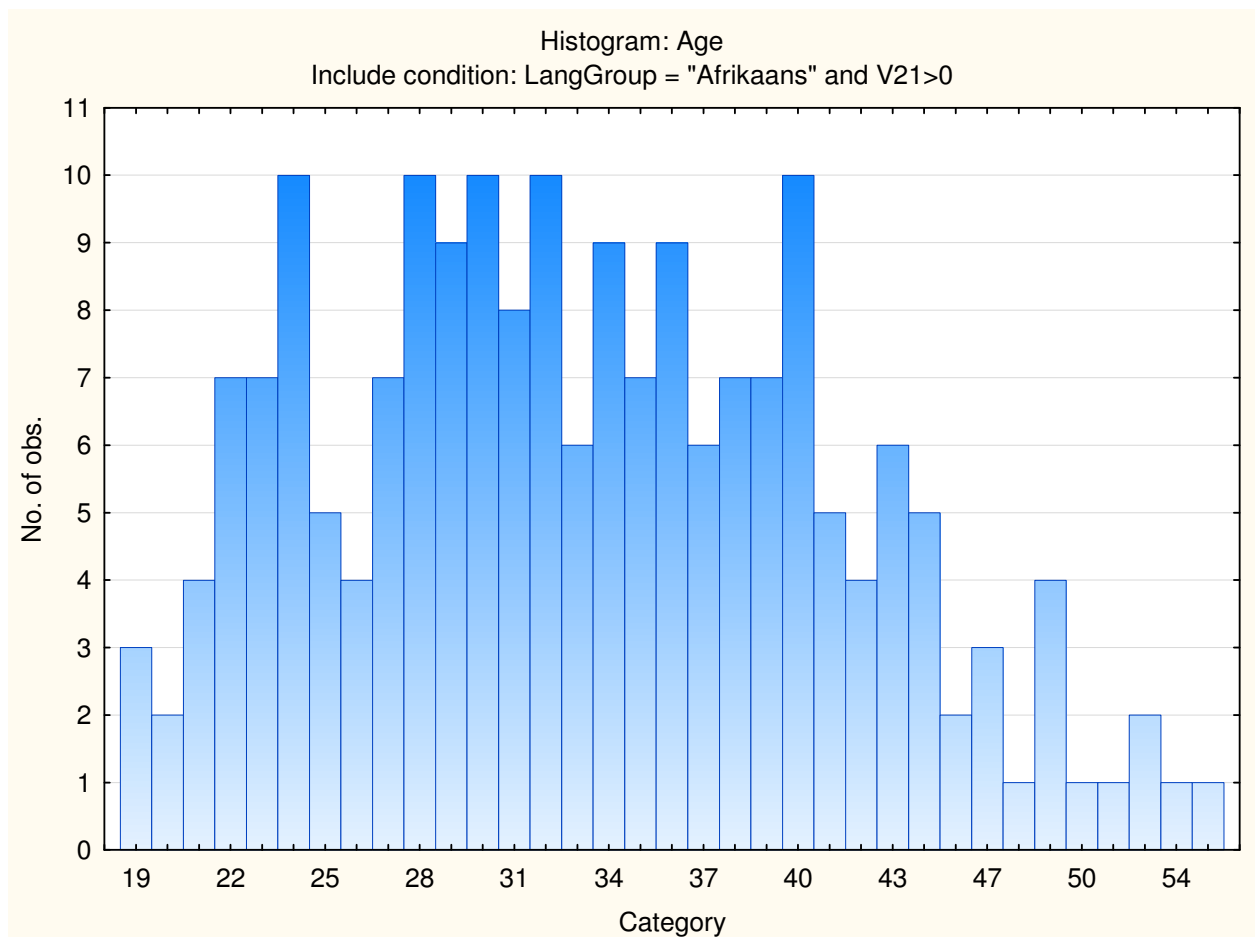
**Sample composition: Graduate Abstract Reasoning Test**

| Category | Frequency table: Sex |                  |          |                    |
|----------|----------------------|------------------|----------|--------------------|
|          | Count                | Cumulative Count | Percent  | Cumulative Percent |
| F        | 72                   | 72               | 36.36364 | 36.3636            |
| M        | 125                  | 197              | 63.13131 | 99.4949            |
| U        | 1                    | 198              | 0.50505  | 100.0000           |
| Missing  | 0                    | 198              | 0.00000  | 100.0000           |

| Category      | Frequency table: Education Group |                  |          |                    |
|---------------|----------------------------------|------------------|----------|--------------------|
|               | Count                            | Cumulative Count | Percent  | Cumulative Percent |
| Degree        | 31                               | 31               | 15.65657 | 15.6566            |
| Grade 12      | 63                               | 94               | 31.81818 | 47.4747            |
| Diploma       | 28                               | 122              | 14.14141 | 61.6162            |
| <Grade 12     | 8                                | 130              | 4.04040  | 65.6566            |
| Post Graduate | 32                               | 162              | 16.16162 | 81.8182            |
| Certificate   | 3                                | 165              | 1.51515  | 83.3333            |
| Missing       | 33                               | 198              | 16.66667 | 100.0000           |

| Category | Frequency table: Race Group |                  |          |                    |
|----------|-----------------------------|------------------|----------|--------------------|
|          | Count                       | Cumulative Count | Percent  | Cumulative Percent |
| Coloured | 94                          | 94               | 47.47475 | 47.4747            |
| European | 88                          | 182              | 44.44444 | 91.9192            |
| Asian    | 1                           | 183              | 0.50505  | 92.4242            |
| African  | 5                           | 188              | 2.52525  | 94.9495            |
| Missing  | 10                          | 198              | 5.05051  | 100.0000           |

| Variable | Descriptive Statistics |          |          |          |     |                  |
|----------|------------------------|----------|----------|----------|-----|------------------|
|          | Mean                   | Std.Dev  | Minimum  | Maximum  | N   | No.cases Missing |
| Age      | 33.38342               | 8.143129 | 19.00000 | 59.00000 | 193 | 5                |

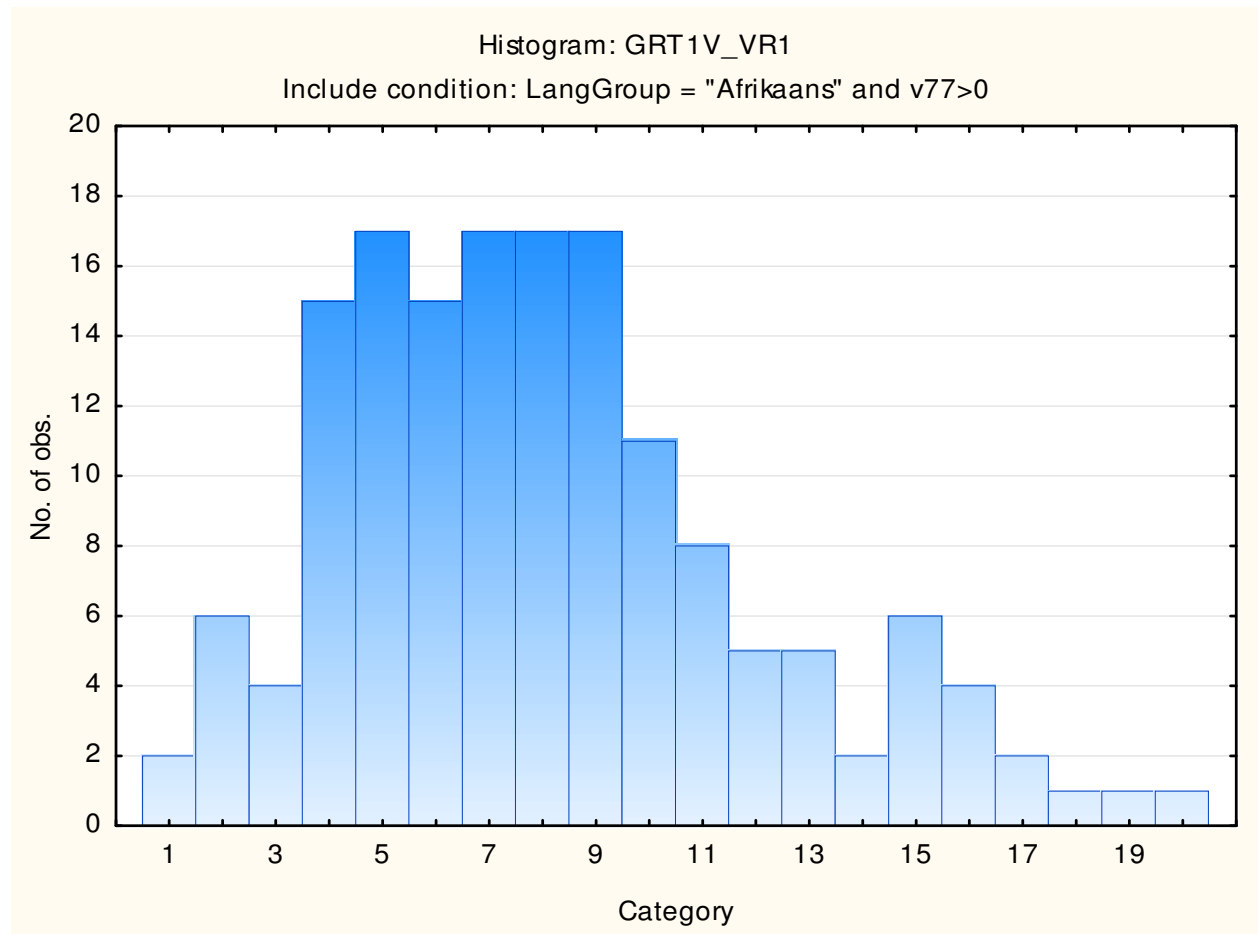


## Descriptive statistics on Graduate Reasoning Test Battery subtests

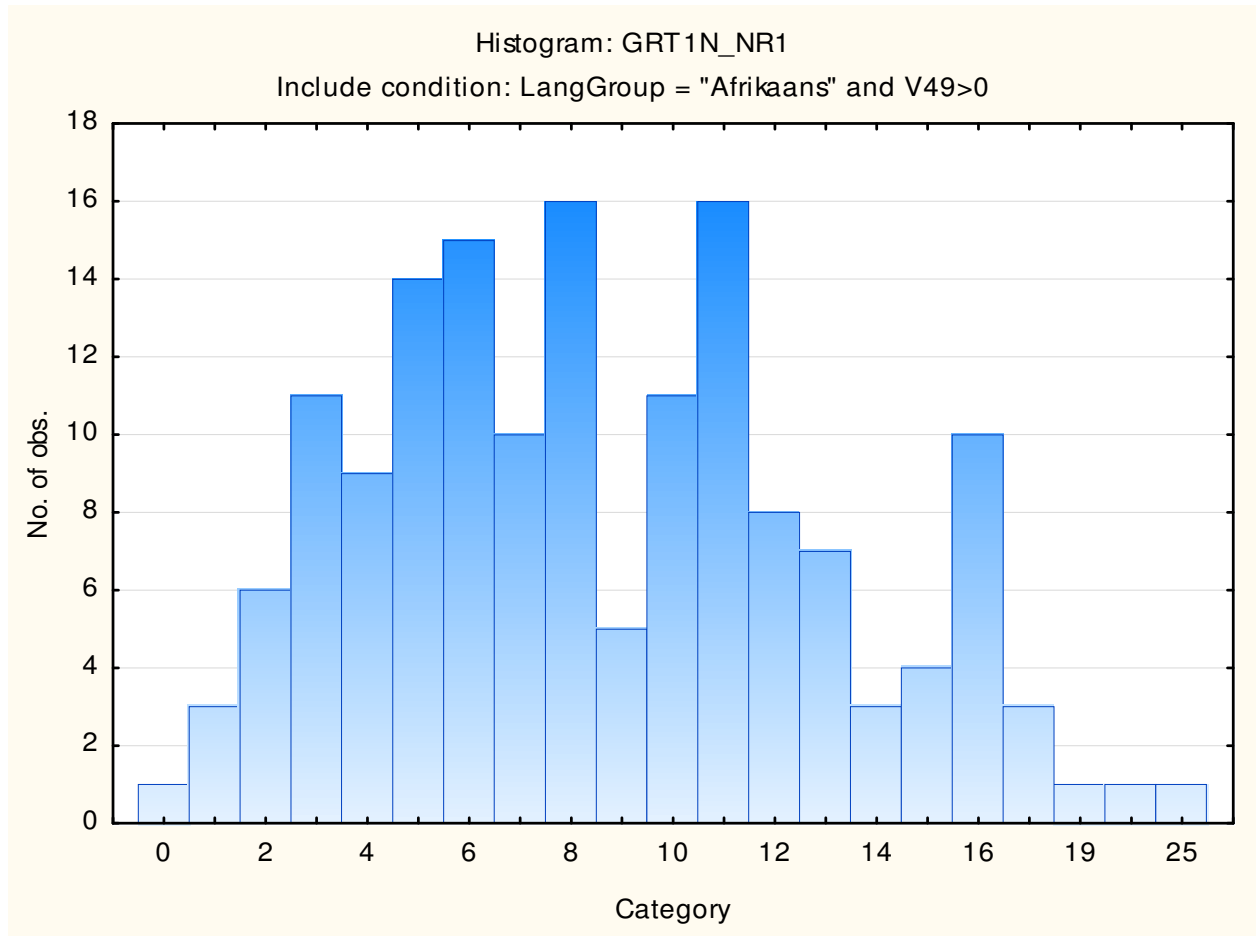
| Variable                                     | Descriptive Statistics |          |          |          |     |                  |
|--|------------------------|----------|----------|----------|-----|------------------|
|  | Mean                   | Std.Dev  | Minimum  | Maximum  | N   | No.cases Missing |
| Graduate verbal reasoning                    | 8.10897                | 3.909581 | 1.000000 | 20.00000 | 156 | 0                |
| Graduate verbal reasoning items attempted    | 20.10897               | 6.226451 | 7.000000 | 30.00000 | 156 | 0                |
| Graduate numerical reasoning                 | 8.65161                | 4.646733 | 0.000000 | 25.00000 | 155 | 0                |
| Graduate numerical reasoning items attempted | 16.39355               | 5.036873 | 5.000000 | 25.00000 | 155 | 0                |
| Graduate abstract reasoning                  | 10.61616               | 4.462380 | 1.000000 | 25.00000 | 198 | 0                |
| Graduate abstract reasoning items attempted  | 19.50000               | 4.562872 | 5.000000 | 25.00000 | 198 | 0                |

## Frequency distributions of Graduate Reasoning Test Battery subtests

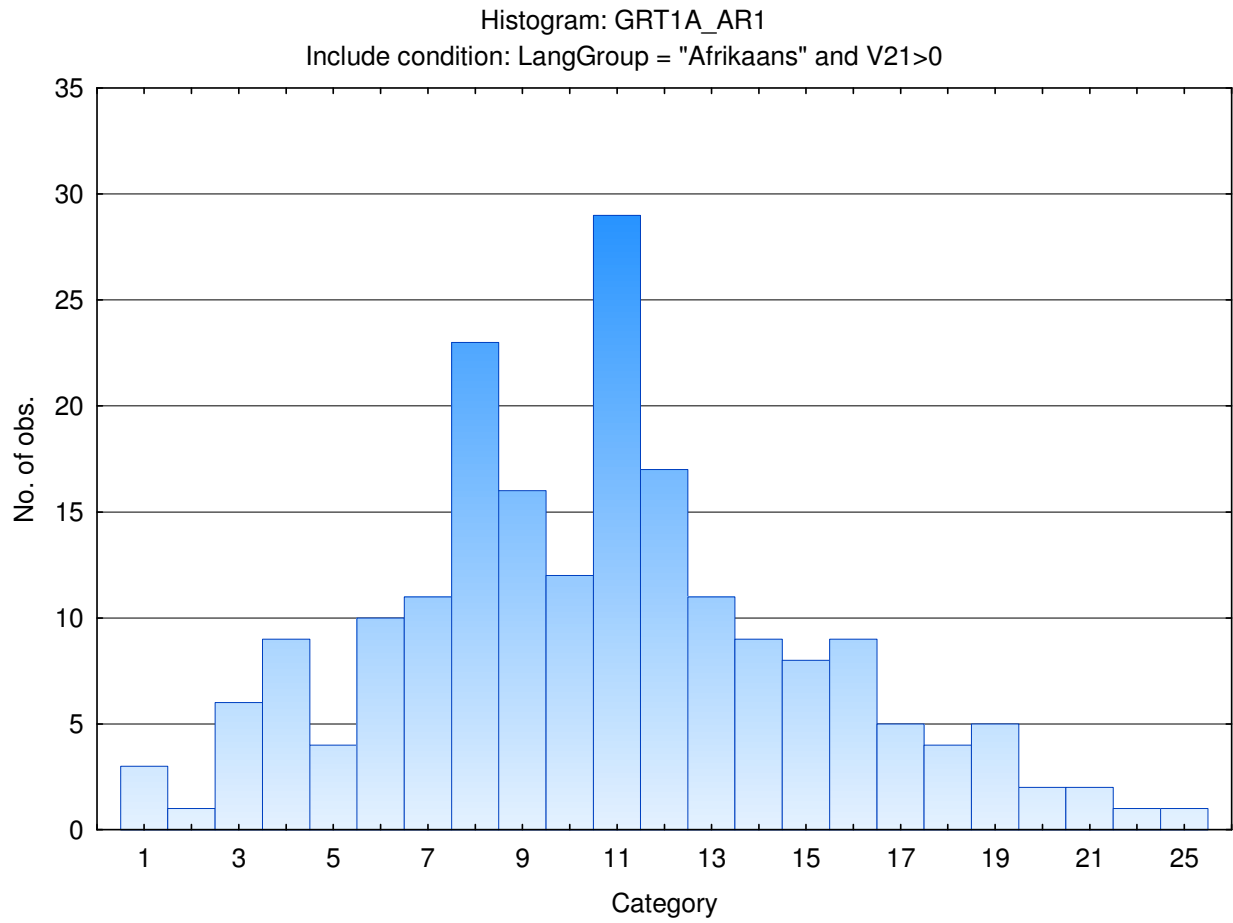
### Graduate verbal reasoning



## Graduate numerical reasoning



## Graduate abstract reasoning





## Stanine table

|   | S9_1 | S9_2  | S9_3  | S9_4  | S9_5  | S9_6  | S9_7  | S9_8  | S9_9  |
|---|------|-------|-------|-------|-------|-------|-------|-------|-------|
| <b>Graduate Verbal Reasoning</b>          | 1-1  | 2-3   | 4-5   | 6-7   | 8-9   | 10-11 | 12-12 | 13-14 | 15-20 |
| <b>Graduate Verbal Items Attempted</b>    | 7-9  | 10-12 | 13-15 | 16-18 | 19-21 | 22-24 | 25-27 | 28-30 |       |
| <b>Graduate Numerical Reasoning</b>       | 0-0  | 1-2   | 3-5   | 6-7   | 8-9   | 10-12 | 13-14 | 15-16 | 17-25 |
| <b>Graduate Numerical Items Attempted</b> | 5-7  | 8-10  | 11-12 | 13-15 | 16-17 | 18-20 | 21-22 | 23-25 |       |
| <b>Graduate Abstract Reasoning</b>        | 1-2  | 3-5   | 6-7   | 8-9   | 10-11 | 12-13 | 14-16 | 17-18 | 19-25 |
| <b>Graduate Abstract Items Attempted</b>  | 5-11 | 12-13 | 14-16 | 17-18 | 19-20 | 21-22 | 23-25 |       |       |