

Norm Group : SA Indigenous language speakers updated 2010

Norm Type:

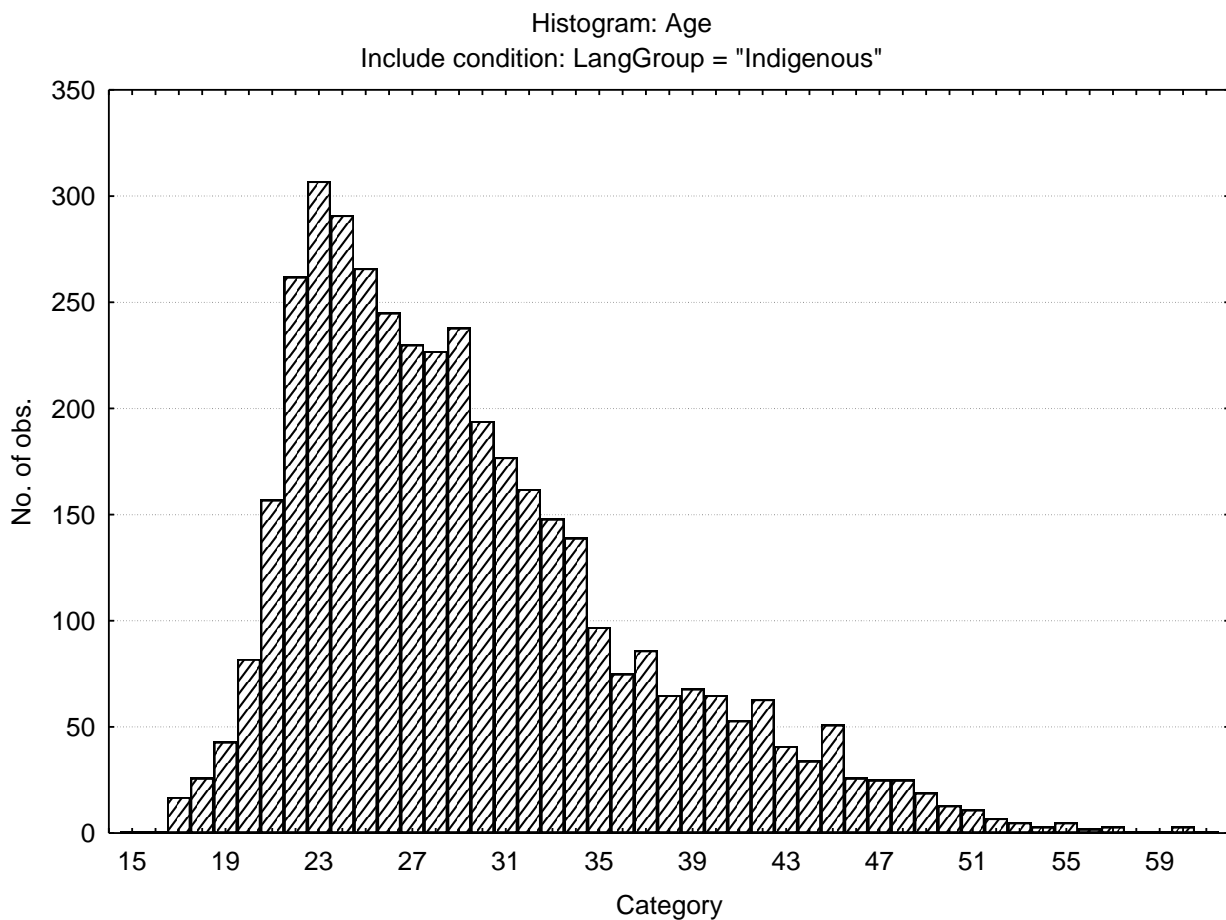
Standard deviation norm.

Sample composition

The sample consisted of 4061 speakers of indigenous African languages tested in the period up to February 2010 by Psytech SA and collaborators.

Descriptive statistics and frequency distribution for age

Variable	Descriptive Statistics (15fqplus raws and resps dups rem.sta) Include condition: LangGroup = "Indigenous"					
	Mean	Std.Dev	Minimum	Maximum	N	No.cases Missing
Age	29.48362	7.315113	15.00000	62.00000	4061	84



Frequency table for sex

Category	Frequency table: Sex			
	Count	Cumulative Count	Percent	Cumulative Percent
F	1643	1643	39.63812	39.6381
M	2494	4137	60.16888	99.8070
Missing	8	4145	0.19300	100.0000

Frequency table for educational level

Category	Frequency table: Education (15fqplus raws and resp dup s rem.sta)Include condition: LangGroup = "Indigenous"			
	Count	Cumulative Count	Percent	Cumulative Percent
Grade 12	923	923	22.26779	22.2678
Degree	697	1620	16.81544	39.0832
Post Graduate	577	2197	13.92039	53.0036
Technikon	726	2923	17.51508	70.5187
University diploma	441	3364	10.63932	81.1580
Grade 10 or 11	86	3450	2.07479	83.2328
Vocational Training	169	3619	4.07720	87.3100
Diploma	103	3722	2.48492	89.7949
Certificate	95	3817	2.29192	92.0869
Missing	328	4145	7.91315	100.0000

Racial composition of the sample

Category	Frequency table: RaceGroup			
	Count	Cumulative Count	Percent	Cumulative Percent
African	4077	4077	98.35947	98.3595
European	18	4095	0.43426	98.7937
Coloured	7	4102	0.16888	98.9626
Asian	13	4115	0.31363	99.2762
Missing	30	4145	0.72376	100.0000

Language composition of the sample

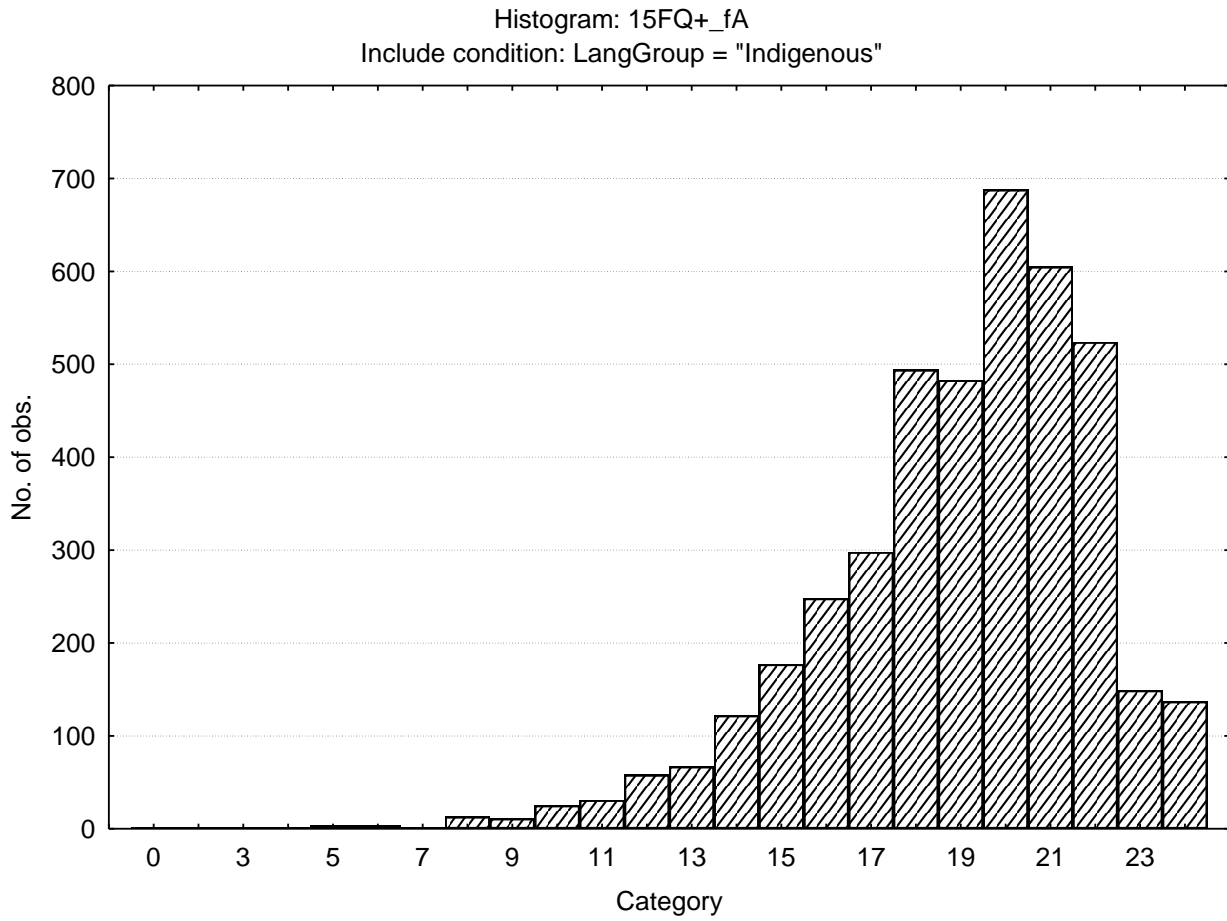
Category	Frequency table: Language			
	Count	Cumulative Count	Percent	Cumulative Percent
isiZulu	1589	1589	38.33534	38.3353
isiXhosa	1048	2637	25.28347	63.6188
Sesotho	741	3378	17.87696	81.4958
Sepedi	288	3666	6.94813	88.4439
Xitsonga	184	3850	4.43908	92.8830
Tshivenda	137	3987	3.30519	96.1882
siSwati	102	4089	2.46080	98.6490
isiNdebele	56	4145	1.35103	100.0000
Missing	0	4145	0.00000	100.0000

Descriptive statistics on 15FQ+ scales

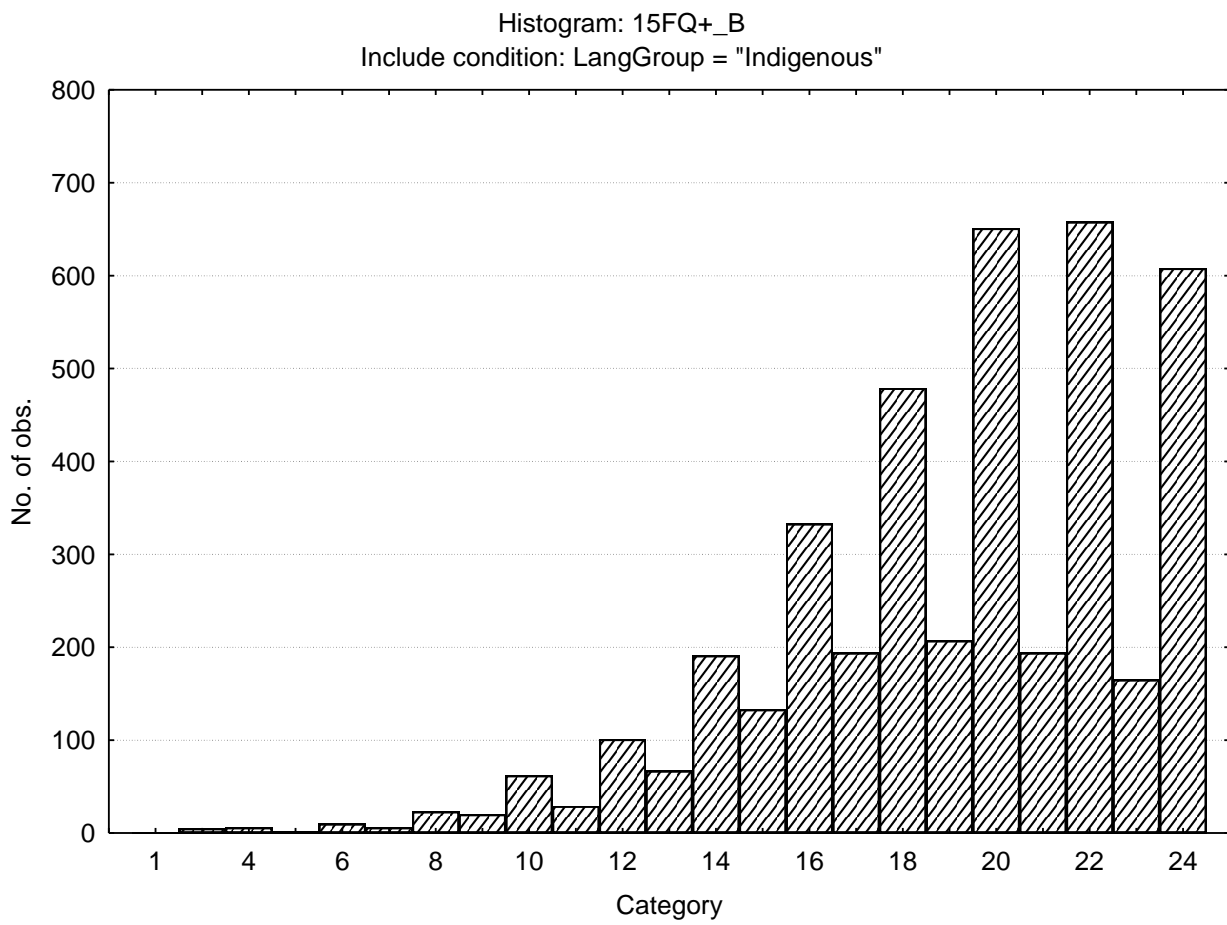
Variable		Descriptive Statistics (15fqplus raws and resps dups rem.sta)Include condition: LangGroup = "Indigenous"					
		Mean	Std.Dev	Minimum	Maximum	N	No.cases Missing
15FQ+_fA	Distant aloof - empathic	18.96381	3.04814	0.000000	24.0000	4145	0
15FQ+_B	Intellectance	19.14113	3.84762	1.000000	24.0000	4145	0
15FQ+_fC	Affected by feelings - emotionally stable	17.50302	4.33932	1.000000	24.0000	4145	0
15FQ+_fE	Accommodating - Dominant	16.38022	3.81355	1.000000	24.0000	4145	0
15FQ+_fF	Sober serious - Enthusiastic	14.26924	5.22167	0.000000	24.0000	4145	0
15FQ+_fG	Expedient - Conscientious	20.04005	3.81793	0.000000	24.0000	4145	0
15FQ+_fH	Retiring - Socially bold	16.57057	5.20783	0.000000	24.0000	4145	0
15FQ+_fI	Tough Minded - Tender minded	14.65718	4.67015	0.000000	24.0000	4145	0
15FQ+_fL	Trusting - Suspicious	10.71484	4.49986	0.000000	24.0000	4145	0
15FQ+_fM	Concrete - Abstract	10.32883	3.31745	0.000000	24.0000	4145	0
15FQ+_fN	Direct - Restrained	20.33800	3.12950	1.000000	24.0000	4145	0
15FQ+_fO	Self-assured - Apprehensive	11.85308	4.82846	0.000000	24.0000	4145	0
15FQ+_fQ1	Conventional - Radical	9.08613	4.27139	0.000000	24.0000	4145	0
15FQ+_fQ2	Group - orientated - Self-sufficient	6.96357	4.26090	0.000000	24.0000	4145	0
15FQ+_fQ3	Informal- self disciplined	20.36212	2.75799	0.000000	24.0000	4145	0
15FQ+_fQ4	Composed - tense driven	7.65404	4.36625	0.000000	24.0000	4145	0
15FQ+_SD	Social desirability	11.77756	3.29937	0.000000	16.0000	4145	0
15FQ+_CT	Central Tendency	11.62726	13.56108	0.000000	128.0000	4145	0
15FQ+_INF	Infrequency	1.53486	1.74061	0.000000	16.0000	4145	0
15FQ+_EIQ	Derived score: Emotional Intelligence	24.19421	3.72682	0.000000	30.0000	4145	0
15FQ+_WA	Derived score: Work attitude	27.20917	3.84571	0.000000	32.0000	4145	0
15FQ+_fGOOD	Faking good	7.95199	2.33187	0.000000	12.0000	4145	0
15FQ+_fBAD	Faking bad	4.31870	2.19358	0.000000	12.0000	4145	0

Frequency distributions for 15FQ+ scales

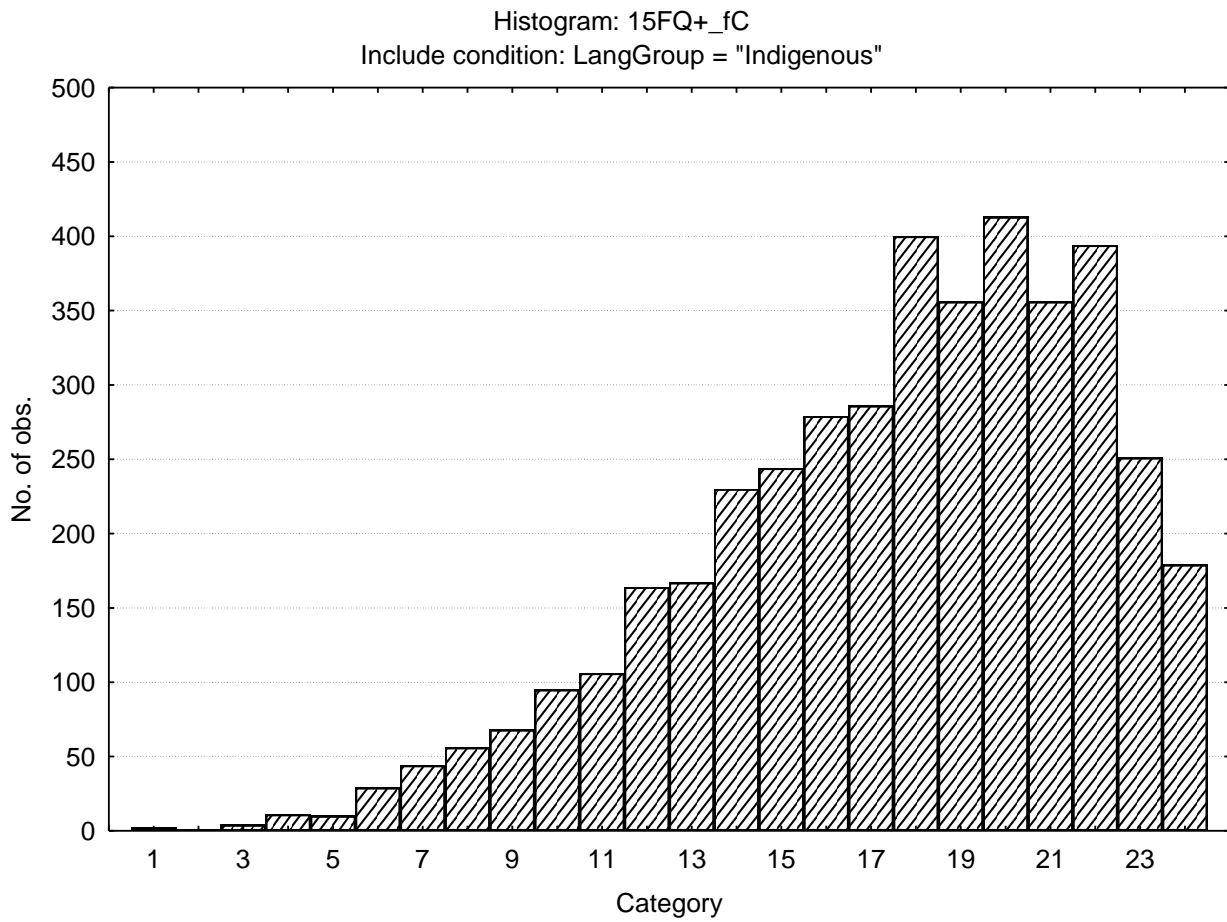
Distant aloof - empathic



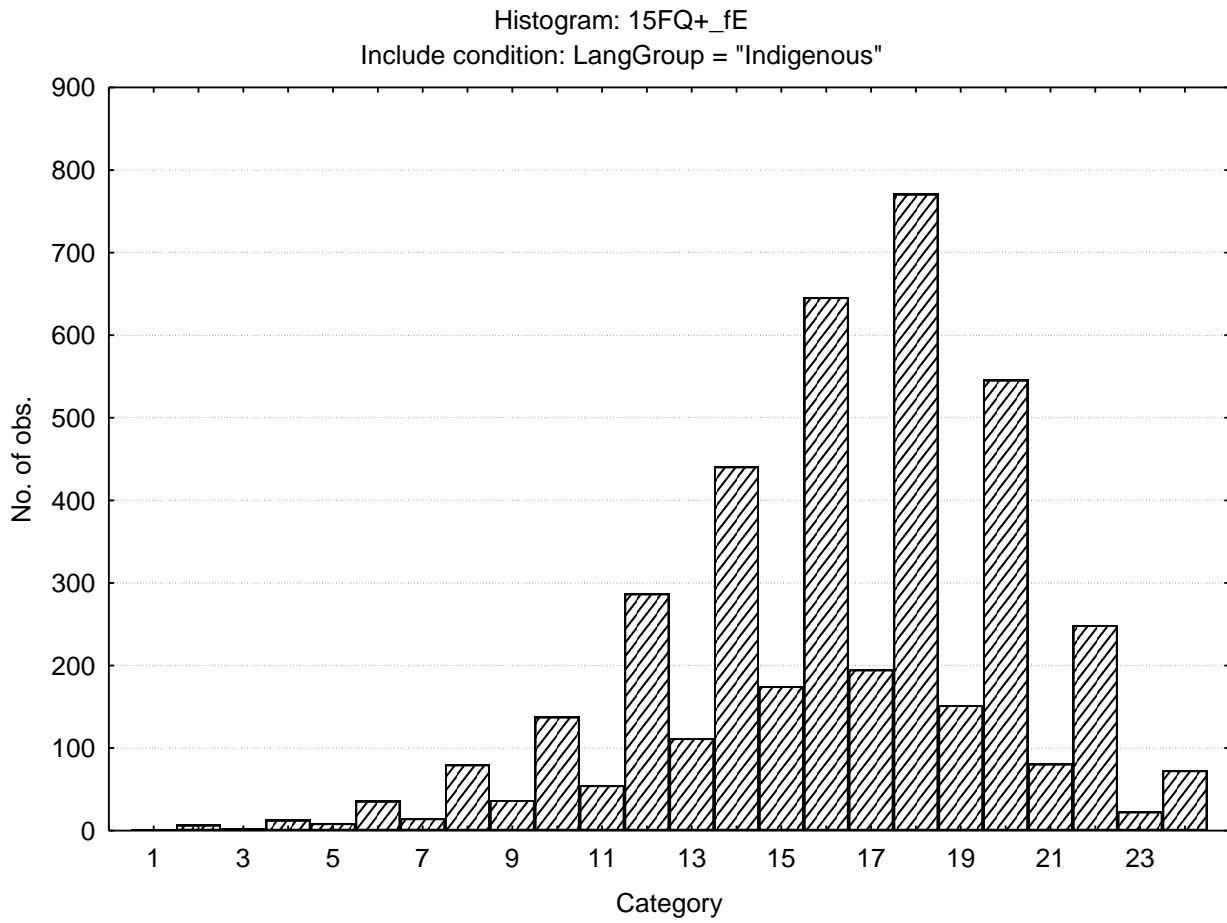
Intellectance



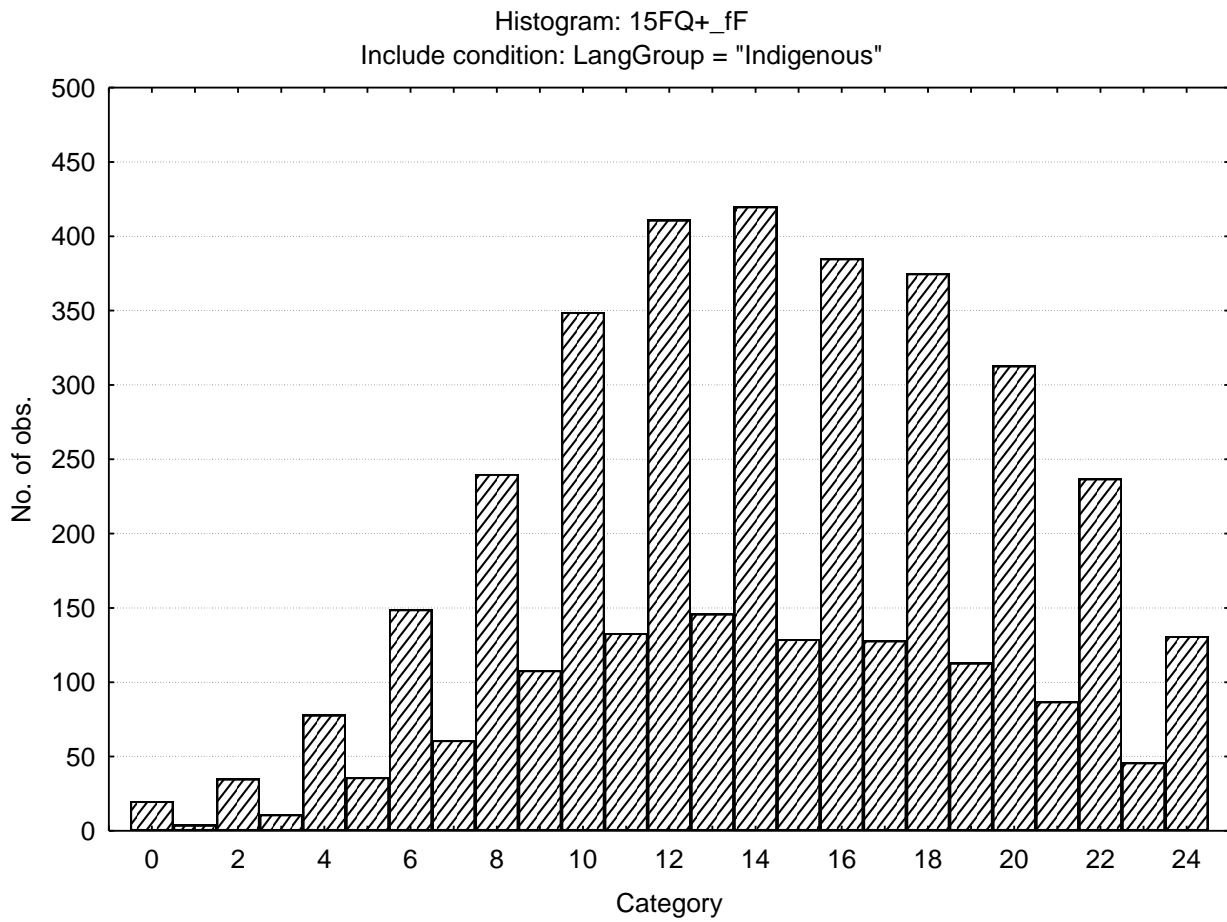
Affected by feelings - emotionally stable



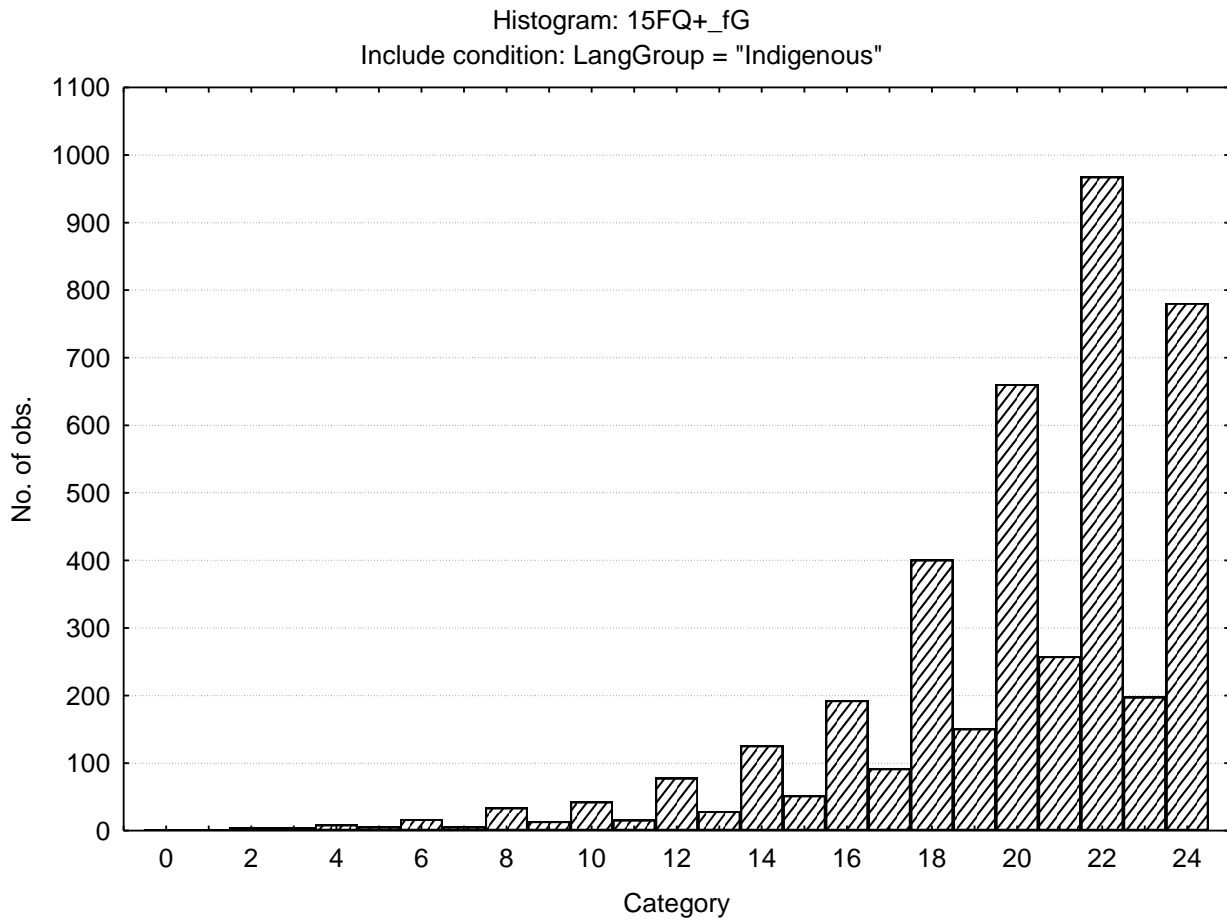
Accommodating - Dominant



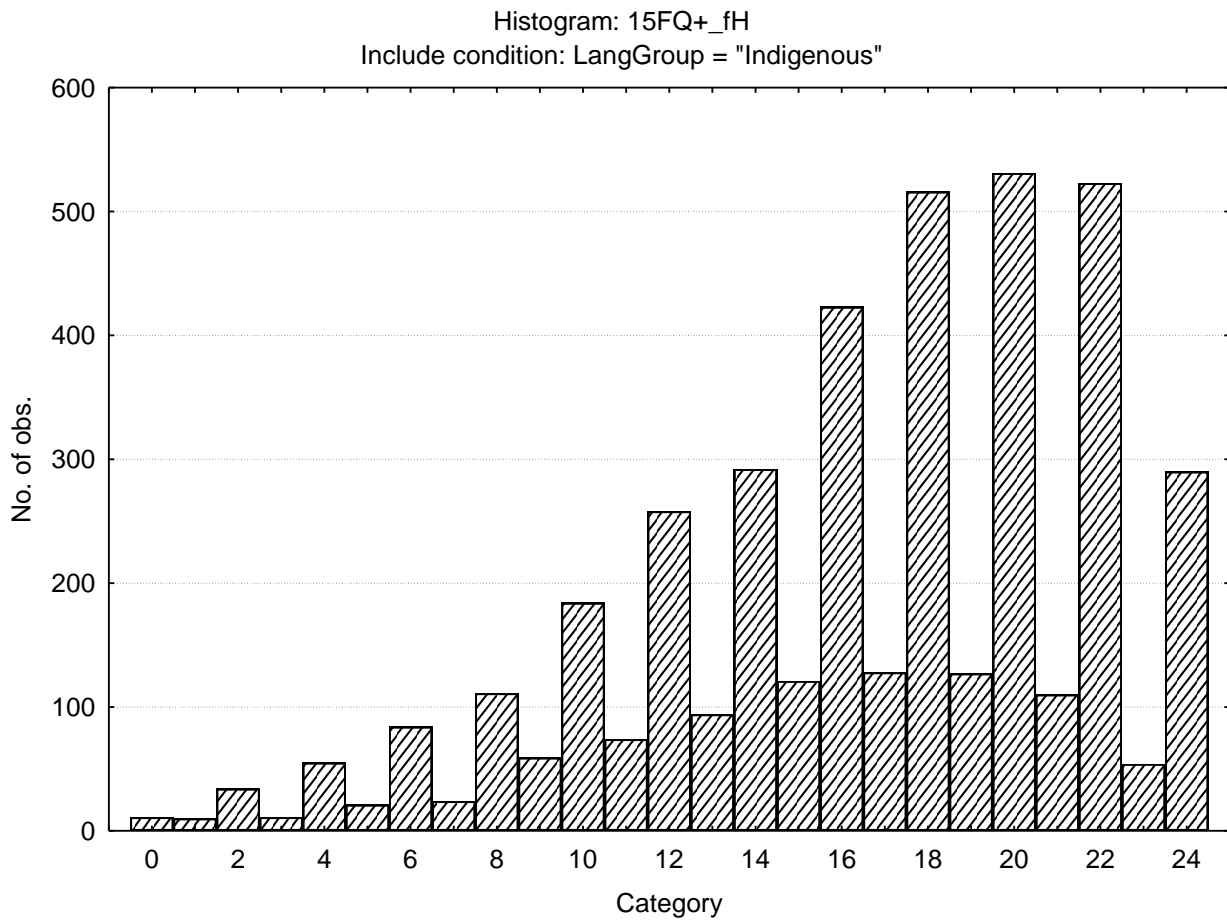
Sober serious - Enthusiastic



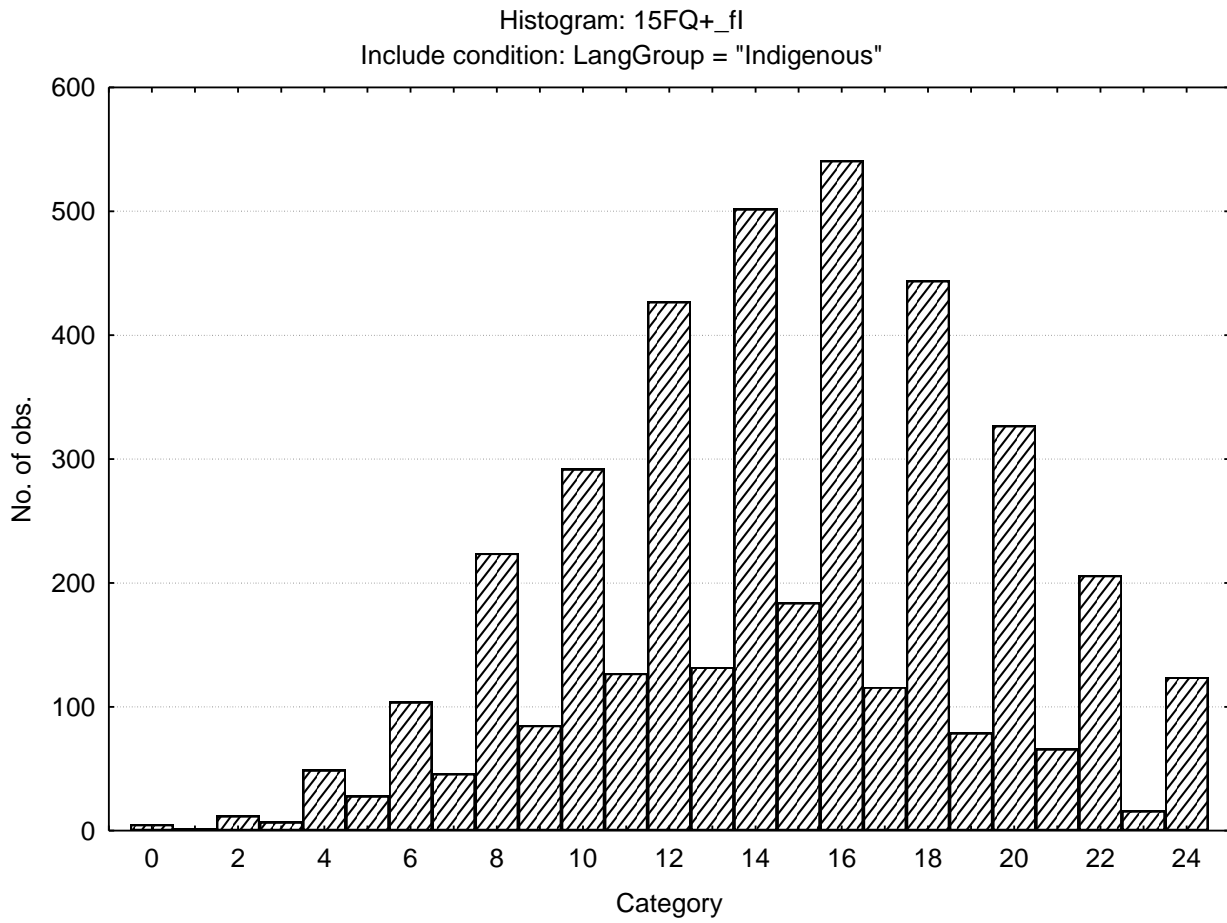
Expedient - Conscientious



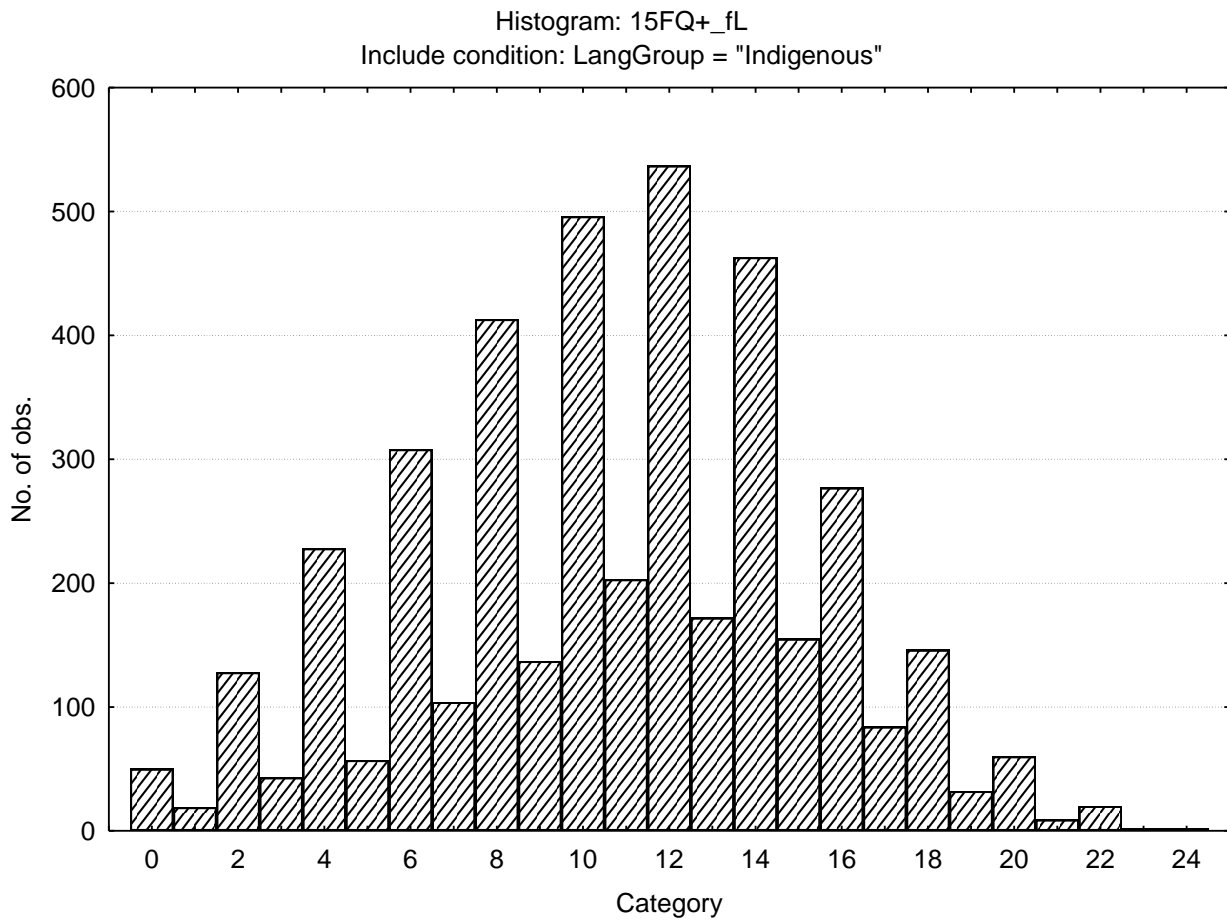
Retiring - Socially bold



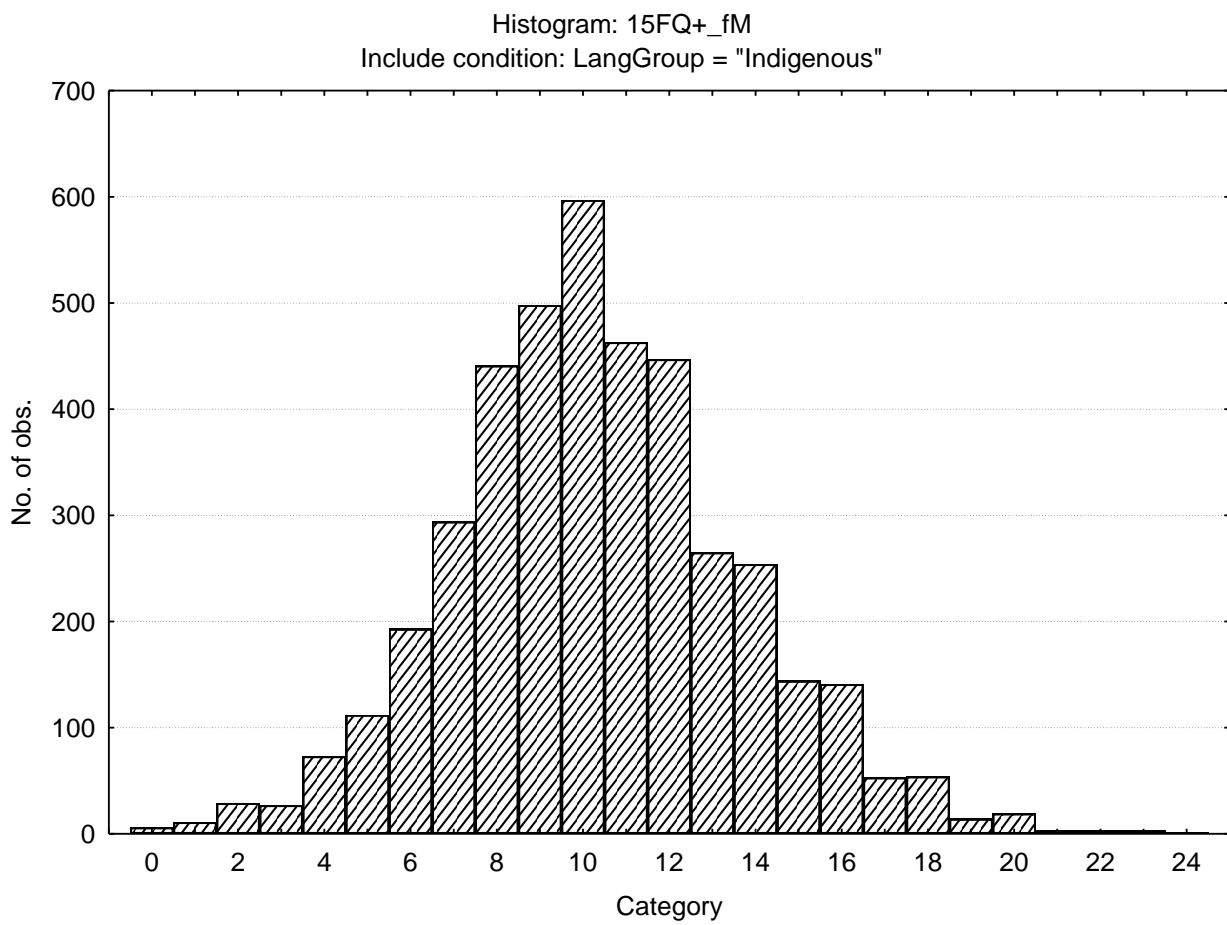
Tough Minded - Tender minded



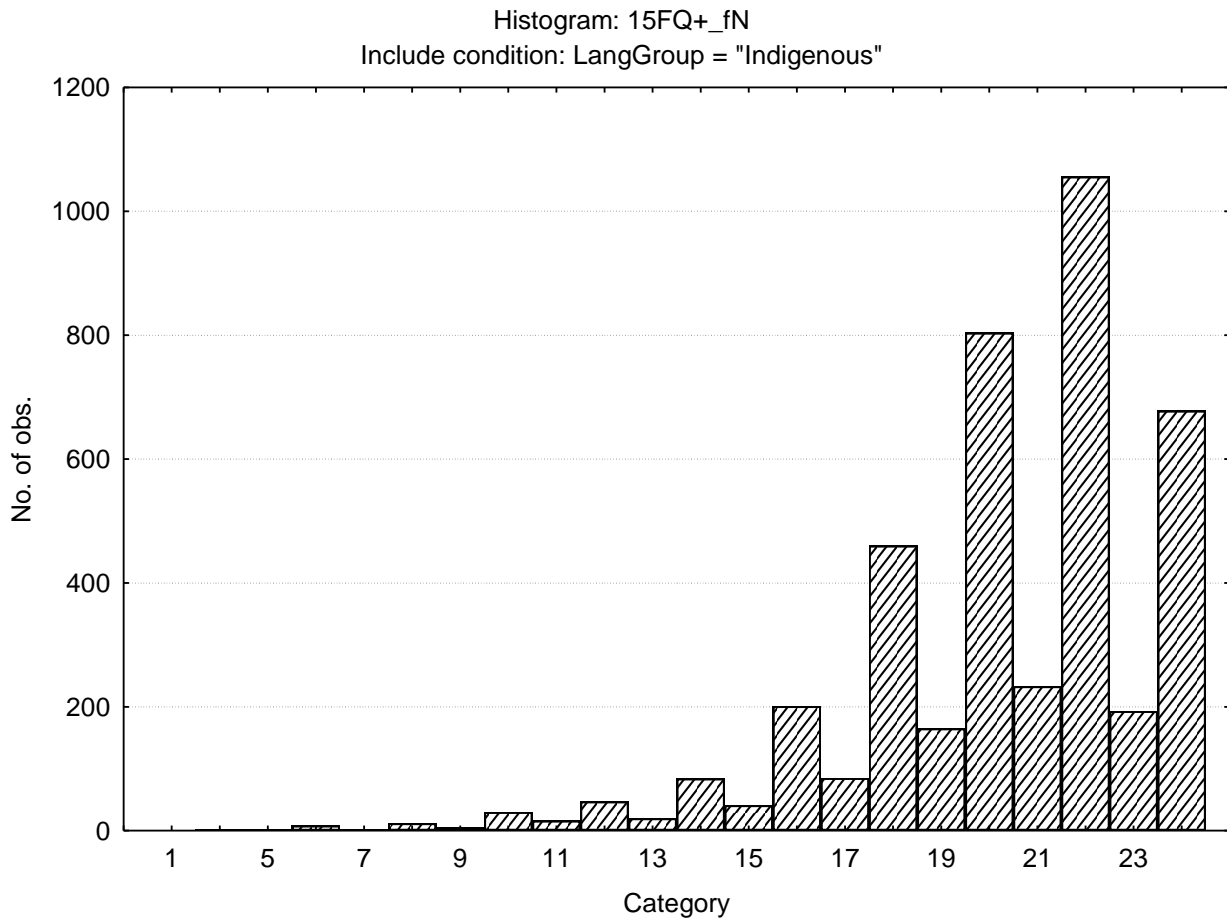
Trusting - Suspicious



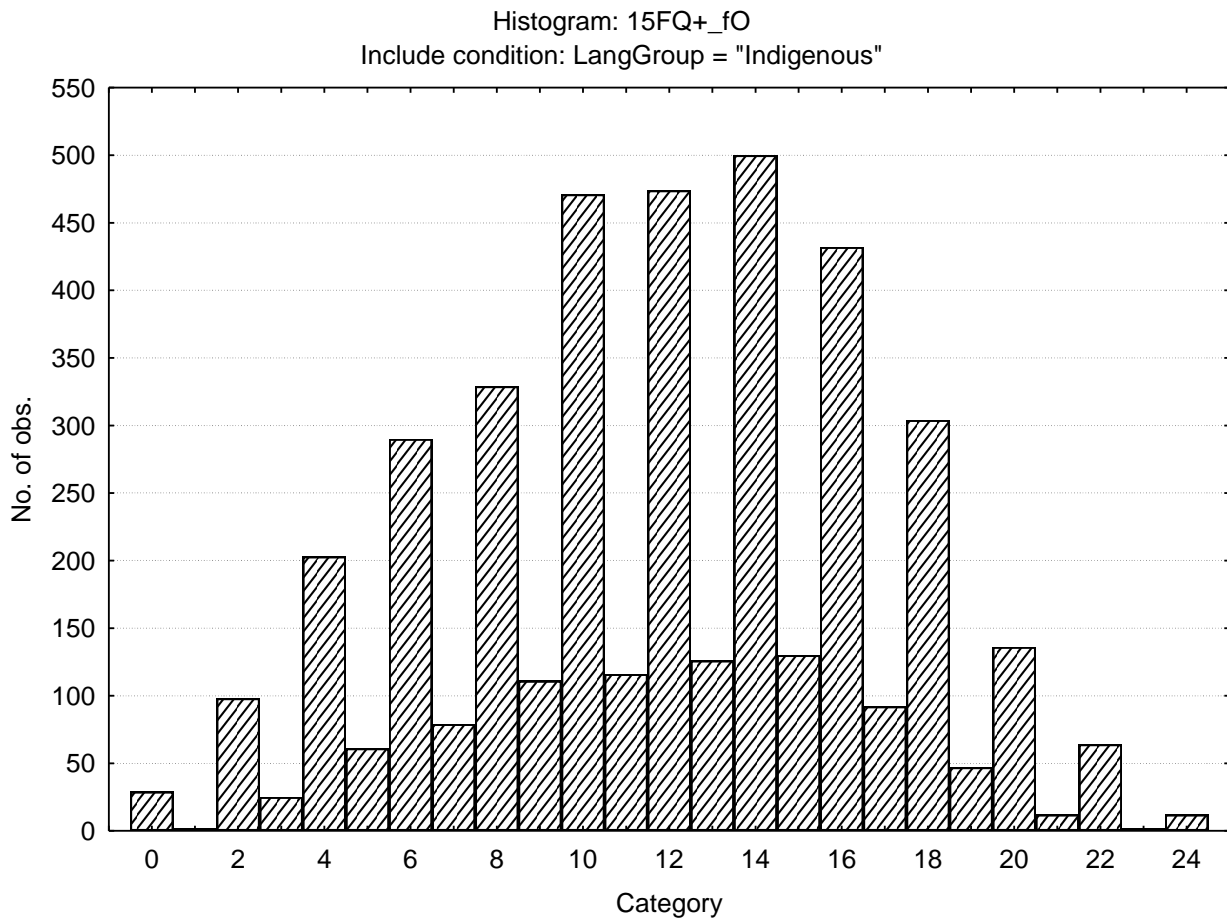
Concrete - Abstract



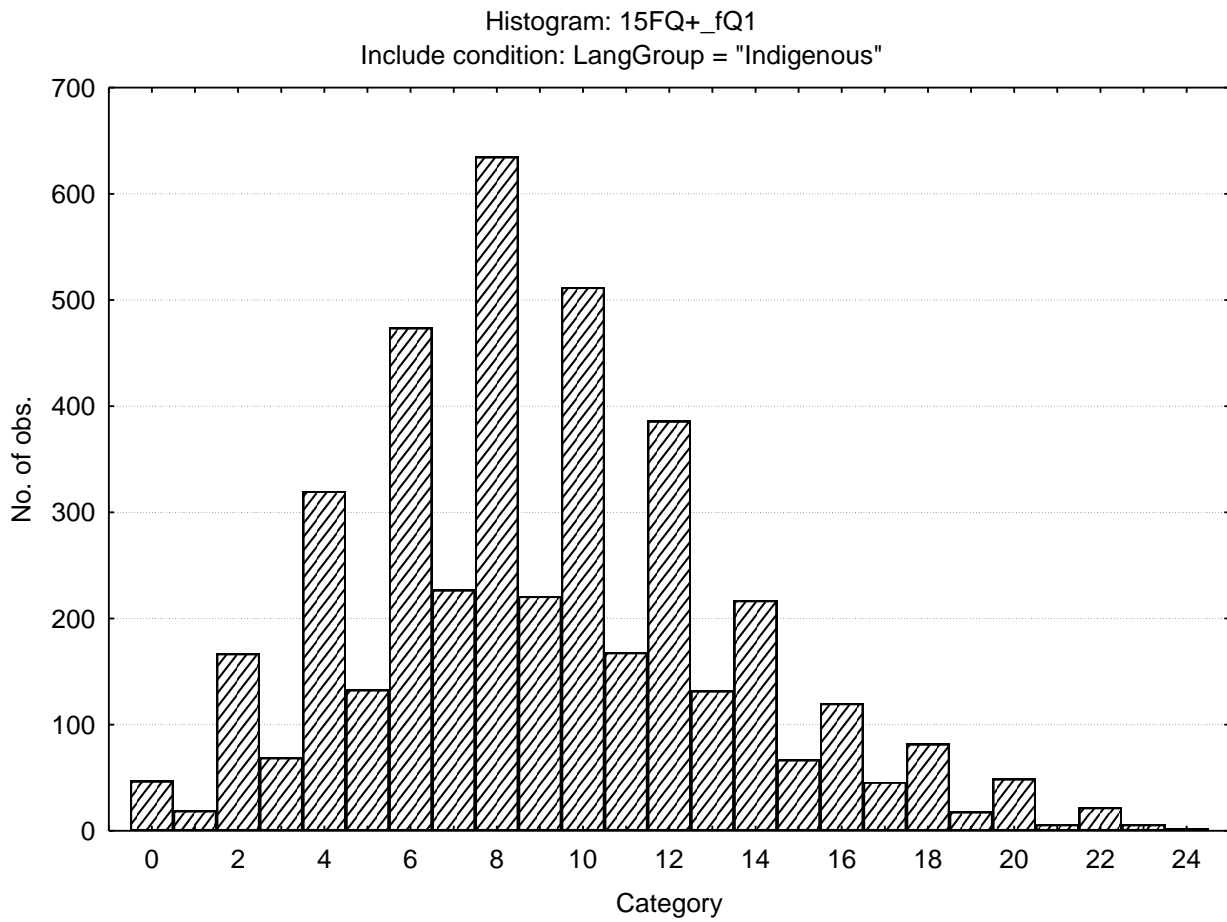
Direct - Restrained



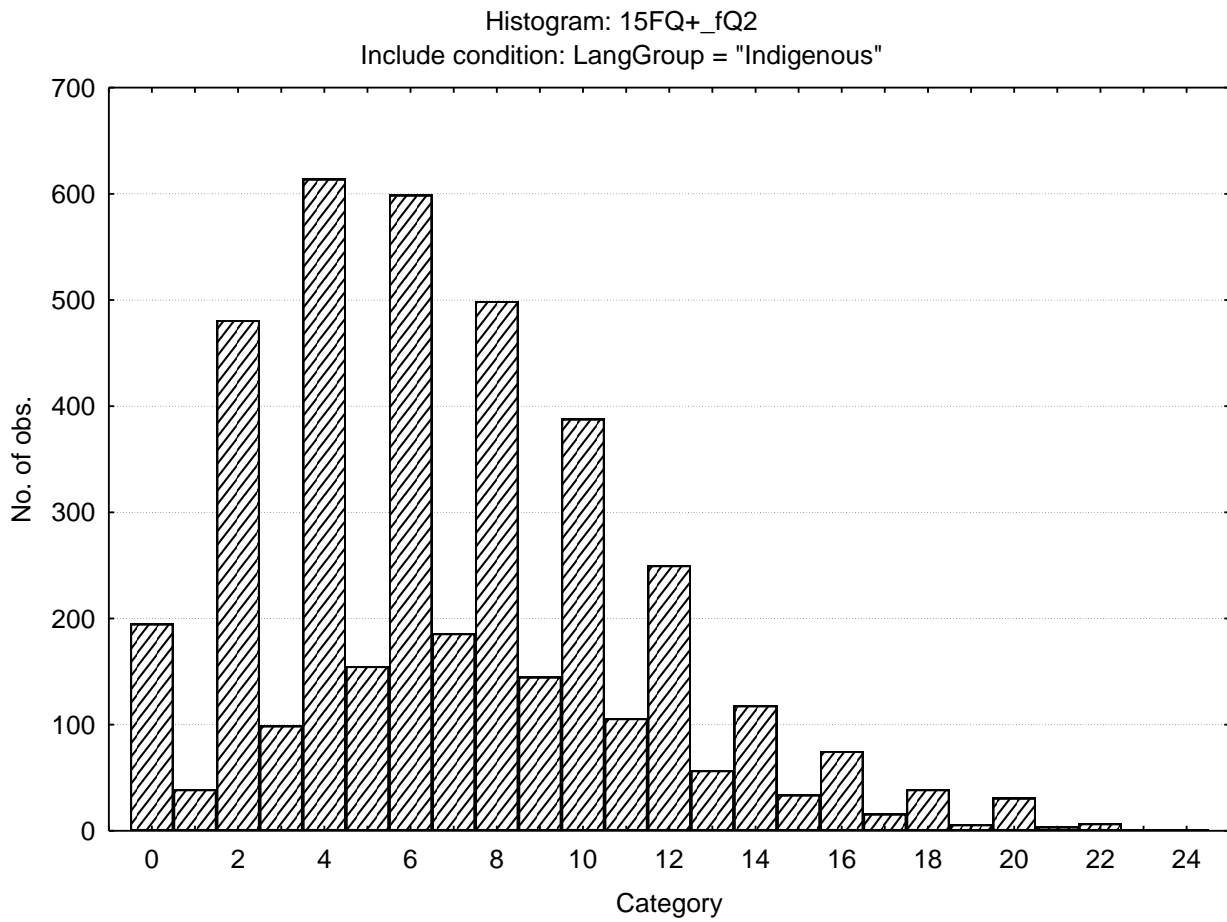
Self-assured - Apprehensive



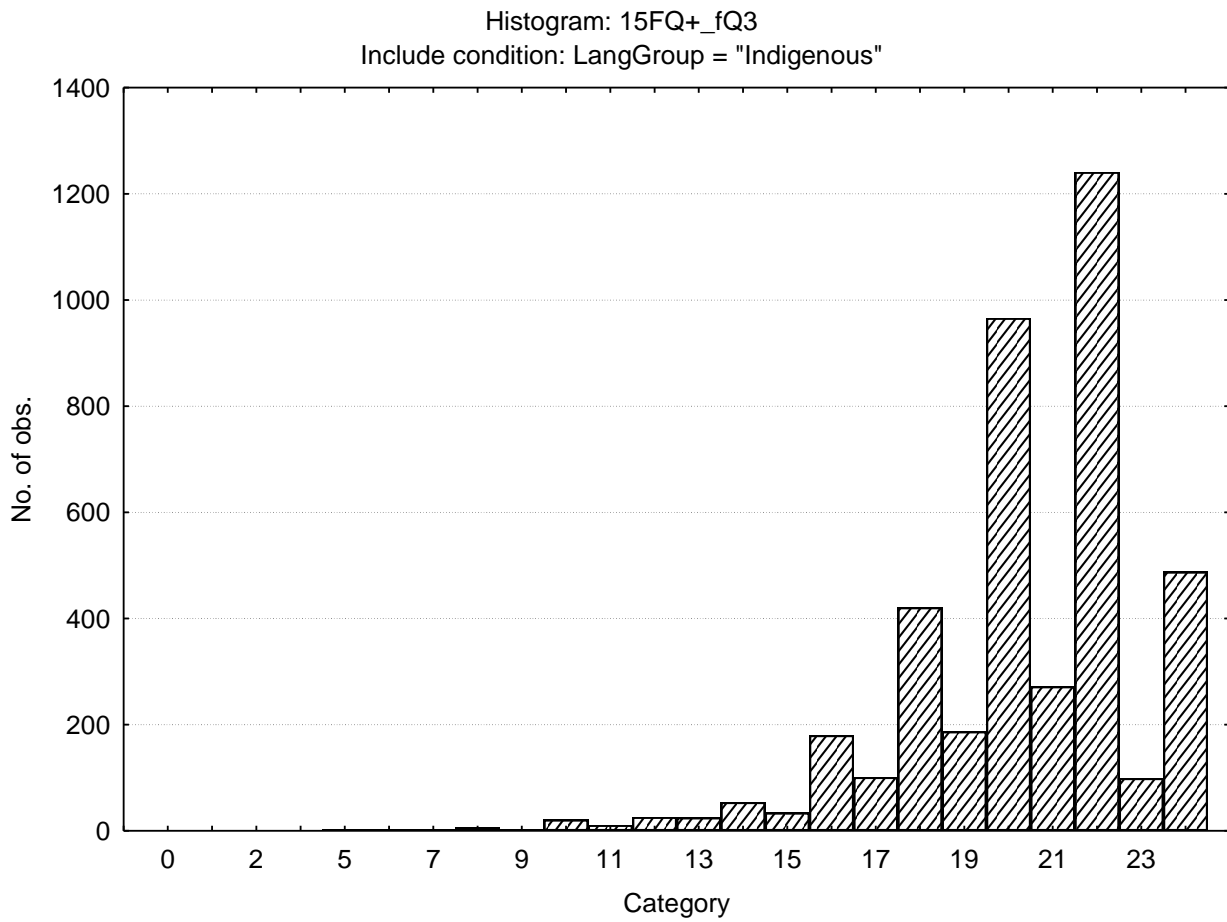
Conventional - Radical



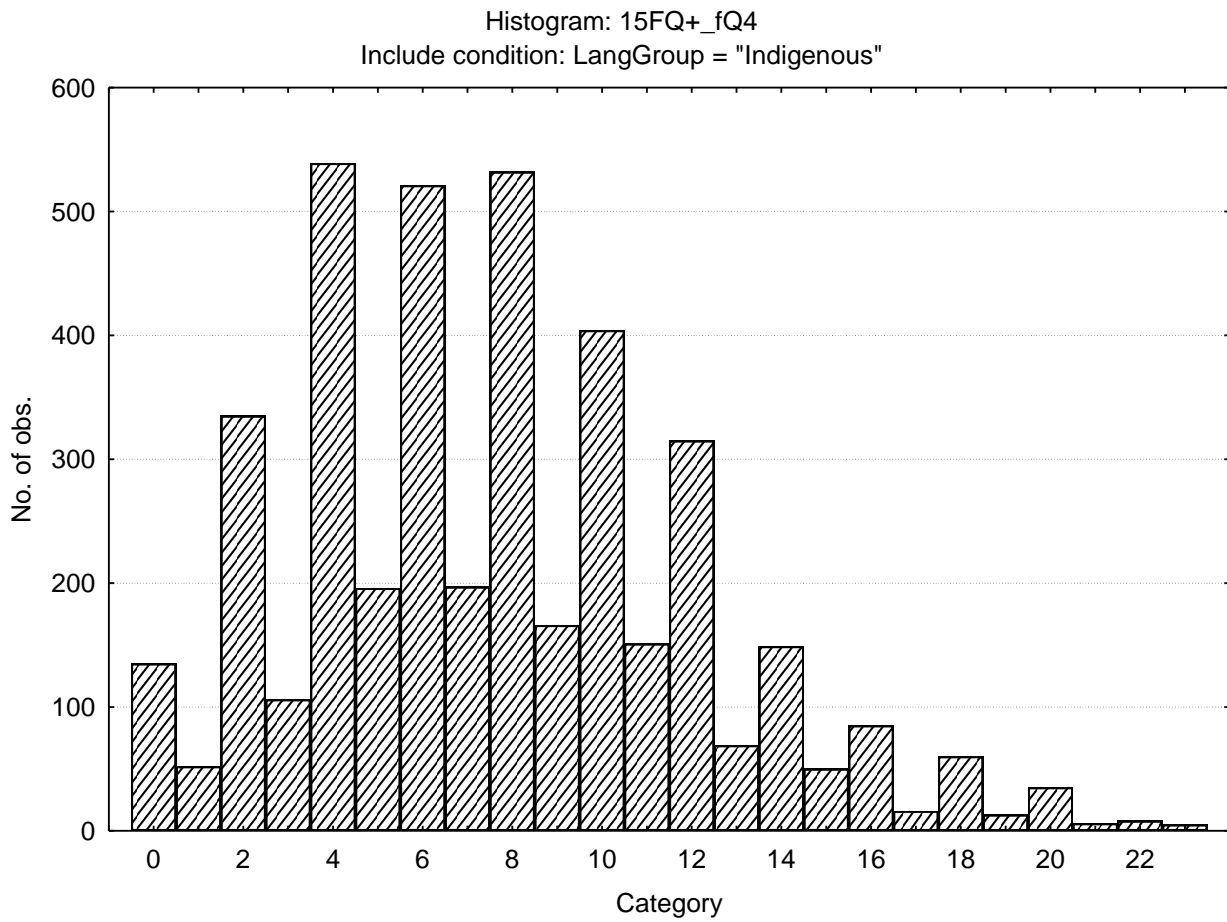
Group - orientated - Self-sufficient



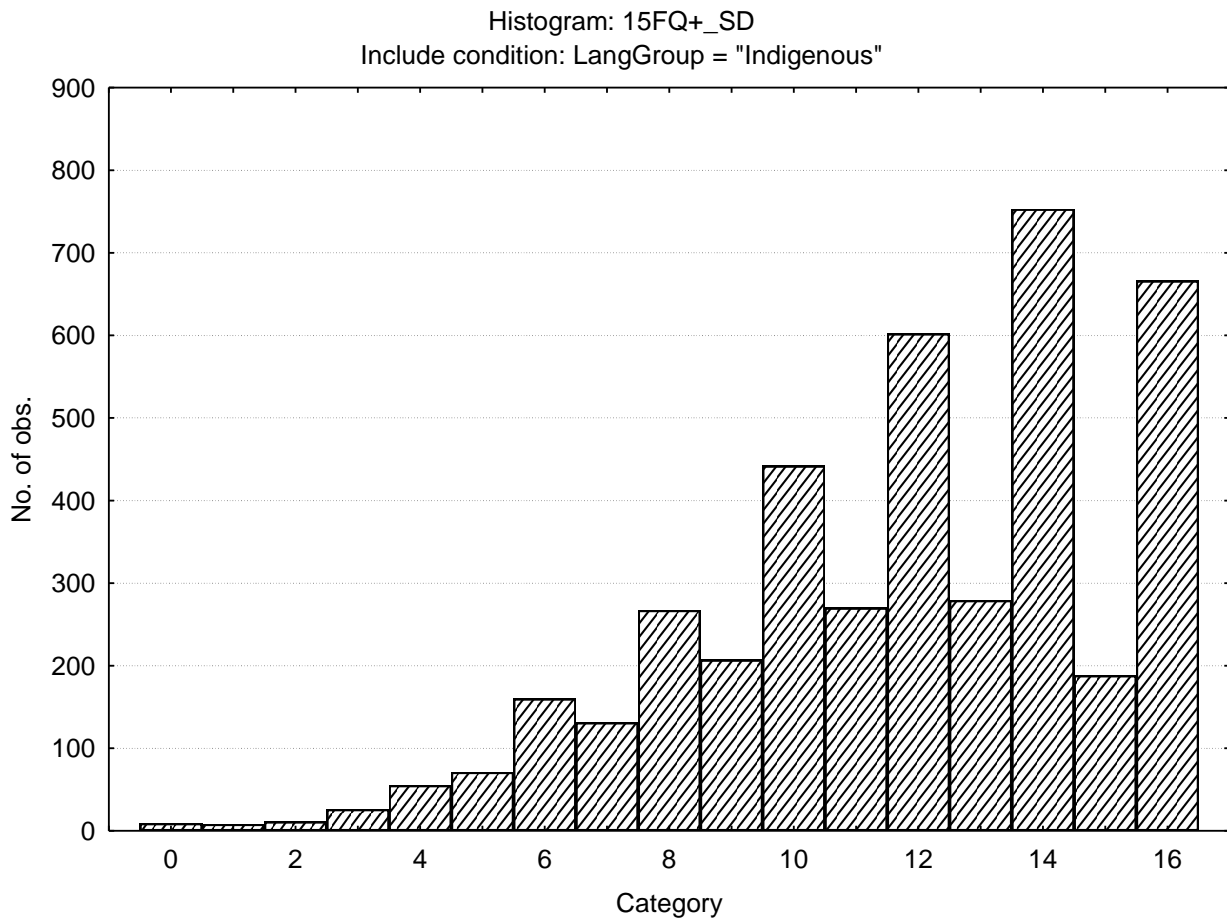
Informal- self disciplined



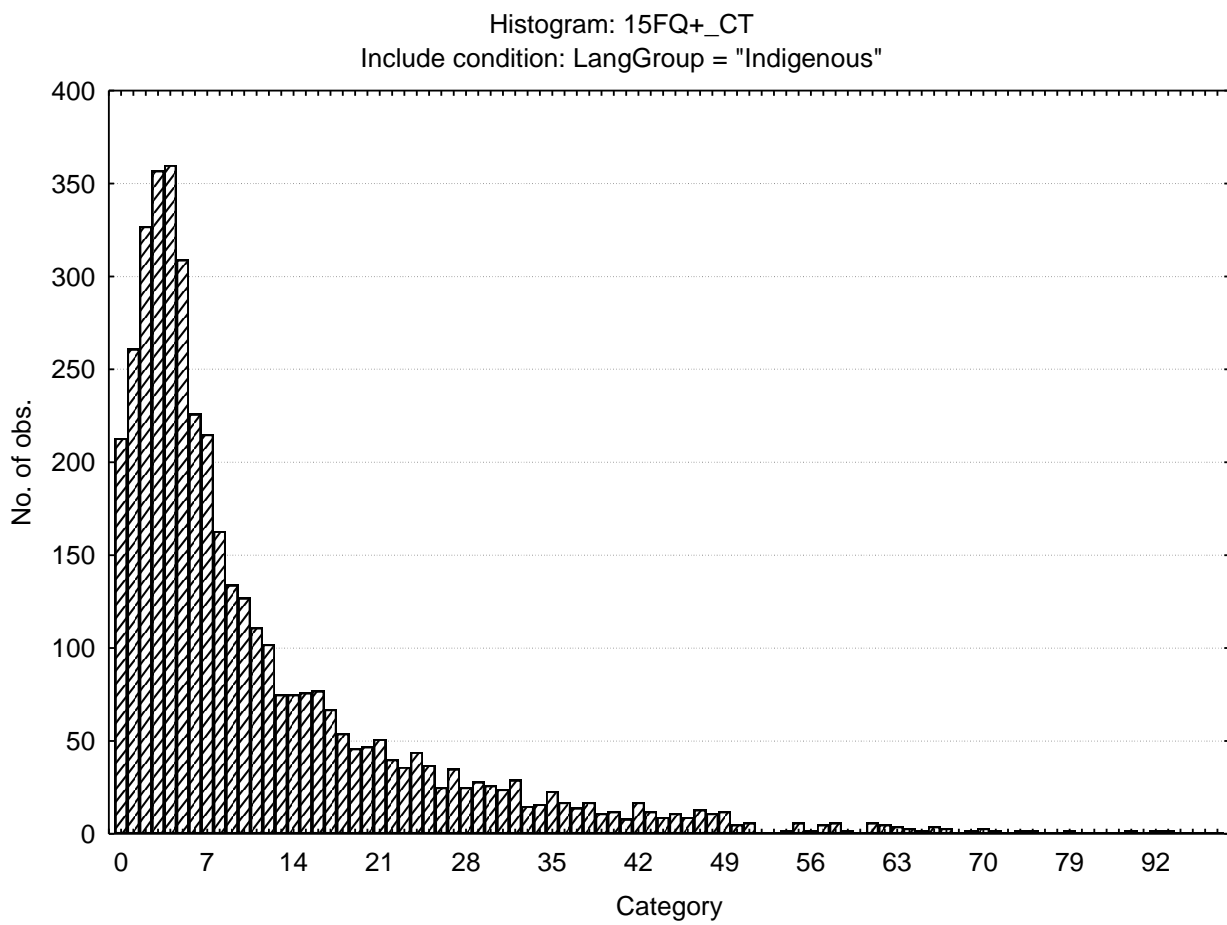
Composed - tense driven



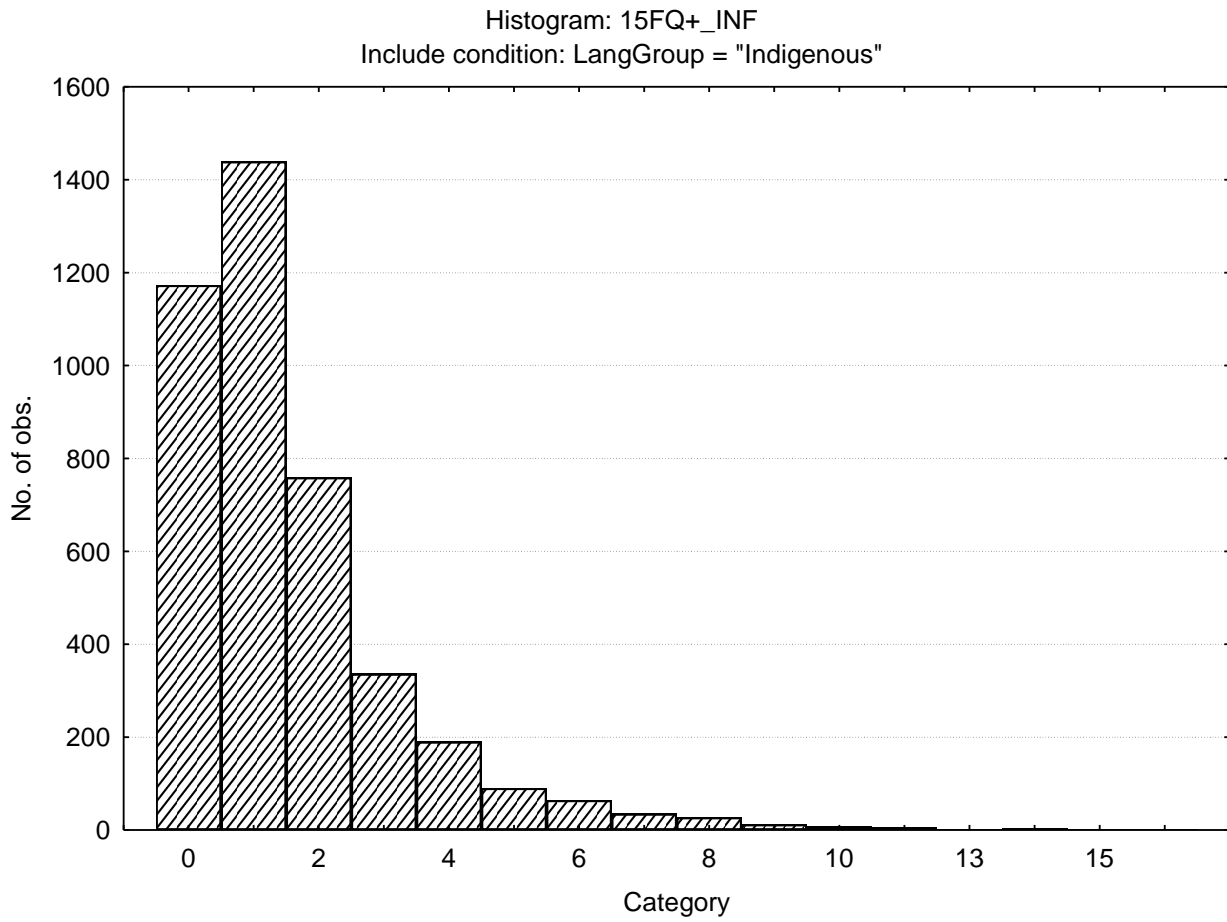
Social desirability



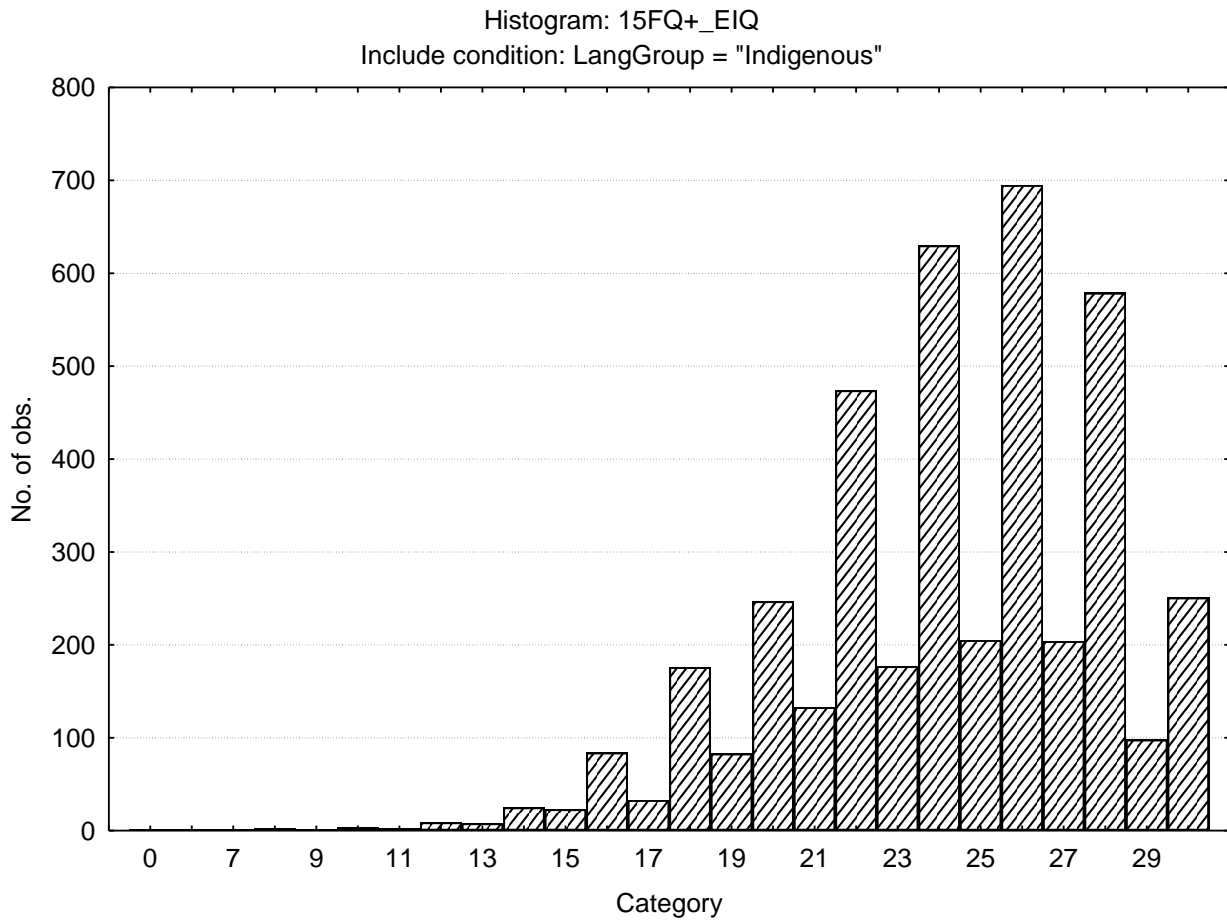
Central Tendency



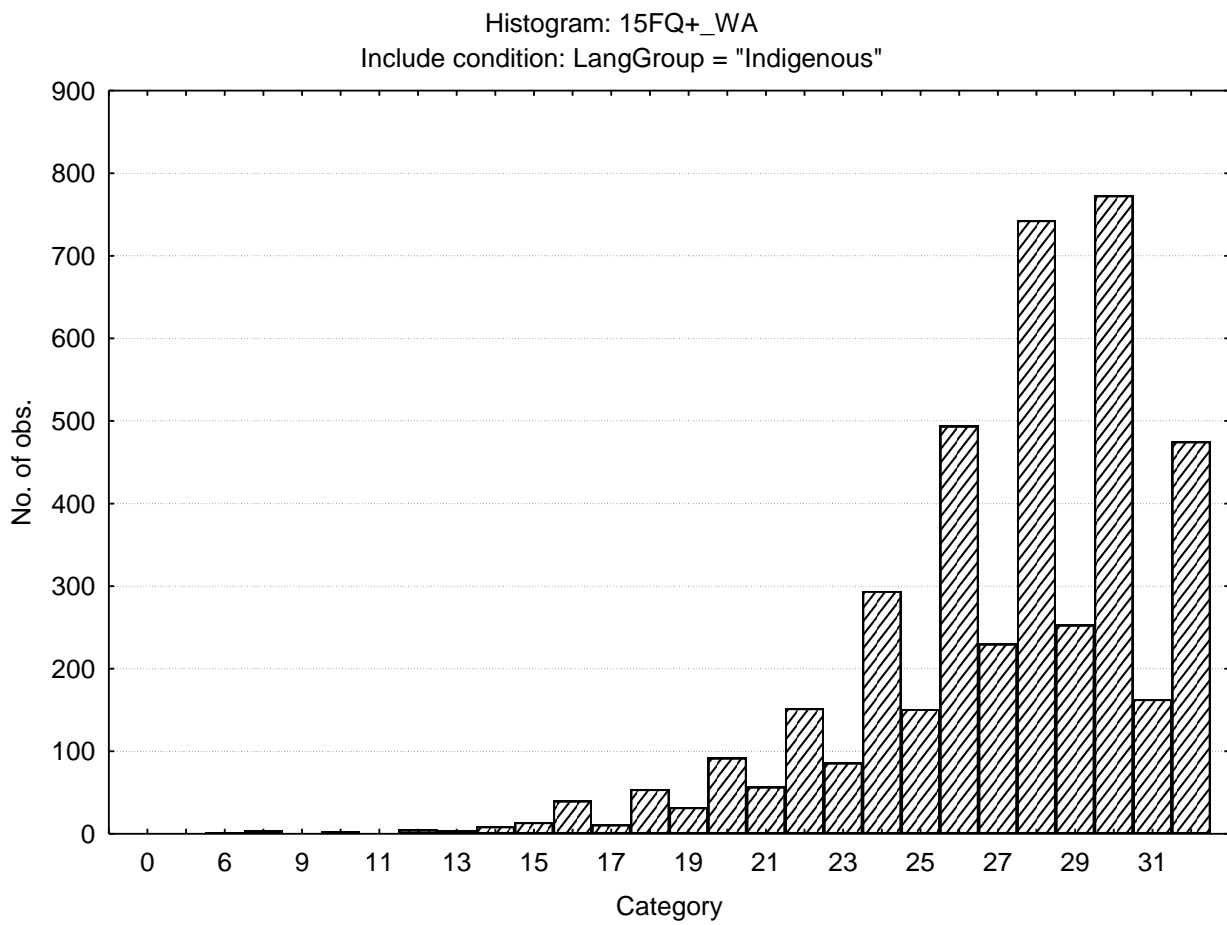
Infrequency



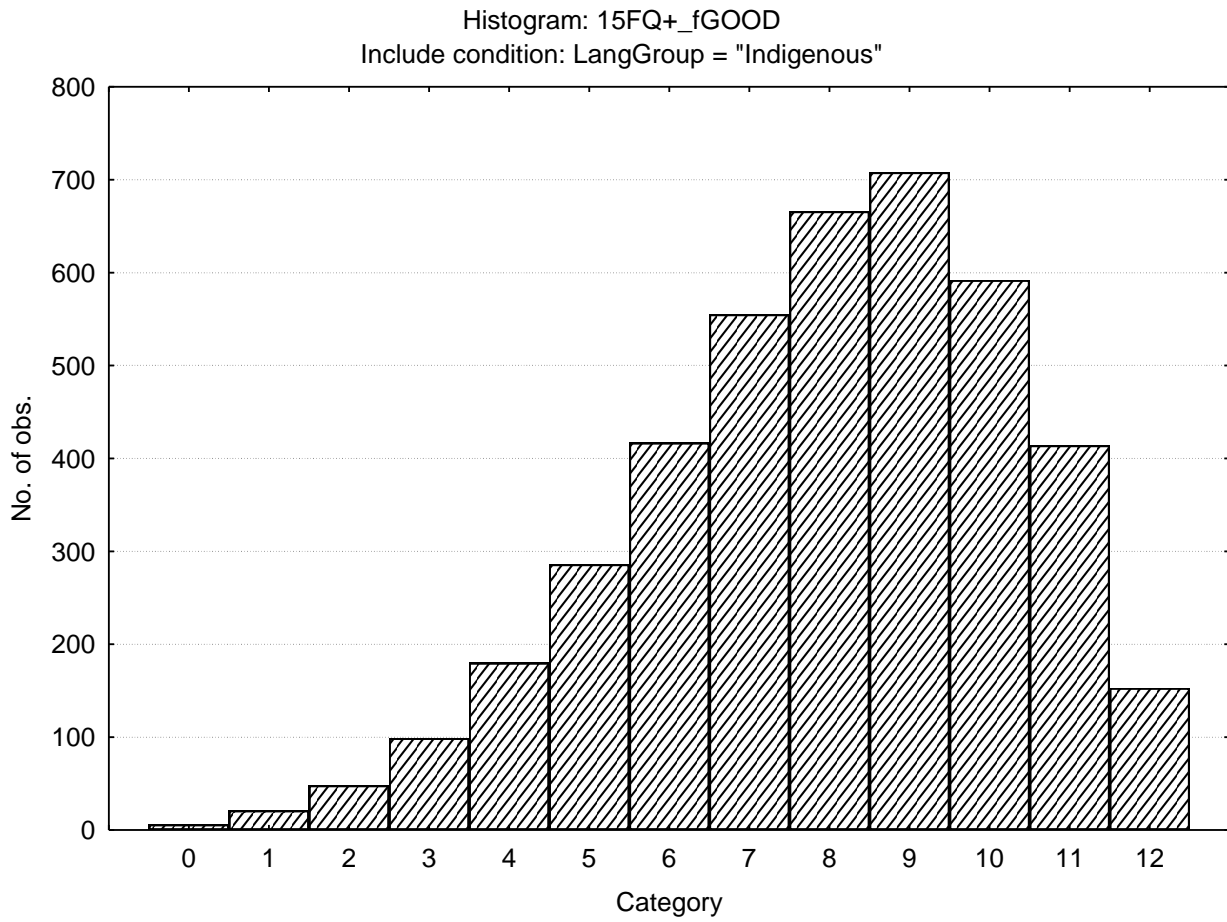
Derived score: Emotional Intelligence



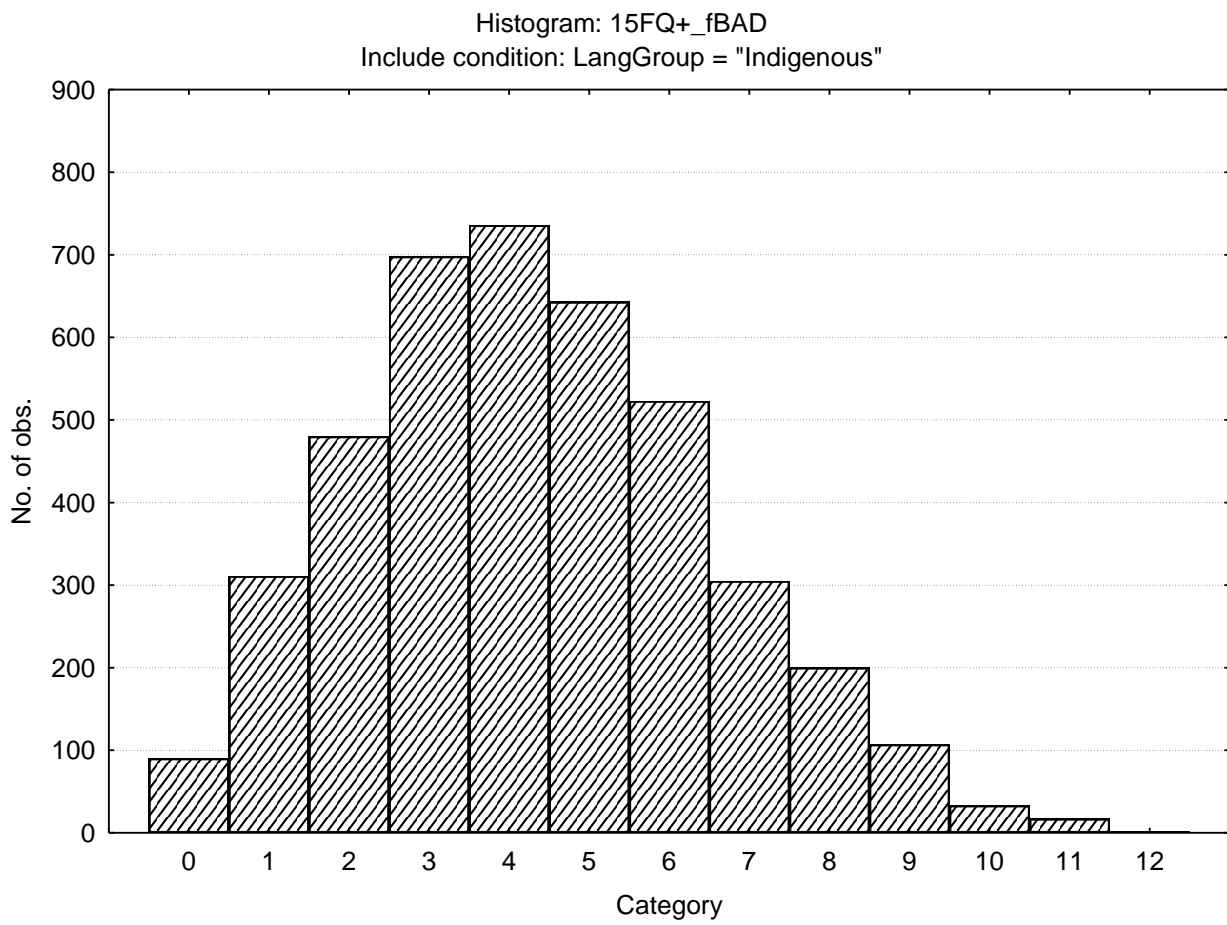
Derived score: Work attitude



Faking good



Faking bad



Sten table

	S10_1	S10_2	S10_3	S10_4	S10_5	S10_6	S10_7	S10_8	S10_9	S10_10
15FQ+_fA	0-12	13-14	15-15	16-17	18-18	19-20	21-22	23-23	24-24	
15FQ+_B	1-11	12-13	14-15	16-17	18-19	20-21	22-22	23-24		
15FQ+_fC	1-8	9-10	11-13	14-15	16-17	18-19	20-21	22-24		
15FQ+_fE	1-8	9-10	11-12	13-14	15-16	17-18	19-20	21-22	23-24	
15FQ+_fF	0-3	4-6	7-9	10-11	12-14	15-16	17-19	20-22	23-24	
15FQ+_fG	0-12	13-14	15-16	17-18	19-20	21-21	22-23	24-24		
15FQ+_fH	0-6	7-8	9-11	12-13	14-16	17-19	20-21	22-24		
15FQ+_fI	0-5	6-7	8-9	10-12	13-14	15-16	17-19	20-21	22-23	24-24
15FQ+_fL	0-1	2-3	4-6	7-8	9-10	11-12	13-15	16-17	18-19	20-24
15FQ+_fM	0-3	4-5	6-7	8-8	9-10	11-11	12-13	14-15	16-16	17-24
15FQ+_fN	1-14	15-15	16-17	18-18	19-20	21-21	22-23	24-24		
15FQ+_fO	0-2	3-4	5-7	8-9	10-11	12-14	15-16	17-19	20-21	22-24
15FQ+_fQ1	0-0	1-2	3-4	5-6	7-9	10-11	12-13	14-15	16-17	18-24
15FQ+_fQ2	0--1	0-0	1-2	3-4	5-6	7-9	10-11	12-13	14-15	16-24
15FQ+_fQ3	0-14	15-16	17-17	18-18	19-20	21-21	22-23	24-24		
15FQ+_fQ4	0--1	0-1	2-3	4-5	6-7	8-9	10-12	13-14	15-16	17-24
15FQ+_SD	0-5	6-6	7-8	9-10	11-11	12-13	14-15	16-16		
15FQ+_CT	0--1	0-0	1-1	2-4	5-11	12-18	19-25	26-31	32-38	39-128
15FQ+_INF	0--1	0-0	1-1	2-2	3-3	4-4	5-5	6-6	7-7	8-16
15FQ+_EIQ	0-16	17-18	19-20	21-22	23-24	25-26	27-27	28-29	30-30	
15FQ+_WA	0-19	20-21	22-23	24-25	26-27	28-29	30-31	32-32		
15FQ+_fGOOD	0-3	4-4	5-5	6-6	7-7	8-9	10-10	11-11	12-12	
15FQ+_fBAD	0--1	0-1	2-2	3-3	4-4	5-5	6-6	7-7	8-8	9-12