

Values and Motives Inventory (VMI)

Norm Group: SA Afrikaans Speakers, Updated 2016

Norm Type:

Standard deviation norm

Sample Composition

The sample consisted of 295 Afrikaans speaking South Africans tested by Psytech SA and collaborators, via GeneSys for Windows, in the period up to November 2013.

Biographical Composition

Category	Frequency table: Sex			
	Count	Cumulative Count	Percent	Cumulative Percent
M	204	204	69,15254	69,1525
F	91	295	30,84746	100,0000
Missing	0	295	0,00000	100,0000

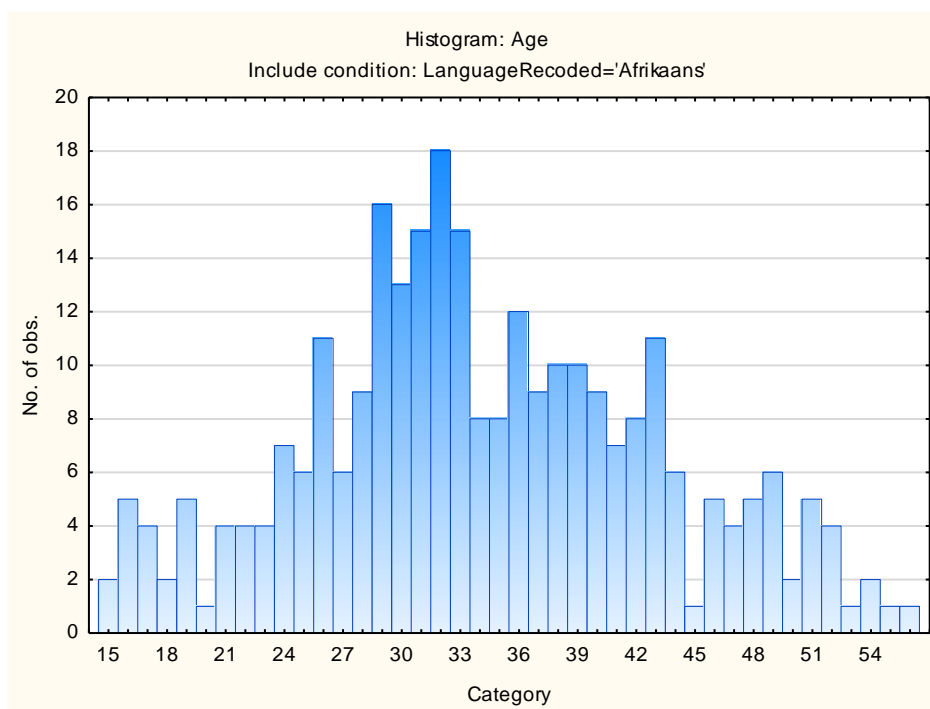
Category	Frequency table: Education			
	Count	Cumulative Count	Percent	Cumulative Percent
Grade 12	116	116	39,32203	39,3220
Tertiary	41	157	13,89831	53,2203
Tertiary Certificate/Trade	45	202	15,25424	68,4746
Post Graduate	43	245	14,57627	83,0508
< Matric	23	268	7,79661	90,8475
Missing	27	295	9,15254	100,0000

Category	Frequency table: Language			
	Count	Cumulative Count	Percent	Cumulative Percent
Afrikaans	295	295	100,0000	100,0000
Missing	0	295	0,0000	100,0000

Category	Frequency table: Language Group			
	Count	Cumulative Count	Percent	Cumulative Percent
Afrikaans	295	295	100,0000	100,0000
Missing	0	295	0,0000	100,0000

Category	Frequency table: Race			
	Count	Cumulative Count	Percent	Cumulative Percent
Coloured	31	31	10,50847	10,5085
European	250	281	84,74576	95,2542
African	7	288	2,37288	97,6271
Missing	7	295	2,37288	100,0000

Variable	Descriptive Statistics: Age					
	Mean	Std.Dev	Minimum	Maximum	N	No.cases Missing
Age	34,21631	9,096909	15,00000	64,00000	282	13

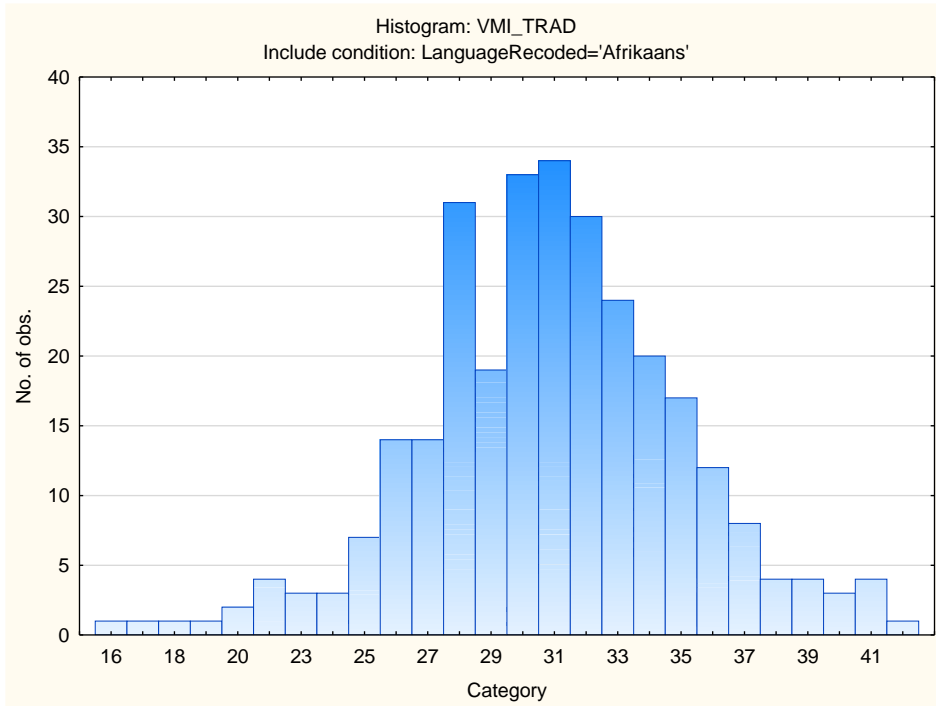


Descriptive statistics on 15FQ+ scales

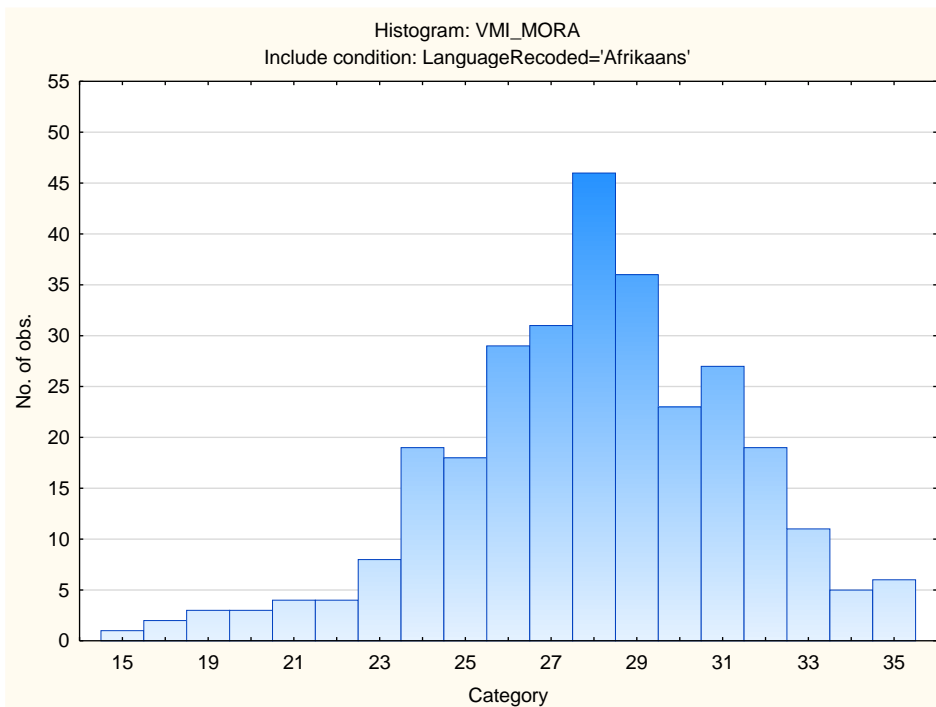
Scale	Scale description	Sample size	Mean	Std.Dev.
TRAD	Traditional	295	30,87458	4,21786
MORA	Moral	295	27,90169	3,38973
INDE	Independence	295	16,85763	3,36348
ETHI	Ethical	295	23,47119	3,92857
ALTR	Altruism	295	43,71186	6,50445
AFFI	Affiliation	295	35,32542	5,77255
AFFE	Affection	295	33,18644	5,57288
NACH	Achievement	295	27,74576	3,55230
FINS	Financial	295	41,01017	6,68915
SAFE	Security	295	15,71864	4,91480
AEST	Aesthetic	295	36,61356	8,03308
INFR	Infrequency	295	0,42373	0,68520
SOCD	Social Desirability	295	24,15254	4,57073
CENT	Central Tendency	295	99,62034	28,62504
AQUI	Acquiescence	295	59,95932	9,37530

Frequency Distributions for VMI Scales

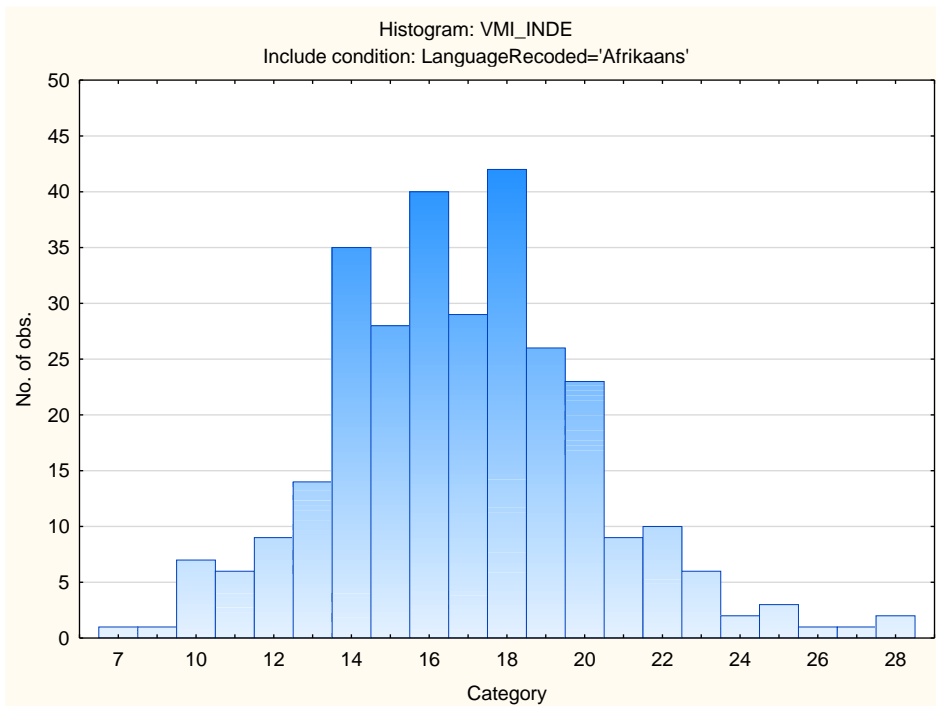
Traditional



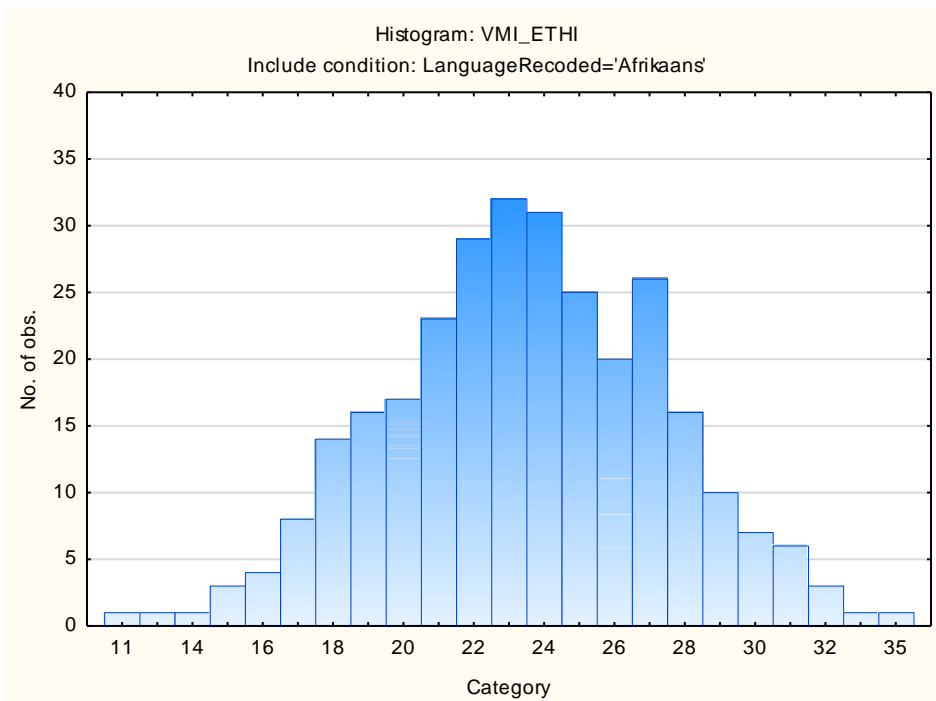
Moral



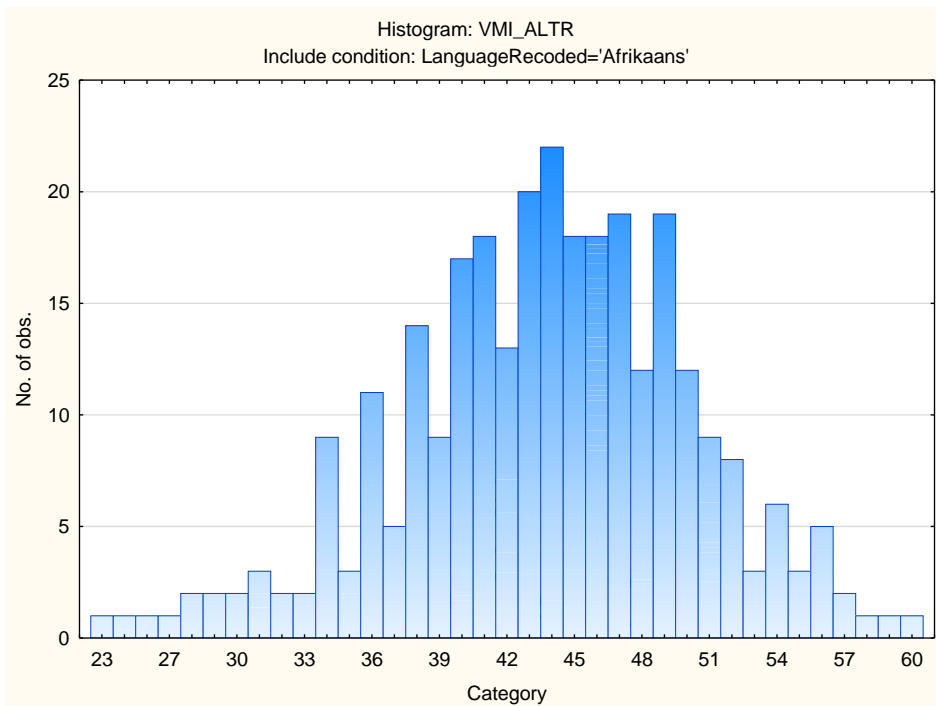
Independence



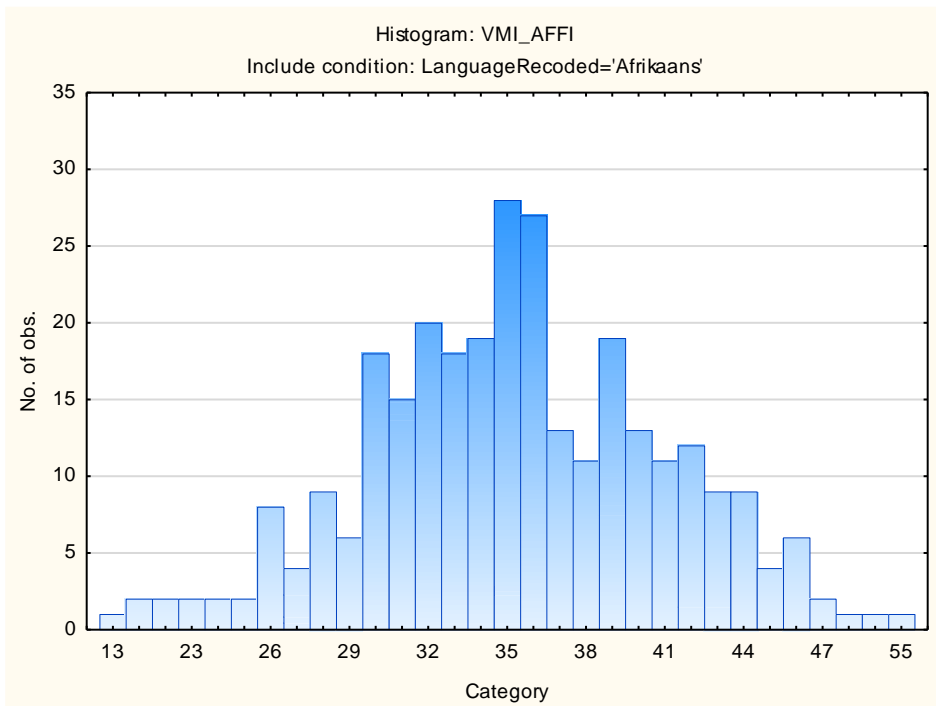
Ethical



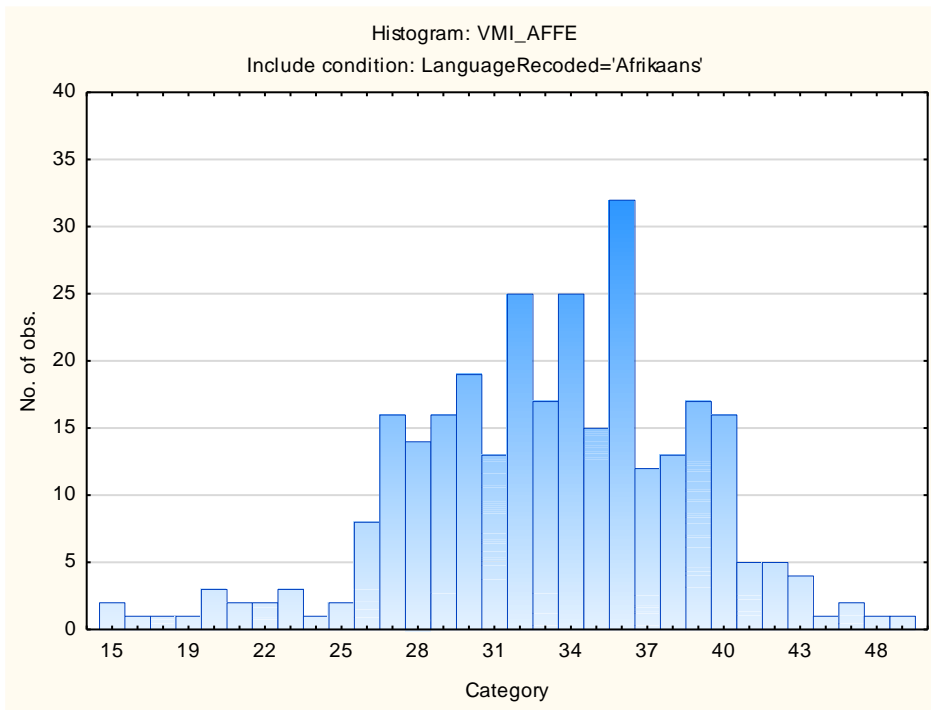
Altruism



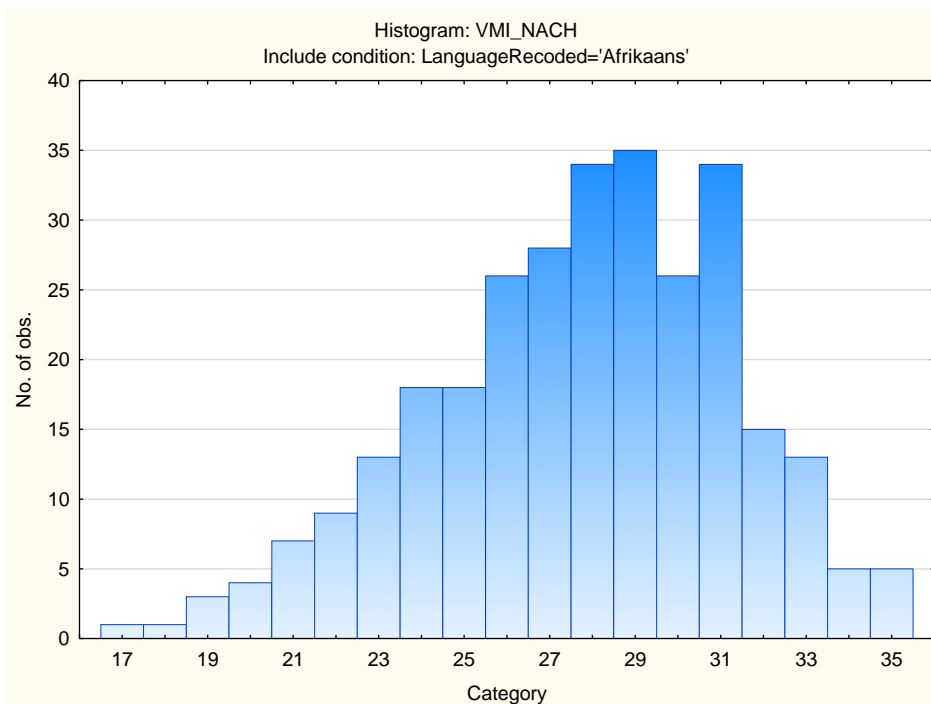
Affiliation



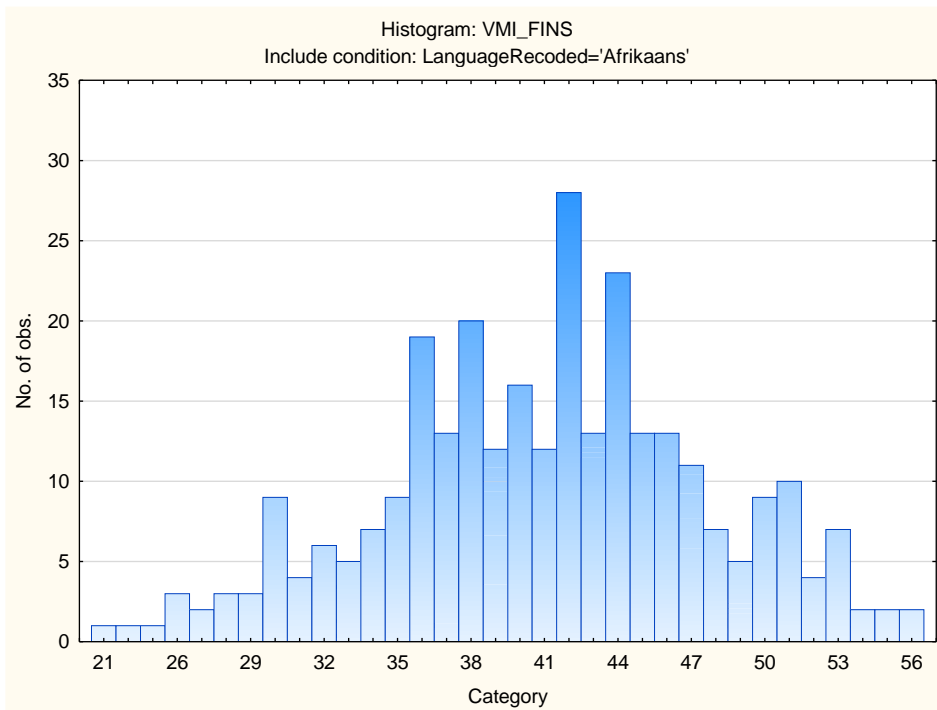
Affection



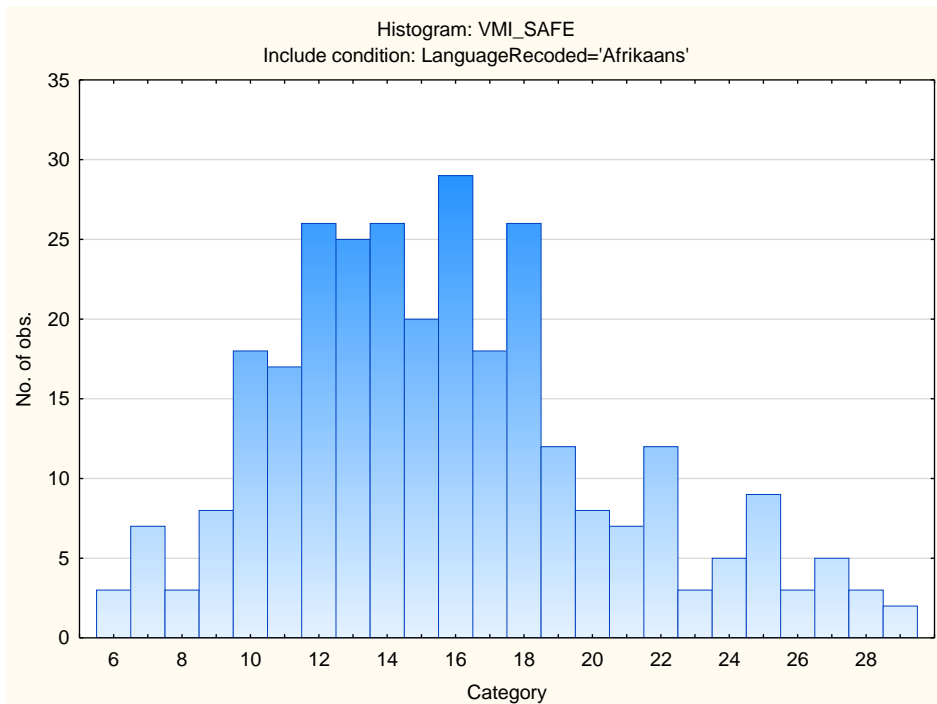
Achievement



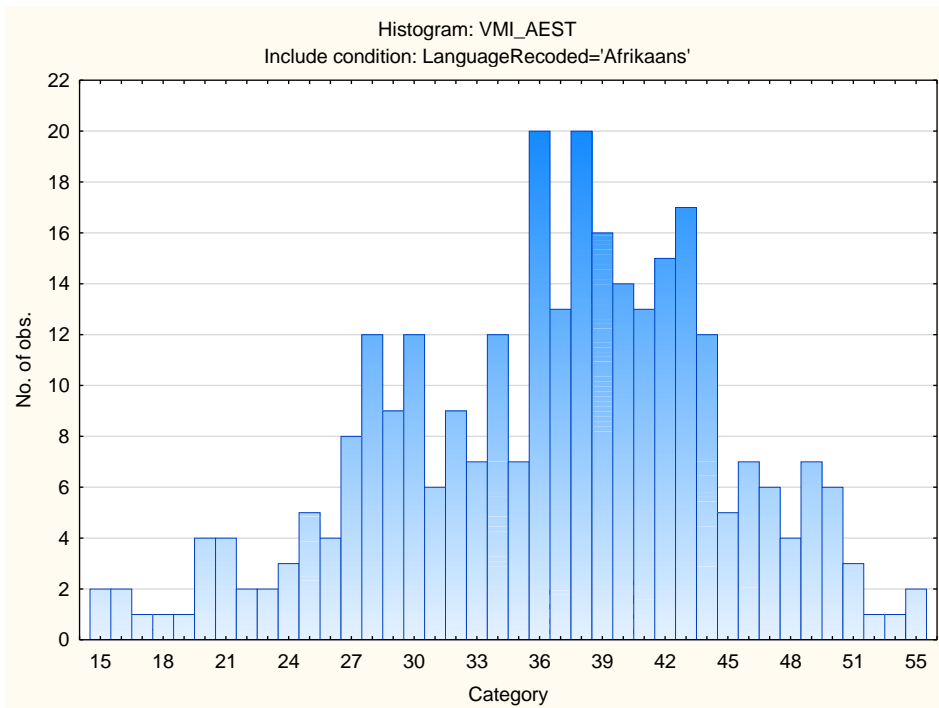
Financial



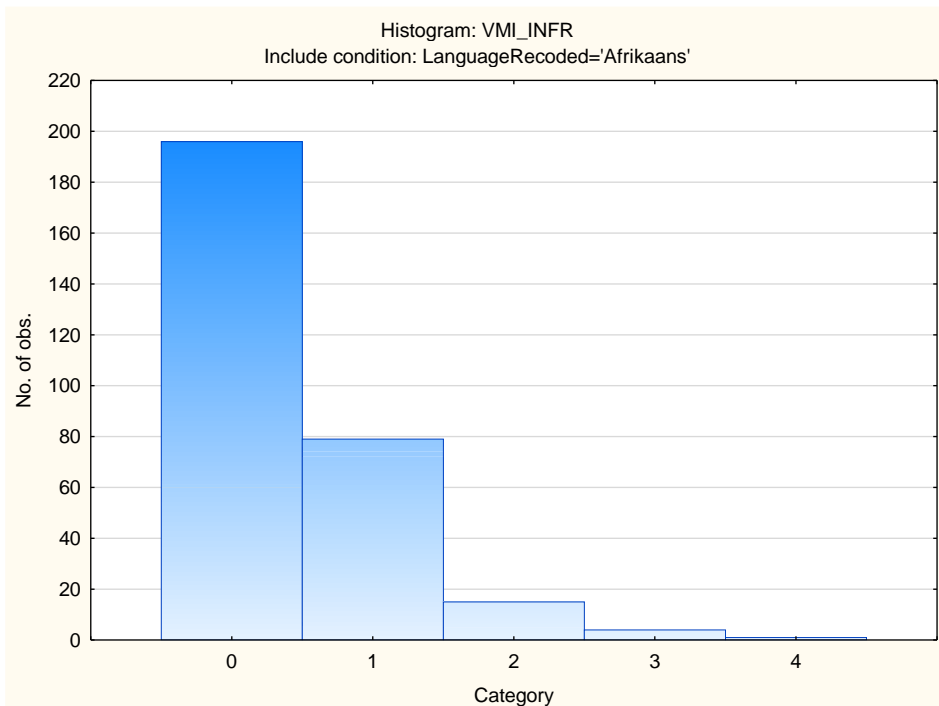
Security



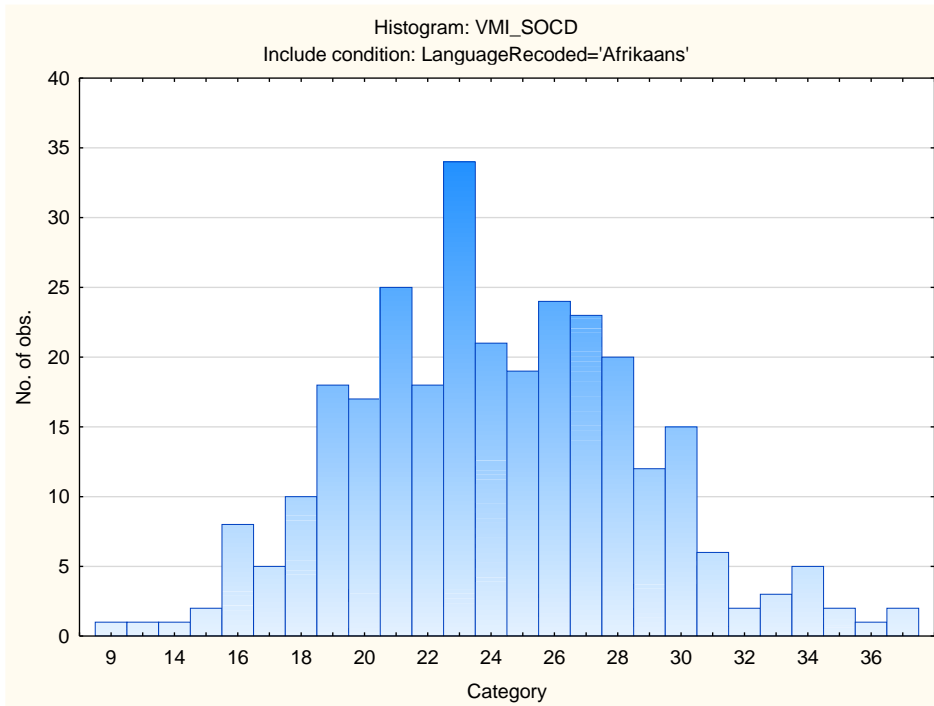
Aesthetic



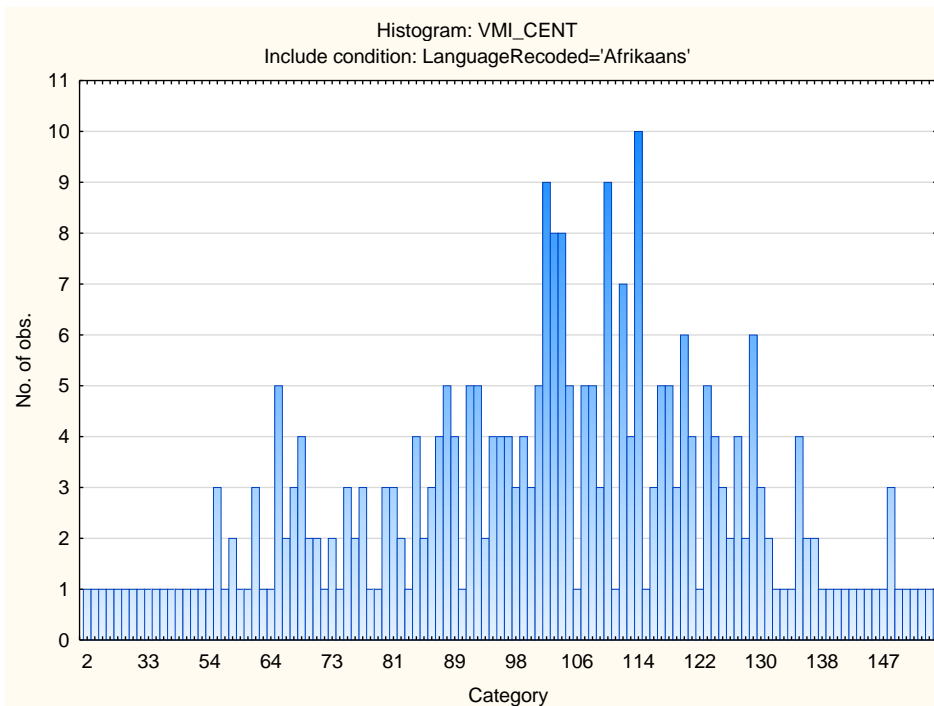
Infrequency



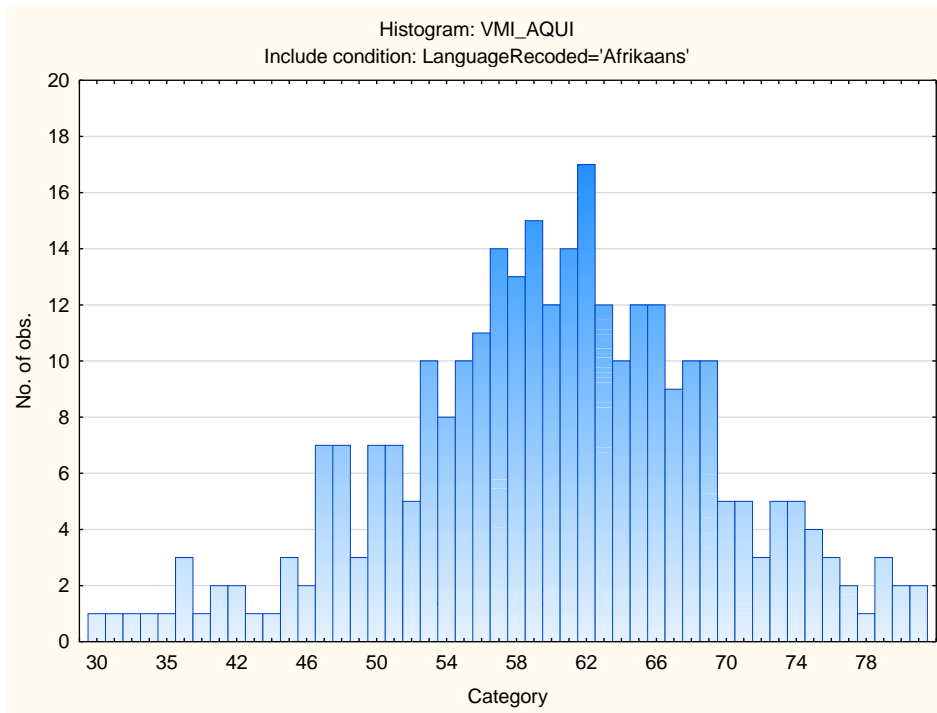
Social Desirability



Central Tendency



Acquiescence



Sten Table

Scale Abbreviation	Scale Name	Raw Scores for Sten Categories									
		1	2	3	4	5	6	7	8	9	10
TRAD	Traditional	16-22	23-24	25-26	27-28	29-30	31-32	33-35	36-37	38-39	40-42
MORA	Moral	15-21	22-22	23-24	25-26	27-27	28-29	30-31	32-32	33-34	35-35
INDE	Independence	7-10	11-11	12-13	14-15	16-16	17-18	19-20	21-21	22-23	24-28
ETHI	Ethical	11-15	16-17	18-19	20-21	22-23	24-25	26-27	28-29	30-31	32-35
ALTR	Altruism	23-30	31-33	34-37	38-40	41-43	44-46	47-50	51-53	54-56	57-60
AFFI	Affiliation	13-23	24-26	27-29	30-32	33-35	36-38	39-41	42-43	44-46	47-55
AFFE	Affection	15-22	23-24	25-27	28-30	31-33	34-35	36-38	39-41	42-44	45-50
NACH	Achievement	17-20	21-22	23-24	25-25	26-27	28-29	30-31	32-33	34-34	35-35
FINS	Financial	21-27	28-30	31-34	35-37	38-41	42-44	45-47	48-51	52-54	55-56
SAFE	Security	6-5	6-8	9-10	11-13	14-15	16-18	19-20	21-23	24-25	26-29
AEST	Aesthetic	15-20	21-24	25-28	29-32	33-36	37-40	41-44	45-48	49-52	53-55
INFR	Infrequency	0-1	0-0	1-1	2-2	3-3	4-4				
SOCD	Social Desirability	9-15	16-17	18-19	20-21	22-24	25-26	27-28	29-31	32-33	34-37
CENT	Central Tendency	2-42	43-56	57-70	71-85	86-99	100-113	114-128	129-142	143-156	157-175
AQUI	Acquiescence	30-41	42-45	46-50	51-55	56-59	60-64	65-69	70-74	75-78	79-82