

Category	Frequency table: Language			
	Count	Cumulative Count	Percent	Cumulative Percent
Setswana	28	28	11.111111	11.11111
isiXhosa	127	155	50.39683	61.5079
Xitsonga	6	161	2.38095	63.8889
isiZulu	42	203	16.66667	80.5556
Sesotho	21	224	8.333333	88.8889
Sepedi	14	238	5.55556	94.4444
isiNdebele	3	241	1.19048	95.6349
Tshivenda	5	246	1.98413	97.6190
siSwati	3	249	1.19048	98.8095
Missing	3	252	1.19048	100.0000

Category	Frequency table: Race Group			
	Count	Cumulative Count	Percent	Cumulative Percent
Coloured	3	3	1.19048	1.1905
European	1	4	0.39683	1.5873
African	248	252	98.41270	100.0000
Missing	0	252	0.00000	100.0000

Variable	Descriptive Statistics: Age					
	Mean	Std.Dev	Minimum	Maximum	N	No.cases Missing
Age	28.68571	7.445100	9.000000	53.00000	245	7

Category	Frequency table: Language			
	Count	Cumulative Count	Percent	Cumulative Percent
Setswana	26	26	10.40000	10.4000
isiXhosa	125	151	50.00000	60.4000
Xitsonga	5	156	2.00000	62.4000
isiZulu	47	203	18.80000	81.2000
Sesotho	20	223	8.00000	89.2000
Sepedi	14	237	5.60000	94.8000
isiNdebele"	3	240	1.20000	96.0000
Tshivenda	4	244	1.60000	97.6000
siSwati	3	247	1.20000	98.8000
Missing	3	250	1.20000	100.0000

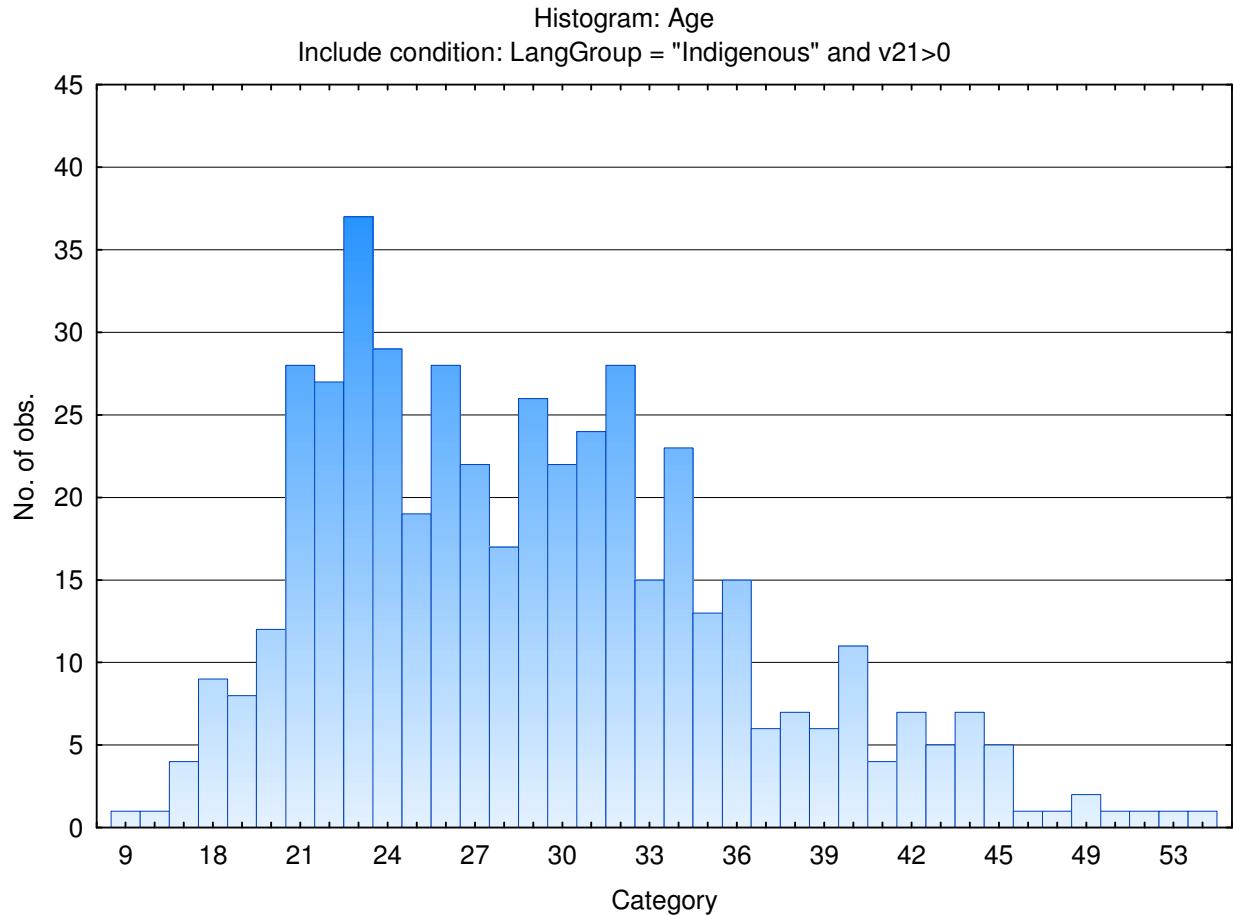
Category	Frequency table: Race Group			
	Count	Cumulative Count	Percent	Cumulative Percent
Coloured	3	3	1.20000	1.2000
European	1	4	0.40000	1.6000
African	246	250	98.40000	100.0000
Missing	0	250	0.00000	100.0000

Variable	Descriptive Statistics: Age					
	Mean	Std.Dev	Minimum	Maximum	N	No.cases Missing
Age	28.52245	7.323085	9.000000	53.00000	245	5

Category	Frequency table: Language			
	Count	Cumulative Count	Percent	Cumulative Percent
Setswana	58	58	12.05821	12.0582
isiXhosa	206	264	42.82744	54.8857
Xitsonga	13	277	2.70270	57.5884
isiZulu	106	383	22.03742	79.6258
Sesotho	50	433	10.39501	90.0208
Sepedi	23	456	4.78170	94.8025
isiNdebele"	3	459	0.62370	95.4262
Tshivenda	6	465	1.24740	96.6736
siSwati	8	473	1.66320	98.3368
Missing	8	481	1.66320	100.0000

Category	Frequency table: Race Group			
	Count	Cumulative Count	Percent	Cumulative Percent
Coloured	3	3	0.62370	0.6237
European	1	4	0.20790	0.8316
African	475	479	98.75260	99.5842
Missing	2	481	0.41580	100.0000

Variable	Descriptive Statistics					
	Mean	Std.Dev	Minimum	Maximum	N	No.cases Missing
Age	29.00000	7.194078	9.000000	55.00000	474	7

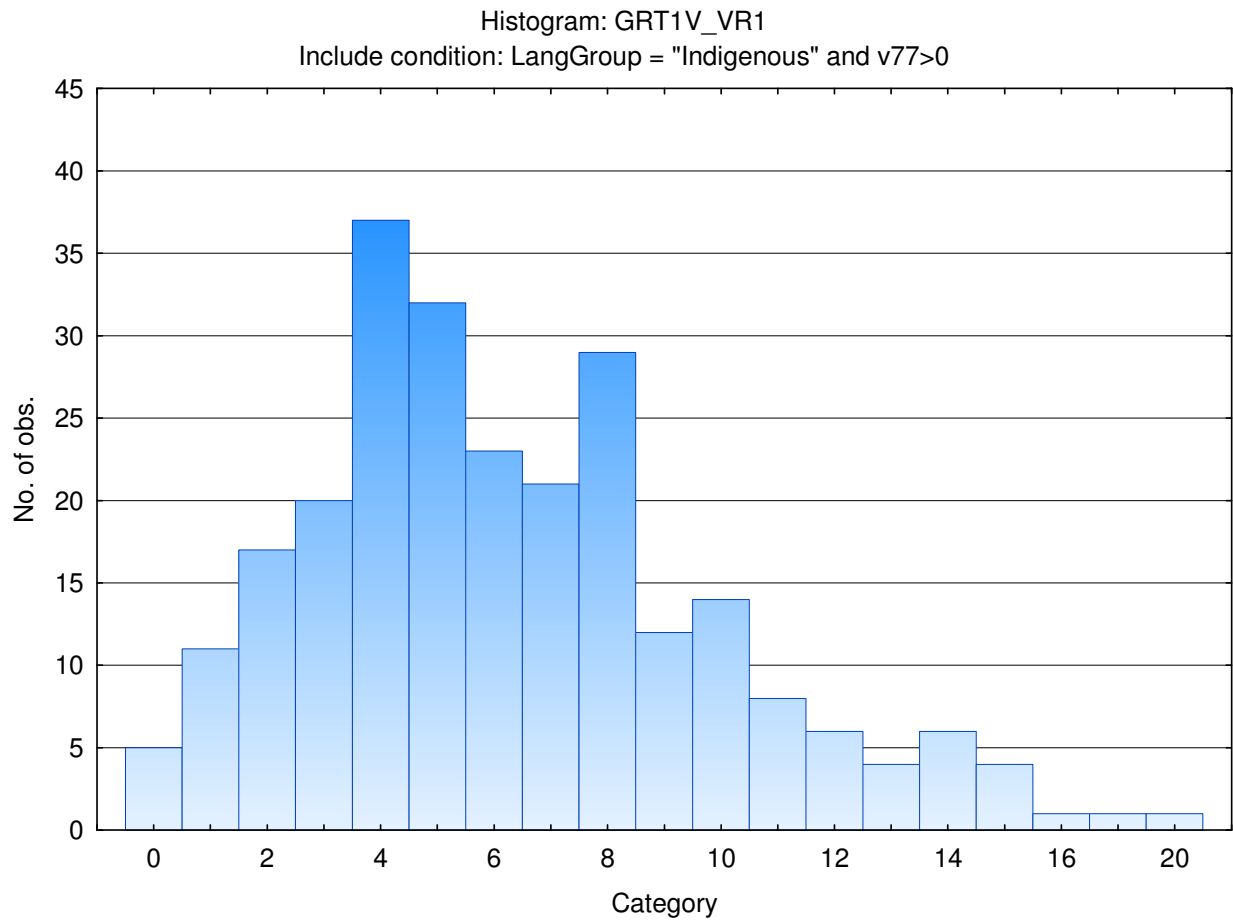


Descriptive statistics on Graduate Reasoning Test Battery subtests

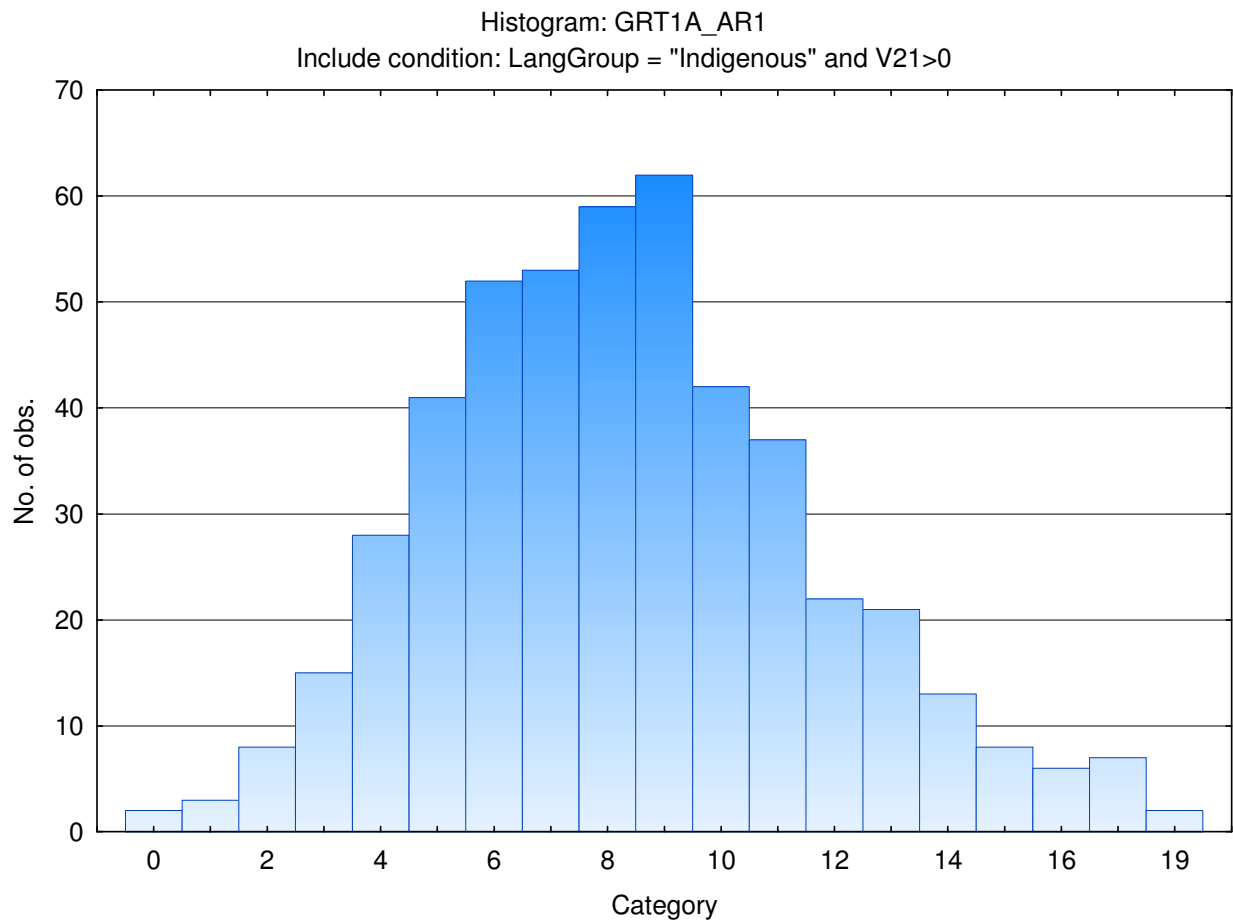
Variable	Descriptive Statistics					
	Mean	Std.Dev	Minimum	Maximum	N	No.cases Missing
Graduate verbal reasoning	6.30556	3.635522	0.000000	20.00000	252	0
Graduate verbal reasoning items attempted	19.13492	5.993826	7.000000	30.00000	252	0
Graduate numerical reasoning	5.72800	3.308444	0.000000	24.00000	250	0
Graduate numerical reasoning items attempted	15.26400	5.396182	2.000000	25.00000	250	0
Graduate abstract reasoning	8.34304	3.370336	0.000000	19.00000	481	0
Graduate abstract reasoning items attempted	19.28690	4.633305	1.000000	25.00000	481	0

Frequency distributions of Graduate Reasoning Test Battery subtests

Graduate verbal reasoning



Graduate Abstract Reasoning



Stanine table

	S9_1	S9_2	S9_3	S9_4	S9_5	S9_6	S9_7	S9_8	S9_9
Graduate Verbal Reasoning	0--1	0-1	2-3	4-5	6-7	8-9	10-10	11-12	13-20
Graduate Verbal Items Attempted	7-8	9-11	12-14	15-17	18-20	21-23	24-26	27-29	30-30
Graduate Numerical Reasoning	0--1	0-1	2-3	4-4	5-6	7-8	9-9	10-11	12-24
Graduate Numerical Items Attempted	2-5	6-8	9-11	12-13	14-16	17-19	20-22	23-24	25-25
Graduate Abstract Reasoning	0-2	3-4	5-5	6-7	8-9	10-10	11-12	13-14	15-19
Graduate Abstract Items Attempted	1-11	12-13	14-15	16-18	19-20	21-22	23-25		