

# Norm group: SA English updated 2010

---

## Norm type

Standard deviation norm

## Composition of the sample

The sample consisted of English speaking South Africans tested by Psytech SA and collaborators in the period up to February 2010.

### Gender composition of the sample

Category	Frequency table: Sex			
	Count	Cumulative Count	Percent	Cumulative Percent
F	2007	2007	39.33751	39.3375
M	3077	5084	60.30968	99.6472
Missing	18	5102	0.35280	100.0000

### Educational composition of the sample

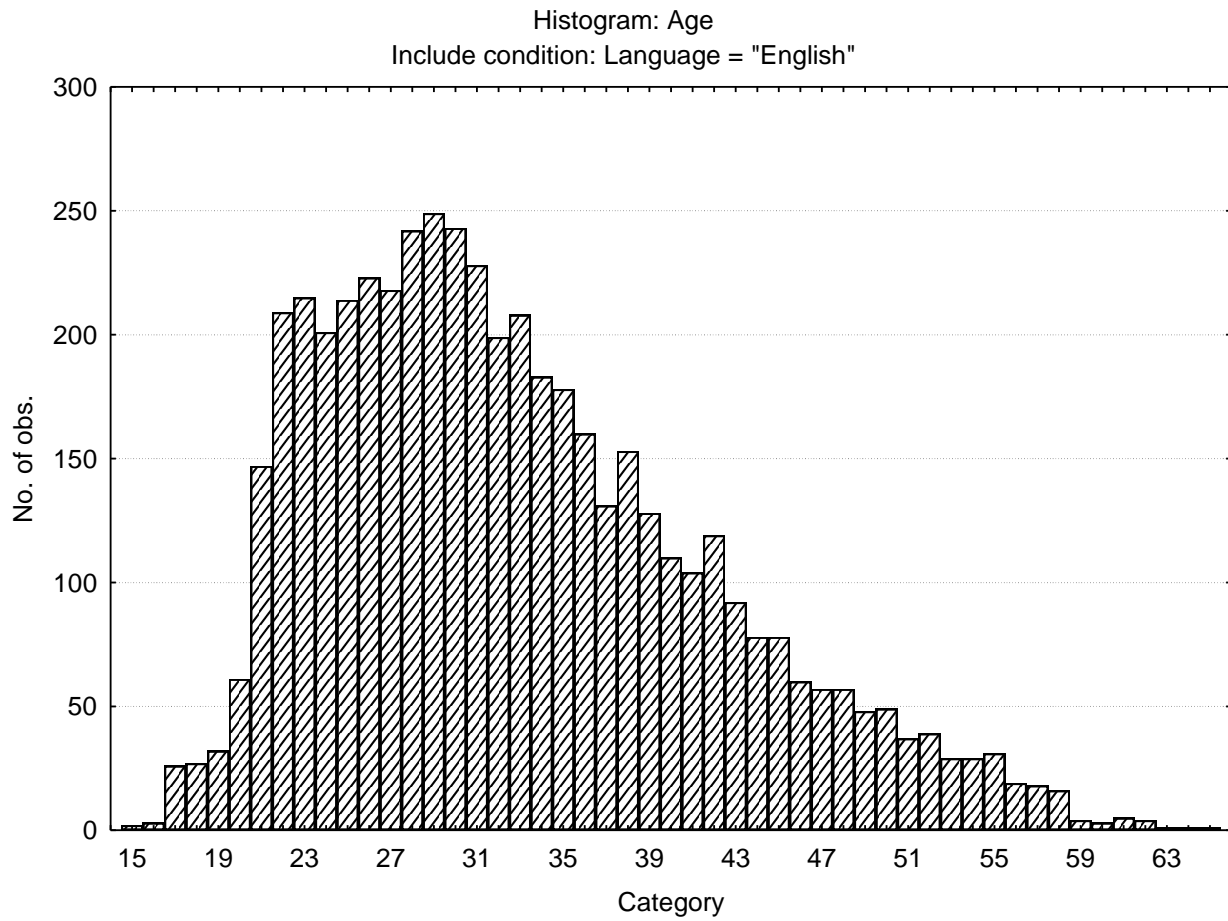
Category	Frequency table: Education			
	Count	Cumulative Count	Percent	Cumulative Percent
Grade 12	1651	1651	32.35986	32.3599
Degree	830	2481	16.26813	48.6280
Post Graduate	768	3249	15.05292	63.6809
Technikon	517	3766	10.13328	73.8142
University diploma	456	4222	8.93767	82.7519
Grade 10 or 11	146	4368	2.86162	85.6135
Vocational Training	162	4530	3.17523	88.7887
Diploma	85	4615	1.66601	90.4547
Certificate	19	4634	0.37240	90.8271
Missing	468	5102	9.17287	100.0000

### Race composition of the sample

Category	Frequency table: RaceGroup			
	Count	Cumulative Count	Percent	Cumulative Percent
African	342	342	6.70325	6.7033
European	2300	2642	45.08036	51.7836
Coloured	745	3387	14.60212	66.3857
Asian	1587	4974	31.10545	97.4912
Missing	128	5102	2.50882	100.0000

**Age composition of the sample**

Variable	Descriptive Statistics : Age					No.cases Missing
	Mean	Std.Dev	Minimum	Maximum	N	
Age	32.84745	8.940359	15.00000	68.00000	4969	133

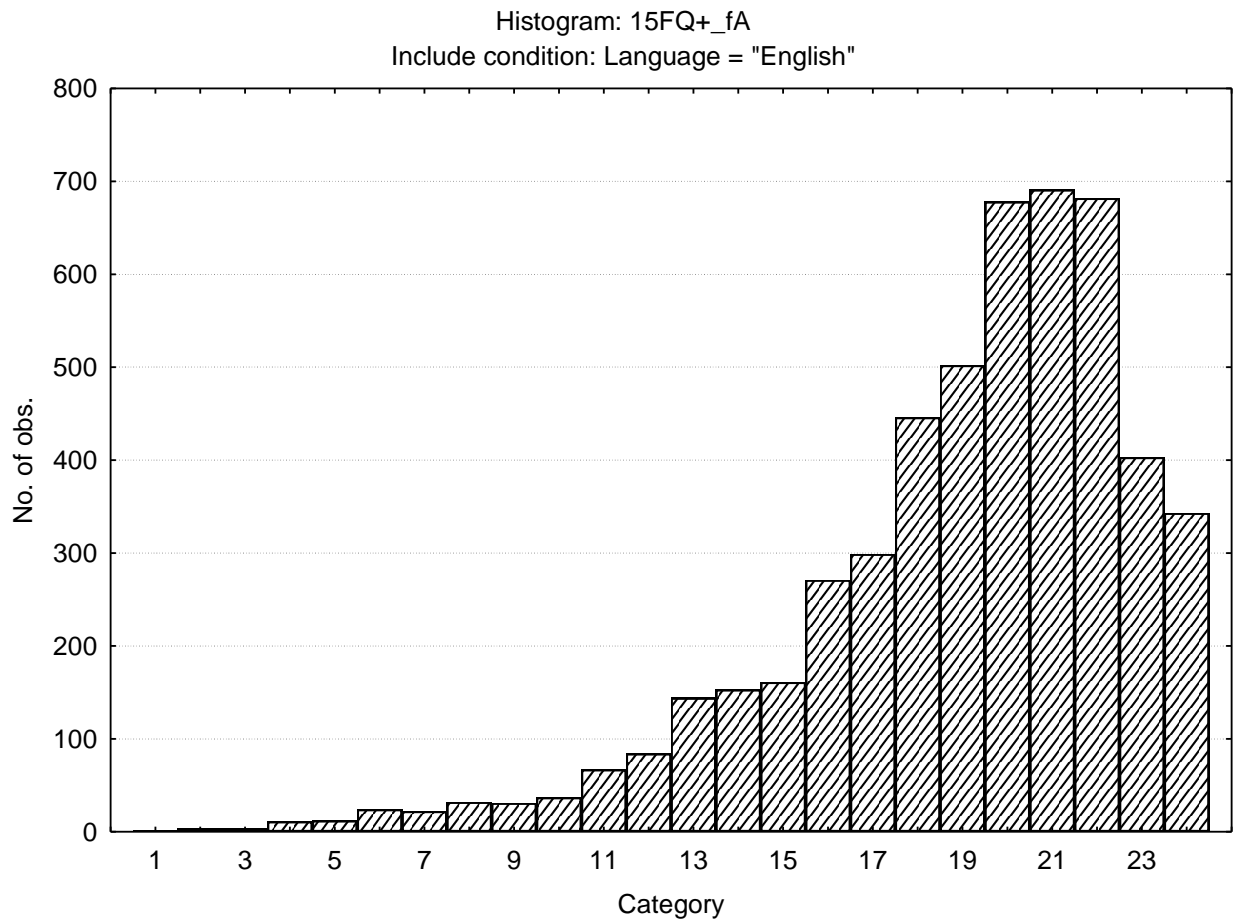


## Descriptive statistics on 15FQPlus scale raw scores

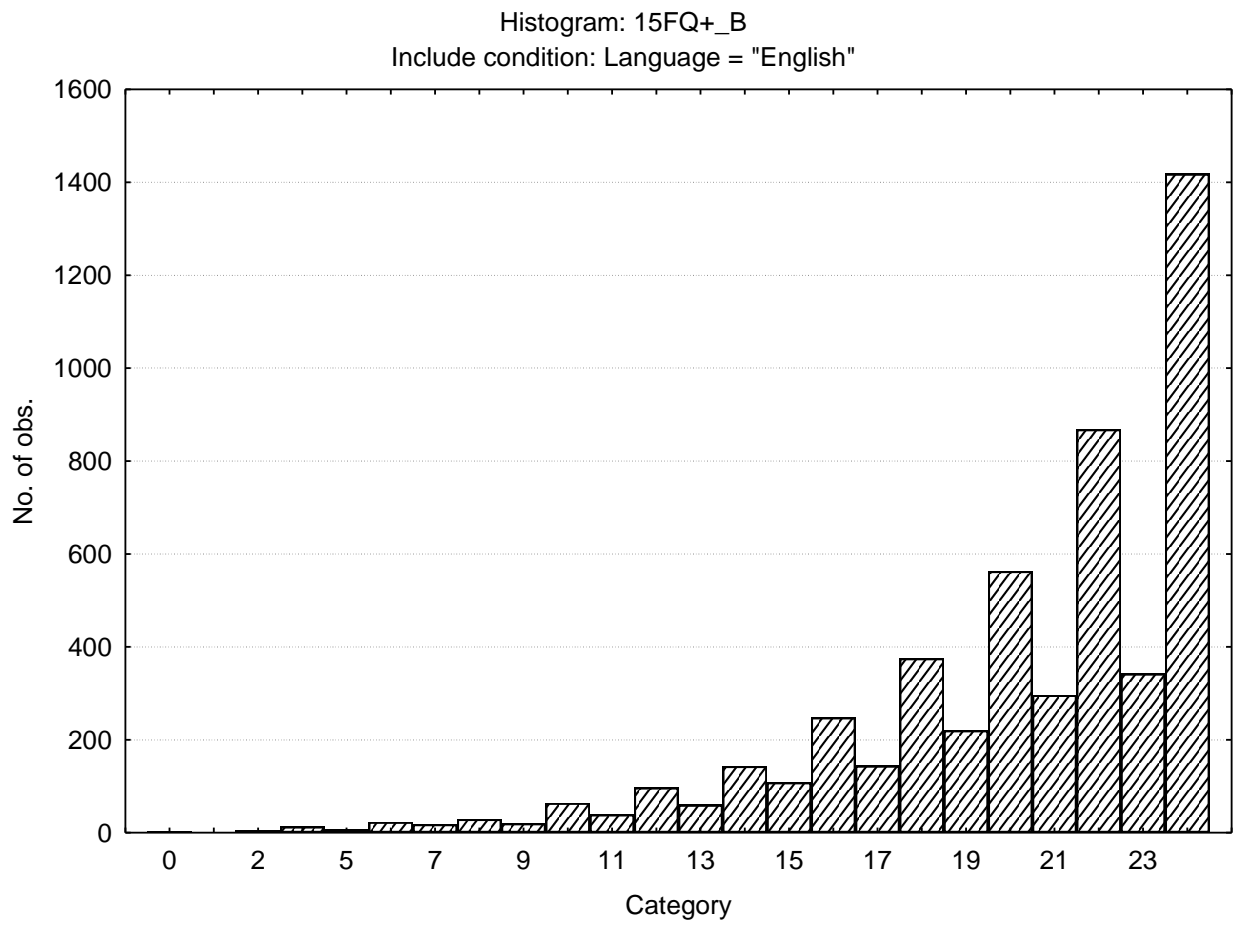
Variable		Descriptive Statistics					
		Mean	Std.Dev	Minimum	Maximum	N	No.cases Missing
15FQ+_fA	Distant aloof - empathic	19.02450	3.78800	1.000000	24.0000	5102	0
15FQ+_B	Intellectance	20.23187	4.06535	0.000000	24.0000	5102	0
15FQ+_fC	Affected by feelings - emotionally stable	17.40768	4.75117	0.000000	24.0000	5102	0
15FQ+_fE	Accommodating - Dominant	16.59624	4.54316	0.000000	24.0000	5102	0
15FQ+_fF	Sober serious - Enthusiastic	15.64406	5.35656	0.000000	24.0000	5102	0
15FQ+_fG	Expedient - Conscientious	19.27323	4.68864	0.000000	24.0000	5102	0
15FQ+_fH	Retiring - Socially bold	15.41690	6.15130	0.000000	24.0000	5102	0
15FQ+_fI	Tough Minded - Tender minded	14.61662	5.24054	0.000000	24.0000	5102	0
15FQ+_fL	Trusting - Suspicious	8.31439	5.01078	0.000000	24.0000	5102	0
15FQ+_fM	Concrete - Abstract	10.48256	4.32692	0.000000	24.0000	5102	0
15FQ+_fN	Direct - Restrained	18.75049	4.58652	0.000000	24.0000	5102	0
15FQ+_fO	Self-assured - Apprehensive	11.91709	5.76090	0.000000	24.0000	5102	0
15FQ+_fQ1	Conventional - Radical	9.00392	5.19145	0.000000	24.0000	5102	0
15FQ+_fQ2	Group - orientated - Self-sufficient	7.58996	4.93435	0.000000	24.0000	5102	0
15FQ+_fQ3	Informal- self disciplined	20.00804	3.43257	2.000000	24.0000	5102	0
15FQ+_fQ4	Composed - tense driven	9.15582	5.95710	0.000000	24.0000	5102	0
15FQ+_SD	Social desirability	11.01627	3.61518	0.000000	16.0000	5102	0
15FQ+_CT	Central Tendency	11.70423	12.88476	0.000000	112.0000	5102	0
15FQ+_INF	Infrequency	1.20835	1.43113	0.000000	13.0000	5102	0
15FQ+_EIQ	Derived score: Emotional Intelligence	23.77068	4.69267	0.000000	30.0000	5102	0
15FQ+_WA	Derived score: Work attitude	27.18679	4.47474	0.000000	32.0000	5102	0
15FQ+_fGOOD	Faking good	7.38201	2.70979	0.000000	12.0000	5102	0
15FQ+_fBAD	Faking bad	4.40749	2.51511	0.000000	13.0000	5102	0

## Frequency distributions on 15FQPlus scale raw scores

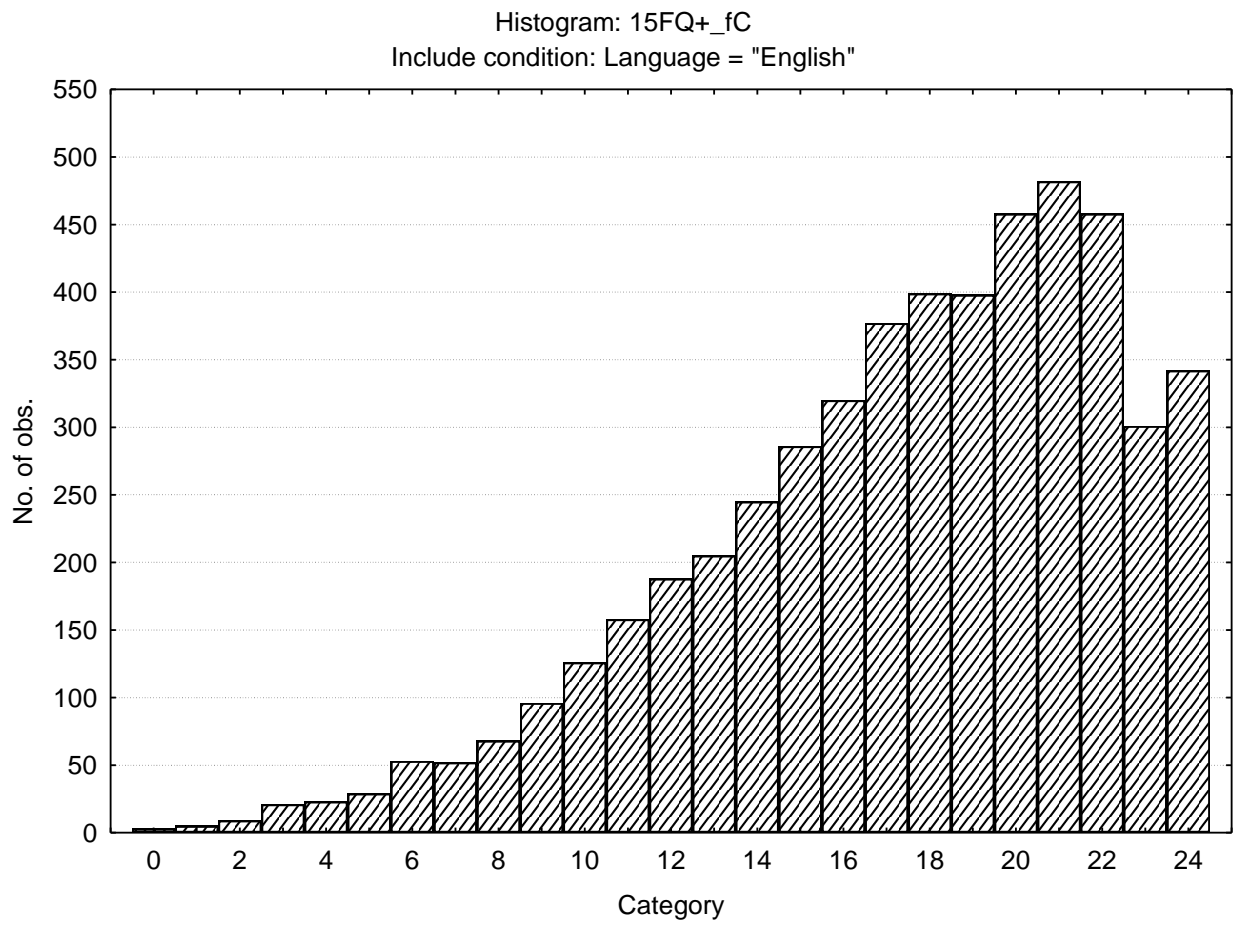
### Distant aloof-empathic



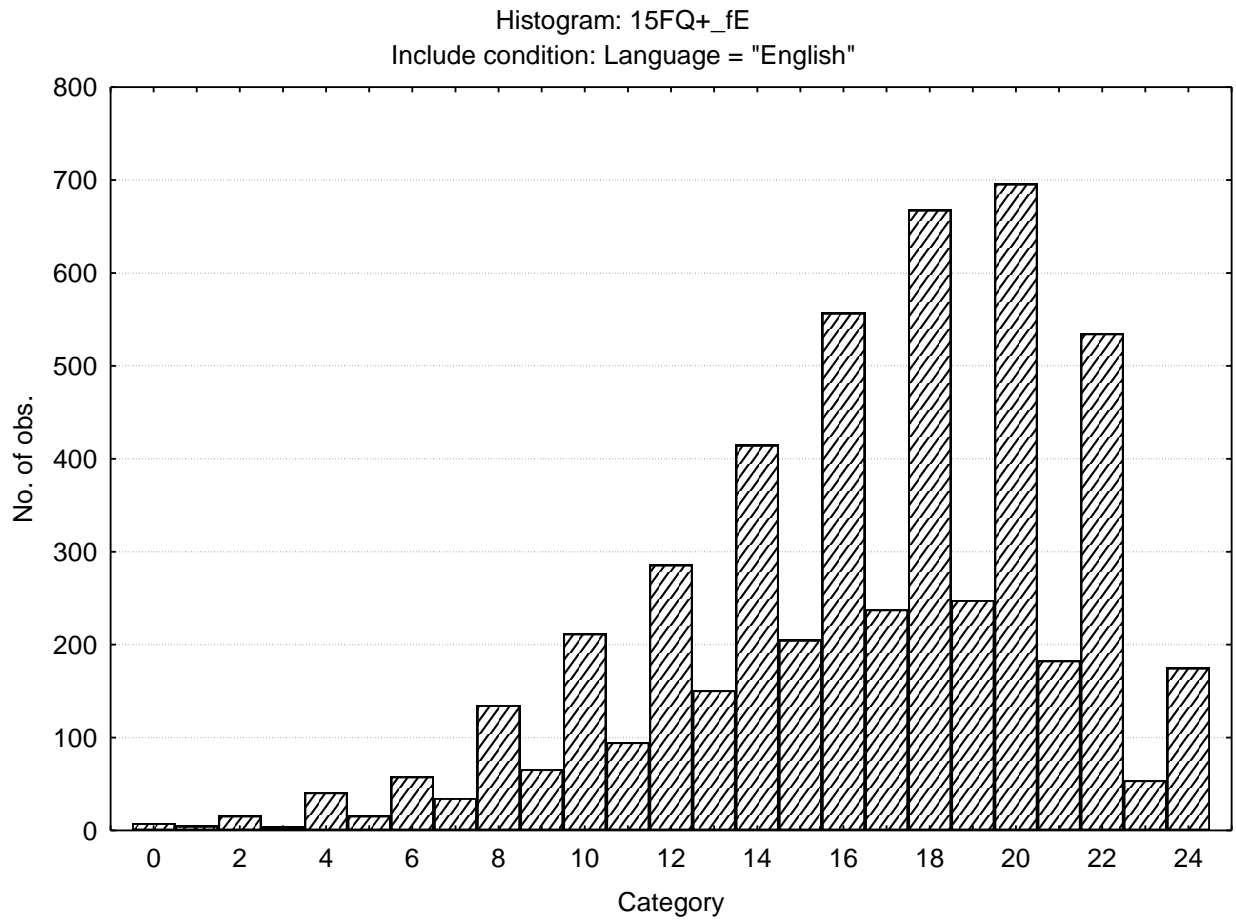
## Intellectance



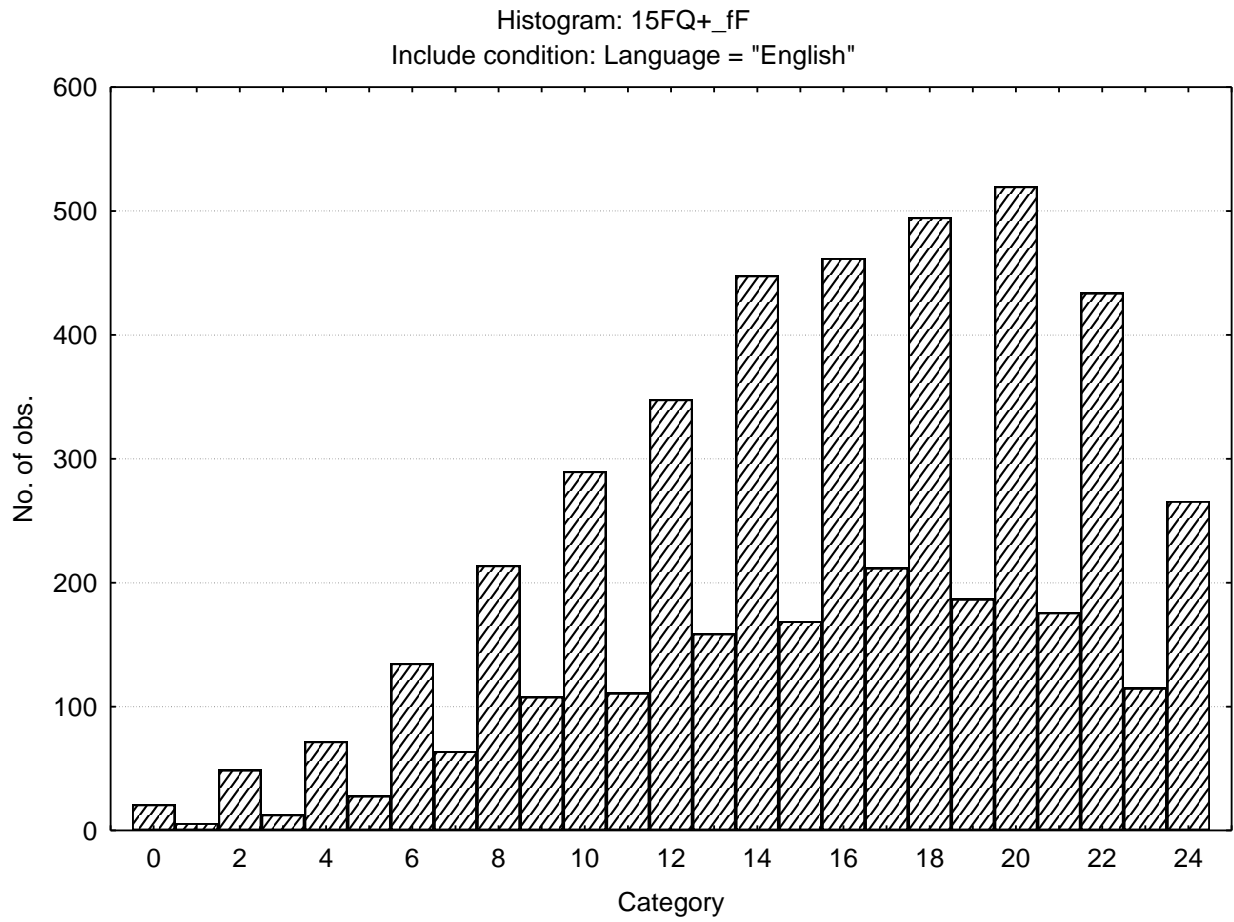
**Affected by feelings - Emotionally stable**



Accommodating - dominant

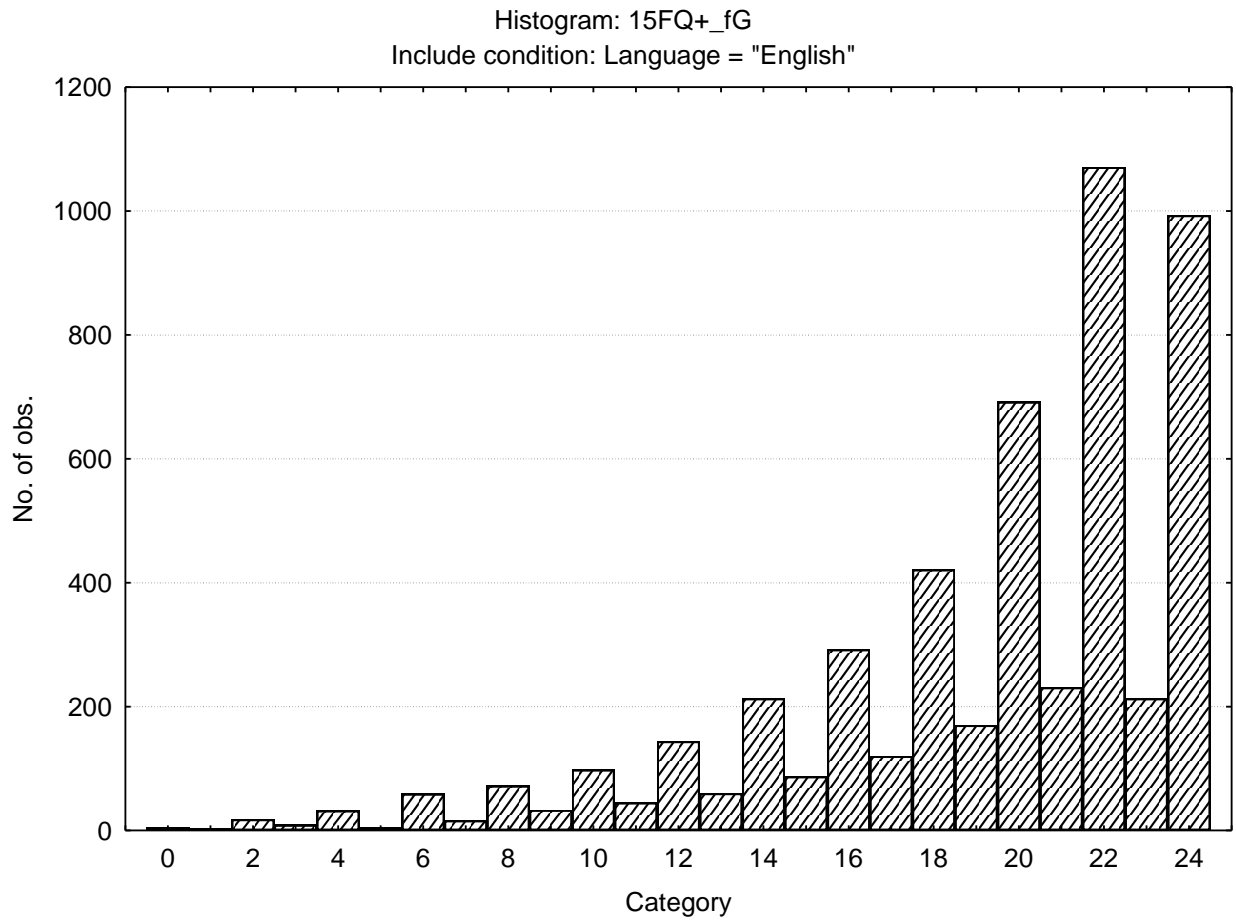


Sober serious - enthusiastic

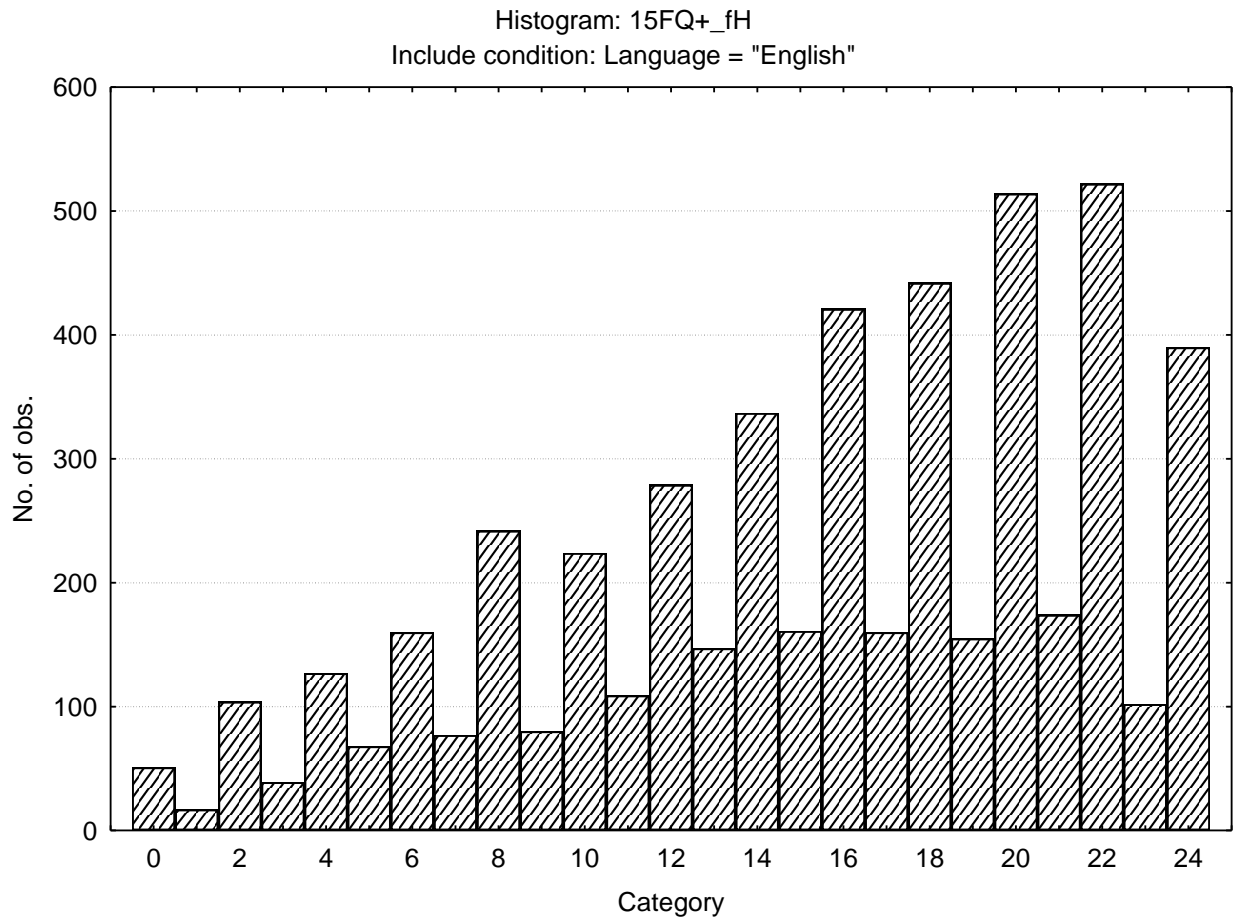




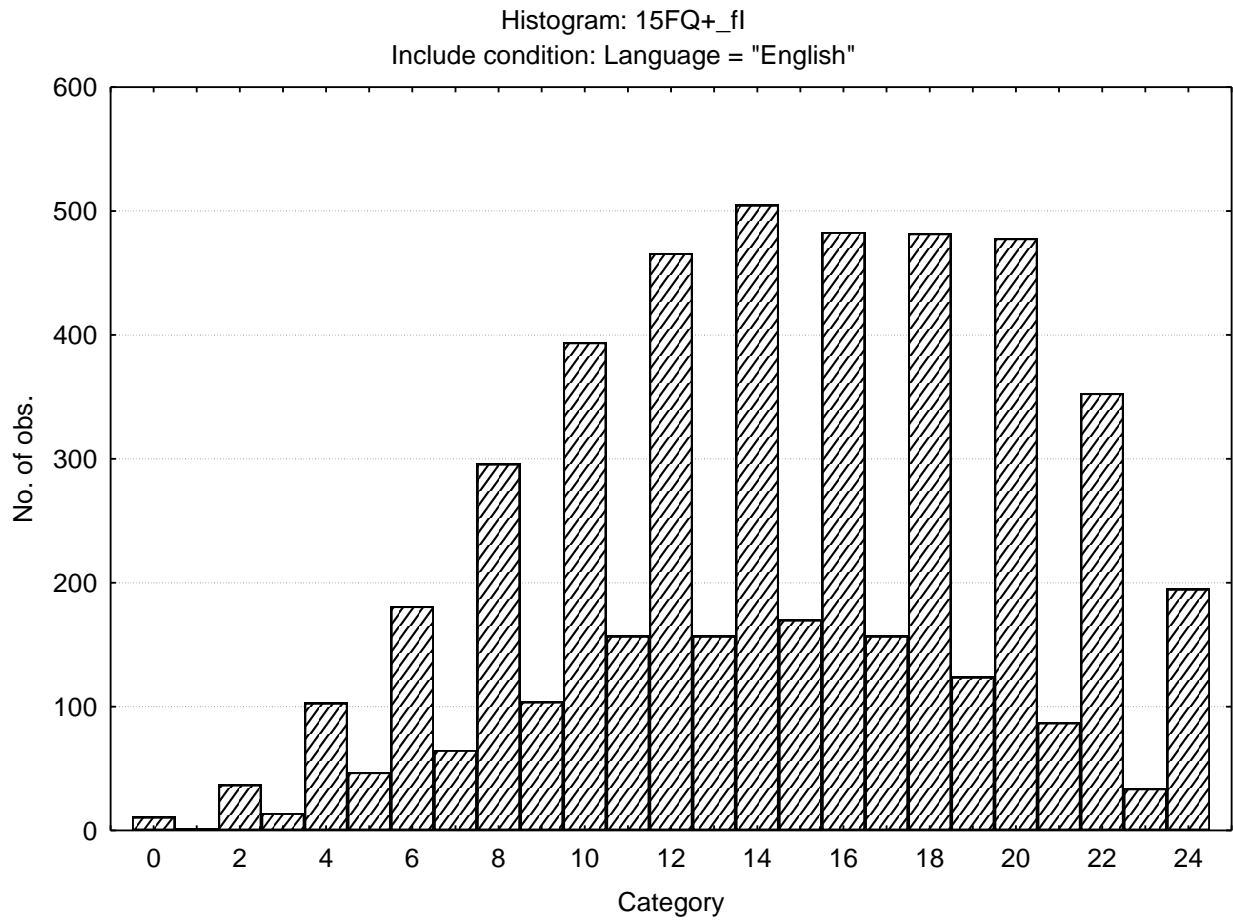
Expedient-conscientious



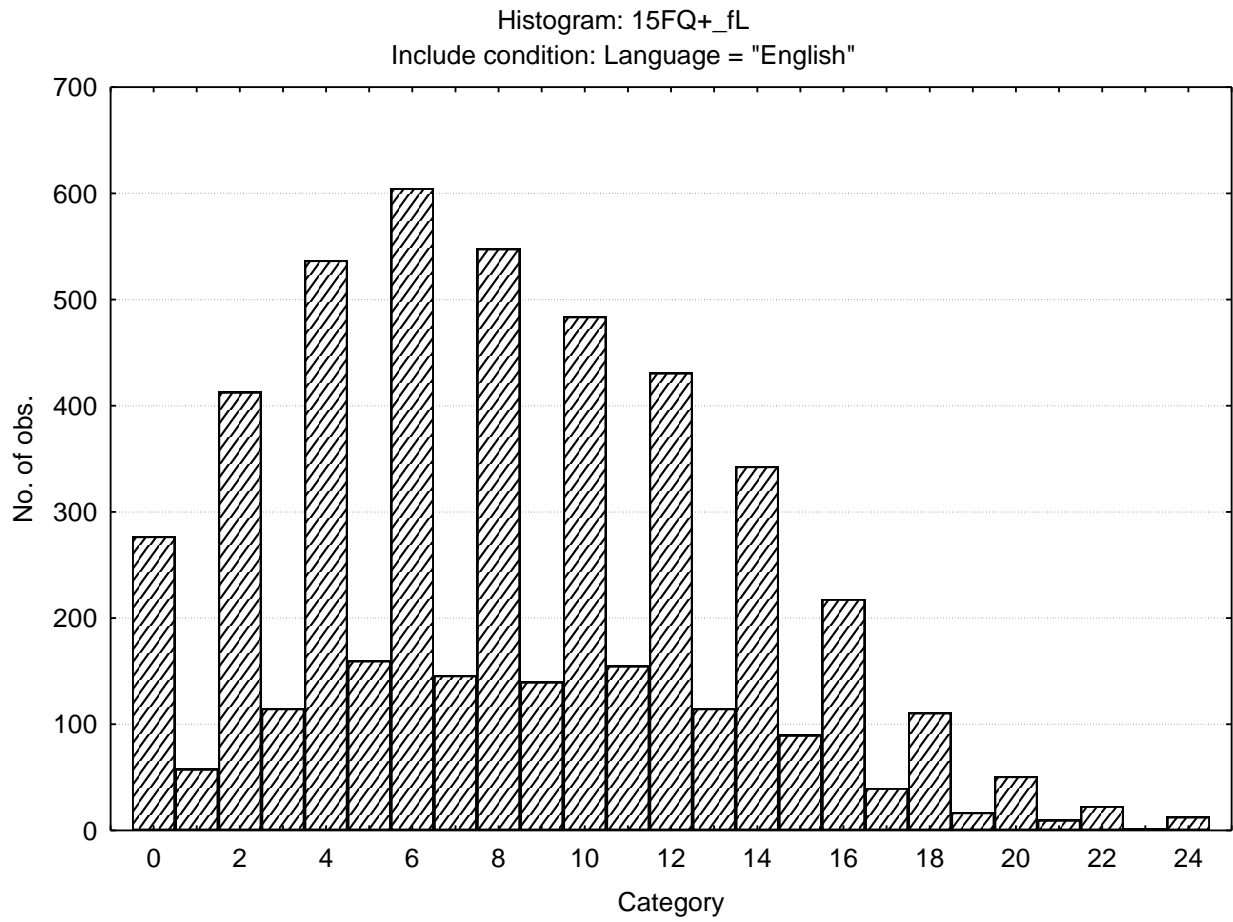
Retiring –socially bold



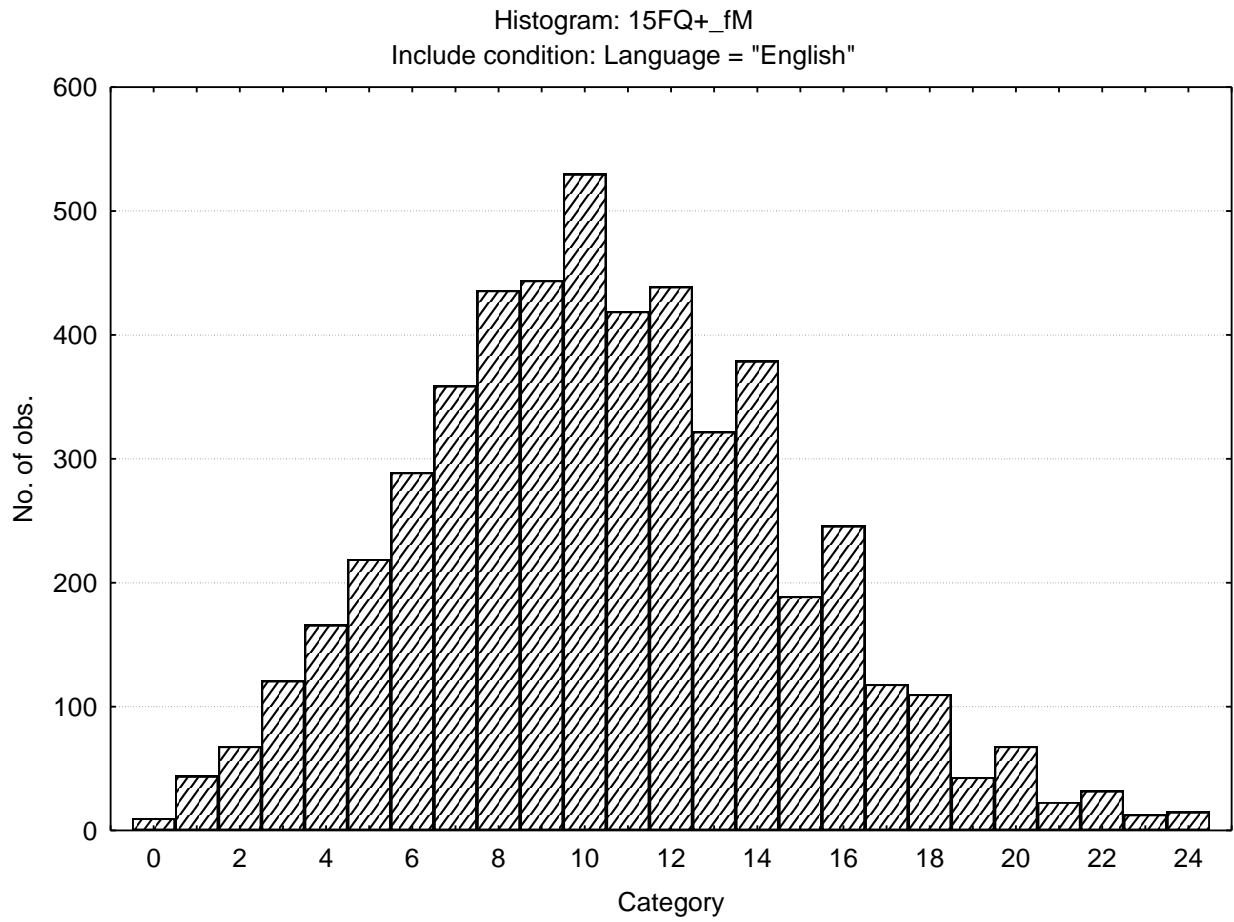
### Tough Minded – Tender Minded



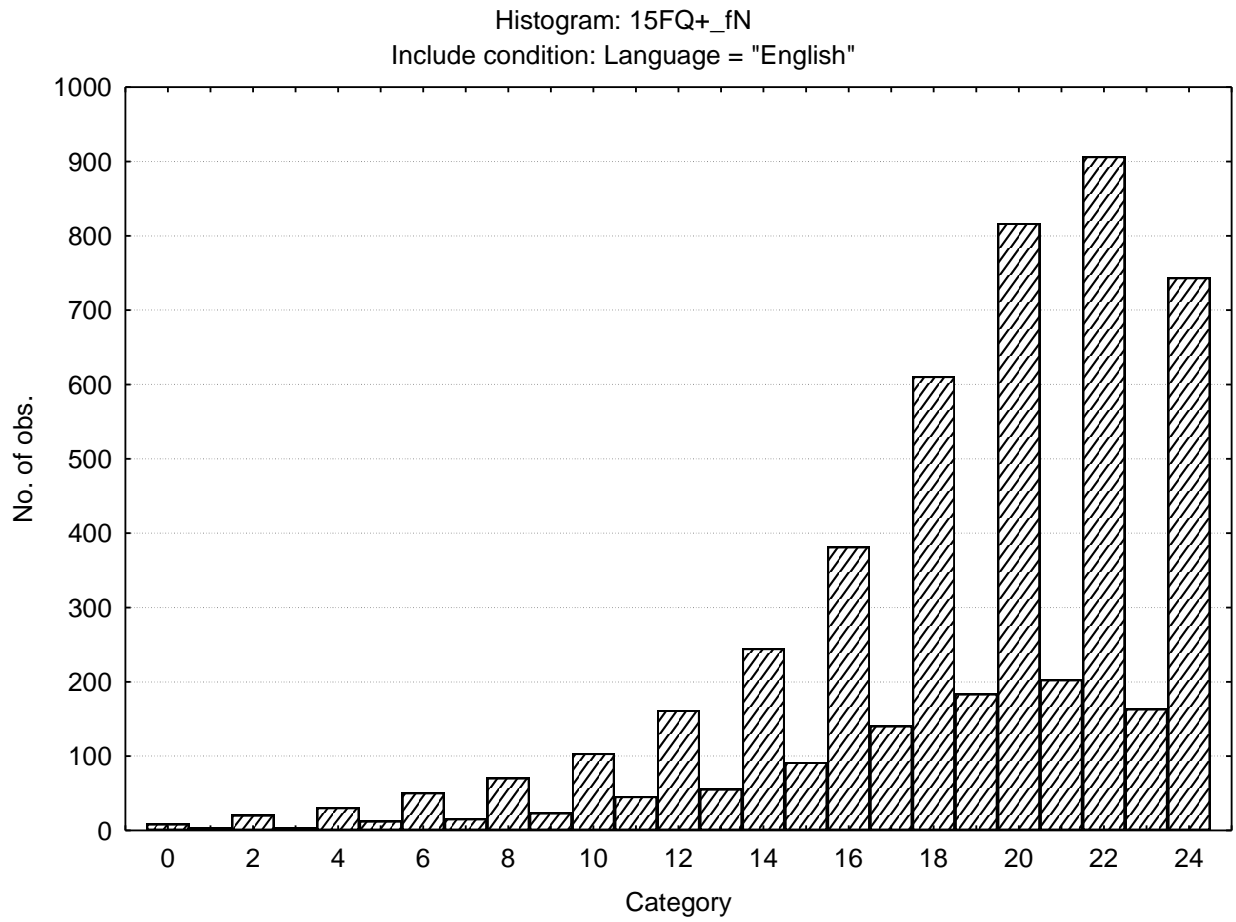
Trusting - Suspicious



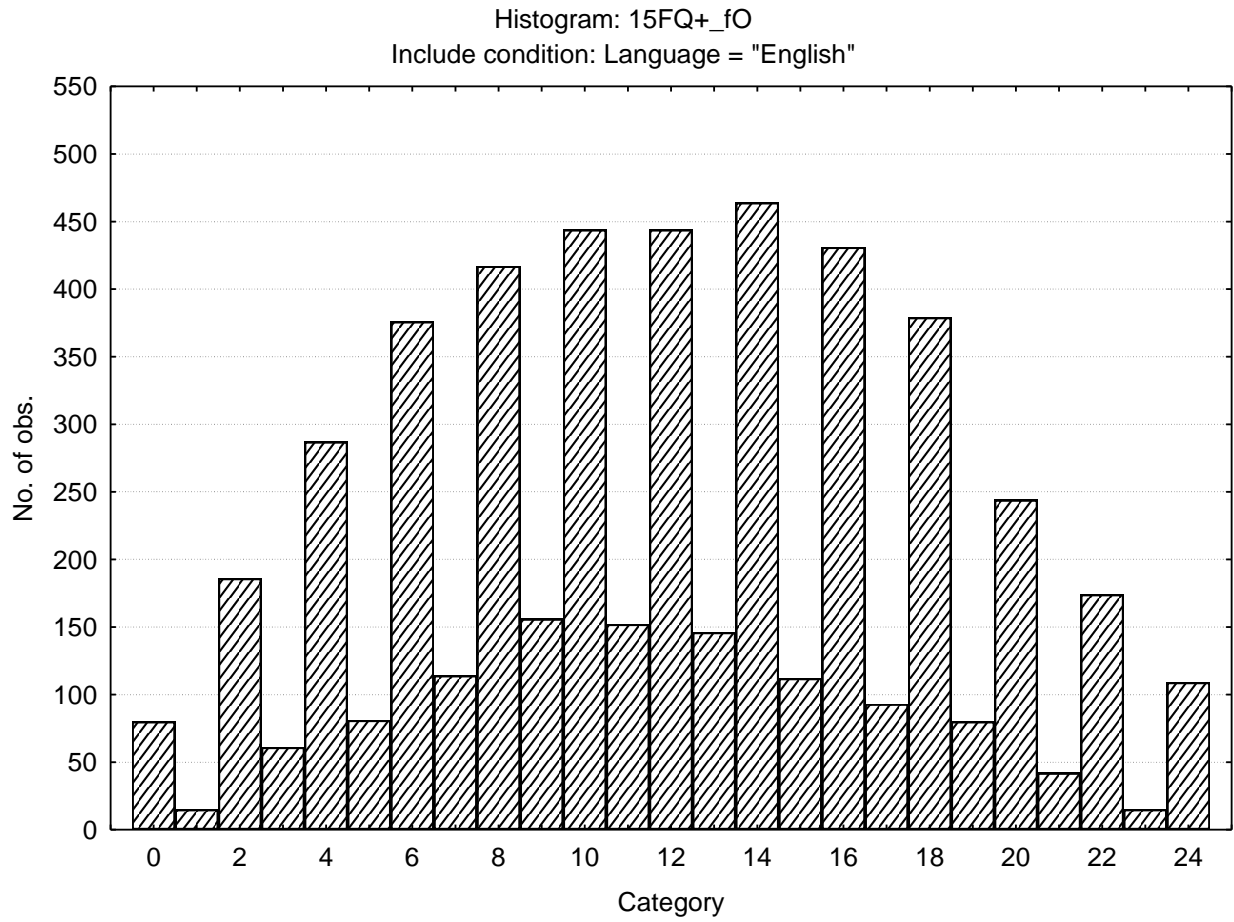
Concrete - Abstract



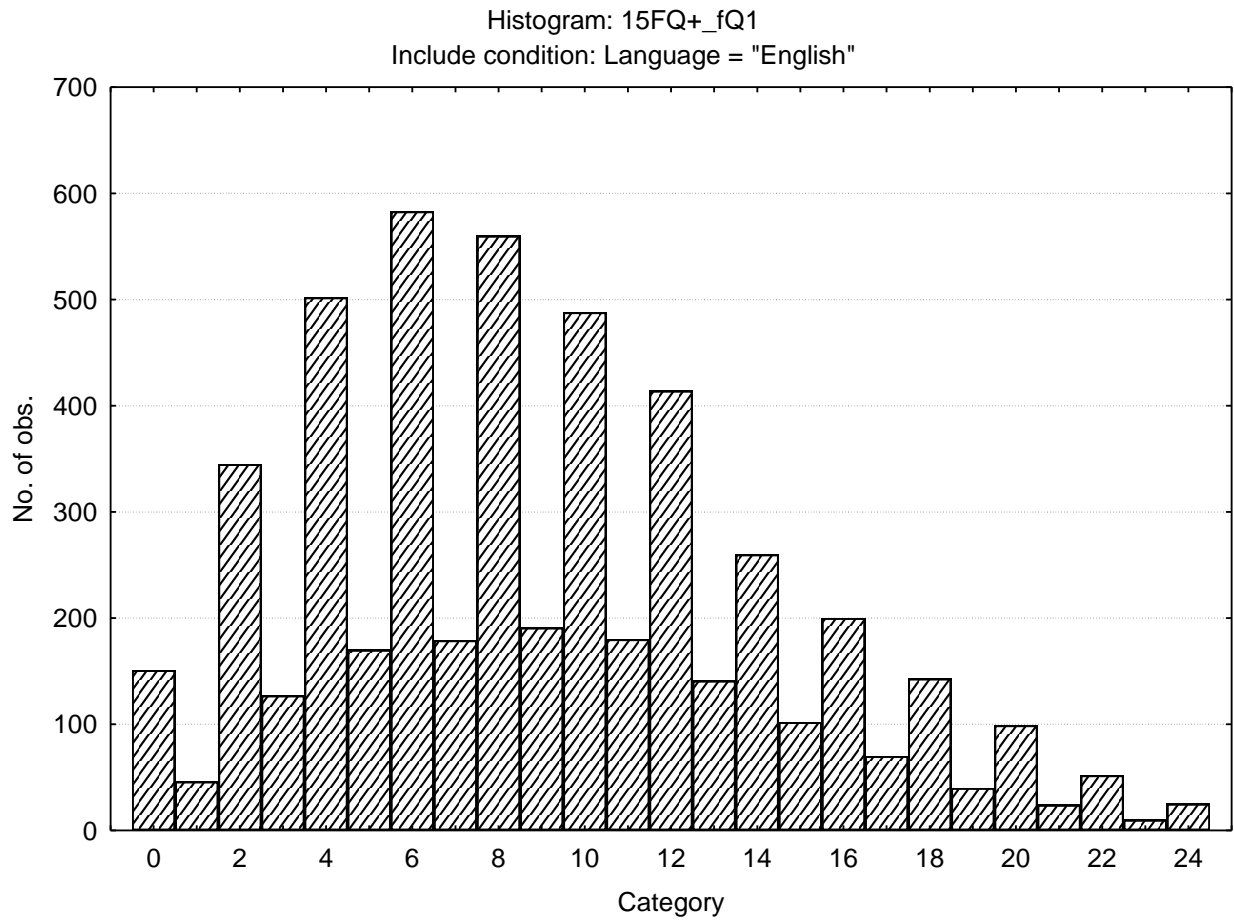
Direct-restrained



Self assured - Apprehensive

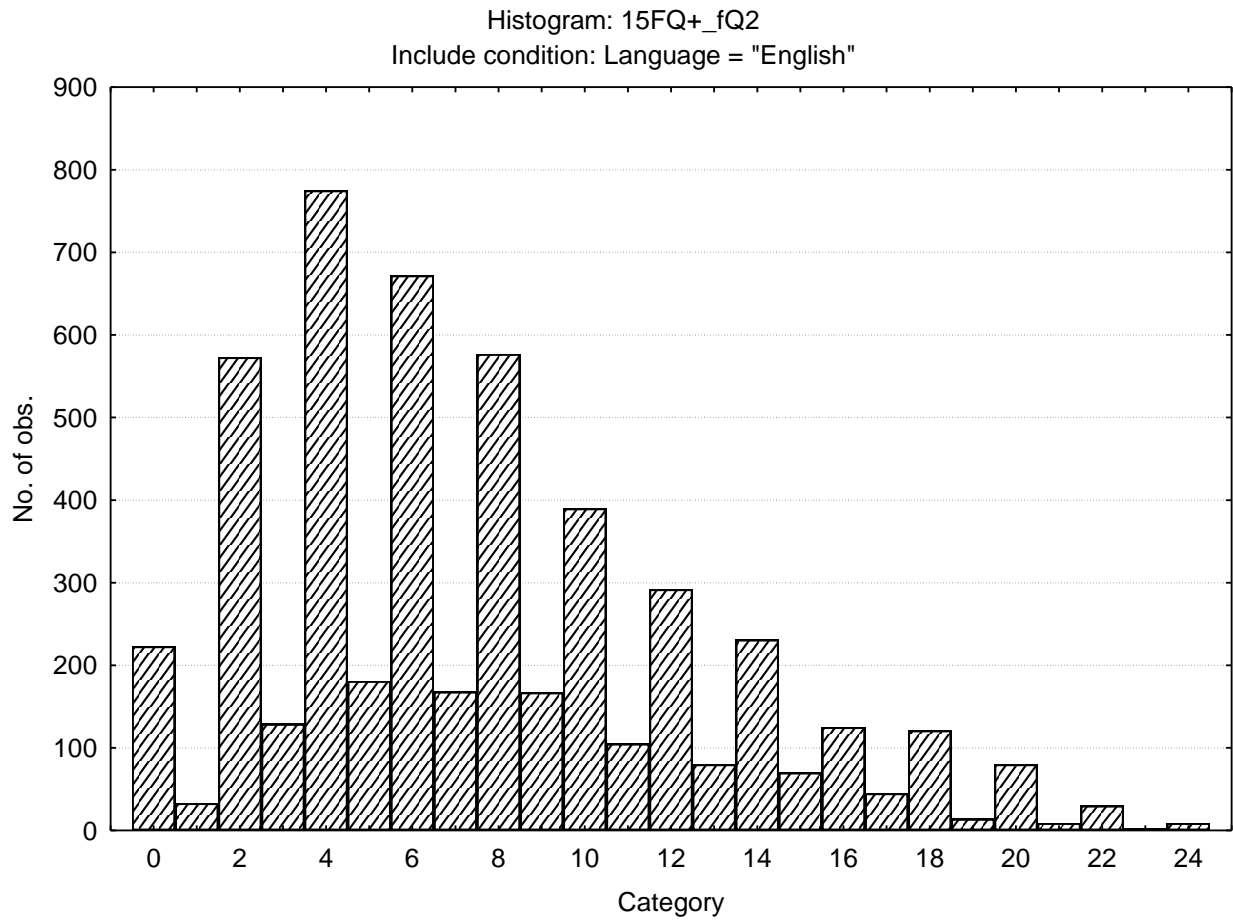


Conventional - Radical

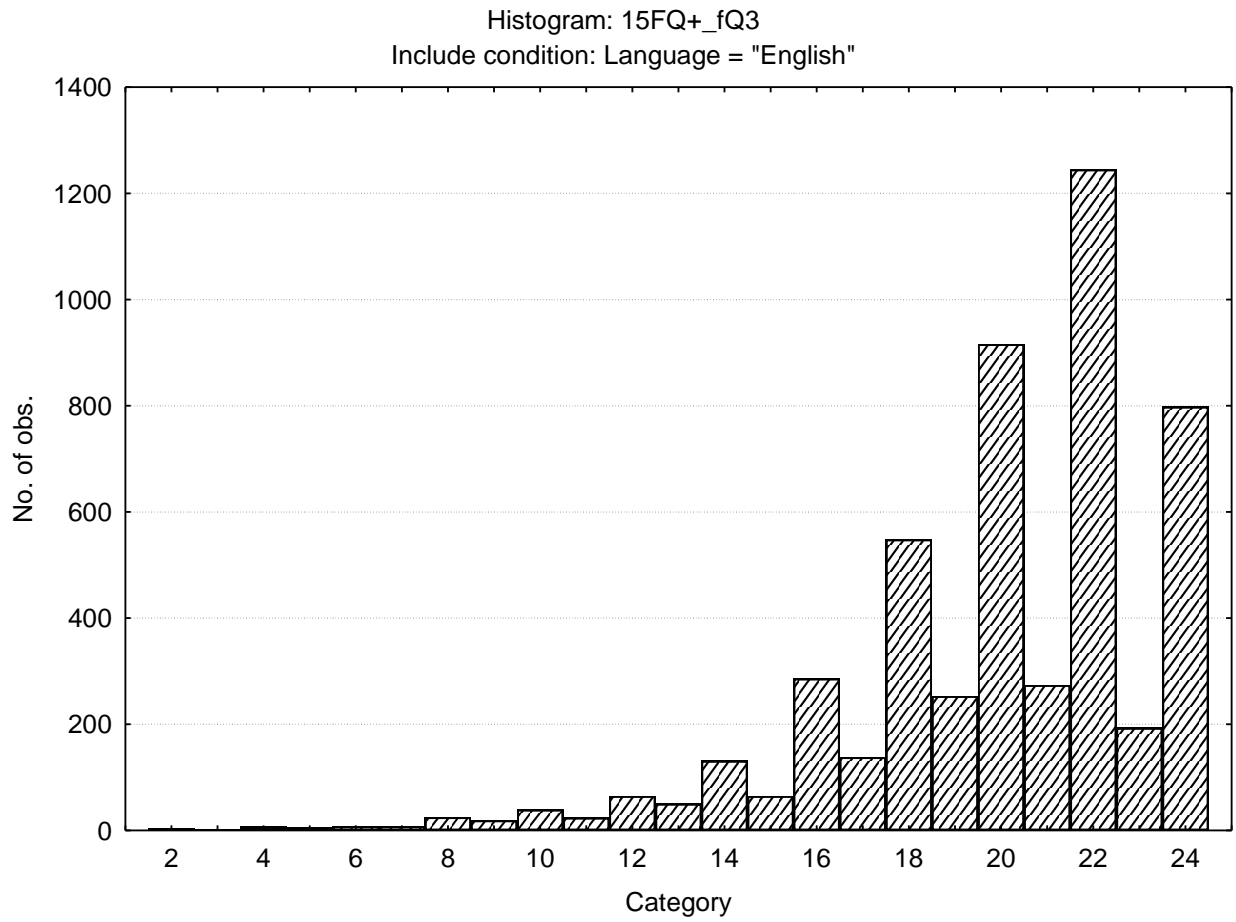




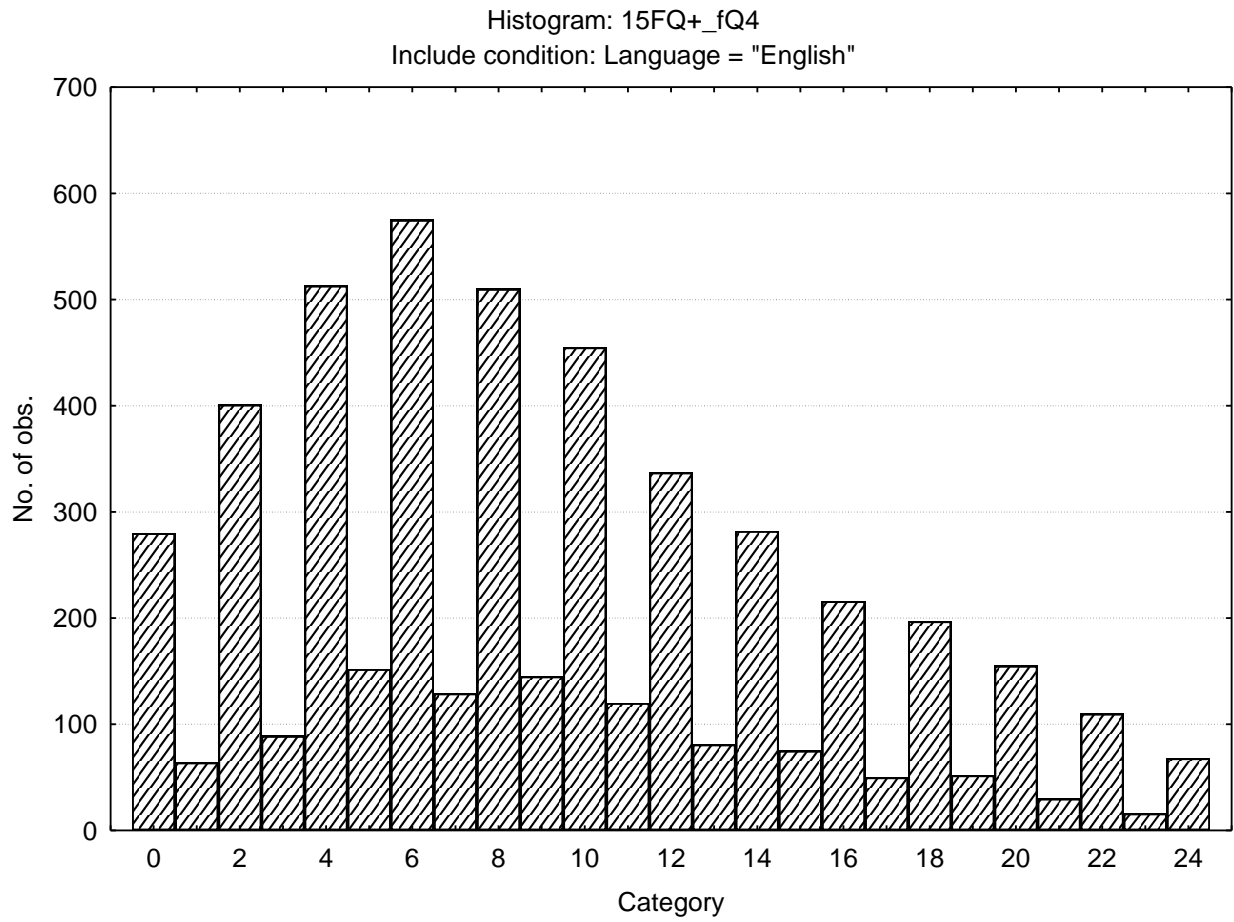
Group Orientated - Self Sufficient



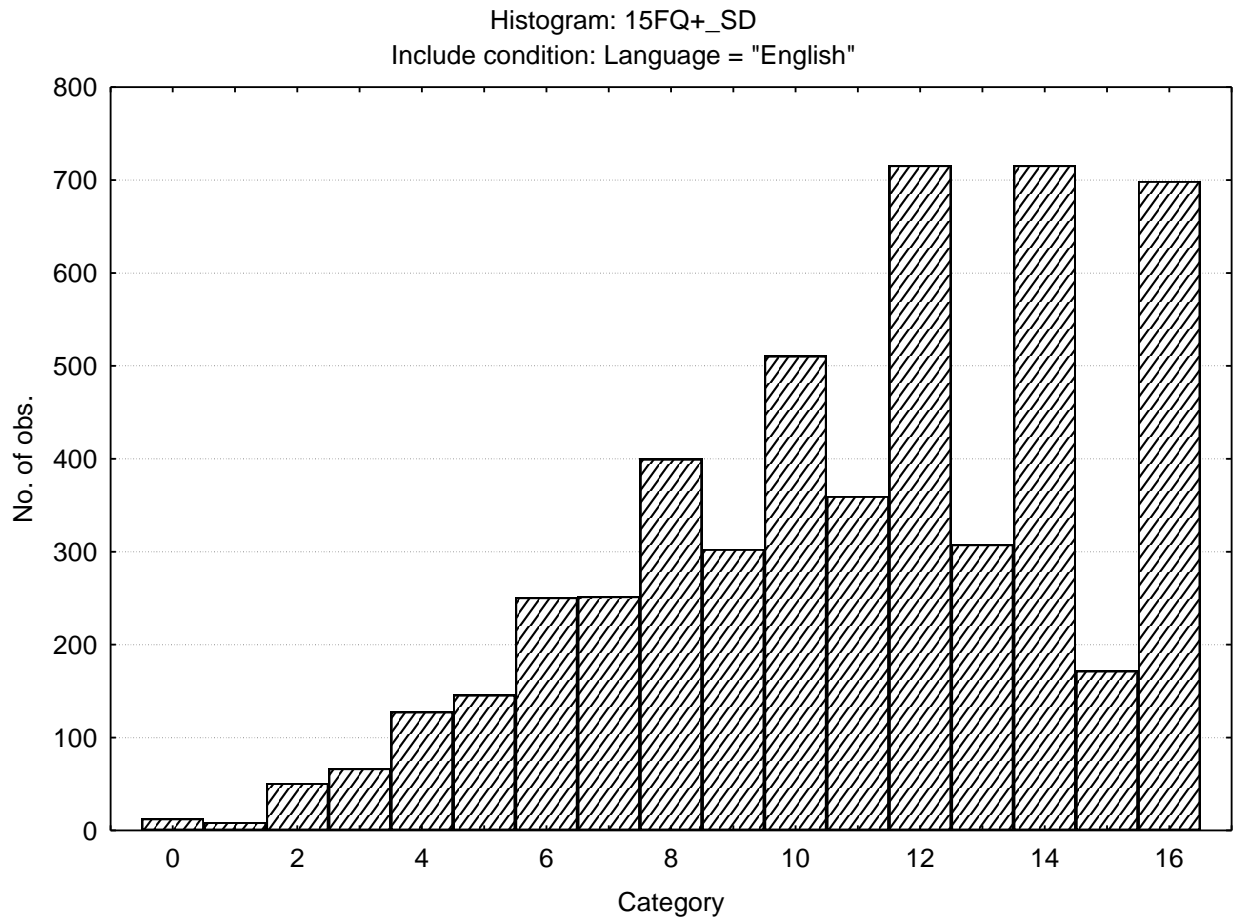
Informal – Self Disciplined



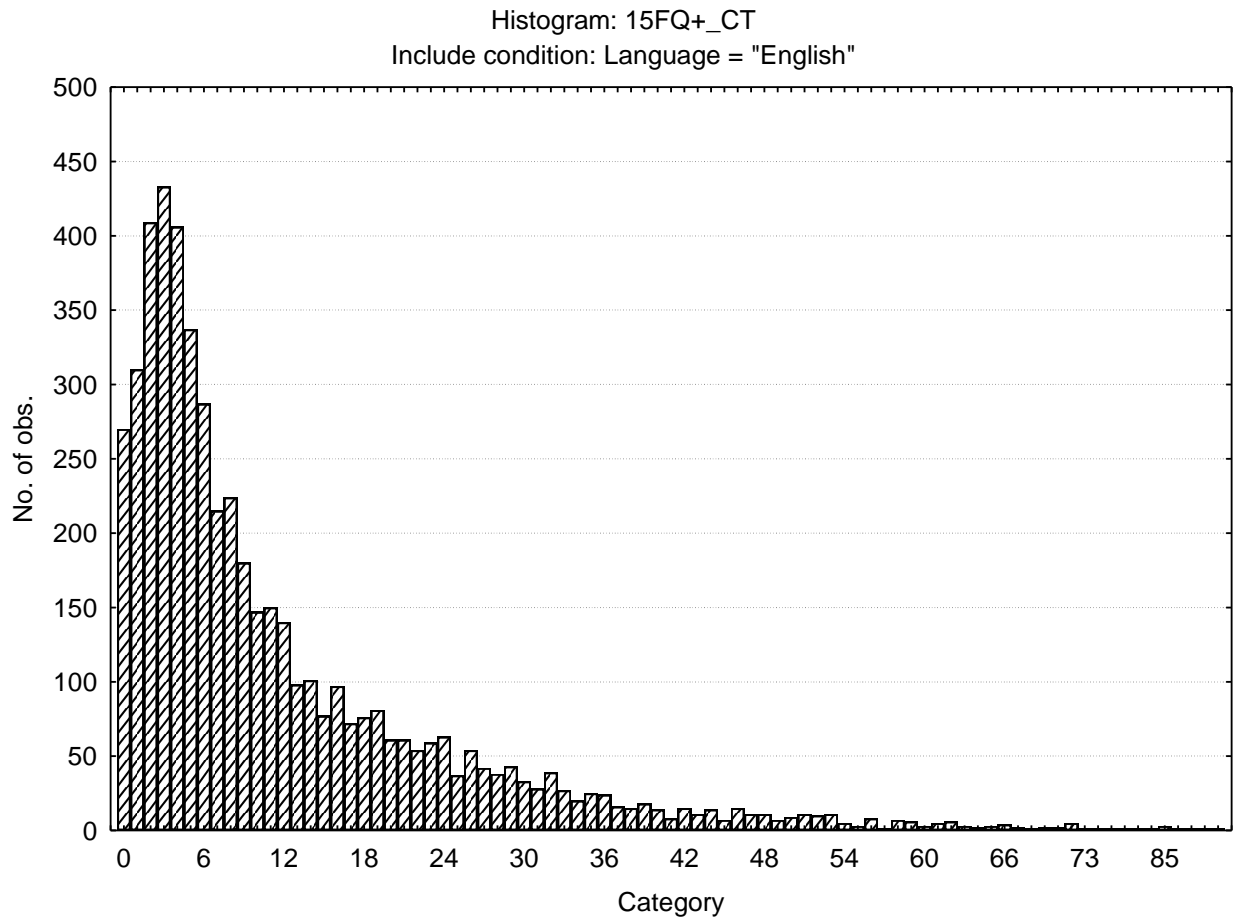
Composed - Tense Driven



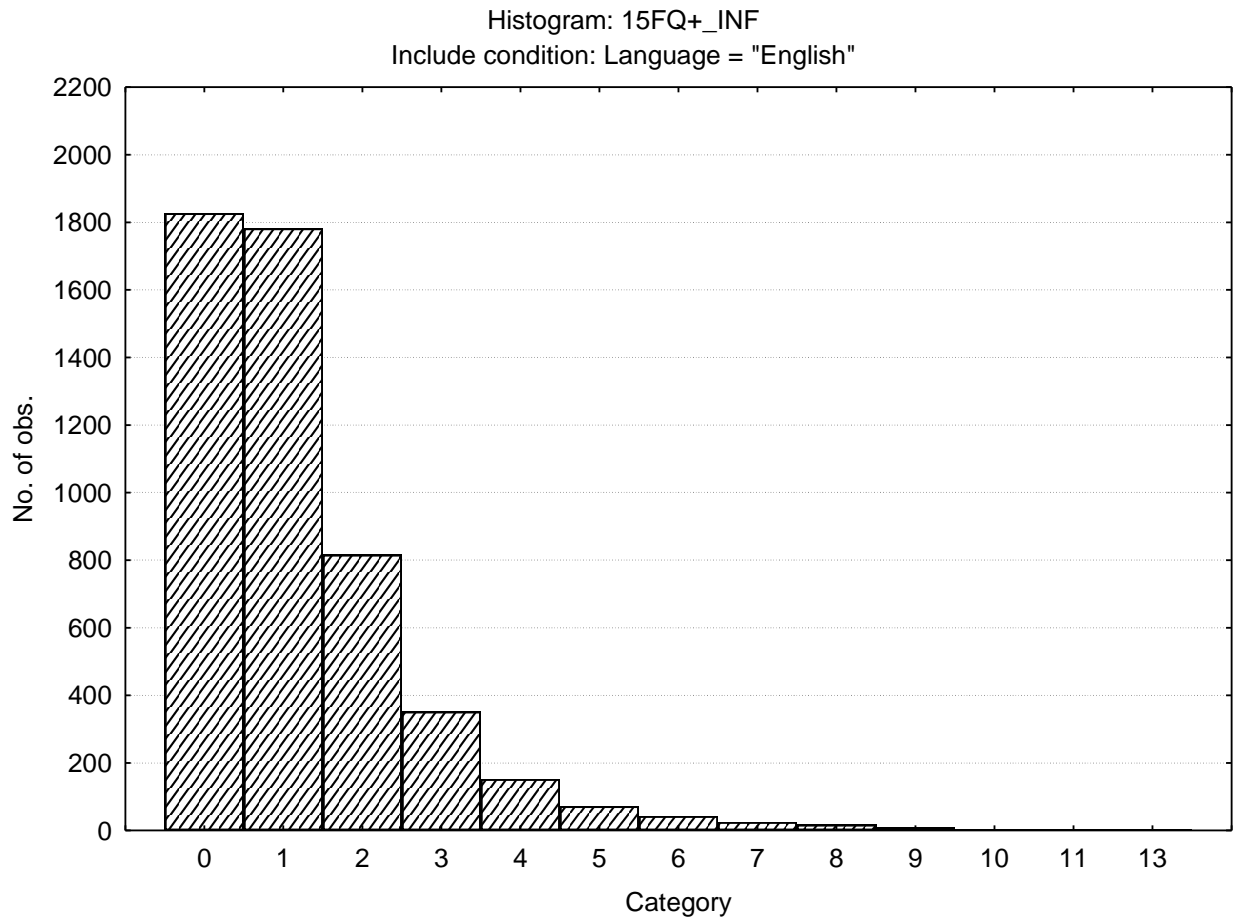
Social Desirability



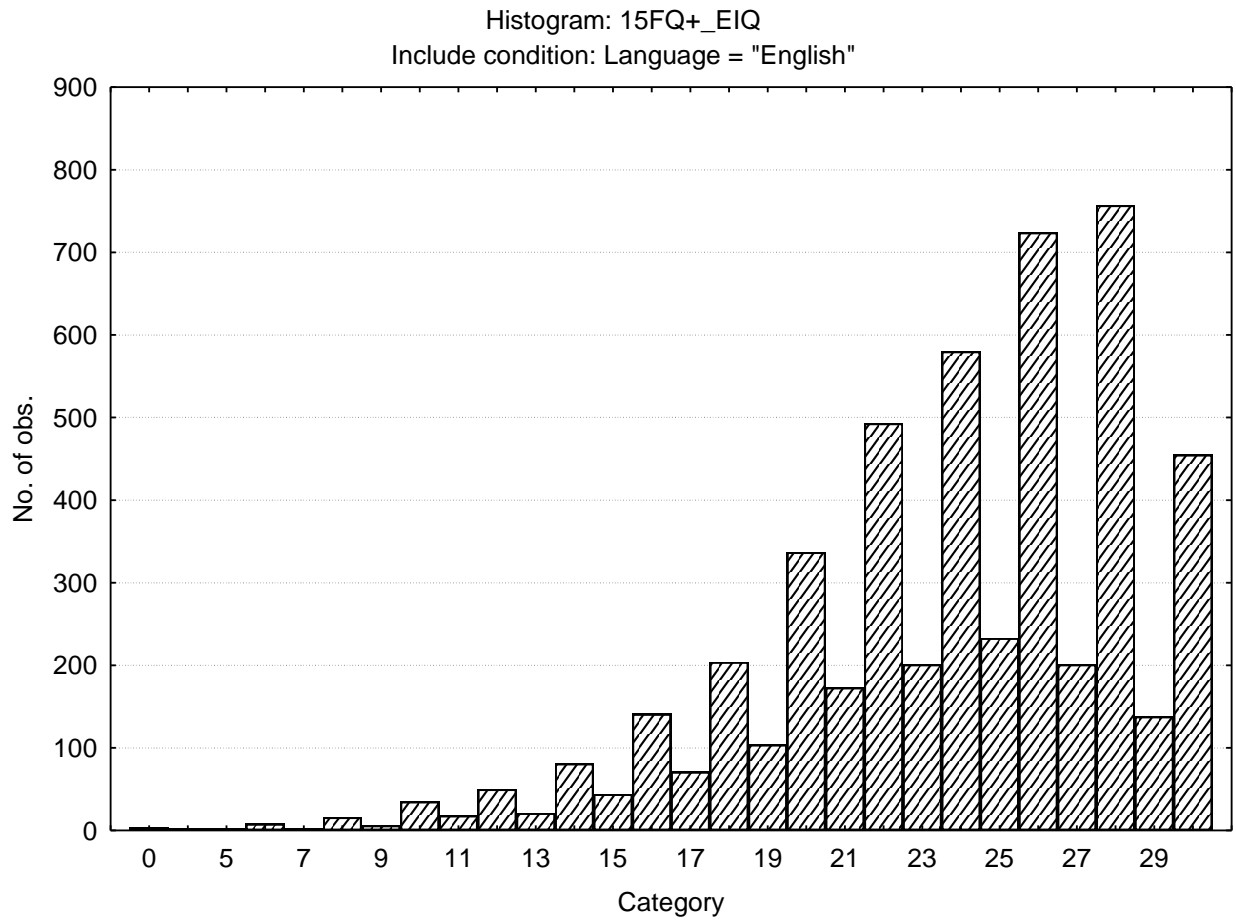
Central Tendency



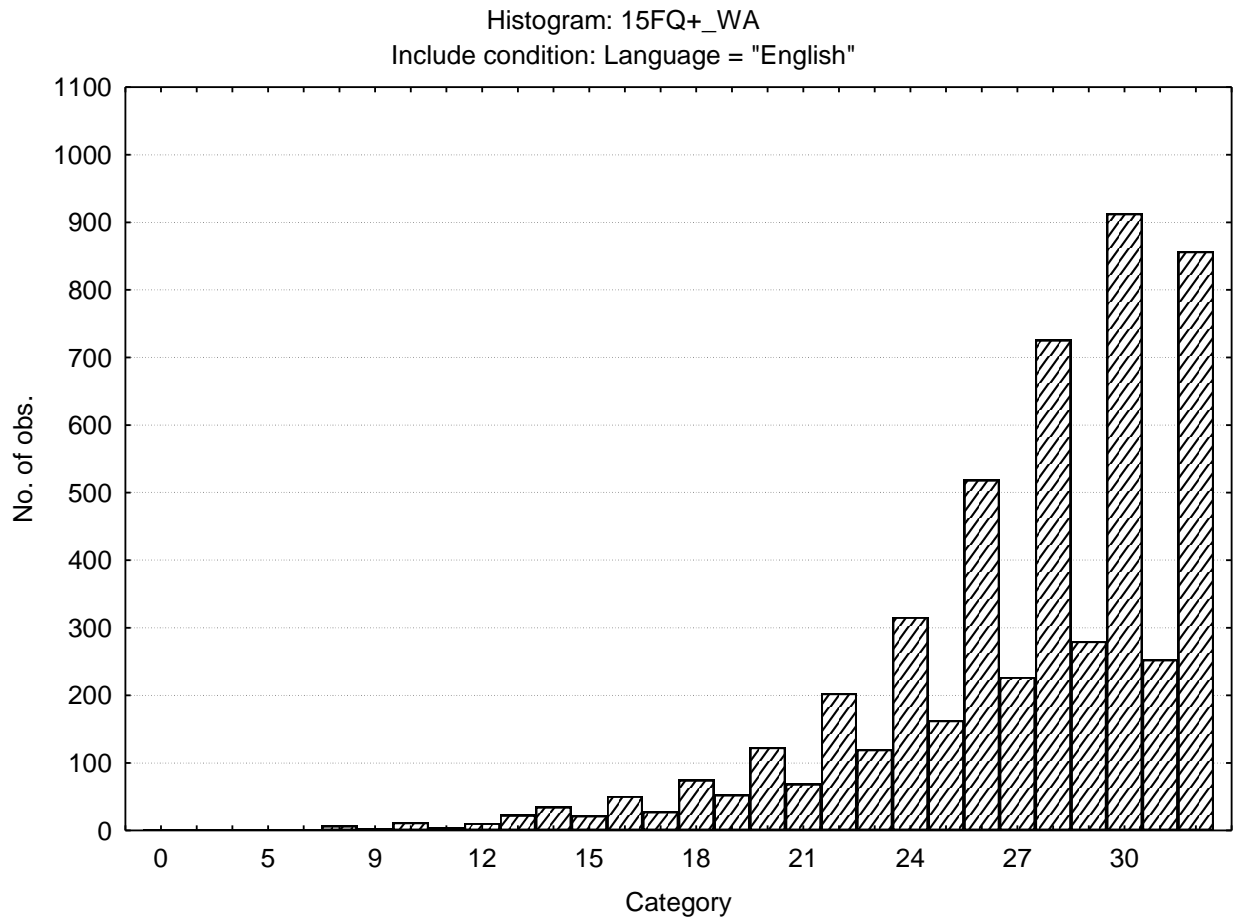
Infrequency



## Emotional Intelligence

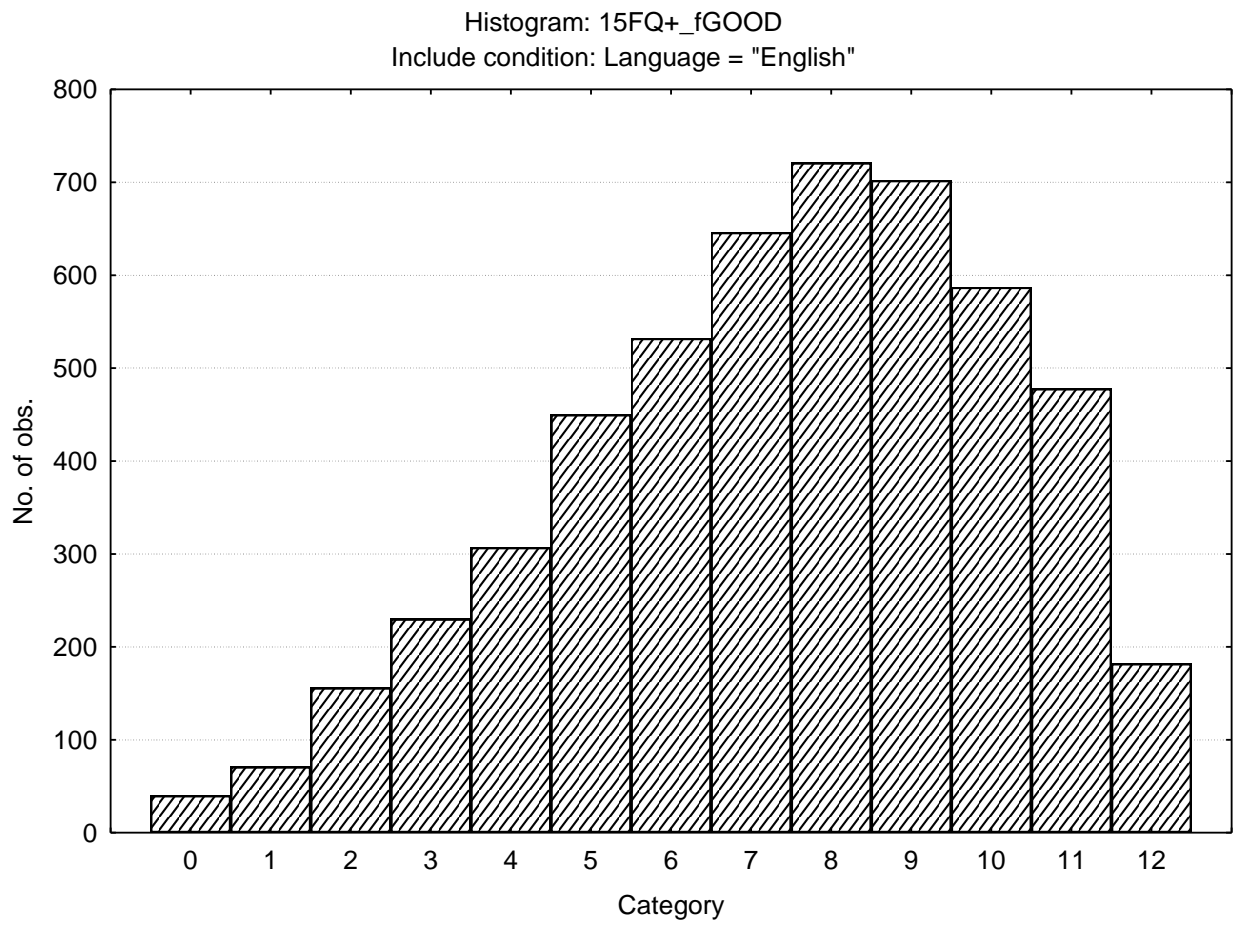


Work Attitude

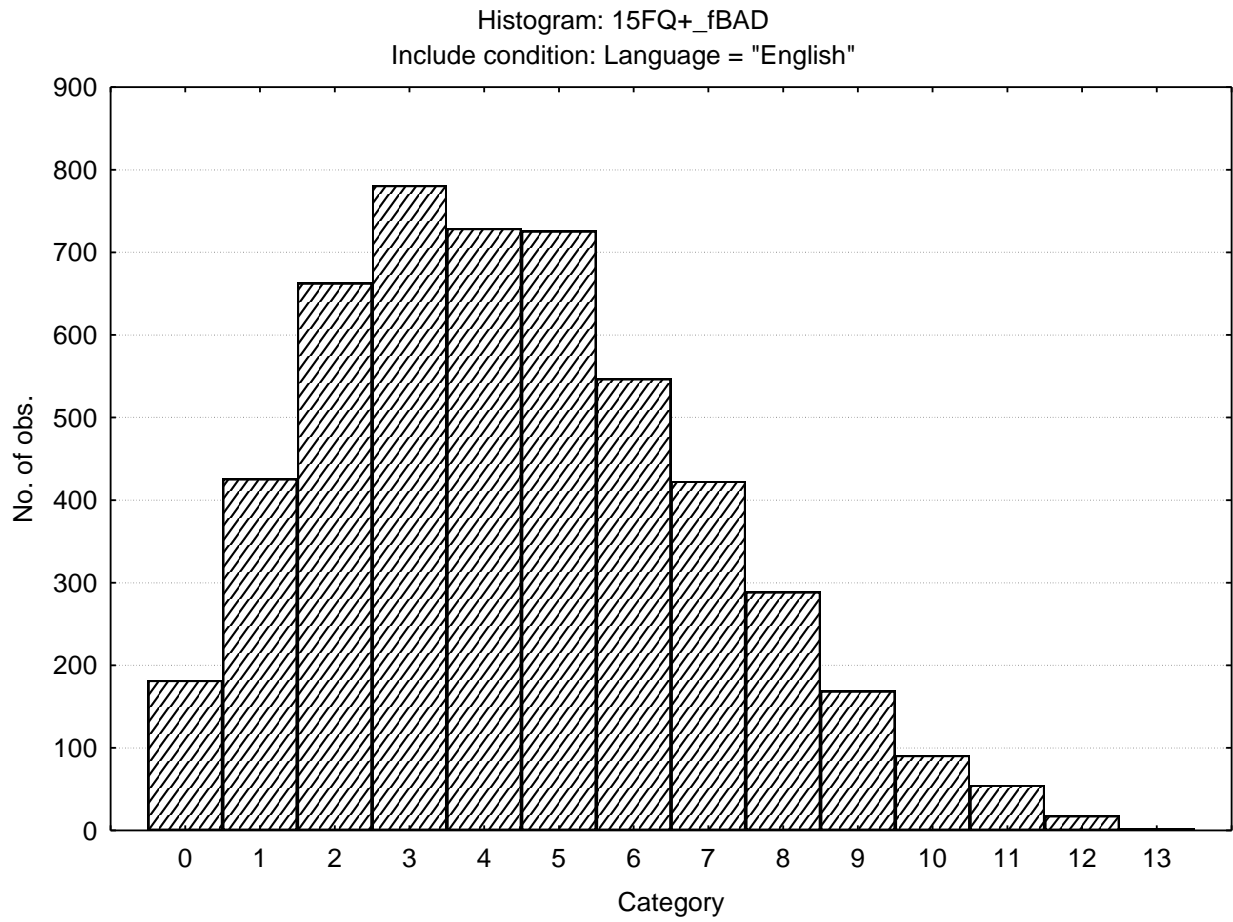




### Faking Good



## Faking Bad



	S10_1	S10_2	S10_3	S10_4	S10_5	S10_6	S10_7	S10_8	S10_9	S10_10
15FQ+_fA	1-11	12-13	14-15	16-17	18-19	20-20	21-22	23-24		
15FQ+_B	0-12	13-14	15-16	17-18	19-20	21-22	23-24			
15FQ+_fC	0-7	8-10	11-12	13-15	16-17	18-19	20-22	23-24		
15FQ+_fE	0-7	8-9	10-12	13-14	15-16	17-18	19-21	22-23	24-24	
15FQ+_fF	0-4	5-7	8-10	11-12	13-15	16-18	19-21	22-23	24-24	
15FQ+_fG	0-9	10-12	13-14	15-16	17-19	20-21	22-23	24-24		
15FQ+_fH	0-3	4-6	7-9	10-12	13-15	16-18	19-21	22-24		
15FQ+_fI	0-4	5-6	7-9	10-11	12-14	15-17	18-19	20-22	23-24	
15FQ+_fL	0--1	0-0	1-3	4-5	6-8	9-10	11-13	14-15	16-18	19-24
15FQ+_fM	0-1	2-3	4-6	7-8	9-10	11-12	13-14	15-16	17-19	20-24
15FQ+_fN	0-9	10-11	12-14	15-16	17-18	19-21	22-23	24-24		
15FQ+_fO	0-0	1-3	4-6	7-9	10-11	12-14	15-17	18-20	21-23	24-24
15FQ+_fQ1	0--1	0-1	2-3	4-6	7-9	10-11	12-14	15-16	17-19	20-24
15FQ+_fQ2	0--1	0-0	1-2	3-5	6-7	8-10	11-12	13-14	15-17	18-24
15FQ+_fQ3	2-13	14-14	15-16	17-18	19-20	21-21	22-23	24-24		
15FQ+_fQ4	0--1	0-0	1-3	4-6	7-9	10-12	13-15	16-18	19-21	22-24
15FQ+_SD	0-3	4-5	6-7	8-9	10-11	12-12	13-14	15-16		
15FQ+_CT	0--1	0-0	1-1	2-5	6-11	12-18	19-24	25-31	32-37	38-112
15FQ+_INF	0--1	0-0	1-1	2-2	3-3	4-4	5-5	6-6	7-7	8-13
15FQ+_EIQ	0-14	15-16	17-19	20-21	22-23	24-26	27-28	29-30		
15FQ+_WA	0-18	19-20	21-22	23-24	25-27	28-29	30-31	32-32		
15FQ+_fGOO D	0-1	2-3	4-4	5-6	7-7	8-8	9-10	11-11	12-12	
15FQ+_fBAD	0--1	0-0	1-1	2-3	4-4	5-5	6-6	7-8	9-9	10-13