

Norm group: SA Afrikaans speakers updated 2010

Norm type

Standard deviation norm

Sample composition

The sample consisted of 2857 Afrikaans speaking South Africans tested by Psytech SA and collaborators in the period up to February 2010

Gender composition of the sample

Category	Frequency table: Sex			
	Count	Cumulative Count	Percent	Cumulative Percent
F	980	980	34.30172	34.3017
M	1870	2850	65.45327	99.7550
Missing	7	2857	0.24501	100.0000

Educational composition of the sample

Category	Frequency table: Education			
	Count	Cumulative Count	Percent	Cumulative Percent
Grade 12	951	951	33.28666	33.2867
Degree	457	1408	15.99580	49.2825
Post Graduate	383	1791	13.40567	62.6881
Technikon	301	2092	10.53553	73.2237
University diploma	150	2242	5.25026	78.4739
Grade 10 or 11	117	2359	4.09520	82.5691
Vocational Training	106	2465	3.71019	86.2793
Diploma	21	2486	0.73504	87.0144
Certificate	24	2510	0.84004	87.8544
Missing	347	2857	12.14561	100.0000

Language composition of the sample

Category	Frequency table: Language			
	Count	Cumulative Count	Percent	Cumulative Percent
Afrikaans	2857	2857	100.0000	100.0000
Missing	0	2857	0.0000	100.0000

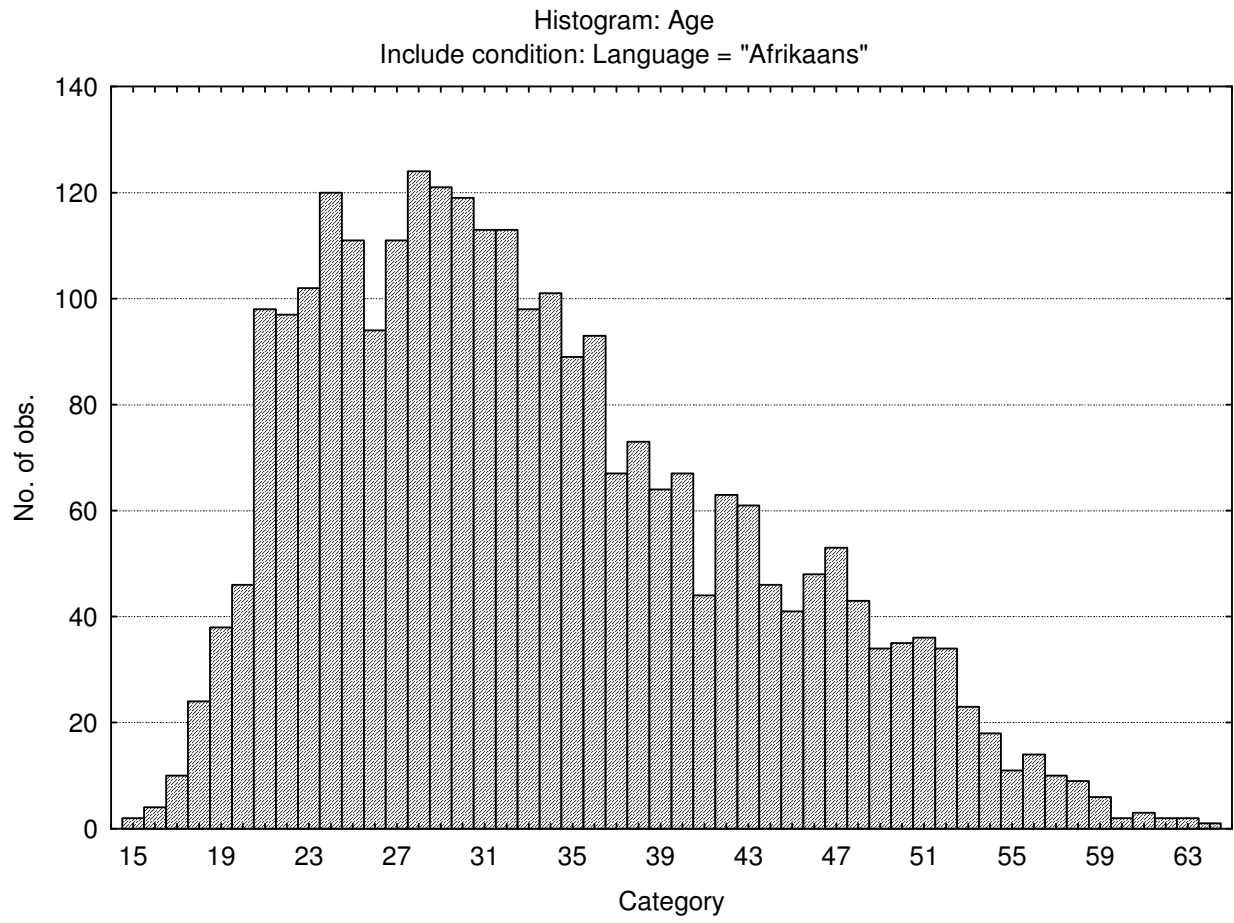
Updated 7 July 2010

Race composition of the sample

Category	Frequency table: RaceGroup			
	Count	Cumulative Count	Percent	Cumulative Percent
African	74	74	2.59013	2.5901
European	2399	2473	83.96920	86.5593
Coloured	315	2788	11.02555	97.5849
Asian	5	2793	0.17501	97.7599
Missing	64	2857	2.24011	100.0000

Age composition of the sample

Variable	Descriptive Statistics					
	Mean	Std.Dev	Minimum	Maximum	N	No.cases Missing
Age	33.44668	9.611198	15.00000	71.00000	2738	119



Updated 7 July 2010

N14-3

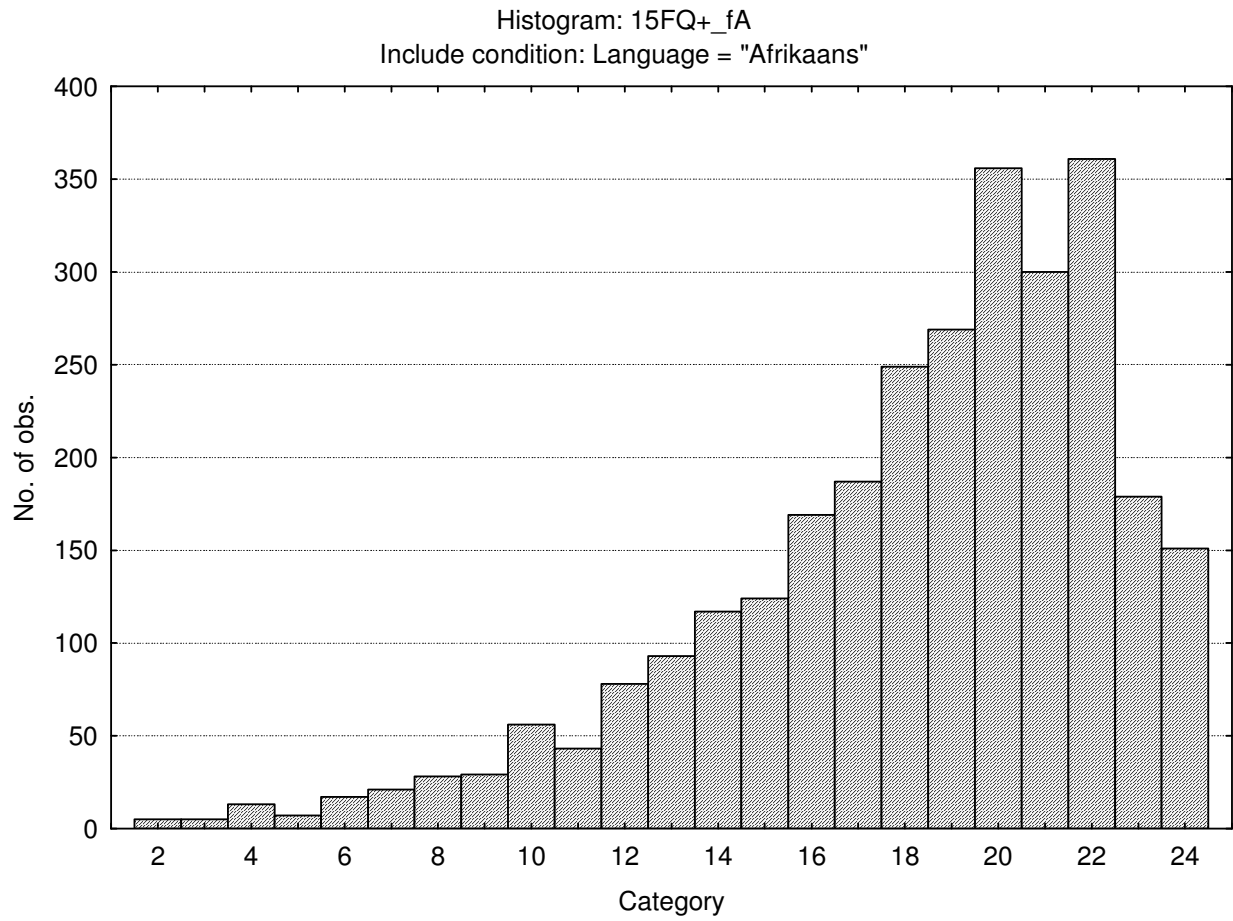
Descriptive statistics on 15FQPlus Raw Scores

Variable		Descriptive Statistics (15fqplus raws and resps dups rem) Include condition: Language = "Afrikaans"					
		Mean	Std.Dev	Minimum	Maximum	N	No.cases Missing
15FQ+_fA	Distant aloof - empathic	18.23626	4.22036	2.000000	24.0000	2857	0
15FQ+_B	Intellectance	19.51803	4.28433	1.000000	24.0000	2857	0
15FQ+_fC	Affected by feelings - emotionally stable	16.84879	5.10021	0.000000	24.0000	2857	0
15FQ+_fE	Accommodating - Dominant	16.43472	4.85923	0.000000	24.0000	2857	0
15FQ+_fF	Sober serious - Enthusiastic	13.91845	5.74968	0.000000	24.0000	2857	0
15FQ+_fG	Expedient - Conscientious	18.87644	4.81599	0.000000	24.0000	2857	0
15FQ+_fH	Retiring - Socially bold	14.17466	6.45280	0.000000	24.0000	2857	0
15FQ+_fI	Tough Minded - Tender minded	13.88309	5.44050	0.000000	24.0000	2857	0
15FQ+_fL	Trusting - Suspicious	9.41092	5.11669	0.000000	24.0000	2857	0
15FQ+_fM	Concrete - Abstract	10.15191	4.34651	0.000000	24.0000	2857	0
15FQ+_fN	Direct - Restrained	18.35772	4.84358	0.000000	24.0000	2857	0
15FQ+_fO	Self-assured - Apprehensive	13.03045	5.84332	0.000000	24.0000	2857	0
15FQ+_fQ1	Conventional - Radical	8.62058	4.95465	0.000000	24.0000	2857	0
15FQ+_fQ2	Group - orientated - Self-sufficient	8.75009	5.51035	0.000000	24.0000	2857	0
15FQ+_fQ3	Informal- self disciplined	20.55023	3.21896	1.000000	24.0000	2857	0
15FQ+_fQ4	Composed - tense driven	10.85579	6.13534	0.000000	24.0000	2857	0
15FQ+_SD	Social desirability	9.95590	3.63988	0.000000	16.0000	2857	0
15FQ+_CT	Central Tendency	12.64858	14.42836	0.000000	151.0000	2857	0
15FQ+_INF	Infrequency	1.49842	1.69798	0.000000	18.0000	2857	0
15FQ+_EIQ	Derived score: Emotional Intelligence	22.72594	5.06016	4.000000	30.0000	2857	0
15FQ+_WA	Derived score: Work attitude	27.16556	4.23052	6.000000	32.0000	2857	0
15FQ+_fGOOD	Faking good	6.59223	2.78790	0.000000	12.0000	2857	0
15FQ+_fBAD	Faking bad	4.74694	2.59673	0.000000	13.0000	2857	0

Updated 7 July 2010

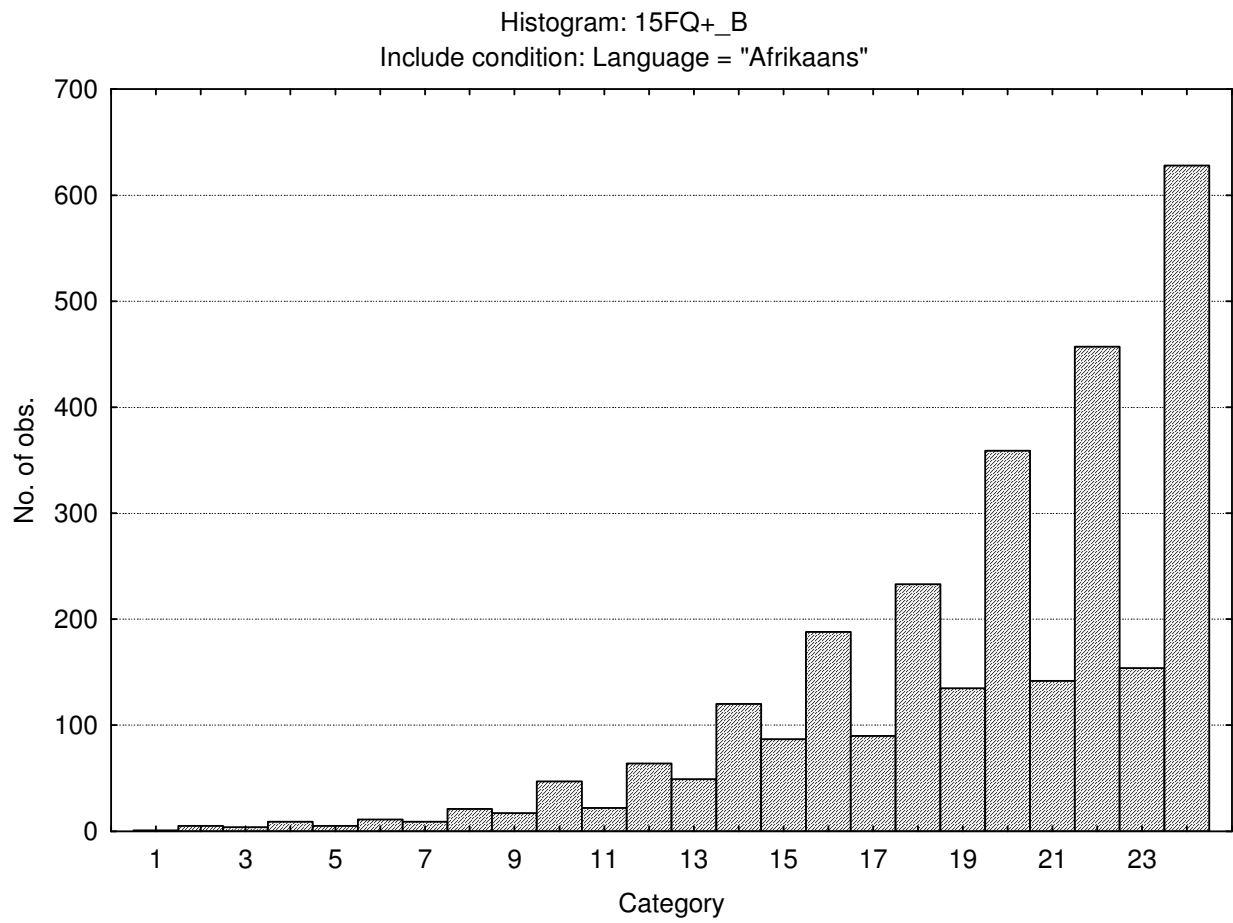
Frequency distributions of 15FQPlus scale scores

Distant Aloof - Empathic



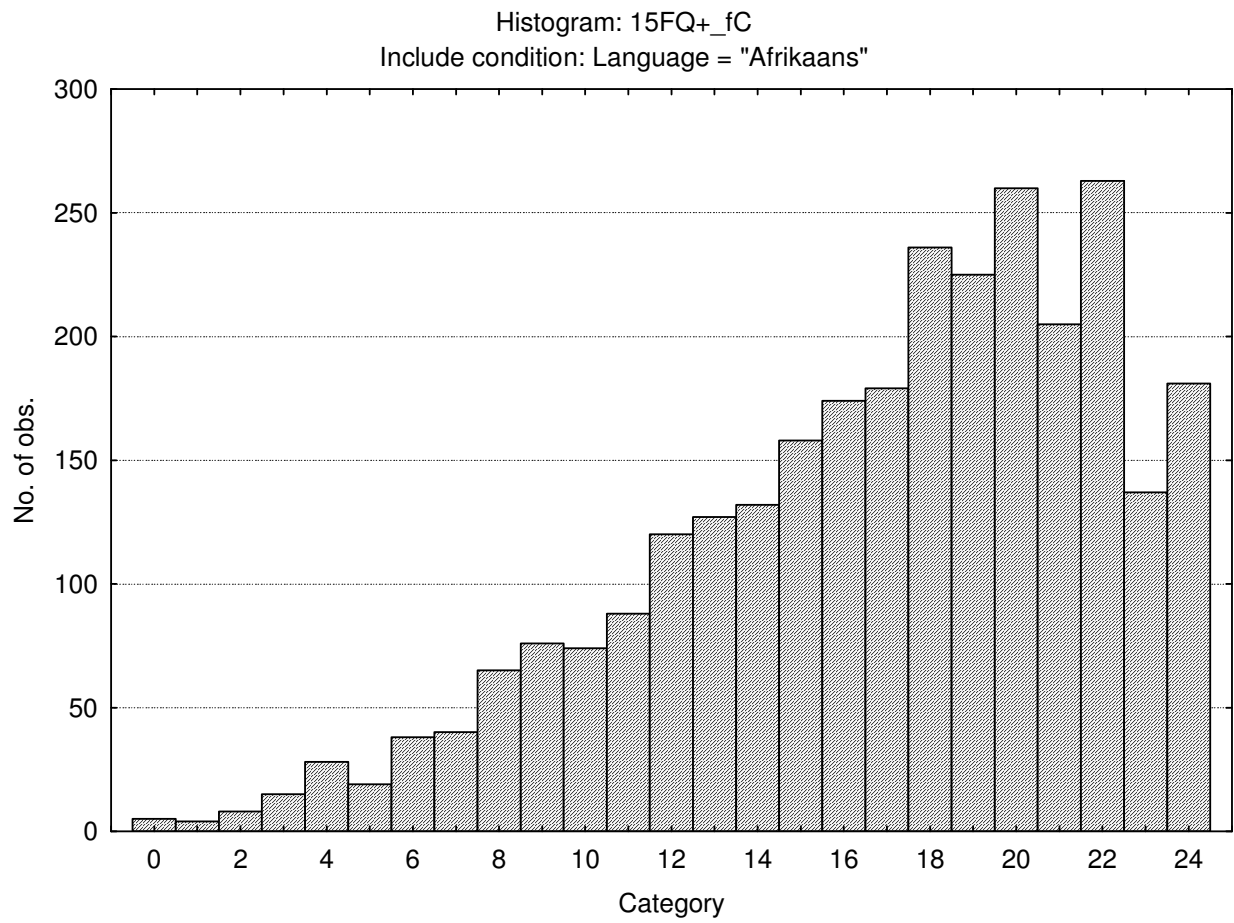
Updated 7 July 2010

Intellectance



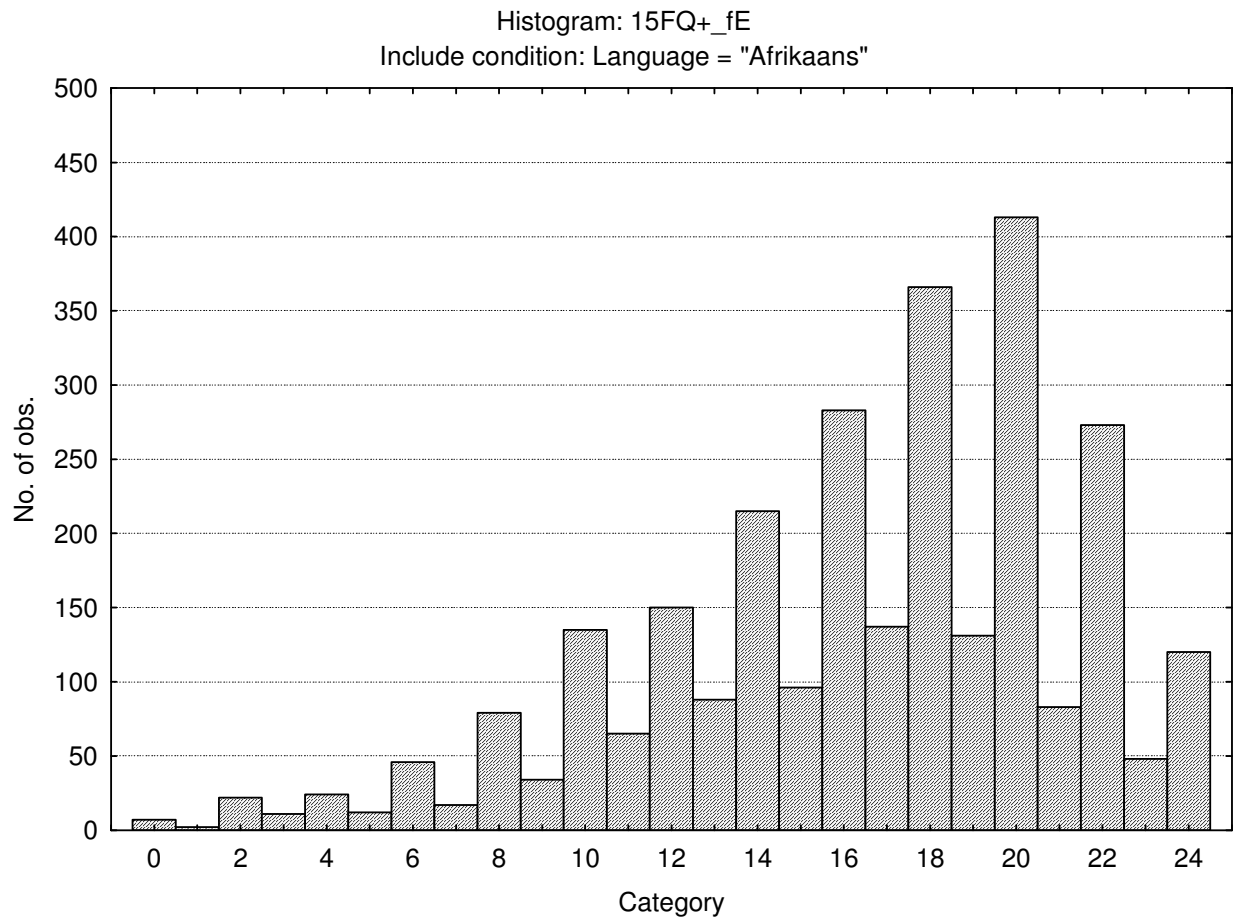
Updated 7 July 2010

Affected by Feelings – Emotionally Stable



Updated 7 July 2010

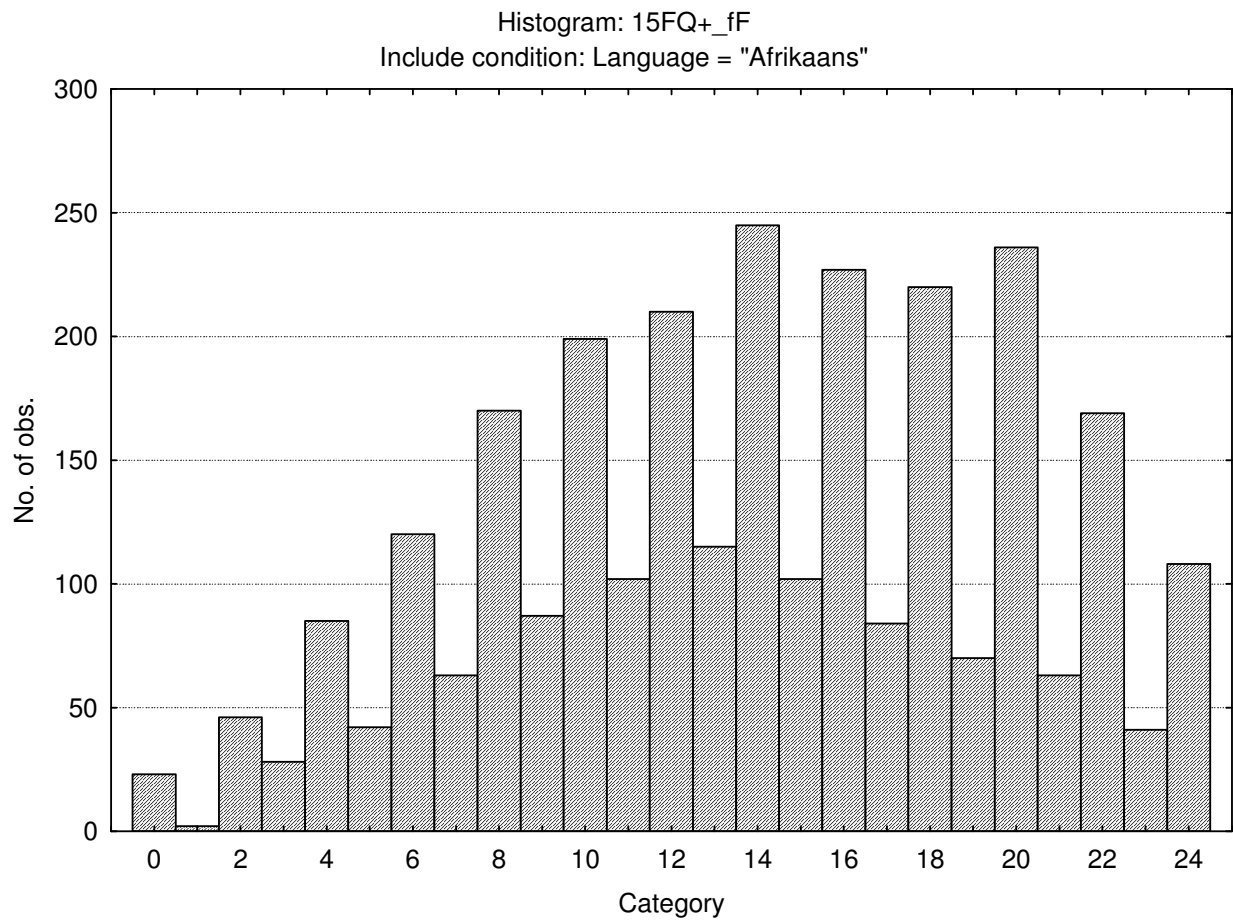
Accommodating - Dominant



Updated 7 July 2010

N14-8

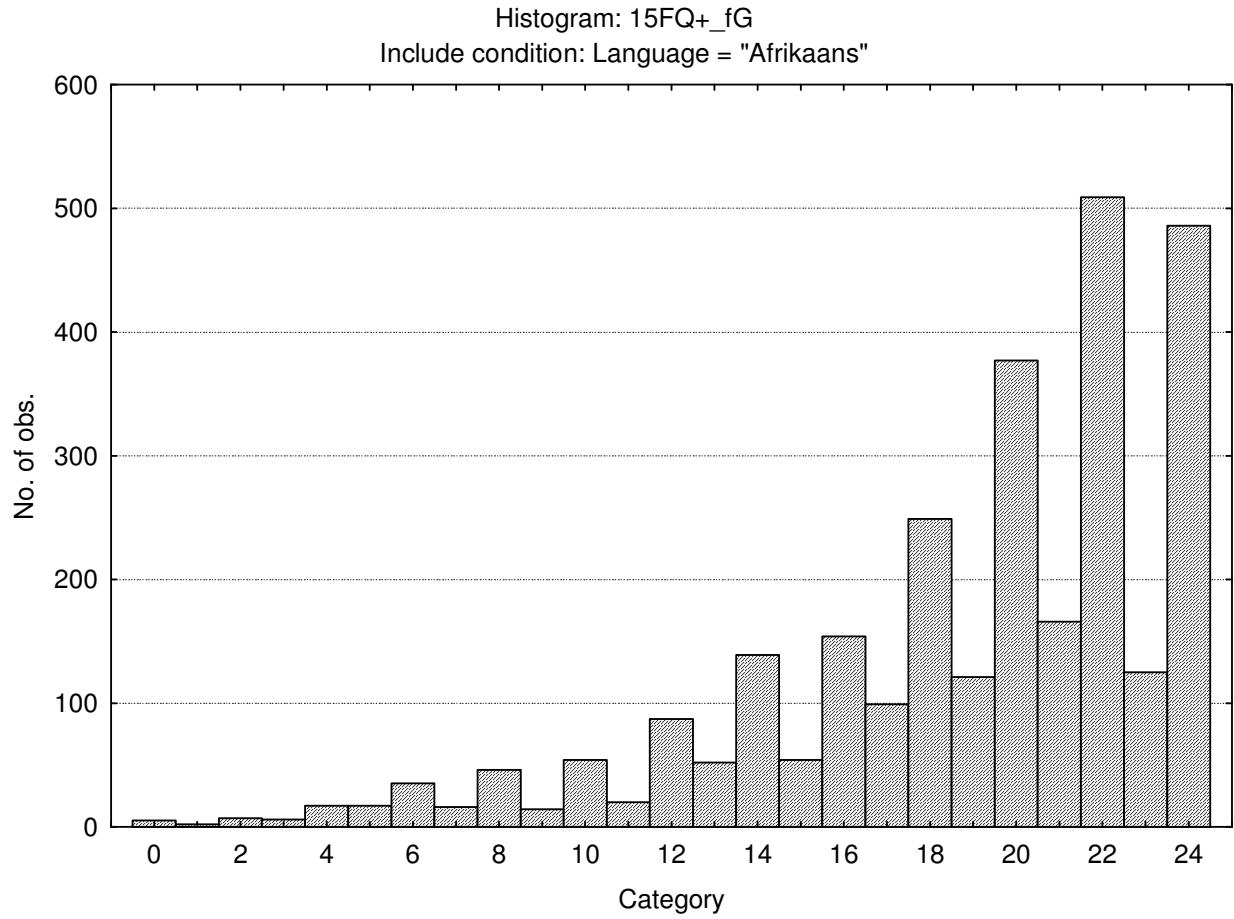
Sober Serious – Enthusiastic



Updated 7 July 2010

N14-9

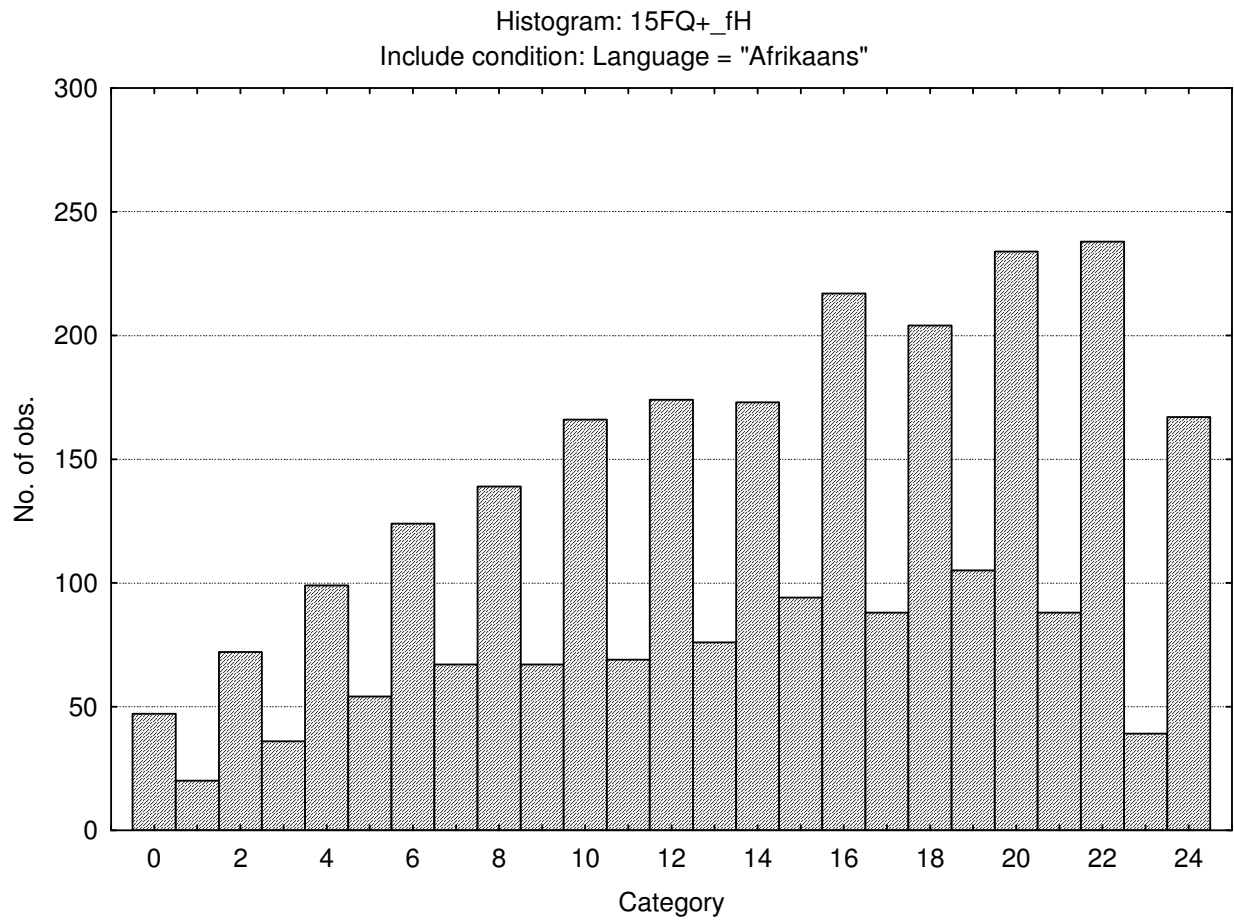
Expedient - Conscientious



Updated 7 July 2010

N14-10

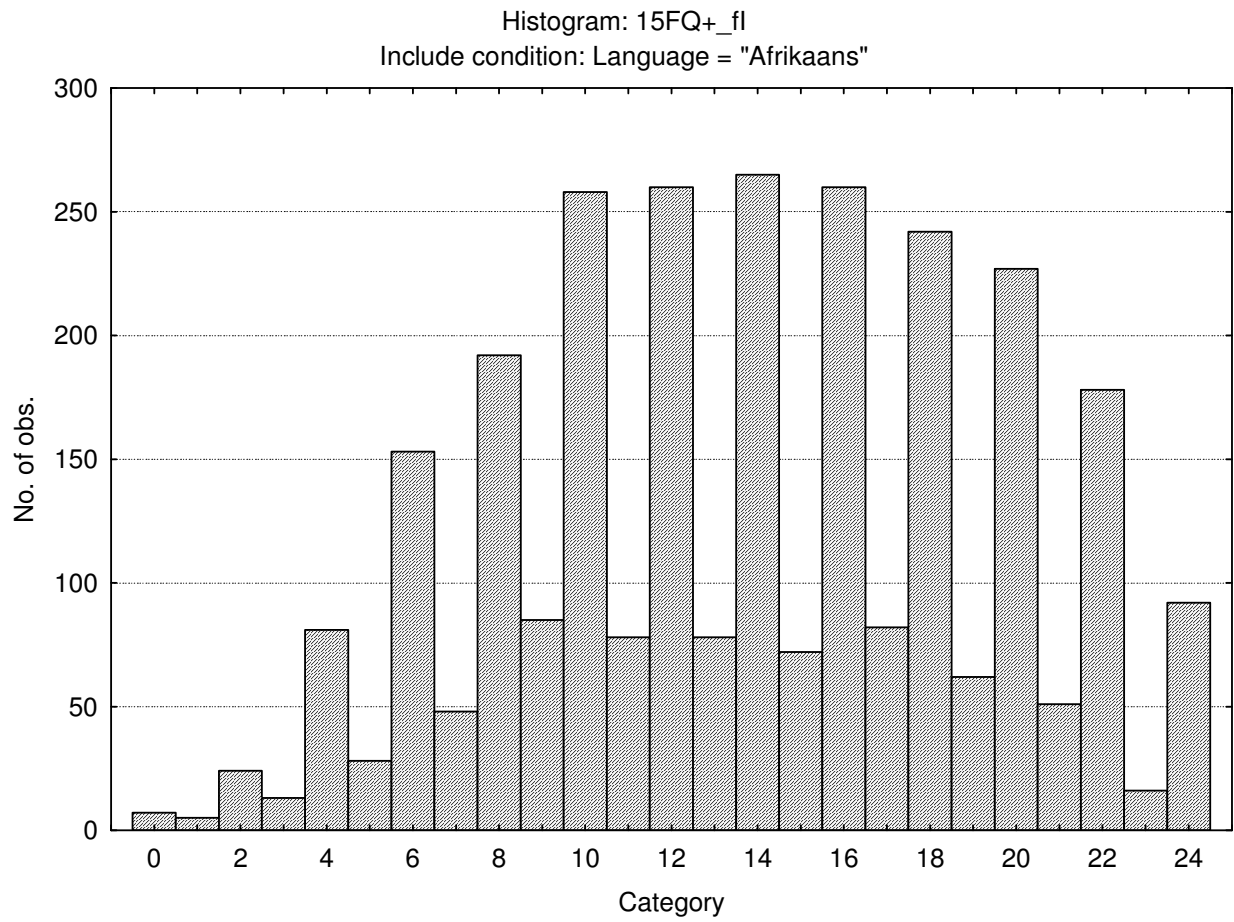
Retiring - Socially Bold



Updated 7 July 2010

N14-11

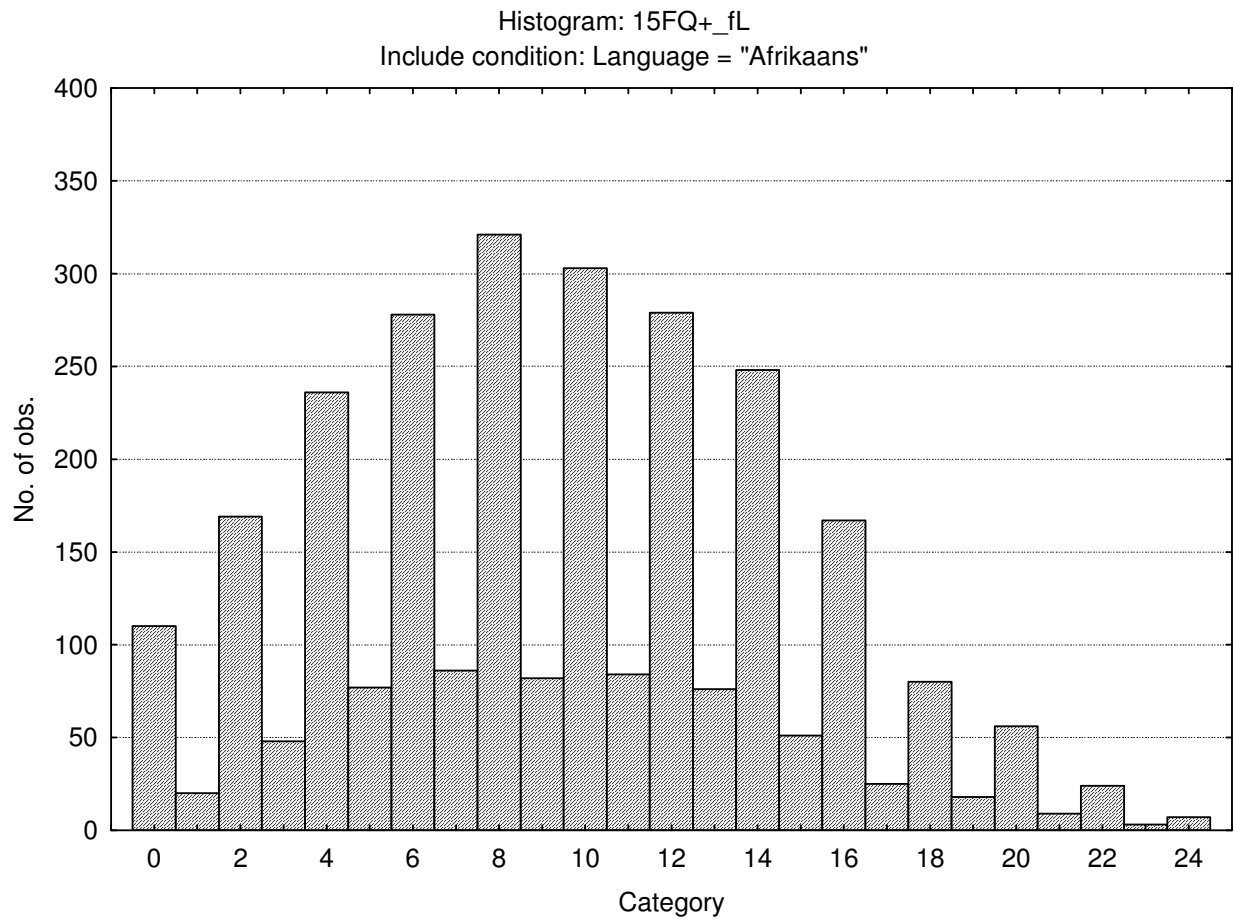
Tough Minded – Tender Minded



Updated 7 July 2010

N14-12

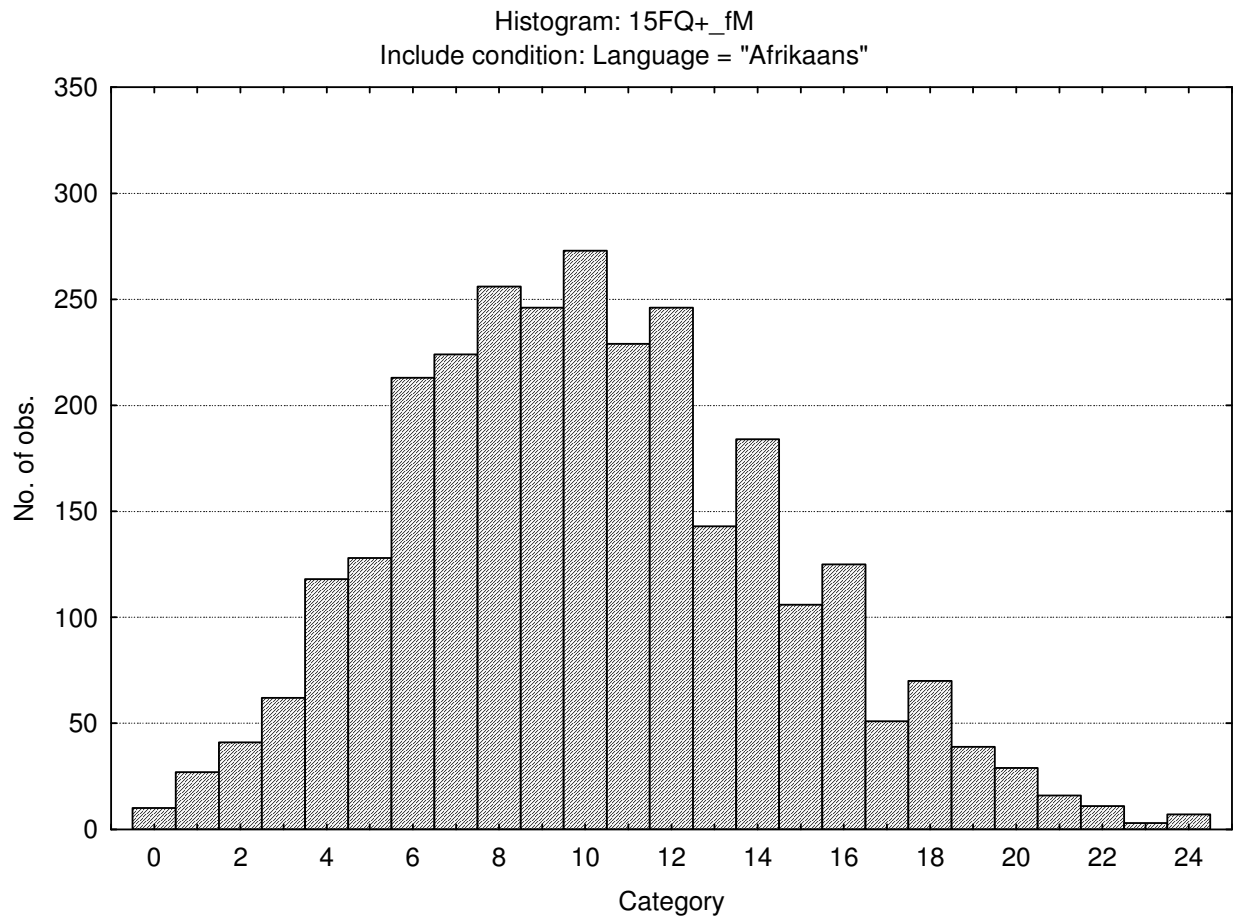
Trusting - Suspicious



Updated 7 July 2010

N14-13

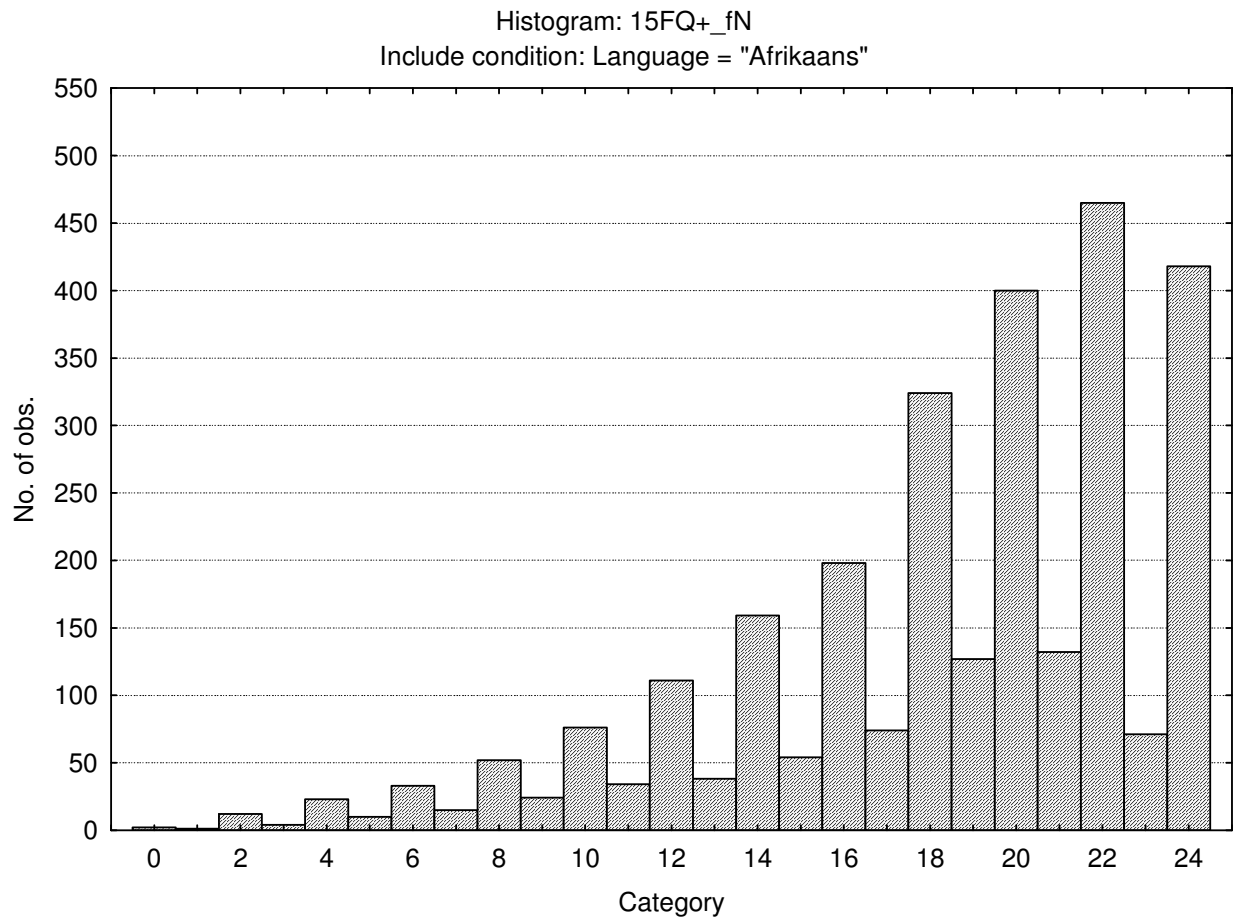
Concrete - Abstract



Updated 7 July 2010

N14-14

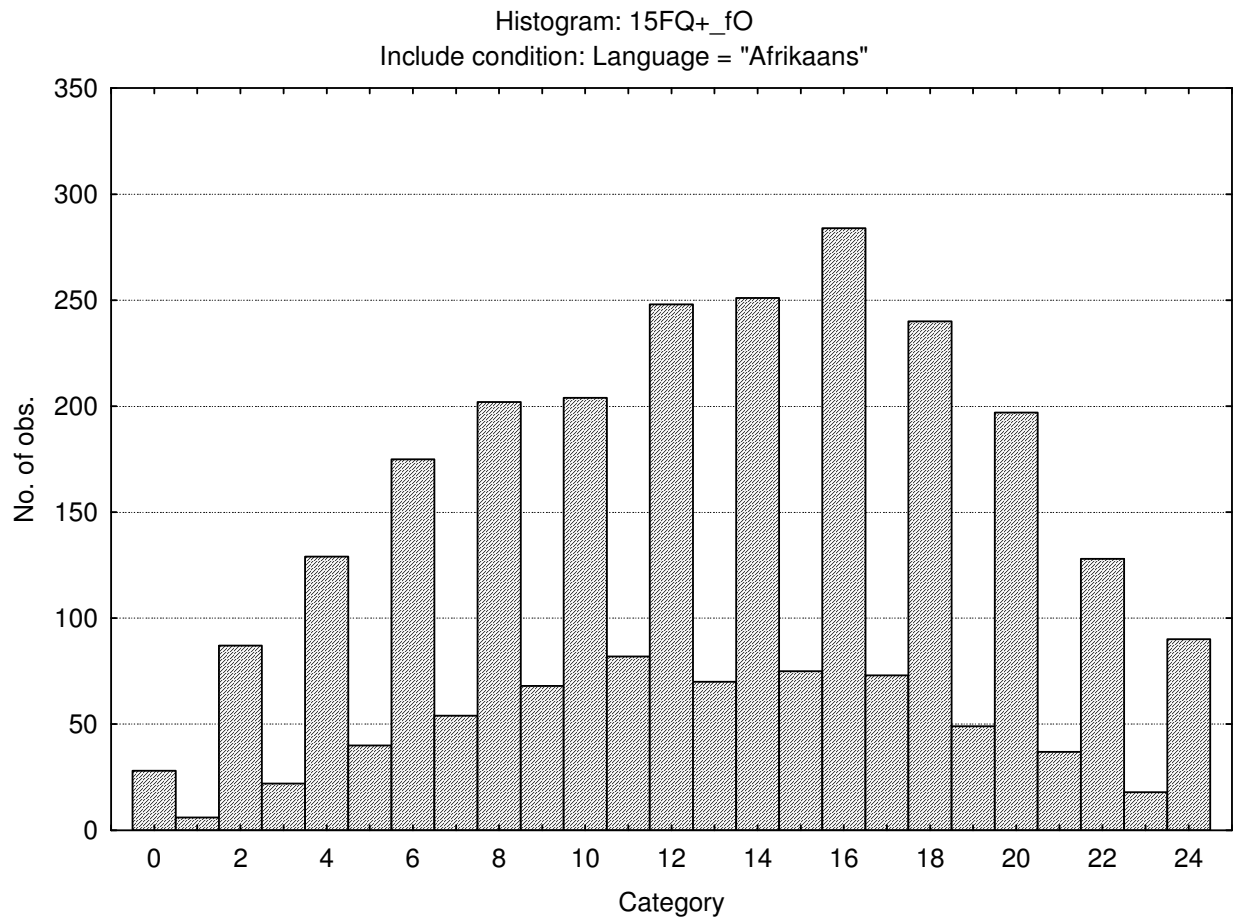
Direct - Restrained



Updated 7 July 2010

N14-15

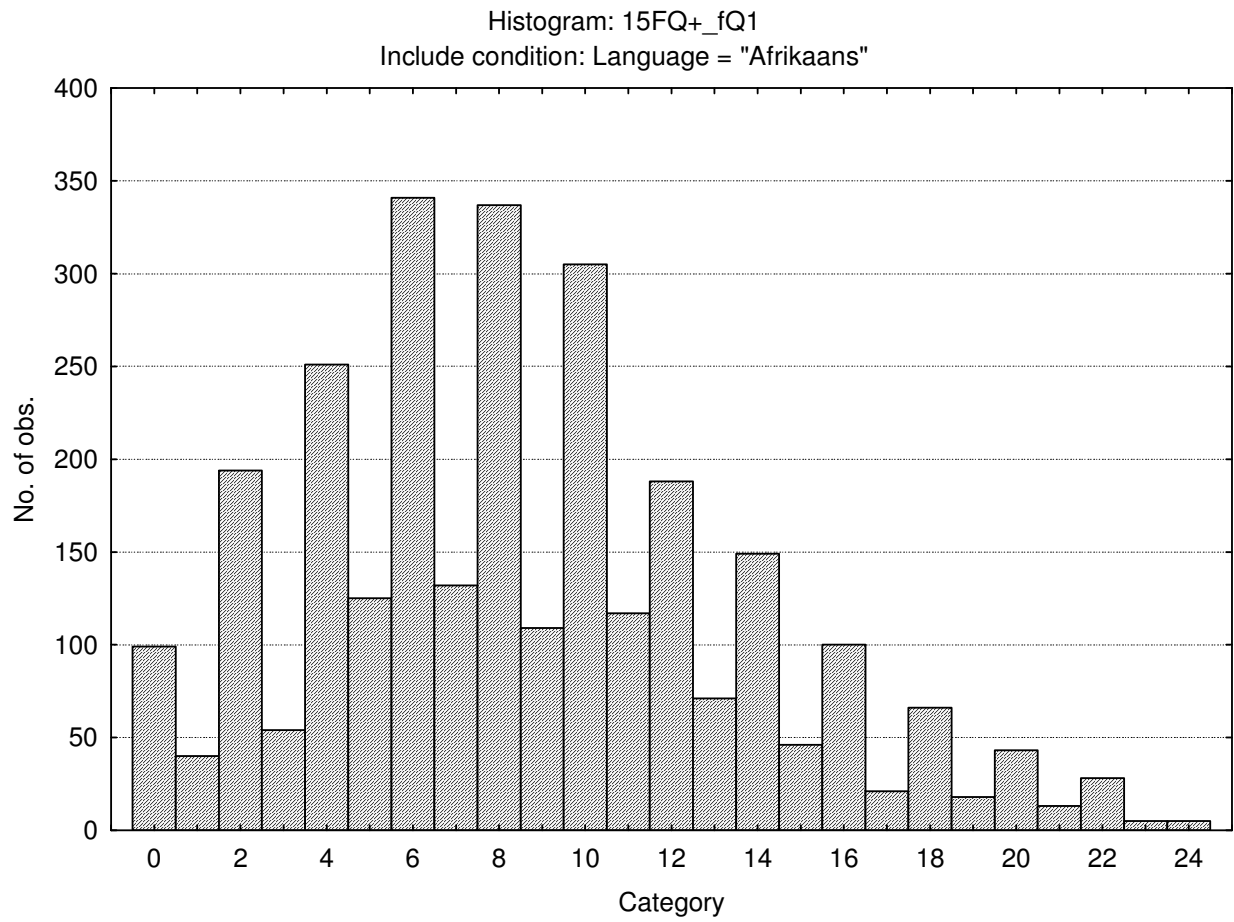
Self Assured – Apprehensive



Updated 7 July 2010

N14-16

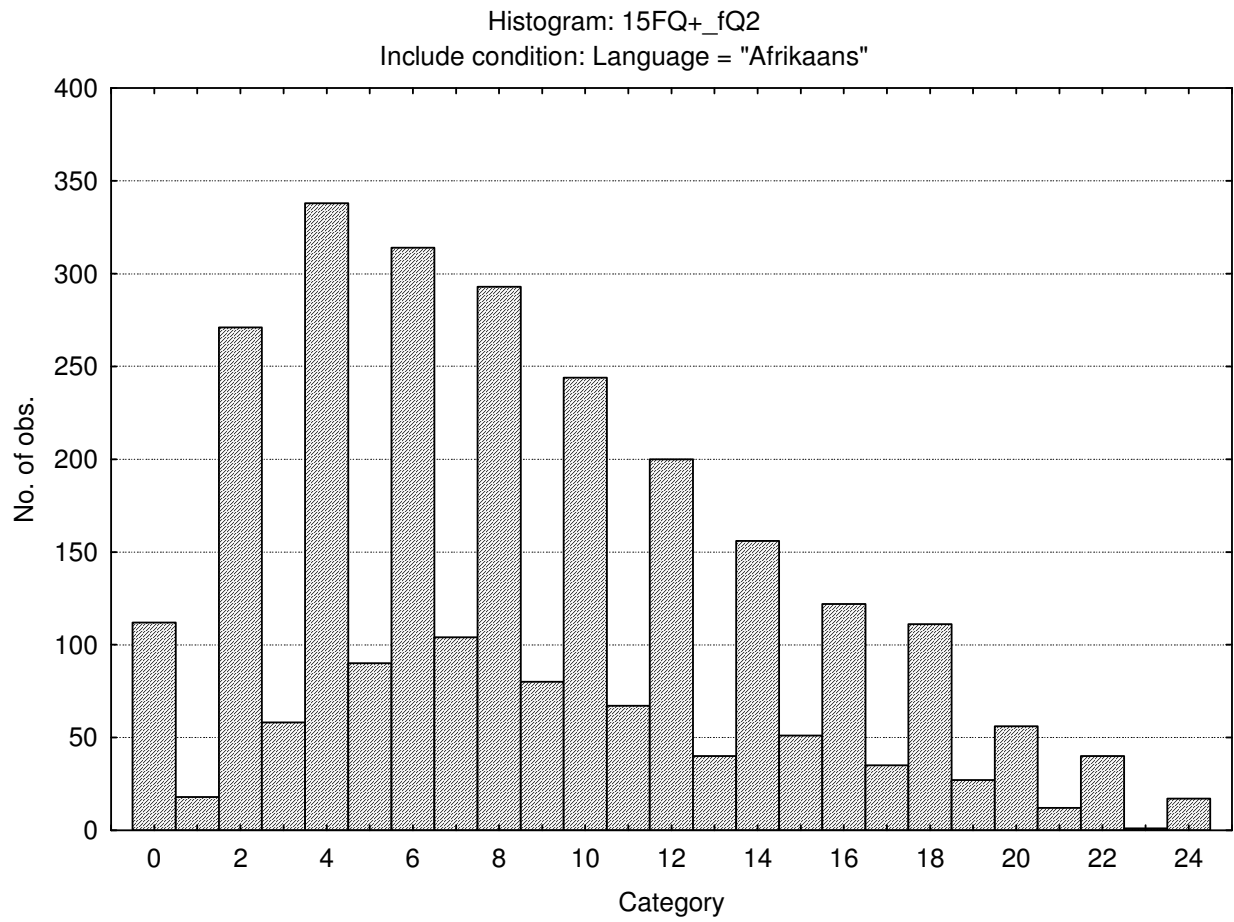
Conventional - Radical



Updated 7 July 2010

N14-17

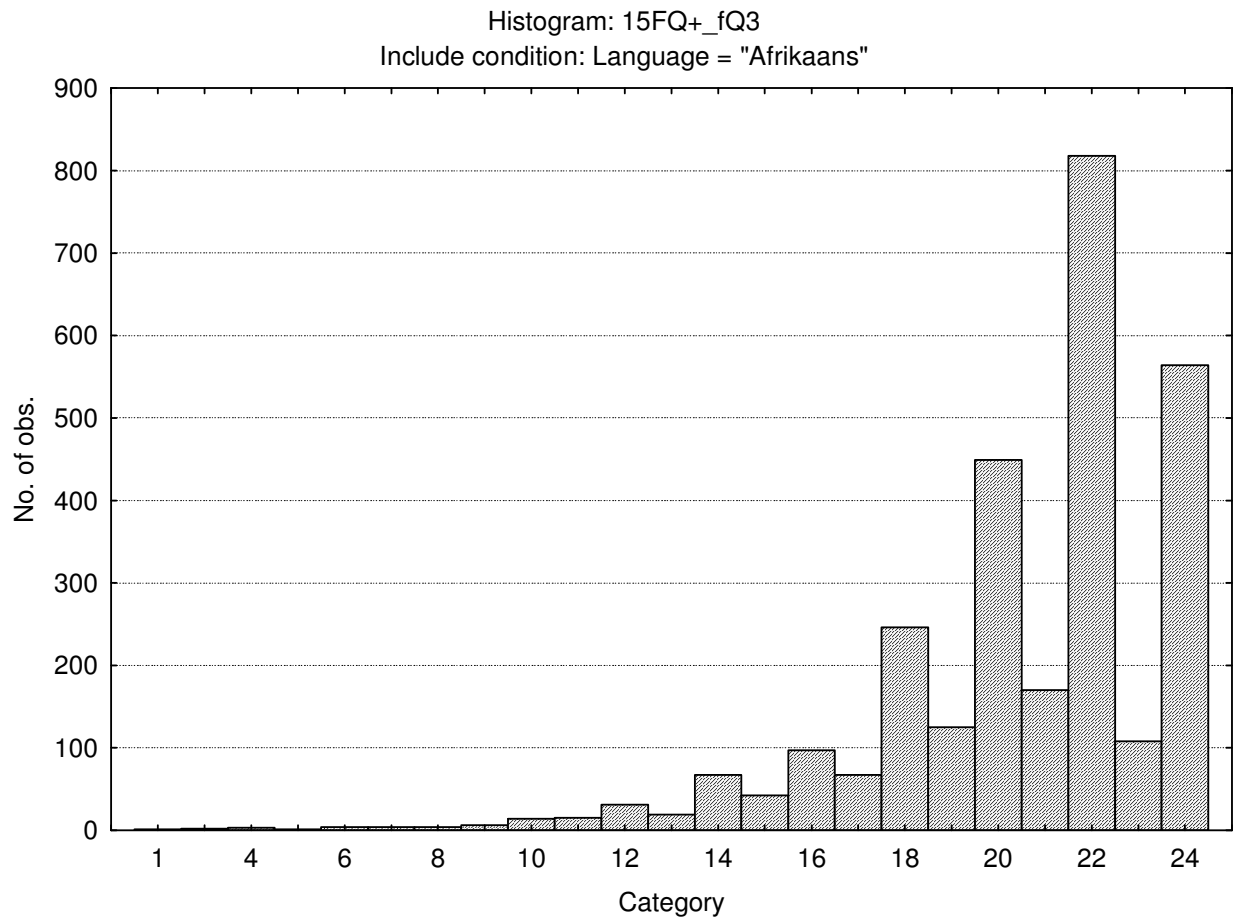
Group Orientated - Self-sufficient



Updated 7 July 2010

N14-18

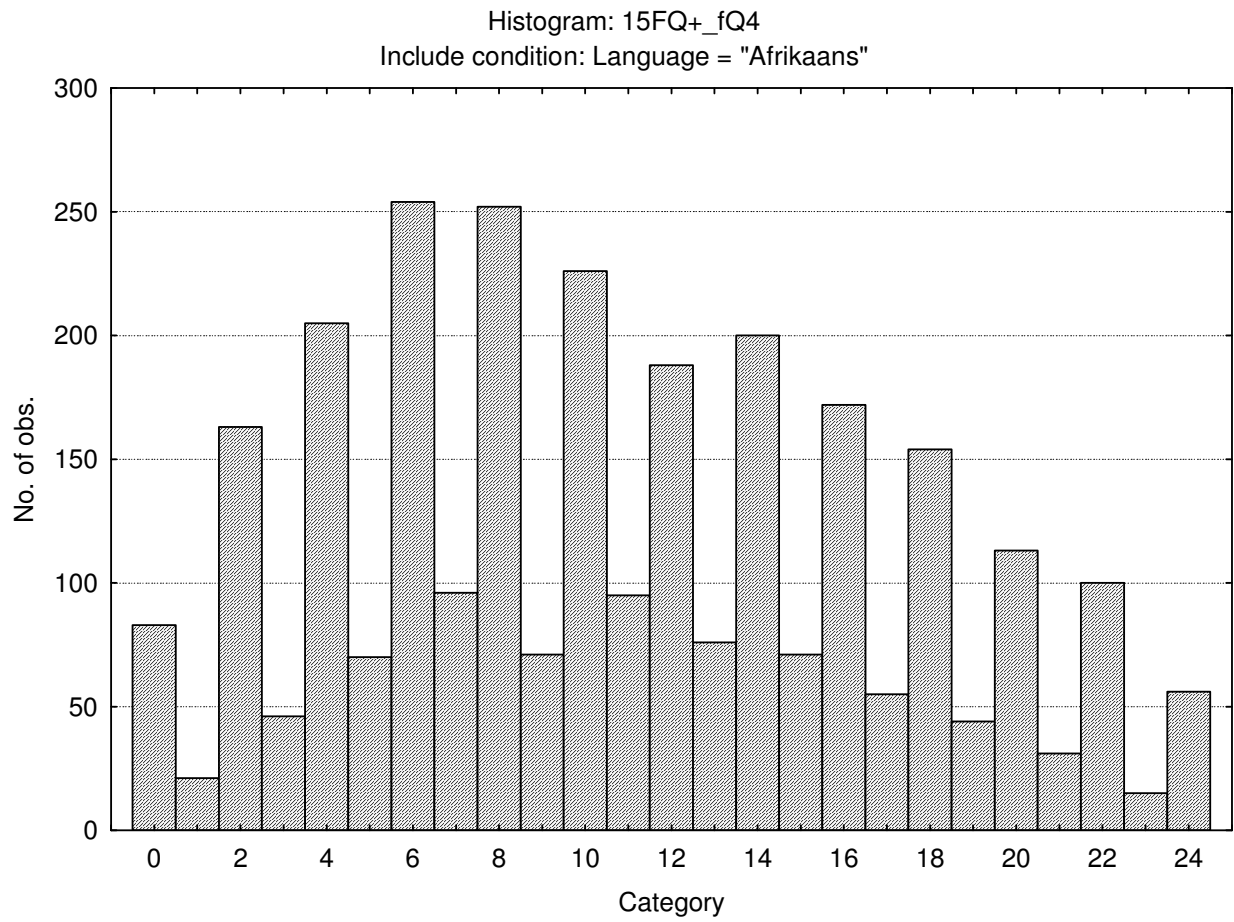
Informal – Self Disciplined



Updated 7 July 2010

N14-19

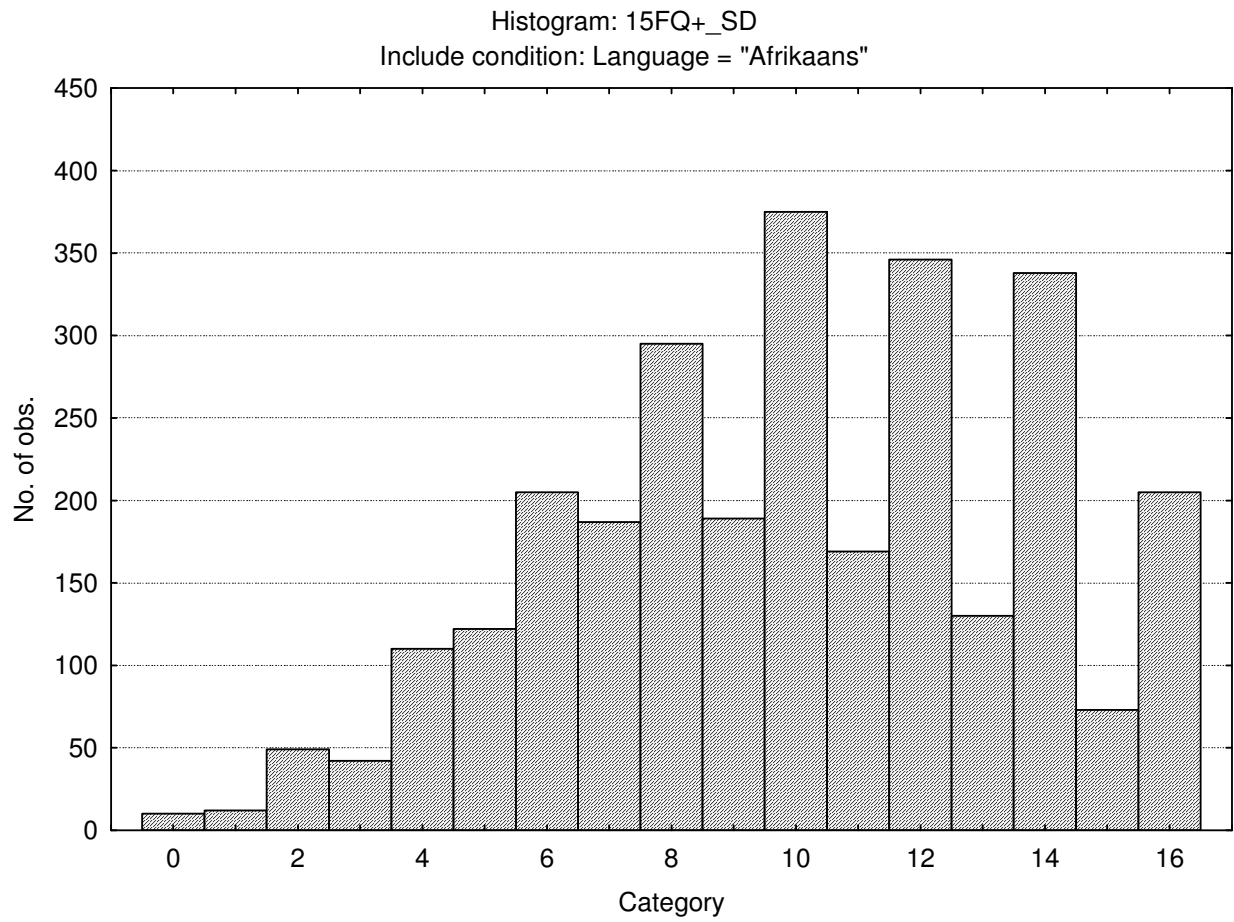
Composed - Tense driven



Updated 7 July 2010

N14-20

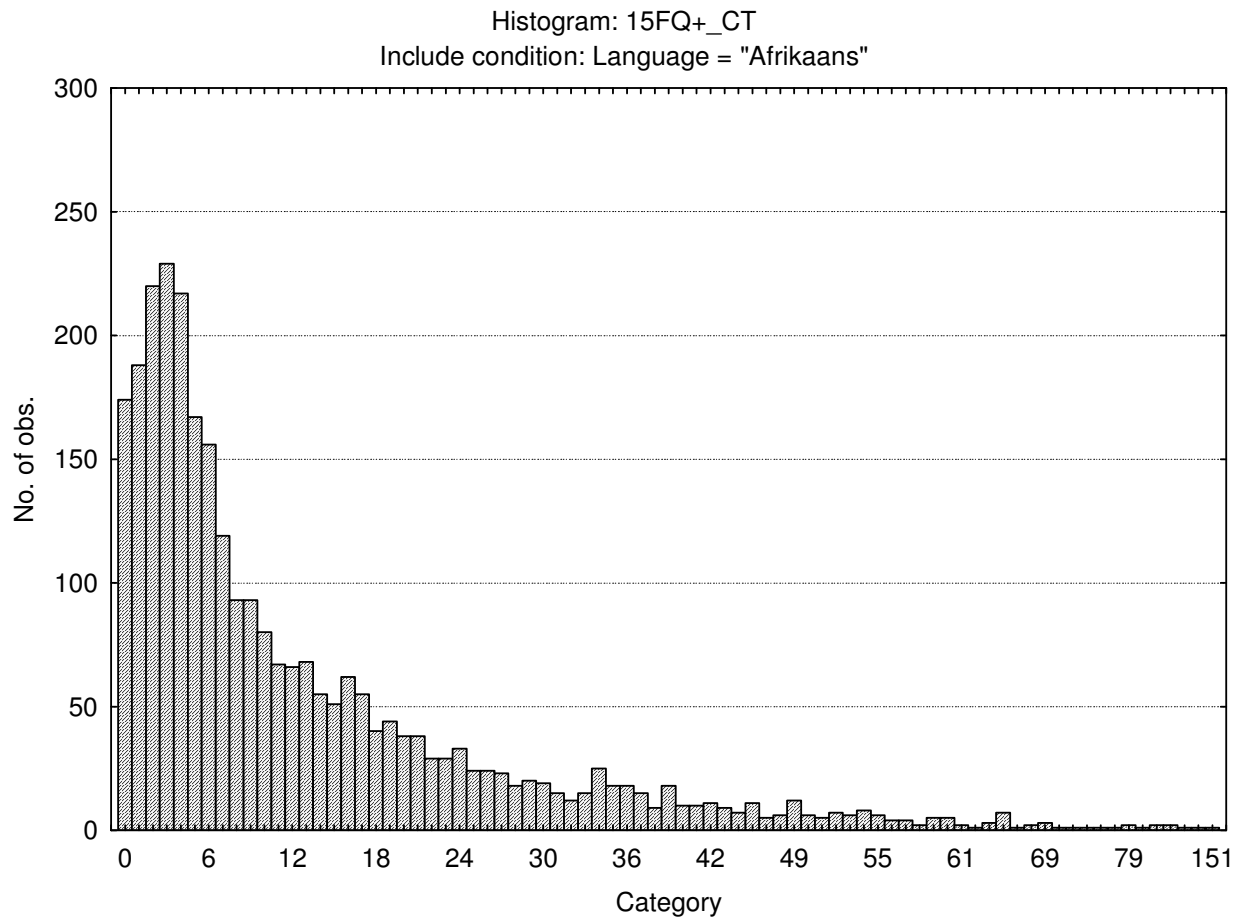
Social Desirability



Updated 7 July 2010

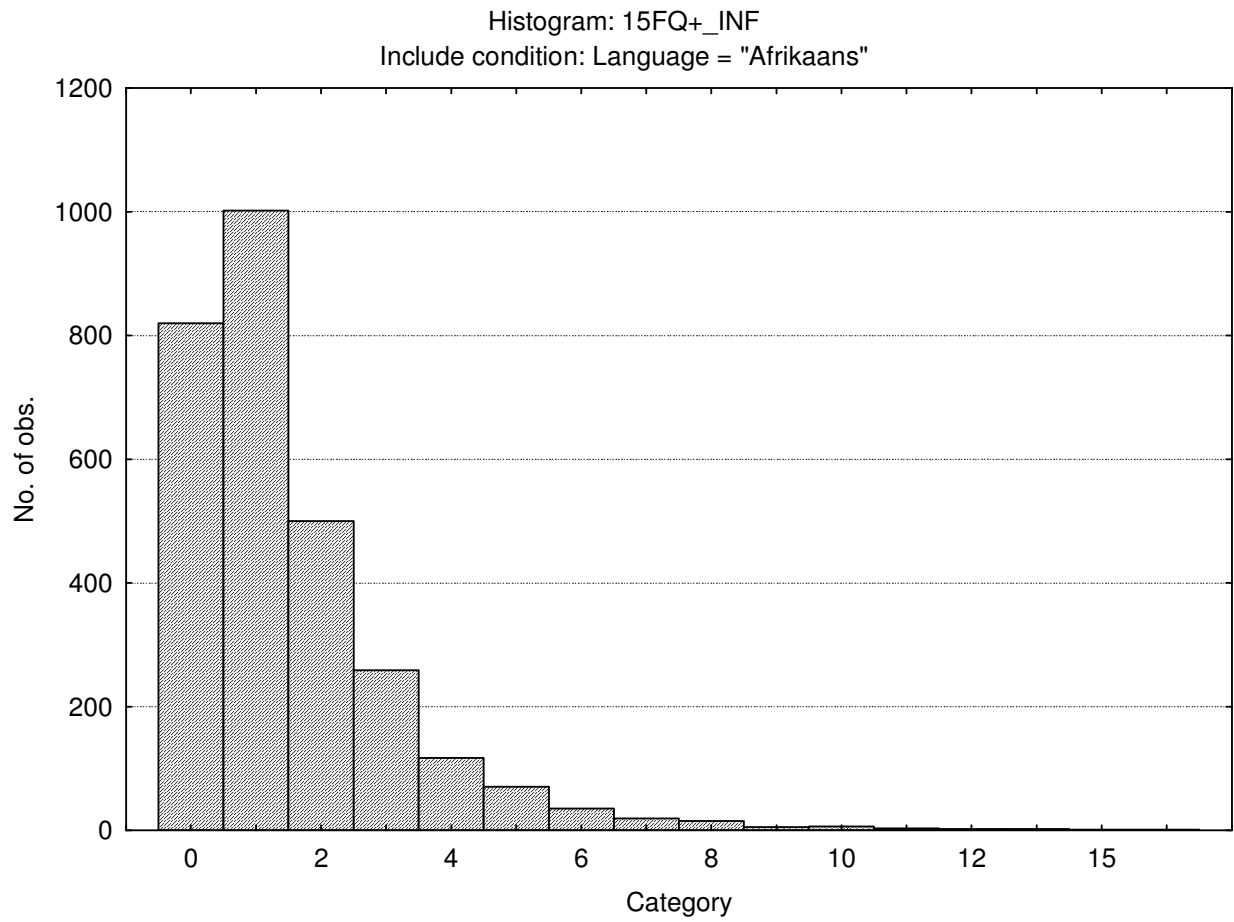
N14-21

Central Tendency



Updated 7 July 2010

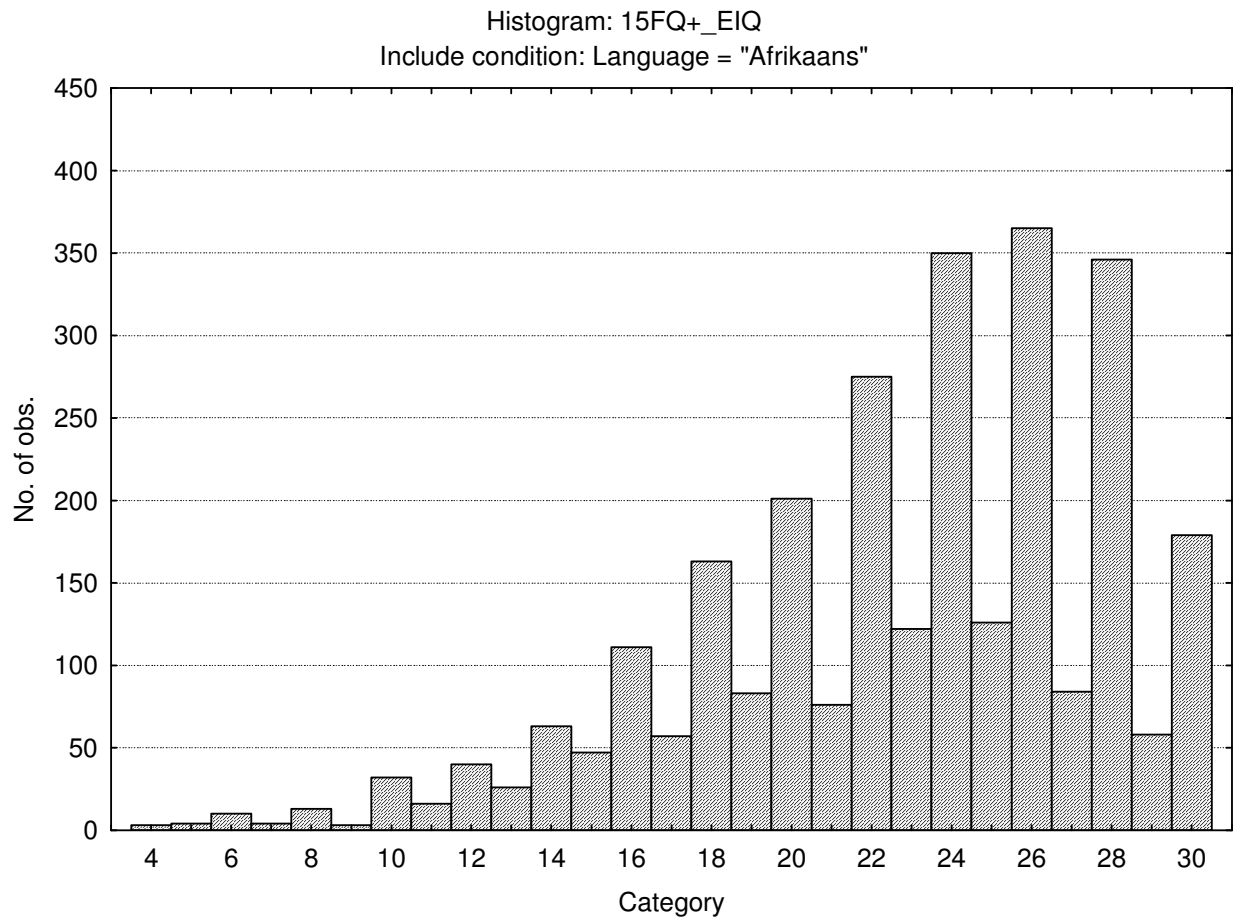
Infrequency



Updated 7 July 2010

N14-23

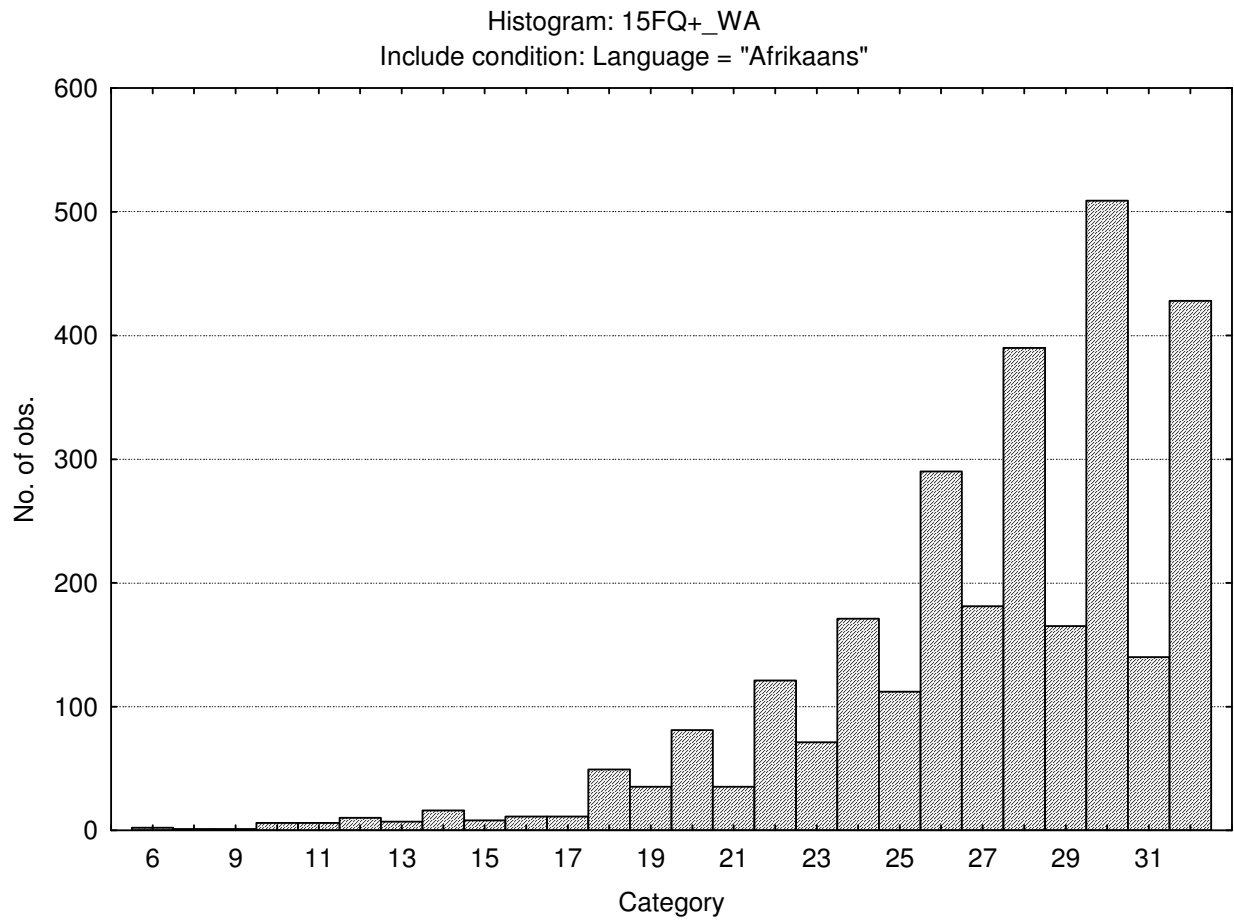
Emotional Intelligence



Updated 7 July 2010

N14-24

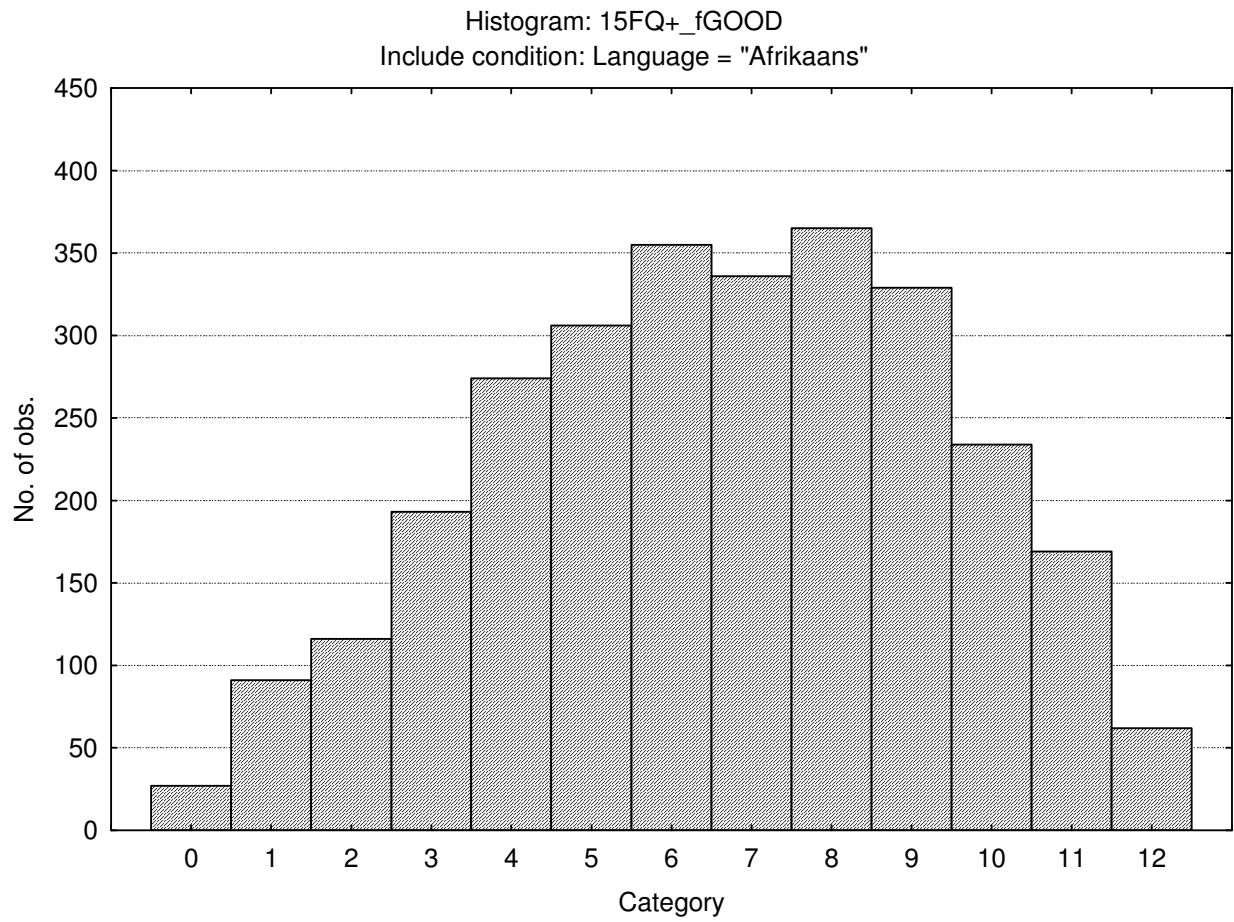
Work Attitude



Updated 7 July 2010

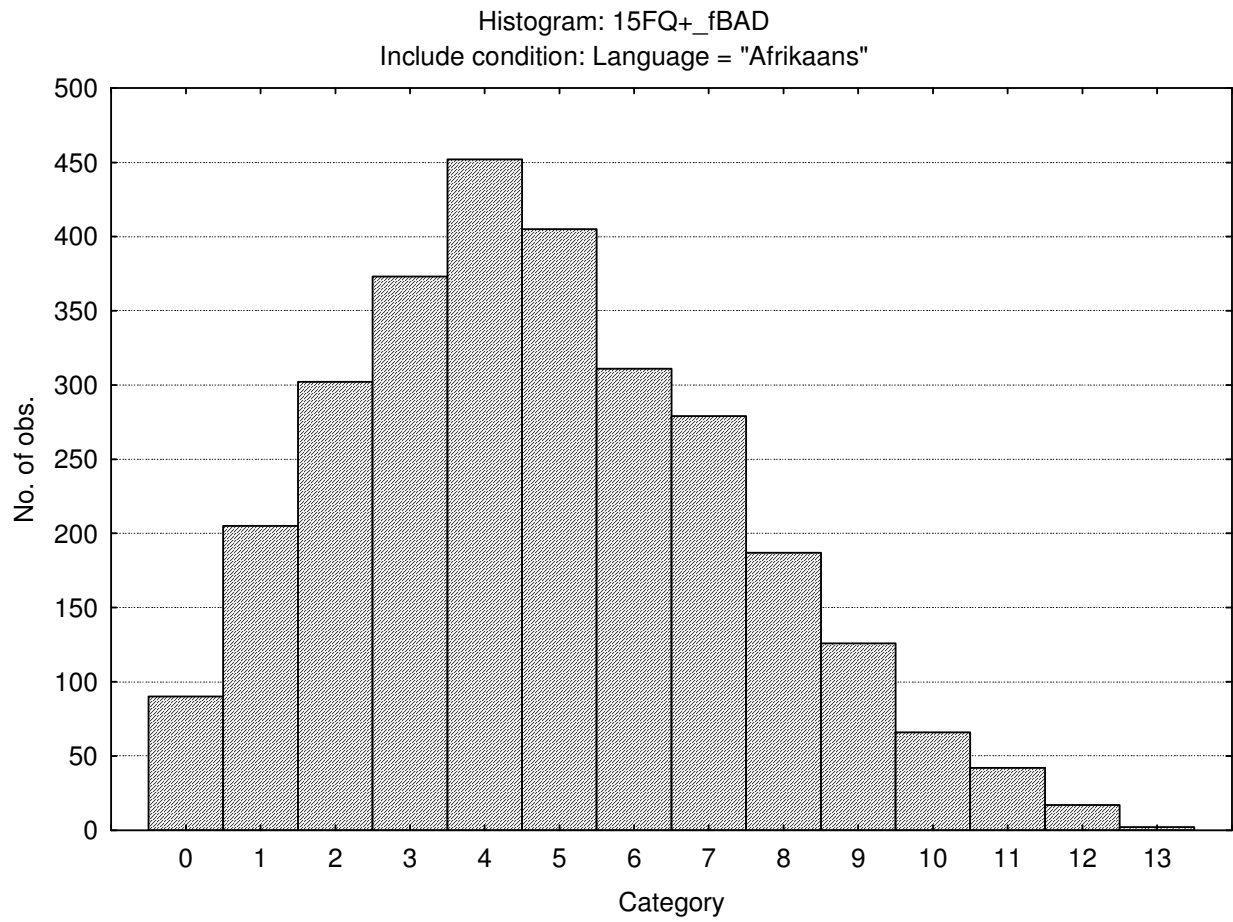
N14-25

Faking Good



Updated 7 July 2010

Faking Bad



Updated 7 July 2010

N14-27

Sten table

	S10_1	S10_2	S10_3	S10_4	S10_5	S10_6	S10_7	S10_8	S10_9	S10_10
15FQ+_fA	2-9	10-11	12-14	15-16	17-18	19-20	21-22	23-24		
15FQ+_B	1-10	11-13	14-15	16-17	18-19	20-21	22-23	24-24		
15FQ+_fC	0-6	7-9	10-11	12-14	15-16	17-19	20-21	22-24		
15FQ+_fE	0-6	7-9	10-11	12-14	15-16	17-18	19-21	22-23	24-24	
15FQ+_fF	0-2	3-5	6-8	9-11	12-13	14-16	17-19	20-22	23-24	
15FQ+_fG	0-9	10-11	12-14	15-16	17-18	19-21	22-23	24-24		
15FQ+_fH	0-1	2-4	5-7	8-10	11-14	15-17	18-20	21-23	24-24	
15FQ+_fI	0-3	4-5	6-8	9-11	12-13	14-16	17-19	20-22	23-24	
15FQ+_fL	0--1	0-1	2-4	5-6	7-9	10-11	12-14	15-17	18-19	20-24
15FQ+_fM	0-1	2-3	4-5	6-7	8-10	11-12	13-14	15-16	17-18	19-24
15FQ+_fN	0-8	9-11	12-13	14-15	16-18	19-20	21-23	24-24		
15FQ+_fO	0-1	2-4	5-7	8-10	11-13	14-15	16-18	19-21	22-24	
15FQ+_fQ1	0--1	0-1	2-3	4-6	7-8	9-11	12-13	14-16	17-18	19-24
15FQ+_fQ2	0--1	0-0	1-3	4-5	6-8	9-11	12-14	15-17	18-19	20-24
15FQ+_fQ3	1-14	15-15	16-17	18-18	19-20	21-22	23-23	24-24		
15FQ+_fQ4	0--1	0-1	2-4	5-7	8-10	11-13	14-16	17-20	21-23	24-24
15FQ+_SD	0-2	3-4	5-6	7-8	9-9	10-11	12-13	14-15	16-16	
15FQ+_CT	0--1	0-0	1-1	2-5	6-12	13-19	20-27	28-34	35-41	42-151
15FQ+_INF	0--1	0-0	1-1	2-2	3-3	4-4	5-5	6-6	7-7	8-18
15FQ+_EIQ	4-12	13-15	16-17	18-20	21-22	23-25	26-27	28-30		
15FQ+_WA	6-18	19-20	21-22	23-25	26-27	28-29	30-31	32-32		
15FQ+_fGOOD	0-1	2-2	3-3	4-5	6-6	7-7	8-9	10-10	11-12	

Updated 7 July 2010