

Norm group: South Africans, race African, updated 2010

Sample composition

The sample consisted of 5803 South Africans of African race (Black) tested in the period up to February 2010

Gender composition of the sample

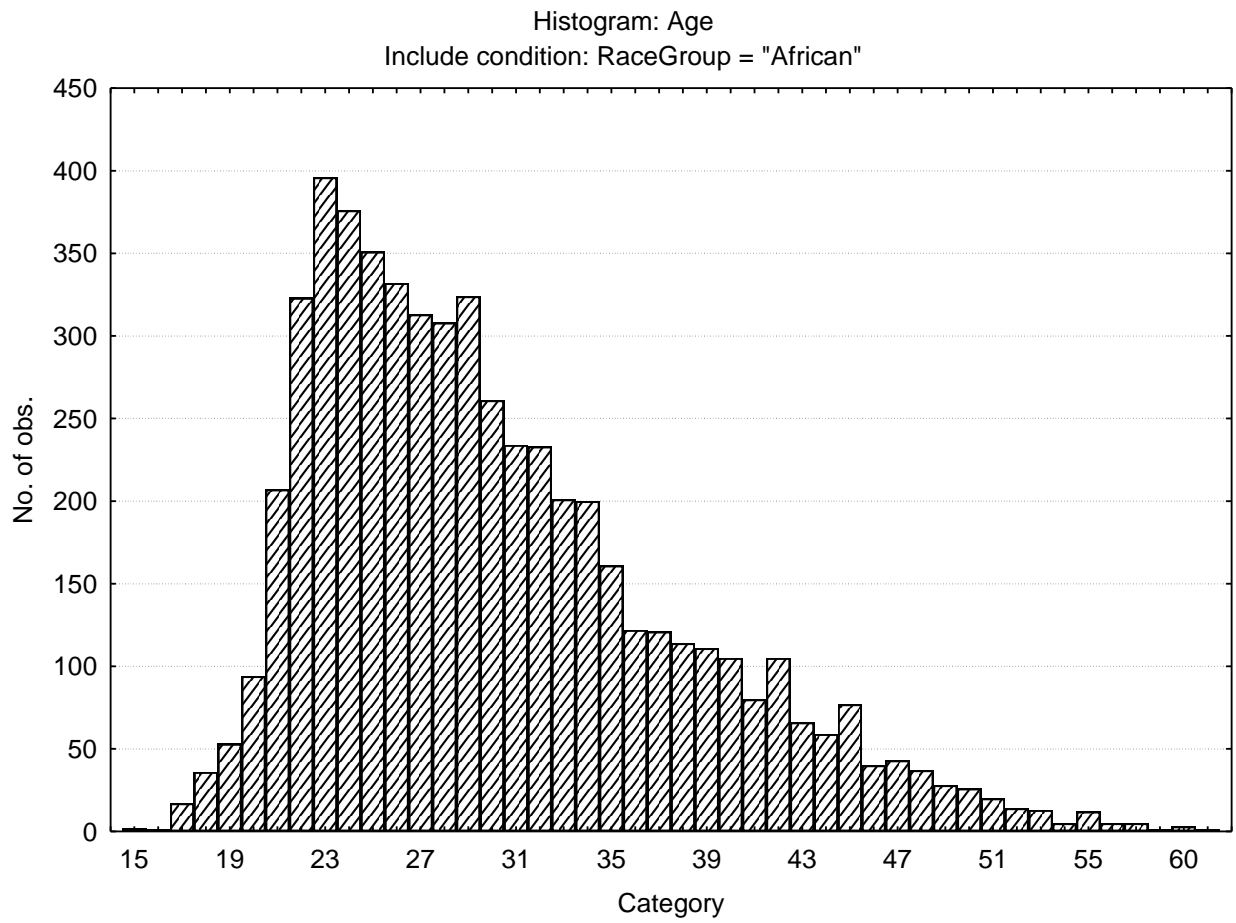
| Category | Frequency table: Sex | | | |
|----------|----------------------|------------------|----------|--------------------|
| | Count | Cumulative Count | Percent | Cumulative Percent |
| F | 2267 | 2267 | 39.06600 | 39.0660 |
| M | 3507 | 5774 | 60.43426 | 99.5003 |
| Missing | 29 | 5803 | 0.49974 | 100.0000 |

Educational composition of the sample

| Category | Frequency table: Education | | | |
|---------------------|----------------------------|------------------|----------|--------------------|
| | Count | Cumulative Count | Percent | Cumulative Percent |
| Grade 12 | 1284 | 1284 | 22.12649 | 22.1265 |
| Degree | 979 | 2263 | 16.87058 | 38.9971 |
| Post Graduate | 767 | 3030 | 13.21730 | 52.2144 |
| Technikon | 937 | 3967 | 16.14682 | 68.3612 |
| University diploma | 584 | 4551 | 10.06376 | 78.4250 |
| Grade 10 or 11 | 114 | 4665 | 1.96450 | 80.3895 |
| Vocational Training | 223 | 4888 | 3.84284 | 84.2323 |
| Diploma | 143 | 5031 | 2.46424 | 86.6965 |
| Certificate | 112 | 5143 | 1.93004 | 88.6266 |
| Missing | 660 | 5803 | 11.37343 | 100.0000 |

Age composition of the sample

| Variable | Descriptive Statistics | | | | | |
|----------|------------------------|----------|----------|----------|------|------------------|
| | Mean | Std.Dev | Minimum | Maximum | N | No.cases Missing |
| Age | 30.12793 | 7.593987 | 15.00000 | 62.00000 | 5636 | 167 |

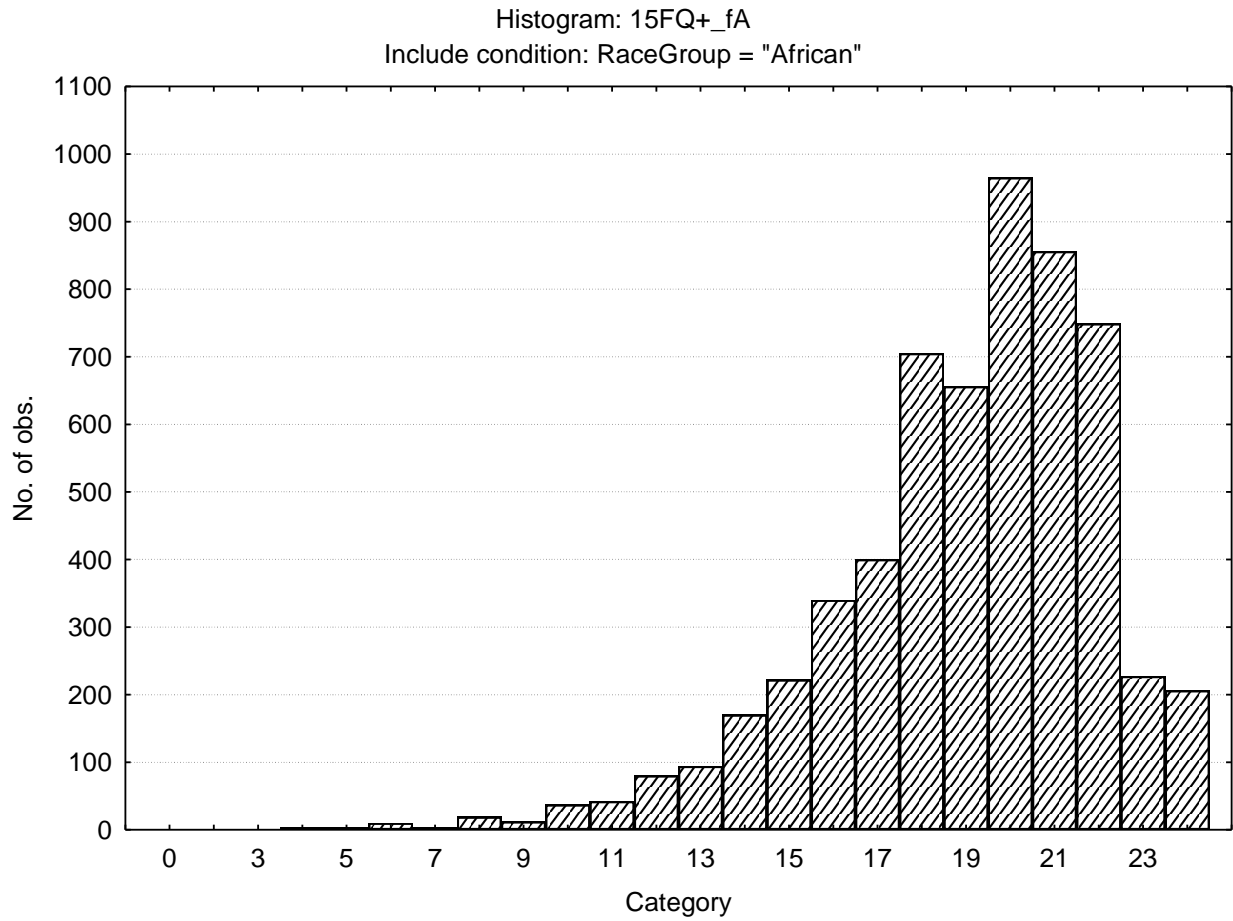


Descriptive statistics on 15FQPlus scales

| Variable | | Descriptive Statistics | | | | | |
|-------------|--|------------------------|----------|----------|----------|------|------------------|
| | | Mean | Std.Dev | Minimum | Maximum | N | No.cases Missing |
| 15FQ+_fA | <i>Distant aloof - empathic</i> | 19.02740 | 3.05168 | 0.000000 | 24.0000 | 5803 | 0 |
| 15FQ+_B | <i>Intellectance</i> | 19.15888 | 3.88213 | 1.000000 | 24.0000 | 5803 | 0 |
| 15FQ+_fC | <i>Affected by feelings - emotionally stable</i> | 17.40238 | 4.38711 | 1.000000 | 24.0000 | 5803 | 0 |
| 15FQ+_fE | <i>Accommodating - Dominant</i> | 16.40065 | 3.82506 | 0.000000 | 24.0000 | 5803 | 0 |
| 15FQ+_fF | <i>Sober serious - Enthusiastic</i> | 14.24263 | 5.29128 | 0.000000 | 24.0000 | 5803 | 0 |
| 15FQ+_fG | <i>Expedient - Conscientious</i> | 19.93986 | 3.86875 | 0.000000 | 24.0000 | 5803 | 0 |
| 15FQ+_fH | <i>Retiring - Socially bold</i> | 16.46321 | 5.28757 | 0.000000 | 24.0000 | 5803 | 0 |
| 15FQ+_fI | <i>Tough Minded - Tender minded</i> | 14.65242 | 4.69541 | 0.000000 | 24.0000 | 5803 | 0 |
| 15FQ+_fL | <i>Trusting - Suspicious</i> | 10.74289 | 4.53270 | 0.000000 | 24.0000 | 5803 | 0 |
| 15FQ+_fM | <i>Concrete - Abstract</i> | 10.36309 | 3.38157 | 0.000000 | 24.0000 | 5803 | 0 |
| 15FQ+_fN | <i>Direct - Restrained</i> | 20.31432 | 3.18483 | 1.000000 | 24.0000 | 5803 | 0 |
| 15FQ+_fO | <i>Self-assured - Apprehensive</i> | 12.00345 | 4.82435 | 0.000000 | 24.0000 | 5803 | 0 |
| 15FQ+_fQ1 | <i>Conventional - Radical</i> | 9.13527 | 4.25195 | 0.000000 | 24.0000 | 5803 | 0 |
| 15FQ+_fQ2 | <i>Group - orientated - Self-sufficient</i> | 6.97622 | 4.33930 | 0.000000 | 24.0000 | 5803 | 0 |
| 15FQ+_fQ3 | <i>Informal- self disciplined</i> | 20.46752 | 2.73034 | 0.000000 | 24.0000 | 5803 | 0 |
| 15FQ+_fQ4 | <i>Composed - tense driven</i> | 7.73186 | 4.42788 | 0.000000 | 24.0000 | 5803 | 0 |
| 15FQ+_SD | <i>Social desirability</i> | 11.46528 | 3.47289 | 0.000000 | 16.0000 | 5803 | 0 |
| 15FQ+_CT | <i>Central Tendency</i> | 11.46045 | 13.35514 | 0.000000 | 128.0000 | 5803 | 0 |
| 15FQ+_INF | <i>Infrequency</i> | 1.51491 | 1.72544 | 0.000000 | 16.0000 | 5803 | 0 |
| 15FQ+_EIQ | <i>Derived score: Emotional Intelligence</i> | 24.11425 | 3.75979 | 0.000000 | 30.0000 | 5803 | 0 |
| 15FQ+_WA | <i>Derived score: Work attitude</i> | 27.24125 | 3.82760 | 0.000000 | 32.0000 | 5803 | 0 |
| 15FQ+_fGOOD | <i>Faking good</i> | 7.91470 | 2.33725 | 0.000000 | 12.0000 | 5803 | 0 |
| 15FQ+_fBAD | <i>Faking bad</i> | 4.35171 | 2.21443 | 0.000000 | 12.0000 | 5803 | 0 |

Frequency distributions of 15FQPlus scales

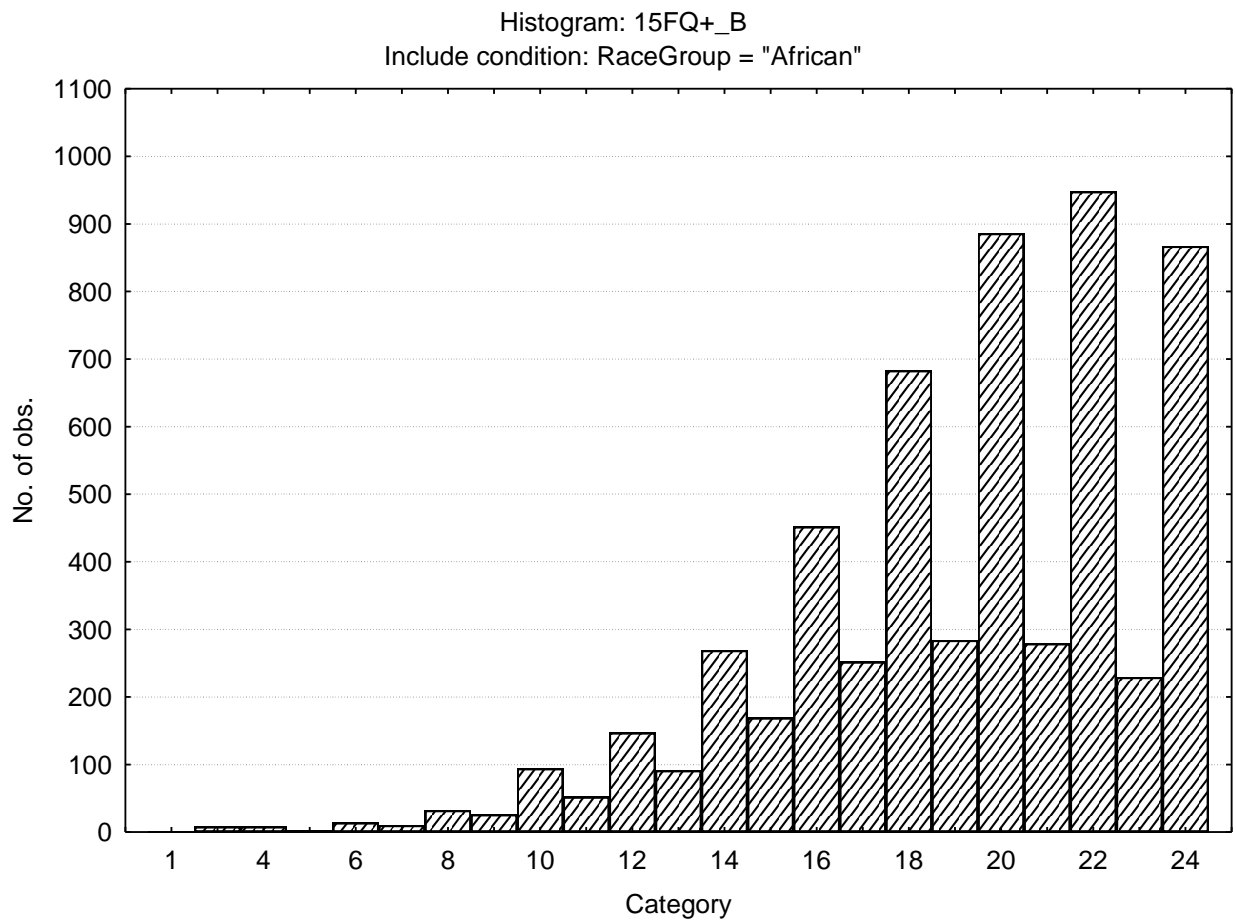
Distant Aloof-Empathic



N15-4

Updated 13 July 2010

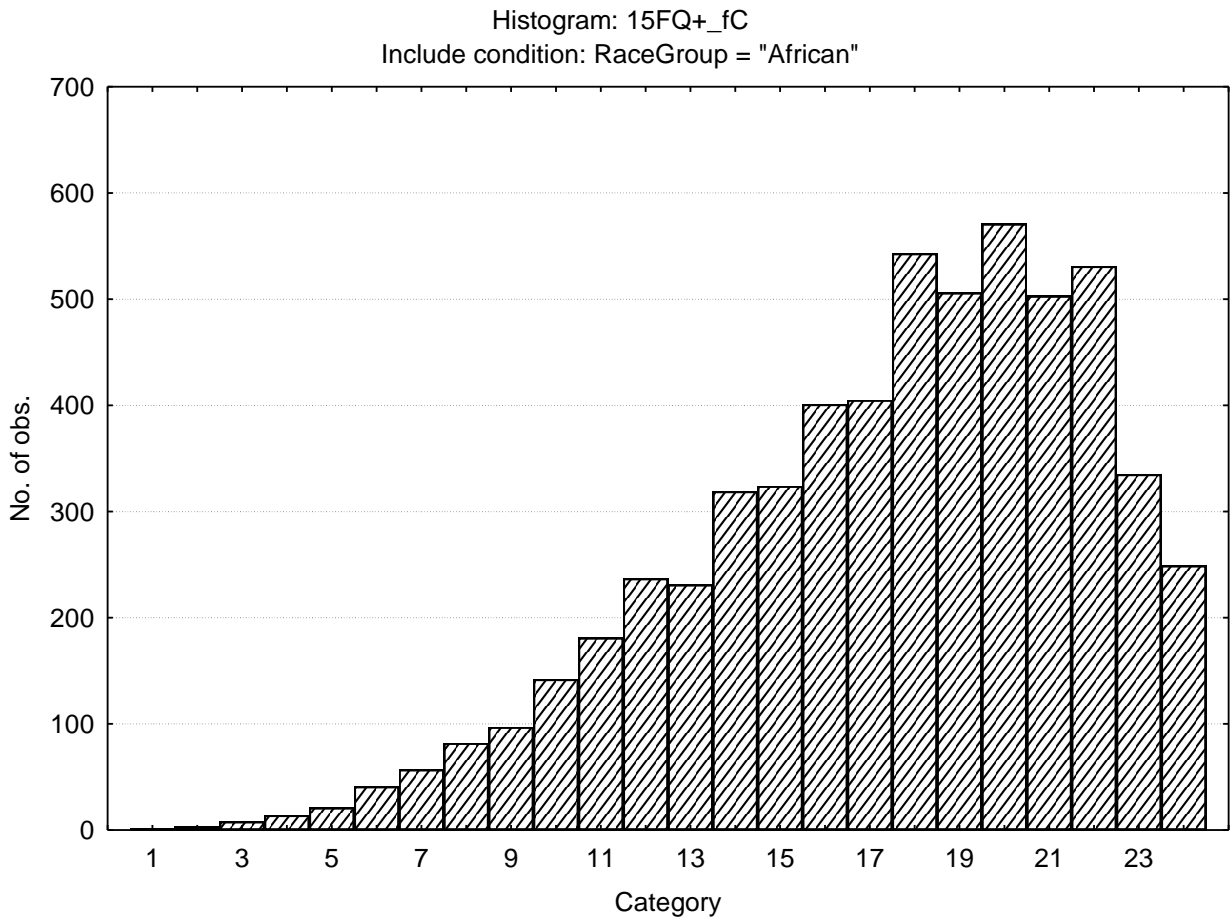
Intellectance



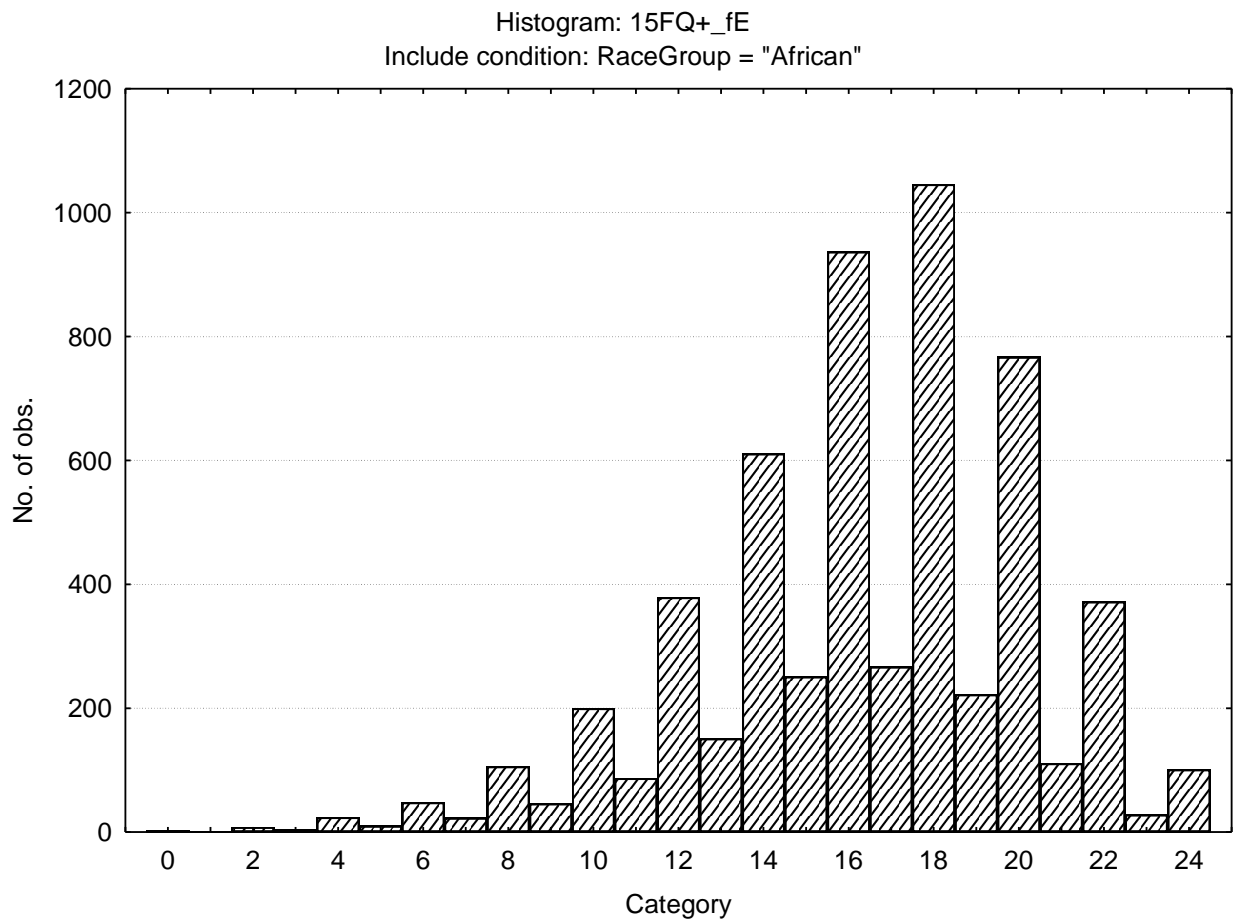
N15-5

Updated 13 July 2010

Affected by feelings - Emotionally stable



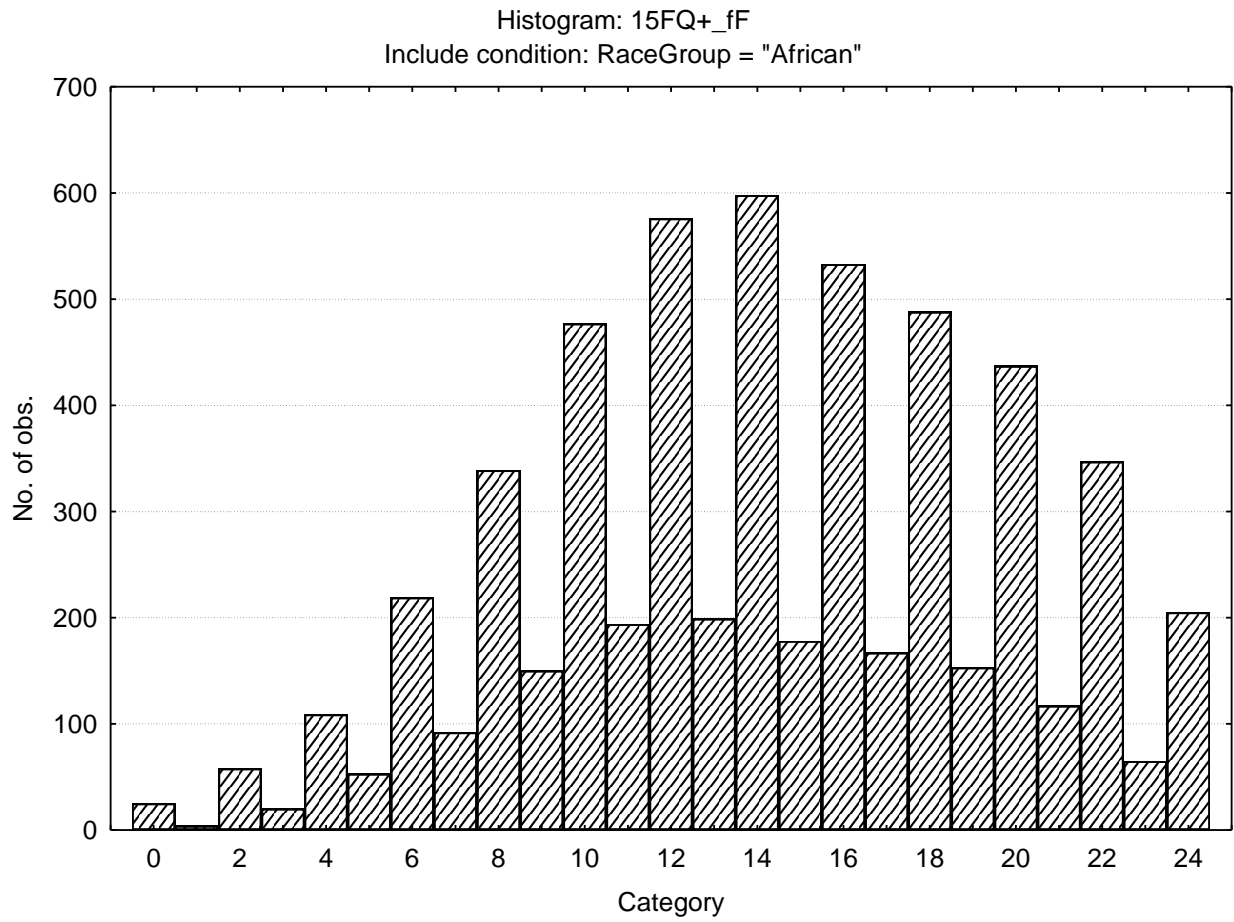
Accommodating - Dominant



N15-7

Updated 13 July 2010

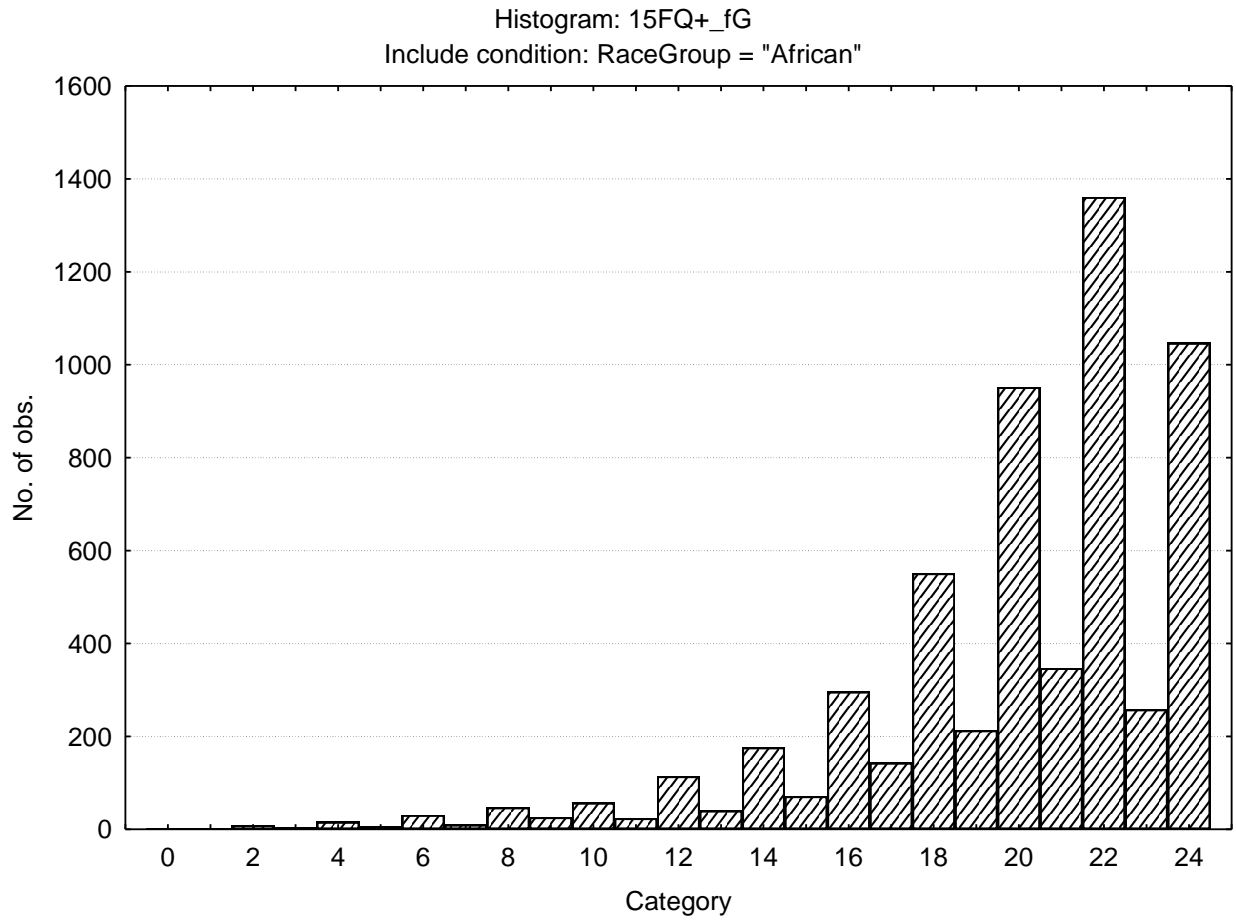
Sober serious - Enthusiastic



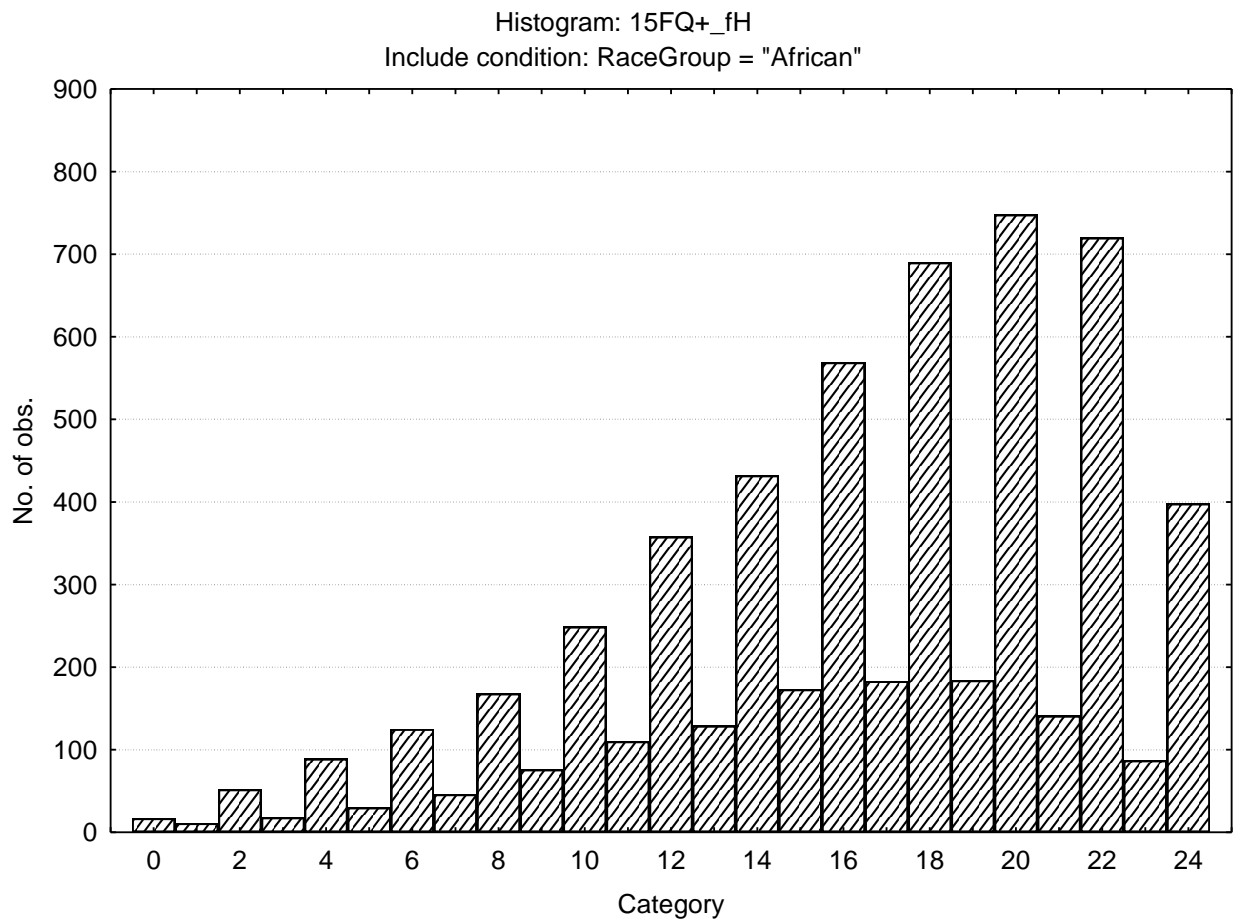
N15-8

Updated 13 July 2010

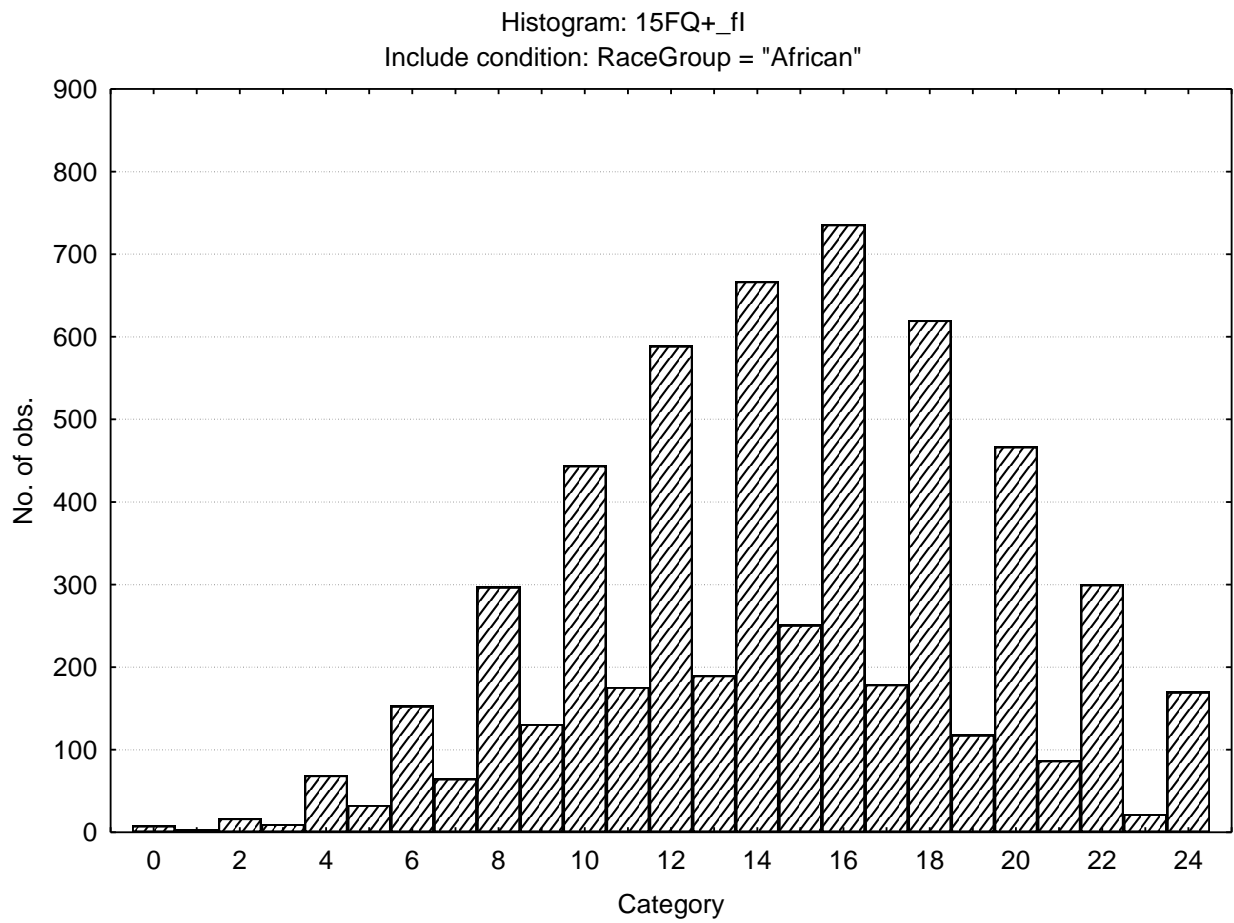
Expedient - Conscientious



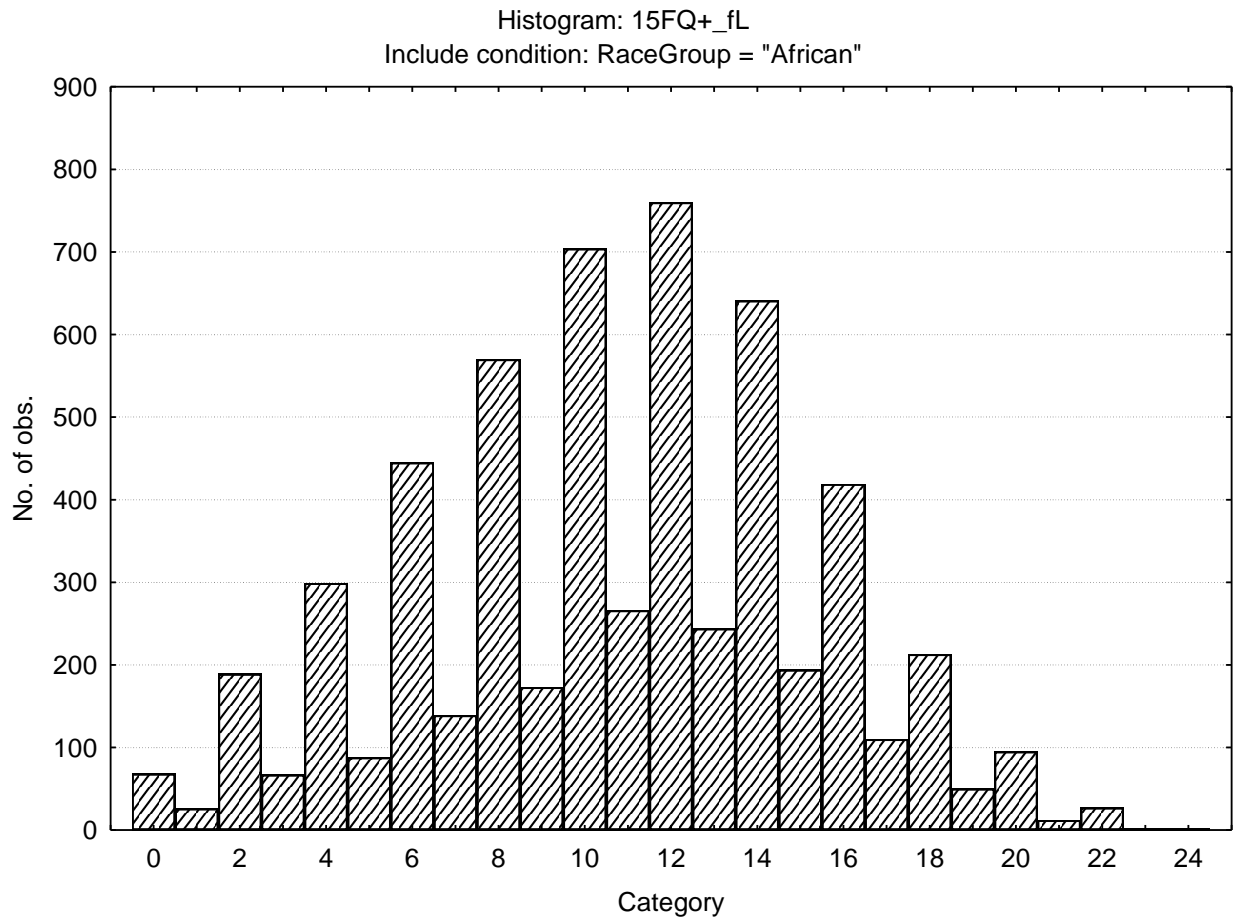
Retiring - Socially bold



Tough minded - Tended minded



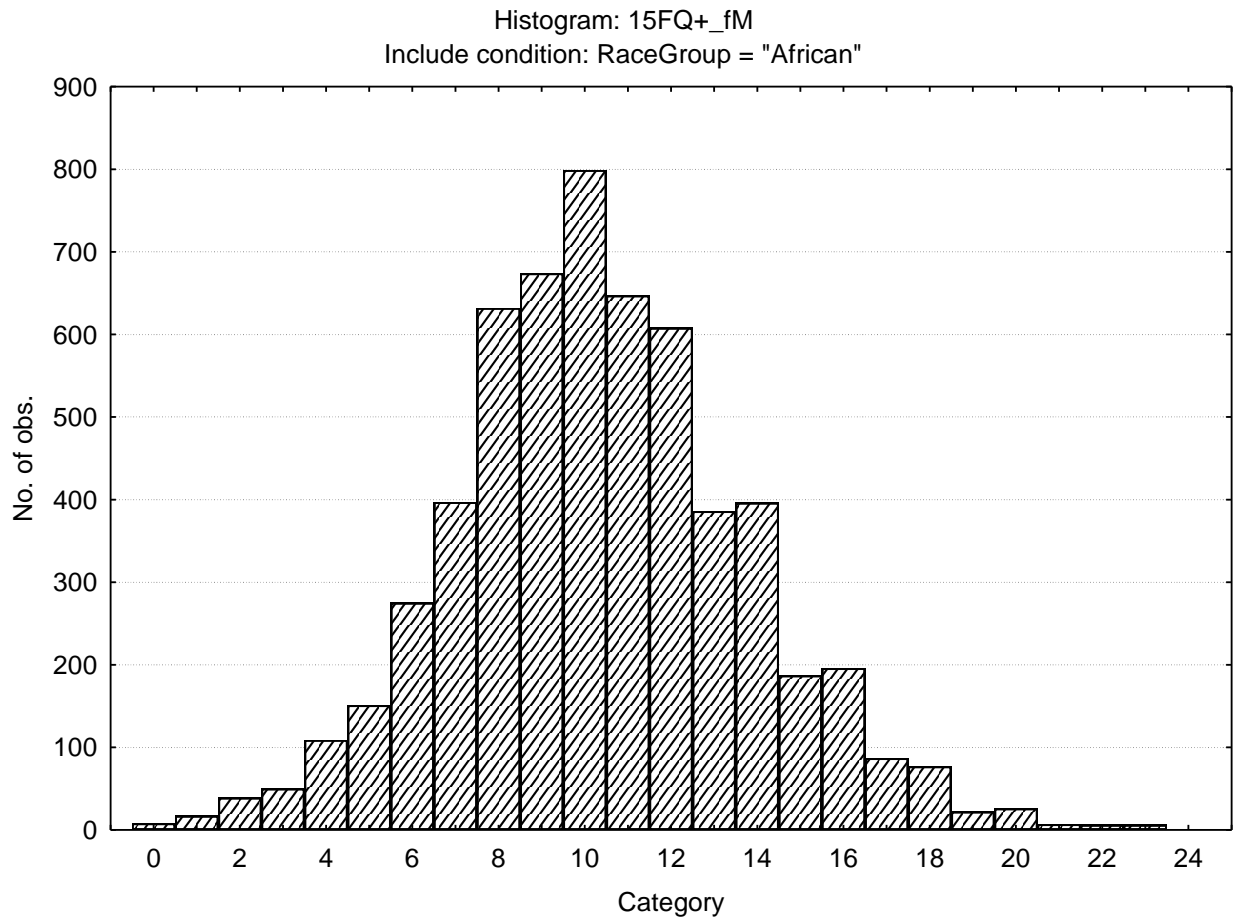
Trusting - Suspicious



N15-12

Updated 13 July 2010

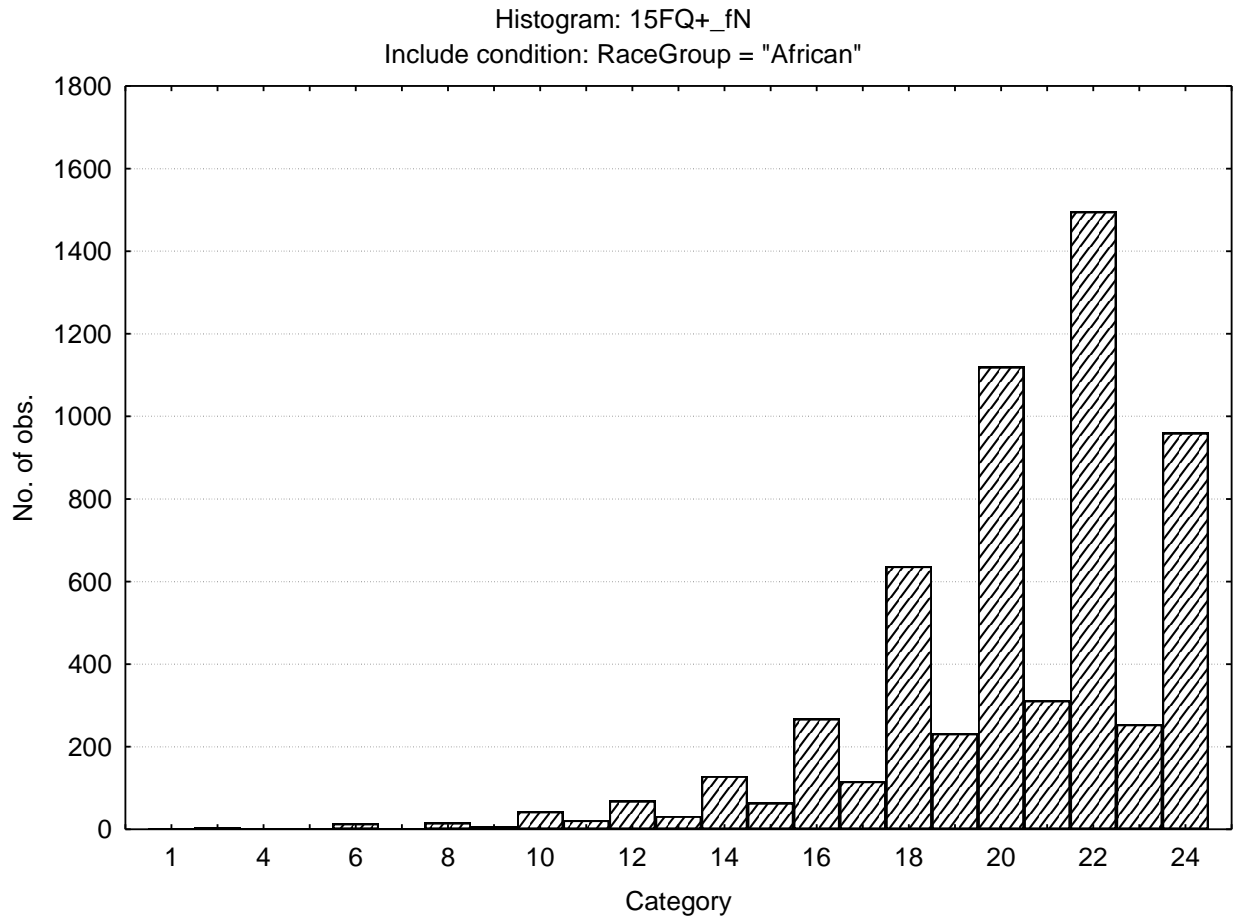
Concrete - Abstract



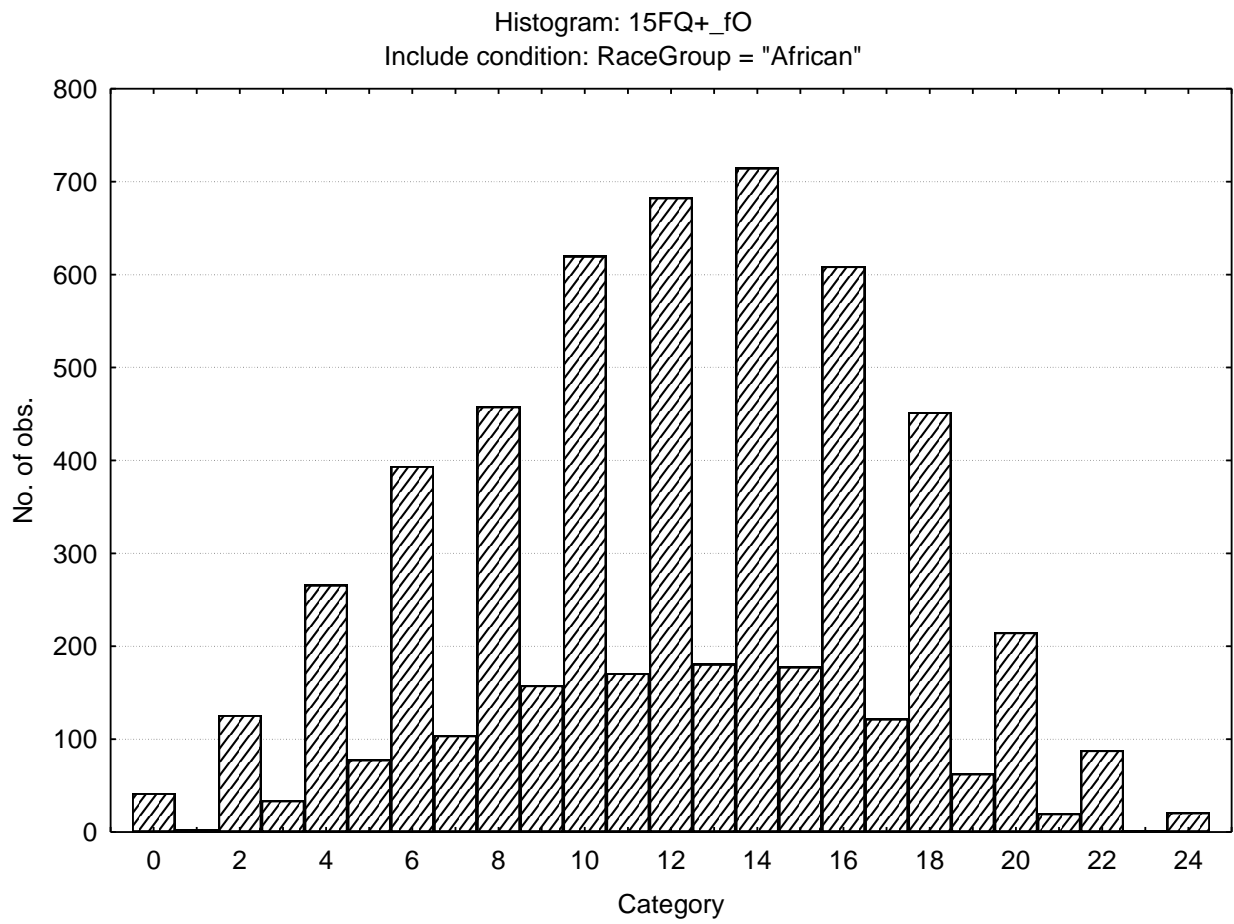
N15-13

Updated 13 July 2010

Direct - Restrained



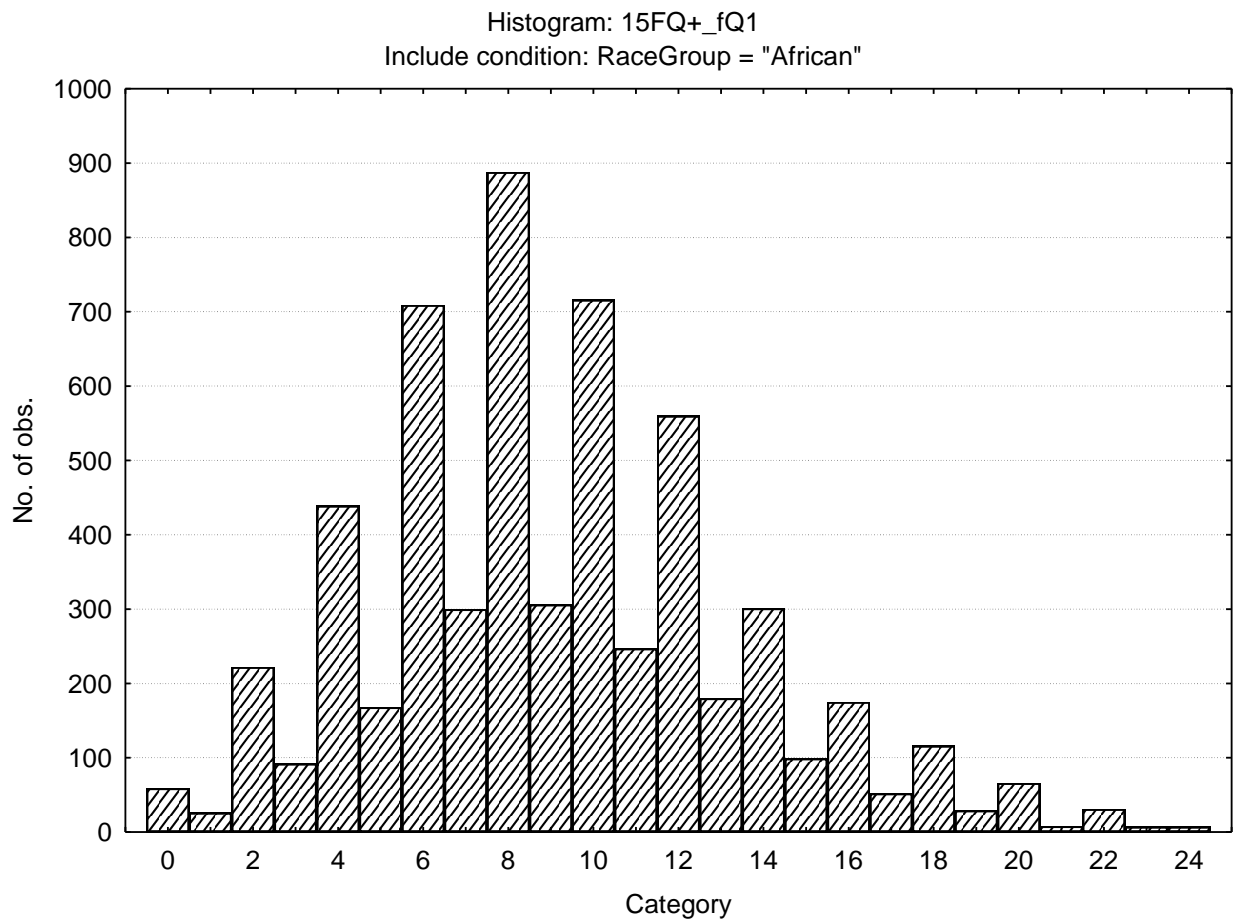
Self assured - Apprehensive



N15-15

Updated 13 July 2010

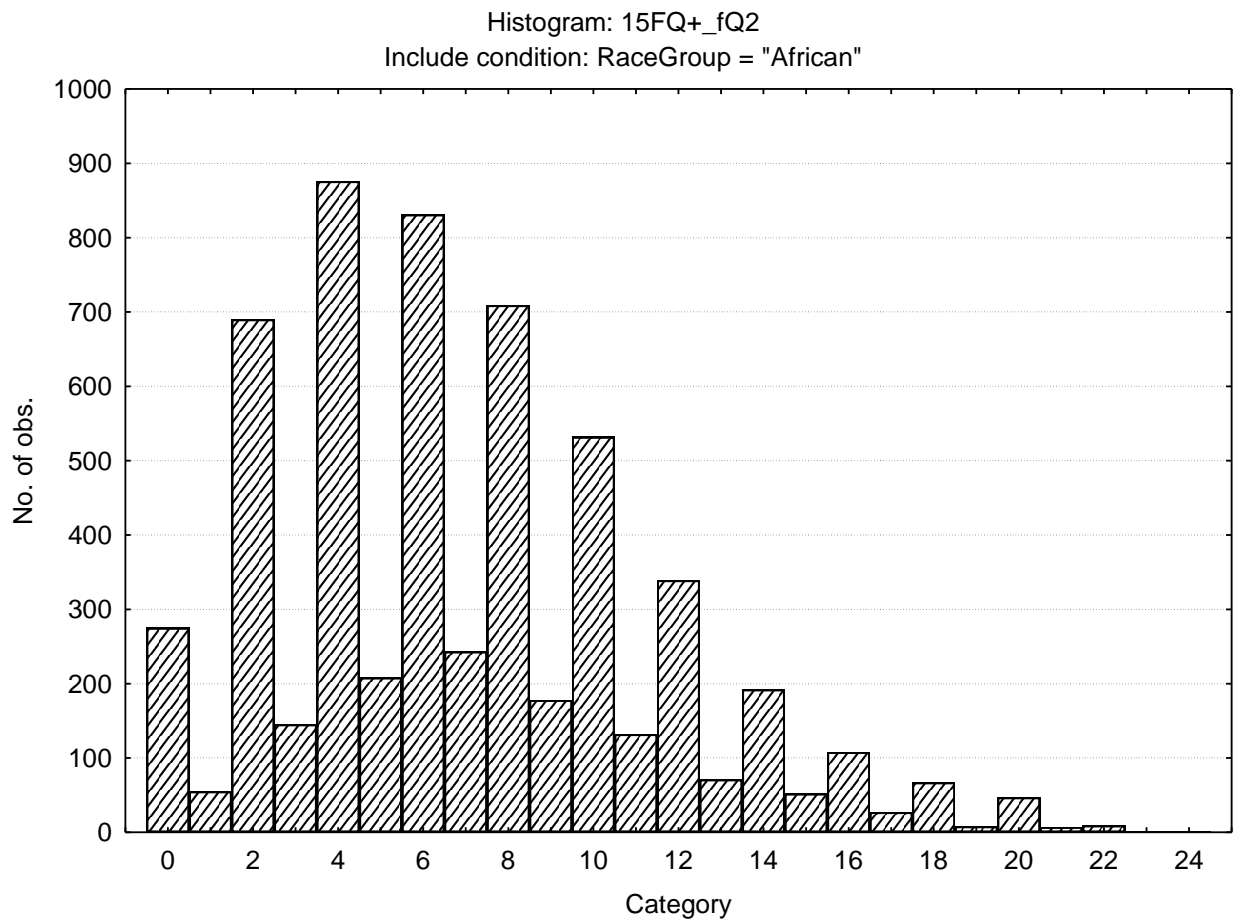
Conventional - Radical



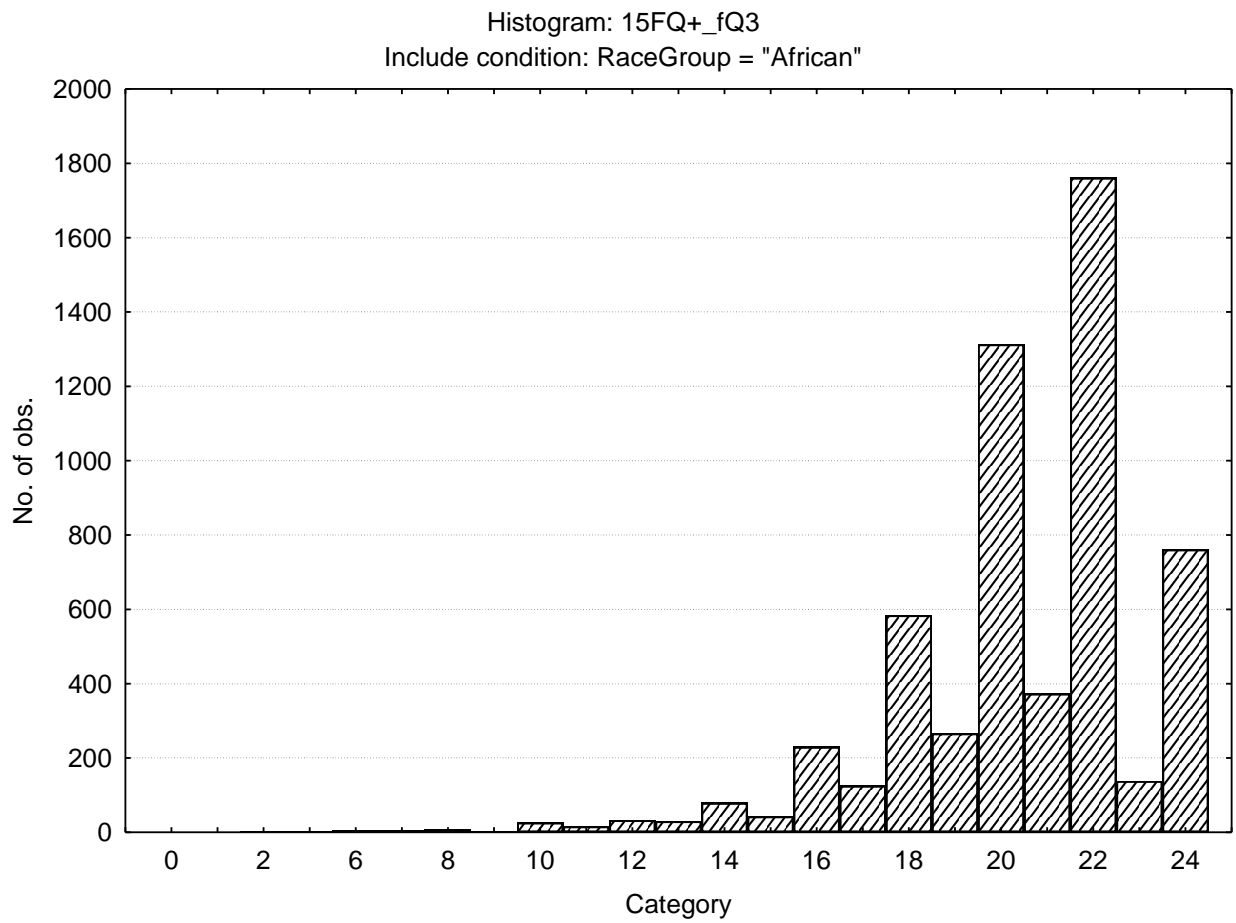
N15-16

Updated 13 July 2010

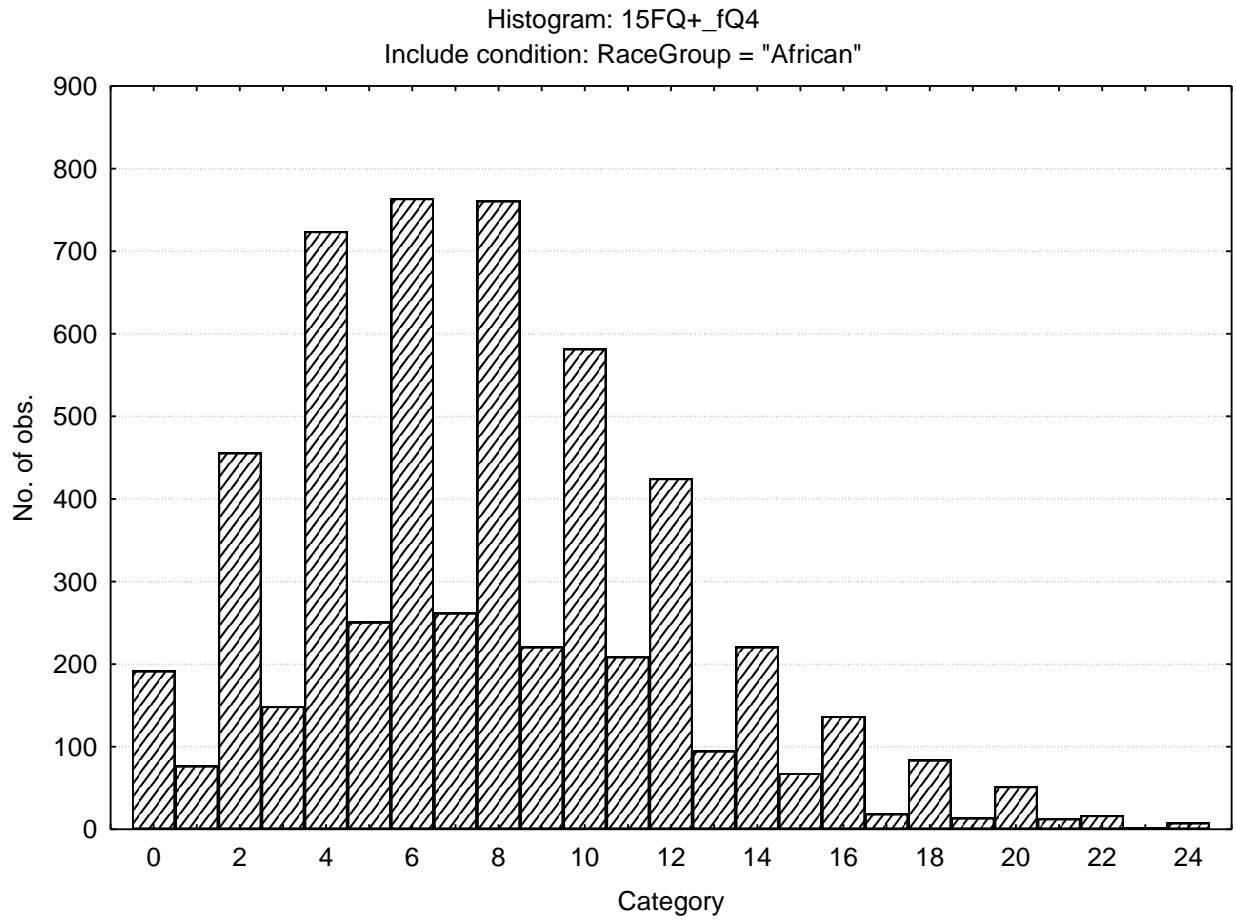
Group orientated - Self sufficient



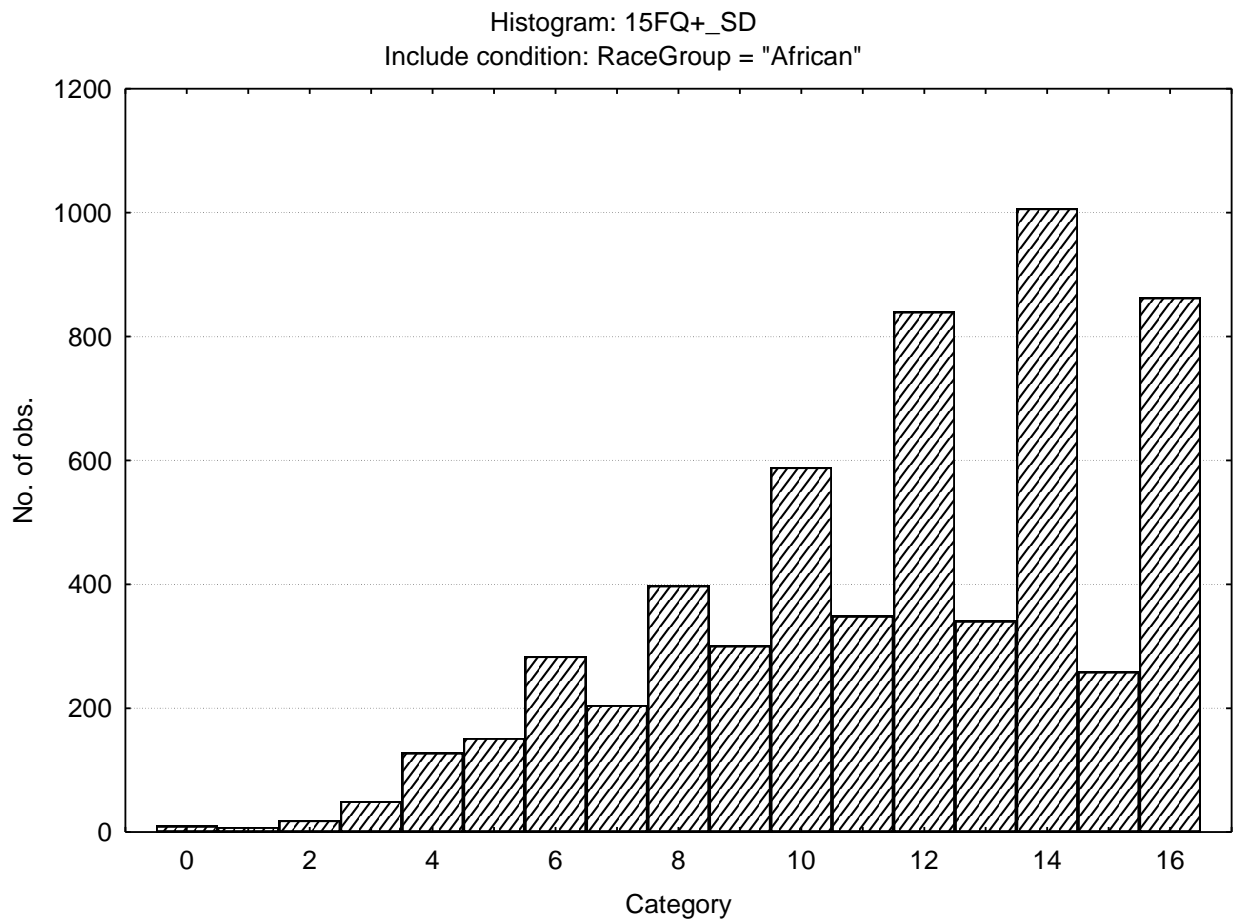
Informal – Self disciplined



Composed - Tense driven



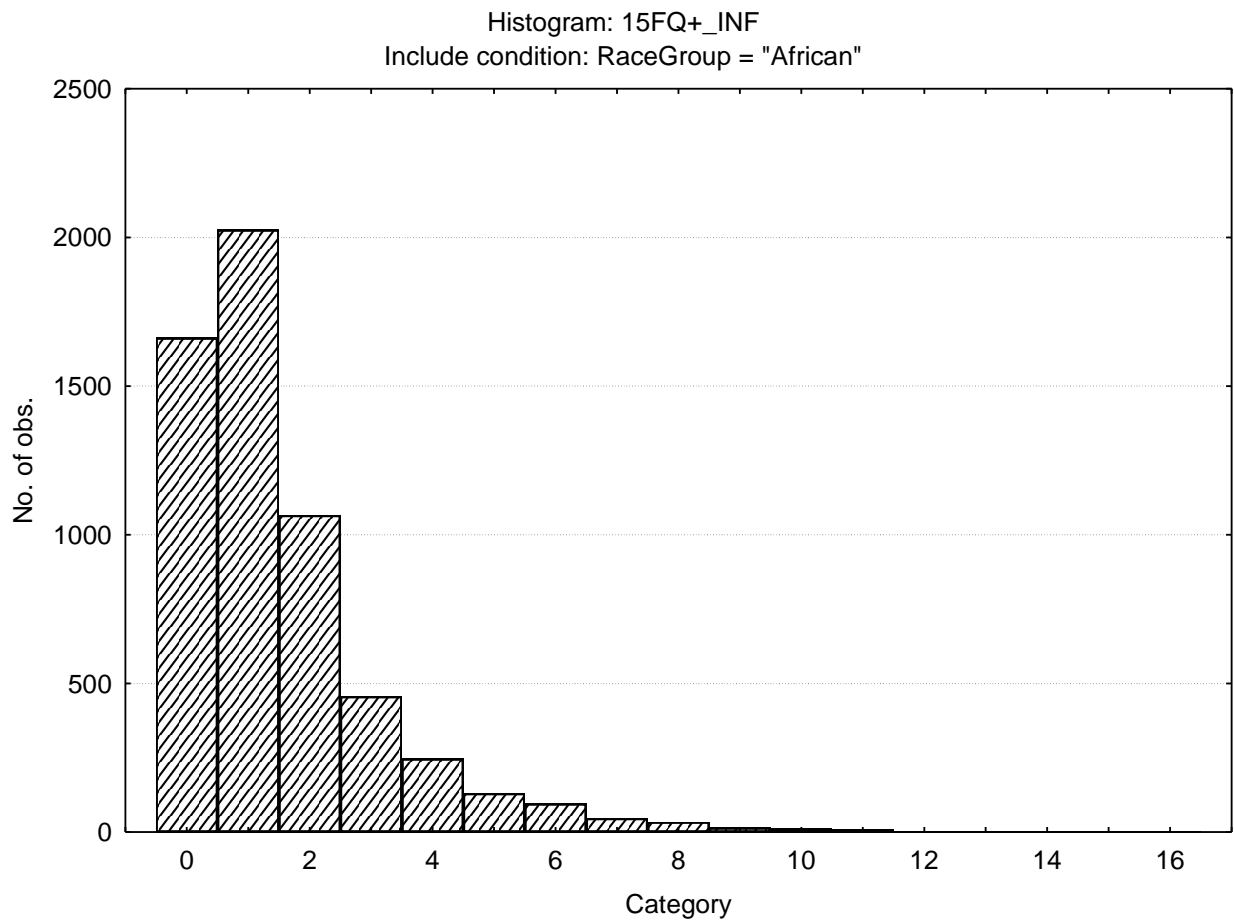
Social Desirability



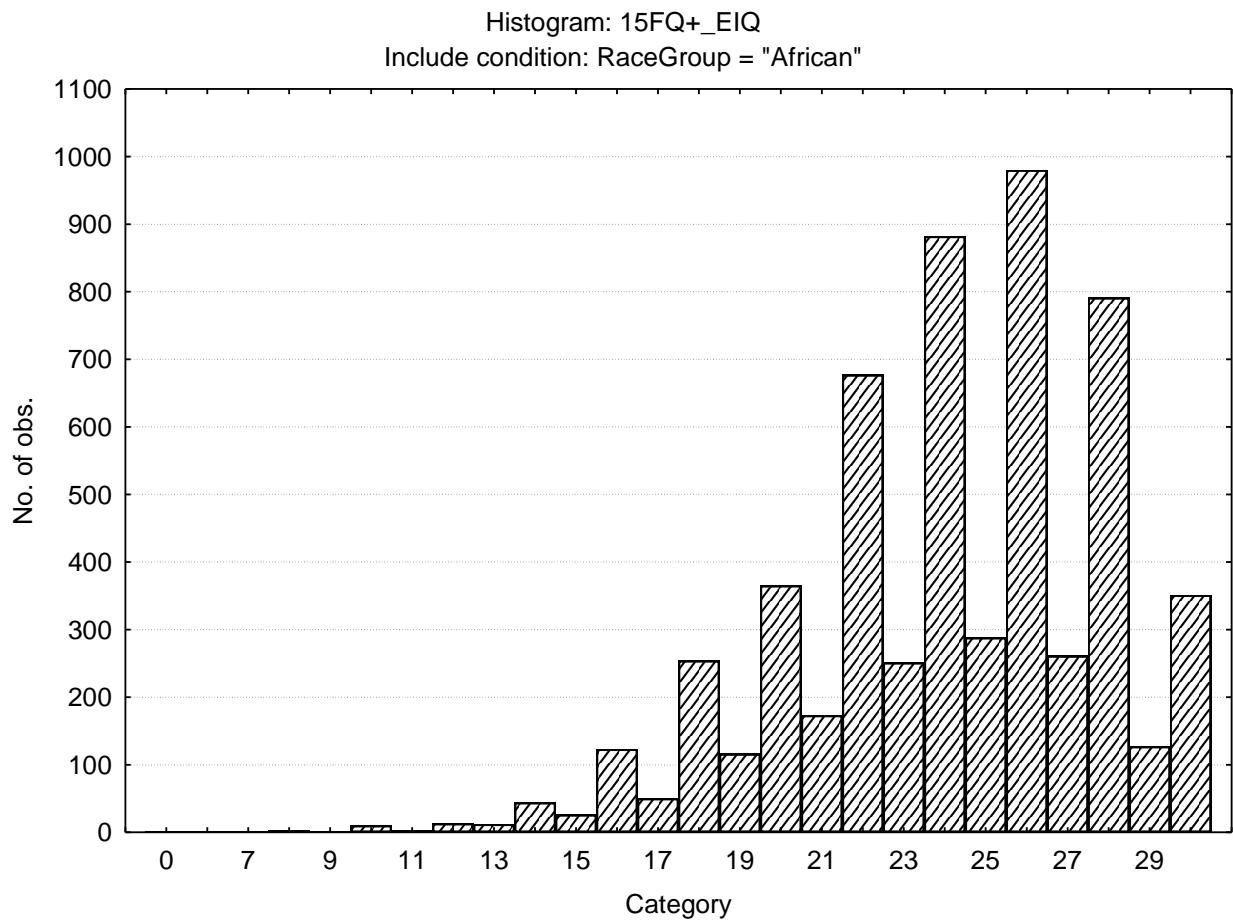
N15-20

Updated 13 July 2010

Central Tendency



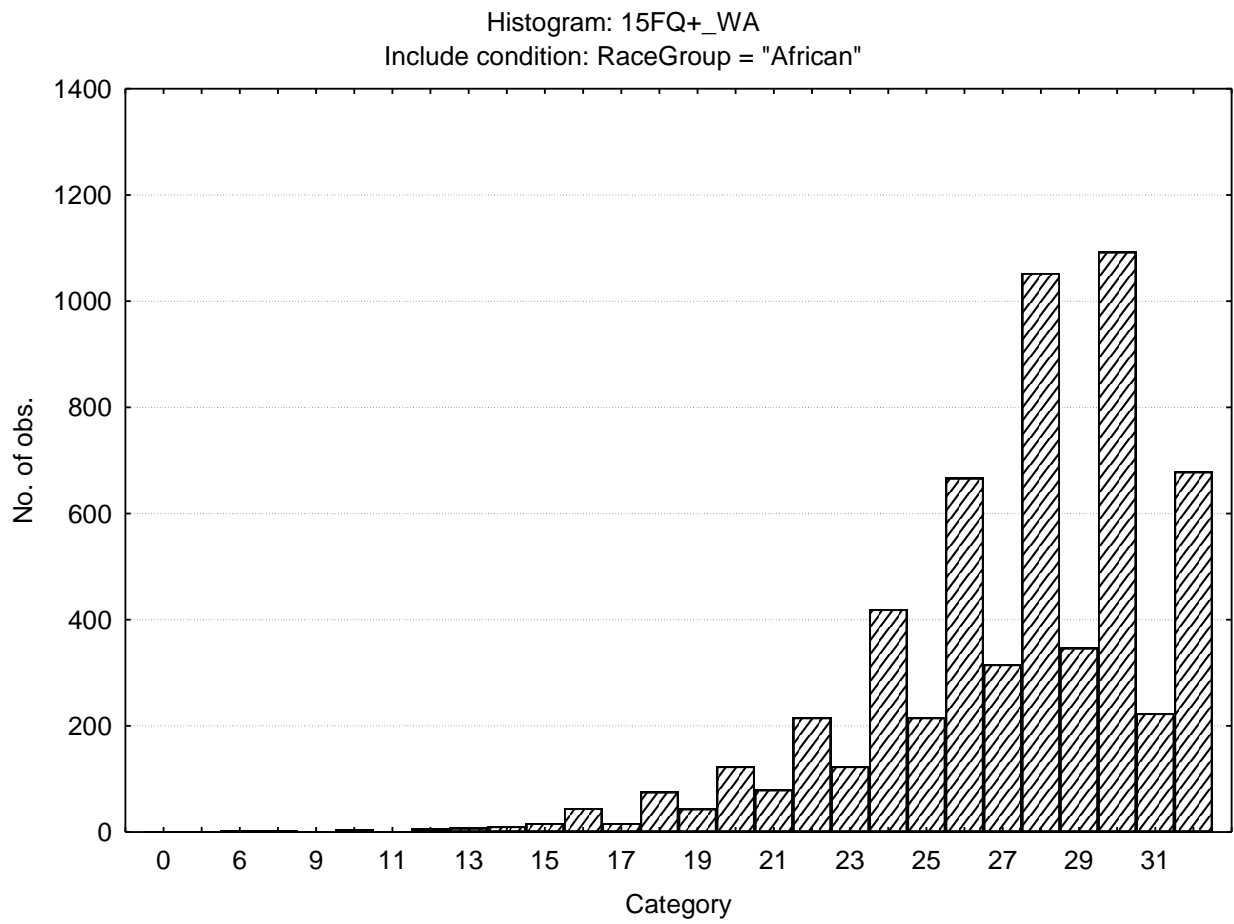
Emotional Intelligence



N15-22

Updated 13 July 2010

Work Attitude

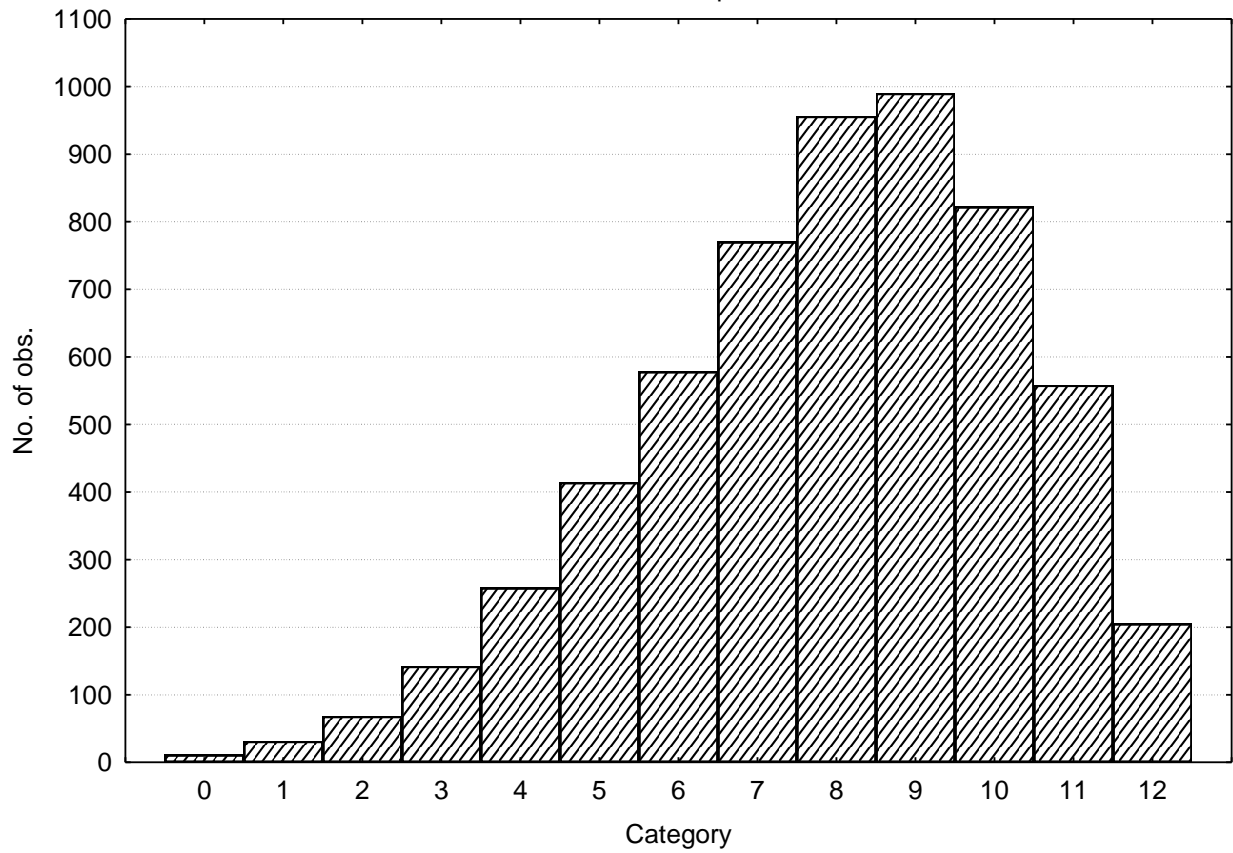


N15-23

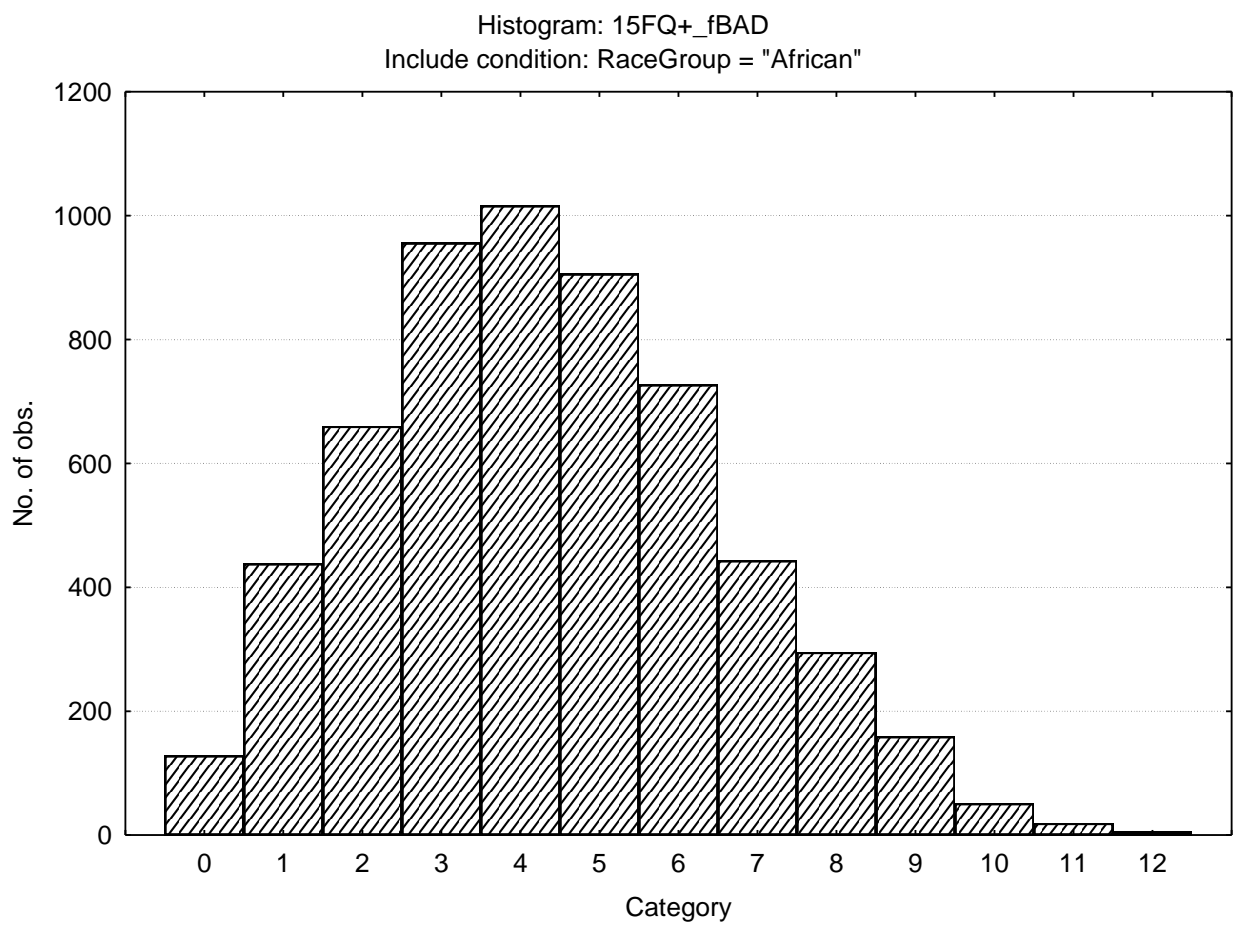
Updated 13 July 2010

Faking Good

Histogram: 15FQ+_fGOOD
Include condition: RaceGroup = "African"



Faking bad



N15-25

Updated 13 July 2010

Sten table

| | | S10_1 | S10_2 | S10_3 | S10_4 | S10_5 | S10_6 | S10_7 | S10_8 | S10_9 | S10_10 |
|-----------|--|-------|-------|-------|-------|-------|-------|-------|-------|-------|--------|
| 15FQ+_fA | <i>Distant aloof - empathic</i> | 0-12 | 13-14 | 15-15 | 16-17 | 18-19 | 20-20 | 21-22 | 23-23 | 24-24 | |
| 15FQ+_B | <i>Intellectance</i> | 1-11 | 12-13 | 14-15 | 16-17 | 18-19 | 20-21 | 22-23 | 24-24 | | |
| 15FQ+_fC | <i>Affected by feelings - emotionally stable</i> | 1-8 | 9-10 | 11-13 | 14-15 | 16-17 | 18-19 | 20-21 | 22-23 | 24-24 | |
| 15FQ+_fE | <i>Accommodating - Dominant</i> | 0-8 | 9-10 | 11-12 | 13-14 | 15-16 | 17-18 | 19-20 | 21-22 | 23-24 | |
| 15FQ+_fF | <i>Sober serious - Enthusiastic</i> | 0-3 | 4-6 | 7-8 | 9-11 | 12-14 | 15-16 | 17-19 | 20-22 | 23-24 | |
| 15FQ+_fG | <i>Expedient - Conscientious</i> | 0-12 | 13-14 | 15-16 | 17-18 | 19-19 | 20-21 | 22-23 | 24-24 | | |
| 15FQ+_fH | <i>Retiring - Socially bold</i> | 0-5 | 6-8 | 9-11 | 12-13 | 14-16 | 17-19 | 20-21 | 22-24 | | |
| 15FQ+_fI | <i>Tough Minded - Tender minded</i> | 0-5 | 6-7 | 8-9 | 10-12 | 13-14 | 15-17 | 18-19 | 20-21 | 22-24 | |
| 15FQ+_fL | <i>Trusting - Suspicious</i> | 0-1 | 2-3 | 4-6 | 7-8 | 9-10 | 11-13 | 14-15 | 16-17 | 18-19 | 20-24 |
| 15FQ+_fM | <i>Concrete - Abstract</i> | 0-3 | 4-5 | 6-6 | 7-8 | 9-10 | 11-12 | 13-13 | 14-15 | 16-17 | 18-24 |
| 15FQ+_fN | <i>Direct - Restrained</i> | 1-13 | 14-15 | 16-17 | 18-18 | 19-20 | 21-21 | 22-23 | 24-24 | | |
| 15FQ+_fO | <i>Self-assured - Apprehensive</i> | 0-2 | 3-4 | 5-7 | 8-9 | 10-12 | 13-14 | 15-16 | 17-19 | 20-21 | 22-24 |
| 15FQ+_fQ1 | <i>Conventional - Radical</i> | 0-0 | 1-2 | 3-4 | 5-7 | 8-9 | 10-11 | 12-13 | 14-15 | 16-17 | 18-24 |
| 15FQ+_fQ2 | <i>Group - orientated - Self-sufficient</i> | 0--1 | 0-0 | 1-2 | 3-4 | 5-6 | 7-9 | 10-11 | 12-13 | 14-15 | 16-24 |

N15-26

Updated 13 July 2010

| | | S10_1 | S10_2 | S10_3 | S10_4 | S10_5 | S10_6 | S10_7 | S10_8 | S10_9 | S10_10 |
|-------------|--|-------|-------|-------|-------|-------|-------|-------|-------|-------|--------|
| 15FQ+_fQ3 | <i>Informal- self disciplined</i> | 0-15 | 16-16 | 17-17 | 18-19 | 20-20 | 21-21 | 22-23 | 24-24 | | |
| 15FQ+_fQ4 | <i>Composed - tense driven</i> | 0--1 | 0-1 | 2-3 | 4-5 | 6-7 | 8-9 | 10-12 | 13-14 | 15-16 | 17-24 |
| 15FQ+_SD | <i>Social desirability</i> | 0-4 | 5-6 | 7-7 | 8-9 | 10-11 | 12-13 | 14-14 | 15-16 | | |
| 15FQ+_CT | <i>Central Tendency</i> | 0--1 | 0-0 | 1-1 | 2-4 | 5-11 | 12-18 | 19-24 | 25-31 | 32-38 | 39-128 |
| 15FQ+_INF | <i>Infrequency</i> | 0--1 | 0-0 | 1-1 | 2-2 | 3-3 | 4-4 | 5-5 | 6-6 | 7-7 | 8-16 |
| 15FQ+_EIQ | <i>Derived score: Emotional Intelligence</i> | 0-16 | 17-18 | 19-20 | 21-22 | 23-24 | 25-25 | 26-27 | 28-29 | 30-30 | |
| 15FQ+_WA | <i>Derived score: Work attitude</i> | 0-19 | 20-21 | 22-23 | 24-25 | 26-27 | 28-29 | 30-31 | 32-32 | | |
| 15FQ+_fGOOD | <i>Faking good</i> | 0-3 | 4-4 | 5-5 | 6-6 | 7-7 | 8-9 | 10-10 | 11-11 | 12-12 | |
| 15FQ+_fBAD | <i>Faking bad</i> | 0--1 | 0-1 | 2-2 | 3-3 | 4-4 | 5-5 | 6-6 | 7-7 | 8-8 | 9-12 |

N15-27

Updated 13 July 2010