

Clerical test battery norm group: South African general population, updated 2012

Sample composition

The sample consisted of South Africans who were assessed on the Clerical Test Battery by Psytech SA and its collaborators in the period leading up to January 2012. Not all respondents completed the entire battery, therefore biographical particulars are reported separately for the different subtests.

Biographical composition of the sample: Verbal Reasoning Test (VR2)

Category	Frequency table: Sex			
	Count	Cumulative Count	Percent	Cumulative Percent
F	4057	4057	59.00233	59.0023
M	2745	6802	39.92147	98.9238
U	74	6876	1.07621	100.0000
Missing	0	6876	0.00000	100.0000

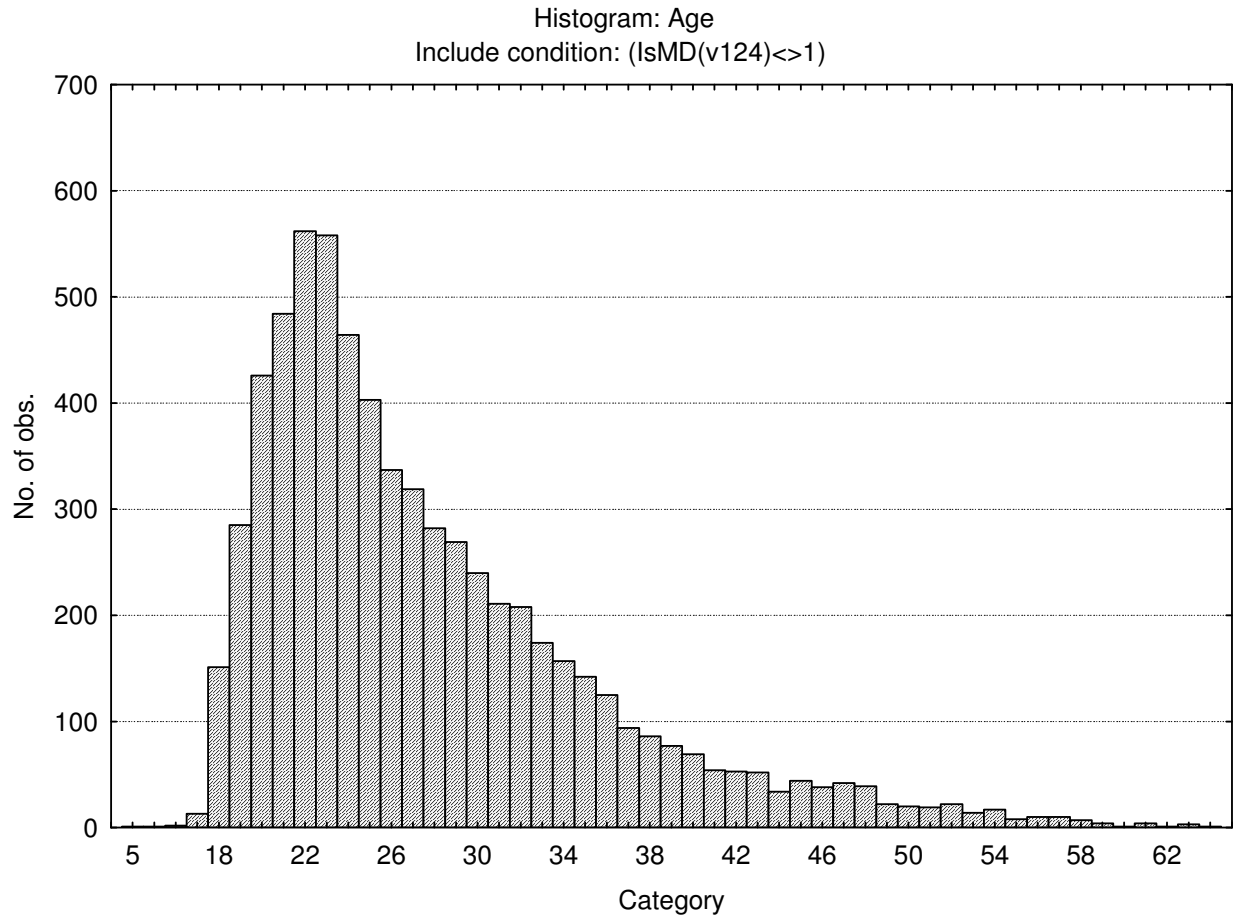
Category	Frequency table: Education			
	Count	Cumulative Count	Percent	Cumulative Percent
Grade 12	2872	2872	41.76847	41.7685
Under Gr 12	238	3110	3.46131	45.2298
Degree	319	3429	4.63933	49.8691
Certificate	115	3544	1.67248	51.5416
Post Graduate	49	3593	0.71262	52.2542
Technikon	494	4087	7.18441	59.4386
Diploma	297	4384	4.31937	63.7580
Missing	2492	6876	36.24200	100.0000

Category	Frequency table: Language			
	Count	Cumulative Count	Percent	Cumulative Percent
isiZulu	782	782	11.37289	11.3729
Afrikaans	731	1513	10.63118	22.0041
isiXhosa	360	1873	5.23560	27.2397
siSwati	88	1961	1.27981	28.5195
Sesotho	348	2309	5.06108	33.5806
Setswana	405	2714	5.89005	39.4706
Sepedi	163	2877	2.37056	41.8412
Xitsonga	80	2957	1.16347	43.0047
Tshivenda	51	3008	0.74171	43.7464
English	1427	4435	20.75334	64.4997
isiNdebele	34	4469	0.49447	64.9942
Missing	2407	6876	35.00582	100.0000

Category	Frequency table: Language Group			
	Count	Cumulative Count	Percent	Cumulative Percent
Indigenous	2311	2311	33.60966	33.6097
English	1427	3738	20.75334	54.3630
Afrikaans	731	4469	10.63118	64.9942
Missing	2407	6876	35.00582	100.0000

Category	Frequency table: Race			
	Count	Cumulative Count	Percent	Cumulative Percent
Coloured	831	831	12.08551	12.0855
European	633	1464	9.20593	21.2914
Asian	615	2079	8.94415	30.2356
African	2491	4570	36.22746	66.4631
Missing	2306	6876	33.53694	100.0000

Variable	Descriptive Statistics : Age					
	Mean	Std.Dev	Minimum	Maximum	N	No.cases Missing
Age	27.70551	7.857333	5.000000	99.00000	6659	217



Biographical composition of the sample: Numerical Ability Test (NA2)

Category	Frequency table: sex			
	Count	Cumulative Count	Percent	Cumulative Percent
F	29888	29888	66.56274	66.5627
M	14850	44738	33.07202	99.6348
U	164	44902	0.36524	100.0000
Missing	0	44902	0.00000	100.0000

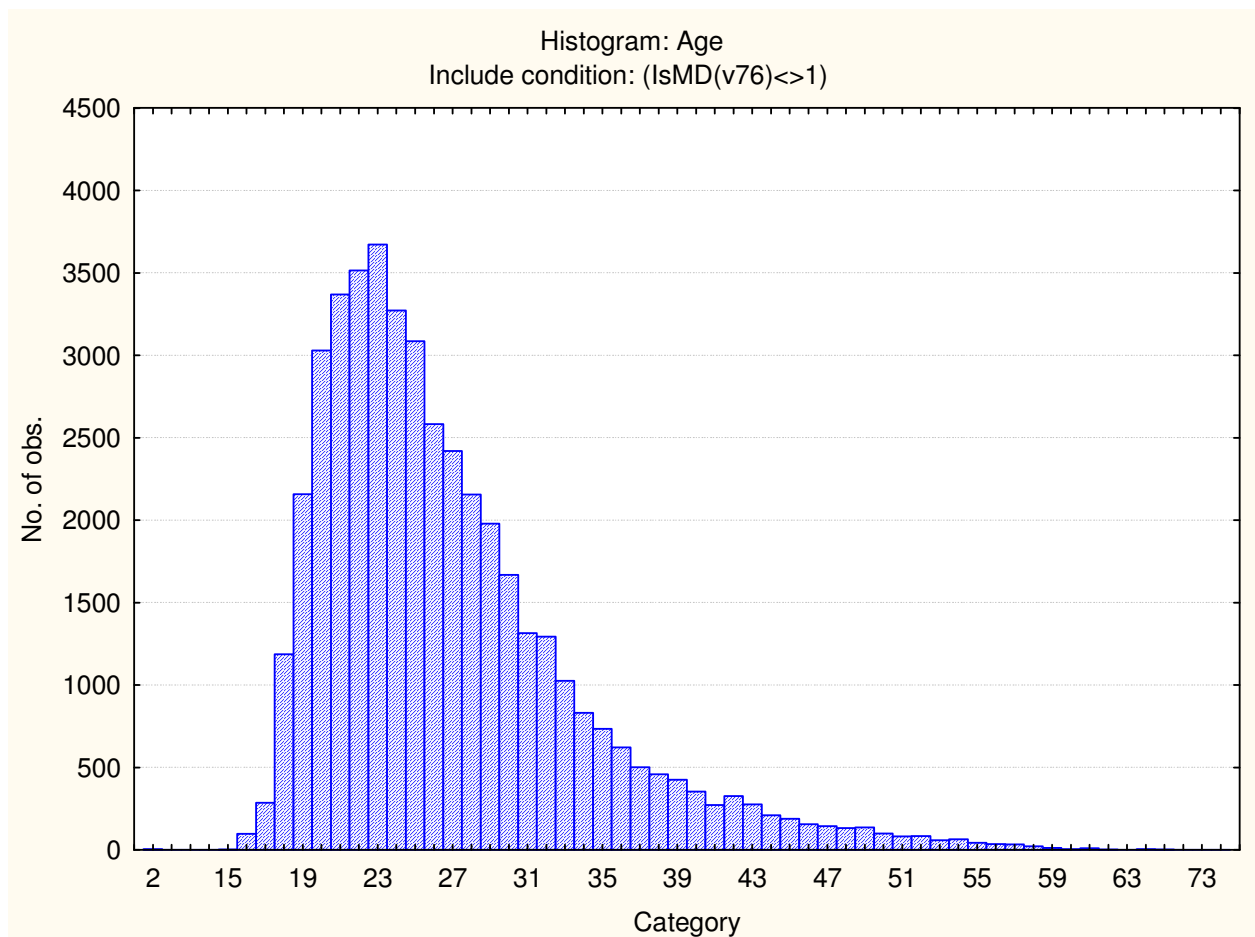
Category	Frequency table: Education			
	Count	Cumulative Count	Percent	Cumulative Percent
Grade 12	20649	20649	45.98682	45.9868
Under Gr 12	2757	23406	6.14004	52.1269
Degree	1435	24841	3.19585	55.3227
Certificate	2039	26880	4.54100	59.8637
Post Graduate	431	27311	0.95987	60.8236
Technikon	1313	28624	2.92415	63.7477
Diploma	3368	31992	7.50078	71.2485
Missing	12910	44902	28.75150	100.0000

Category	Frequency table: Language			
	Count	Cumulative Count	Percent	Cumulative Percent
isiZulu	6380	6380	14.20872	14.2087
Afrikaans	3718	10098	8.28025	22.4890
isiXhosa	3490	13588	7.77248	30.2615
siSwati	540	14128	1.20262	31.4641
Sesotho	2629	16757	5.85497	37.3191
Setswana	3619	20376	8.05977	45.3788
Sepedi	2483	22859	5.52982	50.9086
Xitsonga	733	23592	1.63244	52.5411
Tshivenda	583	24175	1.29838	53.8395
English	7408	31583	16.49815	70.3376
isiNdebele	307	31890	0.68371	71.0213
Missing	13012	44902	28.97866	100.0000

Category	Frequency table: Language Group			
	Count	Cumulative Count	Percent	Cumulative Percent
Indigenous	20764	20764	46.24293	46.2429
English	7408	28172	16.49815	62.7411
Afrikaans	3718	31890	8.28025	71.0213
Missing	13012	44902	28.97866	100.0000

Category	Frequency table: Race			
	Count	Cumulative Count	Percent	Cumulative Percent
Coloured	6811	6811	15.16859	15.1686
European	1717	8528	3.82388	18.9925
Asian	3059	11587	6.81261	25.8051
African	21824	33411	48.60363	74.4087
Missing	11491	44902	25.59129	100.0000

Variable	Descriptive Statistics : Age					
	Mean	Std.Dev	Minimum	Maximum	N	No.cases Missing
Age	26.75128	7.027092	2.000000	99.00000	44488	414



Biographical composition of the sample: Spelling test (SP2)

Category	Frequency table: Sex			
	Count	Cumulative Count	Percent	Cumulative Percent
F	1251	1251	61.56496	61.5650
M	727	1978	35.77756	97.3425
U	54	2032	2.65748	100.0000
Missing	0	2032	0.00000	100.0000

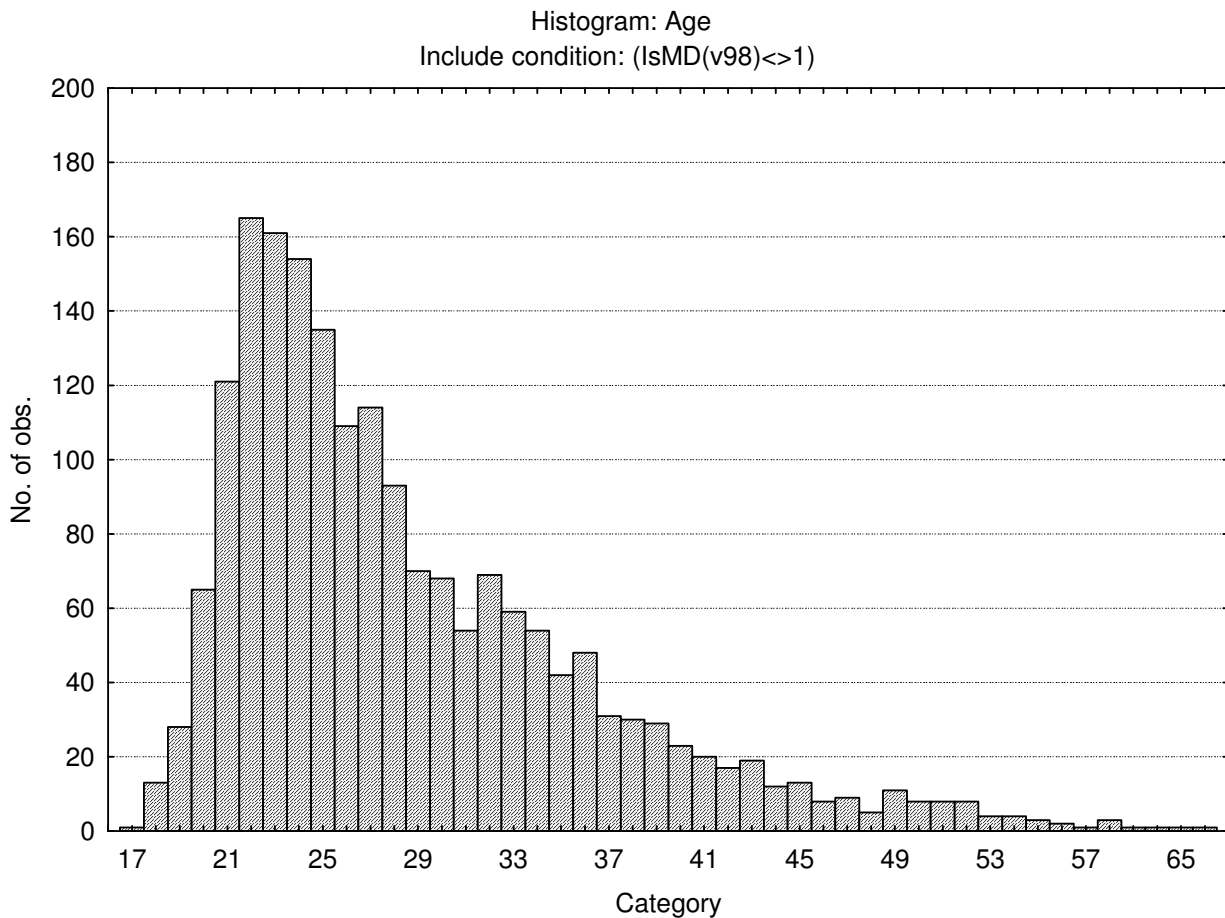
Category	Frequency table: Education			
	Count	Cumulative Count	Percent	Cumulative Percent
Grade 12	409	409	20.12795	20.1280
Under Gr 12	46	455	2.26378	22.3917
Degree	143	598	7.03740	29.4291
Certificate	13	611	0.63976	30.0689
Post Graduate	26	637	1.27953	31.3484
Technikon	86	723	4.23228	35.5807
Diploma	234	957	11.51575	47.0965
Missing	1075	2032	52.90354	100.0000

Category	Frequency table: Language			
	Count	Cumulative Count	Percent	Cumulative Percent
isiZulu	176	176	8.66142	8.6614
Afrikaans	132	308	6.49606	15.1575
isiXhosa	92	400	4.52756	19.6850
siSwati	7	407	0.34449	20.0295
Sesotho	118	525	5.80709	25.8366
Setswana	126	651	6.20079	32.0374
Sepedi	41	692	2.01772	34.0551
Xitsonga	26	718	1.27953	35.3346
Tshivenda	25	743	1.23031	36.5650
English	194	937	9.54724	46.1122
isiNdebele	8	945	0.39370	46.5059
Missing	1087	2032	53.49409	100.0000

Category	Frequency table: Language Group			
	Count	Cumulative Count	Percent	Cumulative Percent
Indigenous	619	619	30.46260	30.4626
English	194	813	9.54724	40.0098
Afrikaans	132	945	6.49606	46.5059
Missing	1087	2032	53.49409	100.0000

Category	Frequency table: Race			
	Count	Cumulative Count	Percent	Cumulative Percent
Coloured	122	122	6.00394	6.0039
European	116	238	5.70866	11.7126
Asian	55	293	2.70669	14.4193
African	684	977	33.66142	48.0807
Missing	1055	2032	51.91929	100.0000

Variable	Descriptive Statistics: Age					
	Mean	Std.Dev	Minimum	Maximum	N	No.cases Missing
Age	28.65224	7.770257	17.00000	99.00000	1895	137



Biographical composition of the sample: Clerical Checking test (CC2)

Category	Frequency table: Sex			
	Count	Cumulative Count	Percent	Cumulative Percent
F	31754	31754	65.59795	65.5980
M	16483	48237	34.05086	99.6488
U	170	48407	0.35119	100.0000
Missing	0	48407	0.00000	100.0000

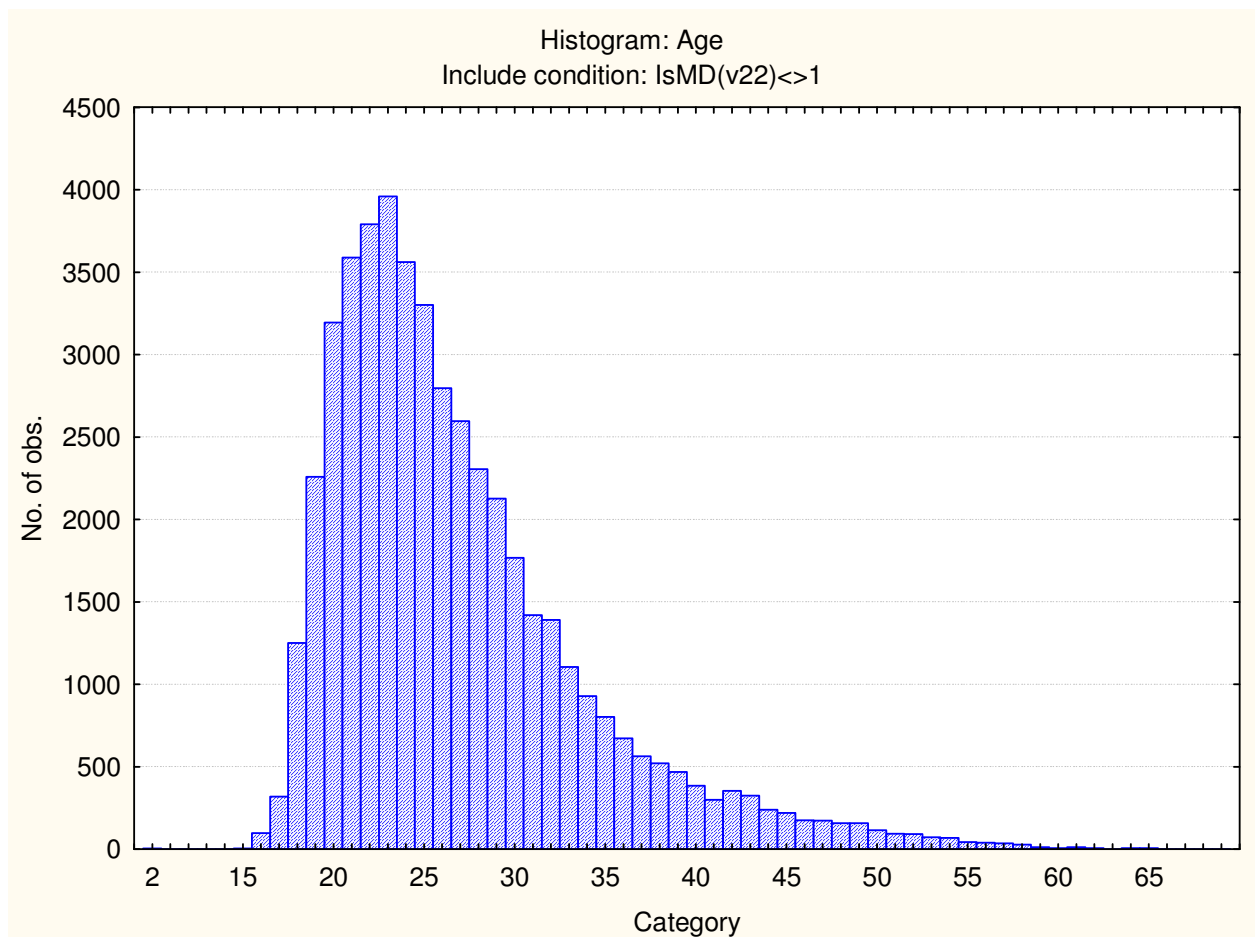
Category	Frequency table: Education			
	Count	Cumulative Count	Percent	Cumulative Percent
Grade 12	21710	21710	44.84889	44.8489
Under Gr 12	3014	24724	6.22637	51.0753
Degree	1635	26359	3.37761	54.4529
Certificate	2118	28477	4.37540	58.8283
Post Graduate	482	28959	0.99572	59.8240
Technikon	1585	30544	3.27432	63.0983
Diploma	3779	34323	7.80672	70.9050
Missing	14084	48407	29.09497	100.0000

Category	Frequency table: Language			
	Count	Cumulative Count	Percent	Cumulative Percent
isiZulu	7010	7010	14.48138	14.4814
Afrikaans	4133	11143	8.53802	23.0194
isiXhosa	3802	14945	7.85424	30.8736
siSwati	562	15507	1.16099	32.0346
Sesotho	2862	18369	5.91237	37.9470
Setswana	3884	22253	8.02363	45.9706
Sepedi	2571	24824	5.31122	51.2818
Xitsonga	771	25595	1.59274	52.8746
Tshivenda	619	26214	1.27874	54.1533
English	7891	34105	16.30136	70.4547
isiNdebele	326	34431	0.67346	71.1281
Missing	13976	48407	28.87186	100.0000

Category	Frequency table: Language Group			
	Count	Cumulative Count	Percent	Cumulative Percent
Indigenous	22407	22407	46.28876	46.2888
English	7891	30298	16.30136	62.5901
Afrikaans	4133	34431	8.53802	71.1281
Missing	13976	48407	28.87186	100.0000

Category	Frequency table: Race			
	Count	Cumulative Count	Percent	Cumulative Percent
Coloured	7233	7233	14.94205	14.9421
European	1918	9151	3.96224	18.9043
Asian	3306	12457	6.82959	25.7339
African	23532	35989	48.61280	74.3467
Missing	12418	48407	25.65331	100.0000

Variable	Descriptive Statistics: Age					
	Mean	Std.Dev	Minimum	Maximum	N	No.cases Missing
Age	26.86123	7.121651	2.000000	99.00000	47956	451

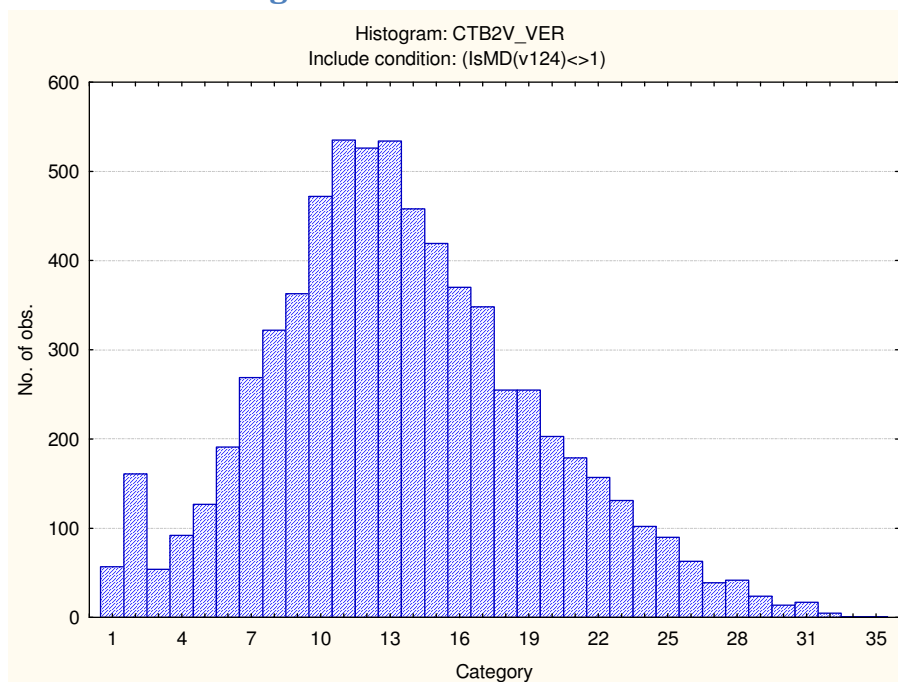


Descriptive statistics on Clerical Test Battery subtests

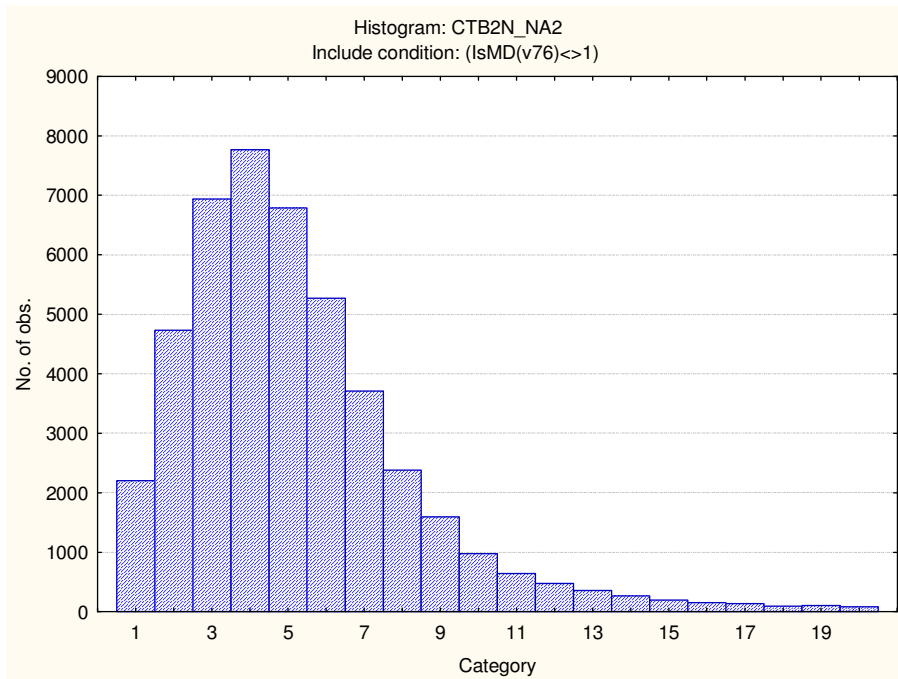
Scale	Mean	Standard deviation	Minimum score	Maximum score	N
Verbal Reasoning	13.52036	5.807834	1.000000	35.00000	6876
Numerical Ability	5.185493	3.020055	1.000000	20.00000	44902
Clerical Checking Numerical	9.47945	3.271751	1.000000	26.00000	48337
Clerical Checking Verbal	8.52368	3.354513	1.000000	26.00000	48289
Clerical Checking Total	17.96864	6.340469	1.000000	52.00000	48407
Spelling	12.47539	5.634125	1.000000	24.00000	2032

Frequency distributions

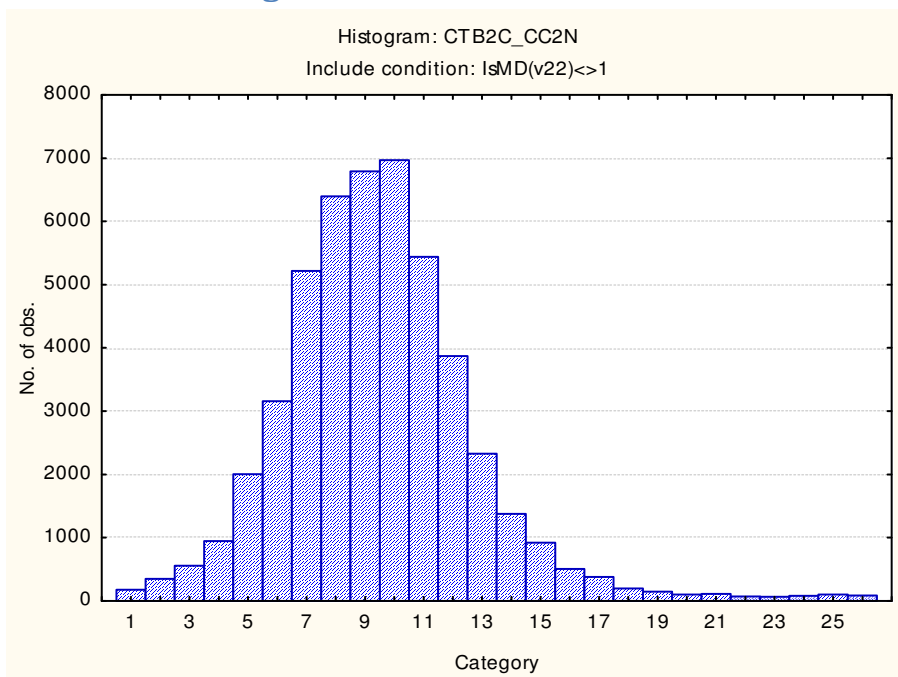
Verbal Reasoning



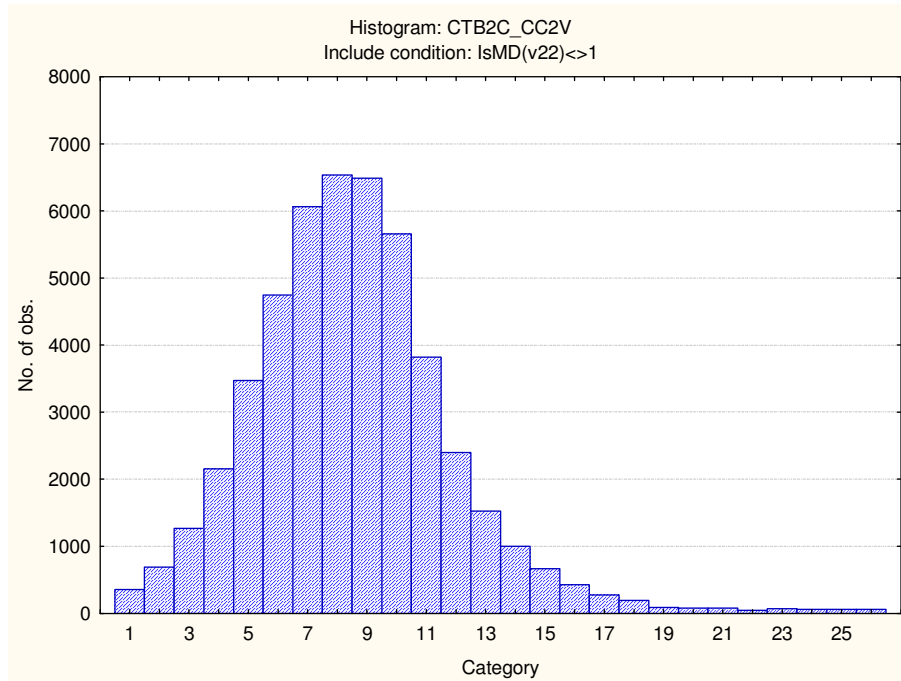
Numerical Ability



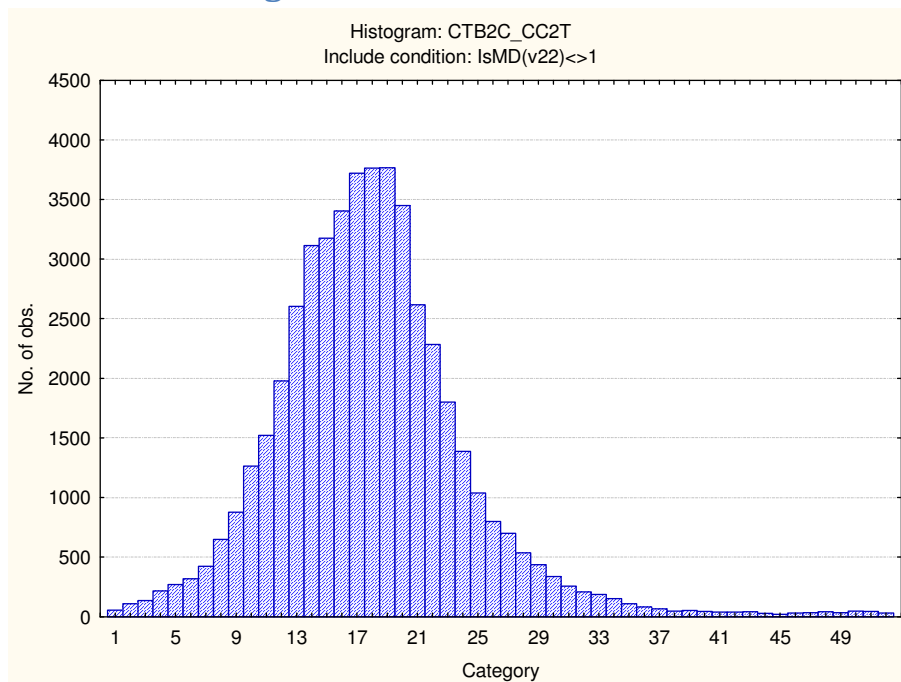
Clerical Checking Numerical



Clerical Checking Verbal



Clerical Checking Total score



Spelling

Stanine table

	S9_1	S9_2	S9_3	S9_4	S9_5	S9_6	S9_7	S9_8	S9_9
--	------	------	------	------	------	------	------	------	------

CTB2 norm group 15
SA General population updated 2012

Verbal Reasoning	1-3	4-6	7-9	10-12	13-14	15-17	18-20	21-23	24-35
Numerical Ability	1-0	1-1	2-2	3-4	5-5	6-7	8-8	9-10	11-20
Clerical Checking - Numerical	1-3	4-5	6-7	8-8	9-10	11-11	12-13	14-15	16-26
Clerical Checking - Verbal	1-2	3-4	5-6	7-7	8-9	10-11	12-12	13-14	15-26
Clerical Checking - Total	1-6	7-10	11-13	14-16	17-19	20-22	23-25	26-29	30-52
Spelling	1-2	3-5	6-8	9-11	12-13	14-16	17-19	20-22	23-24