

Values and Motives Inventory (VMI)

Norm Group: SA Sesotho Speakers, Updated 2016

Norm Type:

Standard deviation norm

Sample Composition

Compiled from raw data on 101 respondents submitted by various clients as well as collected by Psytech SA and collaborators, via GeneSys for Windows, in the period up to November 2013.

Biographical Composition

Category	Frequency table: Sex			
	Count	Cumulative Count	Percent	Cumulative Percent
M	51	51	50,49505	50,4950
F	50	101	49,50495	100,0000
Missing	0	101	0,00000	100,0000

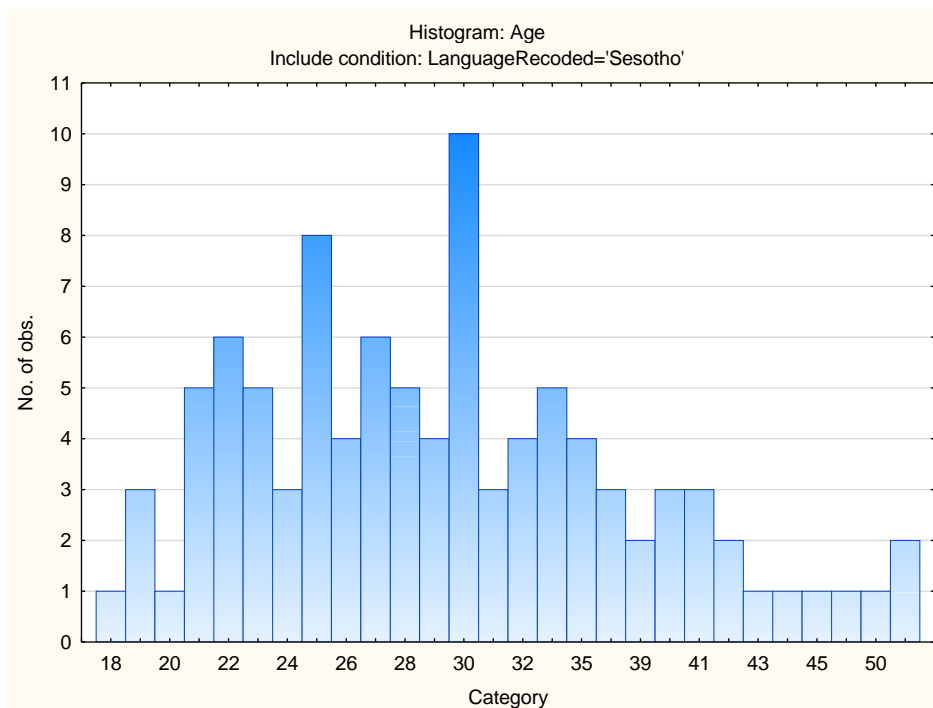
Category	Frequency table: Education			
	Count	Cumulative Count	Percent	Cumulative Percent
Grade 12	34	34	33,66337	33,6634
Tertiary	22	56	21,78218	55,4455
Tertiary Certificate/Trade	18	74	17,82178	73,2673
Post Graduate	24	98	23,76238	97,0297
Missing	3	101	2,97030	100,0000

Category	Frequency table: Language			
	Count	Cumulative Count	Percent	Cumulative Percent
Sesotho	101	101	100,0000	100,0000
Missing	0	101	0,0000	100,0000

Category	Frequency table: Language Group			
	Count	Cumulative Count	Percent	Cumulative Percent
Indigenous	101	101	100,0000	100,0000
Missing	0	101	0,0000	100,0000

Category	Frequency table: Race			
	Count	Cumulative Count	Percent	Cumulative Percent
European	1	1	0,99010	0,9901
African	96	97	95,04950	96,0396
Missing	4	101	3,96040	100,0000

Variable	Descriptive Statistics: Age					
	Mean	Std.Dev	Minimum	Maximum	N	No.cases Missing
Age	30,16495	8,068303	18,00000	57,00000	97	4

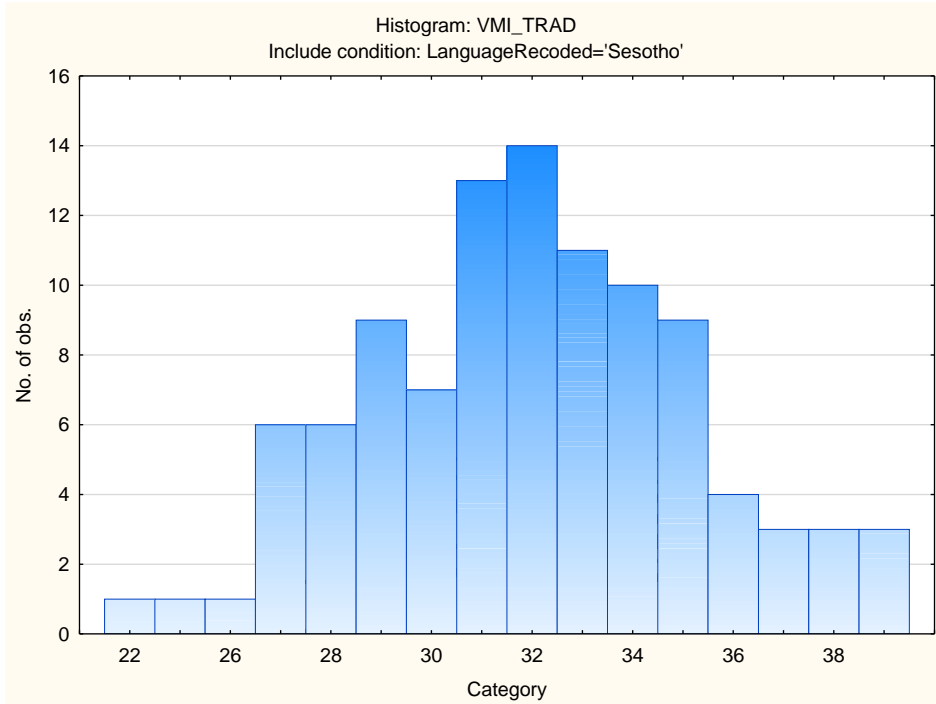


Descriptive statistics on 15FQ+ scales

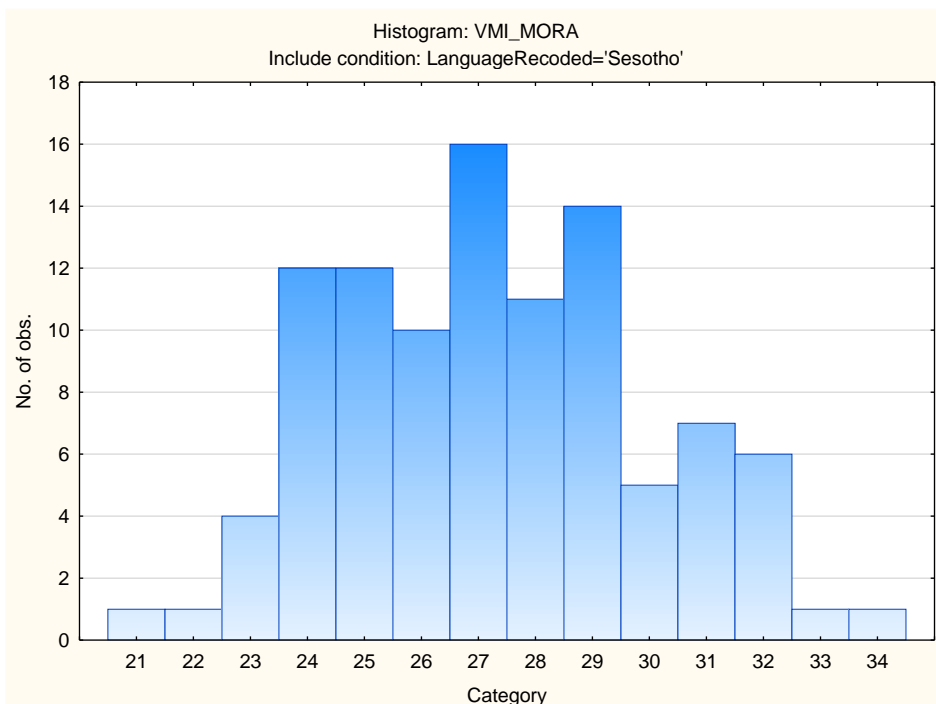
Scale	Scale description	Sample size	Mean	Std.Dev.
TRAD	Traditional	101	31,95050	3,33280
MORA	Moral	101	27,27723	2,72440
INDE	Independence	101	17,12871	3,02544
ETHI	Ethical	101	22,67327	3,23453
ALTR	Altruism	101	43,96040	4,82477
AFFI	Affiliation	101	38,08911	5,27086
AFFE	Affection	101	35,59406	4,92174
NACH	Achievement	101	28,40594	3,22855
FINS	Financial	101	39,00000	6,67982
SAFE	Security	101	18,50495	4,79296
AEST	Aesthetic	101	39,74257	5,70903
INFR	Infrequency	101	0,77228	0,81094
SOCD	Social Desirability	101	27,19802	5,32545
CENT	Central Tendency	101	90,80198	23,83863
AQUI	Acquiescence	101	67,31683	8,09930

Frequency Distributions for VMI Scales

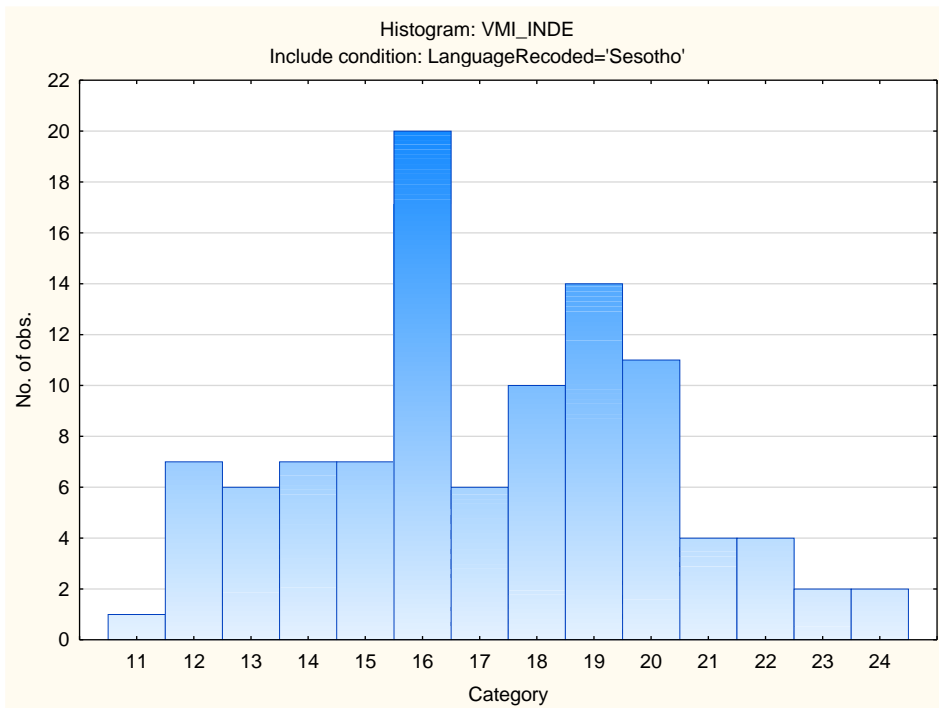
Traditional



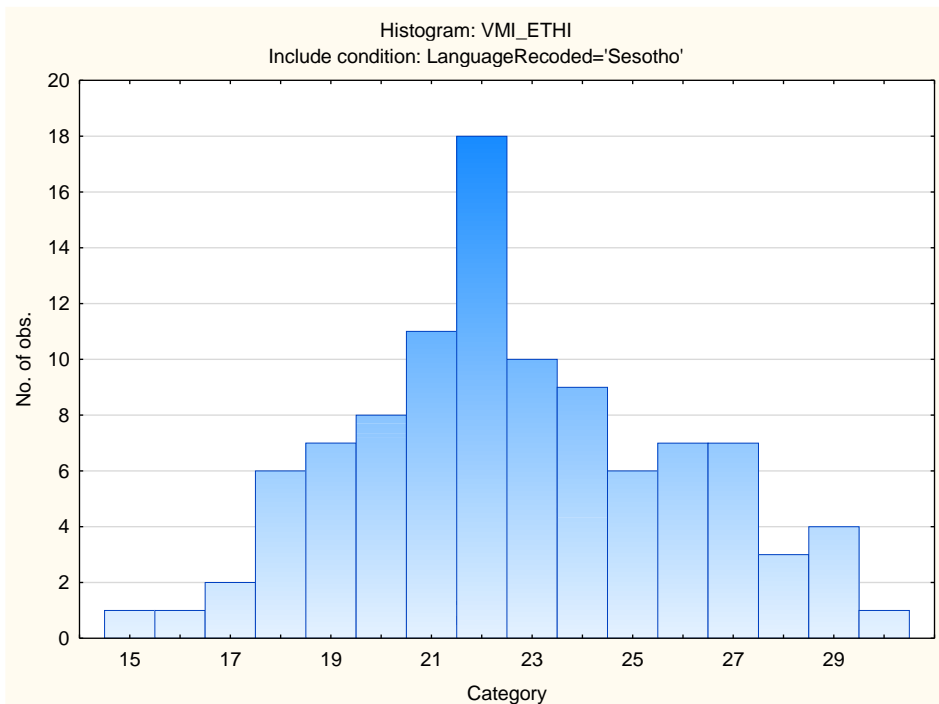
Moral



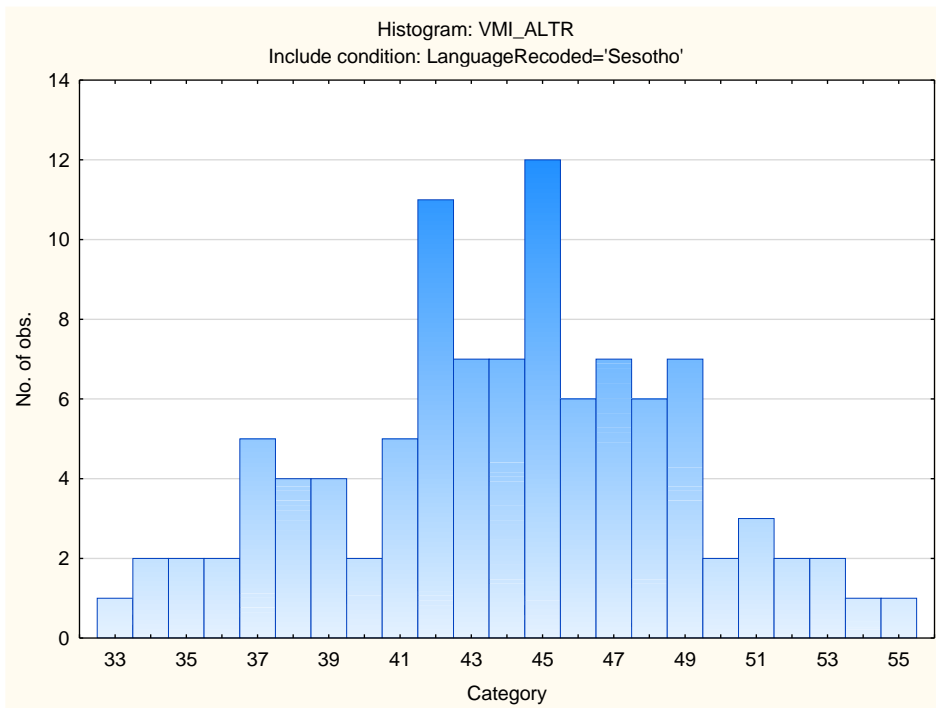
Independence



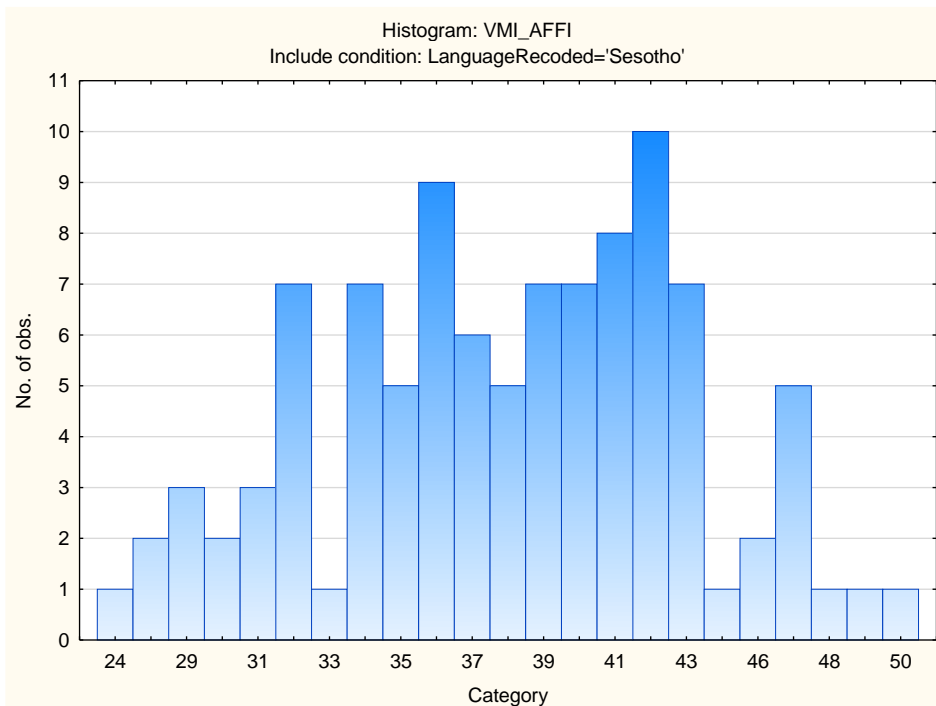
Ethical



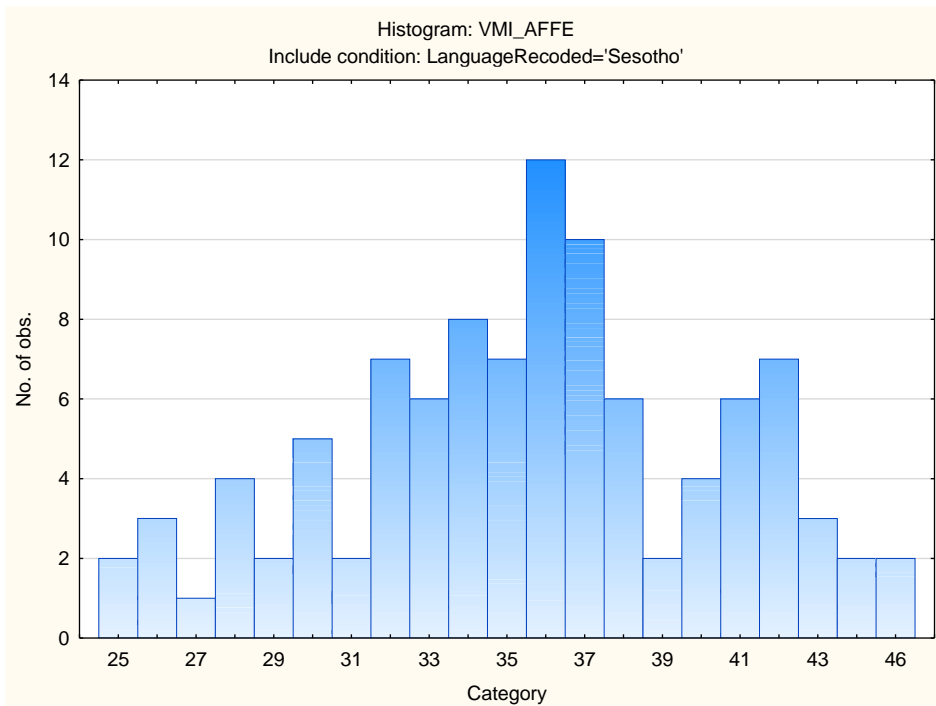
Altruism



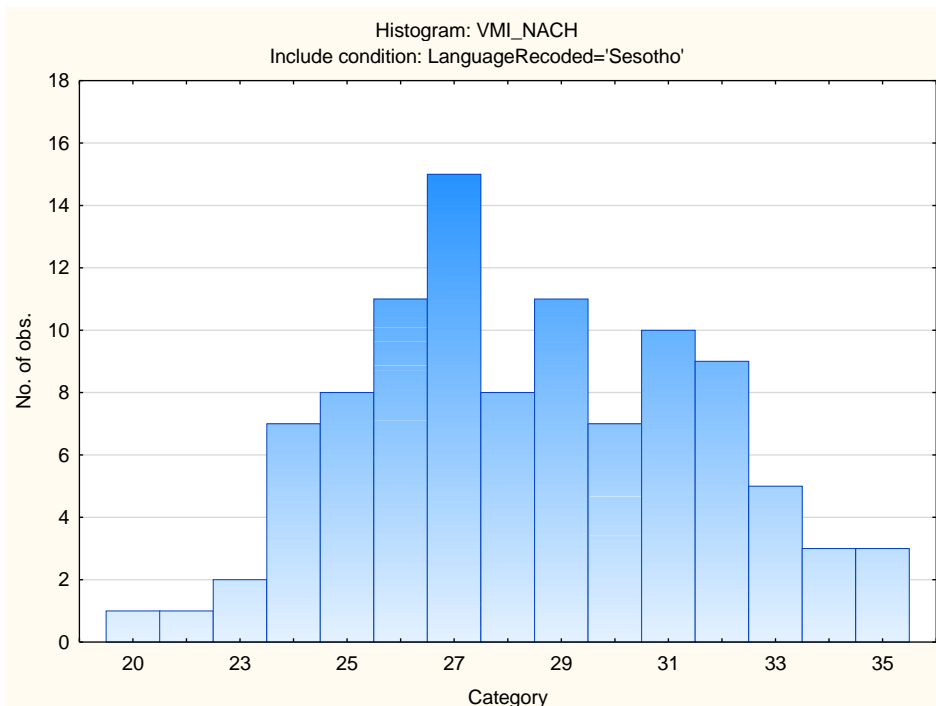
Affiliation



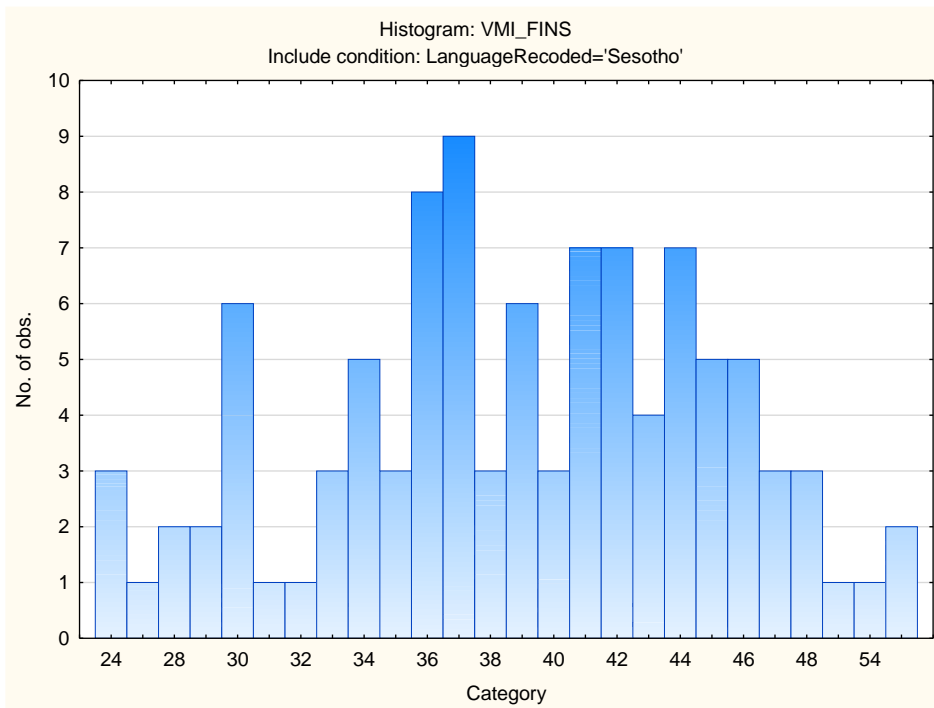
Affection



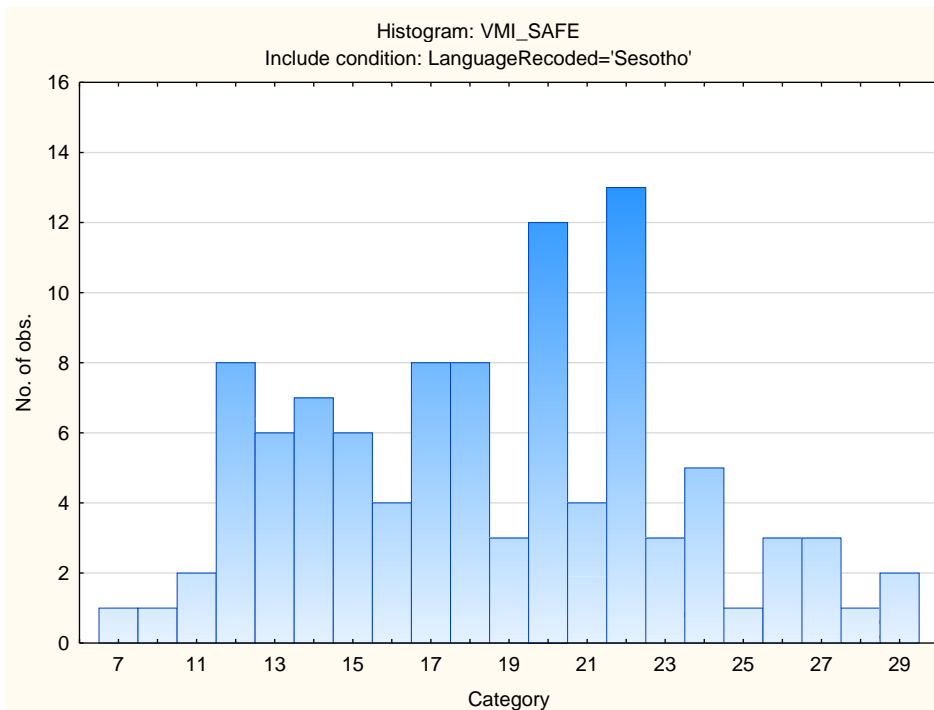
Achievement



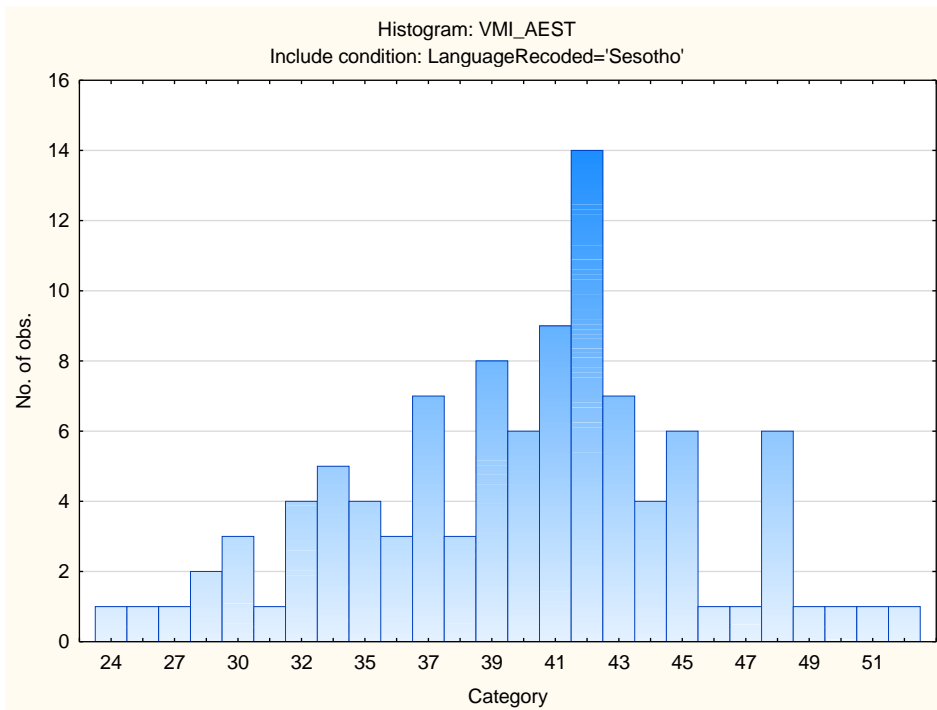
Financial



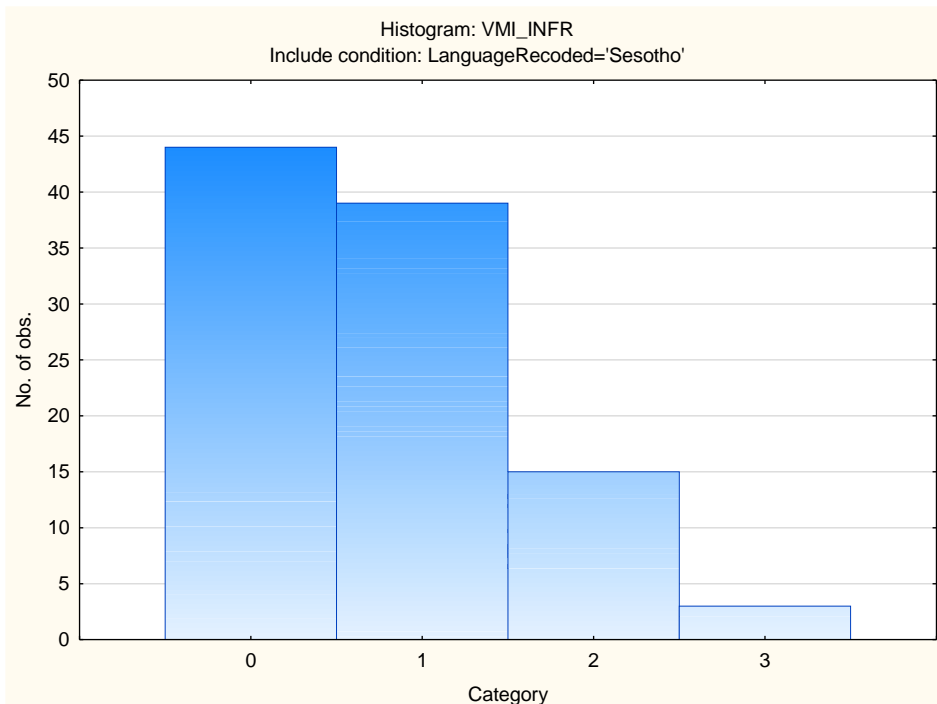
Safety



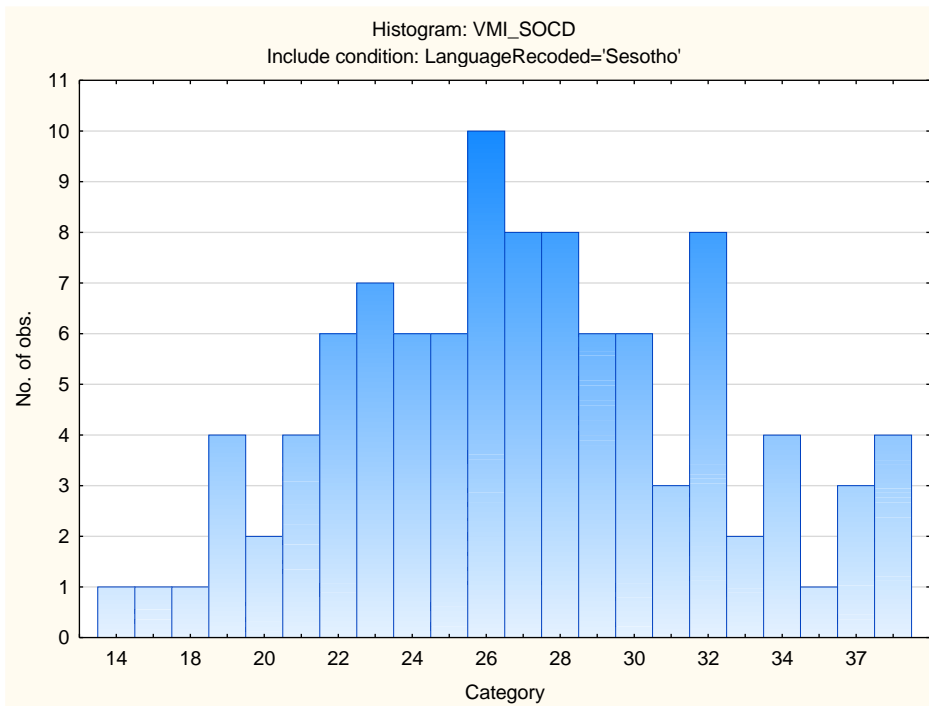
Aesthetic



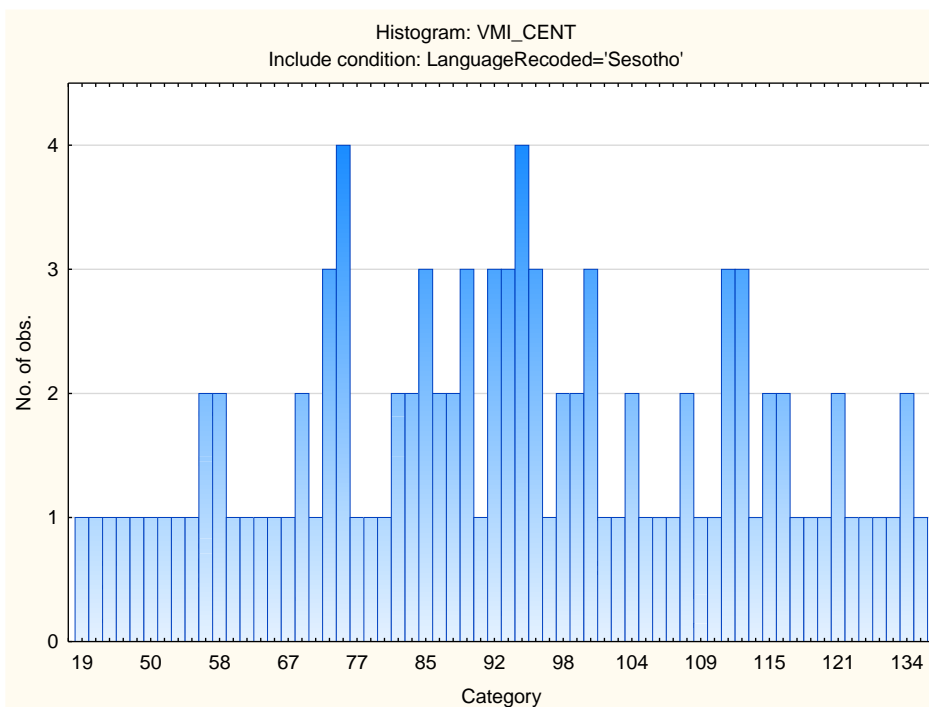
Infrequency



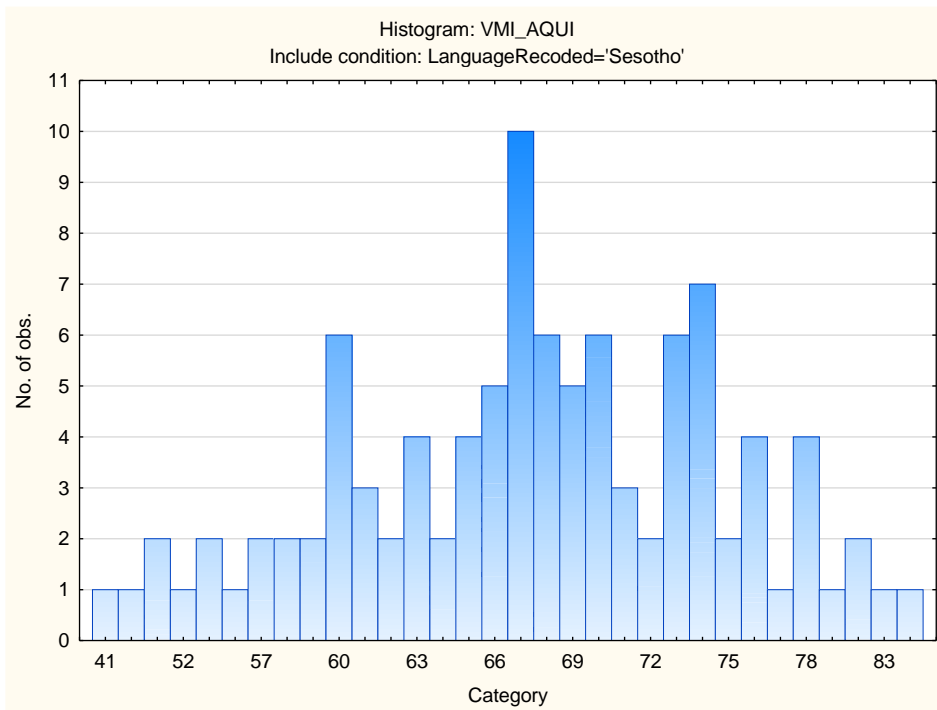
Social Desirability



Central Tendency



Acquiescence



Sten Table

Scale Abbreviation	Scale Name	Raw Scores for Sten Categories									
		1	2	3	4	5	6	7	8	9	10
TRAD	Traditional	22-25	26-26	27-28	29-30	31-31	32-33	34-35	36-36	37-38	39-39
MORA	Moral	21-21	22-23	24-24	25-25	26-27	28-28	29-30	31-31	32-32	33-34
INDE	Independence	11-11	12-12	13-14	15-15	16-17	18-18	19-20	21-21	22-23	24-24
ETHI	Ethical	15-16	17-17	18-19	20-21	22-22	23-24	25-25	26-27	28-29	30-30
ALTR	Altruism	33-34	35-36	37-39	40-41	42-43	44-46	47-48	49-51	52-53	54-55
AFFI	Affiliation	24-27	28-30	31-32	33-35	36-38	39-40	41-43	44-45	46-48	49-50
AFFE	Affection	25-25	26-28	29-30	31-33	34-35	36-38	39-40	41-42	43-45	46-46
NACH	Achievement	20-21	22-23	24-25	26-26	27-28	29-30	31-31	32-33	34-34	35-35
FINS	Financial	24-25	26-28	29-32	33-35	36-39	40-42	43-45	46-49	50-52	53-57
SAFE	Security	7-8	9-11	12-13	14-16	17-18	19-20	21-23	24-25	26-28	29-29
AEST	Aesthetic	24-28	29-31	32-34	35-36	37-39	40-42	43-45	46-48	49-51	52-54
INFR	Infrequency	0--1	0-0	1-1	2-2	3-3					
SOCD	Social Desirability	14-16	17-19	20-21	22-24	25-27	28-29	30-32	33-35	36-37	38-40
CENT	Central Tendency	19-43	44-55	56-66	67-78	79-90	91-102	103-114	115-126	127-138	139-142
AQUI	Acquiescence	41-51	52-55	56-59	60-63	64-67	68-71	72-75	76-79	80-83	84-90