

Norm group: South Africans, race European, updated 2010

Composition of the sample

The sample consisted of 5002 South Africans who gave their race as European (White) tested in the period up to February 2010

Gender composition of the sample

Category	Frequency table: Sex			
	Count	Cumulative Count	Percent	Cumulative Percent
F	1802	1802	36.02559	36.0256
M	3184	4986	63.65454	99.6801
Missing	16	5002	0.31987	100.0000

Educational composition of the sample

Category	Frequency table: Education			
	Count	Cumulative Count	Percent	Cumulative Percent
Grade 12	1551	1551	31.00760	31.0076
Degree	777	2328	15.53379	46.5414
Post Graduate	704	3032	14.07437	60.6158
Technikon	485	3517	9.69612	70.3119
University diploma	374	3891	7.47701	77.7889
Grade 10 or 11	152	4043	3.03878	80.8277
Vocational Training	166	4209	3.31867	84.1463
Diploma	72	4281	1.43942	85.5858
Certificate	18	4299	0.35986	85.9456
Missing	703	5002	14.05438	100.0000

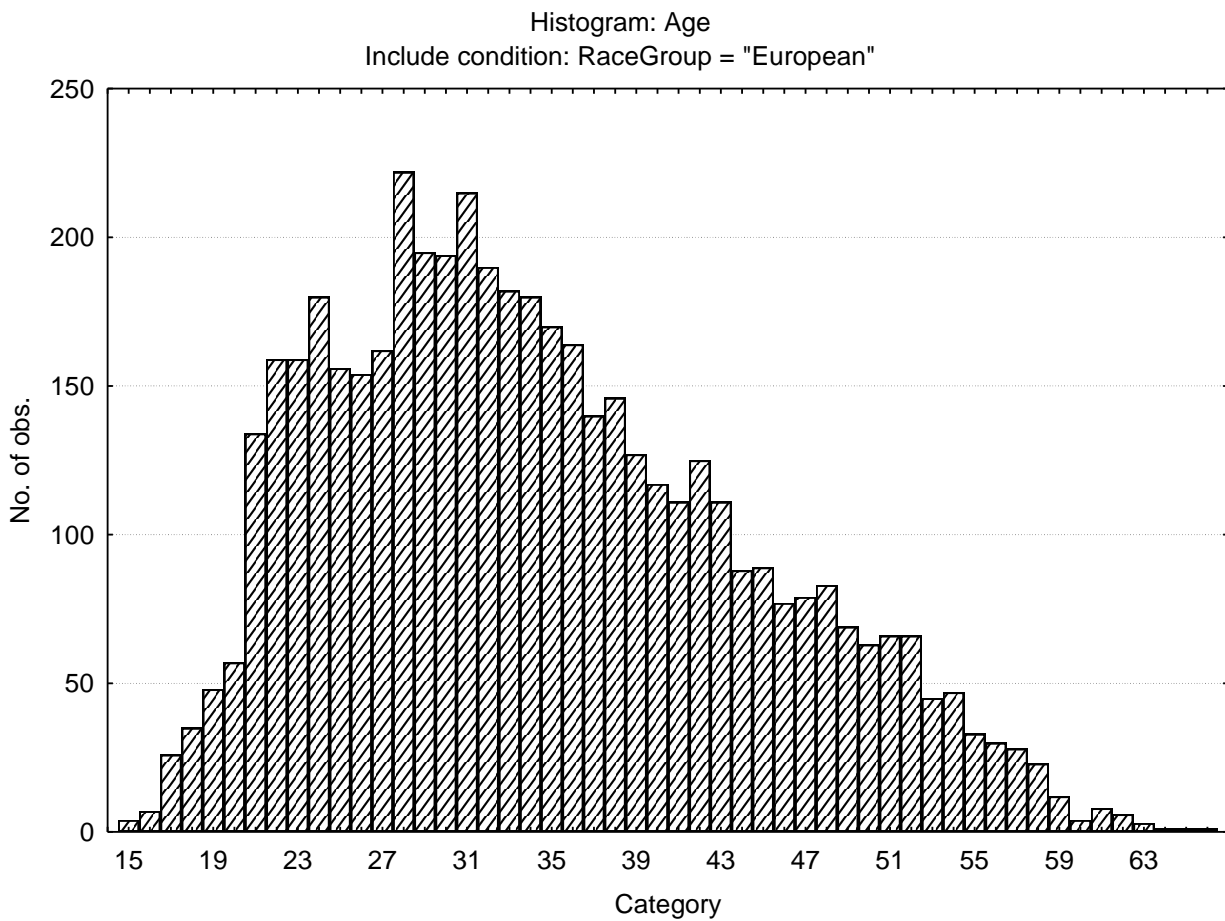
Language composition of the sample

Category	Frequency table: Language			
	Count	Cumulative Count	Percent	Cumulative Percent
English	2300	2300	45.98161	45.9816
Afrikaans	2399	4699	47.96082	93.9424
isiZulu	5	4704	0.09996	94.0424

Category	Frequency table: Language			
	Count	Cumulative Count	Percent	Cumulative Percent
isiXhosa	5	4709	0.09996	94.1423
Sesotho	2	4711	0.03998	94.1823
Setswana	1	4712	0.01999	94.2023
Sepedi	3	4715	0.05998	94.2623
Xitsonga	1	4716	0.01999	94.2823
Tshivenda	1	4717	0.01999	94.3023
siSwati	1	4718	0.01999	94.3223
Missing	284	5002	5.67773	100.0000

Age composition of the sample

Variable	Descriptive					
	Mean	Std.Dev	Minimum	Maximum	N	No.cases Missing
Age	34.47621	9.785972	15.00000	71.00000	4792	210



N16-2

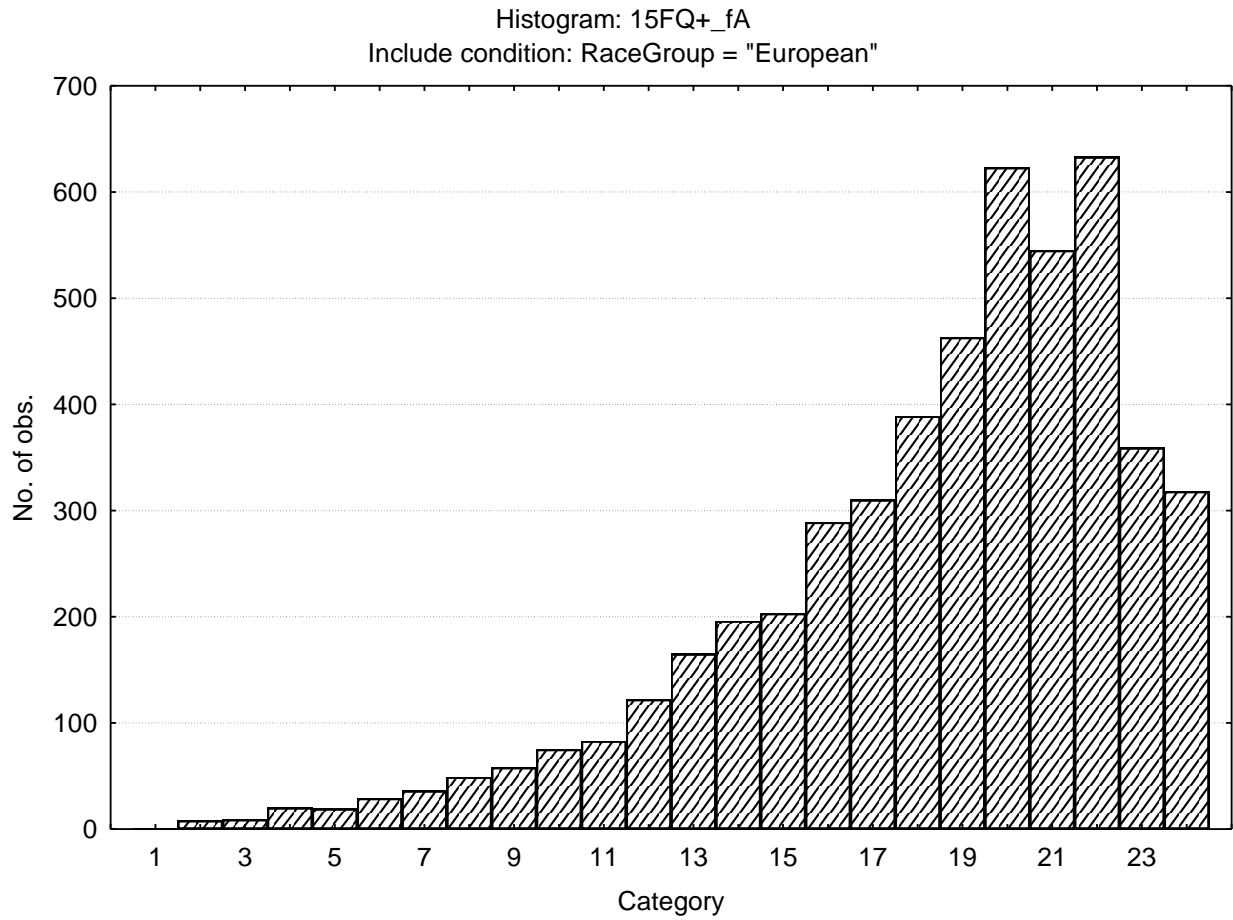
Updated 13 July 2010

Basic statistics on 15FQPlus scales

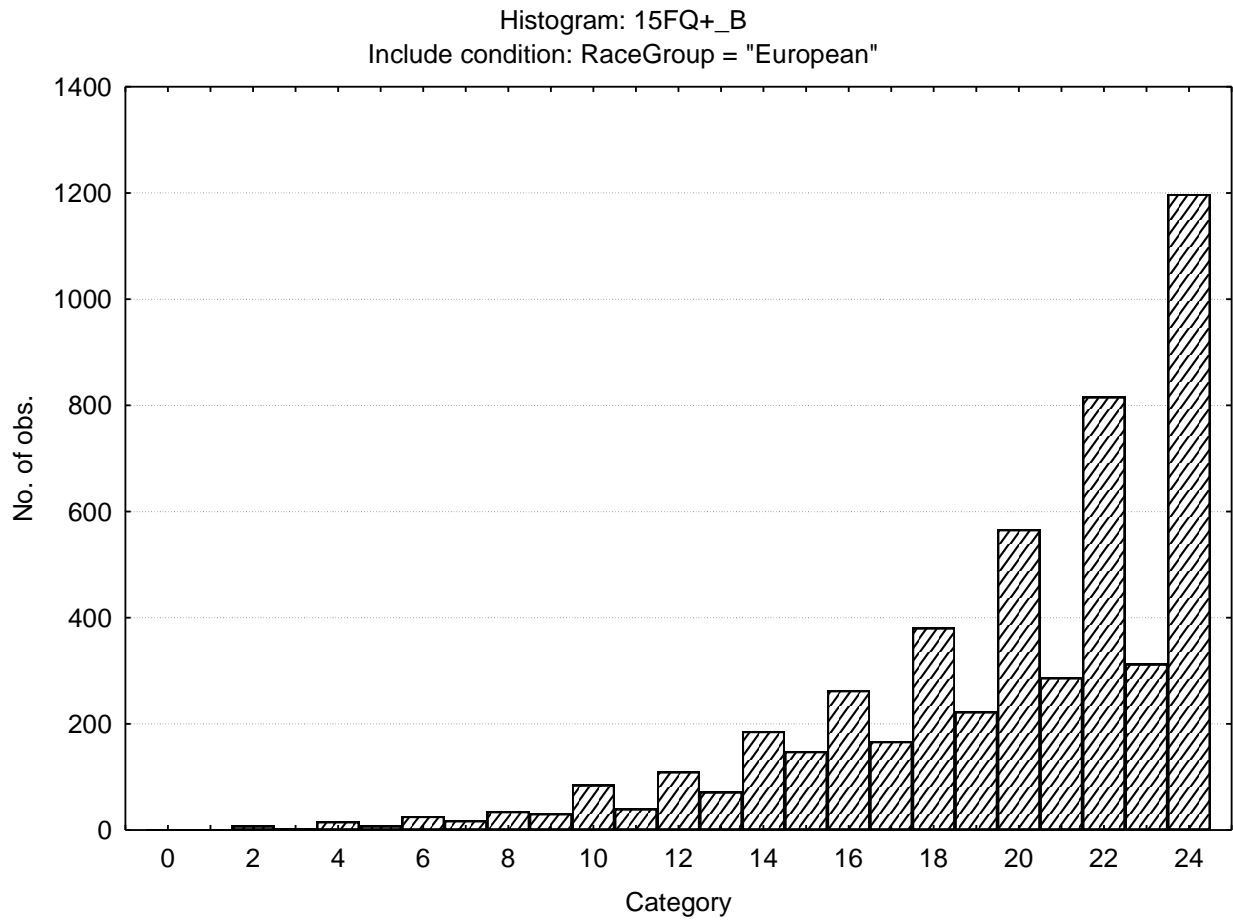
Variable		Descriptive statistics					
		Mean	Std.Dev	Minimum	Maximum	N	No.cases Missing
15FQ+_fA	<i>Distant aloof - empathic</i>	18.39924	4.26688	1.000000	24.0000	5002	0
15FQ+_B	<i>Intellectance</i>	19.73870	4.29844	0.000000	24.0000	5002	0
15FQ+_fC	<i>Affected by feelings - emotionally stable</i>	17.01160	5.11776	0.000000	24.0000	5002	0
15FQ+_fE	<i>Accommodating - Dominant</i>	16.57497	4.89466	0.000000	24.0000	5002	0
15FQ+_fF	<i>Sober serious - Enthusiastic</i>	14.58297	5.75890	0.000000	24.0000	5002	0
15FQ+_fG	<i>Expedient - Conscientious</i>	18.75770	5.04069	0.000000	24.0000	5002	0
15FQ+_fH	<i>Retiring - Socially bold</i>	14.38784	6.44950	0.000000	24.0000	5002	0
15FQ+_fI	<i>Tough Minded - Tender minded</i>	14.27869	5.39634	0.000000	24.0000	5002	0
15FQ+_fL	<i>Trusting - Suspicious</i>	8.36445	5.10315	0.000000	24.0000	5002	0
15FQ+_fM	<i>Concrete - Abstract</i>	10.33826	4.57329	0.000000	24.0000	5002	0
15FQ+_fN	<i>Direct - Restrained</i>	18.09096	5.02152	0.000000	24.0000	5002	0
15FQ+_fO	<i>Self-assured - Apprehensive</i>	12.71411	5.96254	0.000000	24.0000	5002	0
15FQ+_fQ1	<i>Conventional - Radical</i>	8.72431	5.26116	0.000000	24.0000	5002	0
15FQ+_fQ2	<i>Group - orientated - Self-sufficient</i>	8.54178	5.47671	0.000000	24.0000	5002	0
15FQ+_fQ3	<i>Informal- self disciplined</i>	20.07257	3.54993	1.000000	24.0000	5002	0
15FQ+_fQ4	<i>Composed - tense driven</i>	10.92443	6.16881	0.000000	24.0000	5002	0
15FQ+_SD	<i>Social desirability</i>	9.84346	3.63442	0.000000	16.0000	5002	0
15FQ+_CT	<i>Central Tendency</i>	12.56457	13.79869	0.000000	146.0000	5002	0
15FQ+_INF	<i>Infrequency</i>	1.36106	1.55753	0.000000	15.0000	5002	0
15FQ+_EIQ	<i>Derived score: Emotional Intelligence</i>	22.69932	5.11440	0.000000	30.0000	5002	0
15FQ+_WA	<i>Derived score: Work attitude</i>	26.86405	4.64465	0.000000	32.0000	5002	0
15FQ+_fGOOD	<i>Faking good</i>	6.68992	2.78102	0.000000	12.0000	5002	0
15FQ+_fBAD	<i>Faking bad</i>	4.75750	2.64582	0.000000	13.0000	5002	0

Frequency distributions of 15FQPlus scales

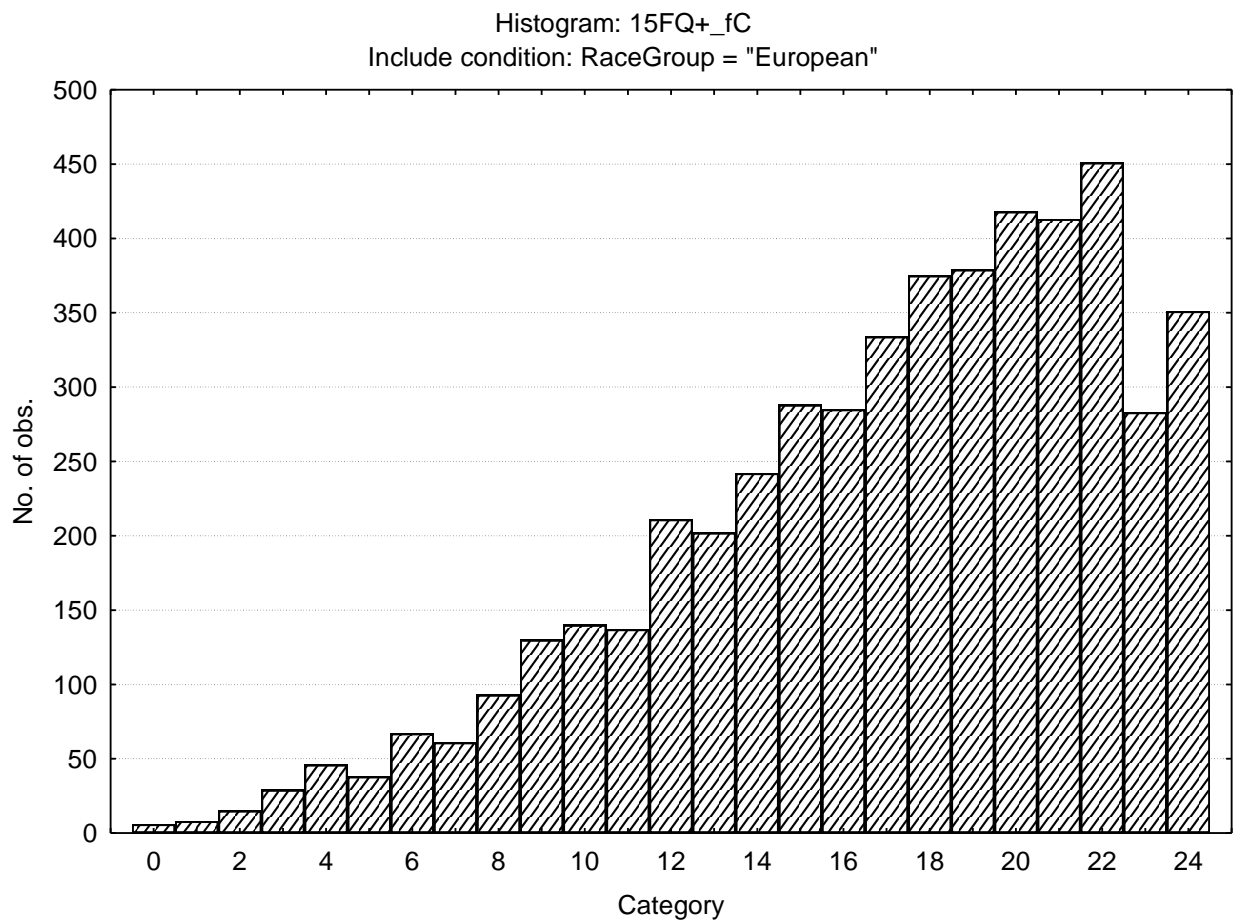
Distant aloof - Empathic



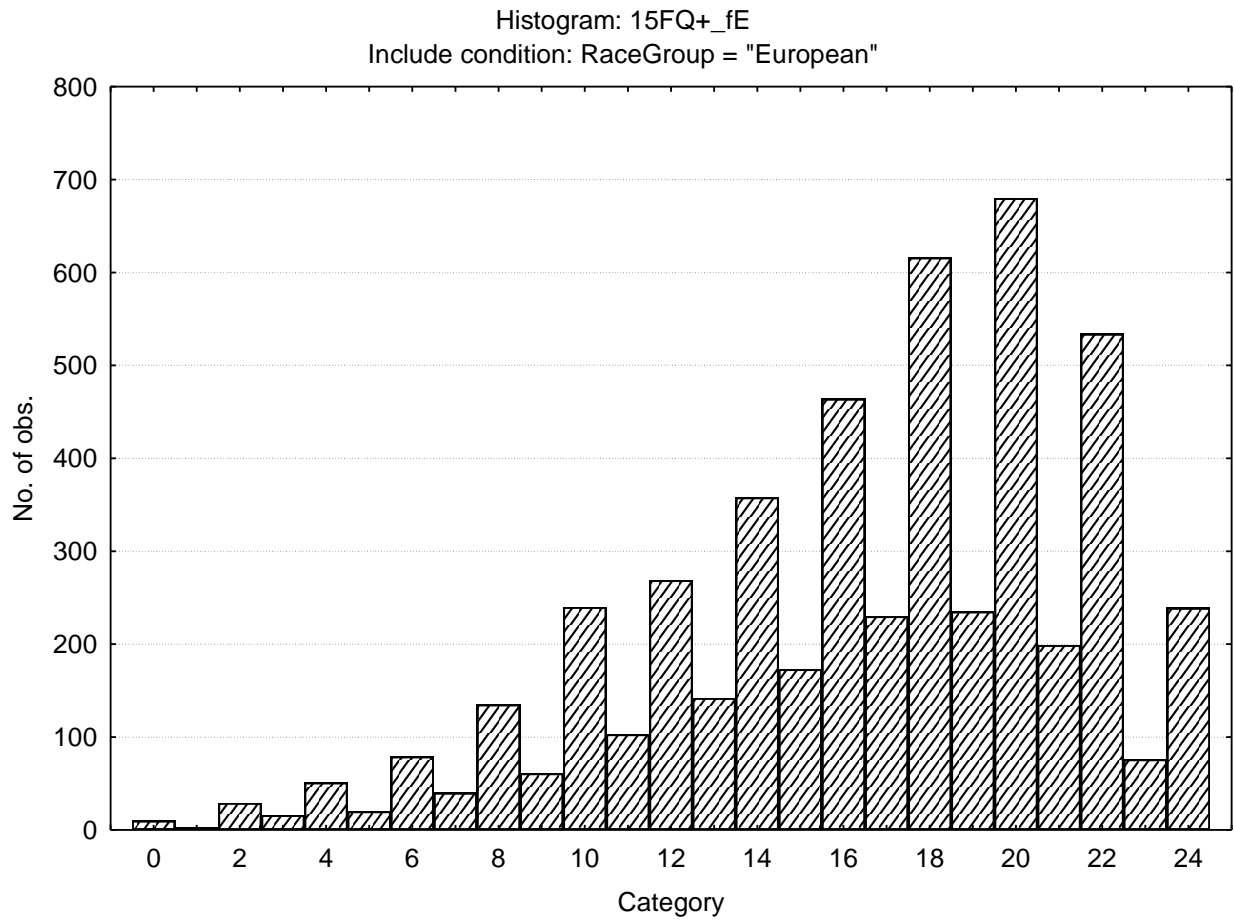
Intellectance



Affected by feelings – Emotionally stable



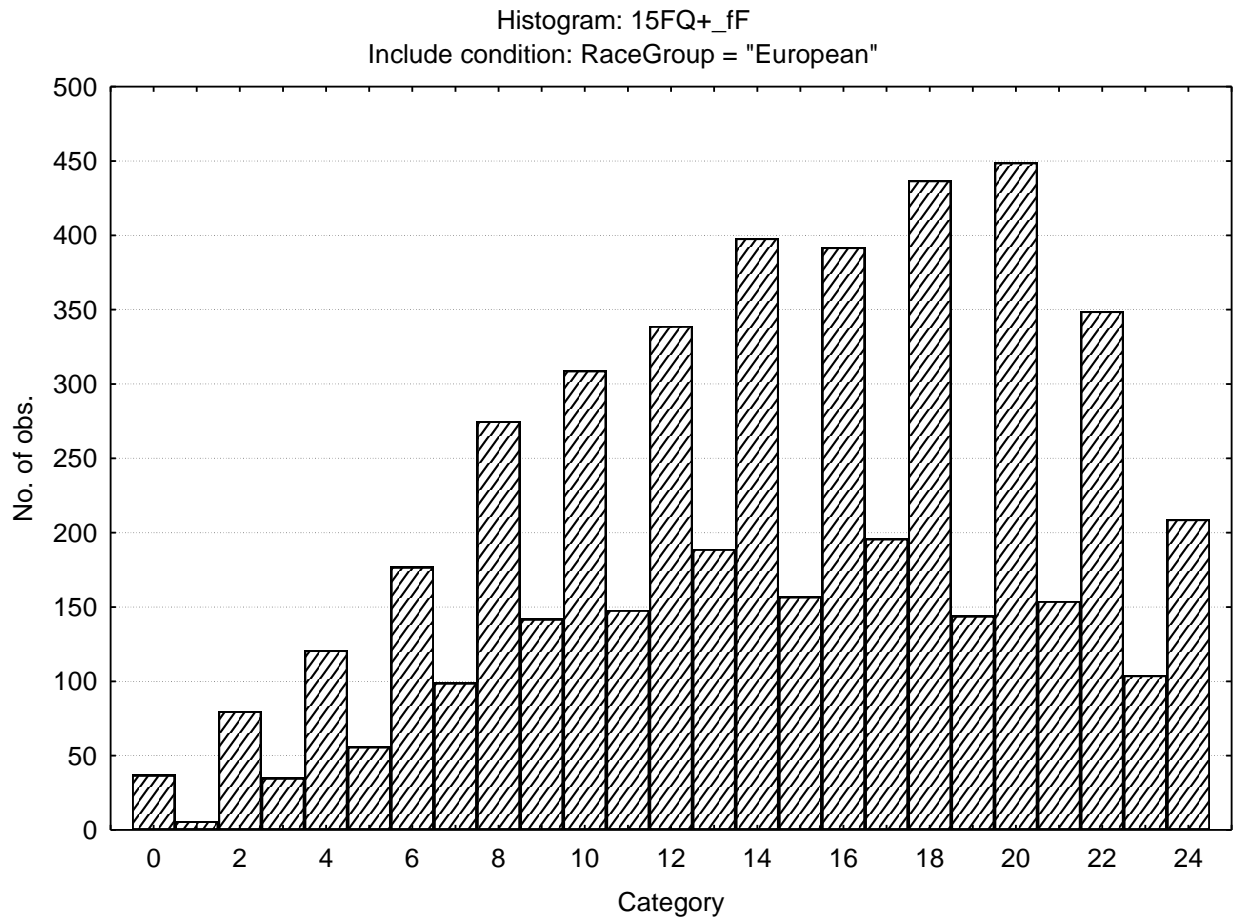
Accommodating - Dominant



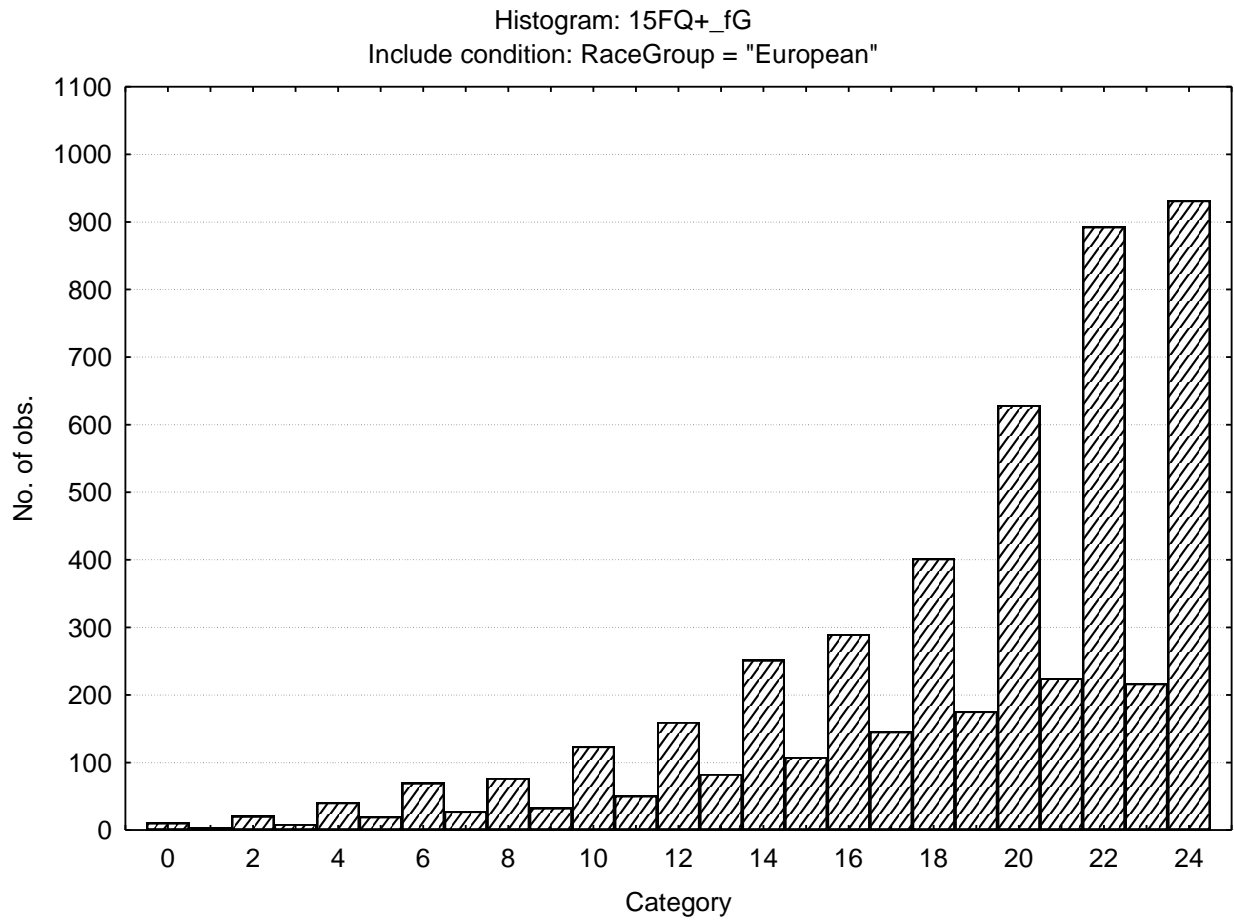
N16-7

Updated 13 July 2010

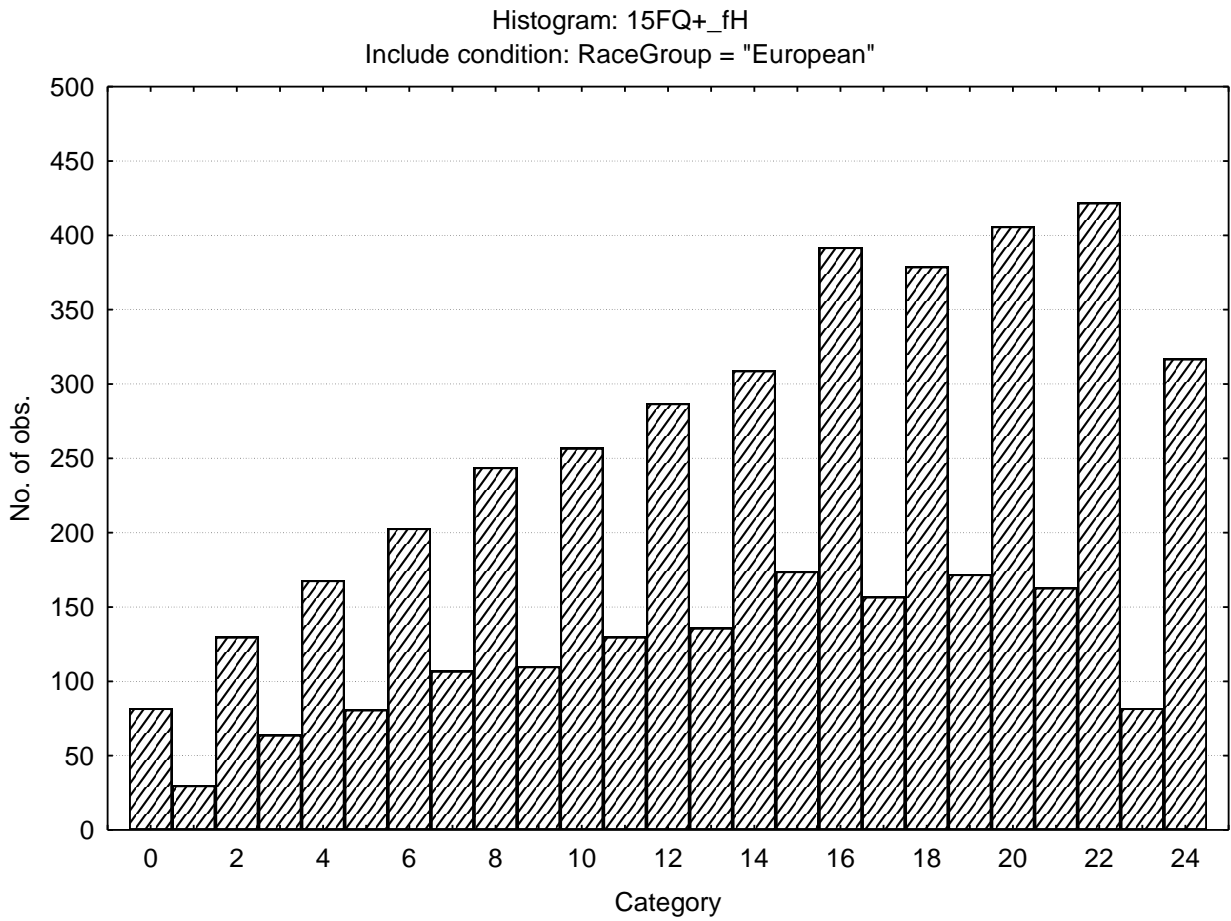
Sober serious - Enthusiastic



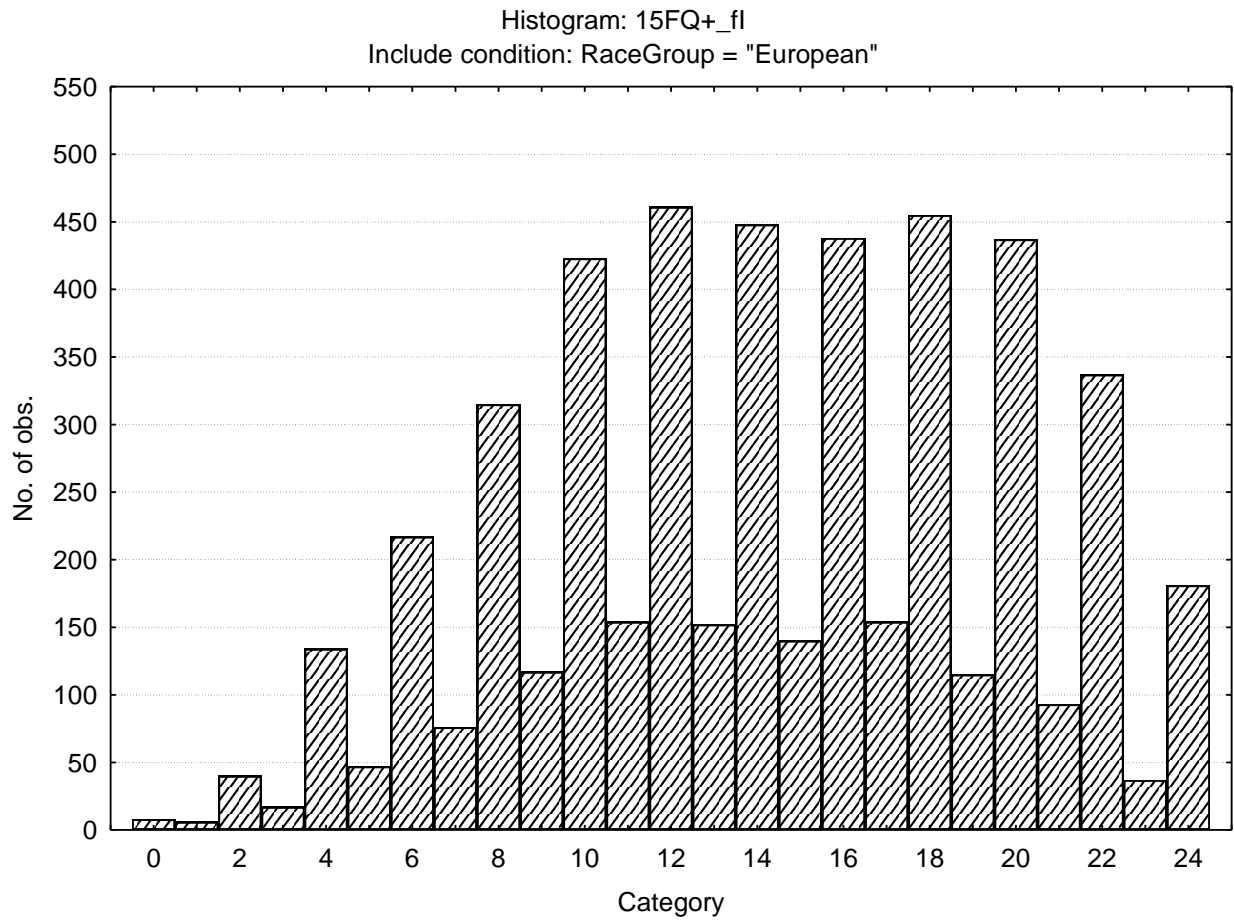
Expedient - Conscientious



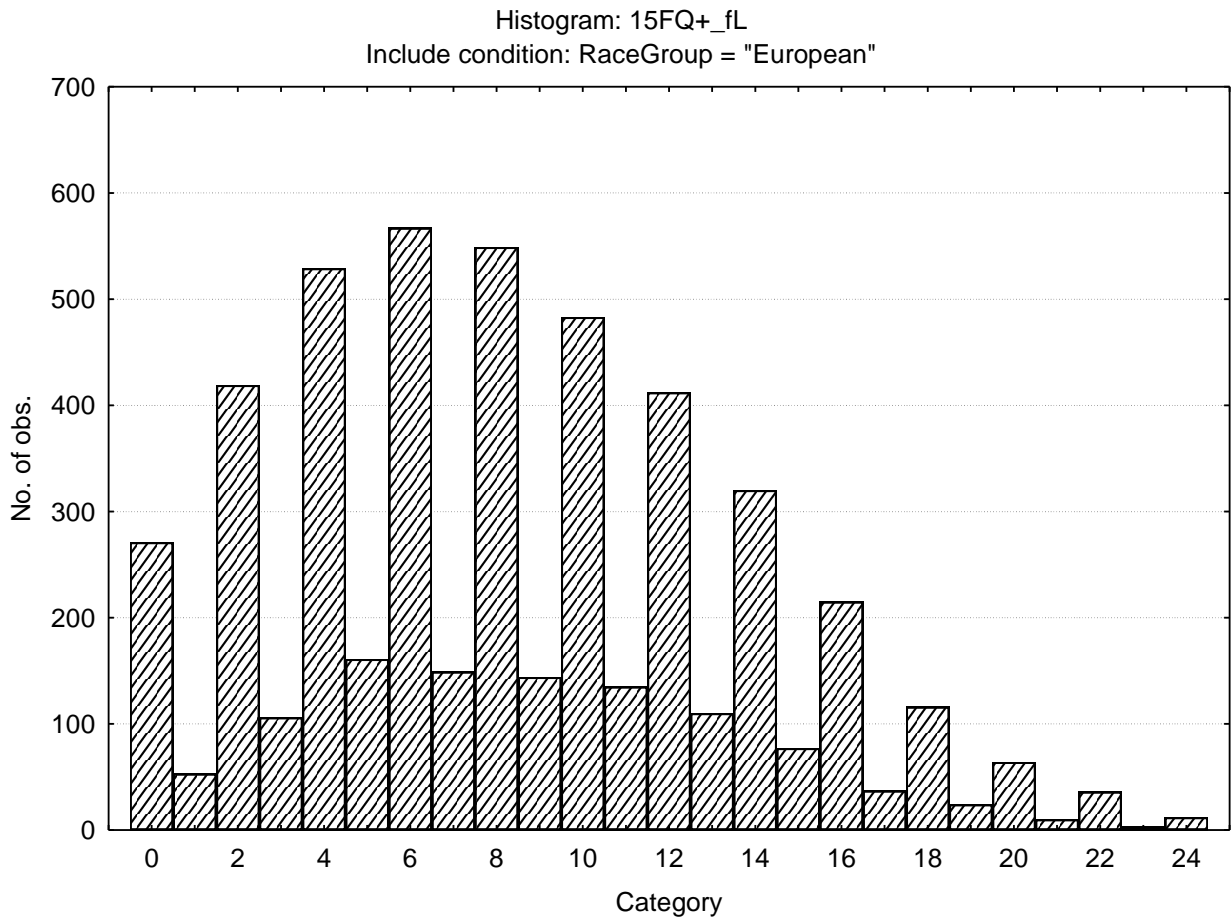
Retiring - Socially bold



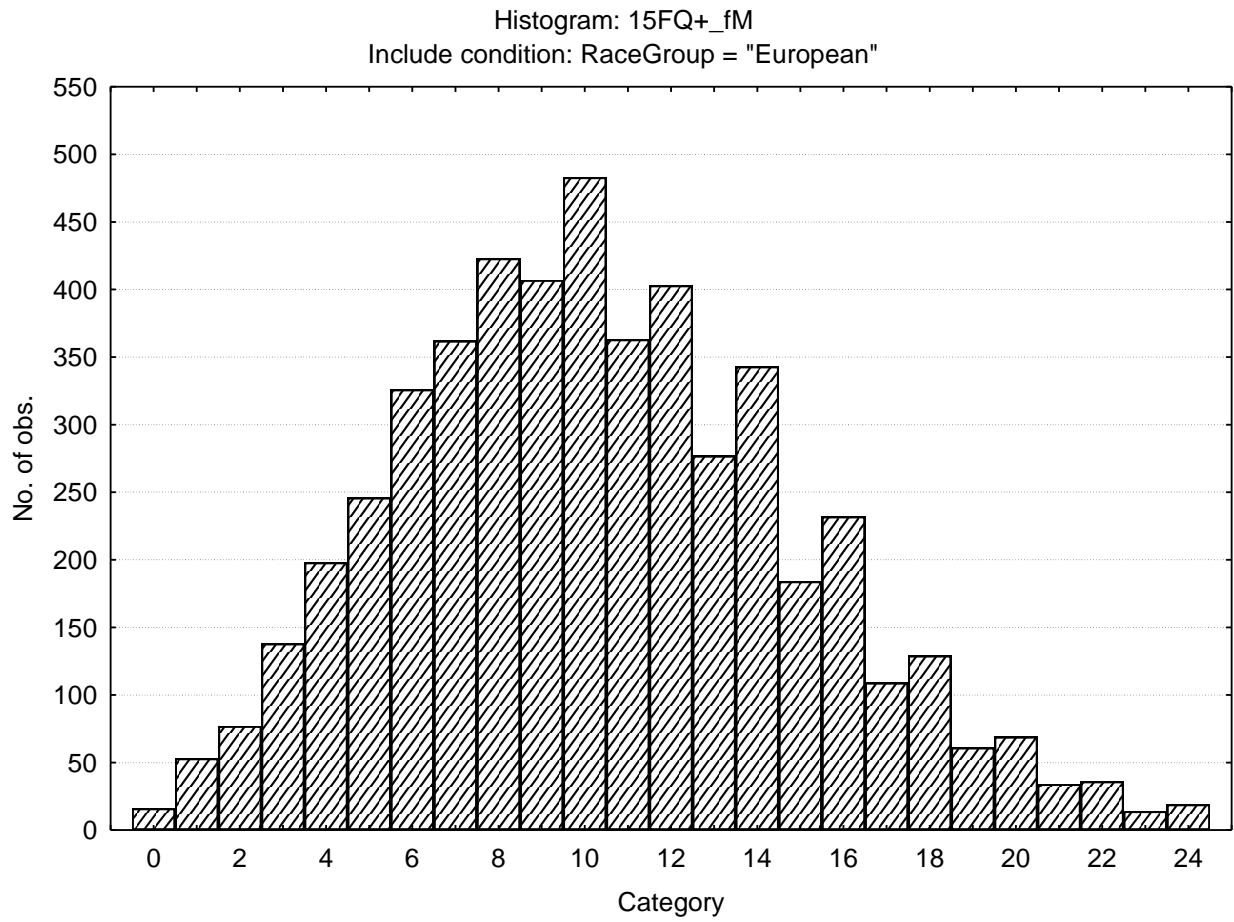
Tough minded - Tender minded



Trusting - Suspicious



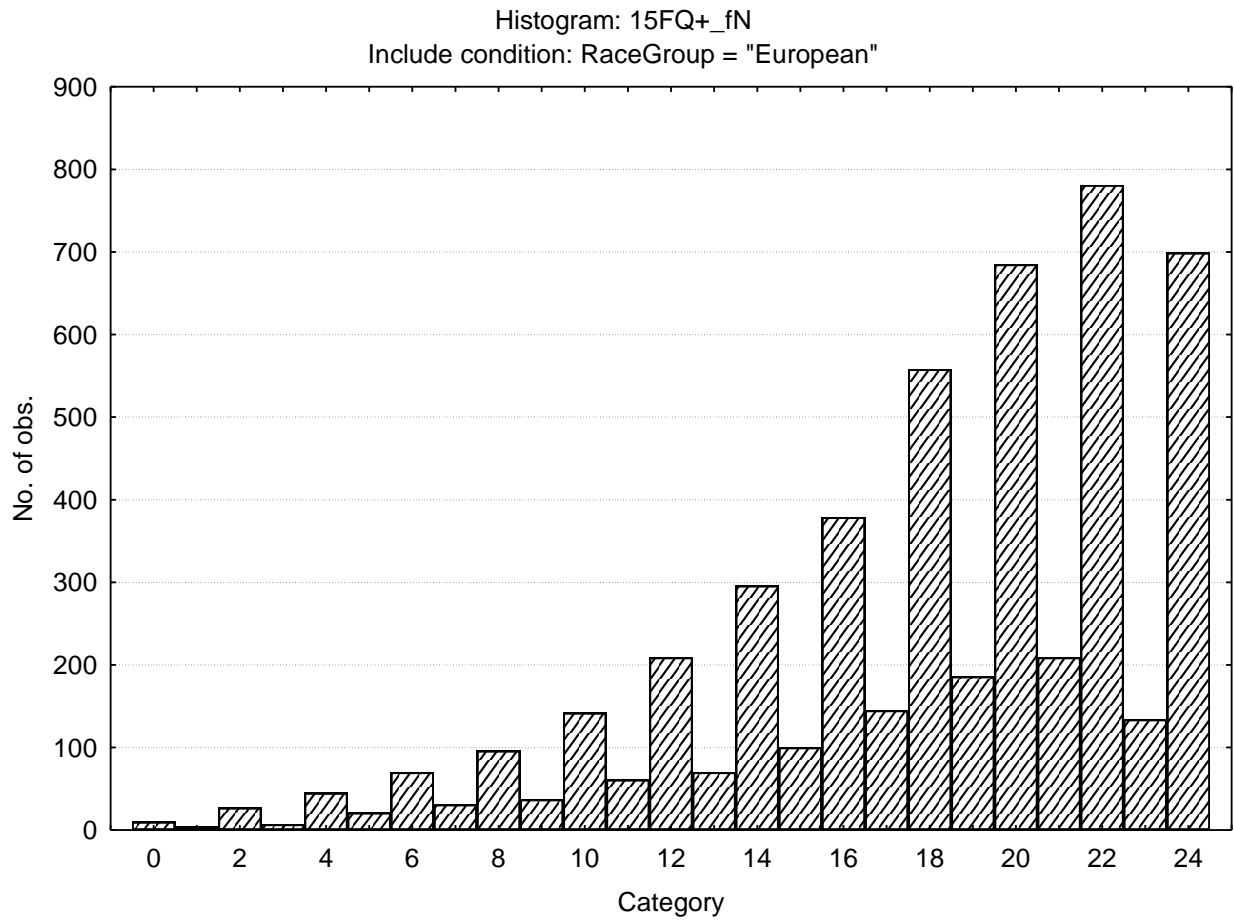
Concrete - Abstract



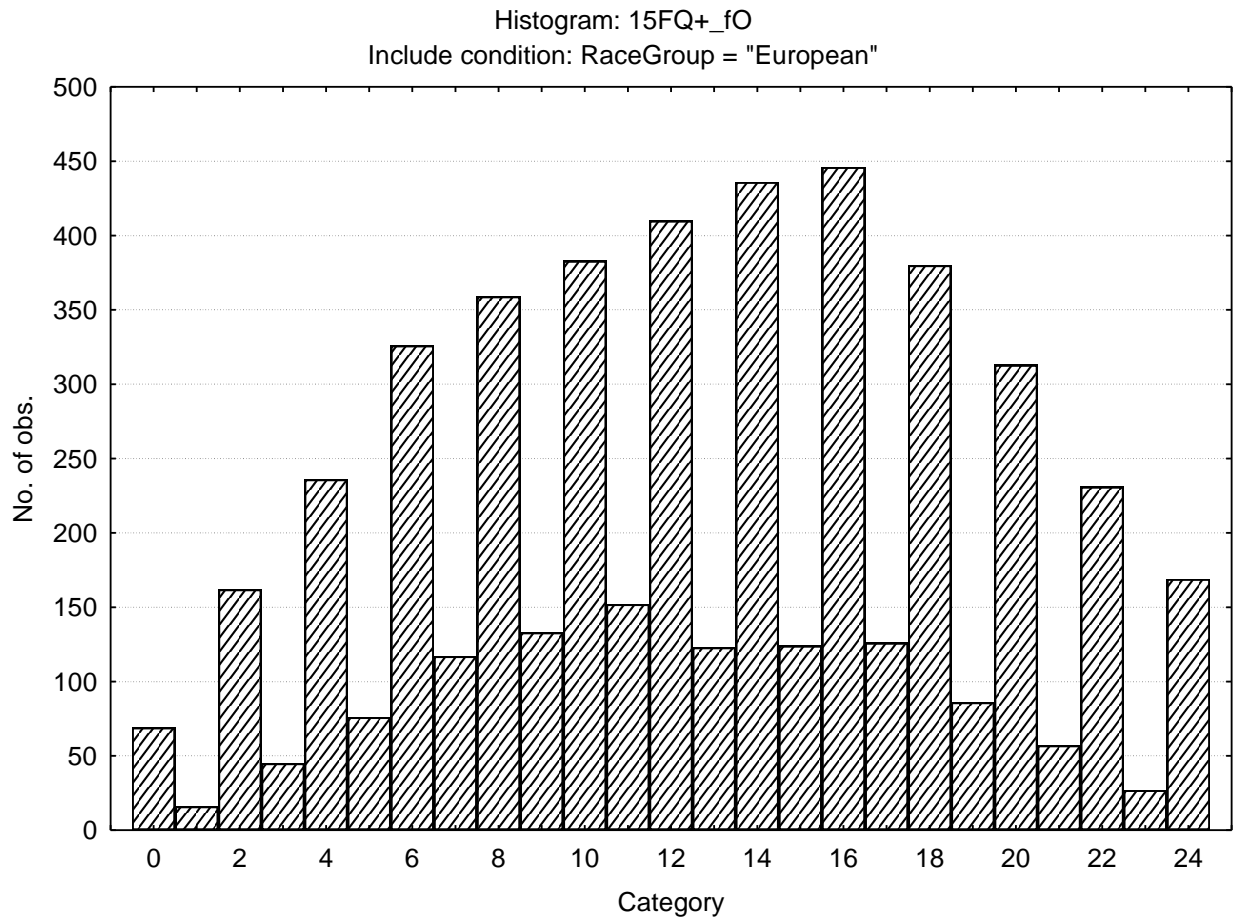
N16-13

Updated 13 July 2010

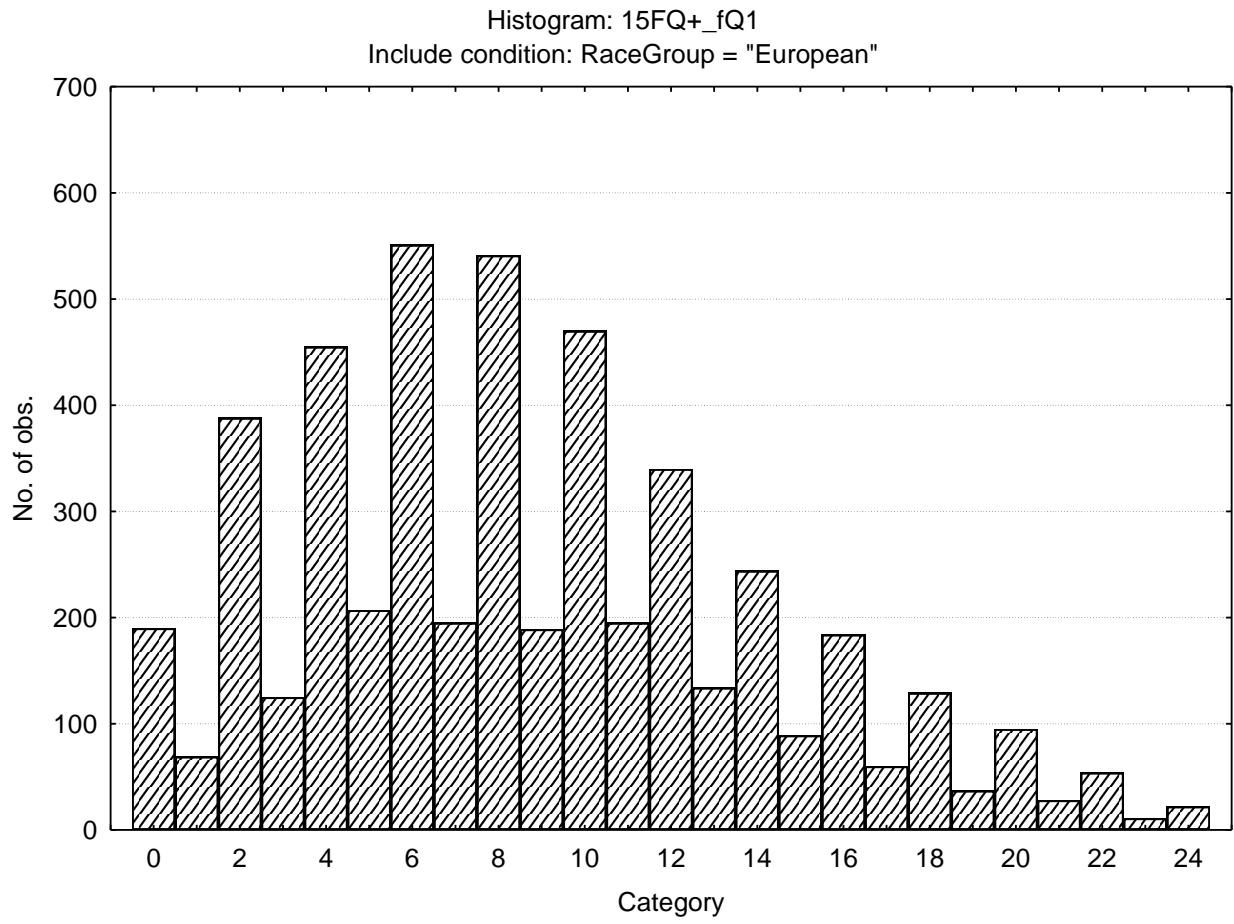
Direct - Restrained



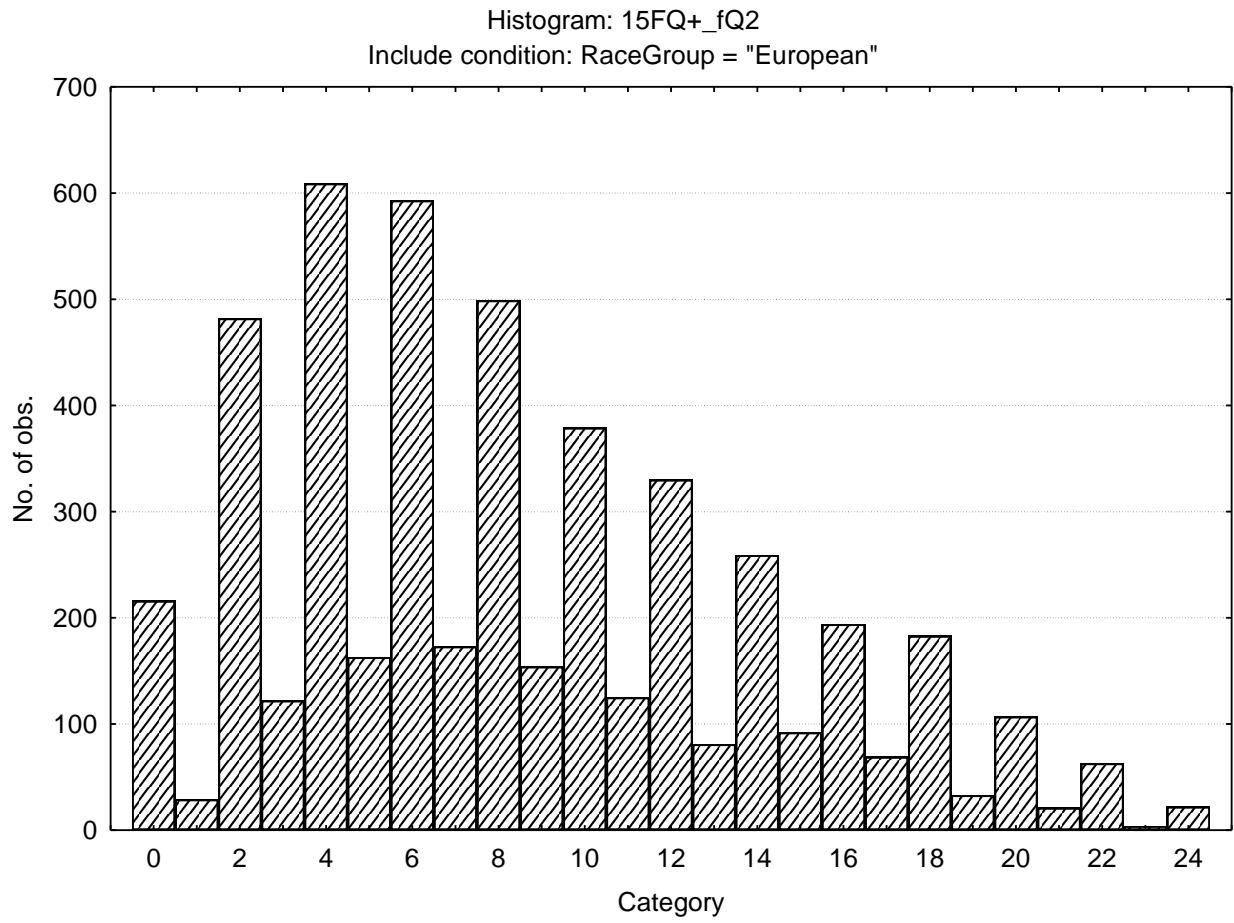
Self assured - Apprehensive



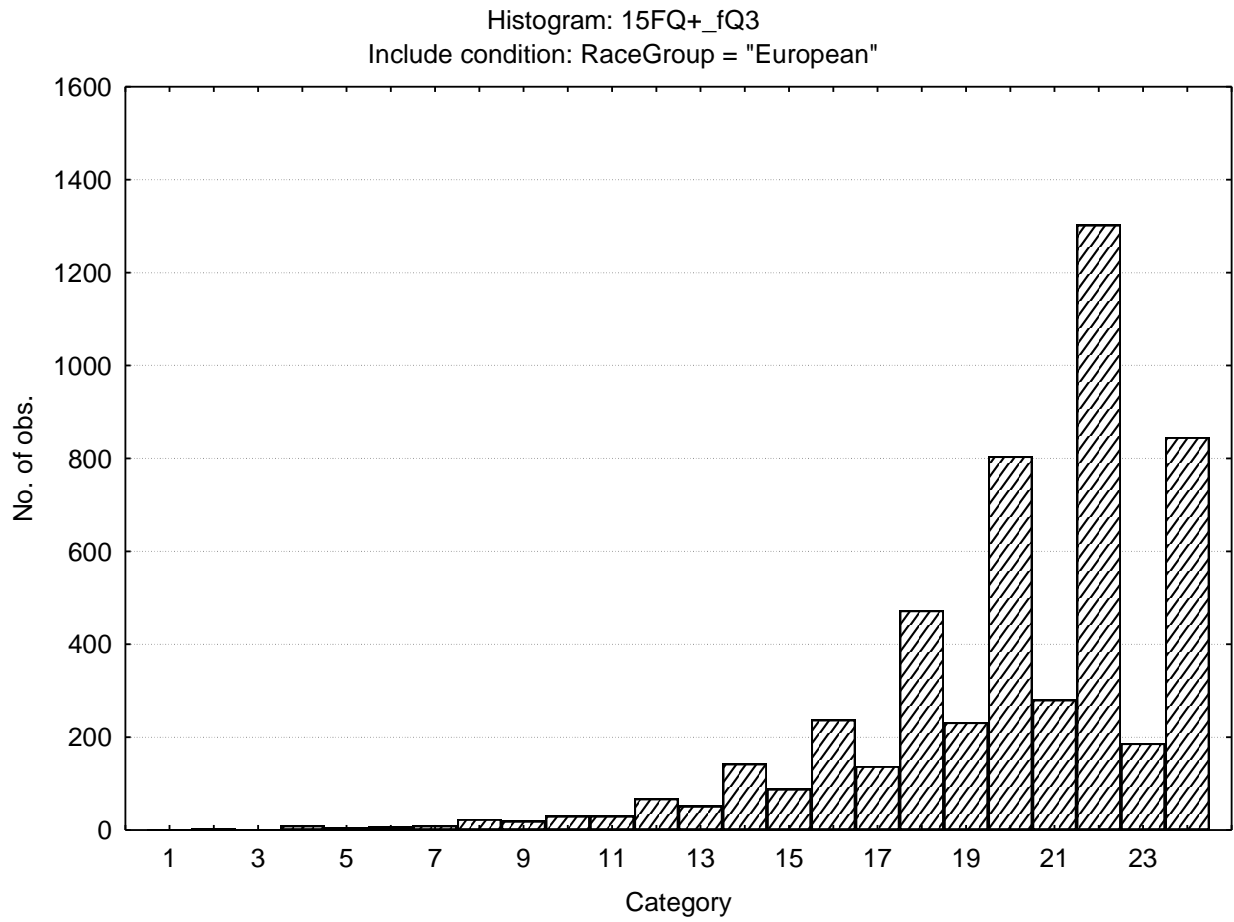
Conventional - Radical



Group orientated – Self-sufficient



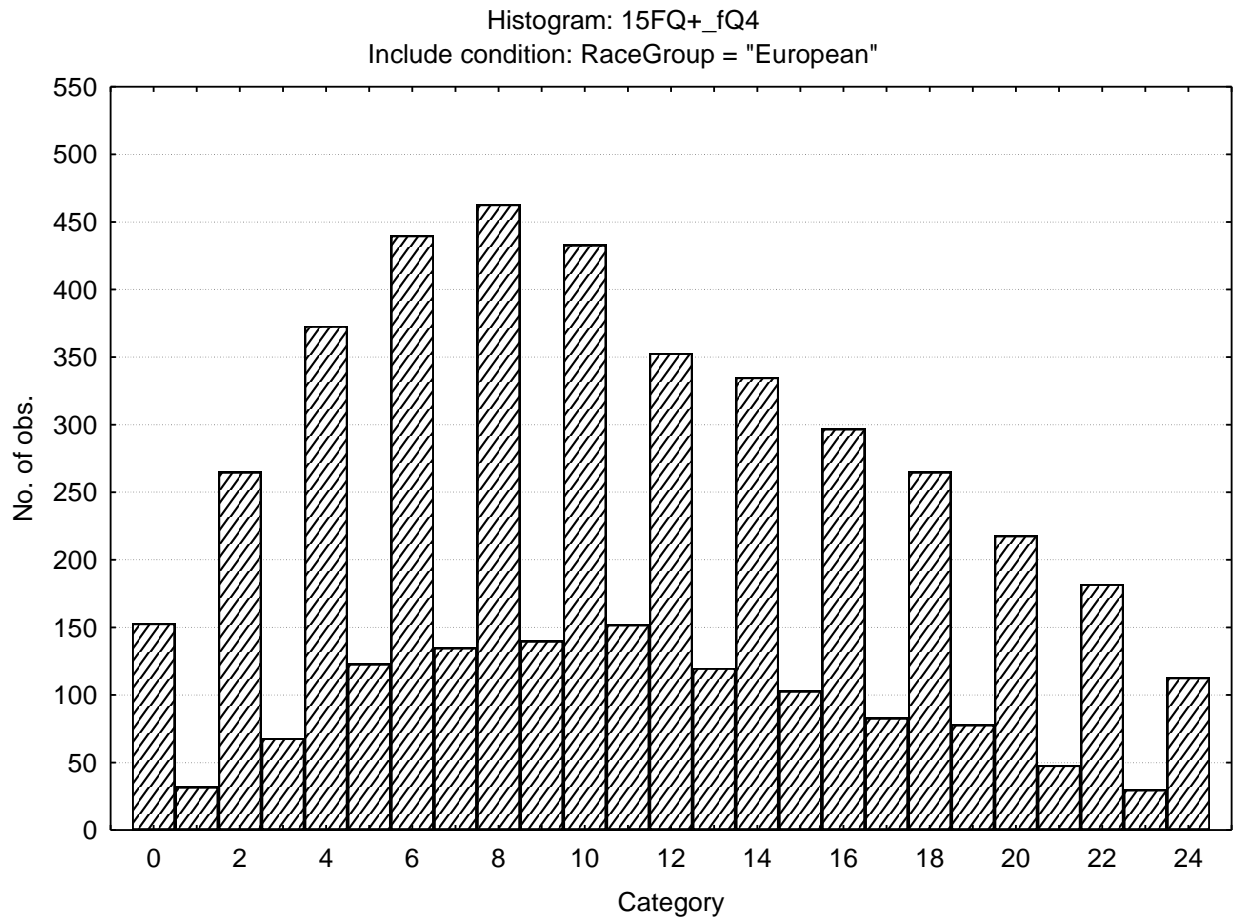
Informal – Self disciplined



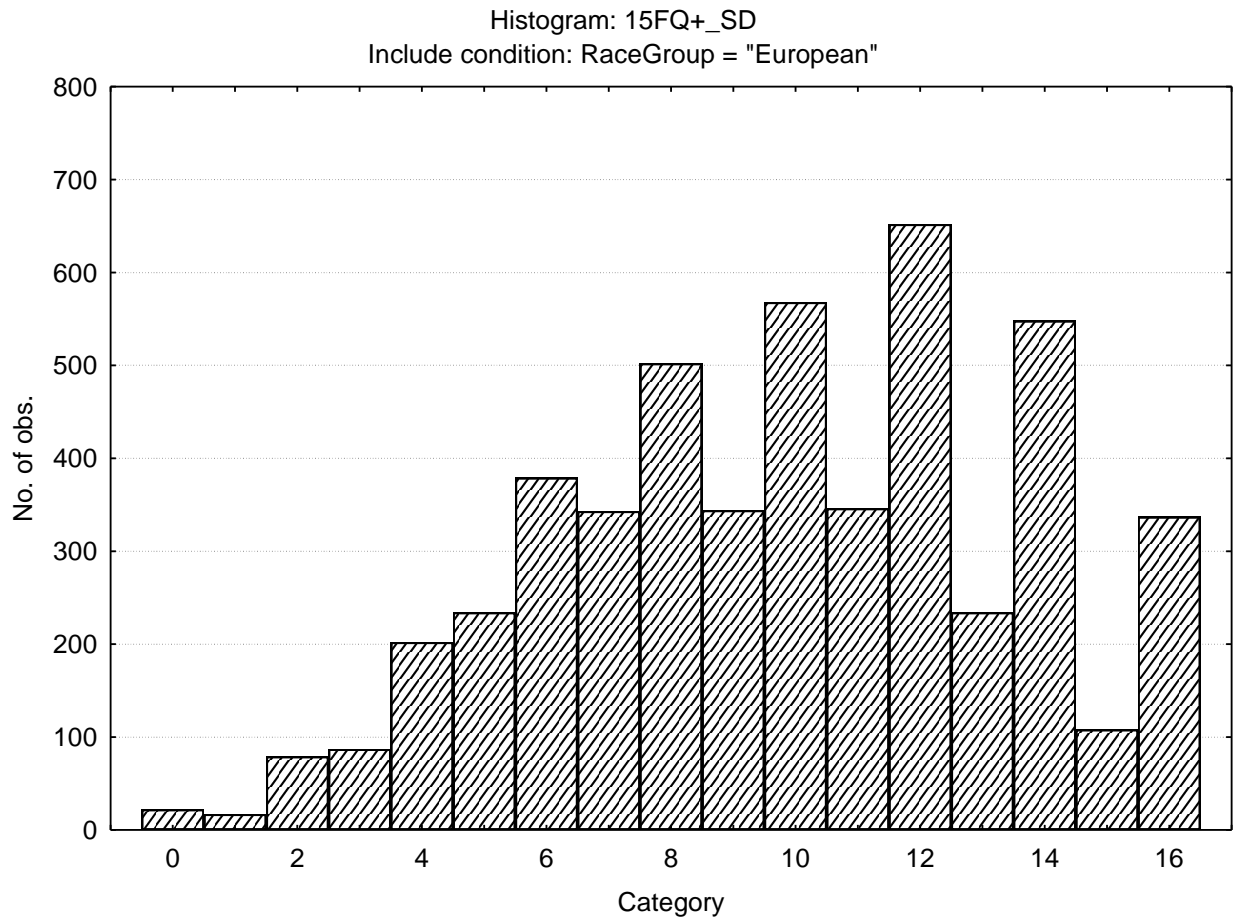
N16-18

Updated 13 July 2010

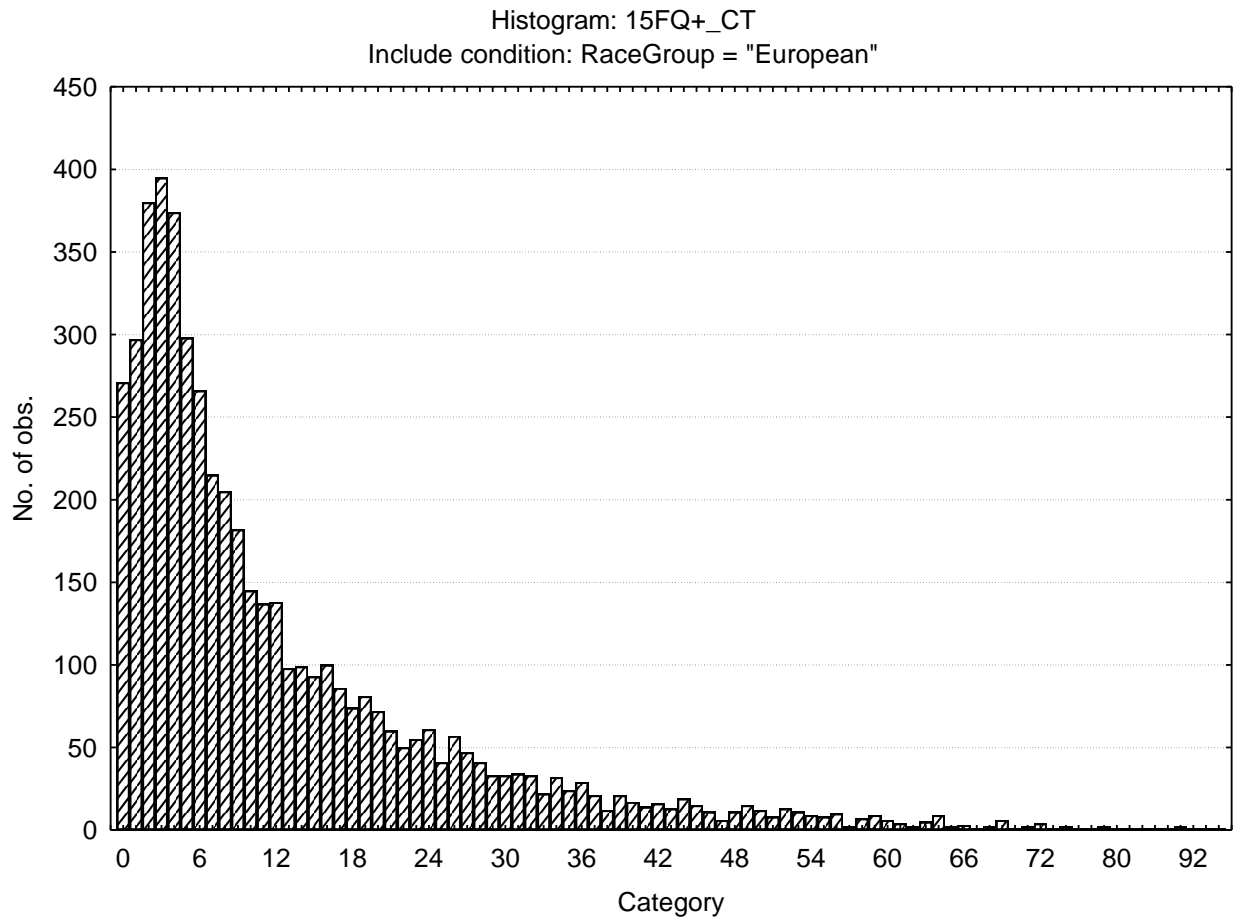
Composed - Tense driven



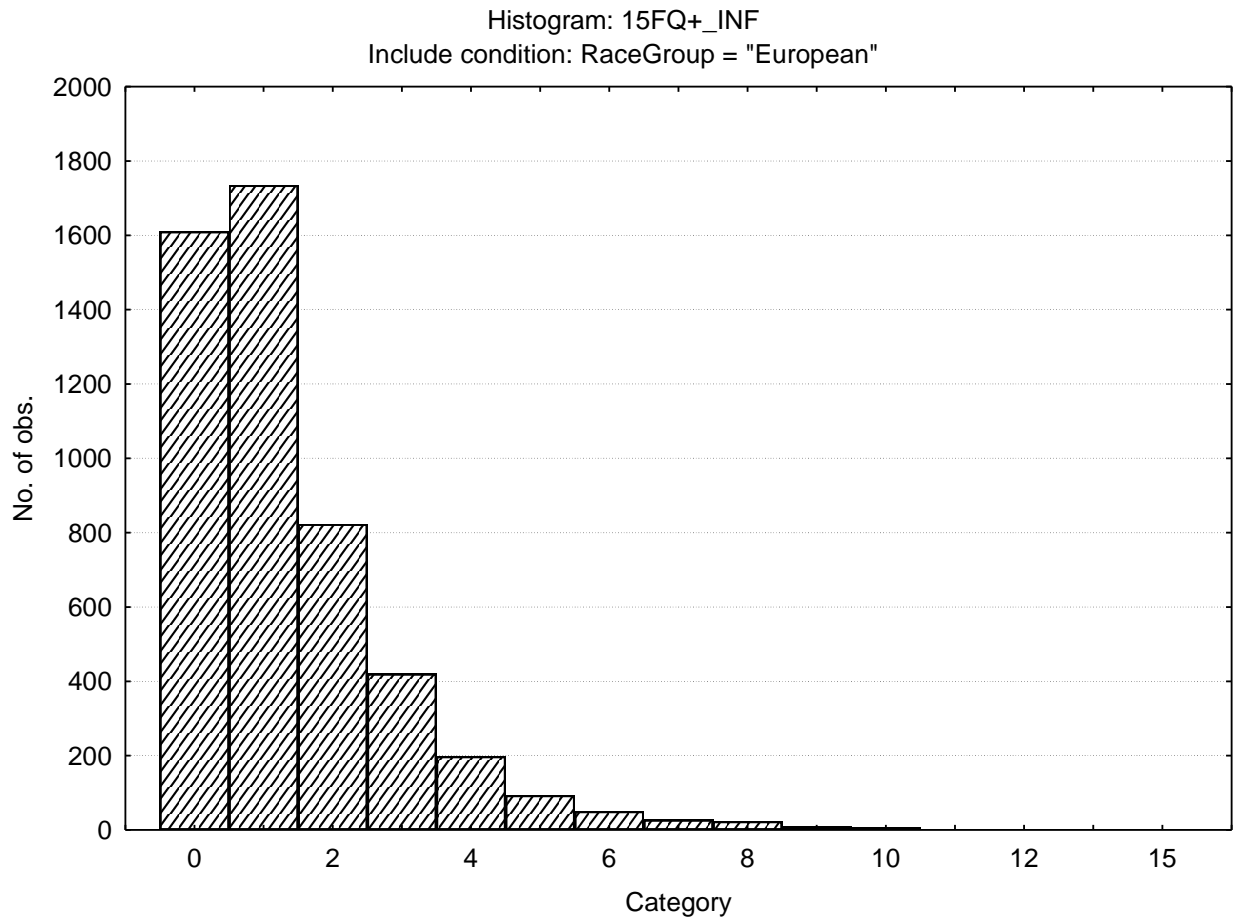
Social desirability



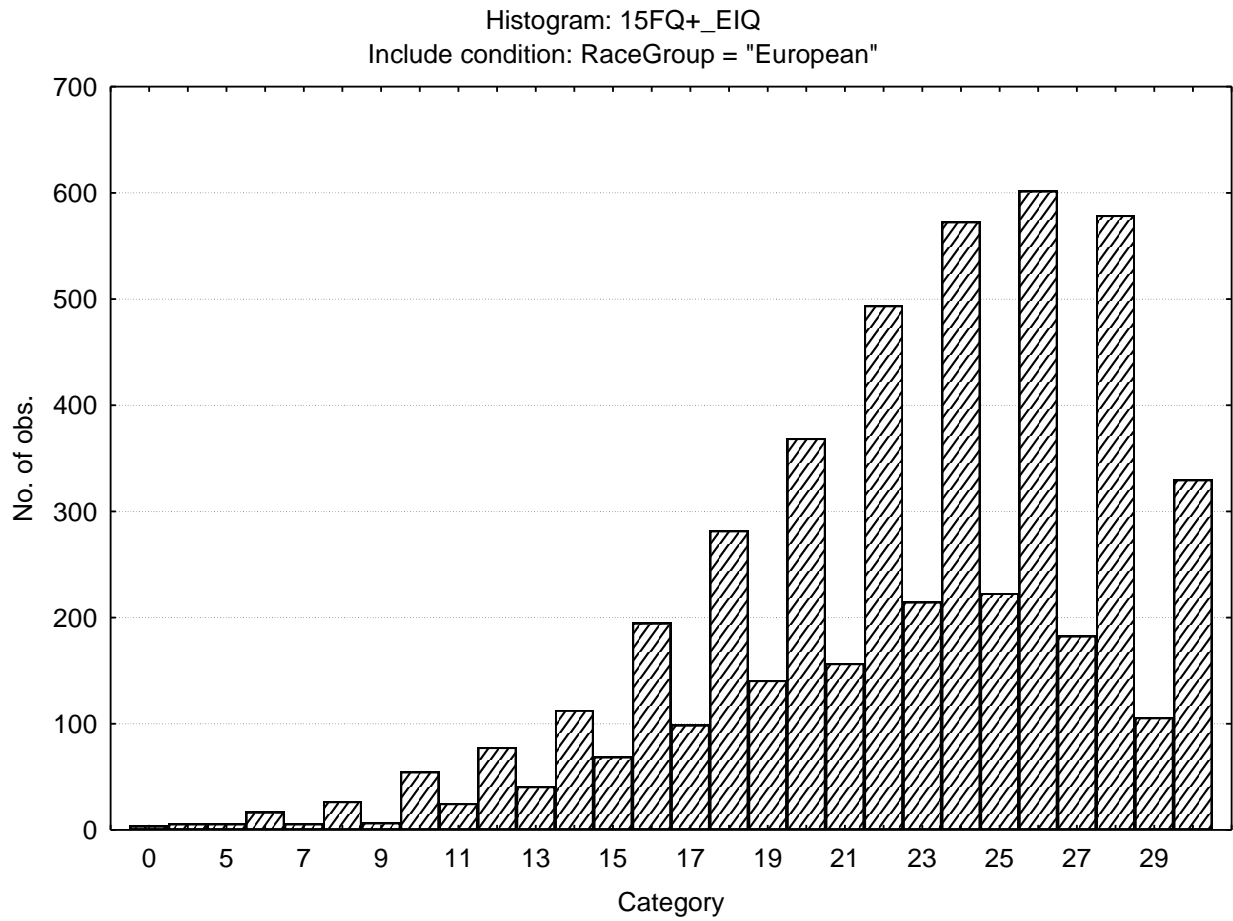
Central Tendency



Infrequency



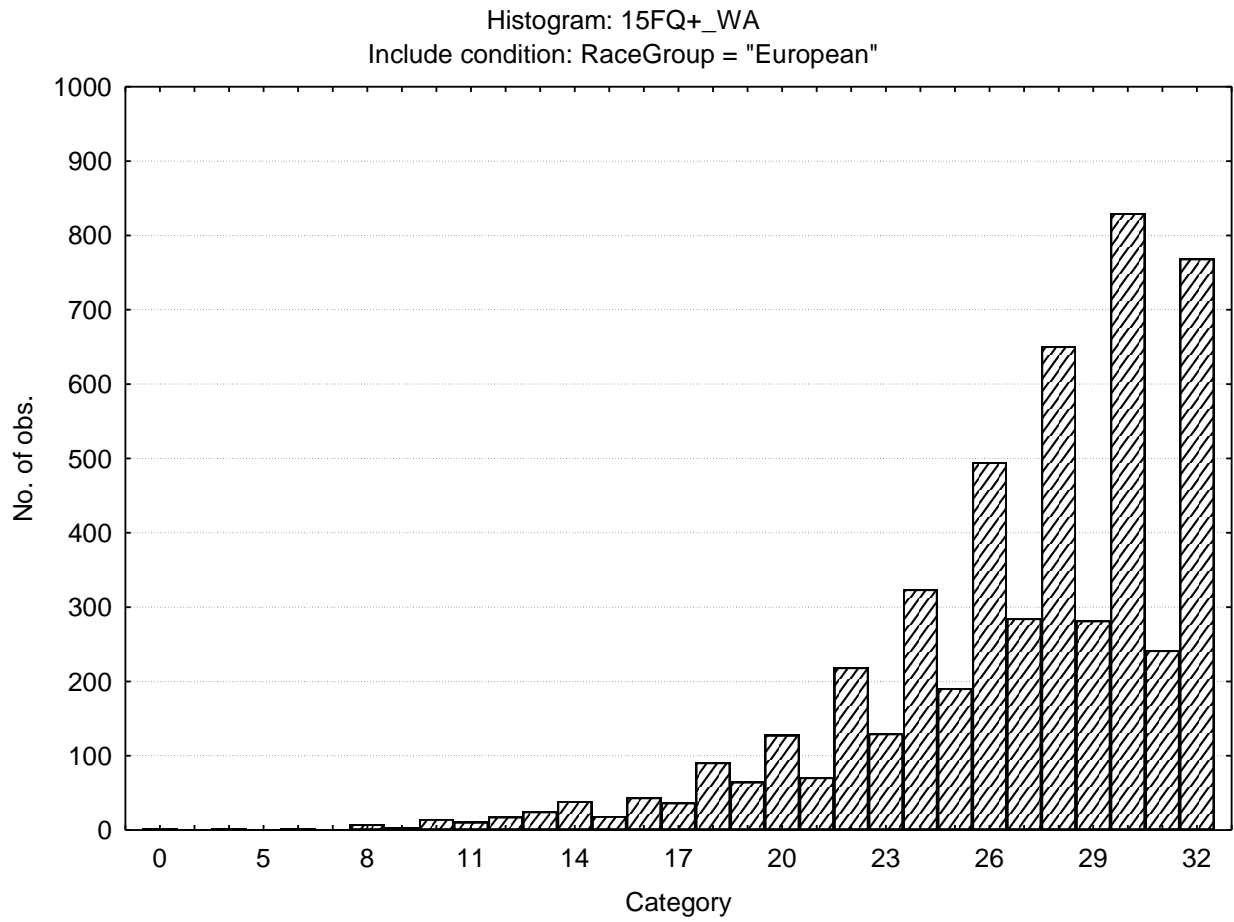
Emotional Intelligence



N16-23

Updated 13 July 2010

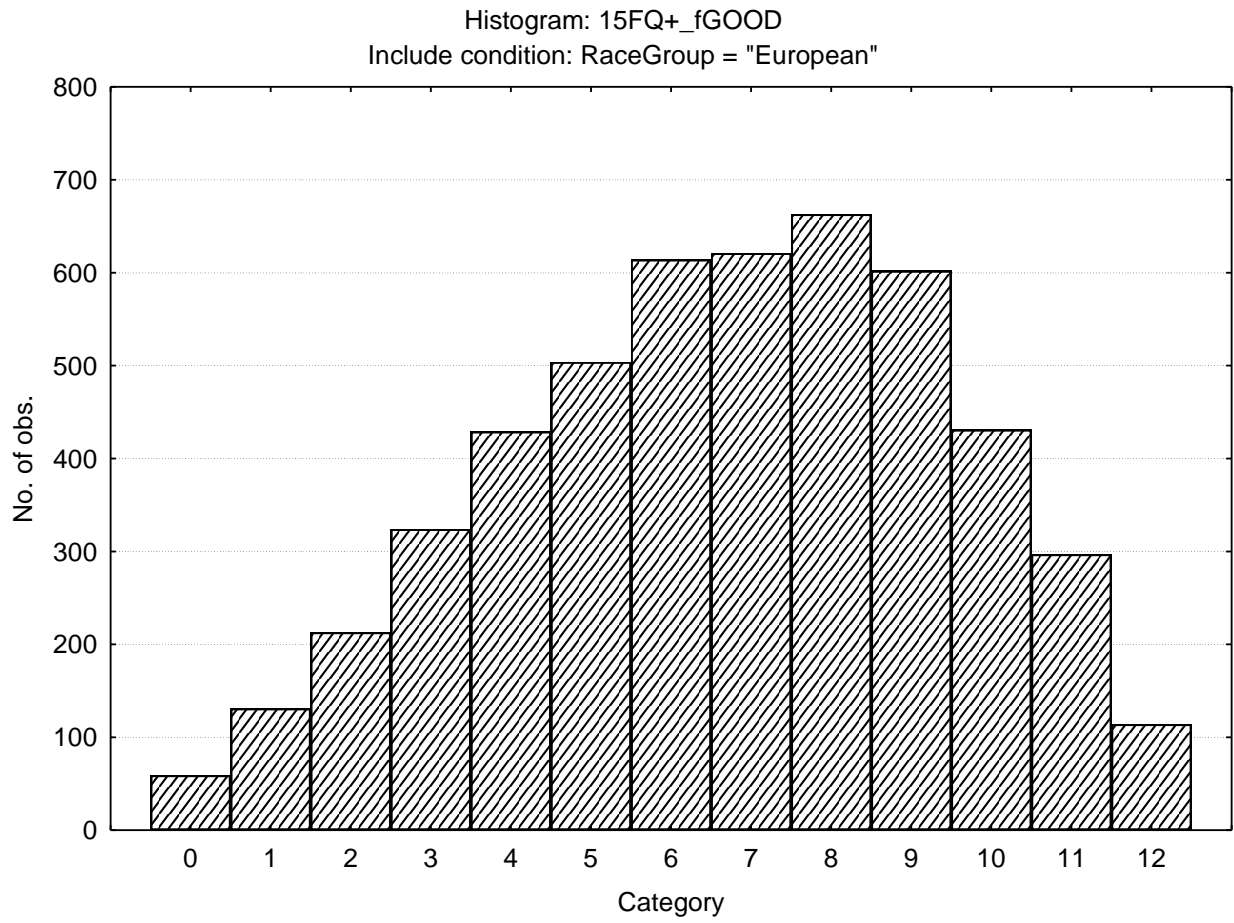
Work Attitude



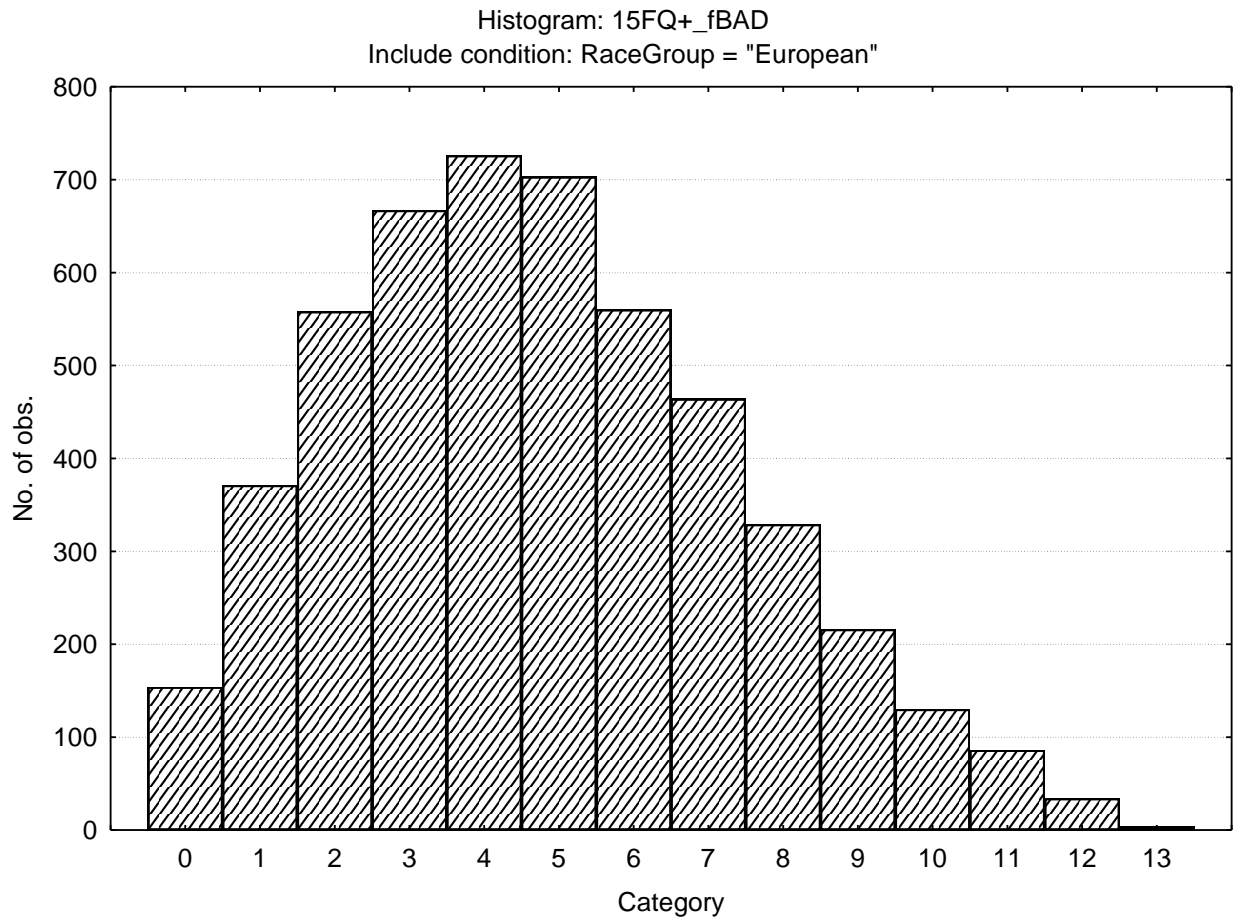
N16-24

Updated 13 July 2010

Faking Good



Faking Bad



Sten table

		<i>S10_1</i>	<i>S10_2</i>	<i>S10_3</i>	<i>S10_4</i>	<i>S10_5</i>	<i>S10_6</i>	<i>S10_7</i>	<i>S10_8</i>	<i>S10_9</i>	<i>S10_10</i>
15FQ+_fA	<i>Distant aloof - empathic</i>	1-9	10-11	12-14	15-16	17-18	19-20	21-22	23-24		
15FQ+_B	<i>Intellectance</i>	0-11	12-13	14-15	16-17	18-19	20-21	22-24			
15FQ+_fC	<i>Affected by feelings - emotionally stable</i>	0-6	7-9	10-11	12-14	15-17	18-19	20-22	23-24		
15FQ+_fE	<i>Accommodating - Dominant</i>	0-6	7-9	10-11	12-14	15-16	17-19	20-21	22-23	24-24	
15FQ+_fF	<i>Sober serious - Enthusiastic</i>	0-3	4-5	6-8	9-11	12-14	15-17	18-20	21-23	24-24	
15FQ+_fG	<i>Expedient - Conscientious</i>	0-8	9-11	12-13	14-16	17-18	19-21	22-23	24-24		
15FQ+_fH	<i>Retiring - Socially bold</i>	0-1	2-4	5-7	8-11	12-14	15-17	18-20	21-24		
15FQ+_fI	<i>Tough Minded - Tender minded</i>	0-3	4-6	7-8	9-11	12-14	15-16	17-19	20-22	23-24	
15FQ+_fL	<i>Trusting - Suspicious</i>	0--1	0-0	1-3	4-5	6-8	9-10	11-13	14-16	17-18	19-24
15FQ+_fM	<i>Concrete - Abstract</i>	0-1	2-3	4-5	6-8	9-10	11-12	13-14	15-17	18-19	20-24
15FQ+_fN	<i>Direct - Restrained</i>	0-8	9-10	11-13	14-15	16-18	19-20	21-23	24-24		
15FQ+_fO	<i>Self-assured - Apprehensive</i>	0-0	1-3	4-6	7-9	10-12	13-15	16-18	19-21	22-24	

N16-27

Updated 13 July 2010

		<i>S10_1</i>	<i>S10_2</i>	<i>S10_3</i>	<i>S10_4</i>	<i>S10_5</i>	<i>S10_6</i>	<i>S10_7</i>	<i>S10_8</i>	<i>S10_9</i>	<i>S10_10</i>
15FQ+_fQ1	<i>Conventional - Radical</i>	0--1	0-0	1-3	4-6	7-8	9-11	12-13	14-16	17-19	20-24
15FQ+_fQ2	<i>Group - orientated - Self-sufficient</i>	0--1	0-0	1-3	4-5	6-8	9-11	12-14	15-16	17-19	20-24
15FQ+_fQ3	<i>Informal- self disciplined</i>	1-12	13-14	15-16	17-18	19-20	21-21	22-23	24-24		
15FQ+_fQ4	<i>Composed - tense driven</i>	0--1	0-1	2-4	5-7	8-10	11-14	15-17	18-20	21-23	24-24
15FQ+_SD	<i>Social desirability</i>	0-2	3-4	5-6	7-8	9-9	10-11	12-13	14-15	16-16	
15FQ+_CT	<i>Central Tendency</i>	0--1	0-0	1-1	2-5	6-12	13-19	20-26	27-33	34-40	41-146
15FQ+_INF	<i>Infrequency</i>	0--1	0-0	1-1	2-2	3-3	4-4	5-5	6-6	7-7	8-15
15FQ+_EIQ	<i>Derived score: Emotional Intelligence</i>	0-12	13-15	16-17	18-20	21-22	23-25	26-27	28-30		
15FQ+_WA	<i>Derived score: Work attitude</i>	0-17	18-19	20-22	23-24	25-26	27-29	30-31	32-32		
15FQ+_fGOOD	<i>Faking good</i>	0-1	2-2	3-3	4-5	6-6	7-8	9-9	10-10	11-12	
15FQ+_fBAD	<i>Faking bad</i>	0--1	0-0	1-2	3-3	4-4	5-6	7-7	8-8	9-10	11-13