

Clerical Test Battery norm group: South Africans of African race, updated 2012

Composition of the sample

The sample consisted of South Africans who declared their race to be African, tested in the period up to February 2012 by Psytech SA and collaborators. Not all respondents completed the entire Clerical Test Battery, therefore the biographical composition of the sample is reported separately for the different subtests of the Clerical Test Battery.

Composition of the sample: Verbal Reasoning Test (VR2)

Category	Frequency table: Sex			
	Count	Cumulative Count	Percent	Cumulative Percent
F	1423	1423	57.12565	57.1257
M	1061	2484	42.59334	99.7190
U	7	2491	0.28101	100.0000
Missing	0	2491	0.00000	100.0000

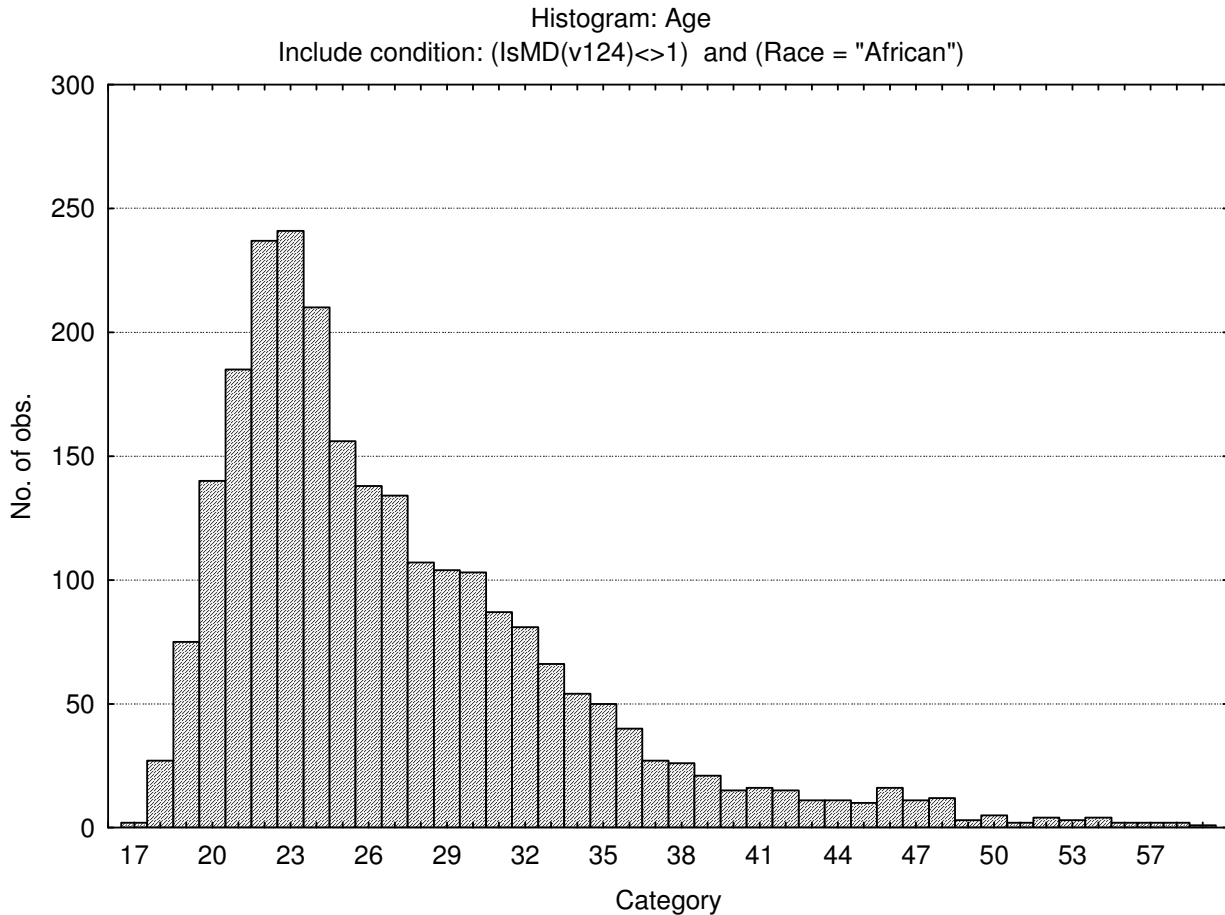
Category	Frequency table: Education			
	Count	Cumulative Count	Percent	Cumulative Percent
Grade 12	1344	1344	53.95424	53.9542
Under Gr 12	101	1445	4.05460	58.0088
Degree	182	1627	7.30630	65.3151
Certificate	94	1721	3.77358	69.0887
Post Graduate	27	1748	1.08390	70.1726
Technikon	378	2126	15.17463	85.3473
Diploma	211	2337	8.47049	93.8177
Missing	154	2491	6.18226	100.0000

Category	Frequency table: Language			
	Count	Cumulative Count	Percent	Cumulative Percent
isiZulu	772	772	30.99157	30.9916
Afrikaans	22	794	0.88318	31.8747
isiXhosa	352	1146	14.13087	46.0056
siSwati	87	1233	3.49257	49.4982
Sesotho	342	1575	13.72943	63.2276
Setswana	403	1978	16.17824	79.4059
Sepedi	155	2133	6.22240	85.6283
Xitsonga	80	2213	3.21156	88.8398
Tshivenda	51	2264	2.04737	90.8872
English	84	2348	3.37214	94.2593

Category	Frequency table: Language			
	Count	Cumulative Count	Percent	Cumulative Percent
isiNdebele	33	2381	1.32477	95.5841
Missing	110	2491	4.41590	100.0000

Category	Frequency table: Language Group			
	Count	Cumulative Count	Percent	Cumulative Percent
Indigenous	2275	2275	91.32878	91.3288
English	84	2359	3.37214	94.7009
Afrikaans	22	2381	0.88318	95.5841
Missing	110	2491	4.41590	100.0000

Variable	Descriptive Statistics: Age					
	Mean	Std.Dev	Minimum	Maximum	N	No.cases Missing
Age	27.09406	6.737598	17.00000	61.00000	2456	35



Composition of the sample: Numerical Ability Test

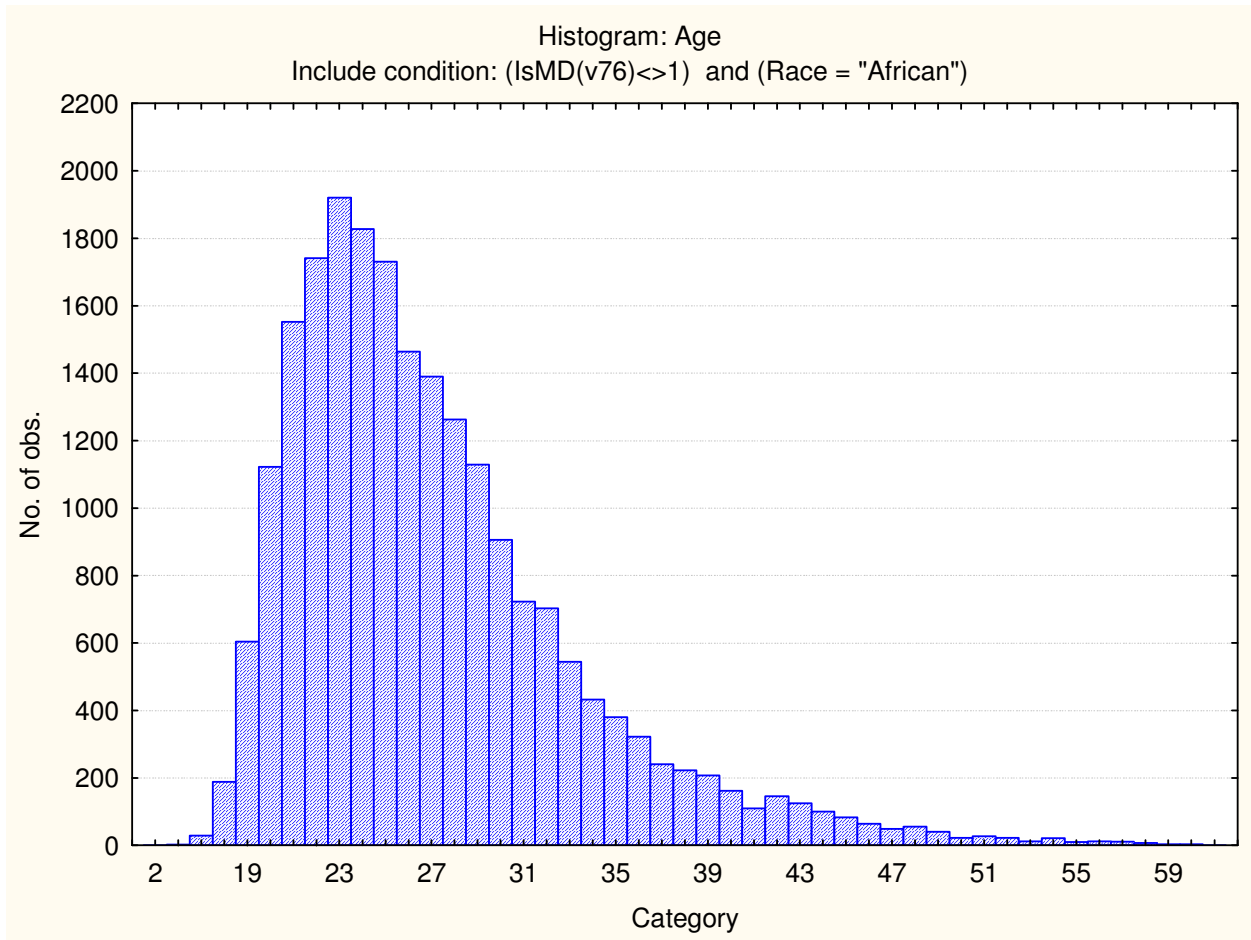
Category	Frequency table: Sex			
	Count	Cumulative Count	Percent	Cumulative Percent
F	14233	14233	65.21719	65.2172
M	7563	21796	34.65451	99.8717
U	28	21824	0.12830	100.0000
Missing	0	21824	0.00000	100.0000

Category	Frequency table: Education			
	Count	Cumulative Count	Percent	Cumulative Percent
Grade 12	12715	12715	58.26155	58.2615
Under Gr 12	1321	14036	6.05297	64.3145
Degree	1106	15142	5.06782	69.3823
Certificate	1722	16864	7.89040	77.2727
Post Graduate	313	17177	1.43420	78.7069
Technikon	1076	18253	4.93035	83.6373
Diploma	2674	20927	12.25257	95.8898
Missing	897	21824	4.11015	100.0000

Category	Frequency table: Language			
	Count	Cumulative Count	Percent	Cumulative Percent
isiZulu	6320	6320	28.95894	28.9589
Afrikaans	146	6466	0.66899	29.6279
isiXhosa	3425	9891	15.69373	45.3217
siSwati	535	10426	2.45143	47.7731
Sesotho	2617	13043	11.99139	59.7645
Setswana	3598	16641	16.48644	76.2509
Sepedi	2439	19080	11.17577	87.4267
Xitsonga	732	19812	3.35411	90.7808
Tshivenda	580	20392	2.65762	93.4384
English	320	20712	1.46628	94.9047
isiNdebele	303	21015	1.38838	96.2931
Missing	809	21824	3.70693	100.0000

Category	Frequency table: Language Group			
	Count	Cumulative Count	Percent	Cumulative Percent
Indigenous	20549	20549	94.15781	94.1578
English	320	20869	1.46628	95.6241
Afrikaans	146	21015	0.66899	96.2931
Missing	809	21824	3.70693	100.0000

Variable	Descriptive Statistics: Age					
	Mean	Std.Dev	Minimum	Maximum	N	No.cases Missing
Age	27.03023	6.238588	2.000000	62.00000	21733	91



Sample composition: Clerical Checking Test

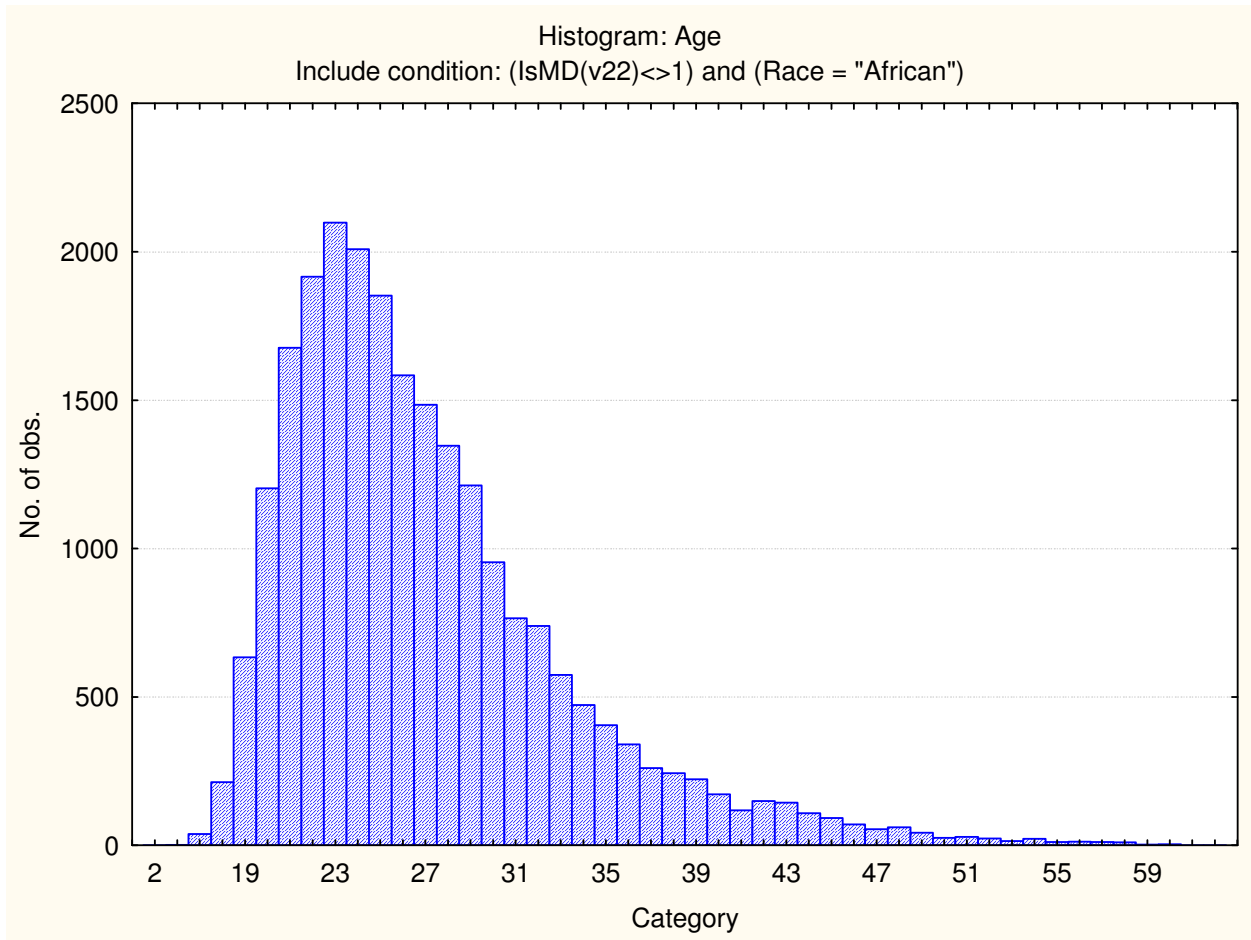
Category	Frequency table: Sex			
	Count	Cumulative Count	Percent	Cumulative Percent
F	15224	15224	64.69488	64.6949
M	8278	23502	35.17763	99.8725
U	30	23532	0.12749	100.0000
Missing	0	23532	0.00000	100.0000

Category	Frequency table: Education			
	Count	Cumulative Count	Percent	Cumulative Percent
Grade 12	13342	13342	56.69726	56.6973
Under Gr 12	1421	14763	6.03859	62.7358
Degree	1268	16031	5.38841	68.1243
Certificate	1787	17818	7.59391	75.7182
Post Graduate	351	18169	1.49159	77.2098
Technikon	1264	19433	5.37141	82.5812
Diploma	3020	22453	12.83359	95.4148
Missing	1079	23532	4.58525	100.0000

Category	Frequency table: Language			
	Count	Cumulative Count	Percent	Cumulative Percent
isiZulu	6946	6946	29.51725	29.5173
Afrikaans	163	7109	0.69267	30.2099
isiXhosa	3724	10833	15.82526	46.0352
siSwati	557	11390	2.36699	48.4022
Sesotho	2849	14239	12.10692	60.5091
Setswana	3859	18098	16.39895	76.9080
Sepedi	2526	20624	10.73432	87.6424
Xitsonga	770	21394	3.27214	90.9145
Tshivenda	616	22010	2.61771	93.5322
English	348	22358	1.47884	95.0110
isiNdebele	321	22679	1.36410	96.3751
Missing	853	23532	3.62485	100.0000

Category	Frequency table: Language Group			
	Count	Cumulative Count	Percent	Cumulative Percent
Indigenous	22168	22168	94.20364	94.2036
English	348	22516	1.47884	95.6825
Afrikaans	163	22679	0.69267	96.3751
Missing	853	23532	3.62485	100.0000

Variable	Descriptive Statistics: Age					
	Mean	Std.Dev	Minimum	Maximum	N	No.cases Missing
Age	27.01314	6.266124	2.000000	65.00000	23432	100



Sample composition: Spelling test

Category	Frequency table: Sex			
	Count	Cumulative Count	Percent	Cumulative Percent
F	385	385	56.28655	56.2865
M	299	684	43.71345	100.0000
Missing	0	684	0.00000	100.0000

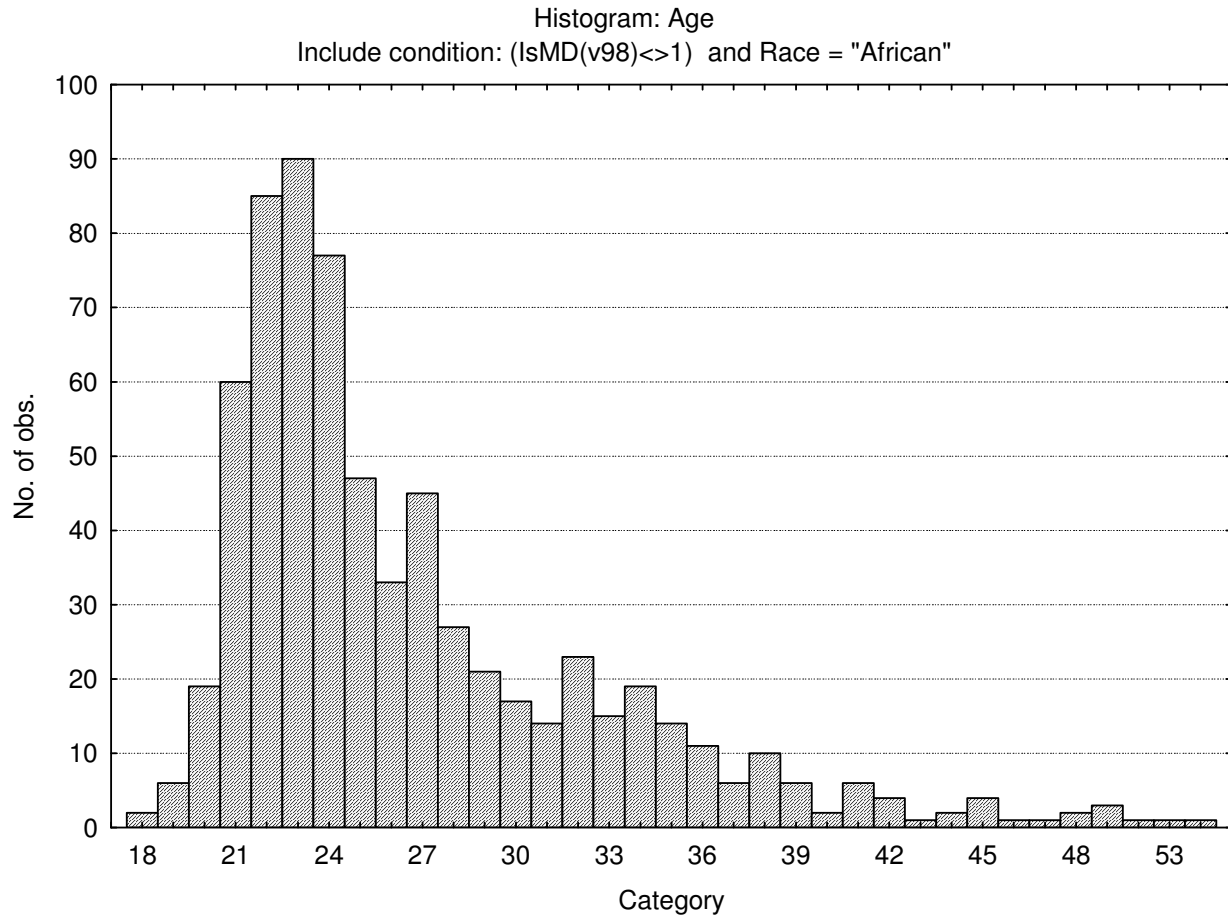
Category	Frequency table: Education			
	Count	Cumulative Count	Percent	Cumulative Percent
Grade 12	196	196	28.65497	28.6550
Under Gr 12	22	218	3.21637	31.8713
Degree	120	338	17.54386	49.4152
Certificate	9	347	1.31579	50.7310
Post Graduate	23	370	3.36257	54.0936
Technikon	71	441	10.38012	64.4737
Diploma	205	646	29.97076	94.4444
Missing	38	684	5.55556	100.0000

Category	Frequency table: Language			
	Count	Cumulative Count	Percent	Cumulative Percent
isiZulu	174	174	25.43860	25.4386
Afrikaans	9	183	1.31579	26.7544
isiXhosa	88	271	12.86550	39.6199
siSwati	7	278	1.02339	40.6433
Sesotho	117	395	17.10526	57.7485
Setswana	126	521	18.42105	76.1696
Sepedi	38	559	5.55556	81.7251
Xitsonga	26	585	3.80117	85.5263
Tshivenda	25	610	3.65497	89.1813
English	23	633	3.36257	92.5439
isiNdebele	8	641	1.16959	93.7135
Missing	43	684	6.28655	100.0000

Category	Frequency table: Language Group			
	Count	Cumulative Count	Percent	Cumulative Percent
Indigenous	609	609	89.03509	89.0351
English	23	632	3.36257	92.3977
Afrikaans	9	641	1.31579	93.7135
Missing	43	684	6.28655	100.0000

Category	Frequency table: Race			
	Count	Cumulative Count	Percent	Cumulative Percent
African	684	684	100.0000	100.0000
Missing	0	684	0.0000	100.0000

Variable	Descriptive Statistics					
	Mean	Std.Dev	Minimum	Maximum	N	No.cases Missing
Age	26.68491	6.080922	18.00000	56.00000	676	8

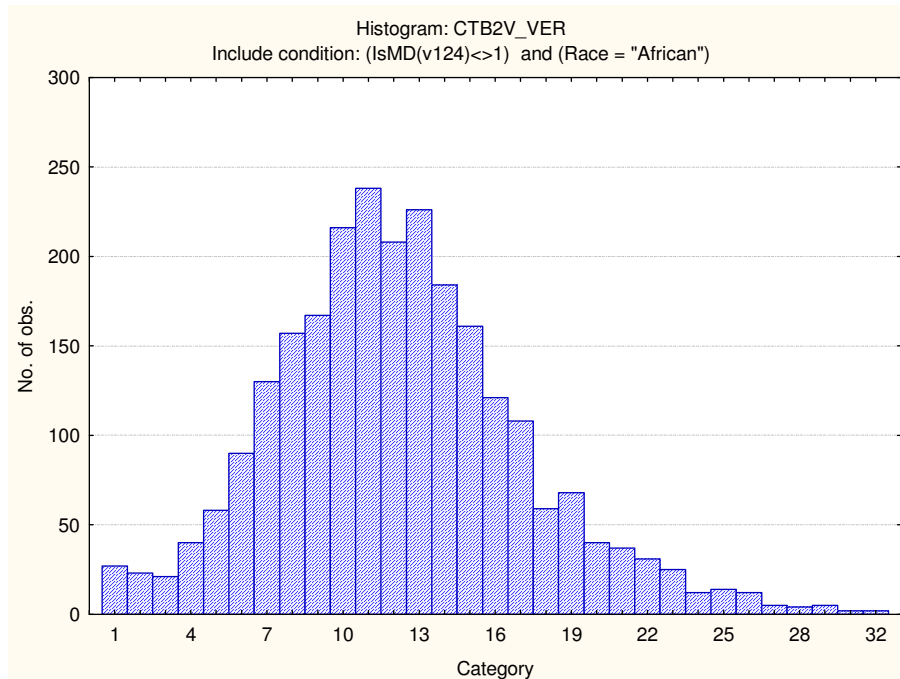


Descriptive statistics on Clerical Test Battery subtests

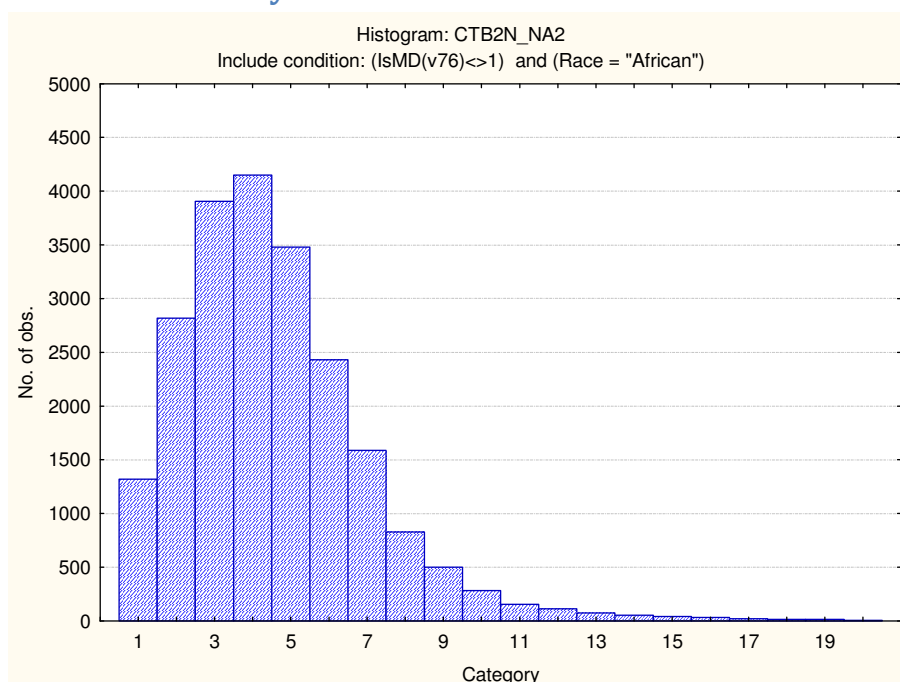
Scale	Mean	Standard deviation	Minimum score	Maximum score	N
Verbal Reasoning	12.21357	4.902109	1.000000	32.00000	2491
Numerical Ability	27.03023	6.238588	2.000000	62.00000	21733
Clerical Checking Numerical	9.26015	3.179128	1.000000	26.00000	23498
Clerical Checking Verbal	8.18020	3.262907	1.000000	26.00000	23468
Clerical Checking Total	17.40473	6.118541	1.000000	52.00000	23532
Spelling	14.50439	4.208509	2.000000	24.00000	684

Frequency distributions

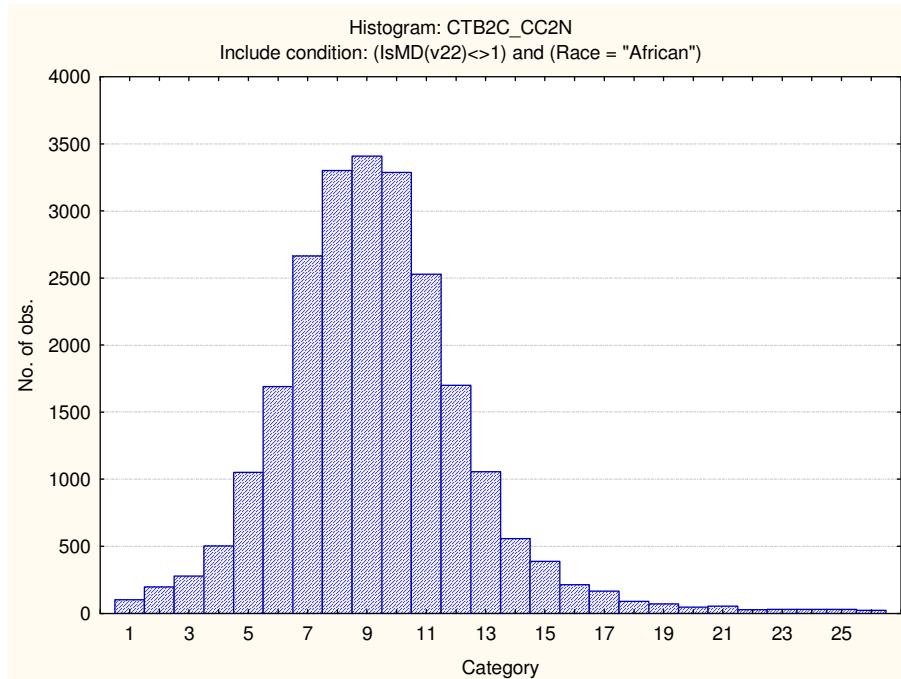
Verbal Reasoning



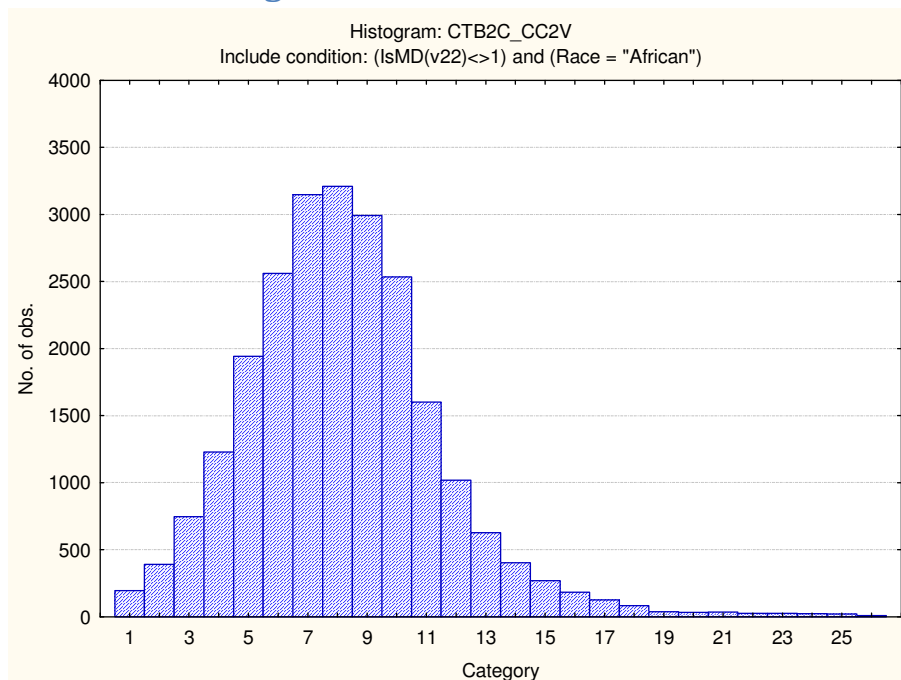
Numerical Ability



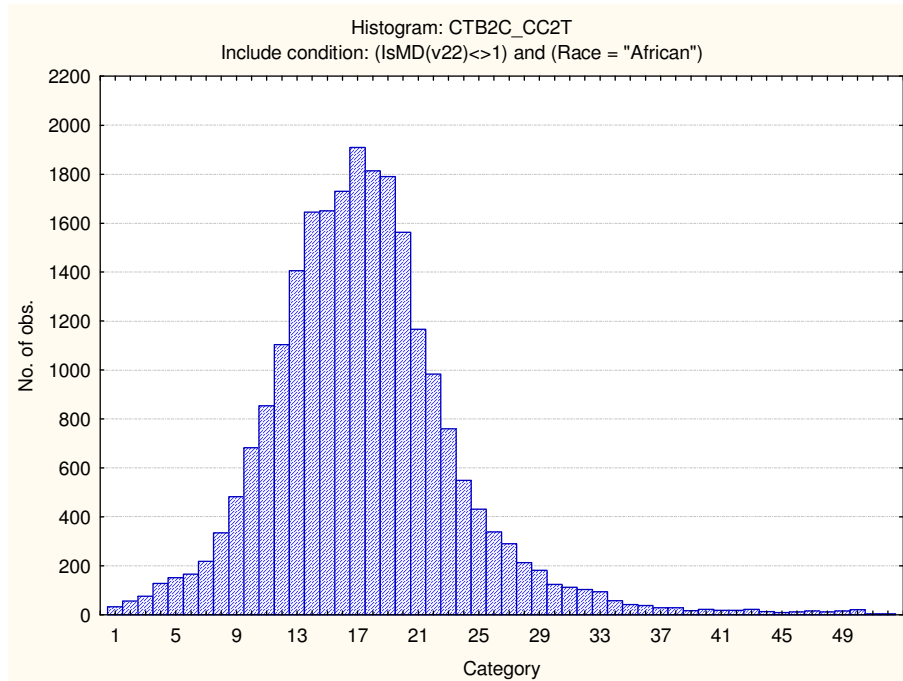
Clerical Checking Numerical



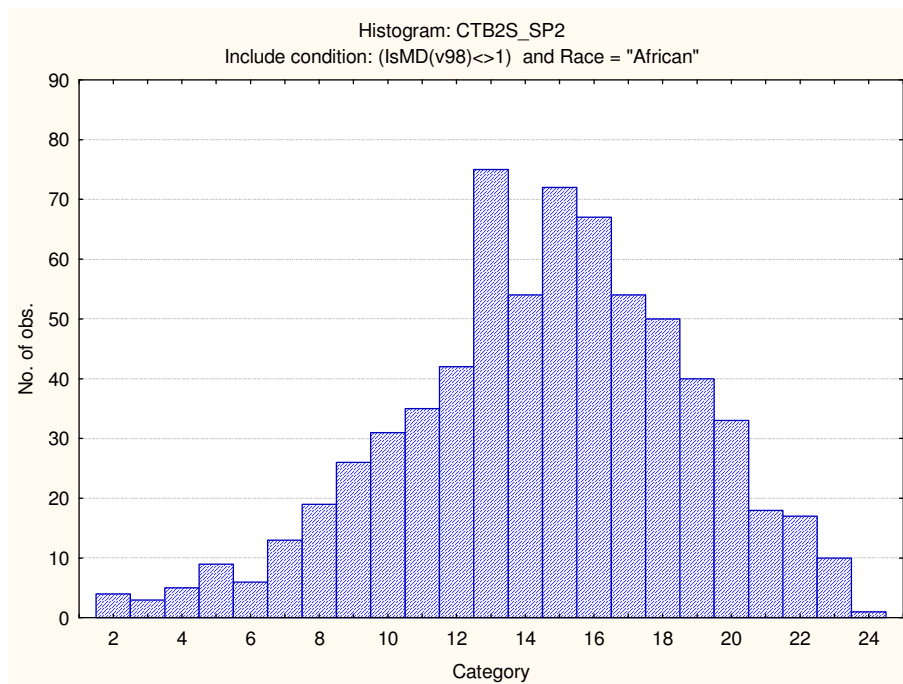
Clerical Checking Verbal



Clerical Checking Total Score



Spelling



Stanine table

	S9_1	S9_2	S9_3	S9_4	S9_5	S9_6	S9_7	S9_8	S9_9
Verbal Reasoning	1-3	4-6	7-8	9-10	11-13	14-15	16-18	19-20	21-32
Numerical Ability	2-16	17-19	20-22	23-25	26-28	29-31	32-34	35-37	38-62
Clerical Checking - Numerical	1-3	4-5	6-6	7-8	9-10	11-11	12-13	14-14	15-26
Clerical Checking - Verbal	1-2	3-4	5-5	6-7	8-8	9-10	11-12	13-13	14-26
Clerical Checking - Total	1-6	7-9	10-12	13-15	16-18	19-21	22-25	26-28	29-52
Spelling	2-7	8-9	10-11	12-13	14-15	16-17	18-19	20-21	22-24