

GRT2 norm table: South African General Population, updated 2010

Sample composition

The sample consisted of respondents who had completed any of the subtests of the General Reasoning Test battery in the period up to February 2010. Since not all the respondents completed all the subtests, biographical information is reported separately for the three tests.

General Verbal Reasoning test: biographical composition

Category	Frequency table: Sex			
	Count	Cumulative Count	Percent	Cumulative Percent
F	6310	6310	36.67112	36.6711
M	10838	17148	62.98599	99.6571
Missing	59	17207	0.34288	100.0000

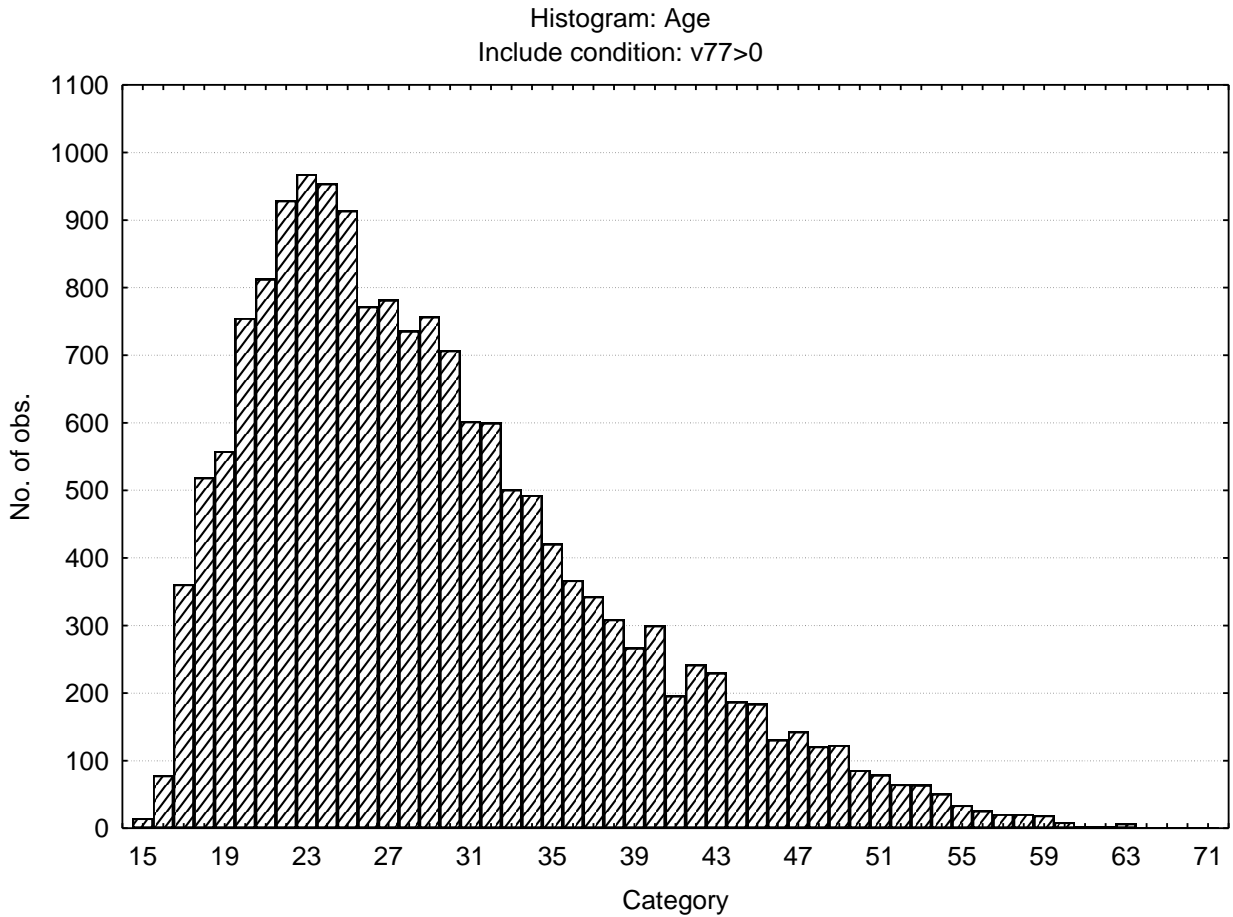
Category	Frequency table: Education			
	Count	Cumulative Count	Percent	Cumulative Percent
Technikon	1871	1871	10.87348	10.8735
Grade 12	4094	5965	23.79264	34.6661
University Diploma	340	6305	1.97594	36.6421
Degree	880	7185	5.11420	41.7563
Vocational Training	336	7521	1.95269	43.7090
Grade 10 or 11	902	8423	5.24205	48.9510
Grade 8	57	8480	0.33126	49.2823
Grade 9	64	8544	0.37194	49.6542
Grade 7	23	8567	0.13367	49.7879
Post Graduate	426	8993	2.47574	52.2636
Missing	8214	17207	47.73639	100.0000

Category	Frequency table: Language			
	Count	Cumulative Count	Percent	Cumulative Percent
isiZulu	1901	1901	11.04783	11.0478
English	2714	4615	15.77265	26.8205
Afrikaans	1880	6495	10.92579	37.7463
Setswana	558	7053	3.24287	40.9891
Sesotho	873	7926	5.07352	46.0626
Sepedi	229	8155	1.33085	47.3935
Xitsonga	121	8276	0.70320	48.0967
Tshivenda	66	8342	0.38356	48.4803
siSwati	58	8400	0.33707	48.8173
isiNdebele	32	8432	0.18597	49.0033
isiXhosa	1109	9541	6.44505	55.4484
Missing	7666	17207	44.55164	100.0000

Category	Frequency table: Language group			
	Count	Cumulative Count	Percent	Cumulative Percent
English	2714	2714	15.77265	15.7727
Afrikaans	1880	4594	10.92579	26.6984
Indigenous	5032	9626	29.24391	55.9423
Missing	7581	17207	44.05765	100.0000

Category	Frequency table: Race			
	Count	Cumulative Count	Percent	Cumulative Percent
African	5526	5526	32.11484	32.1148
European	2291	7817	13.31435	45.4292
Coloured	1248	9065	7.25286	52.6820
Asian	891	9956	5.17813	57.8602
Missing	7251	17207	42.13983	100.0000

Variable	Descriptive statistics: age					
	Mean	Std.Dev	Minimum	Maximum	N	No.cases Missing
Age	29.31855	8.718063	15.00000	71.00000	16870	337



General Numerical Reasoning Test: biographical composition

Frequency table: Sex				
Category	Count	Cumulative Count	Percent	Cumulative Percent
F	6015	6015	35.84625	35.8462
M	10705	16720	63.79619	99.6424
Missing	60	16780	0.35757	100.0000

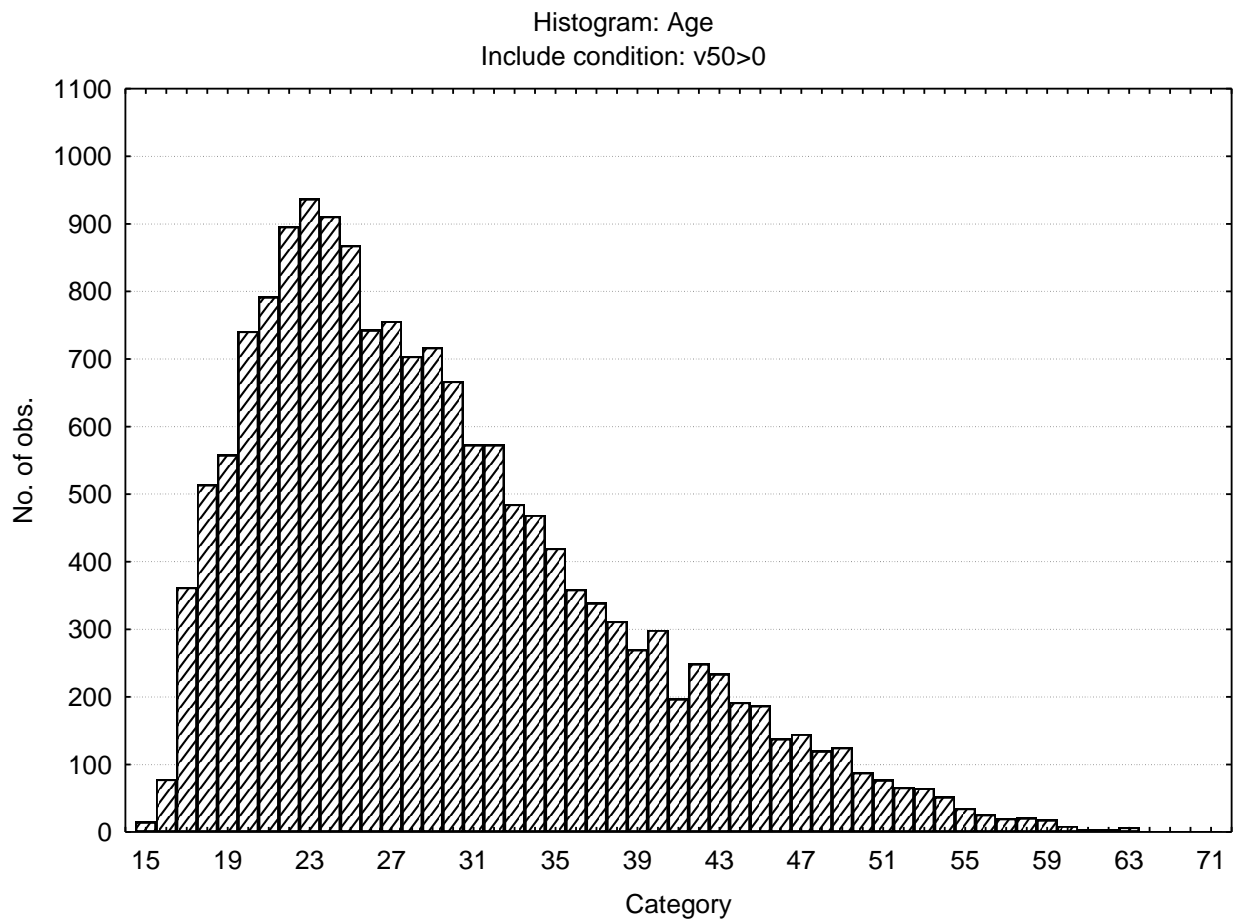
Frequency table: Education				
Category	Count	Cumulative Count	Percent	Cumulative Percent
Technikon	1863	1863	11.10250	11.1025
Grade 12	4133	5996	24.63051	35.7330
University Diploma	339	6335	2.02026	37.7533
Degree	873	7208	5.20262	42.9559
Vocational Training	331	7539	1.97259	44.9285
Grade 10 or 11	910	8449	5.42312	50.3516
Grade 8	60	8509	0.35757	50.7092
Grade 9	65	8574	0.38737	51.0965

Category	Frequency table: Education			
	Count	Cumulative Count	Percent	Cumulative Percent
Grade 7	25	8599	0.14899	51.2455
Post Graduate	415	9014	2.47318	53.7187
Missing	7766	16780	46.28129	100.0000

Category	Frequency table: Language			
	Count	Cumulative Count	Percent	Cumulative Percent
isiZulu	1902	1902	11.33492	11.3349
English	2719	4621	16.20381	27.5387
Afrikaans	1897	6518	11.30513	38.8439
Setswana	560	7078	3.33731	42.1812
Sesotho	874	7952	5.20858	47.3897
Sepedi	229	8181	1.36472	48.7545
Xitsonga	120	8301	0.71514	49.4696
Tshivenda	66	8367	0.39333	49.8629
siSwati	58	8425	0.34565	50.2086
isiNdebele	32	8457	0.19070	50.3993
isiXhosa	1108	9565	6.60310	57.0024
Missing	7215	16780	42.99762	100.0000

Category	Frequency table: Language group			
	Count	Cumulative Count	Percent	Cumulative Percent
English	2719	2719	16.20381	16.2038
Afrikaans	1897	4616	11.30513	27.5089
Indigenous	5034	9650	30.00000	57.5089
Missing	7130	16780	42.49106	100.0000

Category	Frequency table: Race			
	Count	Cumulative Count	Percent	Cumulative Percent
African	5523	5523	32.91418	32.9142
European	2308	7831	13.75447	46.6687
Coloured	1257	9088	7.49106	54.1597
Asian	888	9976	5.29201	59.4517
Missing	6804	16780	40.54827	100.0000



General Abstract Reasoning Test: biographical composition

Category	Frequency table: Sex			
	Count	Cumulative Count	Percent	Cumulative Percent
F	6256	6256	34.90682	34.9068
M	11604	17860	64.74724	99.6541
Missing	62	17922	0.34594	100.0000

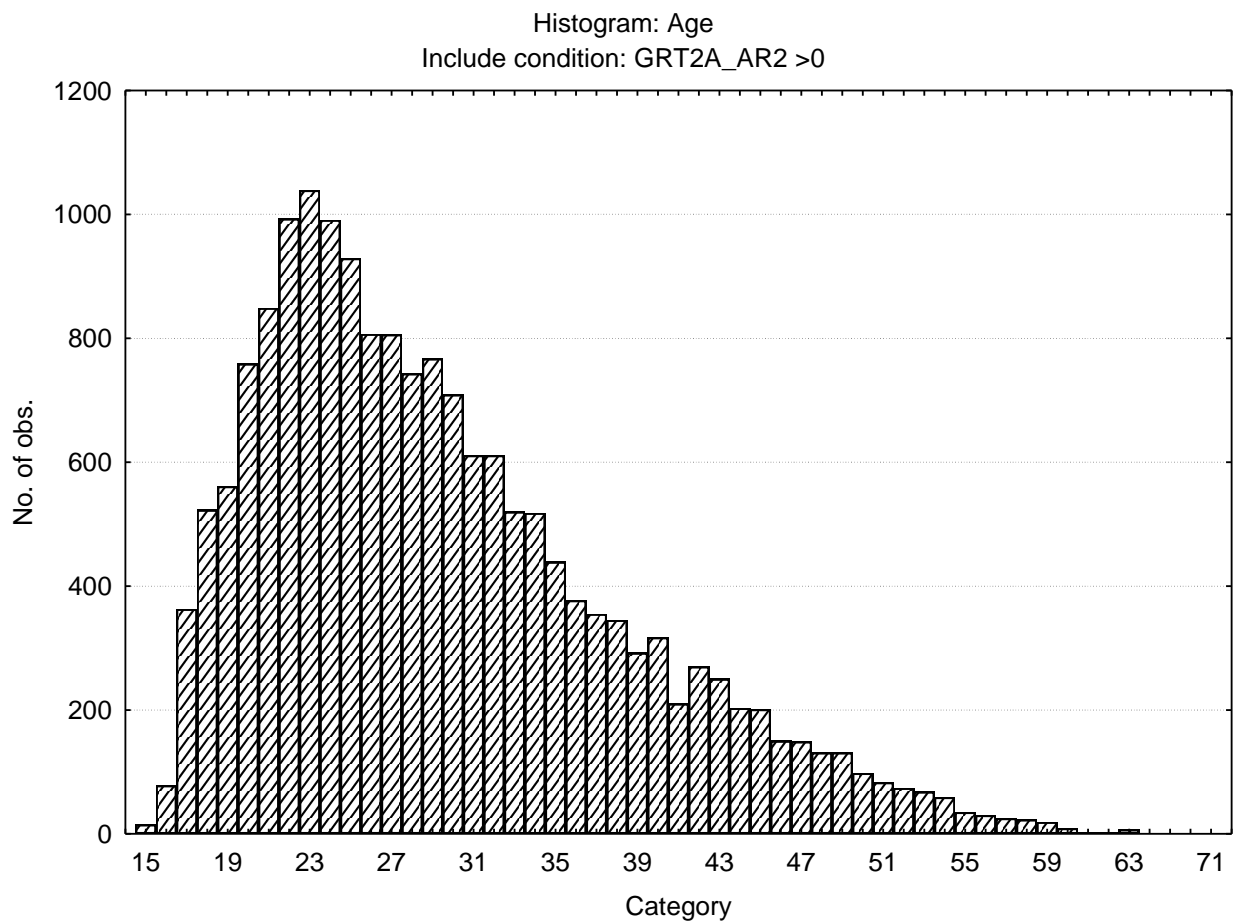
Category	Frequency table: Education			
	Count	Cumulative Count	Percent	Cumulative Percent
Technikon	2095	2095	11.68954	11.6895
Grade 12	4312	6407	24.05981	35.7494

Category	Frequency table: Education			
	Count	Cumulative Count	Percent	Cumulative Percent
University Diploma	384	6791	2.14262	37.8920
Degree	1043	7834	5.81966	43.7116
Vocational Training	351	8185	1.95849	45.6701
Grade 10 or 11	919	9104	5.12778	50.7979
Grade 8	59	9163	0.32920	51.1271
Grade 9	66	9229	0.36826	51.4954
Grade 7	22	9251	0.12275	51.6181
Post Graduate	592	9843	3.30320	54.9213
Missing	8079	17922	45.07867	100.0000

Category	Frequency table: Language			
	Count	Cumulative Count	Percent	Cumulative Percent
isiZulu	2047	2047	11.42172	11.4217
English	3234	5281	18.04486	29.4666
Afrikaans	1972	7253	11.00324	40.4698
Setswana	586	7839	3.26972	43.7395
Sesotho	916	8755	5.11104	48.8506
Sepedi	238	8993	1.32798	50.1786
Xitsonga	136	9129	0.75884	50.9374
Tshivenda	70	9199	0.39058	51.3280
siSwati	63	9262	0.35152	51.6795
isiNdebele	33	9295	0.18413	51.8636
isiXhosa	1176	10471	6.56177	58.4254
Missing	7451	17922	41.57460	100.0000

Category	Frequency table: Language Group			
	Count	Cumulative Count	Percent	Cumulative Percent
English	3234	3234	18.04486	18.0449
Afrikaans	1972	5206	11.00324	29.0481
Indigenous	5350	10556	29.85158	58.8997
Missing	7366	17922	41.10032	100.0000

Category	Frequency table: Race			
	Count	Cumulative Count	Percent	Cumulative Percent
African	5868	5868	32.74188	32.7419
European	2566	8434	14.31760	47.0595
Coloured	1302	9736	7.26481	54.3243
Asian	1166	10902	6.50597	60.8303
Missing	7020	17922	39.16974	100.0000



Descriptive statistics on General Reasoning Test Battery subtests:

Variable	Descriptive statistics					
	Mean	Std.Dev	Minimum	Maximum	N	No.cases Missing
General Verbal Reasoning	15.11263	6.131638	1.000000	34.00000	17207	0
General Verbal Reasoning items attempted	27.41442	6.739536	1.000000	35.00000	17207	0
General Numerical Reasoning	8.98518	5.209826	1.000000	25.00000	16667	113
General Numerical Reasoning items attempted	15.75089	5.402445	1.000000	25.00000	16780	0
General Abstract Reasoning	12.54832	5.406198	1.000000	25.00000	17922	0
General Abstract Reasoning items attempted	21.10350	4.317236	2.000000	25.00000	17922	0

Stanine table

	S9_1	S9_2	S9_3	S9_4	S9_5	S9_6	S9_7	S9_8	S9_9
General Verbal Reasoning	1-4	5-7	8-10	11-13	14-16	17-19	20-22	23-25	26-34
General Verbal Items Attempted	1-15	16-18	19-22	23-25	26-29	30-32	33-35		
General Numerical Reasoning	1-0	1-2	3-5	6-7	8-10	11-12	13-15	16-18	19-25
General Numerical Items Attempted	1-6	7-8	9-11	12-14	15-17	18-19	20-22	23-25	
General Abstract Reasoning	1-3	4-5	6-8	9-11	12-13	14-16	17-19	20-22	23-25
General Abstract Items Attempted	2-13	14-15	16-17	18-20	21-22	23-24	25-25		

