

Clerical Test Battery Norm Group: South Africans, race European, updated 2012

Composition of the sample

The sample consisted of South Africans who were tested on the Clerical Test Battery in the period leading up to February 2012, and who gave their race as European or White. Not all respondents completed the entire Clerical Test Battery, therefore the biographical composition of the sample is reported separately for the different subtests.

Composition of the sample: Verbal Reasoning Test

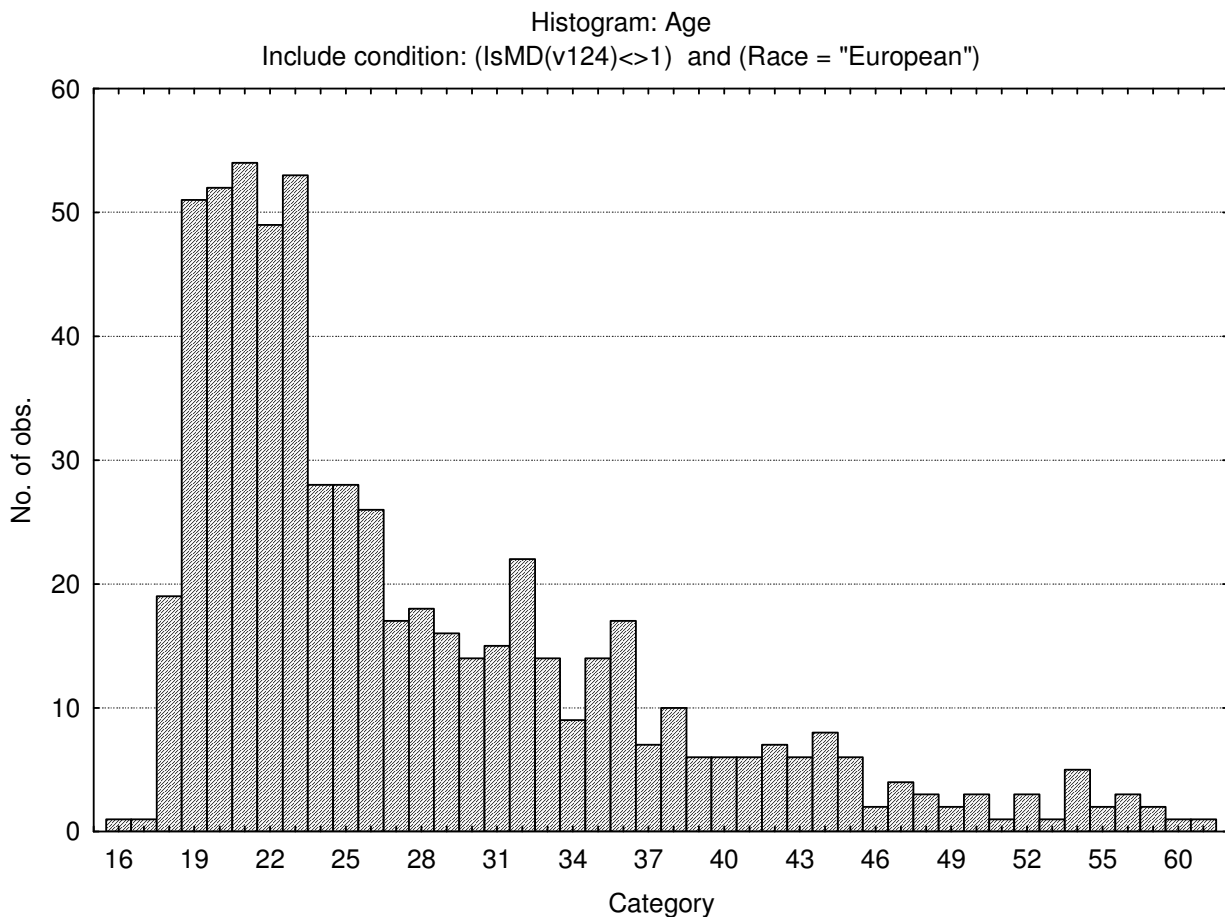
Category	Frequency table: Sex			
	Count	Cumulative Count	Percent	Cumulative Percent
F	353	353	55.76619	55.7662
M	276	629	43.60190	99.3681
U	4	633	0.63191	100.0000
Missing	0	633	0.00000	100.0000

Category	Frequency table: Education			
	Count	Cumulative Count	Percent	Cumulative Percent
Grade 12	419	419	66.19273	66.1927
Under Gr 12	44	463	6.95103	73.1438
Degree	43	506	6.79305	79.9368
Certificate	9	515	1.42180	81.3586
Post Graduate	11	526	1.73776	83.0964
Technikon	29	555	4.58136	87.6777
Diploma	27	582	4.26540	91.9431
Missing	51	633	8.05687	100.0000

Category	Frequency table: Language			
	Count	Cumulative Count	Percent	Cumulative Percent
Afrikaans	281	281	44.39179	44.3918
isiXhosa	2	283	0.31596	44.7077
Sesotho	1	284	0.15798	44.8657
Sepedi	1	285	0.15798	45.0237
English	337	622	53.23855	98.2622
Missing	11	633	1.73776	100.0000

Category	Frequency table: Language Group			
	Count	Cumulative Count	Percent	Cumulative Percent
Indigenous	4	4	0.63191	0.6319
English	337	341	53.23855	53.8705
Afrikaans	281	622	44.39179	98.2622
Missing	11	633	1.73776	100.0000

Variable	Descriptive Statistics: Age					
	Mean	Std.Dev	Minimum	Maximum	N	No.cases Missing
Age	27.74225	9.028212	16.00000	65.00000	613	20



Composition of the sample: Numerical Ability Test

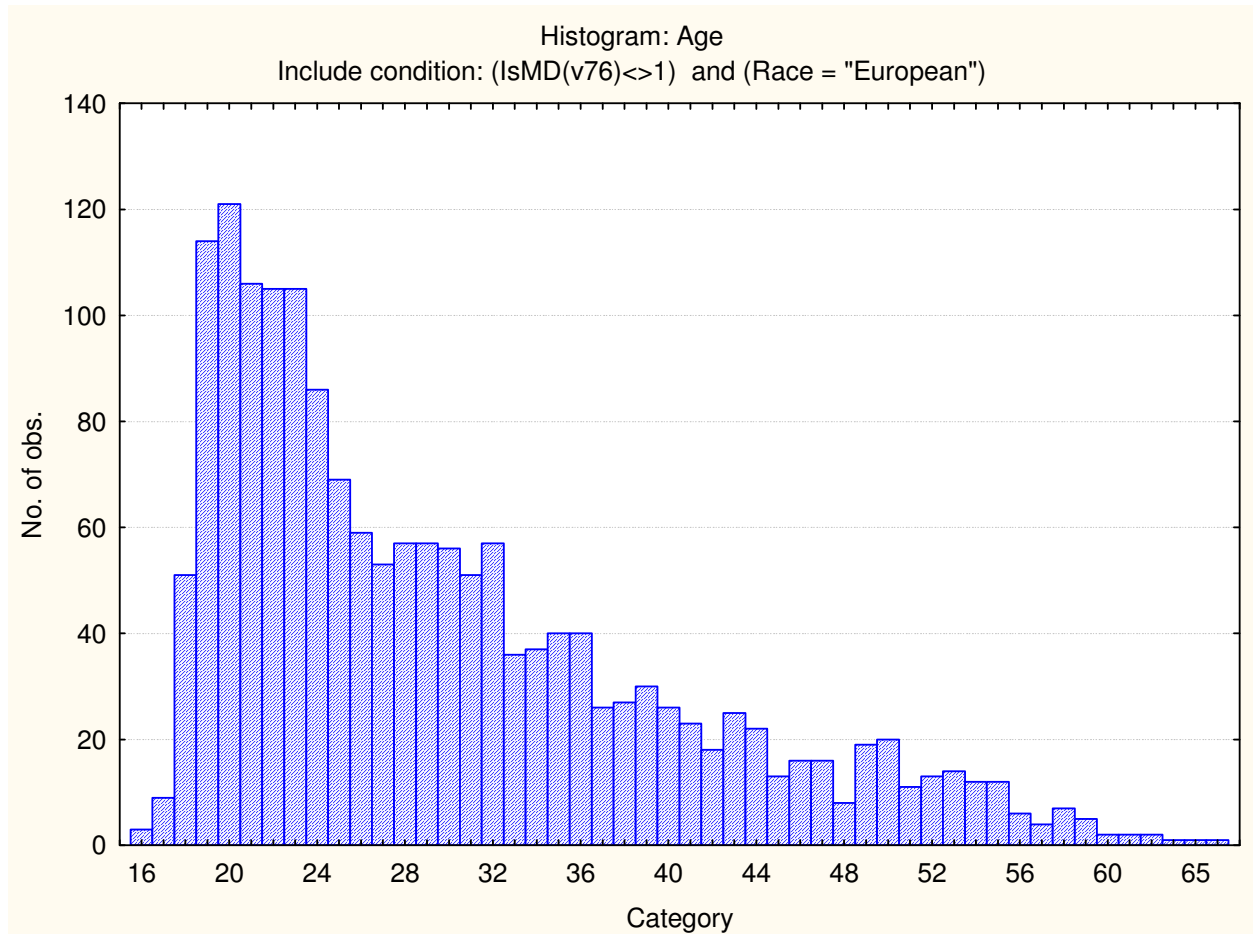
Category	Frequency table: Sex			
	Count	Cumulative Count	Percent	Cumulative Percent
F	1163	1163	67.73442	67.7344
M	548	1711	31.91613	99.6506
U	6	1717	0.34945	100.0000
Missing	0	1717	0.00000	100.0000

Category	Frequency table: Education			
	Count	Cumulative Count	Percent	Cumulative Percent
Grade 12	1091	1091	63.54106	63.5411
Under Gr 12	226	1317	13.16249	76.7036
Degree	79	1396	4.60105	81.3046
Certificate	56	1452	3.26150	84.5661
Post Graduate	25	1477	1.45603	86.0221
Technikon	41	1518	2.38789	88.4100
Diploma	111	1629	6.46476	94.8748
Missing	88	1717	5.12522	100.0000

Category	Frequency table: Language			
	Count	Cumulative Count	Percent	Cumulative Percent
Afrikaans	890	890	51.83460	51.8346
isiXhosa	5	895	0.29121	52.1258
Sesotho	1	896	0.05824	52.1840
Sepedi	9	905	0.52417	52.7082
English	742	1647	43.21491	95.9231
isiNdebele	1	1648	0.05824	95.9814
Missing	69	1717	4.01864	100.0000

Category	Frequency table: Language Group			
	Count	Cumulative Count	Percent	Cumulative Percent
Indigenous	16	16	0.93186	0.9319
English	742	758	43.21491	44.1468
Afrikaans	890	1648	51.83460	95.9814
Missing	69	1717	4.01864	100.0000

Variable	Descriptive Statistics : Age					N	No.cases Missing
	Mean	Std.Dev	Minimum	Maximum			
Age	29.79811	10.21207	16.00000	73.00000		1694	23



Composition of the sample: Clerical Checking Test

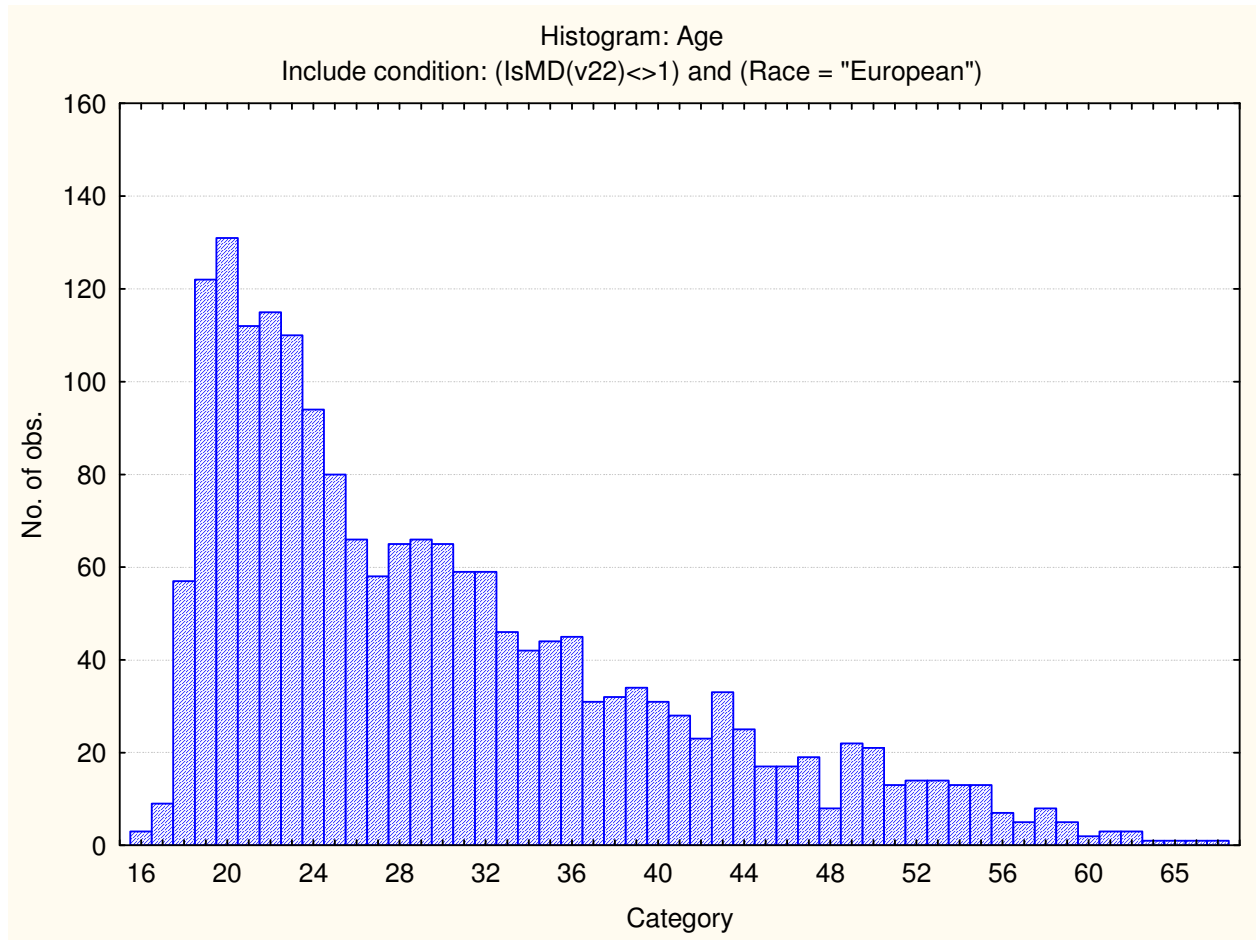
Category	Frequency table: Sex			
	Count	Cumulative Count	Percent	Cumulative Percent
F	1235	1235	64.38999	64.3900
M	676	1911	35.24505	99.6350
U	7	1918	0.36496	100.0000
Missing	0	1918	0.00000	100.0000

Category	Frequency table: Education			
	Count	Cumulative Count	Percent	Cumulative Percent
Grade 12	1182	1182	61.62669	61.6267
Under Gr 12	239	1421	12.46090	74.0876
Degree	91	1512	4.74453	78.8321
Certificate	57	1569	2.97185	81.8040
Post Graduate	35	1604	1.82482	83.6288
Technikon	72	1676	3.75391	87.3827
Diploma	123	1799	6.41293	93.7956
Missing	119	1918	6.20438	100.0000

Category	Frequency table: Language			
	Count	Cumulative Count	Percent	Cumulative Percent
Afrikaans	1022	1022	53.28467	53.2847
isiXhosa	7	1029	0.36496	53.6496
Sesotho	1	1030	0.05214	53.7018
Sepedi	9	1039	0.46924	54.1710
English	806	1845	42.02294	96.1940
isiNdebele	1	1846	0.05214	96.2461
Missing	72	1918	3.75391	100.0000

Category	Frequency table: Language Group			
	Count	Cumulative Count	Percent	Cumulative Percent
Indigenous	18	18	0.93848	0.9385
English	806	824	42.02294	42.9614
Afrikaans	1022	1846	53.28467	96.2461
Missing	72	1918	3.75391	100.0000

Variable	Descriptive Statistics : Age					
	Mean	Std.Dev	Minimum	Maximum	N	No.cases Missing
Age	30.04807	10.24016	16.00000	73.00000	1893	25



Composition of the sample: Spelling test

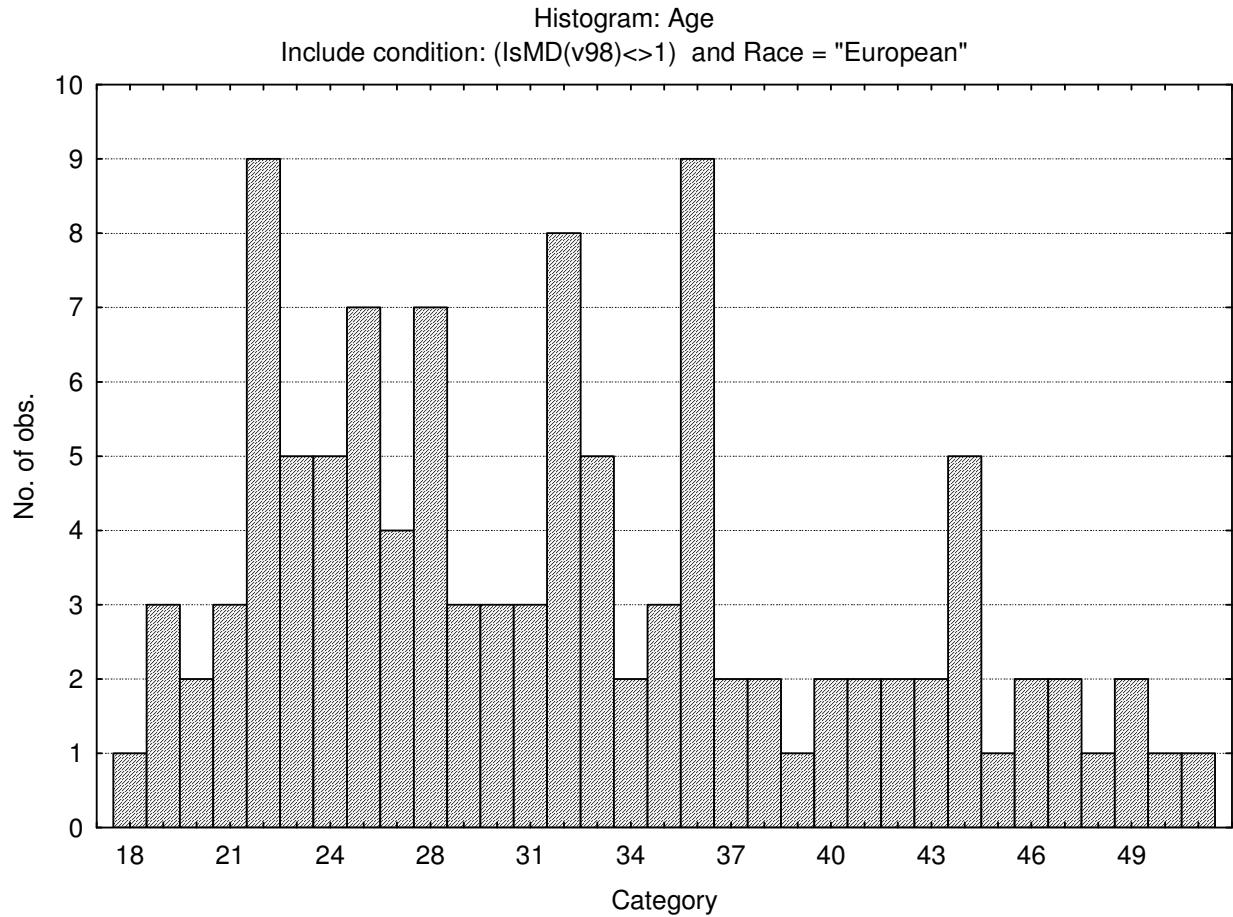
Category	Frequency table: Sex			
	Count	Cumulative Count	Percent	Cumulative Percent
F	70	70	60.34483	60.3448
M	44	114	37.93103	98.2759
U	2	116	1.72414	100.0000
Missing	0	116	0.00000	100.0000

Category	Frequency table: Education			
	Count	Cumulative Count	Percent	Cumulative Percent
Grade 12	70	70	60.34483	60.3448
Under Gr 12	11	81	9.48276	69.8276
Degree	7	88	6.03448	75.8621
Certificate	4	92	3.44828	79.3103
Post Graduate	1	93	0.86207	80.1724
Technikon	5	98	4.31034	84.4828
Diploma	12	110	10.34483	94.8276
Missing	6	116	5.17241	100.0000

Category	Frequency table: Language			
	Count	Cumulative Count	Percent	Cumulative Percent
Afrikaans	61	61	52.58621	52.5862
Sesotho	1	62	0.86207	53.4483
English	50	112	43.10345	96.5517
Missing	4	116	3.44828	100.0000

Category	Frequency table: Language Group			
	Count	Cumulative Count	Percent	Cumulative Percent
Indigenous	1	1	0.86207	0.8621
English	50	51	43.10345	43.9655
Afrikaans	61	112	52.58621	96.5517
Missing	4	116	3.44828	100.0000

Variable	Descriptive Statistics: Age					
	Mean	Std.Dev	Minimum	Maximum	N	No.cases Missing
Age	31.85455	8.687053	18.00000	58.00000	110	6

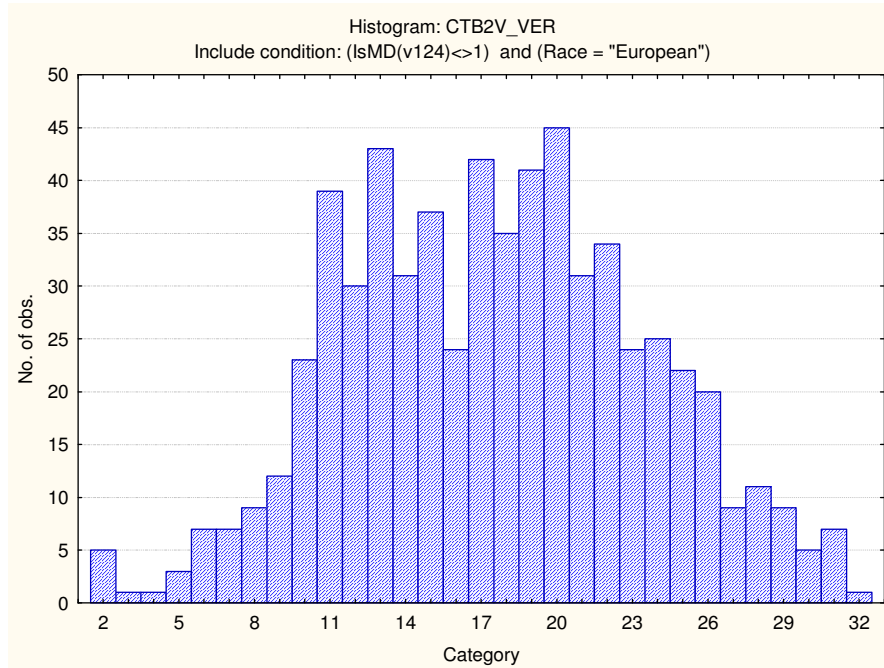


Descriptive statistics on Clerical Test Battery subtests

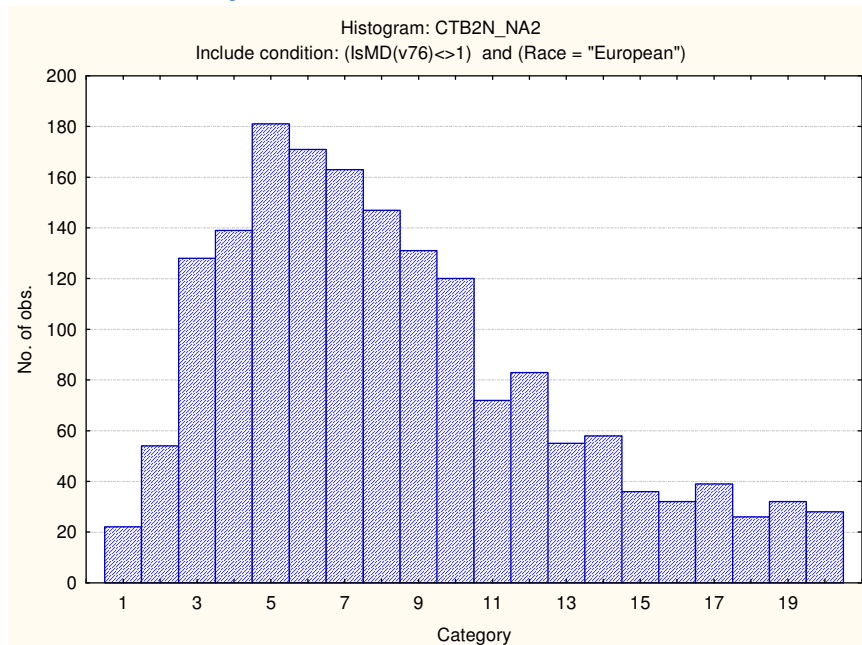
Scale	Mean	Standard deviation	Minimum score	Maximum score	N
Verbal Reasoning	17.54976	5.930863	2.000000	32.00000	633
Numerical Ability	8.365172	4.465488	1.000000	20.00000	1717
Clerical Checking Numerical	11.13347	4.014309	1.000000	26.00000	1918
Clerical Checking Verbal	10.33612	4.138058	1.000000	26.00000	1916
Clerical Checking Total	21.45881	7.946950	1.000000	52.00000	1918
Spelling	12.84483	5.139114	1.000000	24.00000	116

Frequency distributions

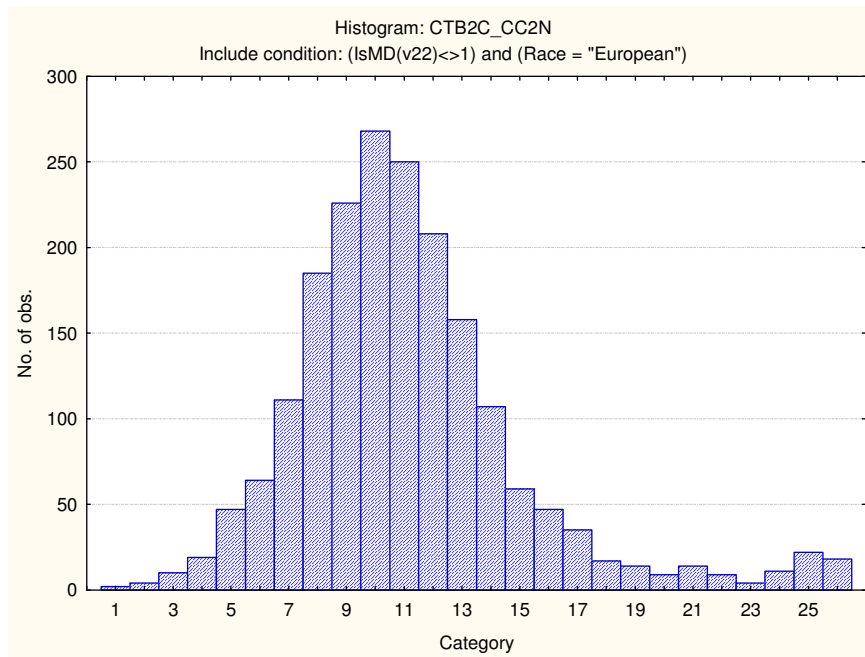
Verbal Reasoning Test



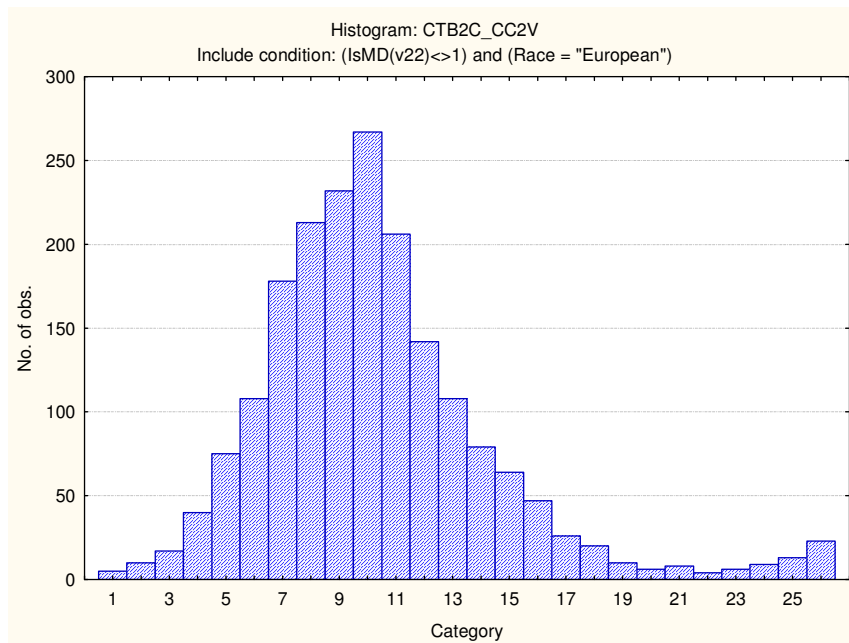
Numerical Ability test



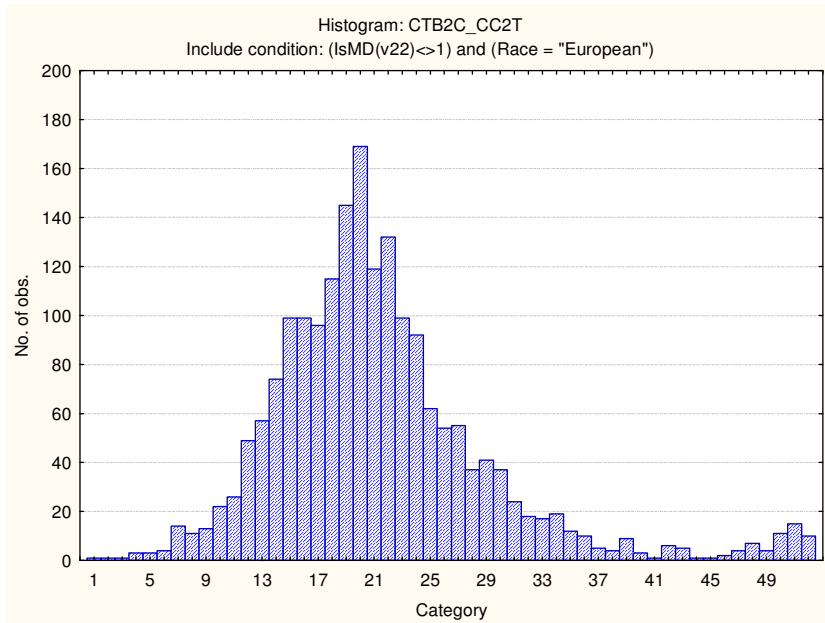
Clerical Checking: Numerical



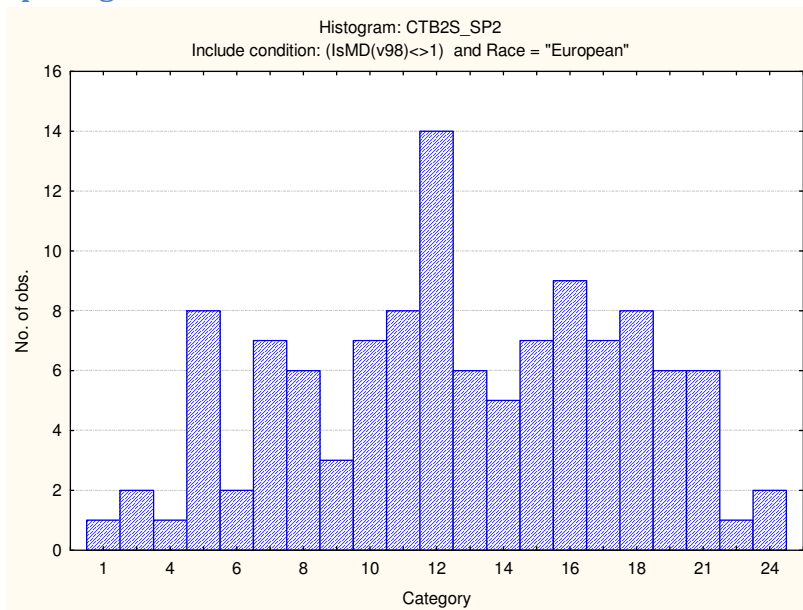
Clerical Checking: Verbal



Clerical Checking: Total score



Spelling test



Stanine table

	S9_1	S9_2	S9_3	S9_4	S9_5	S9_6	S9_7	S9_8	S9_9
Verbal Reasoning	2-7	8-10	11-13	14-16	17-19	20-21	22-24	25-27	28-32
Numerical Ability	1-0	1-2	3-5	6-7	8-9	10-11	12-13	14-16	17-20
Clerical Checking - Numerical	1-4	5-6	7-8	9-10	11-12	13-14	15-16	17-18	19-26
Clerical Checking - Verbal	1-3	4-5	6-7	8-9	10-11	12-13	14-15	16-17	18-26
Clerical Checking - Total	1-7	8-11	12-15	16-19	20-23	24-27	28-31	32-35	36-52
Spelling	1-3	4-6	7-8	9-11	12-14	15-16	17-19	20-21	22-24