

Norm group: South Africans, race Asian, updated 2010

Sample composition

The sample consisted of South Africans who gave their race as Asian, tested by Psytech SA and collaborators in the period up to January 2010.

Gender composition of the sample

Category	Frequency table: Sex			
	Count	Cumulative Count	Percent	Cumulative Percent
F	687	687	39.61938	39.6194
M	1040	1727	59.97693	99.5963
Missing	7	1734	0.40369	100.0000

Educational composition of the sample

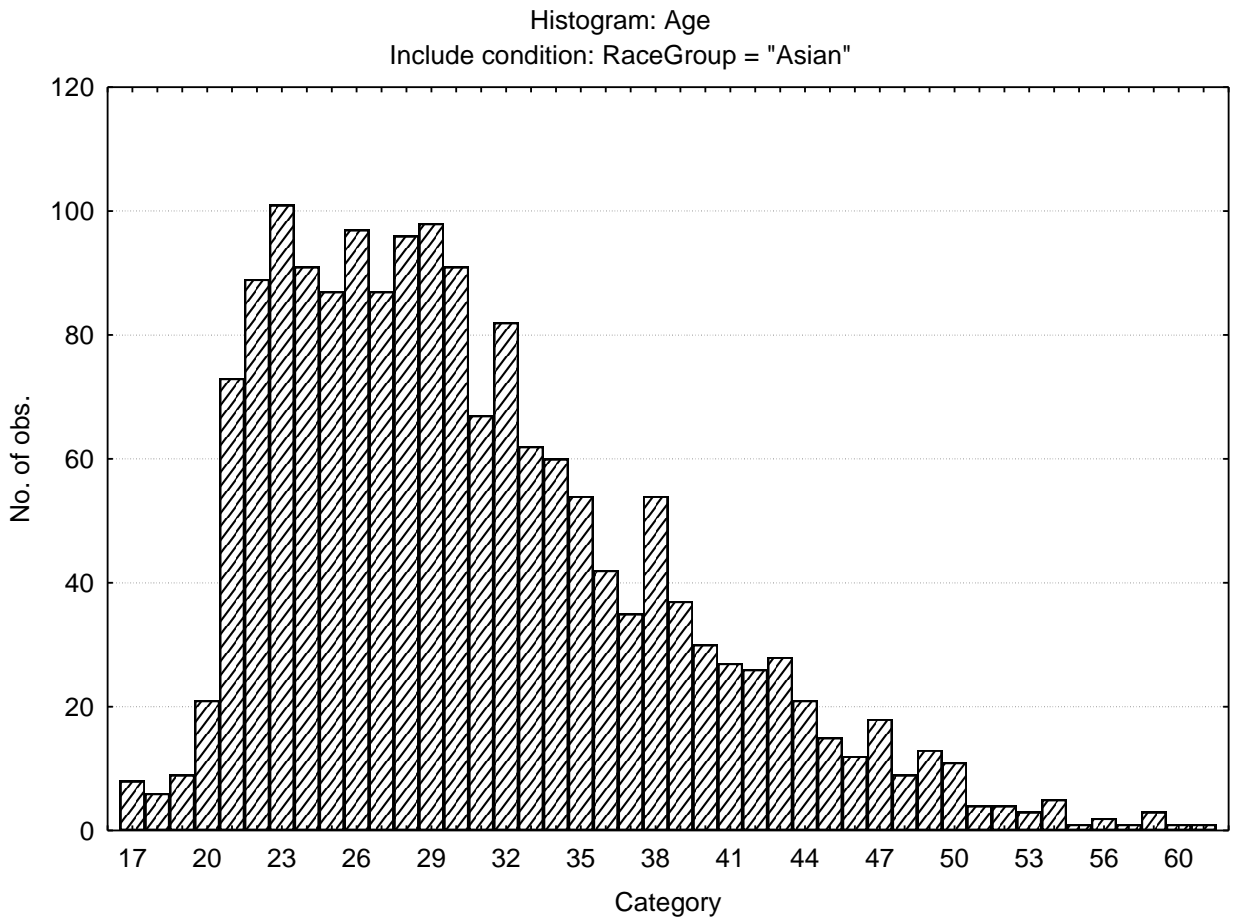
Category	Frequency table: Education			
	Count	Cumulative Count	Percent	Cumulative Percent
Grade 12	484	484	27.91234	27.9123
Degree	340	824	19.60784	47.5202
Post Graduate	321	1145	18.51211	66.0323
Technikon	163	1308	9.40023	75.4325
University diploma	133	1441	7.67013	83.1027
Grade 10 or 11	42	1483	2.42215	85.5248
Vocational Training	45	1528	2.59516	88.1200
Diploma	24	1552	1.38408	89.5040
Certificate	9	1561	0.51903	90.0231
Missing	173	1734	9.97693	100.0000

Language composition of the sample

Category	Frequency table: Language Group			
	Count	Cumulative Count	Percent	Cumulative Percent
Indigenous	13	13	0.74971	0.7497
Afrikaans	5	18	0.28835	1.0381
English	1587	1605	91.52249	92.5606
Missing	129	1734	7.43945	100.0000

Age composition of the sample

Variable	Descriptive Statistics					No.cases Missing
	Mean	Std.Dev	Minimum	Maximum	N	
Age	30.73543	7.707752	17.00000	61.00000	1682	52

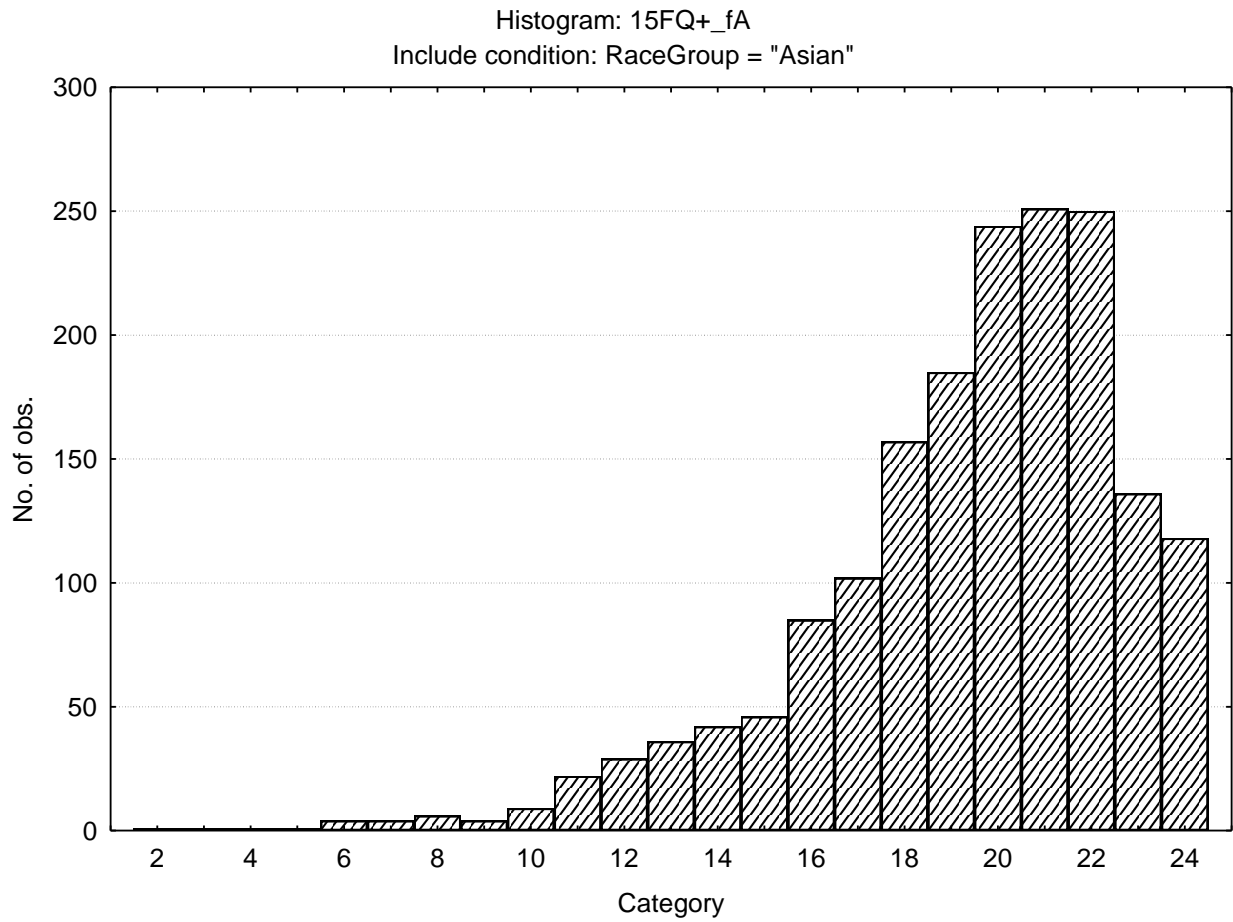


Descriptive statistics on 15FQ+ scales

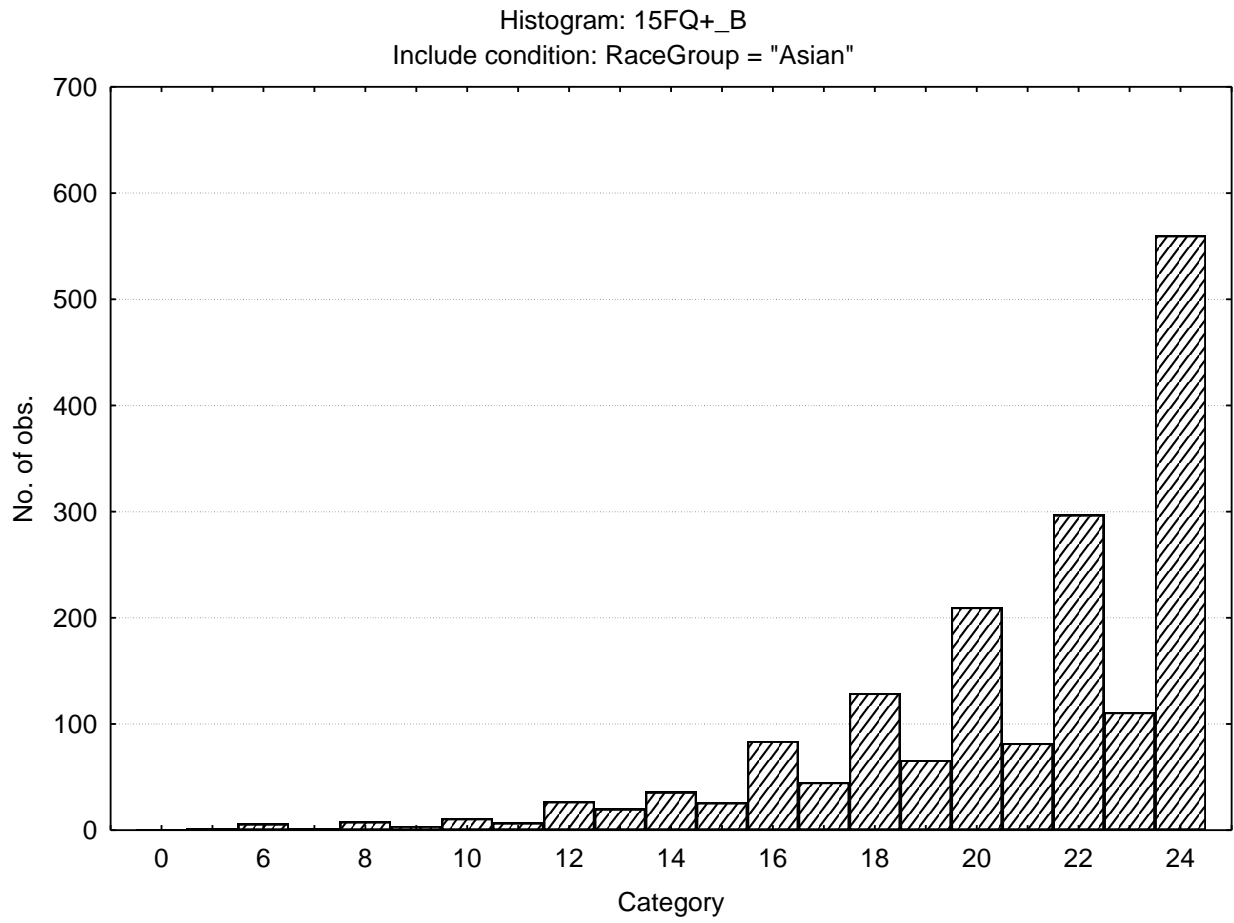
Variable		Descriptive Statistics					
		Mean	Std.Dev	Minimum	Maximum	N	No.cases Missing
15FQ+_fA	<i>Distant aloof - empathic</i>	19.38985	3.36940	2.00000	24.0000	1734	0
15FQ+_B	<i>Intellectance</i>	20.73645	3.64325	0.00000	24.0000	1734	0
15FQ+_fC	<i>Affected by feelings - emotionally stable</i>	17.76528	4.46034	0.00000	24.0000	1734	0
15FQ+_fE	<i>Accommodating - Dominant</i>	16.55190	4.45124	0.00000	24.0000	1734	0
15FQ+_fF	<i>Sober serious - Enthusiastic</i>	15.93483	5.21525	0.00000	24.0000	1734	0
15FQ+_fG	<i>Expedient - Conscientious</i>	20.09746	3.89123	2.00000	24.0000	1734	0
15FQ+_fH	<i>Retiring - Socially bold</i>	16.07728	5.87265	0.00000	24.0000	1734	0
15FQ+_fI	<i>Tough Minded - Tender minded</i>	14.43599	5.24871	0.00000	24.0000	1734	0
15FQ+_fL	<i>Trusting - Suspicious</i>	8.94983	5.05929	0.00000	24.0000	1734	0
15FQ+_fM	<i>Concrete - Abstract</i>	10.45559	3.87172	0.00000	24.0000	1734	0
15FQ+_fN	<i>Direct - Restrained</i>	19.59862	3.90353	0.00000	24.0000	1734	0
15FQ+_fO	<i>Self-assured - Apprehensive</i>	11.18339	5.57143	0.00000	24.0000	1734	0
15FQ+_fQ1	<i>Conventional - Radical</i>	9.19493	4.96567	0.00000	24.0000	1734	0
15FQ+_fQ2	<i>Group - orientated - Self-sufficient</i>	6.92734	4.43201	0.00000	24.0000	1734	0
15FQ+_fQ3	<i>Informal- self disciplined</i>	20.21742	3.10269	6.00000	24.0000	1734	0
15FQ+_fQ4	<i>Composed - tense driven</i>	7.58997	5.54088	0.00000	24.0000	1734	0
15FQ+_SD	<i>Social desirability</i>	12.14994	3.44916	0.00000	16.0000	1734	0
15FQ+_CT	<i>Central Tendency</i>	11.45271	13.19597	0.00000	125.0000	1734	0
15FQ+_INF	<i>Infrequency</i>	1.16436	1.45249	0.00000	13.0000	1734	0
15FQ+_EIQ	<i>Derived score: Emotional Intelligence</i>	24.94348	4.02534	6.00000	30.0000	1734	0
15FQ+_WA	<i>Derived score: Work attitude</i>	27.86736	3.83153	10.00000	32.0000	1734	0
15FQ+_fGOOD	<i>Faking good</i>	7.96251	2.59328	0.00000	12.0000	1734	0
15FQ+_fBAD	<i>Faking bad</i>	3.98385	2.31525	0.00000	13.0000	1734	0

Frequency distributions of 15FQ+ scale scores

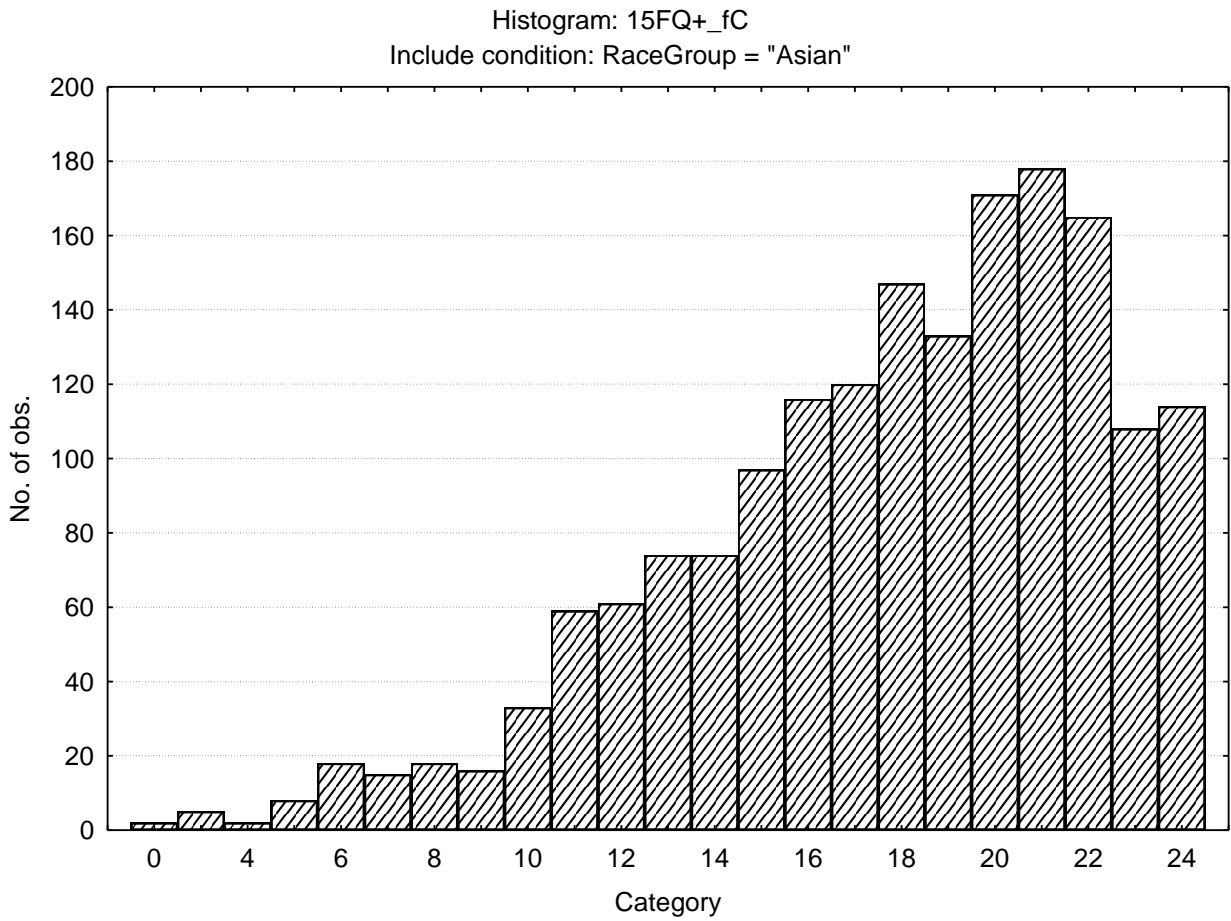
Distant aloof - Empathic



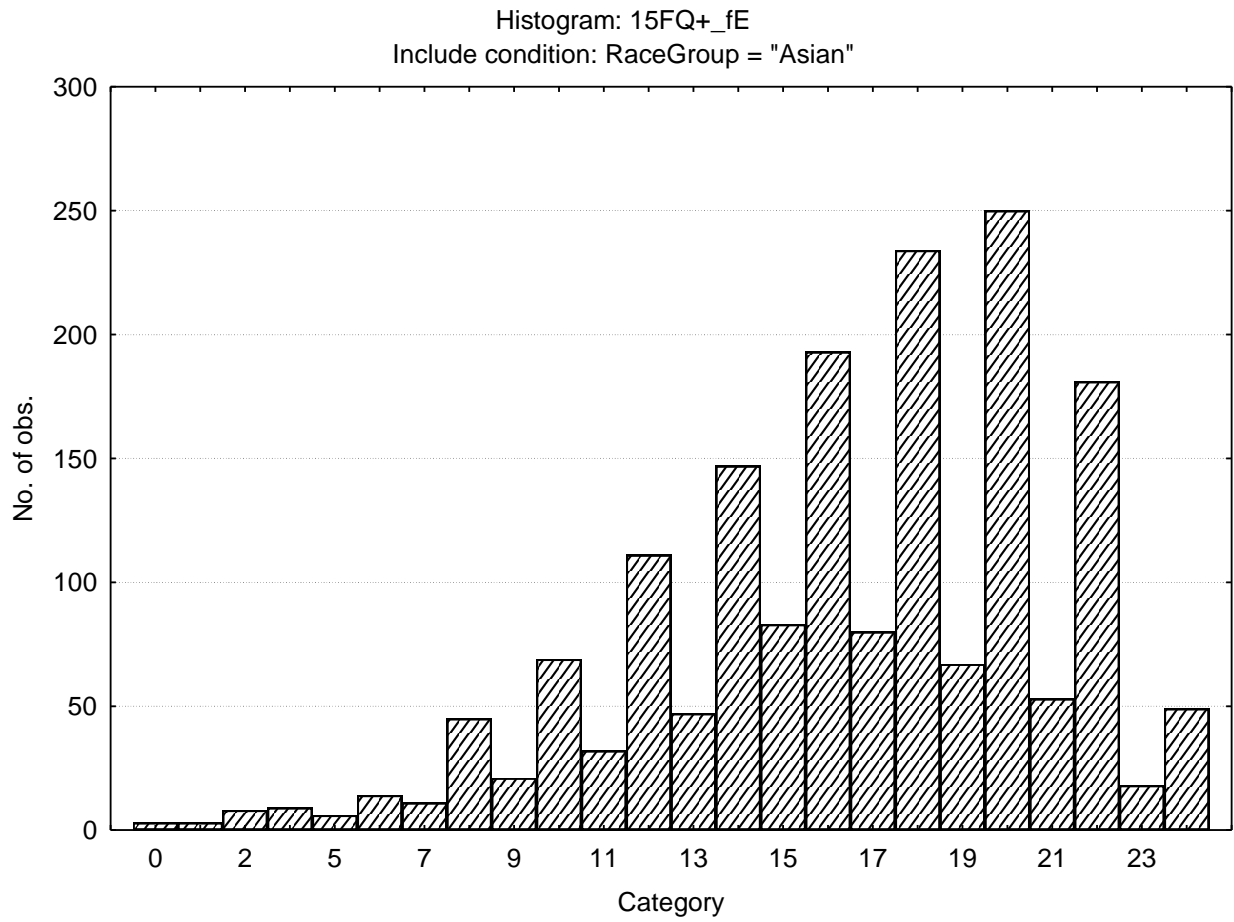
Intellectance



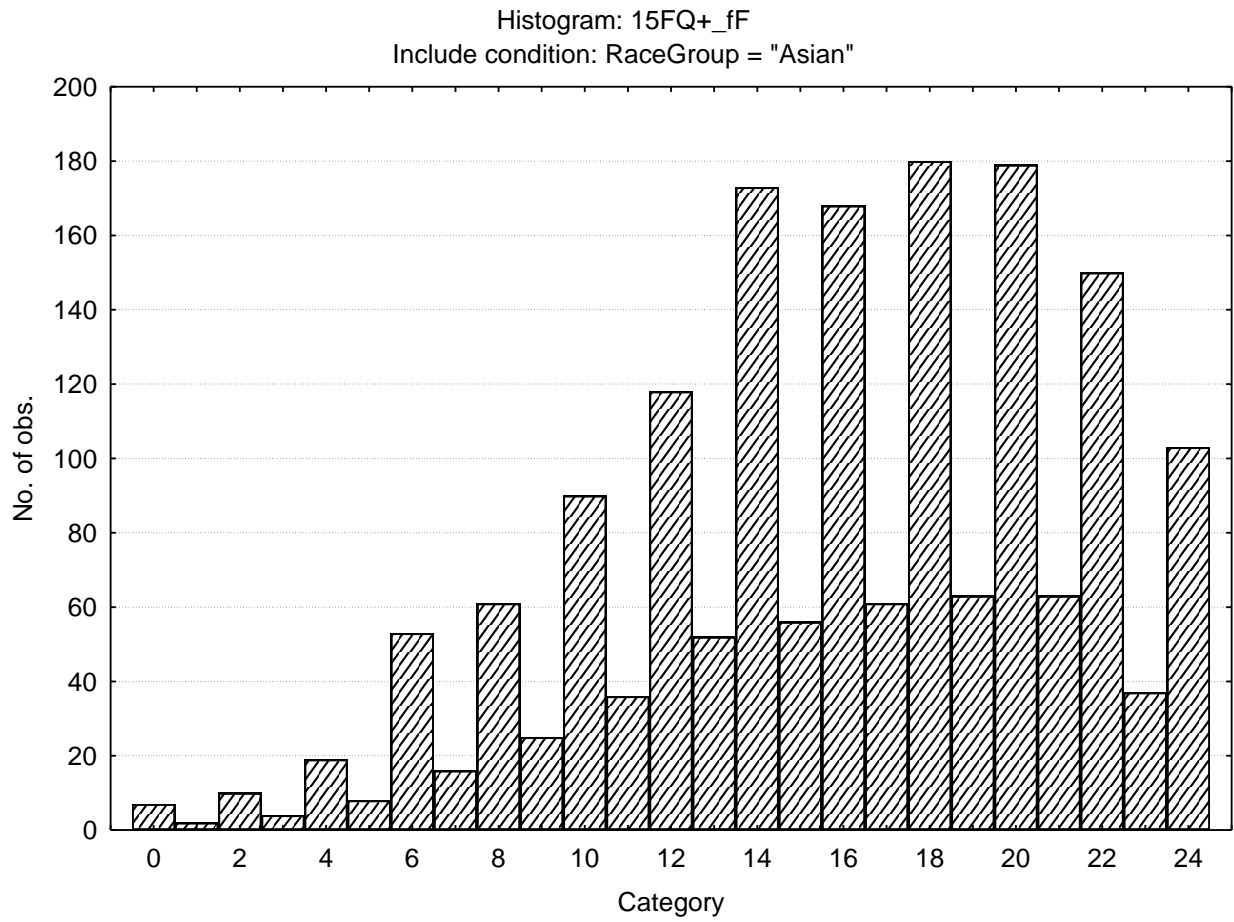
Affected by feelings – Emotionally stable



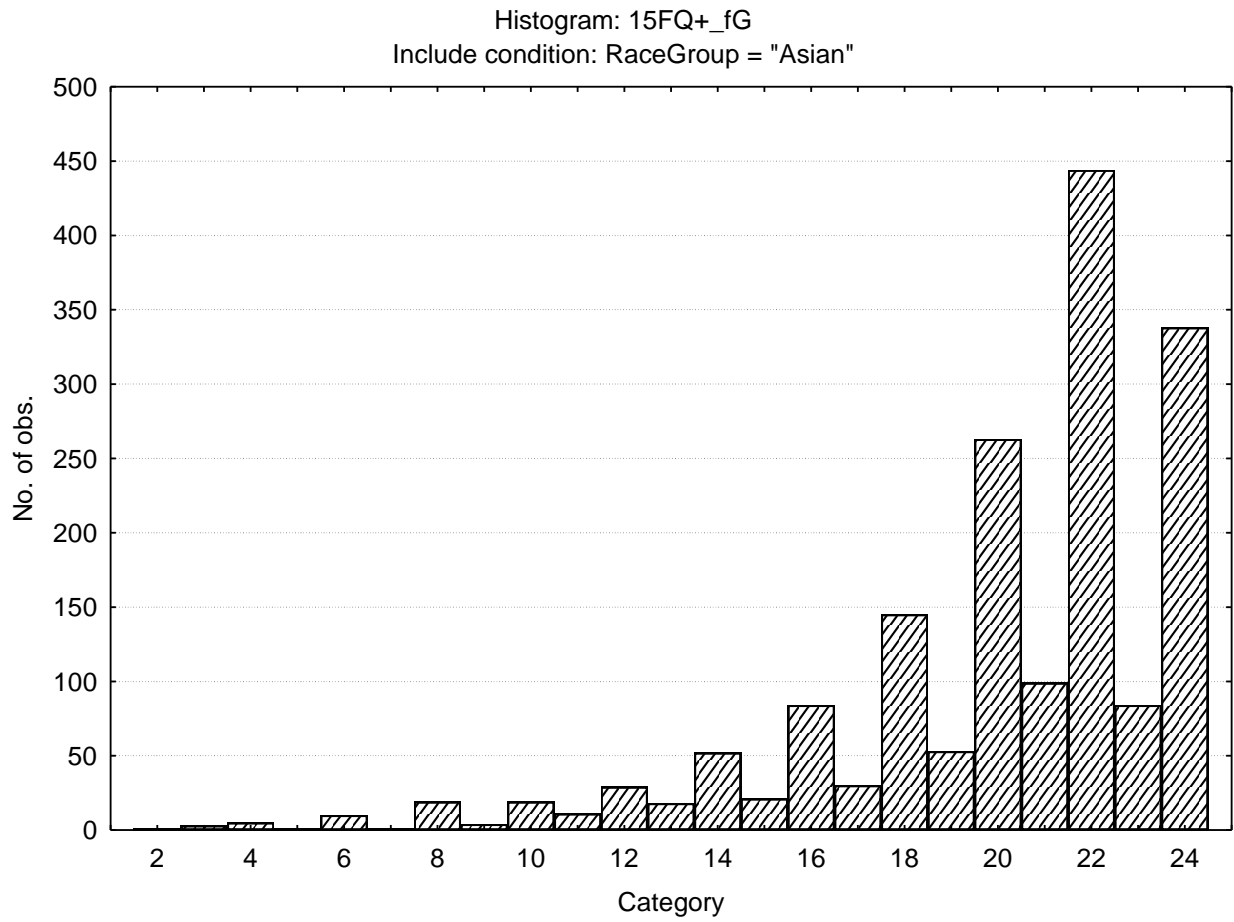
Accommodating - Dominant



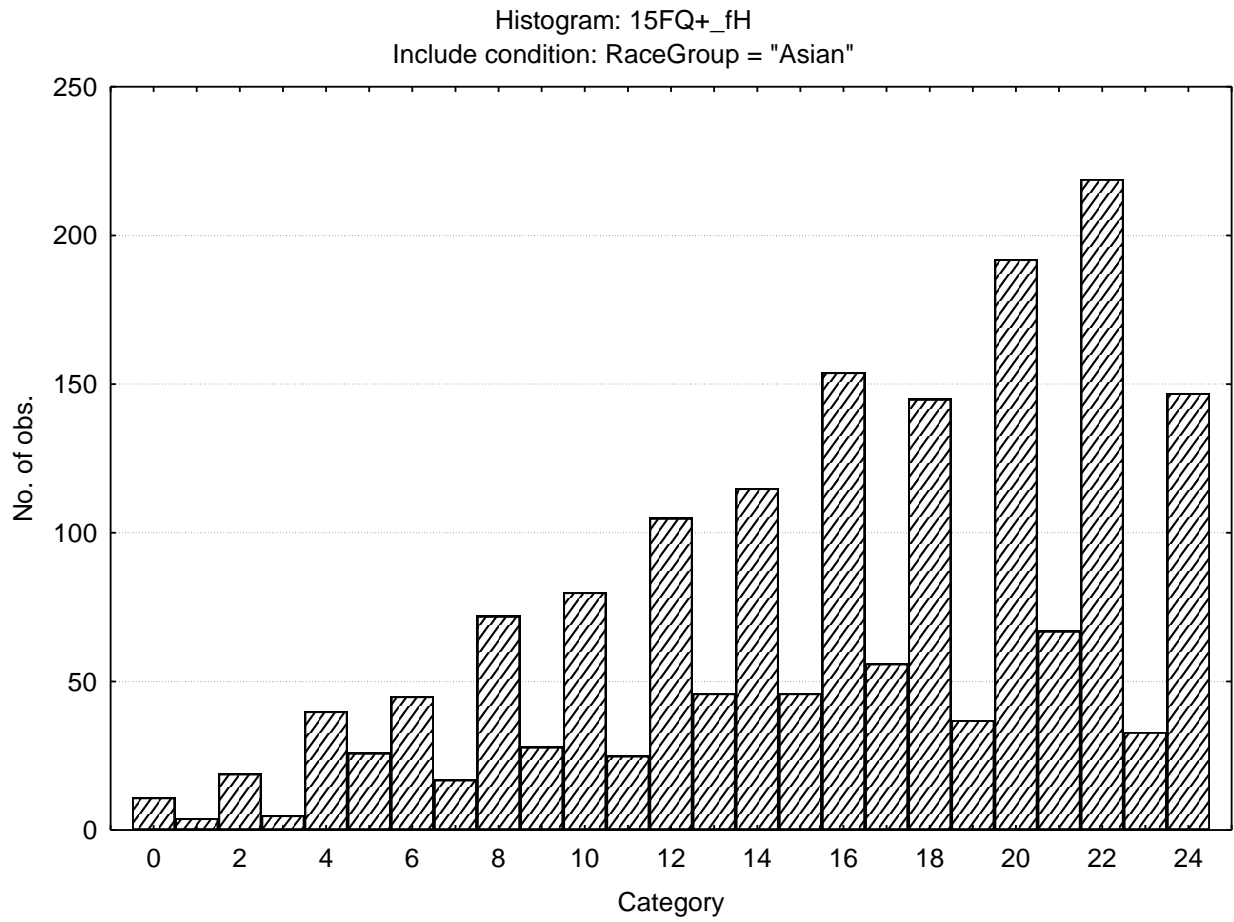
Sober serious - Enthusiastic



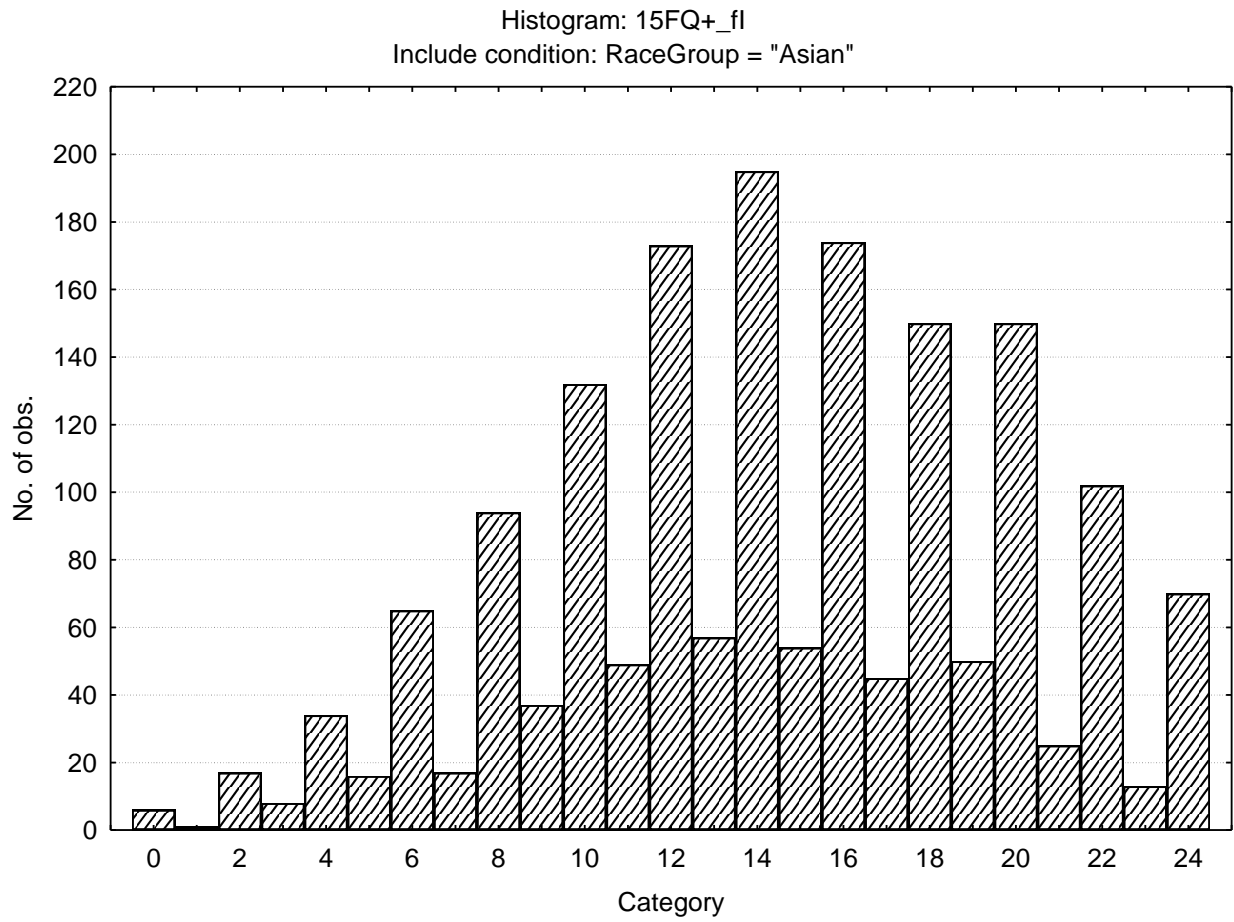
Expedient - Conscientious



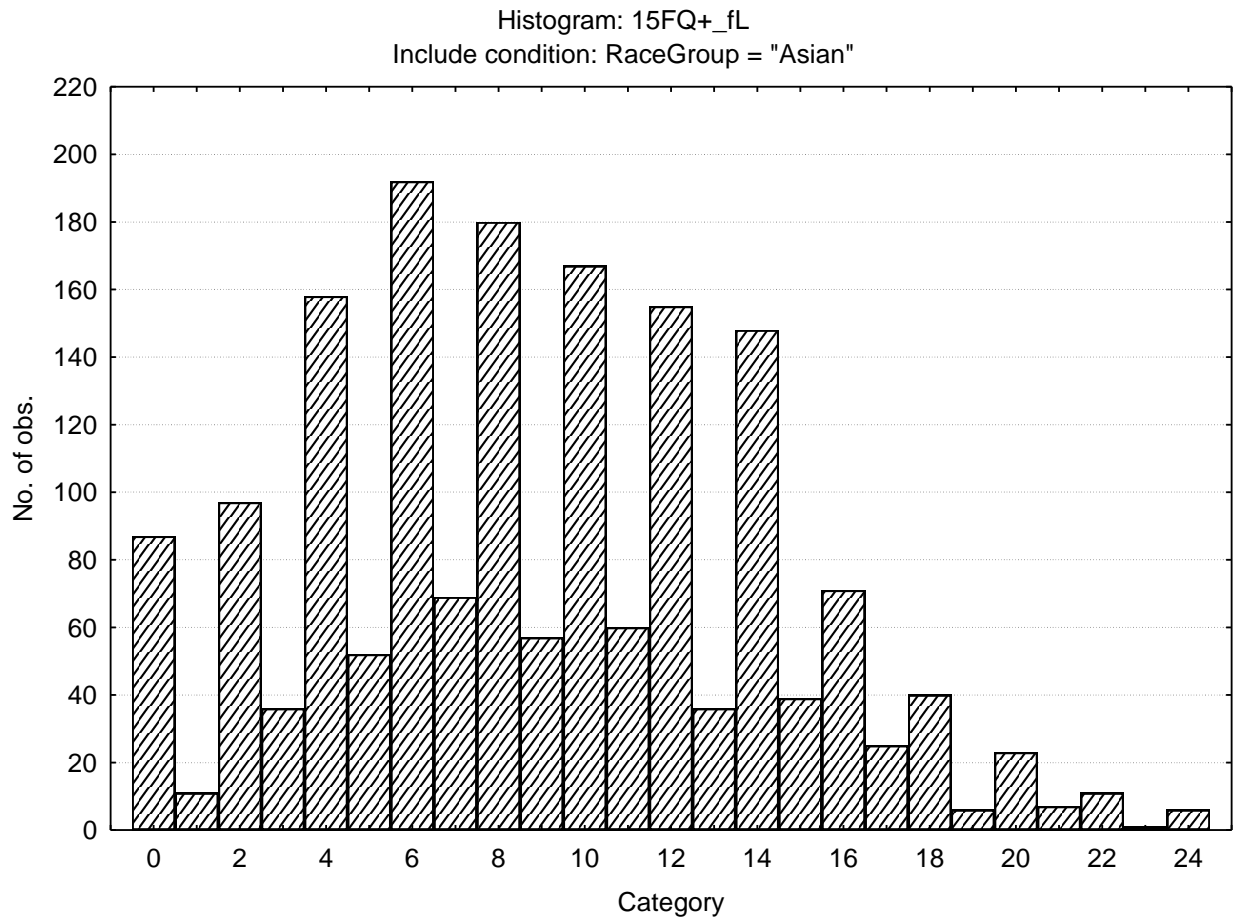
Retiring - Socially Bold



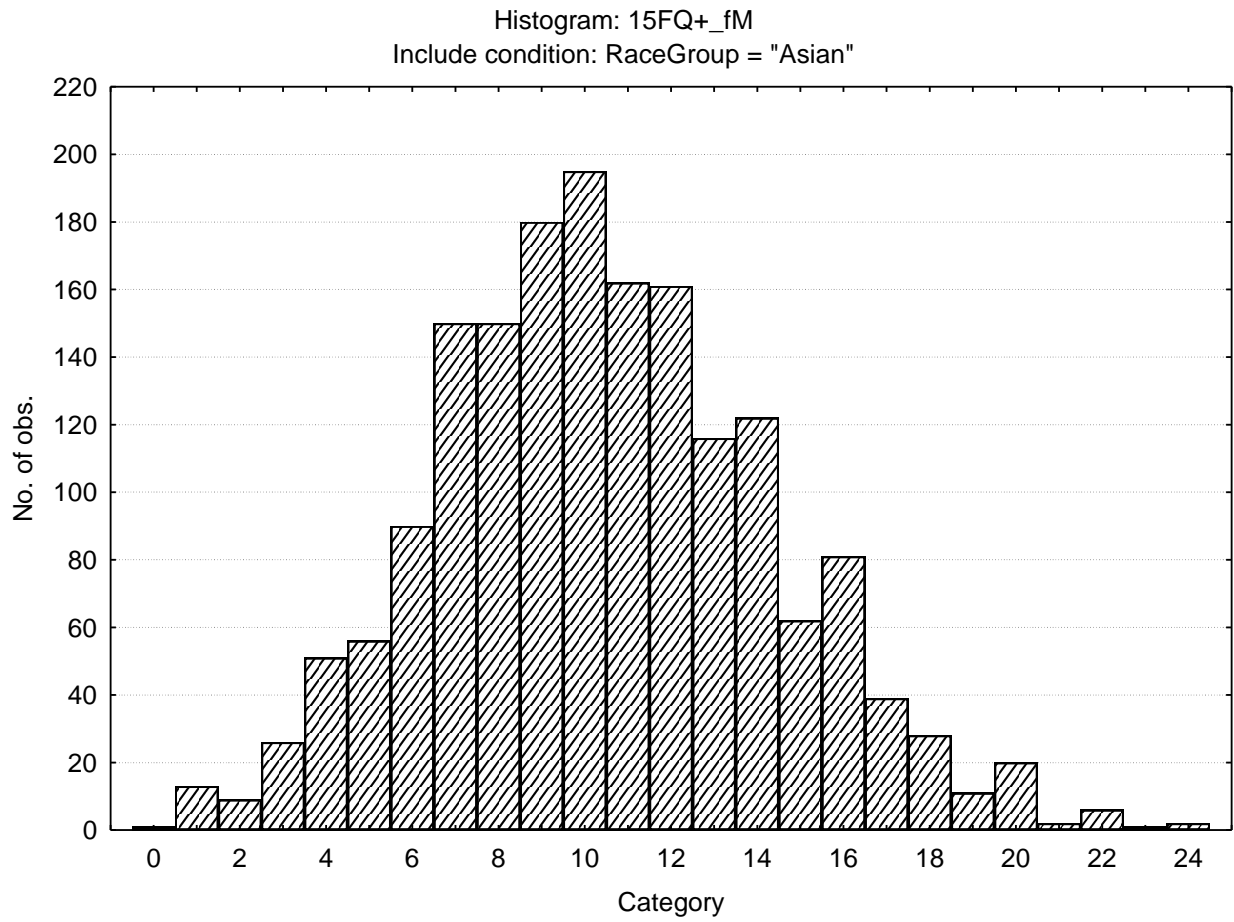
Tough minded – Tender minded



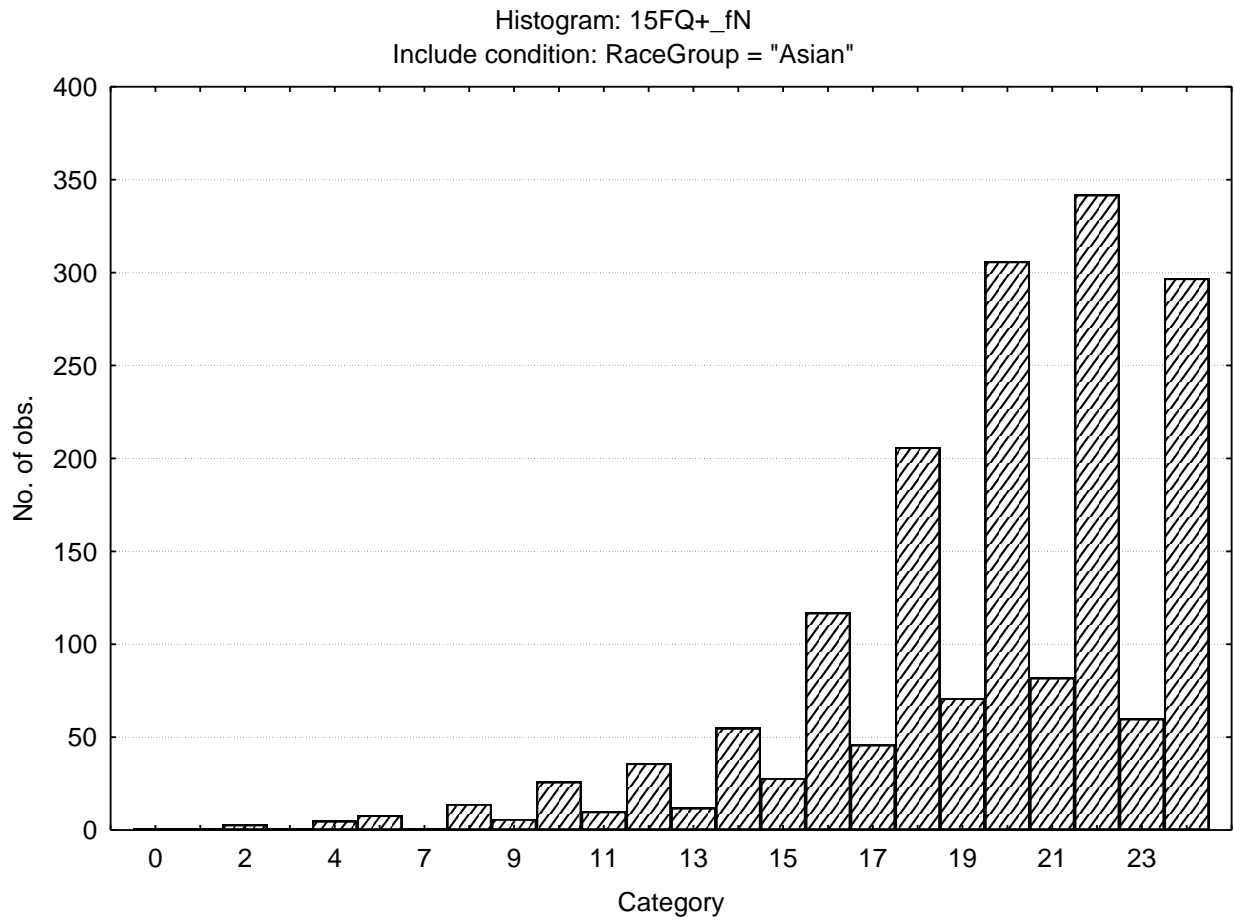
Trusting - Suspicious



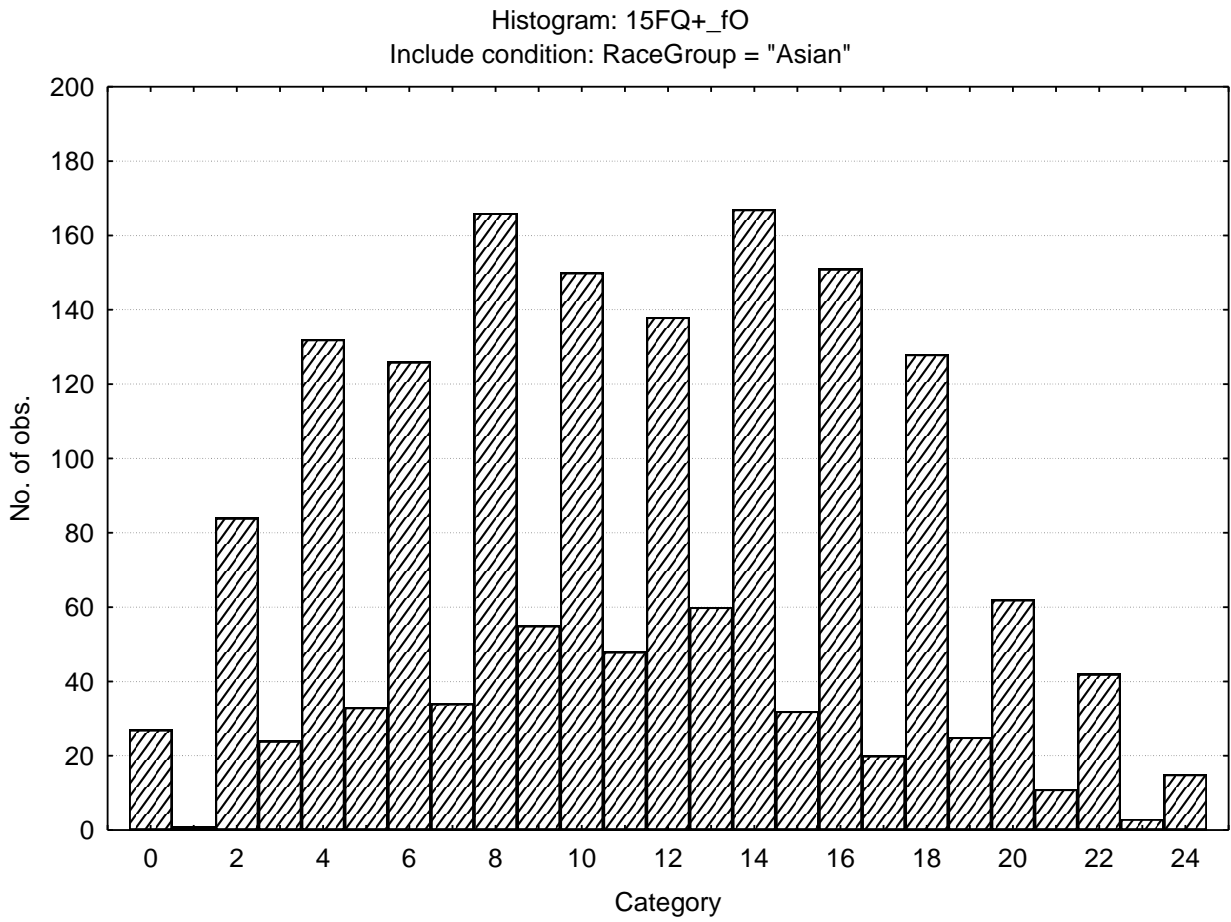
Concrete - Abstract



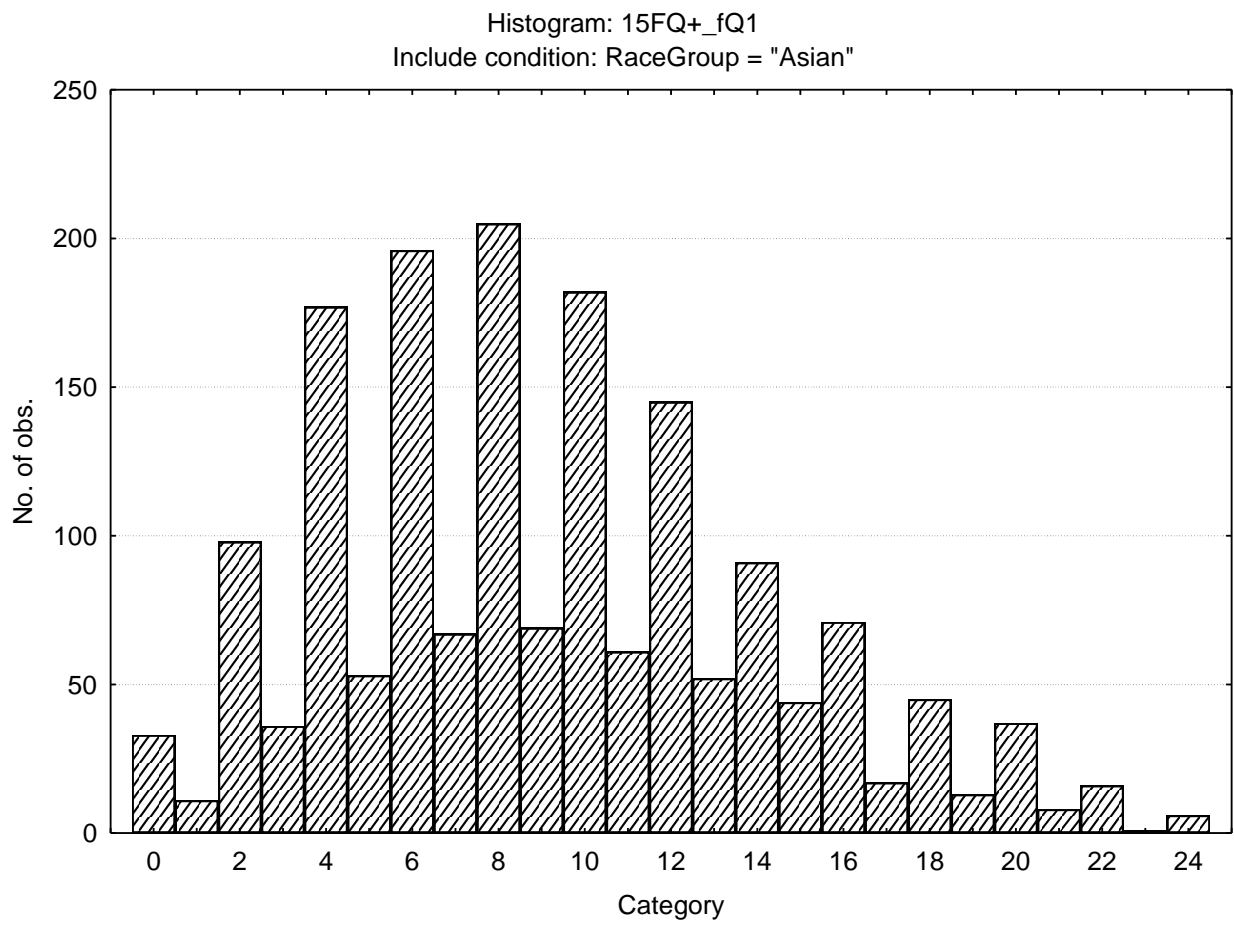
Direct - Restrained



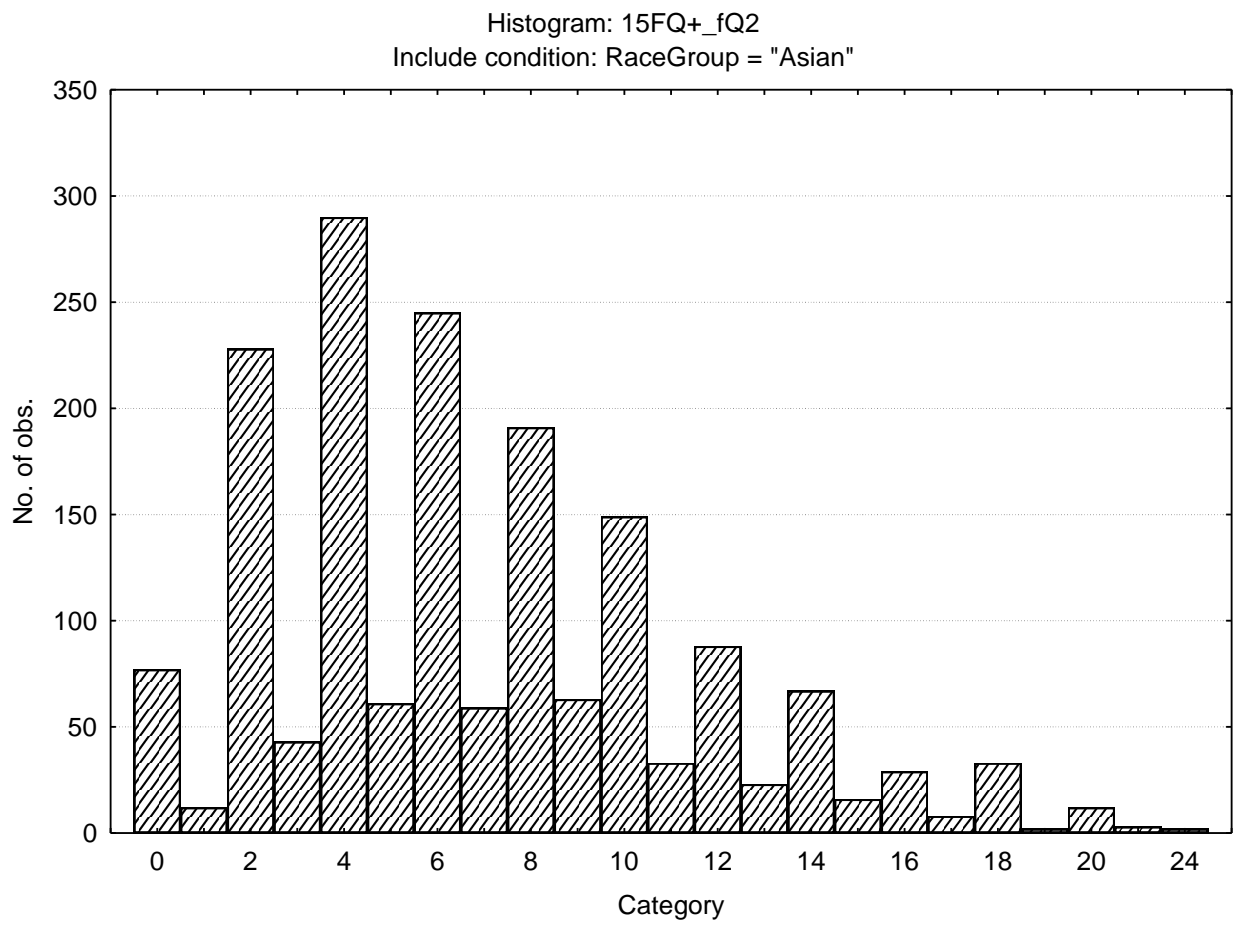
Self Assured - Apprehensive



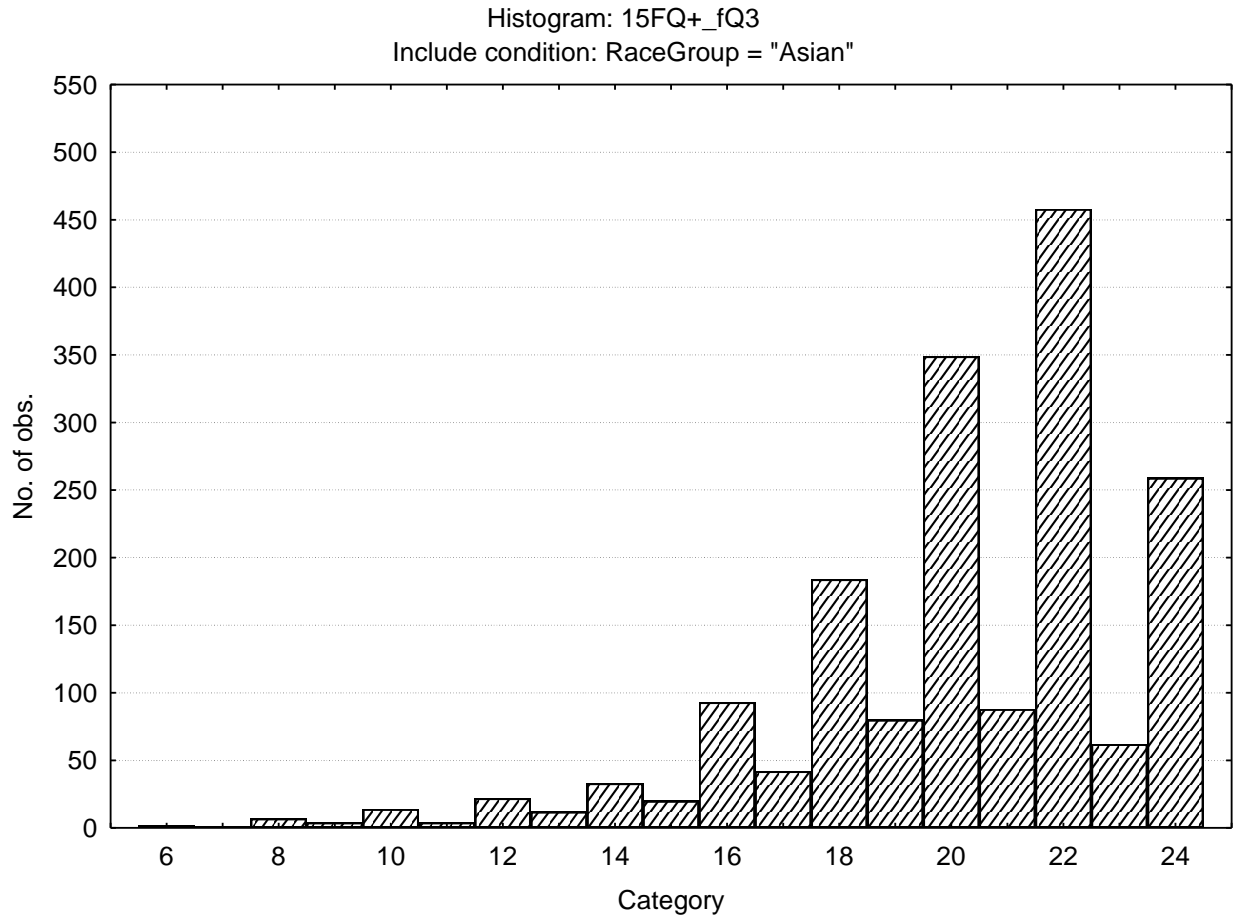
Conventional - Radical



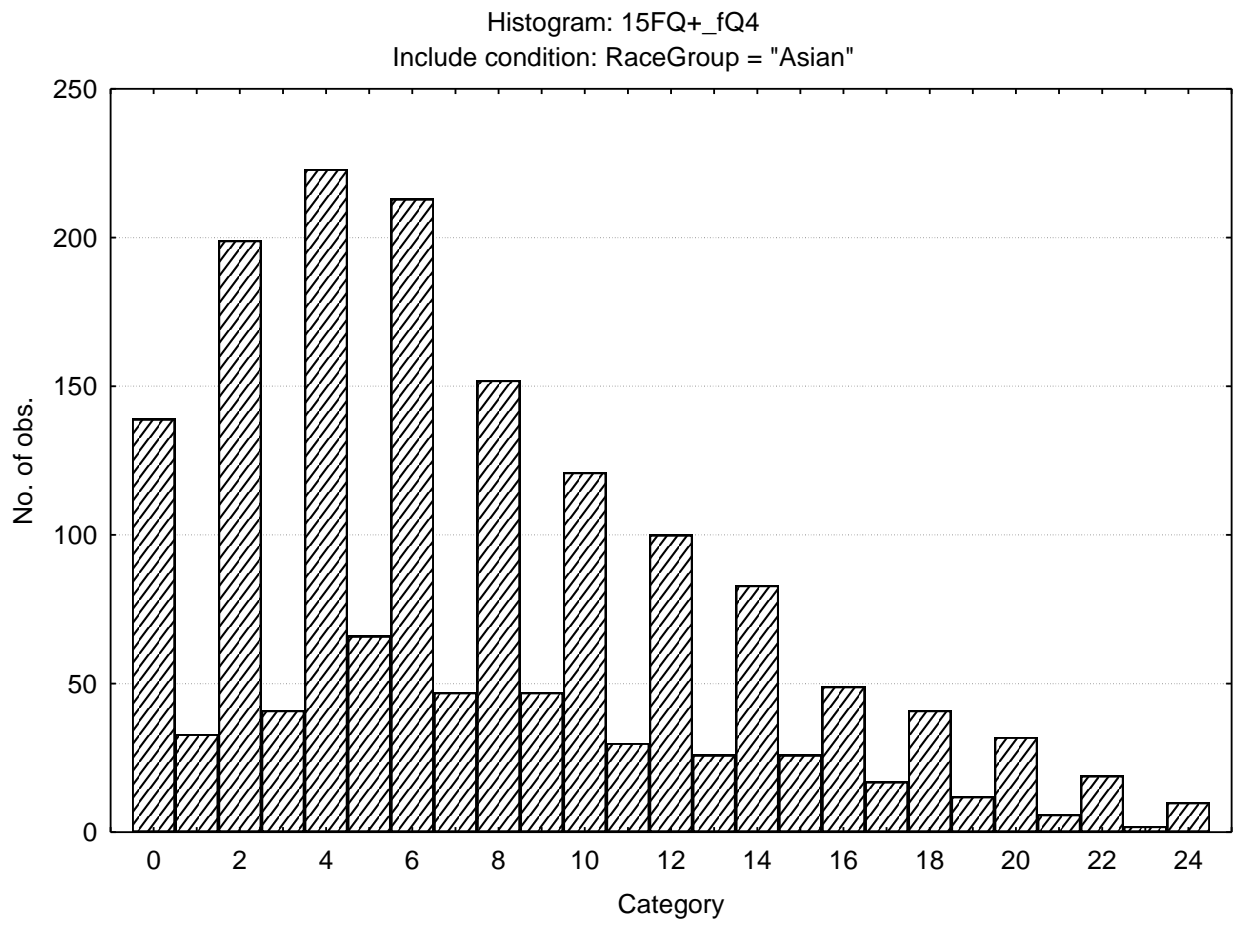
Group orientated – Self sufficient



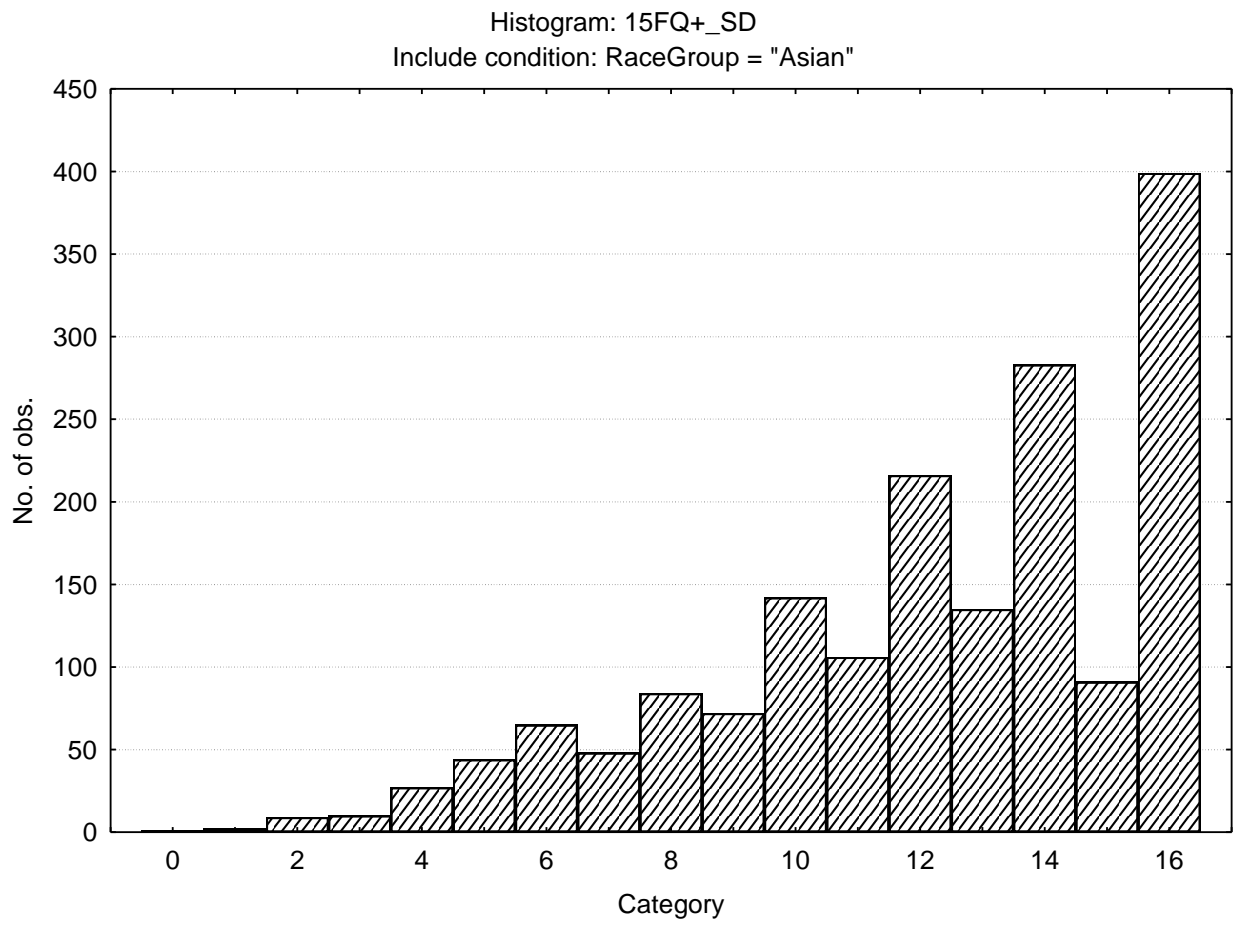
Informal – Self disciplined



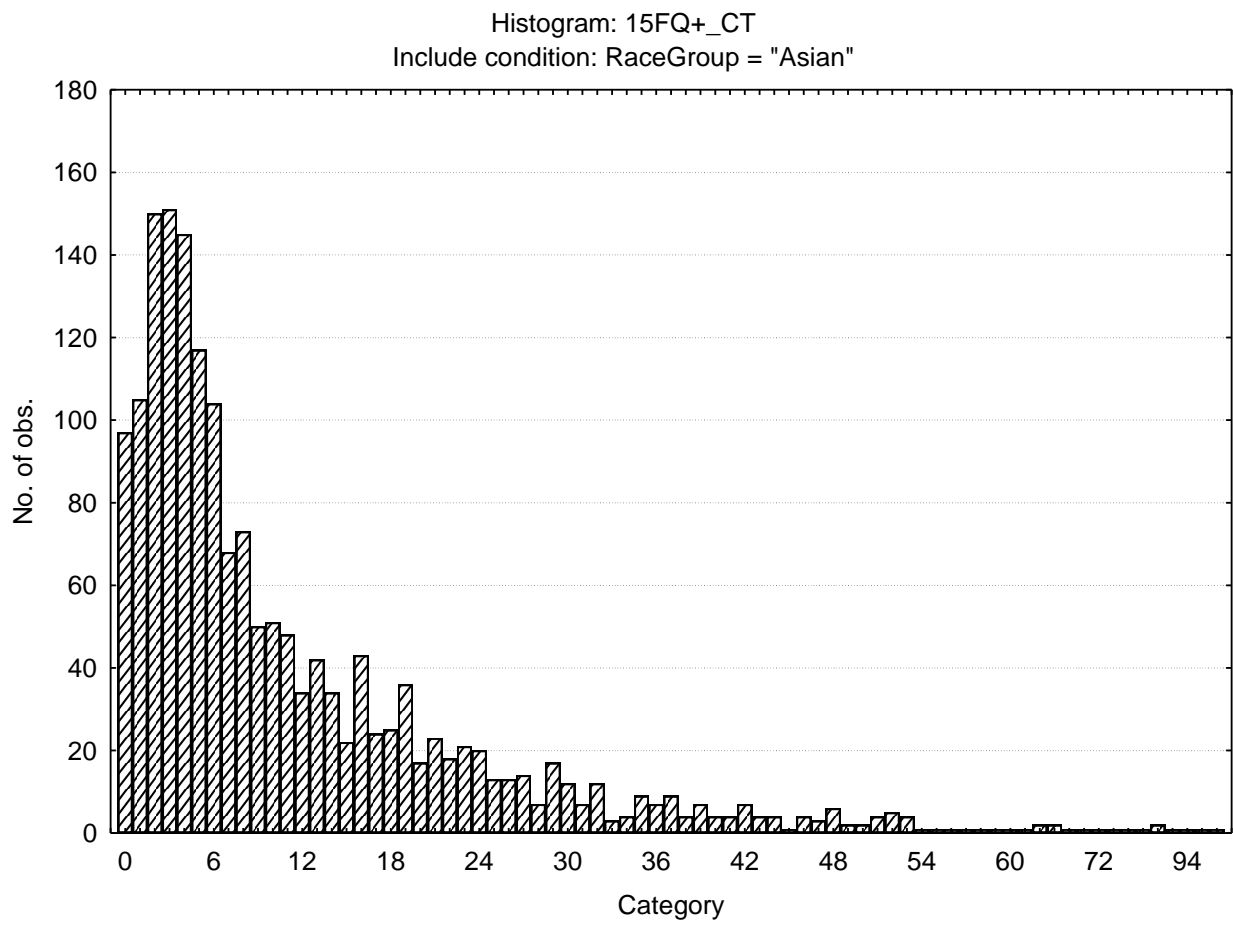
Composed - Tense driven



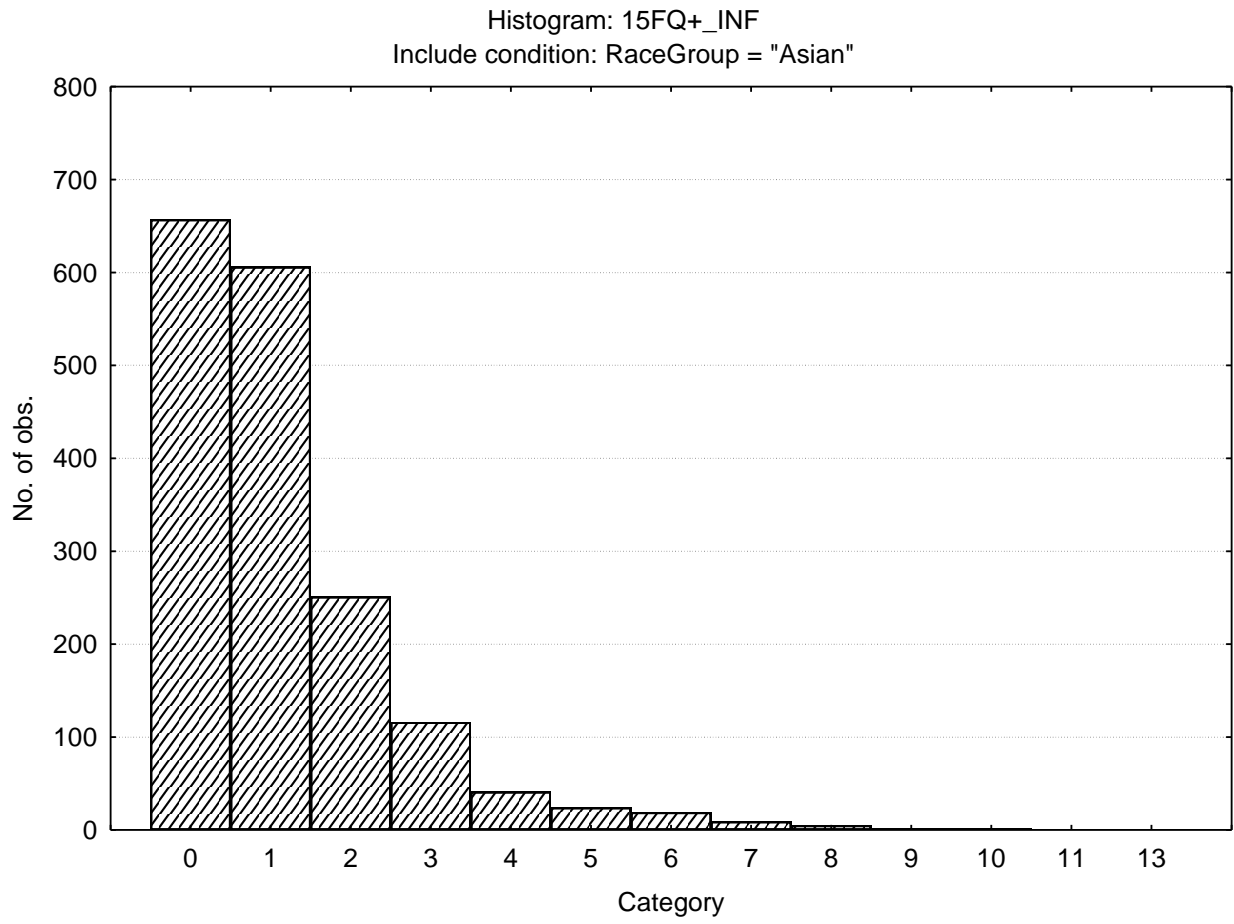
Social Desirability



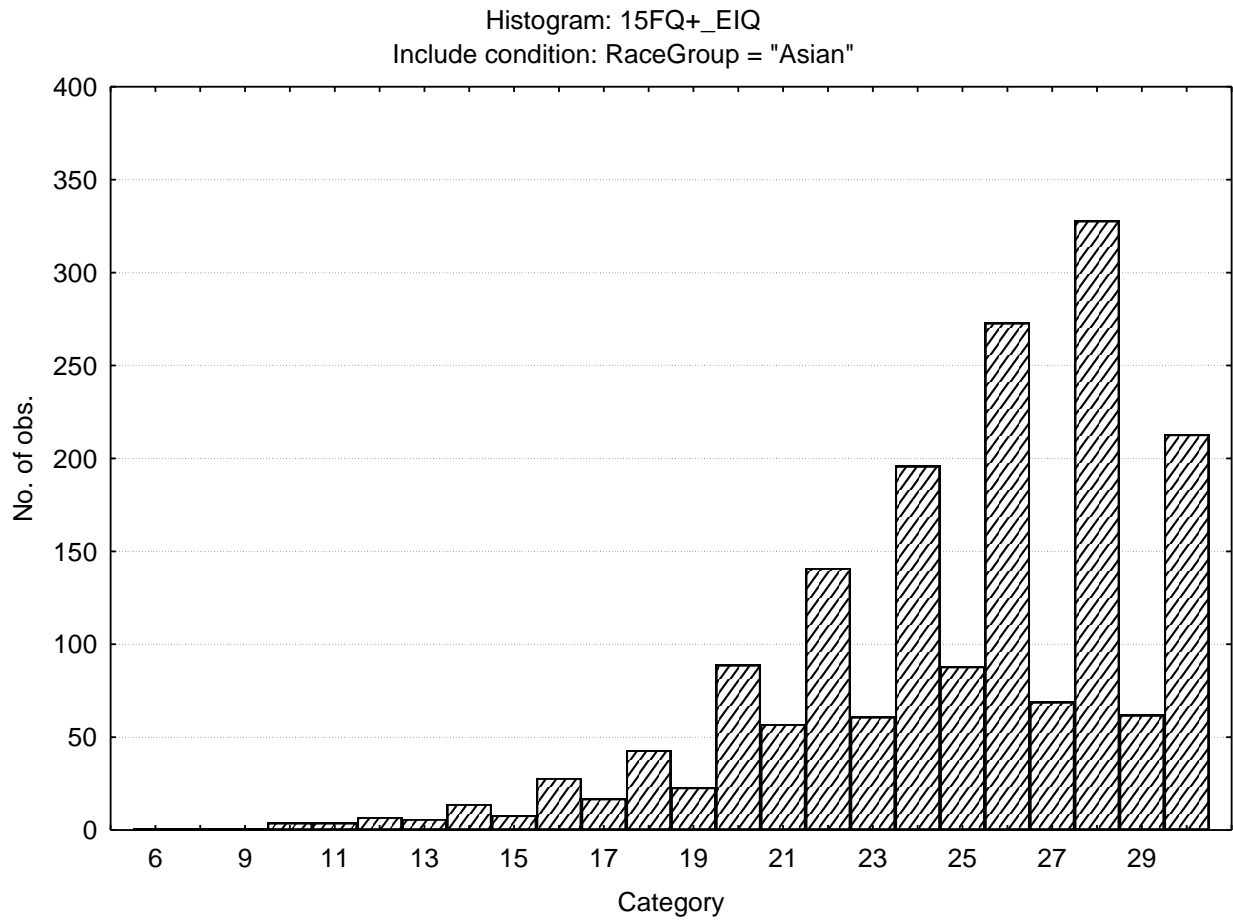
Central Tendency



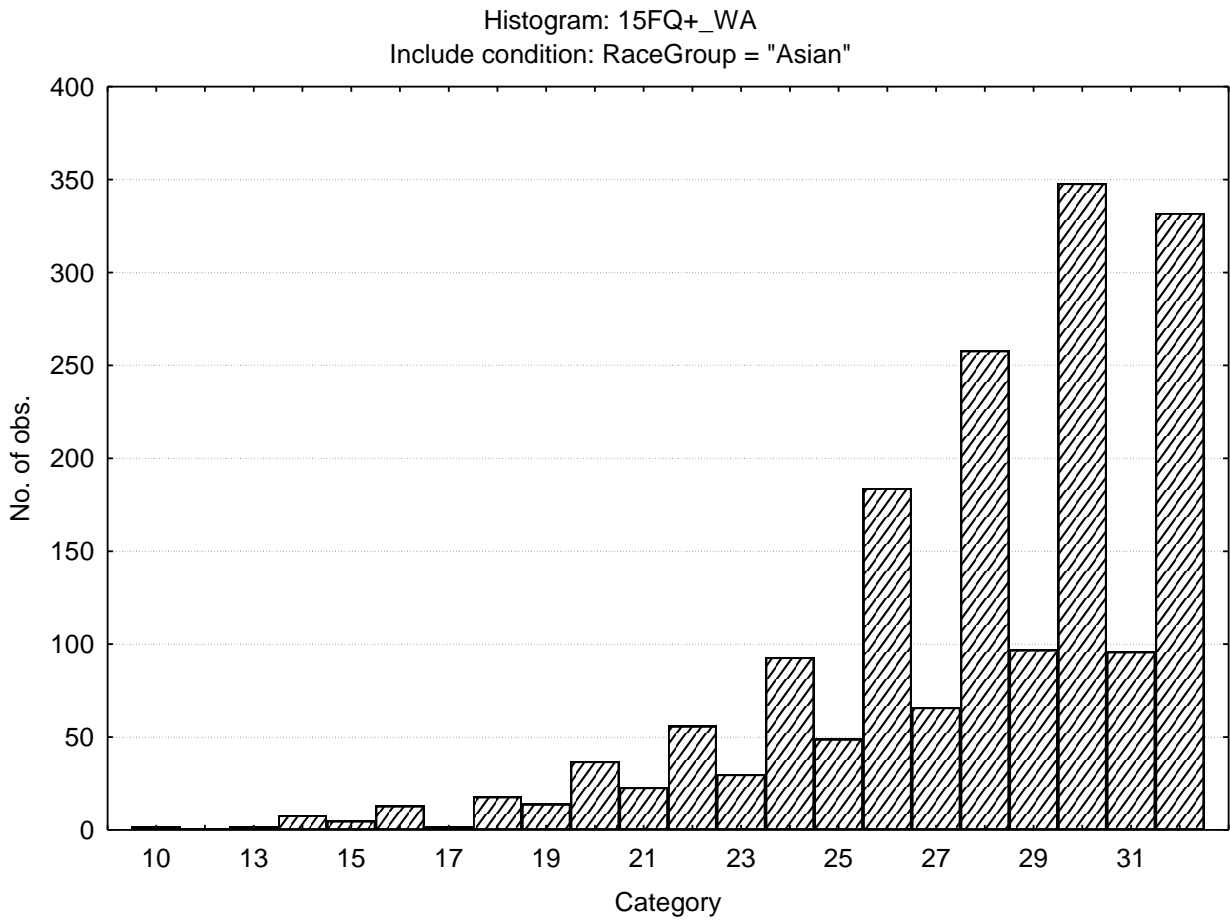
Infrequency



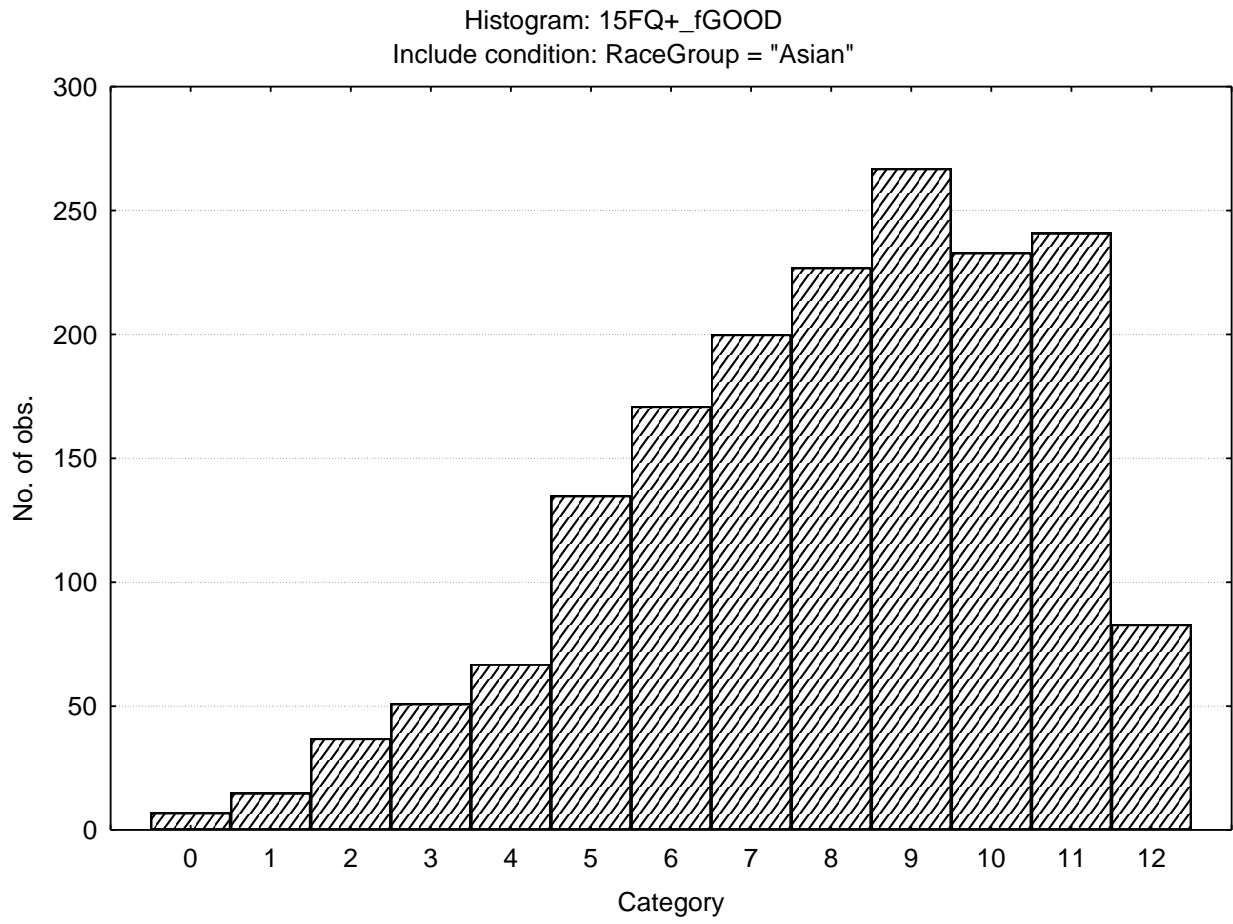
Emotional Intelligence



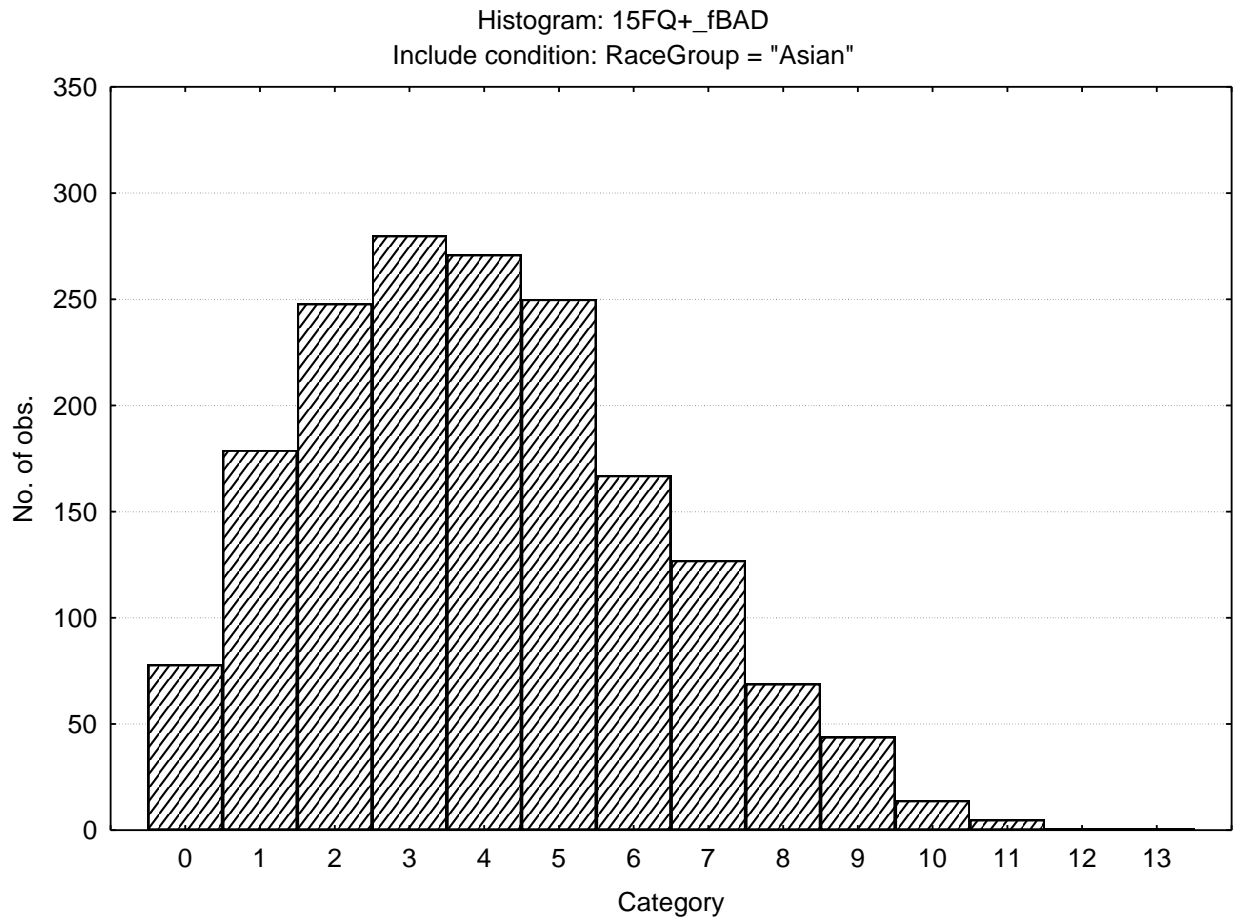
Work Attitude



Faking Good



Faking Bad



Sten Table

		<i>S10_1</i>	<i>S10_2</i>	<i>S10_3</i>	<i>S10_4</i>	<i>S10_5</i>	<i>S10_6</i>	<i>S10_7</i>	<i>S10_8</i>	<i>S10_9</i>	<i>S10_10</i>
15FQ+_fA	<i>Distant aloof - empathic</i>	2-12	13-14	15-16	17-17	18-19	20-21	22-22	23-24		
15FQ+_B	<i>Intellectance</i>	0-13	14-15	16-17	18-18	19-20	21-22	23-24			
15FQ+_fC	<i>Affected by feelings - emotionally stable</i>	0-8	9-11	12-13	14-15	16-17	18-19	20-22	23-24		
15FQ+_fE	<i>Accommodating - Dominant</i>	0-7	8-9	10-12	13-14	15-16	17-18	19-21	22-23	24-24	
15FQ+_fF	<i>Sober serious - Enthusiastic</i>	0-5	6-8	9-10	11-13	14-15	16-18	19-21	22-23	24-24	
15FQ+_fG	<i>Expedient - Conscientious</i>	2-12	13-14	15-16	17-18	19-20	21-22	23-23	24-24		
15FQ+_fH	<i>Retiring - Socially bold</i>	0-4	5-7	8-10	11-13	14-16	17-19	20-21	22-24		
15FQ+_fI	<i>Tough Minded - Tender minded</i>	0-3	4-6	7-9	10-11	12-14	15-17	18-19	20-22	23-24	
15FQ+_fL	<i>Trusting - Suspicious</i>	0--1	0-1	2-3	4-6	7-8	9-11	12-14	15-16	17-19	20-24
15FQ+_fM	<i>Concrete - Abstract</i>	0-2	3-4	5-6	7-8	9-10	11-12	13-14	15-16	17-18	19-24
15FQ+_fN	<i>Direct - Restrained</i>	0-11	12-13	14-15	16-17	18-19	20-21	22-23	24-24		
15FQ+_fO	<i>Self-assured - Apprehensive</i>	0-0	1-2	3-5	6-8	9-11	12-13	14-16	17-19	20-22	23-24
15FQ+_fQ1	<i>Conventional - Radical</i>	0--1	0-1	2-4	5-6	7-9	10-11	12-14	15-16	17-19	20-24

		<i>S10_1</i>	<i>S10_2</i>	<i>S10_3</i>	<i>S10_4</i>	<i>S10_5</i>	<i>S10_6</i>	<i>S10_7</i>	<i>S10_8</i>	<i>S10_9</i>	<i>S10_10</i>
15FQ+_fQ2	<i>Group - orientated - Self-sufficient</i>	0--1	0-0	1-2	3-4	5-6	7-9	10-11	12-13	14-15	16-24
15FQ+_fQ3	<i>Informal- self disciplined</i>	6-14	15-15	16-17	18-18	19-20	21-21	22-23	24-24		
15FQ+_fQ4	<i>Composed - tense driven</i>	0--1	0-0	1-2	3-4	5-7	8-10	11-13	14-15	16-18	19-24
15FQ+_SD	<i>Social desirability</i>	0-5	6-6	7-8	9-10	11-12	13-13	14-15	16-16		
15FQ+_CT	<i>Central Tendency</i>	0--1	0-0	1-1	2-4	5-11	12-18	19-24	25-31	32-37	38-125
15FQ+_INF	<i>Infrequency</i>	0--1	0-0	1-1	2-2	3-3	4-4	5-5	6-6	7-7	8-13
15FQ+_EIQ	<i>Derived score: Emotional Intelligence</i>	6-16	17-18	19-20	21-22	23-24	25-26	27-28	29-30		
15FQ+_WA	<i>Derived score: Work attitude</i>	10-20	21-22	23-24	25-25	26-27	28-29	30-31	32-32		
15FQ+_fGOOD	<i>Faking good</i>	0-2	3-4	5-5	6-6	7-7	8-9	10-10	11-11	12-12	
15FQ+_fBAD	<i>Faking bad</i>	0--1	0-0	1-1	2-2	3-3	4-5	6-6	7-7	8-8	9-13