

Clerical Test Battery Norm Group: South Africans, race Asian, updated 2012

Composition of the sample

The sample consisted of South Africans who gave their race as Asian or Indian, tested by Psytech SA and collaborators in the period leading up to February 2012. Not all respondents completed the entire Clerical Test Battery, therefore biographical particulars are reported separately for the different subtests of the Clerical Test Battery.

Composition of the sample: Verbal Reasoning

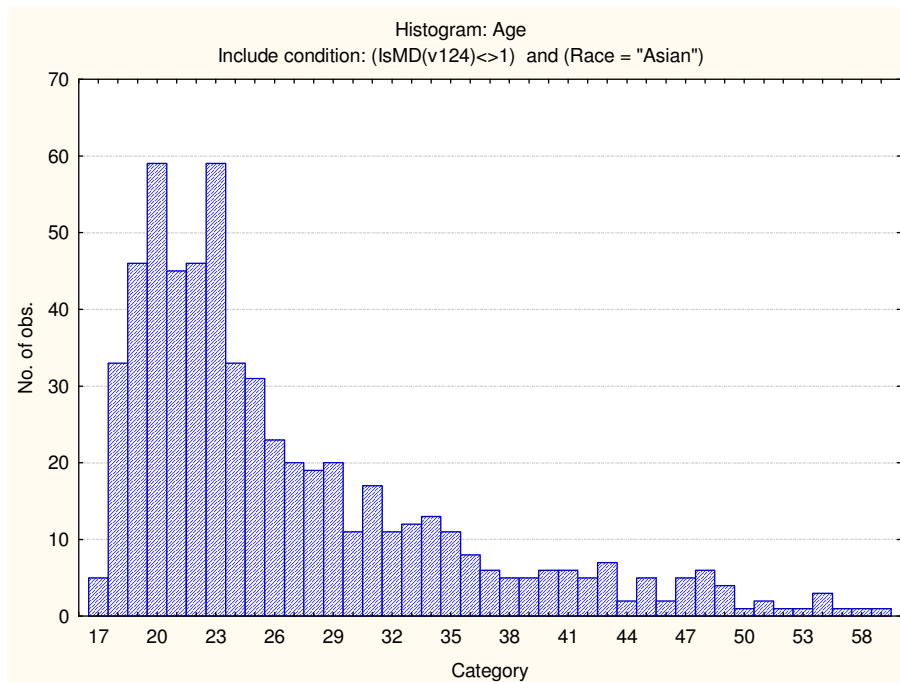
Category	Frequency table: Sex			
	Count	Cumulative Count	Percent	Cumulative Percent
F	358	358	58.21138	58.2114
M	254	612	41.30081	99.5122
U	3	615	0.48780	100.0000
Missing	0	615	0.00000	100.0000

Category	Frequency table: Education			
	Count	Cumulative Count	Percent	Cumulative Percent
Grade 12	423	423	68.78049	68.7805
Under Gr 12	21	444	3.41463	72.1951
Degree	57	501	9.26829	81.4634
Certificate	3	504	0.48780	81.9512
Post Graduate	10	514	1.62602	83.5772
Technikon	32	546	5.20325	88.7805
Diploma	30	576	4.87805	93.6585
Missing	39	615	6.34146	100.0000

Category	Frequency table: Language			
	Count	Cumulative Count	Percent	Cumulative Percent
isiZulu	5	5	0.81301	0.8130
Afrikaans	2	7	0.32520	1.1382
isiXhosa	1	8	0.16260	1.3008
Sesotho	2	10	0.32520	1.6260
Setswana	2	12	0.32520	1.9512
Sepedi	4	16	0.65041	2.6016
English	581	597	94.47154	97.0732
Missing	18	615	2.92683	100.0000

Category	Frequency table: Language Group			
	Count	Cumulative Count	Percent	Cumulative Percent
Indigenous	14	14	2.27642	2.2764
English	581	595	94.47154	96.7480
Afrikaans	2	597	0.32520	97.0732
Missing	18	615	2.92683	100.0000

Variable	Descriptive Statistics: Age					
	Mean	Std.Dev	Minimum	Maximum	N	No.cases Missing
Age	26.65494	8.326085	17.00000	61.00000	597	18



Composition of the sample: Numerical Ability Test

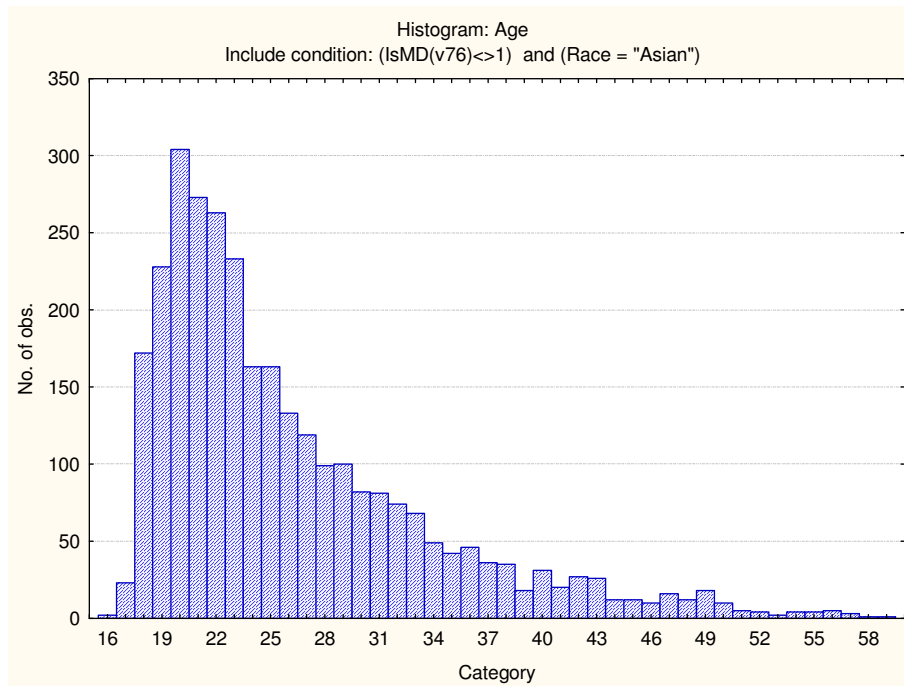
Category	Frequency table: Sex			
	Count	Cumulative Count	Percent	Cumulative Percent
F	1984	1984	64.85780	64.8578
M	1072	3056	35.04413	99.9019
U	3	3059	0.09807	100.0000
Missing	0	3059	0.00000	100.0000

Category	Frequency table: Education			
	Count	Cumulative Count	Percent	Cumulative Percent
Grade 12	2167	2167	70.84014	70.8401
Under Gr 12	151	2318	4.93625	75.7764
Degree	146	2464	4.77280	80.5492
Certificate	32	2496	1.04609	81.5953
Post Graduate	57	2553	1.86335	83.4586
Technikon	108	2661	3.53057	86.9892
Diploma	319	2980	10.42824	97.4175
Missing	79	3059	2.58254	100.0000

Category	Frequency table: Language			
	Count	Cumulative Count	Percent	Cumulative Percent
isiZulu	35	35	1.14416	1.1442
Afrikaans	8	43	0.26152	1.4057
isiXhosa	8	51	0.26152	1.6672
siSwati	2	53	0.06538	1.7326
Sesotho	5	58	0.16345	1.8960
Setswana	8	66	0.26152	2.1576
Sepedi	16	82	0.52305	2.6806
Xitsonga	1	83	0.03269	2.7133
English	2766	2849	90.42171	93.1350
isiNdebele	1	2850	0.03269	93.1677
Missing	209	3059	6.83230	100.0000

Category	Frequency table: Language Group			
	Count	Cumulative Count	Percent	Cumulative Percent
Indigenous	76	76	2.48447	2.4845
English	2766	2842	90.42171	92.9062
Afrikaans	8	2850	0.26152	93.1677
Missing	209	3059	6.83230	100.0000

Variable	Descriptive Statistics: Age					
	Mean	Std.Dev	Minimum	Maximum	N	No.cases Missing
Age	26.08221	7.541662	16.00000	61.00000	3029	30



Composition of the sample: Clerical Checking Test

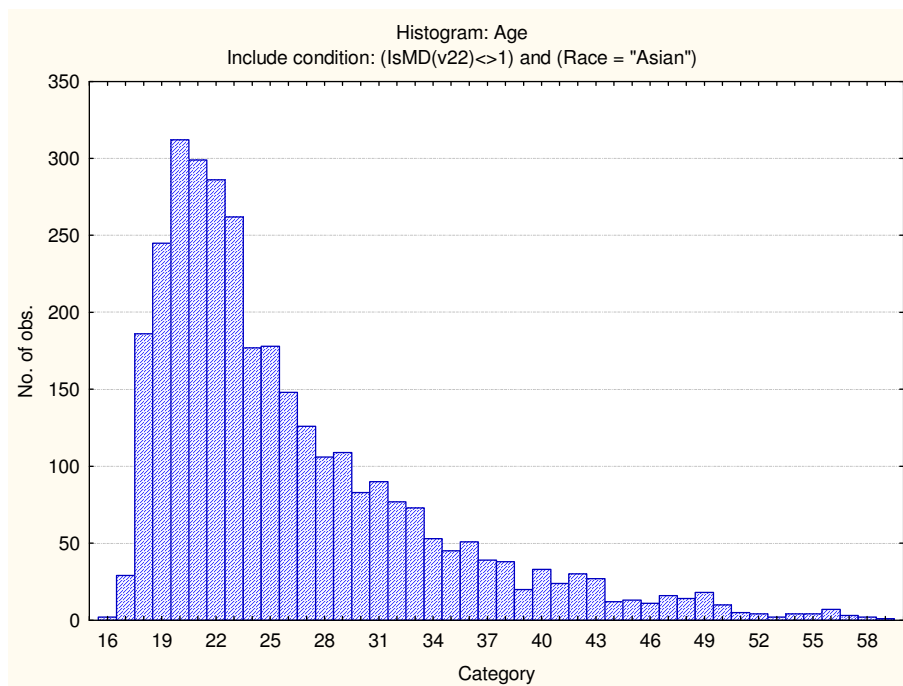
Category	Frequency table: Sex			
	Count	Cumulative Count	Percent	Cumulative Percent
F	2156	2156	65.21476	65.2148
M	1147	3303	34.69449	99.9093
U	3	3306	0.09074	100.0000
Missing	0	3306	0.00000	100.0000

Category	Frequency table: Education			
	Count	Cumulative Count	Percent	Cumulative Percent
Grade 12	2335	2335	70.62916	70.6292
Under Gr 12	164	2499	4.96068	75.5898
Degree	156	2655	4.71869	80.3085
Certificate	37	2692	1.11918	81.4277
Post Graduate	58	2750	1.75439	83.1821
Technikon	119	2869	3.59952	86.7816
Diploma	351	3220	10.61706	97.3987
Missing	86	3306	2.60133	100.0000

Category	Frequency table: Language			
	Count	Cumulative Count	Percent	Cumulative Percent
isiZulu	36	36	1.08893	1.0889
Afrikaans	8	44	0.24198	1.3309
isiXhosa	10	54	0.30248	1.6334
siSwati	2	56	0.06050	1.6939
Sesotho	5	61	0.15124	1.8451
Setswana	8	69	0.24198	2.0871
Sepedi	17	86	0.51422	2.6013
Xitsonga	1	87	0.03025	2.6316
English	3000	3087	90.74410	93.3757
isiNdebele	2	3089	0.06050	93.4362
Missing	217	3306	6.56382	100.0000

Category	Frequency table: Language Group			
	Count	Cumulative Count	Percent	Cumulative Percent
Indigenous	81	81	2.45009	2.4501
English	3000	3081	90.74410	93.1942
Afrikaans	8	3089	0.24198	93.4362
Missing	217	3306	6.56382	100.0000

Variable	Descriptive Statistics: Age					N	No.cases Missing
	Mean	Std.Dev	Minimum	Maximum			
Age	26.07514	7.534857	16.00000	61.00000		3274	32



Composition of the sample: Spelling Test

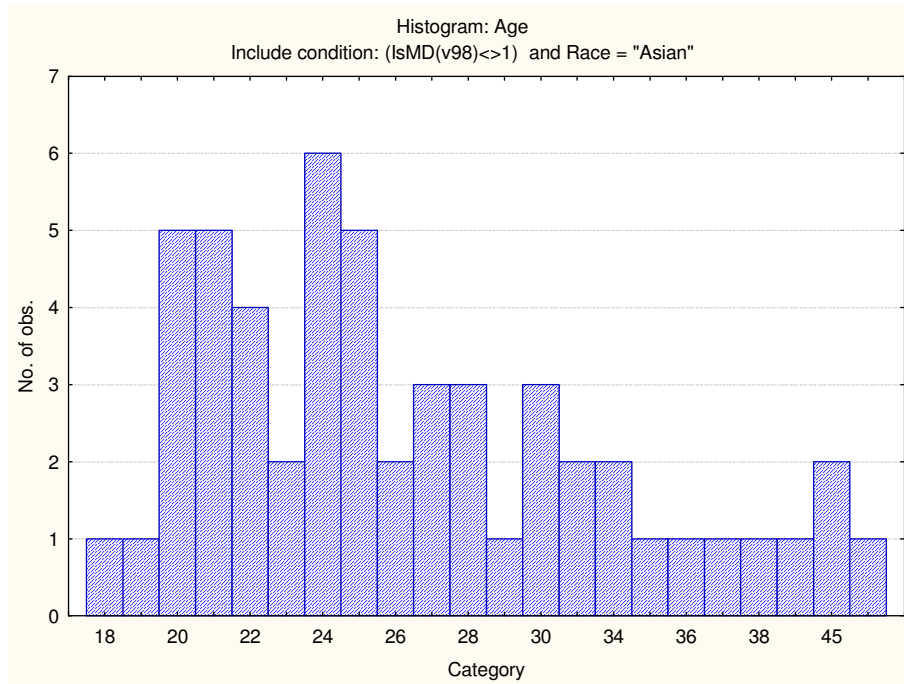
Category	Frequency table: Sex			
	Count	Cumulative Count	Percent	Cumulative Percent
F	31	31	56.36364	56.3636
M	24	55	43.63636	100.0000
Missing	0	55	0.00000	100.0000

Category	Frequency table: Education			
	Count	Cumulative Count	Percent	Cumulative Percent
Grade 12	36	36	65.45455	65.4545
Under Gr 12	1	37	1.81818	67.2727
Degree	4	41	7.27273	74.5455
Post Graduate	2	43	3.63636	78.1818
Technikon	3	46	5.45455	83.6364
Diploma	5	51	9.09091	92.7273
Missing	4	55	7.27273	100.0000

Category	Frequency table: Language			
	Count	Cumulative Count	Percent	Cumulative Percent
English	53	53	96.36364	96.3636
Missing	2	55	3.63636	100.0000

Category	Frequency table: Language Group			
	Count	Cumulative Count	Percent	Cumulative Percent
English	53	53	96.36364	96.3636
Missing	2	55	3.63636	100.0000

Variable	Descriptive Statistics : Age					
	Mean	Std.Dev	Minimum	Maximum	N	No.cases Missing
Age	27.28302	7.432717	18.00000	52.00000	53	2

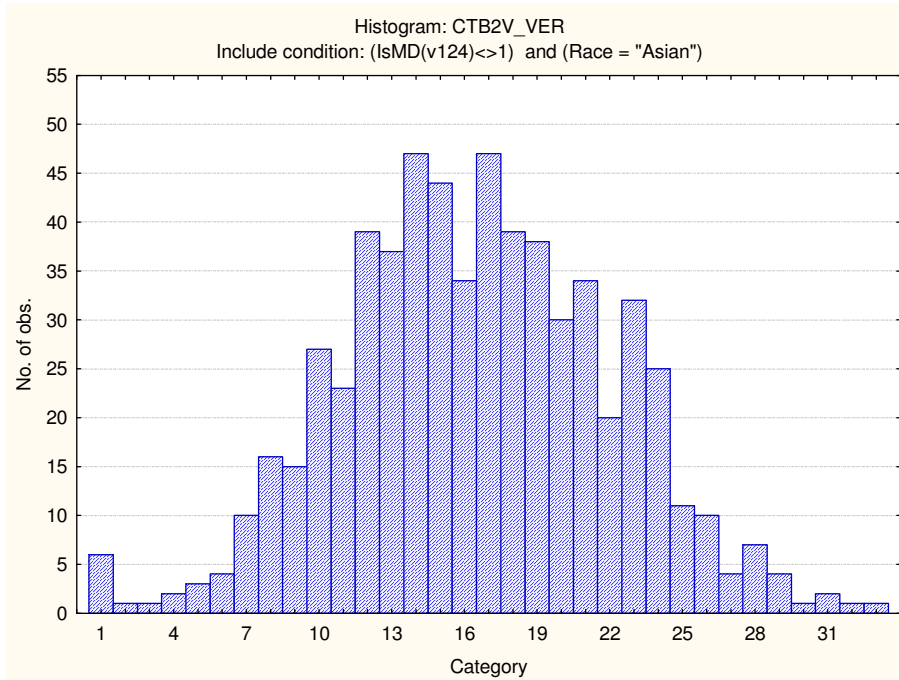


Descriptive statistics on Clerical Test Battery subtests

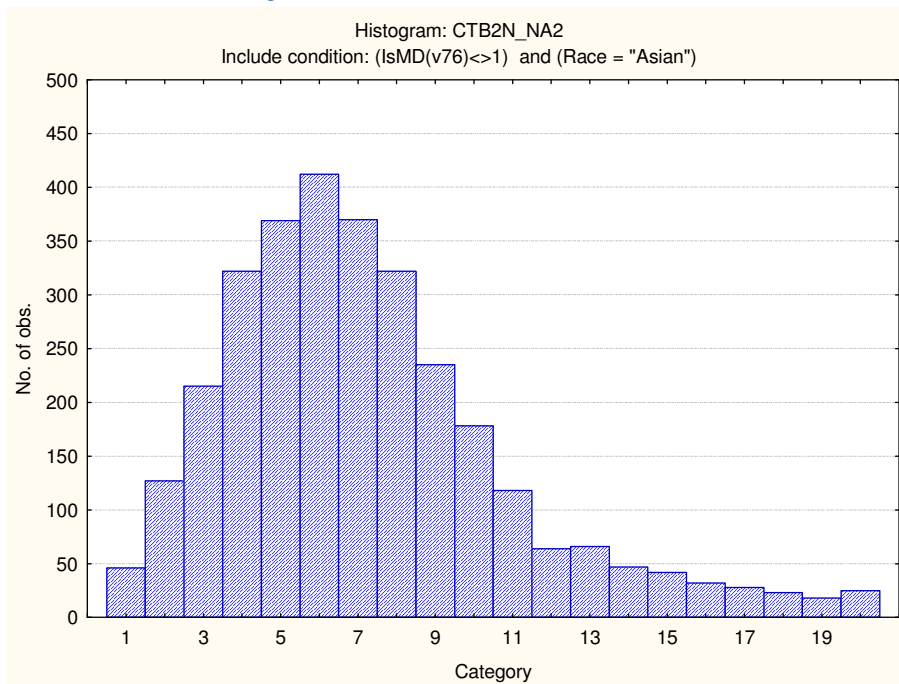
Scale	Mean	Standard deviation	Minimum score	Maximum score	N
Verbal Reasoning	16.50569	5.557184	1.00000	34.00000	615
Numerical Ability	7.213795	3.689563	1.00000	20.00000	3059
Clerical Checking Numerical	10.26370	3.379281	1.00000	26.00000	3303
Clerical Checking Verbal	9.61382	3.400675	1.00000	26.00000	3299
Clerical Checking Total	19.84785	6.570425	1.00000	52.00000	3306
Spelling	15.85455	4.904337	4.00000	22.00000	55

Frequency distributions

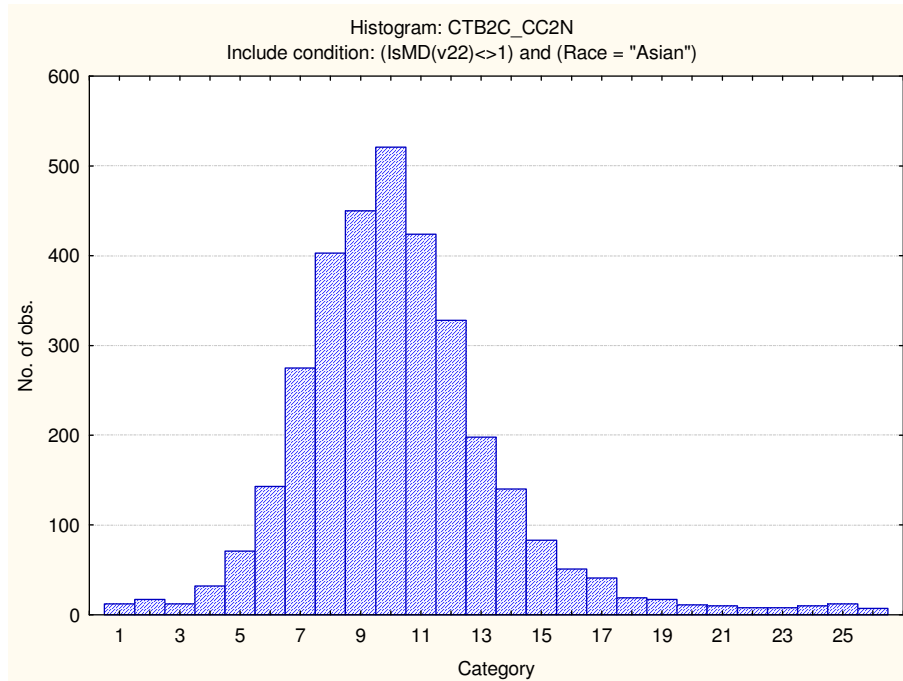
Verbal Reasoning



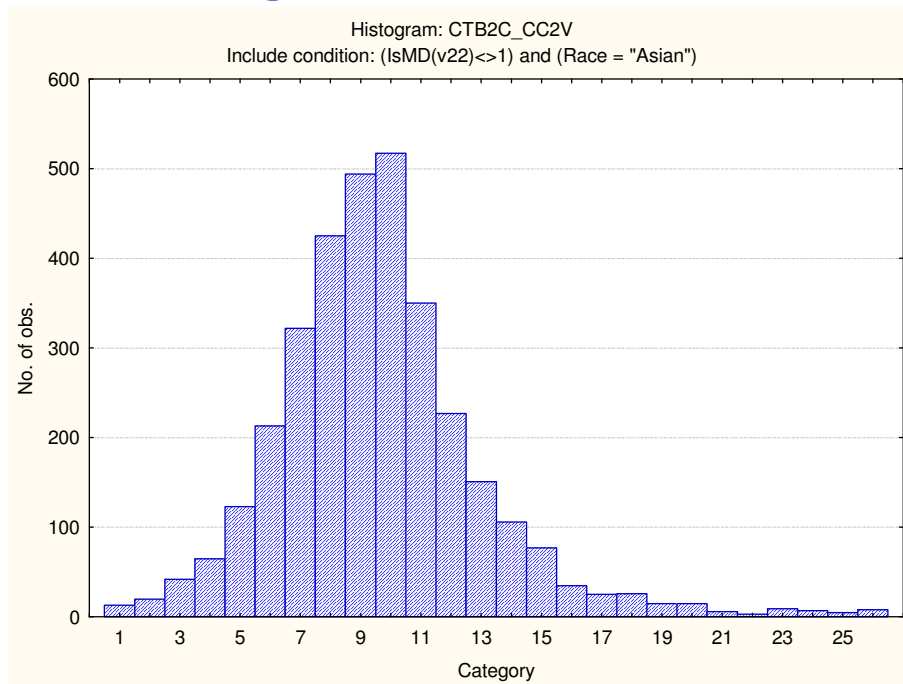
Numerical Ability



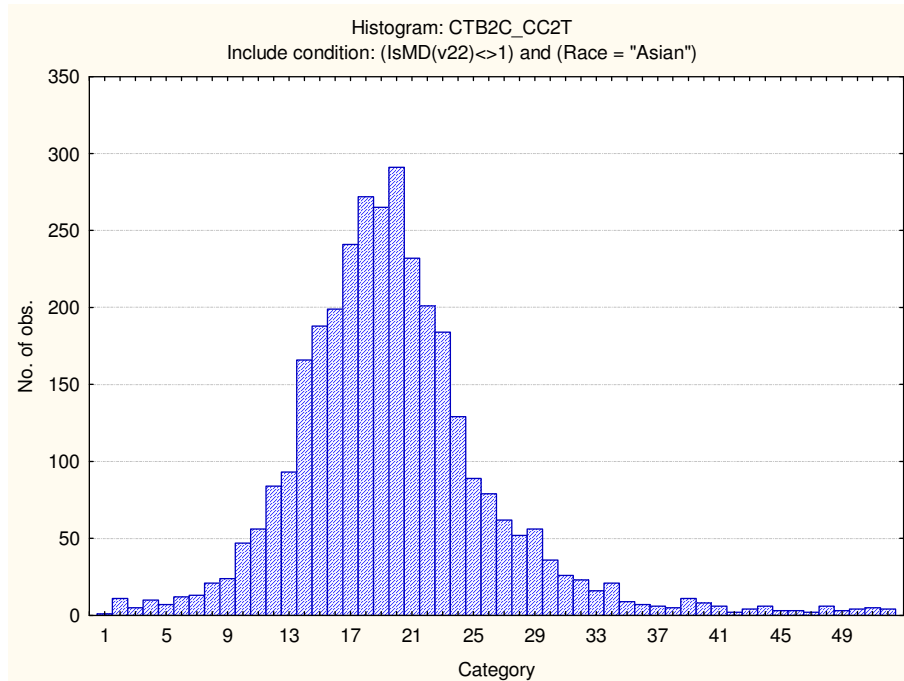
Clerical Checking Numerical



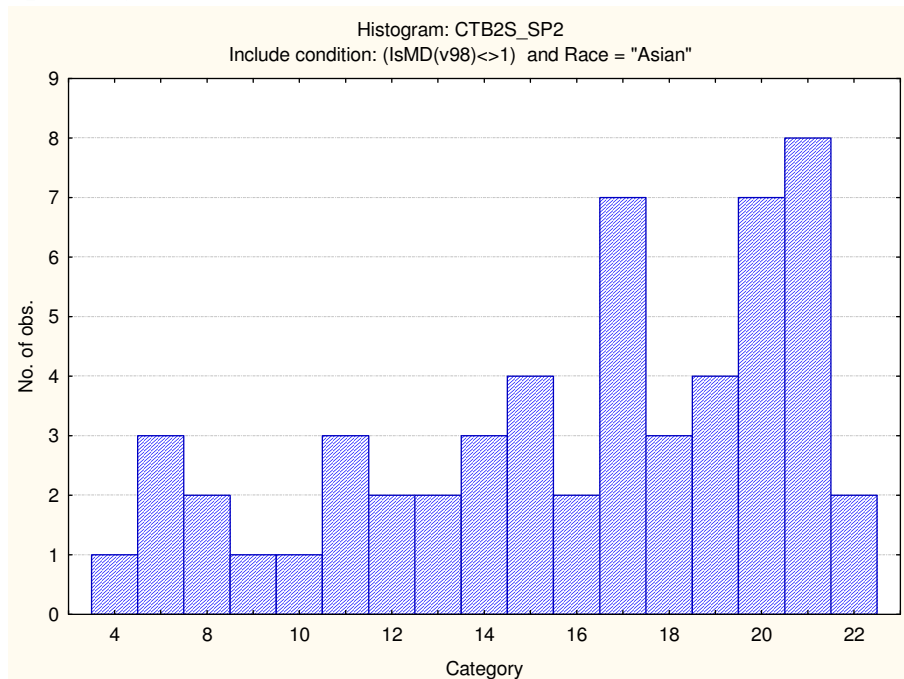
Clerical Checking Verbal



Clerical Checking Total Score



Spelling



Stanine table

	S9_1	S9_2	S9_3	S9_4	S9_5	S9_6	S9_7	S9_8	S9_9
Verbal Reasoning	1-6	7-9	10-12	13-15	16-17	18-20	21-23	24-26	27-34
Numerical Ability	1-0	1-2	3-4	5-6	7-8	9-9	10-11	12-13	14-20
Clerical Checking - Numerical	1-4	5-6	7-7	8-9	10-11	12-12	13-14	15-16	17-26
Clerical Checking - Verbal	1-3	4-5	6-7	8-8	9-10	11-12	13-13	14-15	16-26
Clerical Checking - Total	1-8	9-11	12-14	15-18	19-21	22-24	25-28	29-31	32-52
Spelling	4-7	8-9	10-12	13-14	15-17	18-19	20-21	22-22	