

15FQPlus Norm Group: SA General Population updated 2010

Sample composition

The sample consisted of South Africans tested by Psytech SA and collaborators in the period leading up to January 2010

Frequency table: Sex

	Count	Cumulative Count	Percent	Cumulative Percent
F	9389	9389	38.17132	38.1713
M	14980	24369	60.90174	99.0731
Missing	228	24597	0.92694	100.0000

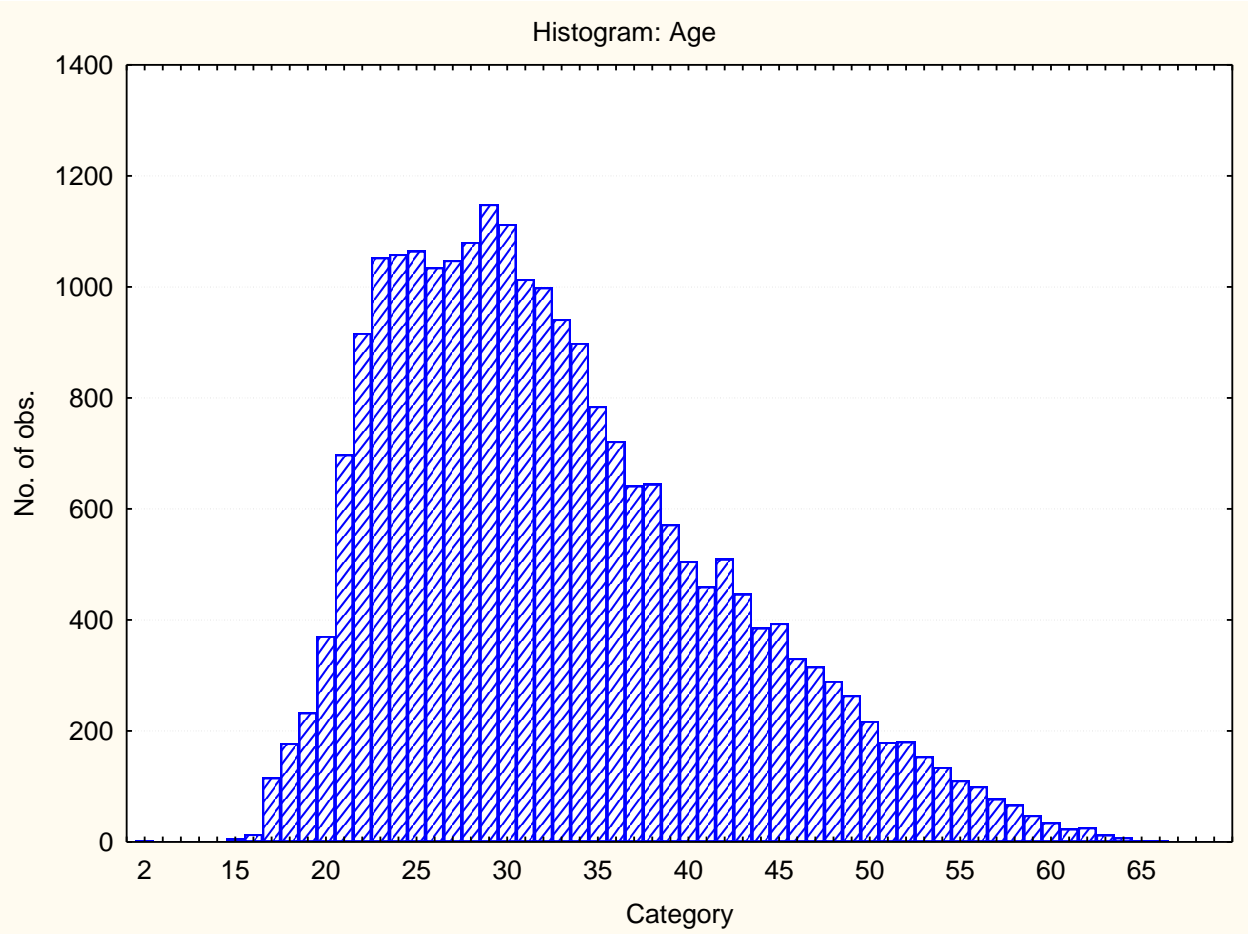
Category	Frequency table: Education			
	Count	Cumulative Count	Percent	Cumulative Percent
Grade 12	3858	3858	15.68484	15.6848
Degree	2249	6107	9.14339	24.8282
Post Graduate	1927	8034	7.83429	32.6625
Technikon	1744	9778	7.09030	39.7528
University diploma	1174	10952	4.77294	44.5258
Grade 10 or 11	376	11328	1.52864	46.0544
Vocational Training	487	11815	1.97992	48.0343
Diploma	255	12070	1.03671	49.0710
Certificate	155	12225	0.63016	49.7012
Missing	12372	24597	50.29882	100.0000

Category	Frequency table: Language			
	Count	Cumulative Count	Percent	Cumulative Percent
English	5102	5102	20.74237	20.7424
Afrikaans	2857	7959	11.61524	32.3576
isiZulu	1589	9548	6.46014	38.8177
isiXhosa	1048	10596	4.26068	43.0784
Sesotho	752	11348	3.05728	46.1357
Setswana	740	12088	3.00850	49.1442
Sepedi	298	12386	1.21153	50.3557
Xitsonga	184	12570	0.74806	51.1038
Tshivenda	146	12716	0.59357	51.6974
siSwati	103	12819	0.41875	52.1161
isiNdebele	56	12875	0.22767	52.3438
Missing	11722	24597	47.65622	100.0000

Category	Frequency table: Language Group			
	Count	Cumulative Count	Percent	Cumulative Percent
Indigenous	4145	4145	16.85165	16.8516
Afrikaans	2857	7002	11.61524	28.4669
English	5102	12104	20.74237	49.2093
Missing	12493	24597	50.79075	100.0000

Category	Frequency table: Race Group			
	Count	Cumulative Count	Percent	Cumulative Percent
African	5803	5803	23.59231	23.5923
European	5002	10805	20.33581	43.9281
Coloured	1124	11929	4.56966	48.4978
Asian	1734	13663	7.04964	55.5474
Missing	10934	24597	44.45258	100.0000

Variable	Descriptive Statistics: Age					
	Mean	Std.Dev	Minimum	Maximum	N	No.cases Missing
Age	32.80917	9.172097	2.000000	72.00000	23654	943



Descriptive statistics on 15 Factor Questionnaire Plus scales

Variable		Descriptive Statistics					
		Mean	Std.Dev	Minimum	Maximum	N	No.cases Missing
15FQ+_fA	<i>Distant aloof - empathic</i>	18.82892	3.66514	0.00	24.0000	24597	0
15FQ+_B	<i>Intellectance</i>	19.70907	4.01142	0.00	24.0000	24597	0
15FQ+_fC	<i>Affected by feelings - emotionally stable</i>	17.43631	4.60889	0.00	24.0000	24597	0
15FQ+_fE	<i>Accommodating - Dominant</i>	16.53006	4.30584	0.00	24.0000	24597	0
15FQ+_fF	<i>Sober serious - Enthusiastic</i>	14.45567	5.44309	0.00	24.0000	24597	0
15FQ+_fG	<i>Expedient - Conscientious</i>	19.53104	4.41389	0.00	24.0000	24597	0
15FQ+_fH	<i>Retiring - Socially bold</i>	15.50864	5.90297	0.00	24.0000	24597	0
15FQ+_fI	<i>Tough Minded - Tender minded</i>	14.53234	5.05418	0.00	24.0000	24597	0
15FQ+_fL	<i>Trusting - Suspicious</i>	9.41155	4.96129	0.00	24.0000	24597	0
15FQ+_fM	<i>Concrete - Abstract</i>	10.32020	3.96063	0.00	24.0000	24597	0
15FQ+_fN	<i>Direct - Restrained</i>	19.34374	4.20419	0.00	24.0000	24597	0
15FQ+_fO	<i>Self-assured - Apprehensive</i>	12.14116	5.44726	0.00	24.0000	24597	0
15FQ+_fQ1	<i>Conventional - Radical</i>	8.88657	4.80536	0.00	24.0000	24597	0
15FQ+_fQ2	<i>Group - orientated - Self-sufficient</i>	7.61422	4.89561	0.00	24.0000	24597	0
15FQ+_fQ3	<i>Informal- self disciplined</i>	20.32476	3.16704	0.00	24.0000	24597	0
15FQ+_fQ4	<i>Composed - tense driven</i>	8.83128	5.49807	0.00	24.0000	24597	0
15FQ+_SD	<i>Social desirability</i>	10.91784	3.69573	0.00	16.0000	24597	0
15FQ+_CT	<i>Central Tendency</i>	12.31455	13.95184	0.00	174.0000	24597	0
15FQ+_INF	<i>Infrequency</i>	1.43513	1.66212	0.00	22.0000	24597	0
15FQ+_EIQ	<i>Derived score: Emotional Intelligence</i>	23.77879	4.42982	0.00	30.0000	24597	0
15FQ+_WA	<i>Derived score: Work attitude</i>	27.25747	4.21610	0.00	32.0000	24597	0
15FQ+_fGOOD	<i>Faking good</i>	7.46530	2.62652	0.00	12.0000	24597	0
15FQ+_fBAD	<i>Faking bad</i>	4.37907	2.40968	0.00	13.0000	24597	0

Sten table

		S10_1	S10_2	S10_3	S10_4	S10_5	S10_6	S10_7	S10_8	S10_9	S10_10
15FQ+_fA	<i>Distant aloof - empathic</i>	0-11	12-13	14-15	16-16	17-18	19-20	21-22	23-24		
15FQ+_B	<i>Intellectance</i>	0-11	12-13	14-15	16-17	18-19	20-21	22-23	24-24		
15FQ+_fC	<i>Affected by feelings - emotionally stable</i>	0-8	9-10	11-12	13-15	16-17	18-19	20-22	23-24		
15FQ+_fE	<i>Accommodating - Dominant</i>	0-7	8-10	11-12	13-14	15-16	17-18	19-20	21-22	23-24	
15FQ+_fF	<i>Sober serious - Enthusiastic</i>	0-3	4-6	7-9	10-11	12-14	15-17	18-19	20-22	23-24	
15FQ+_fG	<i>Expedient - Conscientious</i>	0-10	11-12	13-15	16-17	18-19	20-21	22-23	24-24		
15FQ+_fH	<i>Retiring - Socially bold</i>	0-3	4-6	7-9	10-12	13-15	16-18	19-21	22-24		
15FQ+_fI	<i>Tough Minded - Tender minded</i>	0-4	5-6	7-9	10-12	13-14	15-17	18-19	20-22	23-24	
15FQ+_fL	<i>Trusting - Suspicious</i>	0--1	0-1	2-4	5-6	7-9	10-11	12-14	15-16	17-19	20-24
15FQ+_fM	<i>Concrete - Abstract</i>	0-2	3-4	5-6	7-8	9-10	11-12	13-14	15-16	17-18	19-24
15FQ+_fN	<i>Direct - Restrained</i>	0-10	11-13	14-15	16-17	18-19	20-21	22-23	24-24		
15FQ+_fO	<i>Self-assured - Apprehensive</i>	0-1	2-3	4-6	7-9	10-12	13-14	15-17	18-20	21-23	24-24
15FQ+_fQ1	<i>Conventional - Radical</i>	0--1	0-1	2-4	5-6	7-8	9-11	12-13	14-16	17-18	19-24
15FQ+_fQ2	<i>Group - orientated - Self-sufficient</i>	0--1	0-0	1-2	3-5	6-7	8-10	11-12	13-14	15-17	18-24
15FQ+_fQ3	<i>Informal- self disciplined</i>	0-13	14-15	16-17	18-18	19-20	21-21	22-23	24-24		
15FQ+_fQ4	<i>Composed - tense driven</i>	0--1	0-0	1-3	4-6	7-8	9-11	12-14	15-17	18-19	20-24
15FQ+_SD	<i>Social desirability</i>	0-3	4-5	6-7	8-9	10-10	11-12	13-14	15-16		
15FQ+_CT	<i>Central Tendency</i>	0--1	0-0	1-1	2-5	6-12	13-19	20-26	27-33	34-40	41-174
15FQ+_INF	<i>Infrequency</i>	0--1	0-0	1-1	2-2	3-3	4-4	5-5	6-6	7-7	8-22
15FQ+_EIQ	<i>Derived score: Emotional Intelligence</i>	0-14	15-17	18-19	20-21	22-23	24-25	26-28	29-30		
15FQ+_WA	<i>Derived score: Work attitude</i>	0-18	19-20	21-23	24-25	26-27	28-29	30-31	32-32		
15FQ+_fGOOD	<i>Faking good</i>	0-2	3-3	4-4	5-6	7-7	8-8	9-10	11-11	12-12	
15FQ+_fBAD	<i>Faking bad</i>	0--1	0-0	1-1	2-3	4-4	5-5	6-6	7-7	8-9	10-13