

Clerical Test Battery Norm group: South Africans, race Coloured, updated 2012

Composition of the sample

The sample consisted of South Africans, who gave their race as Coloured, tested by Psytech South Africa and collaborators in the period leading up to February 2012. Not all the respondents completed the entire Clerical Test Battery, therefore the biographical particulars are reported separately for the different subtests.

Composition of the sample: Verbal Reasoning Test

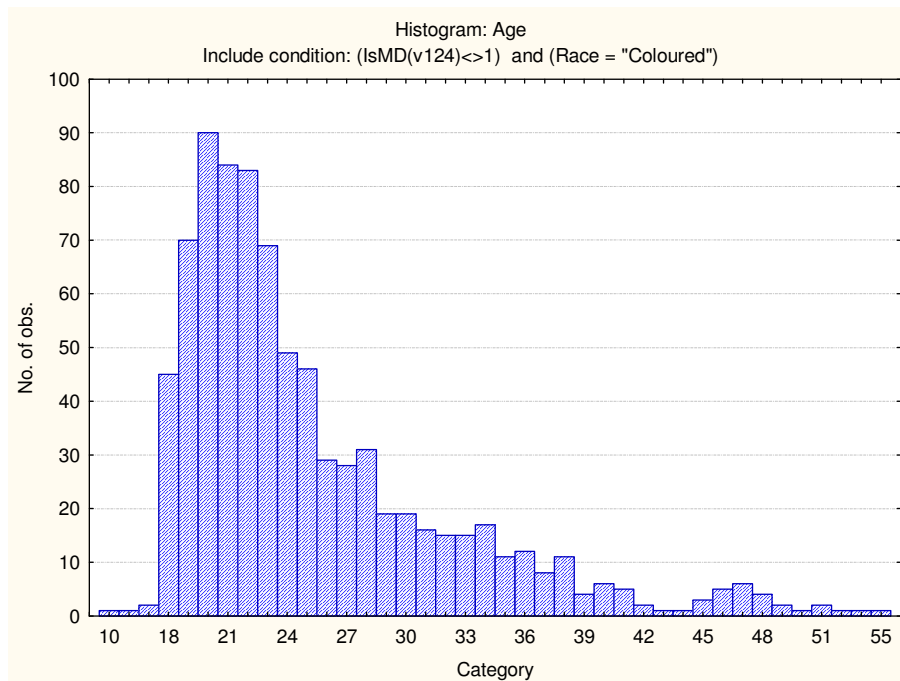
| Category | Frequency table: Sex | | | |
|----------|----------------------|------------------|----------|--------------------|
| | Count | Cumulative Count | Percent | Cumulative Percent |
| F | 512 | 512 | 61.61252 | 61.6125 |
| M | 317 | 829 | 38.14681 | 99.7593 |
| U | 2 | 831 | 0.24067 | 100.0000 |
| Missing | 0 | 831 | 0.00000 | 100.0000 |

| Category | Frequency table: Education | | | |
|-------------|----------------------------|------------------|----------|--------------------|
| | Count | Cumulative Count | Percent | Cumulative Percent |
| Grade 12 | 625 | 625 | 75.21059 | 75.2106 |
| Under Gr 12 | 62 | 687 | 7.46089 | 82.6715 |
| Degree | 28 | 715 | 3.36943 | 86.0409 |
| Certificate | 9 | 724 | 1.08303 | 87.1239 |
| Technikon | 51 | 775 | 6.13718 | 93.2611 |
| Diploma | 26 | 801 | 3.12876 | 96.3899 |
| Missing | 30 | 831 | 3.61011 | 100.0000 |

| Category | Frequency table: Language | | | |
|-----------|---------------------------|------------------|----------|--------------------|
| | Count | Cumulative Count | Percent | Cumulative Percent |
| isiZulu | 5 | 5 | 0.60168 | 0.6017 |
| Afrikaans | 401 | 406 | 48.25511 | 48.8568 |
| isiXhosa | 2 | 408 | 0.24067 | 49.0975 |
| siSwati | 1 | 409 | 0.12034 | 49.2178 |
| Sepedi | 2 | 411 | 0.24067 | 49.4585 |
| English | 397 | 808 | 47.77377 | 97.2323 |
| Missing | 23 | 831 | 2.76775 | 100.0000 |

| Category | Frequency table: Language Group | | | |
|------------|---------------------------------|------------------|----------|--------------------|
| | Count | Cumulative Count | Percent | Cumulative Percent |
| Indigenous | 10 | 10 | 1.20337 | 1.2034 |
| English | 397 | 407 | 47.77377 | 48.9771 |
| Afrikaans | 401 | 808 | 48.25511 | 97.2323 |
| Missing | 23 | 831 | 2.76775 | 100.0000 |

| Variable | Descriptive Statistics : Age | | | | | |
|----------|------------------------------|----------|----------|----------|-----|------------------|
| | Mean | Std.Dev | Minimum | Maximum | N | No.cases Missing |
| Age | 25.24877 | 6.902342 | 10.00000 | 55.00000 | 816 | 15 |



Sample composition: Numerical Ability Test

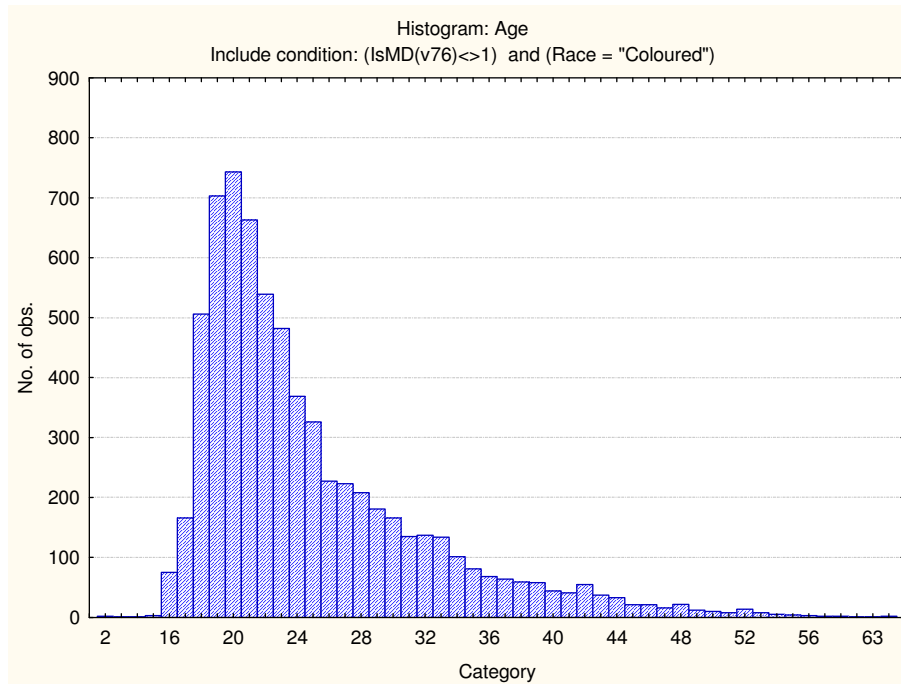
| Category | Frequency table: Sex | | | |
|----------|----------------------|------------------|----------|--------------------|
| | Count | Cumulative Count | Percent | Cumulative Percent |
| F | 4766 | 4766 | 69.97504 | 69.9750 |
| M | 2039 | 6805 | 29.93687 | 99.9119 |
| U | 6 | 6811 | 0.08809 | 100.0000 |
| Missing | 0 | 6811 | 0.00000 | 100.0000 |

| Category | Frequency table: Education | | | |
|---------------|----------------------------|------------------|----------|--------------------|
| | Count | Cumulative Count | Percent | Cumulative Percent |
| Grade 12 | 4586 | 4586 | 67.33226 | 67.3323 |
| Under Gr 12 | 1031 | 5617 | 15.13728 | 82.4695 |
| Degree | 93 | 5710 | 1.36544 | 83.8350 |
| Certificate | 228 | 5938 | 3.34753 | 87.1825 |
| Post Graduate | 34 | 5972 | 0.49919 | 87.6817 |
| Technikon | 81 | 6053 | 1.18925 | 88.8709 |
| Diploma | 256 | 6309 | 3.75863 | 92.6296 |
| Missing | 502 | 6811 | 7.37043 | 100.0000 |

| Category | Frequency table: Language | | | |
|------------|---------------------------|------------------|----------|--------------------|
| | Count | Cumulative Count | Percent | Cumulative Percent |
| isiZulu | 19 | 19 | 0.27896 | 0.2790 |
| Afrikaans | 2644 | 2663 | 38.81956 | 39.0985 |
| isiXhosa | 47 | 2710 | 0.69006 | 39.7886 |
| siSwati | 2 | 2712 | 0.02936 | 39.8179 |
| Sesotho | 4 | 2716 | 0.05873 | 39.8767 |
| Setswana | 10 | 2726 | 0.14682 | 40.0235 |
| Sepedi | 18 | 2744 | 0.26428 | 40.2878 |
| Tshivenda | 2 | 2746 | 0.02936 | 40.3171 |
| English | 3518 | 6264 | 51.65174 | 91.9689 |
| isiNdebele | 1 | 6265 | 0.01468 | 91.9836 |
| Missing | 546 | 6811 | 8.01644 | 100.0000 |

| Category | Frequency table: Language Group | | | |
|------------|---------------------------------|------------------|----------|--------------------|
| | Count | Cumulative Count | Percent | Cumulative Percent |
| Indigenous | 103 | 103 | 1.51226 | 1.5123 |
| English | 3518 | 3621 | 51.65174 | 53.1640 |
| Afrikaans | 2644 | 6265 | 38.81956 | 91.9836 |
| Missing | 546 | 6811 | 8.01644 | 100.0000 |

| Variable | Descriptive Statistics: Age | | | | | |
|----------|-----------------------------|----------|----------|----------|------|------------------|
| | Mean | Std.Dev | Minimum | Maximum | N | No.cases Missing |
| Age | 24.78992 | 7.109184 | 2.000000 | 64.00000 | 6783 | 28 |



Sample composition: Clerical Checking Test

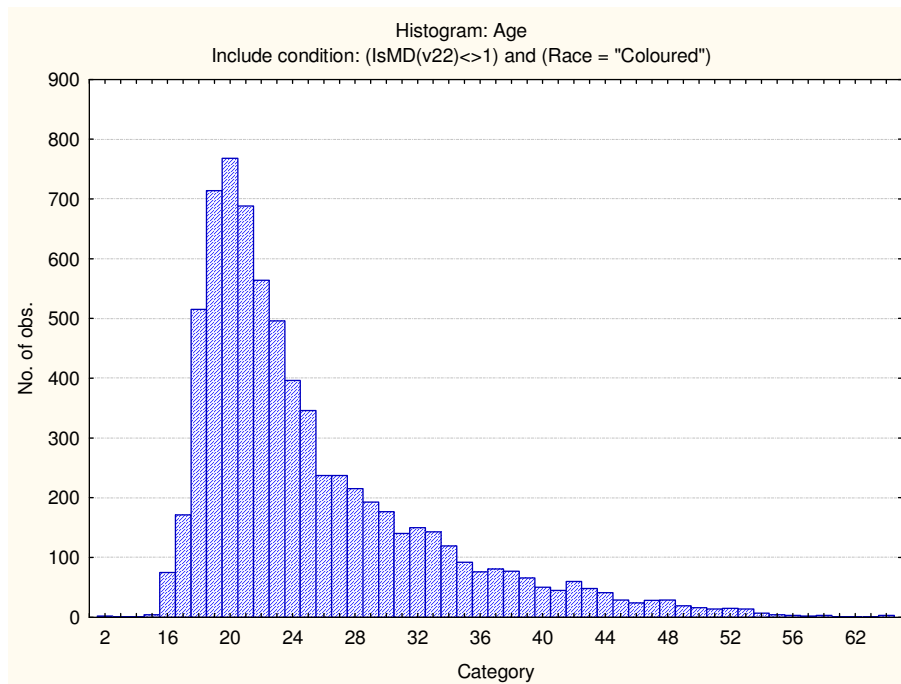
| Category | Frequency table: Sex | | | |
|----------|----------------------|------------------|----------|--------------------|
| | Count | Cumulative Count | Percent | Cumulative Percent |
| F | 4892 | 4892 | 67.63445 | 67.6345 |
| M | 2335 | 7227 | 32.28259 | 99.9170 |
| U | 6 | 7233 | 0.08295 | 100.0000 |
| Missing | 0 | 7233 | 0.00000 | 100.0000 |

| Category | Frequency table: Education | | | |
|---------------|----------------------------|------------------|----------|--------------------|
| | Count | Cumulative Count | Percent | Cumulative Percent |
| Grade 12 | 4753 | 4753 | 65.71271 | 65.7127 |
| Under Gr 12 | 1161 | 5914 | 16.05143 | 81.7641 |
| Degree | 104 | 6018 | 1.43785 | 83.2020 |
| Certificate | 236 | 6254 | 3.26282 | 86.4648 |
| Post Graduate | 36 | 6290 | 0.49772 | 86.9625 |
| Technikon | 122 | 6412 | 1.68671 | 88.6492 |
| Diploma | 275 | 6687 | 3.80202 | 92.4513 |
| Missing | 546 | 7233 | 7.54873 | 100.0000 |

| Category | Frequency table: Language | | | |
|------------|---------------------------|------------------|----------|--------------------|
| | Count | Cumulative Count | Percent | Cumulative Percent |
| isiZulu | 19 | 19 | 0.26268 | 0.2627 |
| Afrikaans | 2903 | 2922 | 40.13549 | 40.3982 |
| isiXhosa | 49 | 2971 | 0.67745 | 41.0756 |
| siSwati | 2 | 2973 | 0.02765 | 41.1033 |
| Sesotho | 5 | 2978 | 0.06913 | 41.1724 |
| Setswana | 10 | 2988 | 0.13826 | 41.3107 |
| Sepedi | 18 | 3006 | 0.24886 | 41.5595 |
| Tshivenda | 2 | 3008 | 0.02765 | 41.5872 |
| English | 3668 | 6676 | 50.71201 | 92.2992 |
| isiNdebele | 1 | 6677 | 0.01383 | 92.3130 |
| Missing | 556 | 7233 | 7.68699 | 100.0000 |

| Category | Frequency table: Language Group | | | |
|------------|---------------------------------|------------------|----------|--------------------|
| | Count | Cumulative Count | Percent | Cumulative Percent |
| Indigenous | 106 | 106 | 1.46551 | 1.4655 |
| English | 3668 | 3774 | 50.71201 | 52.1775 |
| Afrikaans | 2903 | 6677 | 40.13549 | 92.3130 |
| Missing | 556 | 7233 | 7.68699 | 100.0000 |

| Variable | Descriptive Statistics | | | | | N | No.cases Missing |
|----------|------------------------|----------|----------|----------|--|------|------------------|
| | Mean | Std.Dev | Minimum | Maximum | | | |
| Age | 25.19150 | 7.501860 | 2.000000 | 64.00000 | | 7201 | 32 |



Sample composition: Spelling test

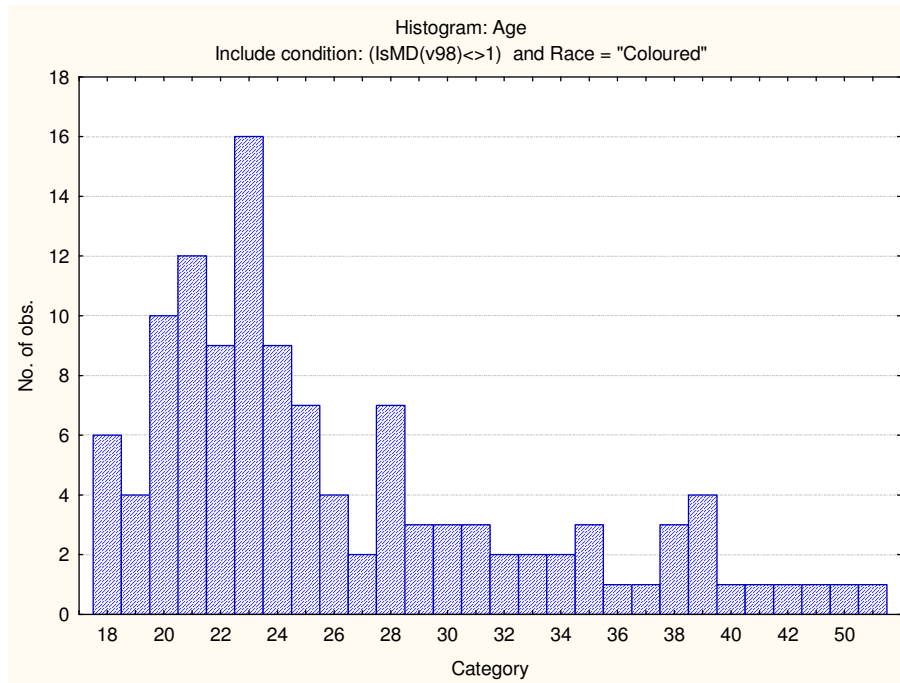
| Category | Frequency table: Sex | | | |
|----------|----------------------|------------------|----------|--------------------|
| | Count | Cumulative Count | Percent | Cumulative Percent |
| F | 71 | 71 | 58.19672 | 58.1967 |
| M | 51 | 122 | 41.80328 | 100.0000 |
| Missing | 0 | 122 | 0.00000 | 100.0000 |

| Category | Frequency table: Education | | | |
|-------------|----------------------------|------------------|----------|--------------------|
| | Count | Cumulative Count | Percent | Cumulative Percent |
| Grade 12 | 81 | 81 | 66.39344 | 66.3934 |
| Under Gr 12 | 9 | 90 | 7.37705 | 73.7705 |
| Degree | 10 | 100 | 8.19672 | 81.9672 |
| Technikon | 6 | 106 | 4.91803 | 86.8852 |
| Diploma | 11 | 117 | 9.01639 | 95.9016 |
| Missing | 5 | 122 | 4.09836 | 100.0000 |

| Category | Frequency table: Language | | | |
|-----------|---------------------------|------------------|----------|--------------------|
| | Count | Cumulative Count | Percent | Cumulative Percent |
| Afrikaans | 51 | 51 | 41.80328 | 41.8033 |
| Sepedi | 2 | 53 | 1.63934 | 43.4426 |
| English | 61 | 114 | 50.00000 | 93.4426 |
| Missing | 8 | 122 | 6.55738 | 100.0000 |

| Category | Frequency table: Language Group | | | |
|------------|---------------------------------|------------------|----------|--------------------|
| | Count | Cumulative Count | Percent | Cumulative Percent |
| Indigenous | 2 | 2 | 1.63934 | 1.6393 |
| English | 61 | 63 | 50.00000 | 51.6393 |
| Afrikaans | 51 | 114 | 41.80328 | 93.4426 |
| Missing | 8 | 122 | 6.55738 | 100.0000 |

| Variable | Descriptive Statistics: Age | | | | | |
|----------|-----------------------------|----------|----------|----------|-----|------------------|
| | Mean | Std.Dev | Minimum | Maximum | N | No.cases Missing |
| Age | 26.33613 | 7.086963 | 18.00000 | 51.00000 | 119 | 3 |

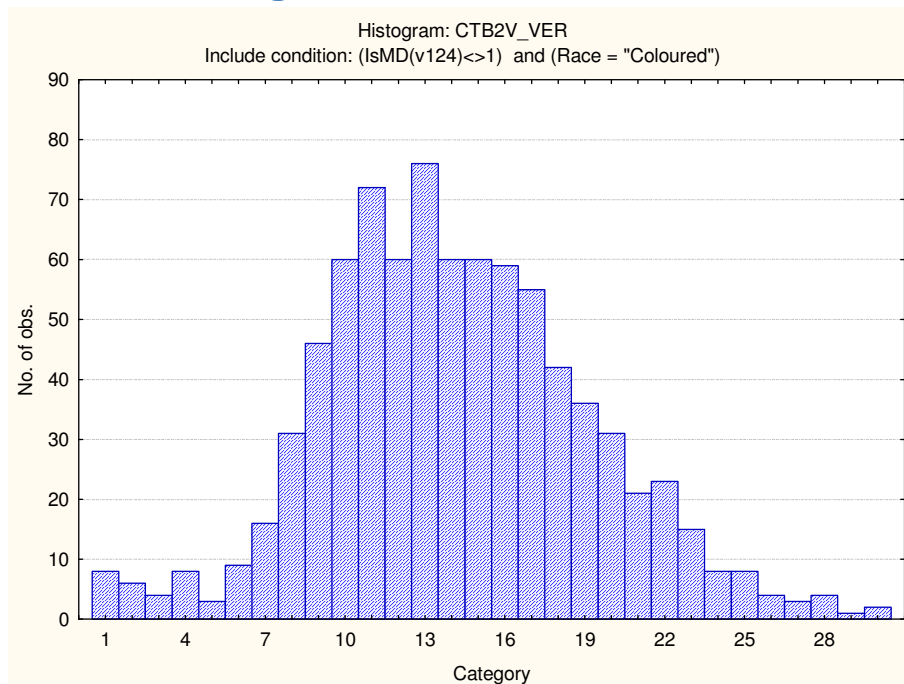


Descriptive statistics on Clerical Test Battery subtests

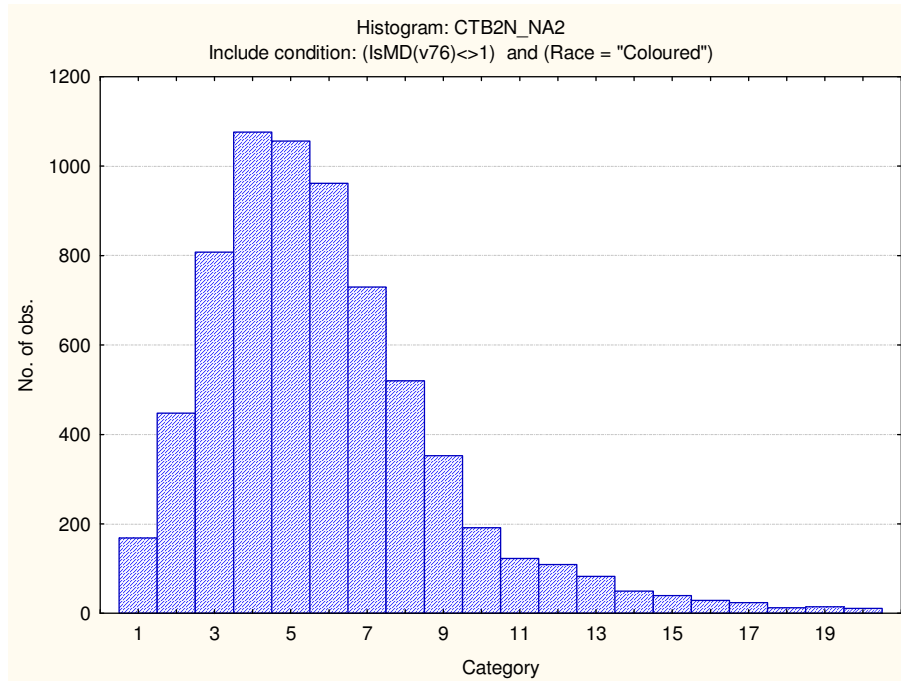
| Scale | Mean | Standard deviation | Minimum score | Maximum score | N |
|-----------------------------|----------|--------------------|---------------|---------------|------|
| Verbal Reasoning | 14.14681 | 5.011083 | 1.000000 | 30.00000 | 831 |
| Numerical Ability | 5.852738 | 3.036955 | 1.000000 | 20.00000 | 6811 |
| Clerical Checking Numerical | 9.74879 | 2.967280 | 1.000000 | 26.00000 | 7221 |
| Clerical Checking Verbal | 8.83499 | 3.040392 | 1.000000 | 26.00000 | 7224 |
| Clerical Checking Total | 18.55662 | 5.729391 | 1.000000 | 52.00000 | 7233 |
| Spelling | 26.33613 | 7.086963 | 18.00000 | 51.00000 | 119 |

Frequency distributions

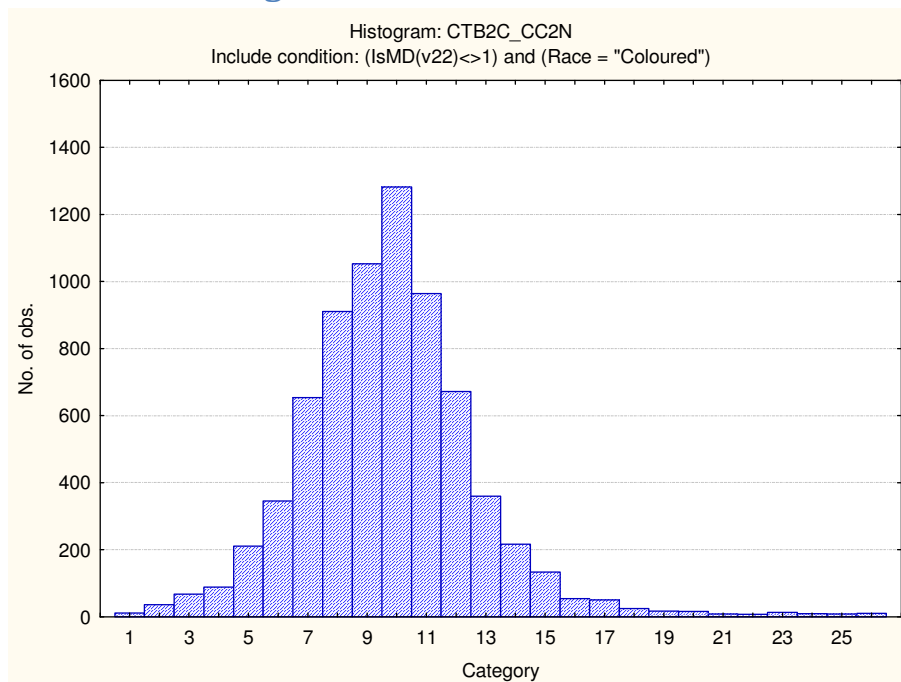
Verbal Reasoning



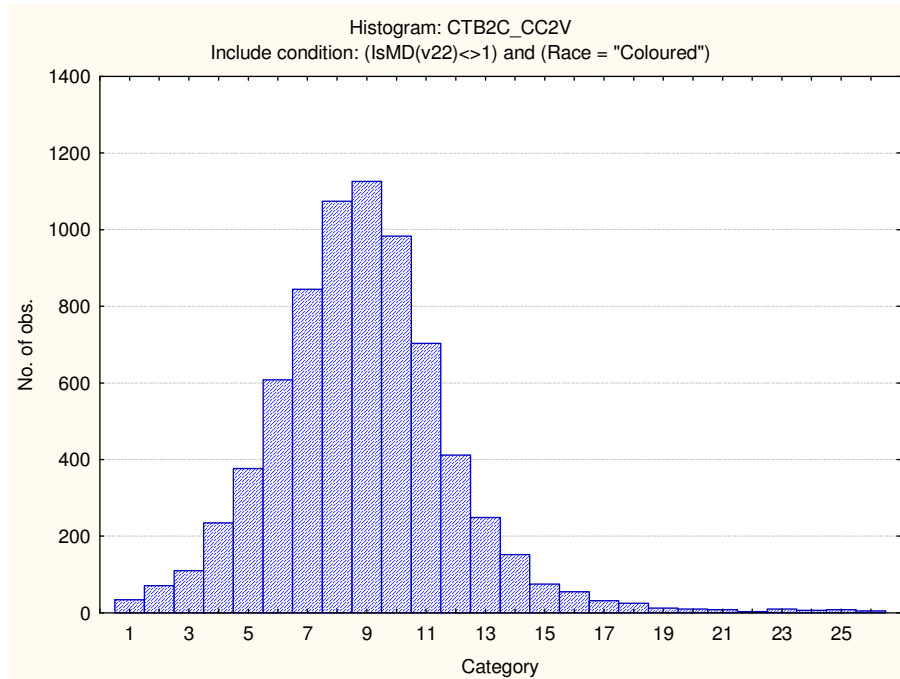
Numerical Ability



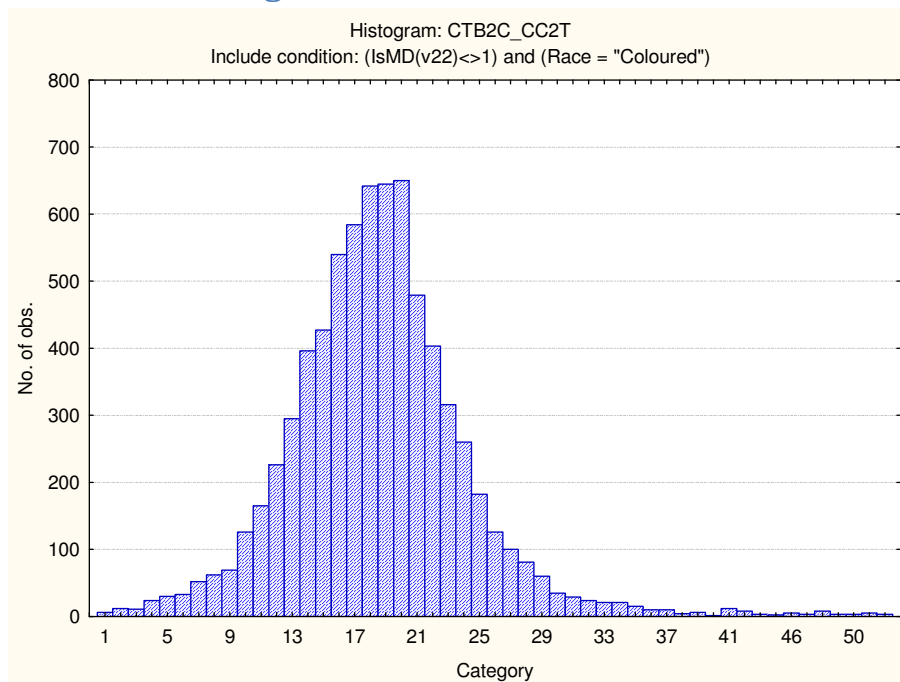
Clerical Checking Numerical



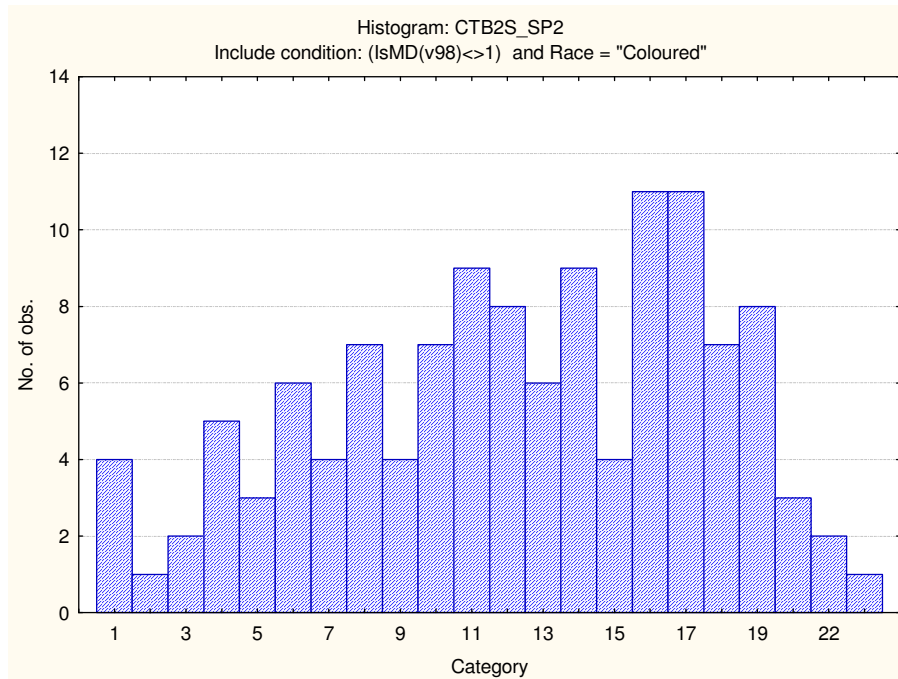
Clerical Checking Verbal



Clerical Checking Total



Spelling



Stanine table

| | S9_1 | S9_2 | S9_3 | S9_4 | S9_5 | S9_6 | S9_7 | S9_8 | S9_9 |
|--------------------------------------|-------|-------|-------|-------|-------|-------|-------|-------|-------|
| Verbal Reasoning | 1-5 | 6-7 | 8-10 | 11-12 | 13-15 | 16-17 | 18-20 | 21-22 | 23-30 |
| Numerical Ability | 1-0 | 1-2 | 3-3 | 4-5 | 6-6 | 7-8 | 9-9 | 10-11 | 12-20 |
| Clerical Checking - Numerical | 1-4 | 5-6 | 7-7 | 8-9 | 10-10 | 11-11 | 12-13 | 14-14 | 15-26 |
| Clerical Checking - Verbal | 1-3 | 4-5 | 6-6 | 7-8 | 9-9 | 10-11 | 12-12 | 13-14 | 15-26 |
| Clerical Checking - Total | 1-8 | 9-11 | 12-14 | 15-17 | 18-19 | 20-22 | 23-25 | 26-28 | 29-52 |
| Spelling | 18-17 | 18-18 | 19-21 | 22-24 | 25-28 | 29-31 | 32-35 | 36-38 | 39-51 |