

Clerical Test Battery Norm Group: SA English speakers, updated 2012

Composition of the sample

The sample consisted of South Africans who declared their home language to be English, tested on the Clerical Test Battery by Psytech South African and collaborators during the period leading up to February 2012. Not all respondents completed the entire Clerical Test Battery, therefore the biographical particulars are reported separately for the different subtests.

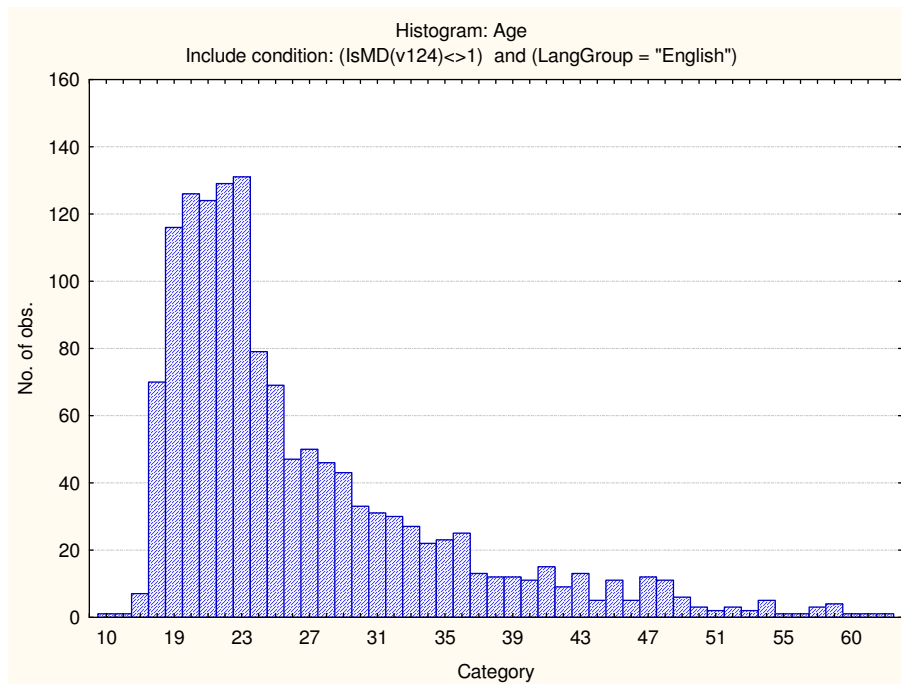
Composition of the sample: Verbal Reasoning Test

Category	Frequency table: Sex			
	Count	Cumulative Count	Percent	Cumulative Percent
F	842	842	59.00491	59.0049
M	577	1419	40.43448	99.4394
U	8	1427	0.56062	100.0000
Missing	0	1427	0.00000	100.0000

Category	Frequency table: Education			
	Count	Cumulative Count	Percent	Cumulative Percent
Grade 12	998	998	69.93693	69.9369
Under Gr 12	80	1078	5.60617	75.5431
Degree	113	1191	7.91871	83.4618
Certificate	7	1198	0.49054	83.9523
Post Graduate	19	1217	1.33146	85.2838
Technikon	78	1295	5.46601	90.7498
Diploma	57	1352	3.99439	94.7442
Missing	75	1427	5.25578	100.0000

Category	Frequency table: Race			
	Count	Cumulative Count	Percent	Cumulative Percent
Coloured	397	397	27.82060	27.8206
European	337	734	23.61598	51.4366
Asian	581	1315	40.71479	92.1514
African	84	1399	5.88648	98.0378
Missing	28	1427	1.96216	100.0000

Variable	Descriptive Statistics: Age					N	No.cases Missing
	Mean	Std.Dev	Minimum	Maximum			
Age	26.42170	8.199063	10.00000	65.00000		1392	35



Composition of the sample: Numerical Ability Test

Category	Frequency table: Sex			
	Count	Cumulative Count	Percent	Cumulative Percent
F	842	842	59.00491	59.0049
M	577	1419	40.43448	99.4394
U	8	1427	0.56062	100.0000
Missing	0	1427	0.00000	100.0000

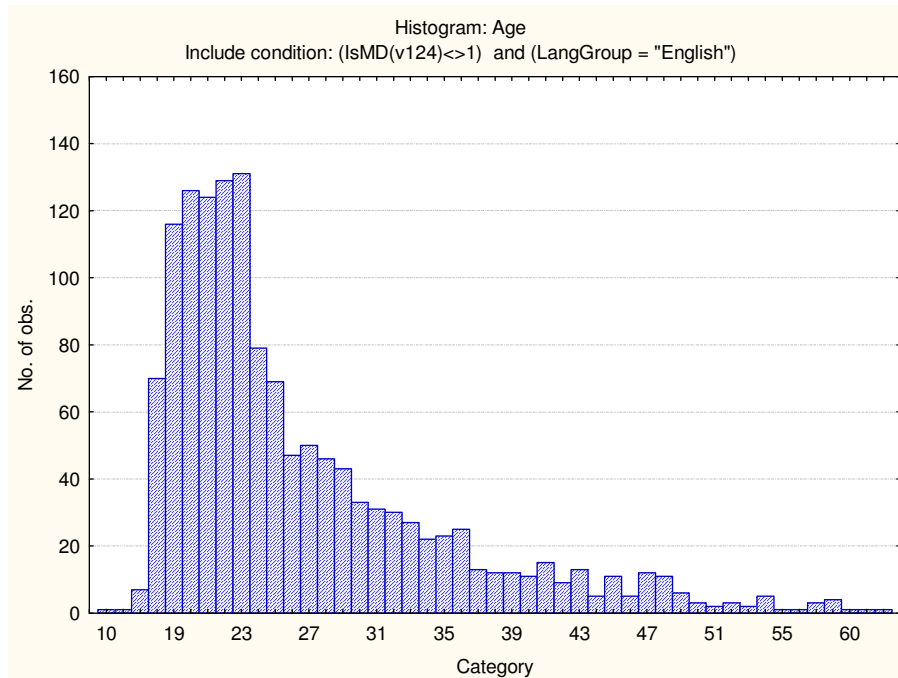
Category	Frequency table: Education			
	Count	Cumulative Count	Percent	Cumulative Percent
Grade 12	998	998	69.93693	69.9369
Under Gr 12	80	1078	5.60617	75.5431
Degree	113	1191	7.91871	83.4618
Certificate	7	1198	0.49054	83.9523
Post Graduate	19	1217	1.33146	85.2838
Technikon	78	1295	5.46601	90.7498
Diploma	57	1352	3.99439	94.7442
Missing	75	1427	5.25578	100.0000

Category	Frequency table: Language			
	Count	Cumulative Count	Percent	Cumulative Percent
English	1427	1427	100.0000	100.0000
Missing	0	1427	0.0000	100.0000

Category	Frequency table: Language Group			
	Count	Cumulative Count	Percent	Cumulative Percent
English	1427	1427	100.0000	100.0000
Missing	0	1427	0.0000	100.0000

Category	Frequency table: Race			
	Count	Cumulative Count	Percent	Cumulative Percent
Coloured	397	397	27.82060	27.8206
European	337	734	23.61598	51.4366
Asian	581	1315	40.71479	92.1514
African	84	1399	5.88648	98.0378
Missing	28	1427	1.96216	100.0000

Variable	Descriptive Statistics : Age					N	No.cases Missing
	Mean	Std.Dev	Minimum	Maximum			
Age	26.42170	8.199063	10.00000	65.00000		1392	35



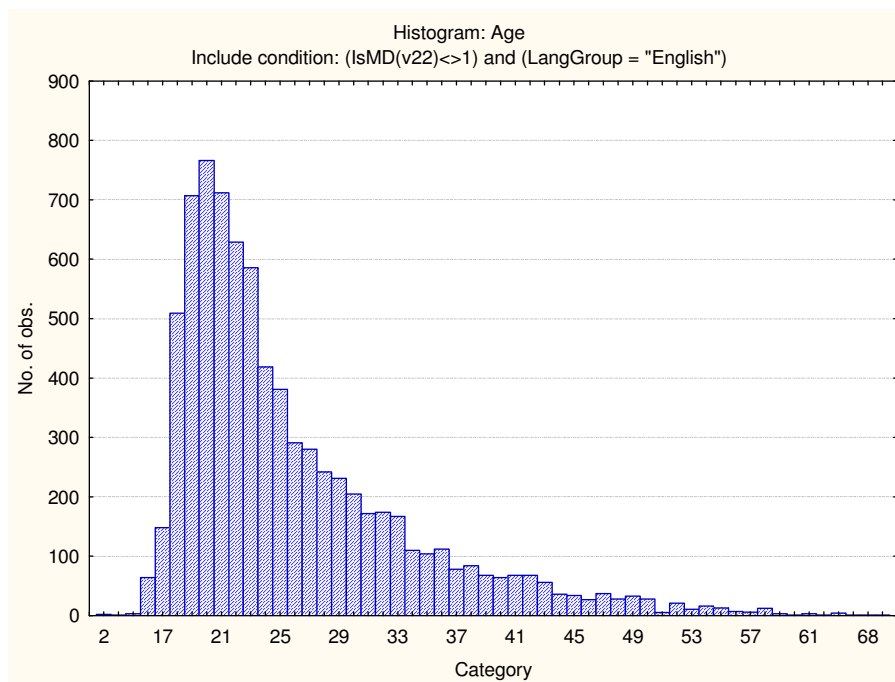
Composition of the sample: Clerical Checking Test

Category	Frequency table: Sex			
	Count	Cumulative Count	Percent	Cumulative Percent
F	5218	5218	66.12597	66.1260
M	2658	7876	33.68394	99.8099
U	15	7891	0.19009	100.0000
Missing	0	7891	0.00000	100.0000

Category	Frequency table: Education			
	Count	Cumulative Count	Percent	Cumulative Percent
Grade 12	5464	5464	69.24344	69.2434
Under Gr 12	811	6275	10.27753	79.5210
Degree	297	6572	3.76378	83.2848
Certificate	171	6743	2.16703	85.4518
Post Graduate	107	6850	1.35598	86.8078
Technikon	197	7047	2.49652	89.3043
Diploma	597	7644	7.56558	96.8699
Missing	247	7891	3.13015	100.0000

Category	Frequency table: Race			
	Count	Cumulative Count	Percent	Cumulative Percent
Coloured	3668	3668	46.48334	46.4833
European	806	4474	10.21417	56.6975
Asian	3000	7474	38.01800	94.7155
African	348	7822	4.41009	99.1256
Missing	69	7891	0.87441	100.0000

Variable	Descriptive Statistics					
	Mean	Std.Dev	Minimum	Maximum	N	No.cases Missing
Age	25.74943	7.896414	2.000000	73.00000	7830	61



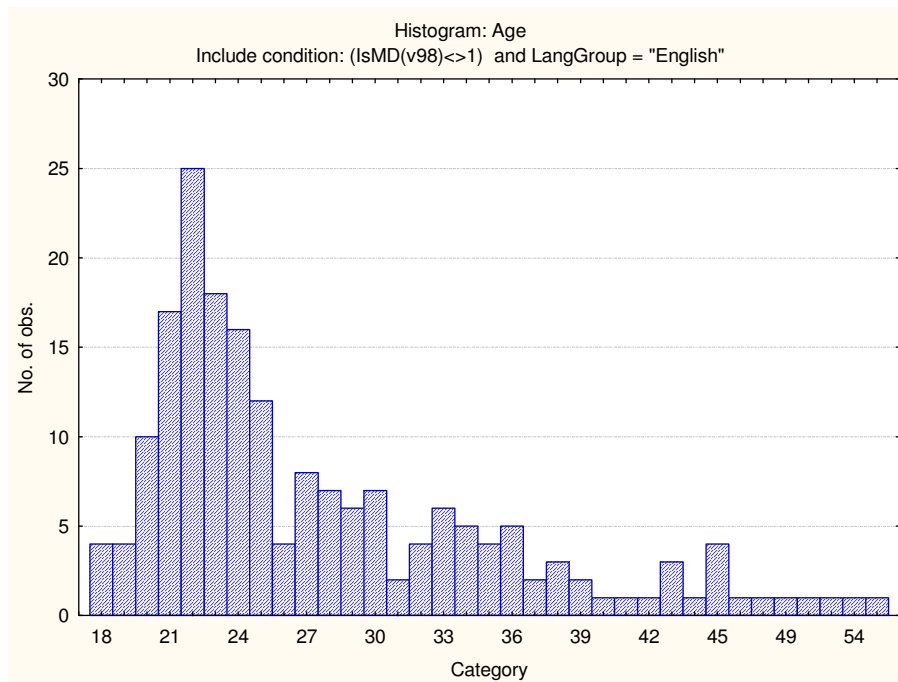
Composition of the sample: Spelling test

Category	Frequency table: Sex			
	Count	Cumulative Count	Percent	Cumulative Percent
F	117	117	60.30928	60.3093
M	75	192	38.65979	98.9691
U	2	194	1.03093	100.0000
Missing	0	194	0.00000	100.0000

Category	Frequency table: Education			
	Count	Cumulative Count	Percent	Cumulative Percent
Grade 12	106	106	54.63918	54.6392
Under Gr 12	12	118	6.18557	60.8247
Degree	21	139	10.82474	71.6495
Certificate	2	141	1.03093	72.6804
Post Graduate	4	145	2.06186	74.7423
Technikon	14	159	7.21649	81.9588
Diploma	22	181	11.34021	93.2990
Missing	13	194	6.70103	100.0000

Category	Frequency table: Race			
	Count	Cumulative Count	Percent	Cumulative Percent
Coloured	61	61	31.44330	31.4433
European	50	111	25.77320	57.2165
Asian	53	164	27.31959	84.5361
African	23	187	11.85567	96.3918
Missing	7	194	3.60825	100.0000

Variable	Descriptive Statistics: Age					
	Mean	Std.Dev	Minimum	Maximum	N	No.cases Missing
Age	27.67725	7.994450	18.00000	58.00000	189	5

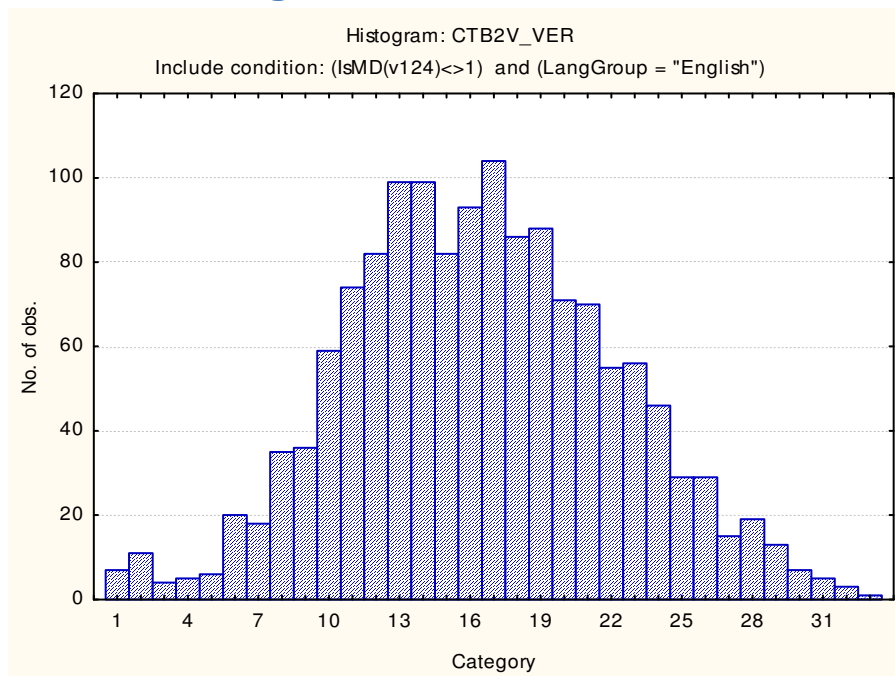


Descriptive statistics on Clerical Test Battery subtests

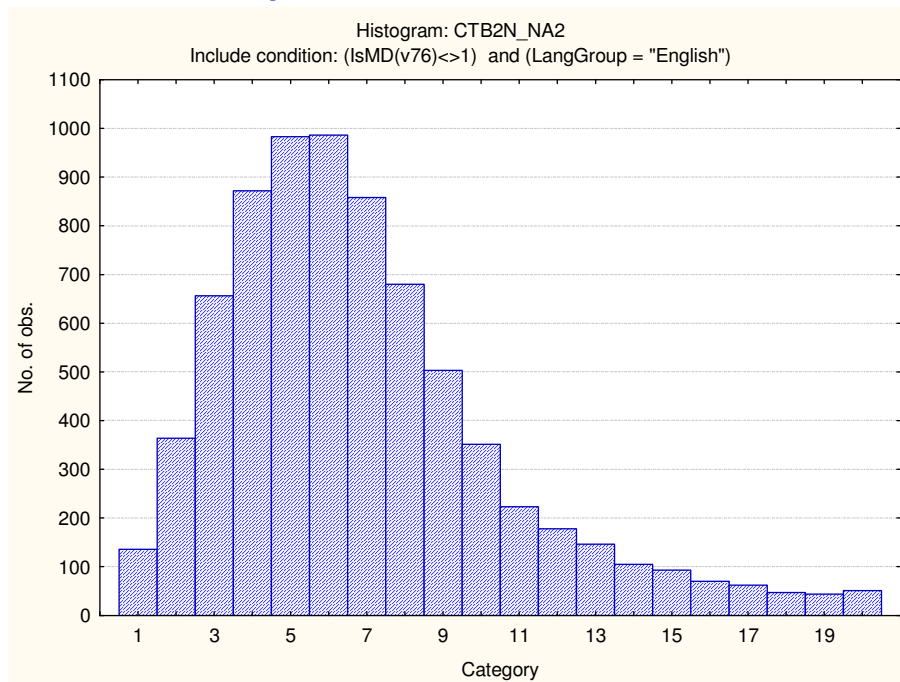
Scale	Mean	Standard deviation	Minimum score	Maximum score	N
Verbal Reasoning	16.45971	5.743979	1.000000	34.00000	1427
Numerical Ability	6.865821	3.671737	1.000000	20.00000	7408
Clerical Checking Numerical	10.31080	3.396502	1.000000	26.00000	7883
Clerical Checking Verbal	9.59962	3.443261	1.000000	26.00000	7880
Clerical Checking Total	19.88658	6.611868	1.000000	52.00000	7891
Spelling	14.76804	5.215840	1.000000	24.00000	194

Frequency distributions

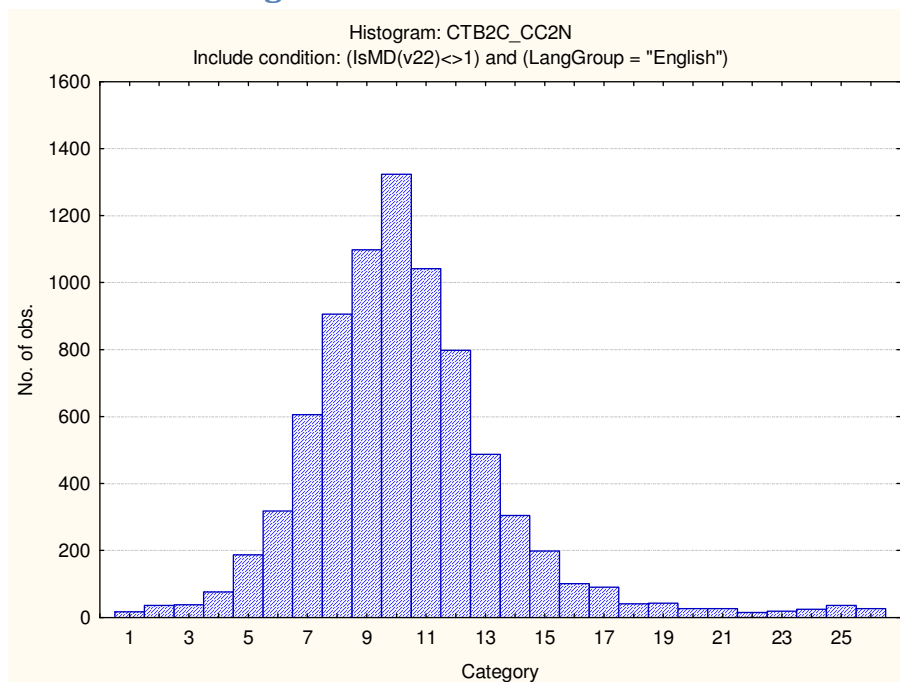
Verbal Reasoning



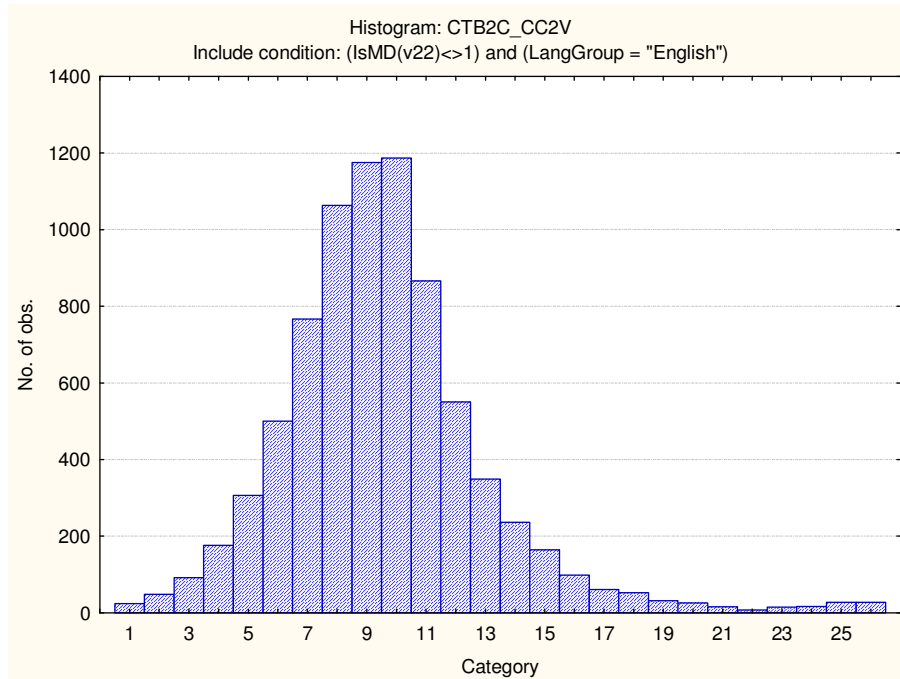
Numerical Ability



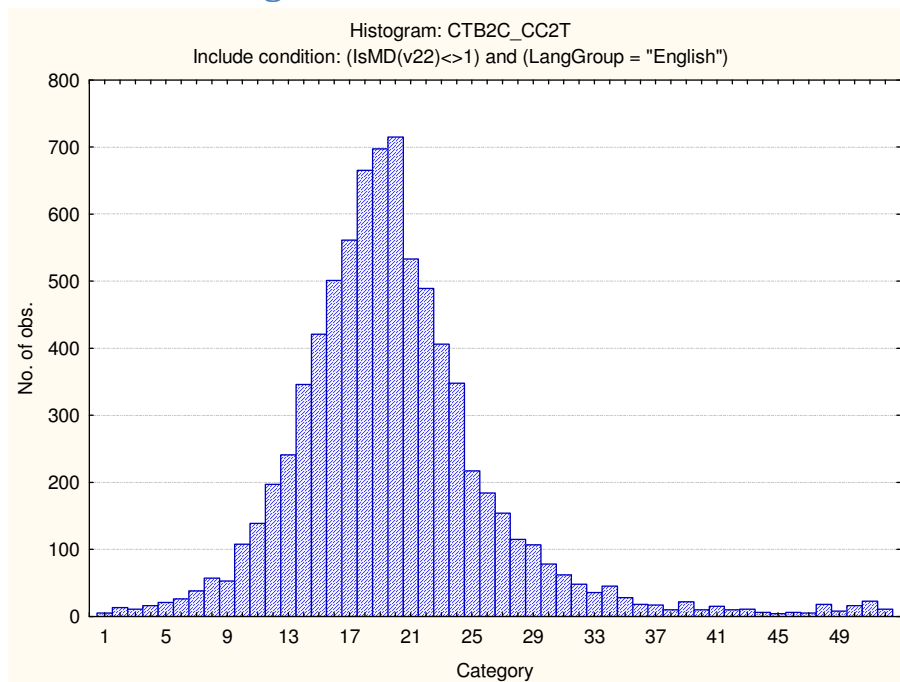
Clerical Checking Numerical



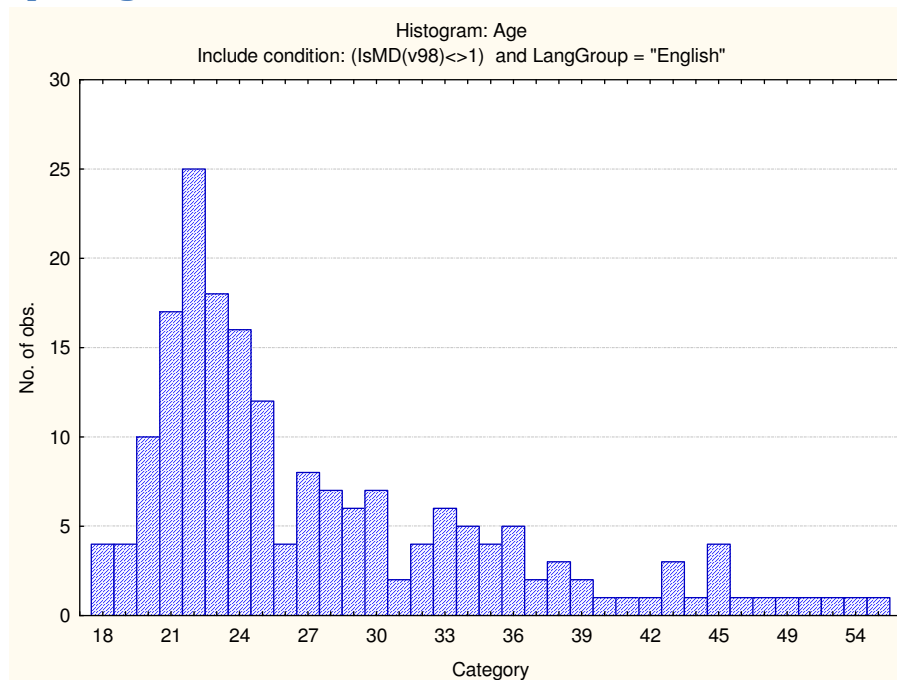
Clerical Checking Verbal



Clerical Checking Total



Spelling



Stanine table

	S9_1	S9_2	S9_3	S9_4	S9_5	S9_6	S9_7	S9_8	S9_9
Verbal Reasoning	1-6	7-9	10-12	13-15	16-17	18-20	21-23	24-26	27-34
Numerical Ability	1-0	1-2	3-4	5-5	6-7	8-9	10-11	12-13	14-20
Clerical Checking - Numerical	1-4	5-6	7-7	8-9	10-11	12-12	13-14	15-16	17-26
Clerical Checking - Verbal	1-3	4-5	6-7	8-8	9-10	11-12	13-13	14-15	16-26
Clerical Checking - Total	1-8	9-11	12-14	15-18	19-21	22-24	25-28	29-31	32-52
Spelling	1-5	6-8	9-10	11-13	14-16	17-18	19-21	22-23	24-24