

Occupational Personality Profile Norm group: SA General Population updated 2010

Sample composition

The sample consisted of 60663 South Africans tested by Psytech SA and its collaborators in the period up to January 2010.

Gender composition of the sample

Category	Frequency table: Sex			
	Count	Cumulative Count	Percent	Cumulative Percent
F	35386	35386	58.33210	58.3321
M	25064	60450	41.31678	99.6489
U	213	60663	0.35112	100.0000
Missing	0	60663	0.00000	100.0000

Educational composition of the sample

Category	Frequency table: Educational group			
	Count	Cumulative Count	Percent	Cumulative Percent
<Grade 12	3746	3746	6.17510	6.1751
Grade 12	23774	27520	39.19028	45.3654
Diploma	1833	29353	3.02161	48.3870
Degree	1549	30902	2.55345	50.9404
Post Graduate	967	31869	1.59405	52.5345
Missing	28794	60663	47.46551	100.0000

Language composition of the sample

Category	Frequency table: Language			
	Count	Cumulative Count	Percent	Cumulative Percent
isiZulu	8055	8055	13.27828	13.2783
English	9167	17222	15.11135	28.3896
isiXhosa	4974	22196	8.19940	36.5890
Afrikaans	4919	27115	8.10873	44.6978
Sesotho	3348	30463	5.51901	50.2168
Siswati	588	31051	0.96929	51.1861
Setswana	3754	34805	6.18829	57.3743

Category	Frequency table: Language			
	Count	Cumulative Count	Percent	Cumulative Percent
Sepedi	2446	37251	4.03211	61.4065
Xitsonga	757	38008	1.24788	62.6543
Tshivenda	605	38613	0.99731	63.6516
isiNdebele	274	38887	0.45168	64.1033
isNdebele	9	38896	0.01484	64.1182
Missing	21767	60663	35.88184	100.0000

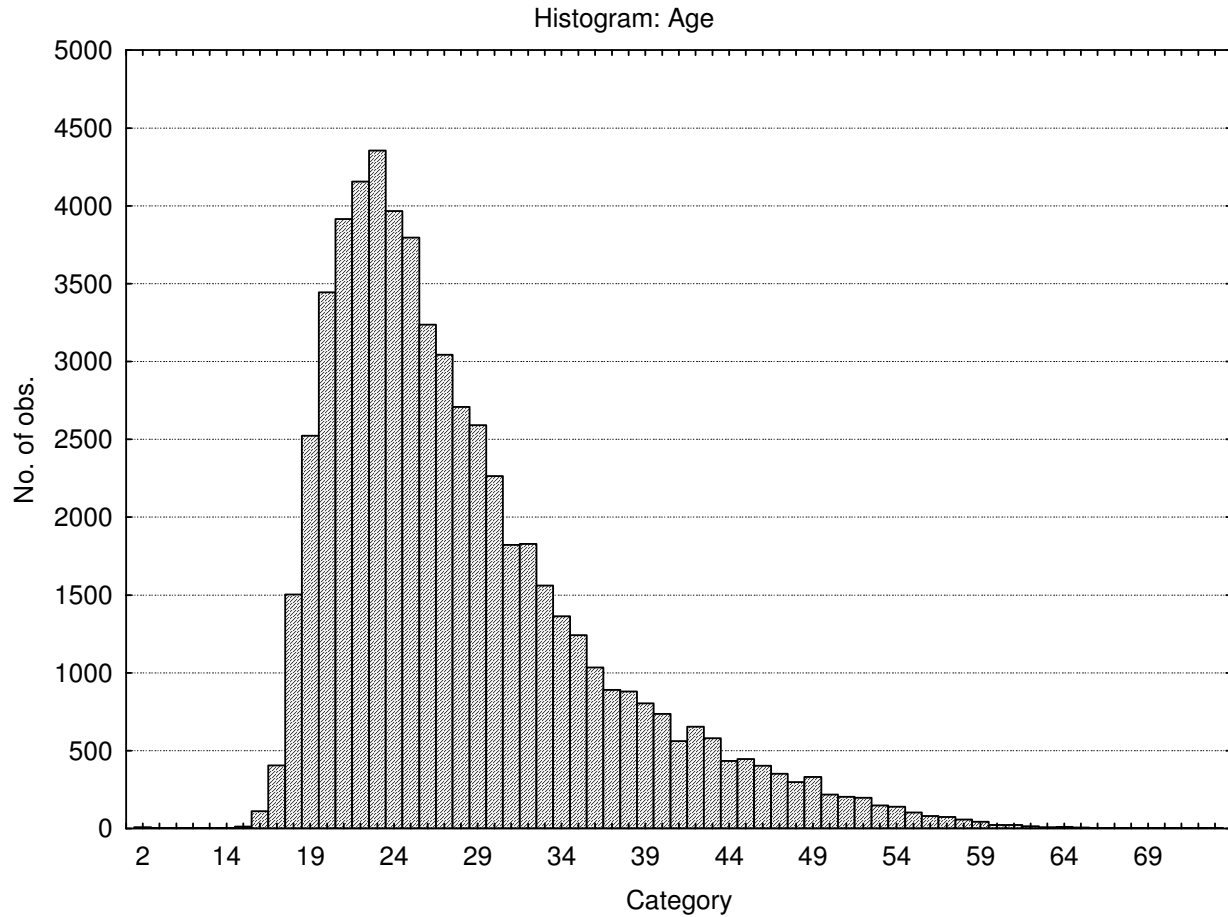
Category	Frequency table: Language group			
	Count	Cumulative Count	Percent	Cumulative Percent
Indigenous	21047	21047	34.69495	34.6950
English	9167	30214	15.11135	49.8063
Afrikaans	4919	35133	8.10873	57.9150
Missing	25530	60663	42.08496	100.0000

Racial composition of the sample

Category	Frequency table: Race			
	Count	Cumulative Count	Percent	Cumulative Percent
African	26174	26174	43.14656	43.1466
European	2850	29024	4.69809	47.8446
Coloured	8097	37121	13.34751	61.1922
Asian	3553	40674	5.85695	67.0491
Missing	19989	60663	32.95089	100.0000

Age composition of the sample

Variable	Descriptive Statistics					
	Mean	Std.Dev	Minimum	Maximum	N	No.cases Missing
Age	28.10782	8.075292	2.000000	99.00000	59625	1038

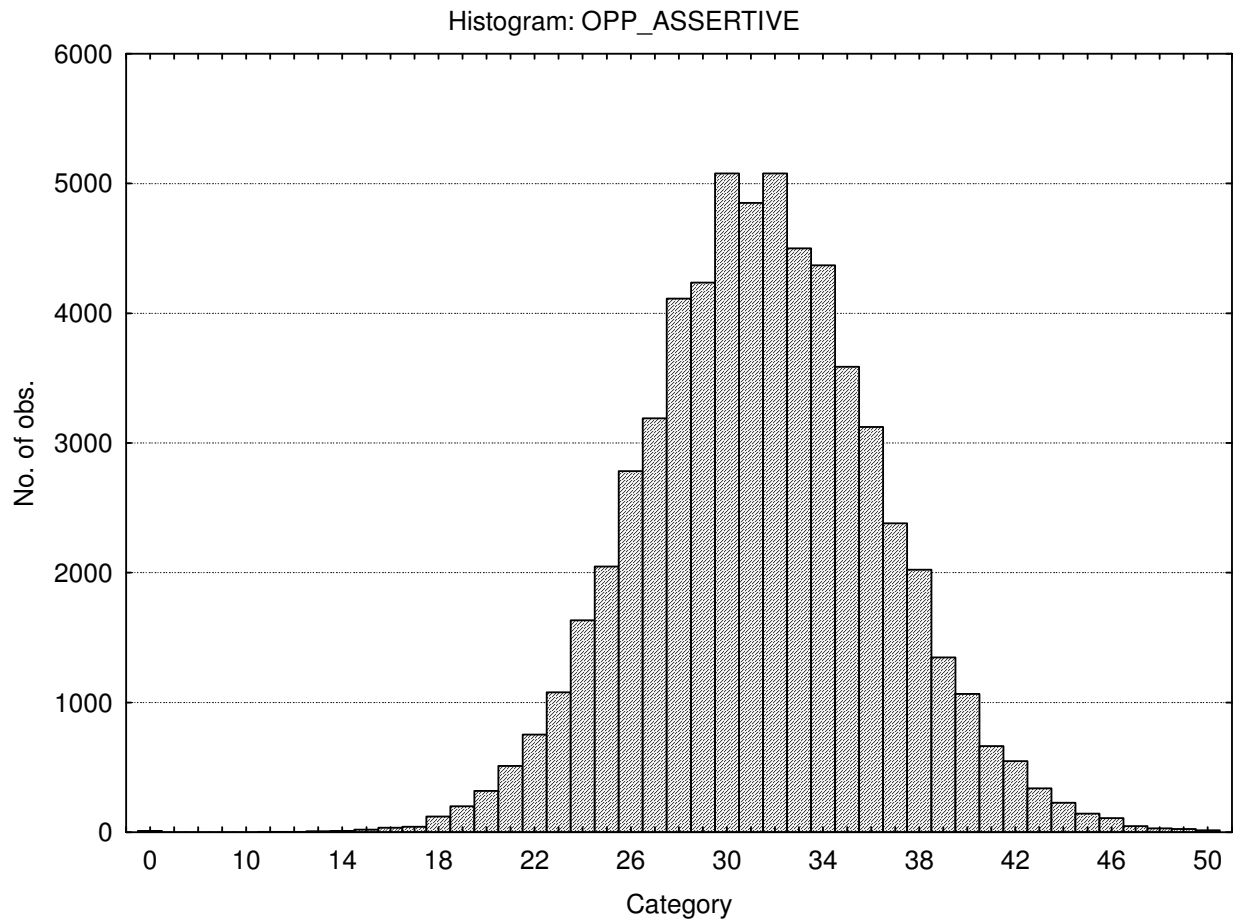


Descriptive statistics on OPPro raw scores

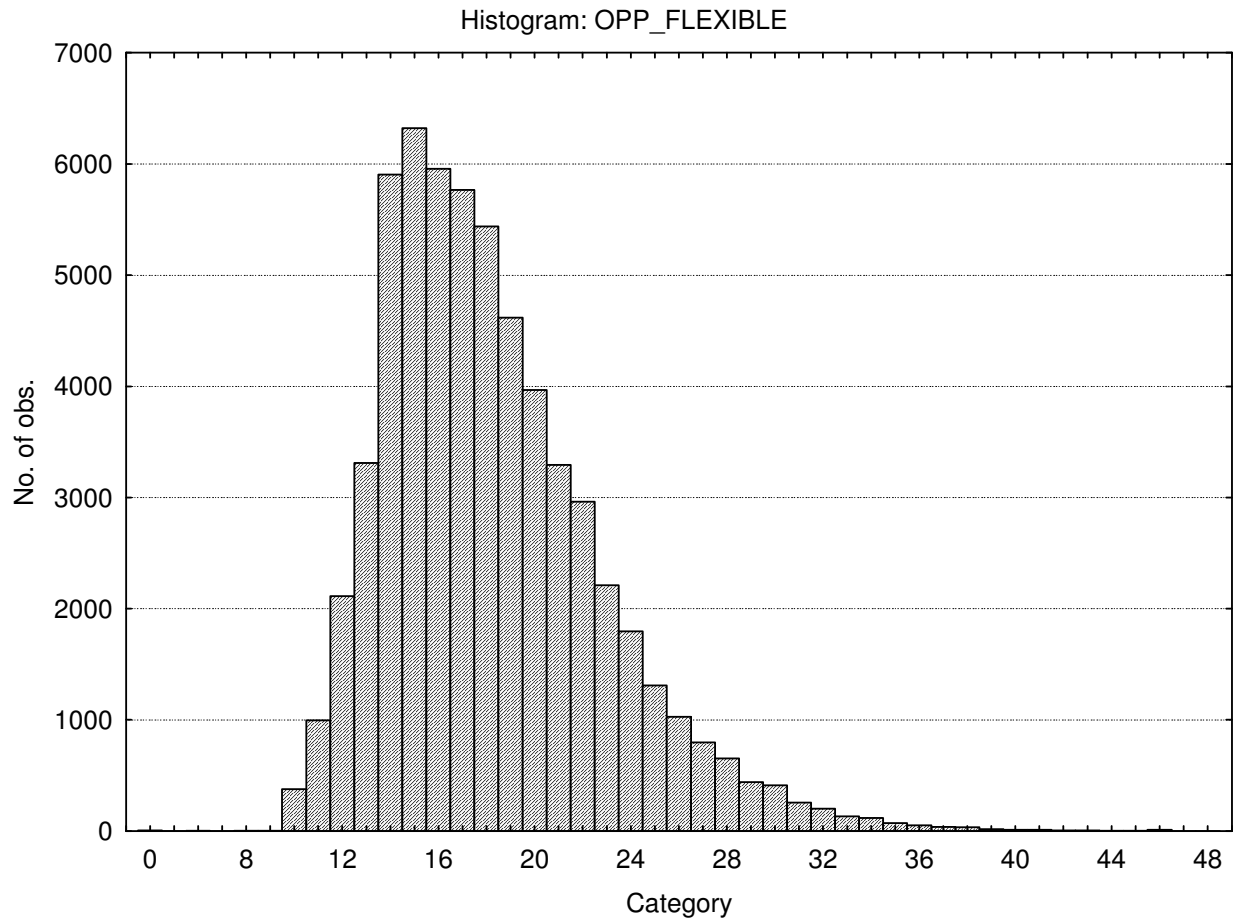
Variable	Descriptive Statistics				
	Mean	Std.Dev	Minimum	Maximum	N
Assertive	31.40732	4.96013	0.00	50.0000	60663
Flexible	18.20719	4.54527	0.00	48.0000	60663
Trusting	33.11745	6.55512	0.00	55.0000	60663
Phlegmatic	37.98002	6.91006	0.00	60.0000	60663
Gregarious	34.07891	5.84645	0.00	50.0000	60663
Persuasive	26.61349	5.38164	0.00	45.0000	60663
Contesting	30.94967	6.01581	0.00	50.0000	60663
Pessimistic	23.66693	5.91972	0.00	40.0000	60663
Pragmatic	28.55673	5.03901	0.00	49.0000	60663
Conforming	24.79543	4.51235	0.00	40.0000	60663
Central tendency	77.97082	21.43922	0.00	196.0000	60663

Frequency distributions of the Occupational Personality Profile scales

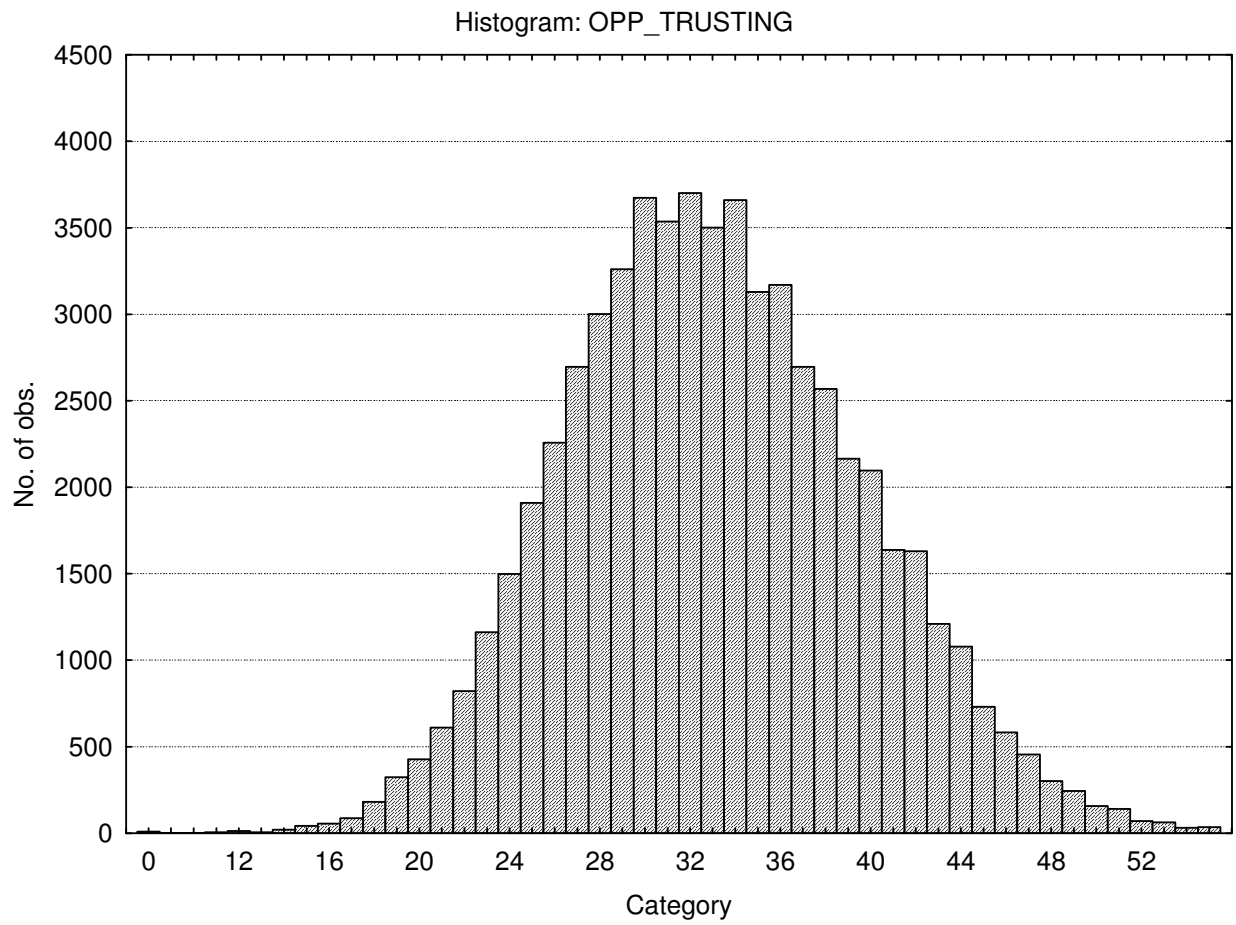
Accommodating - Assertive



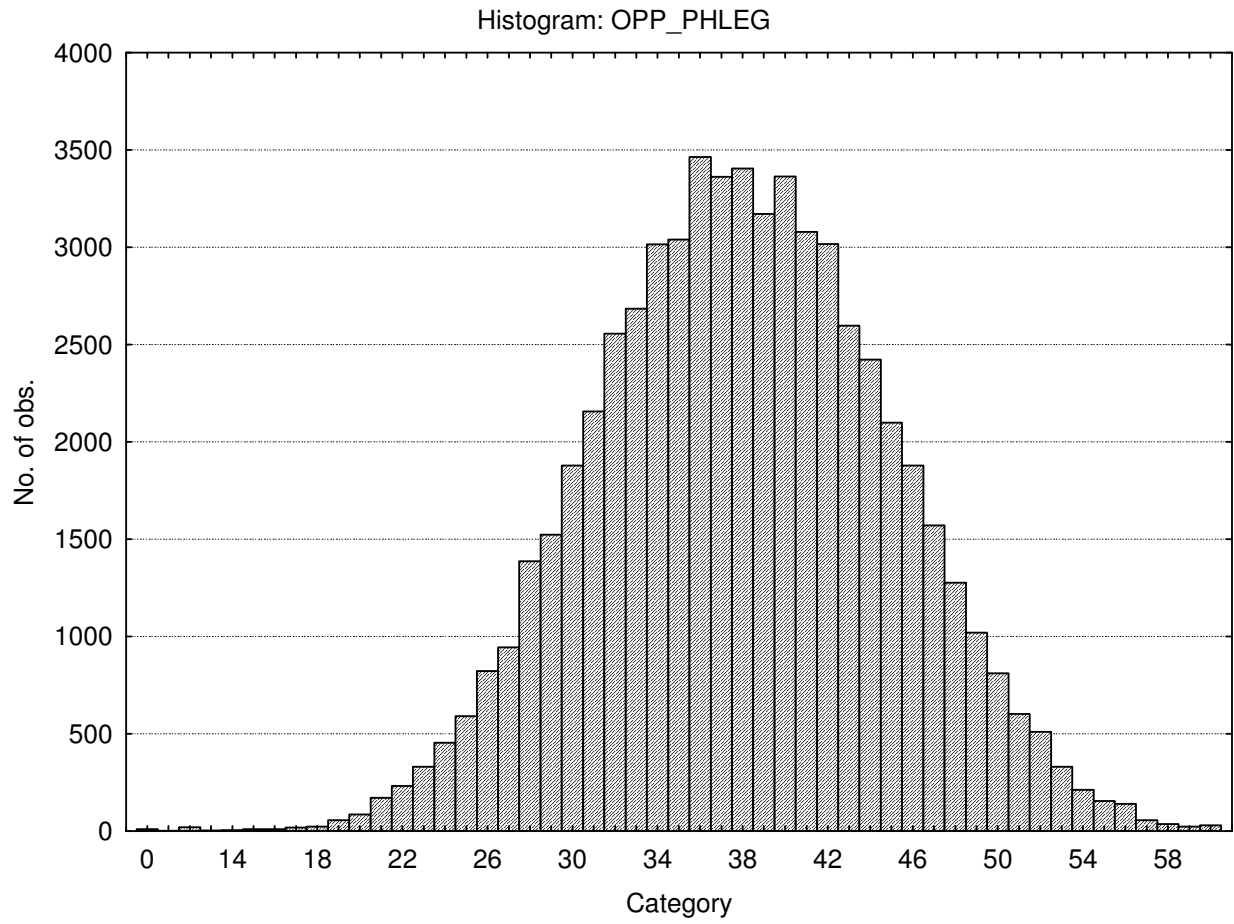
Detail conscious - Flexible



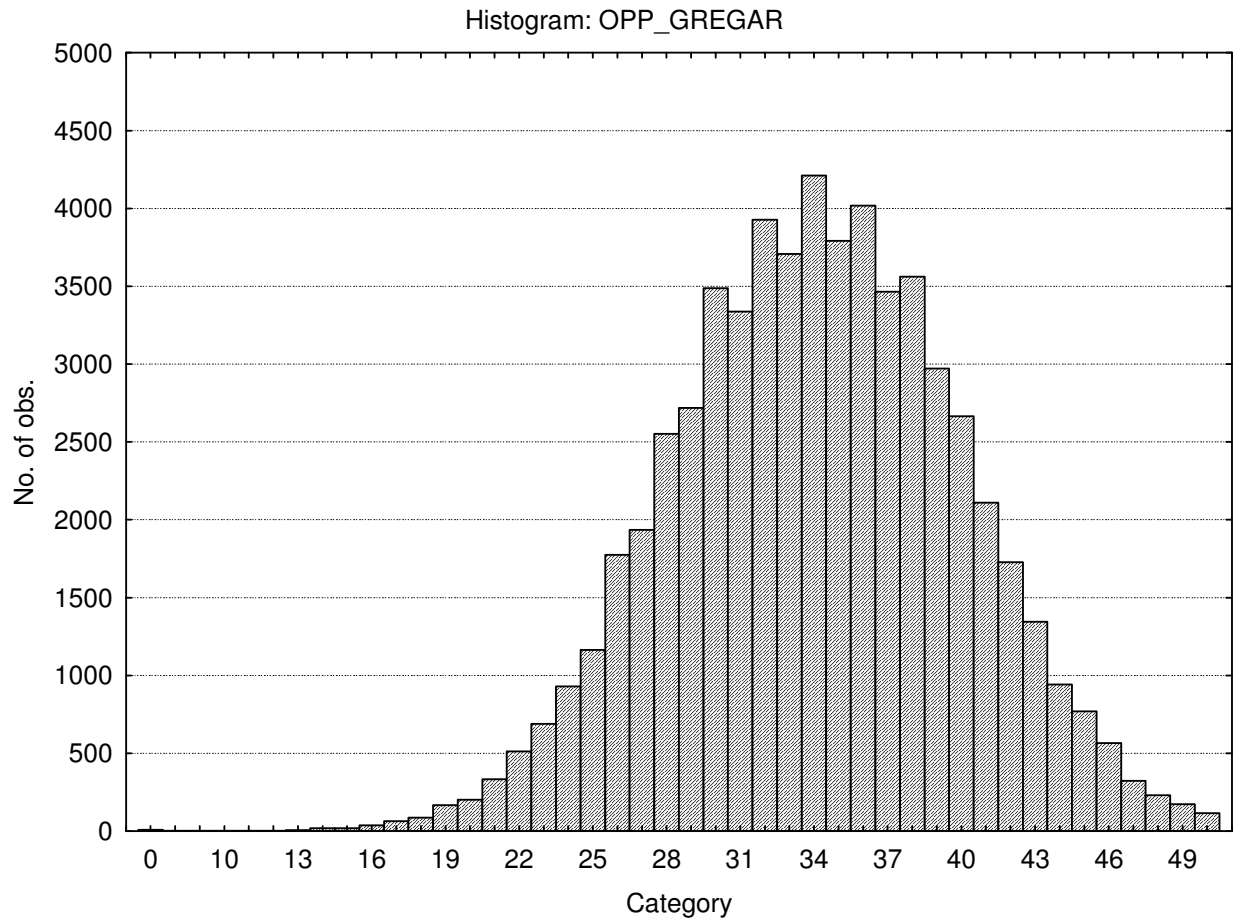
Cynical - Trusting



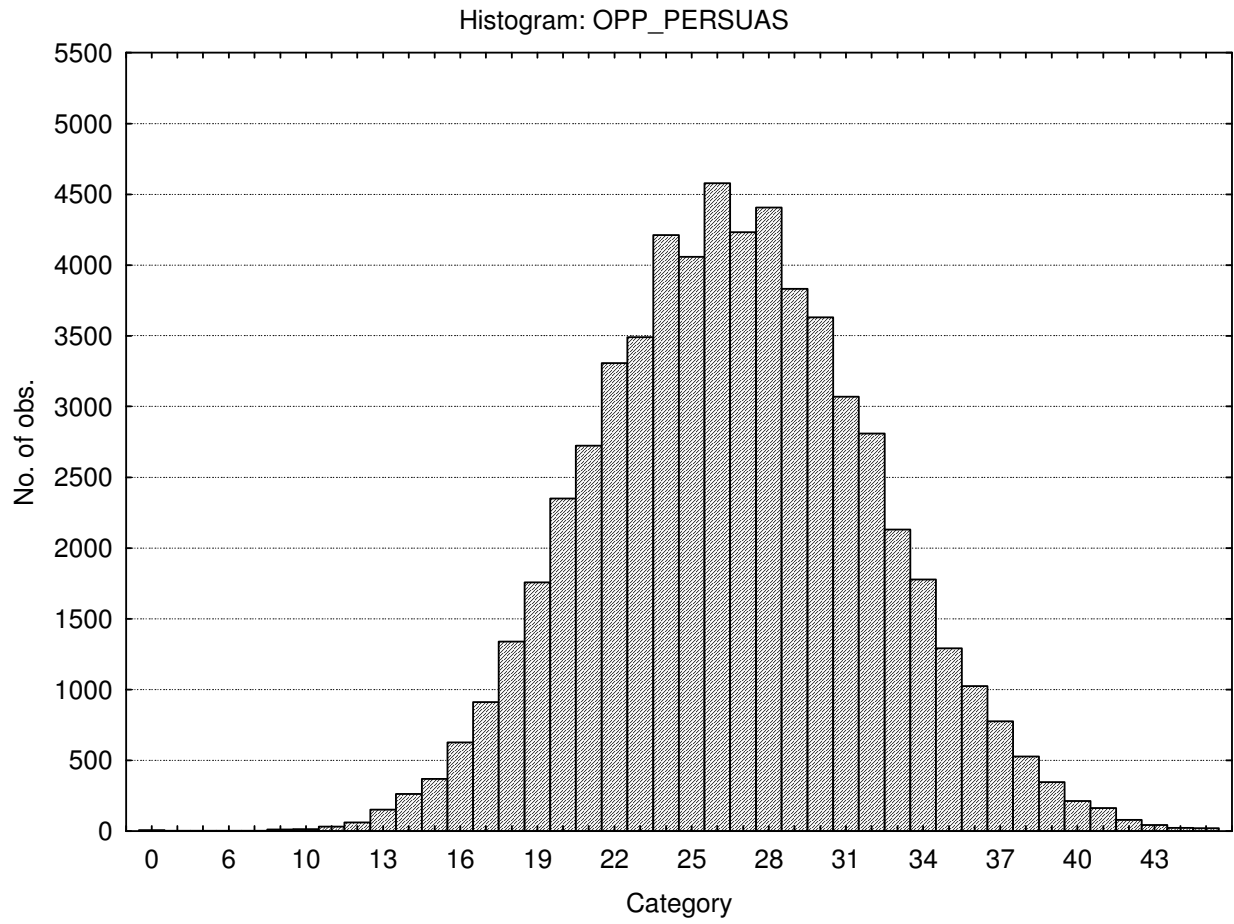
Emotional - Phlegmatic



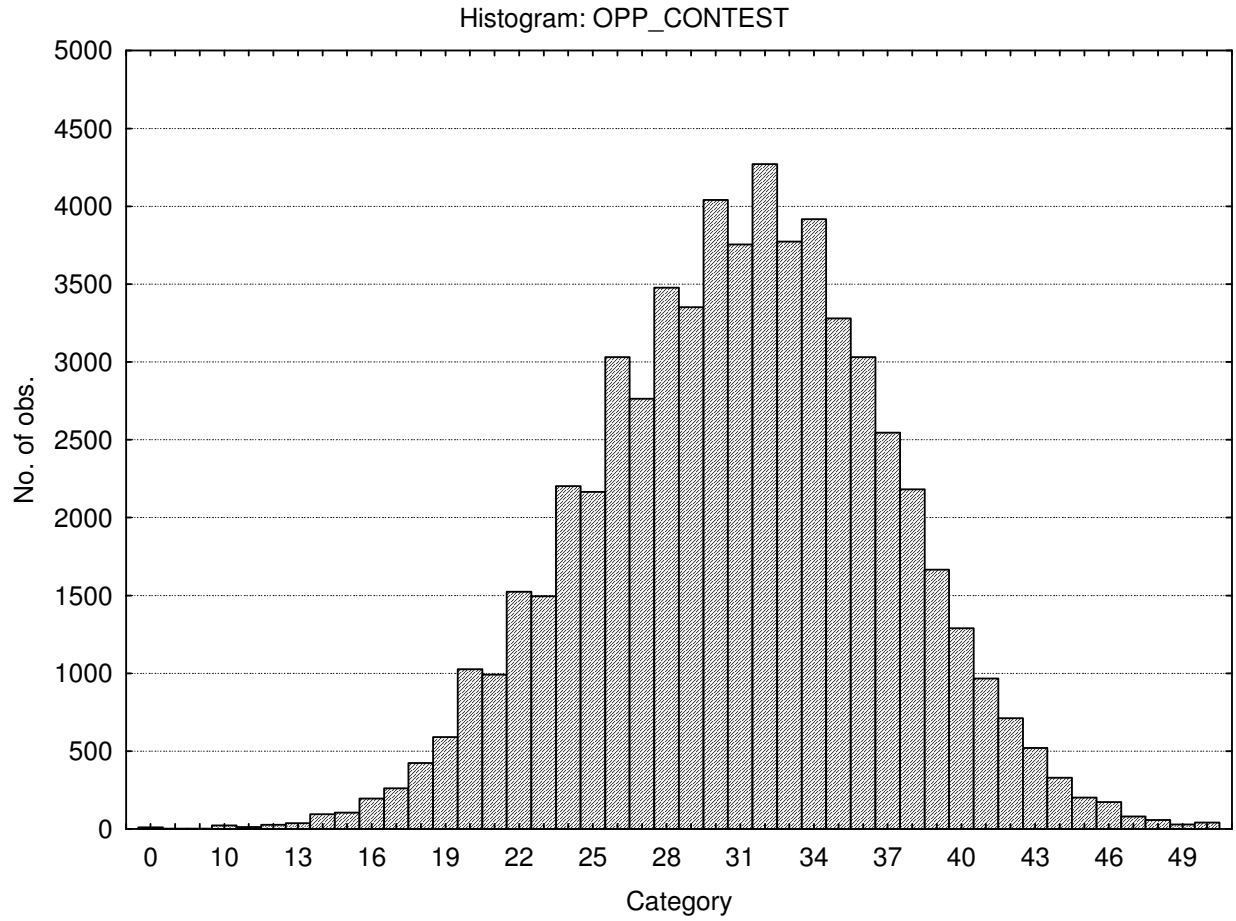
Reserved - Gregarious



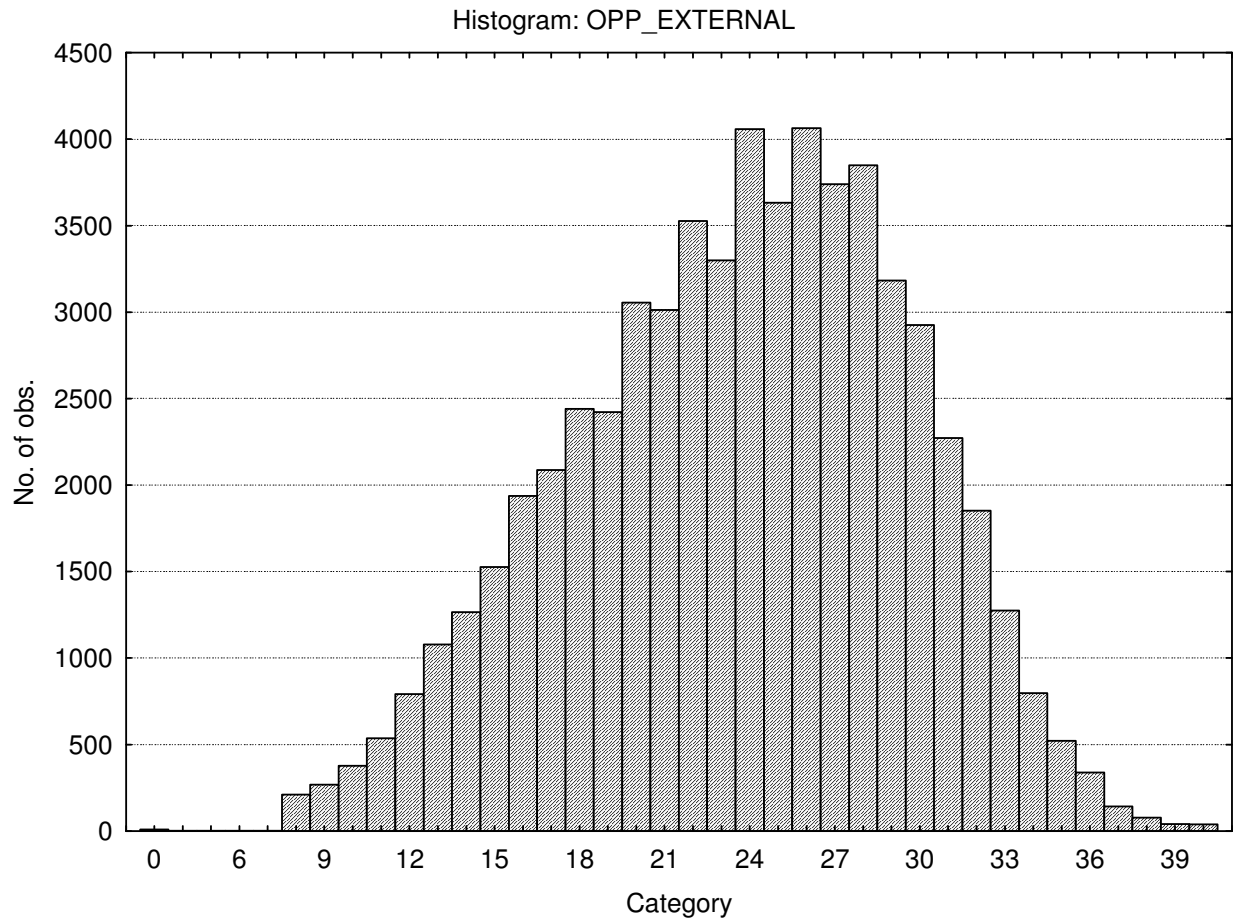
Direct - Persuasive



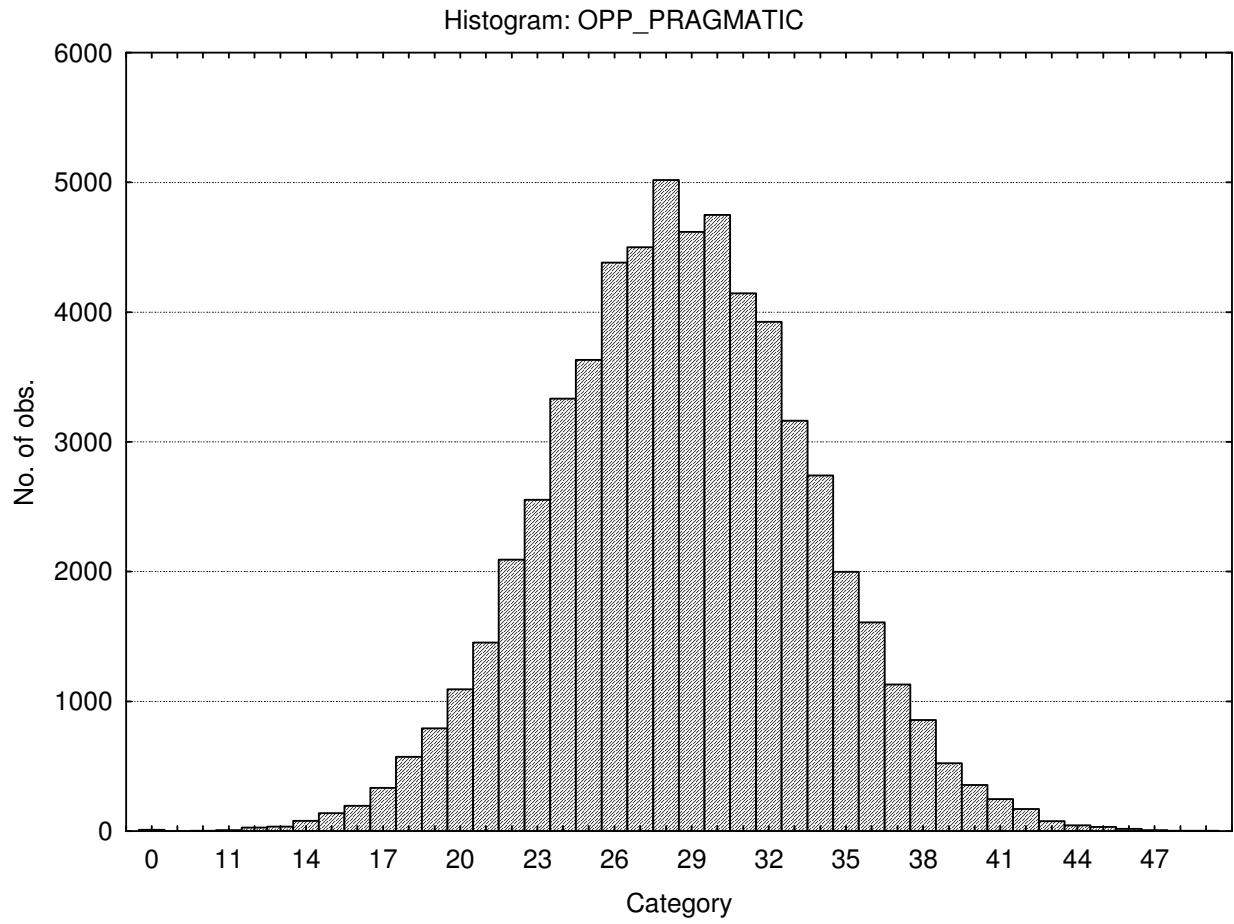
Composed - Contesting



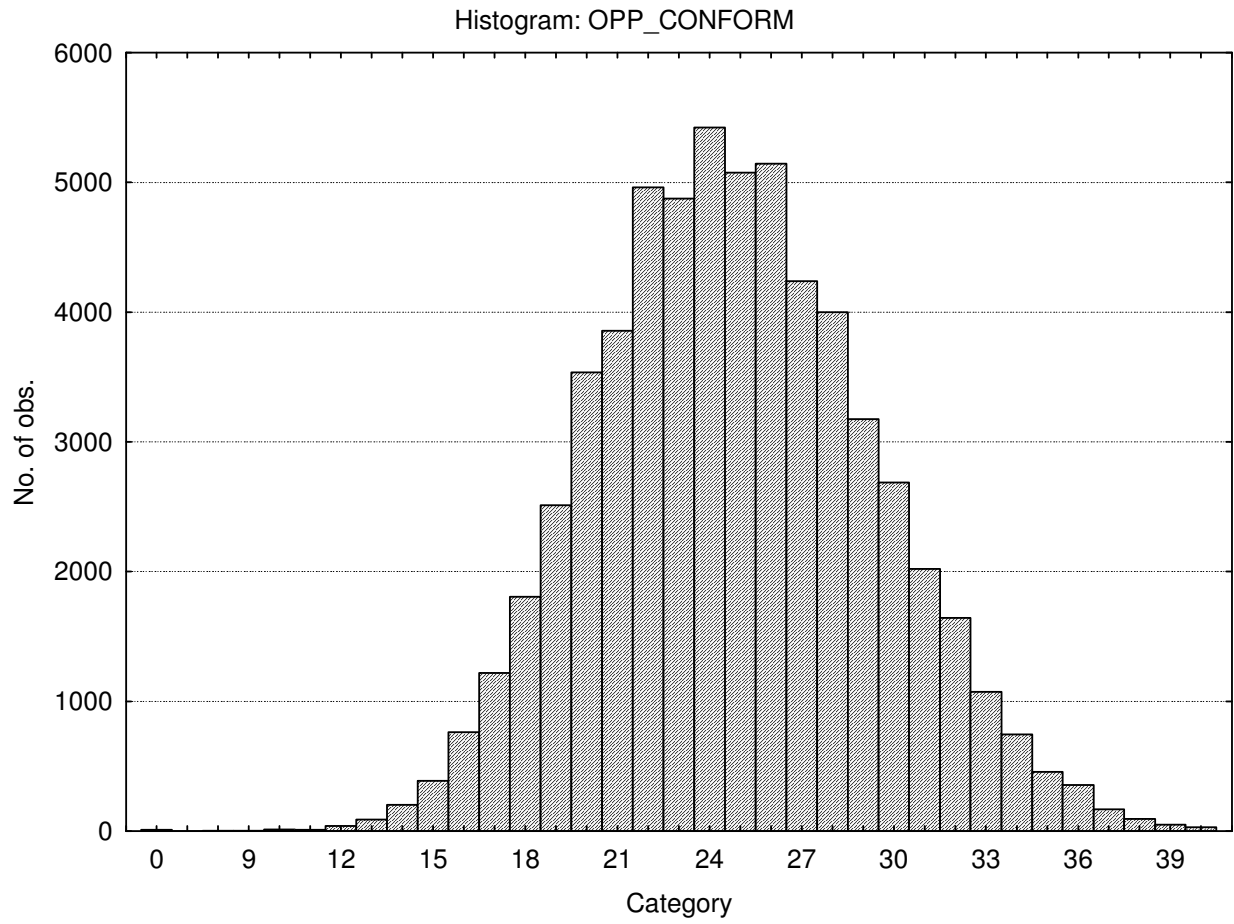
Optimistic - Pessimistic



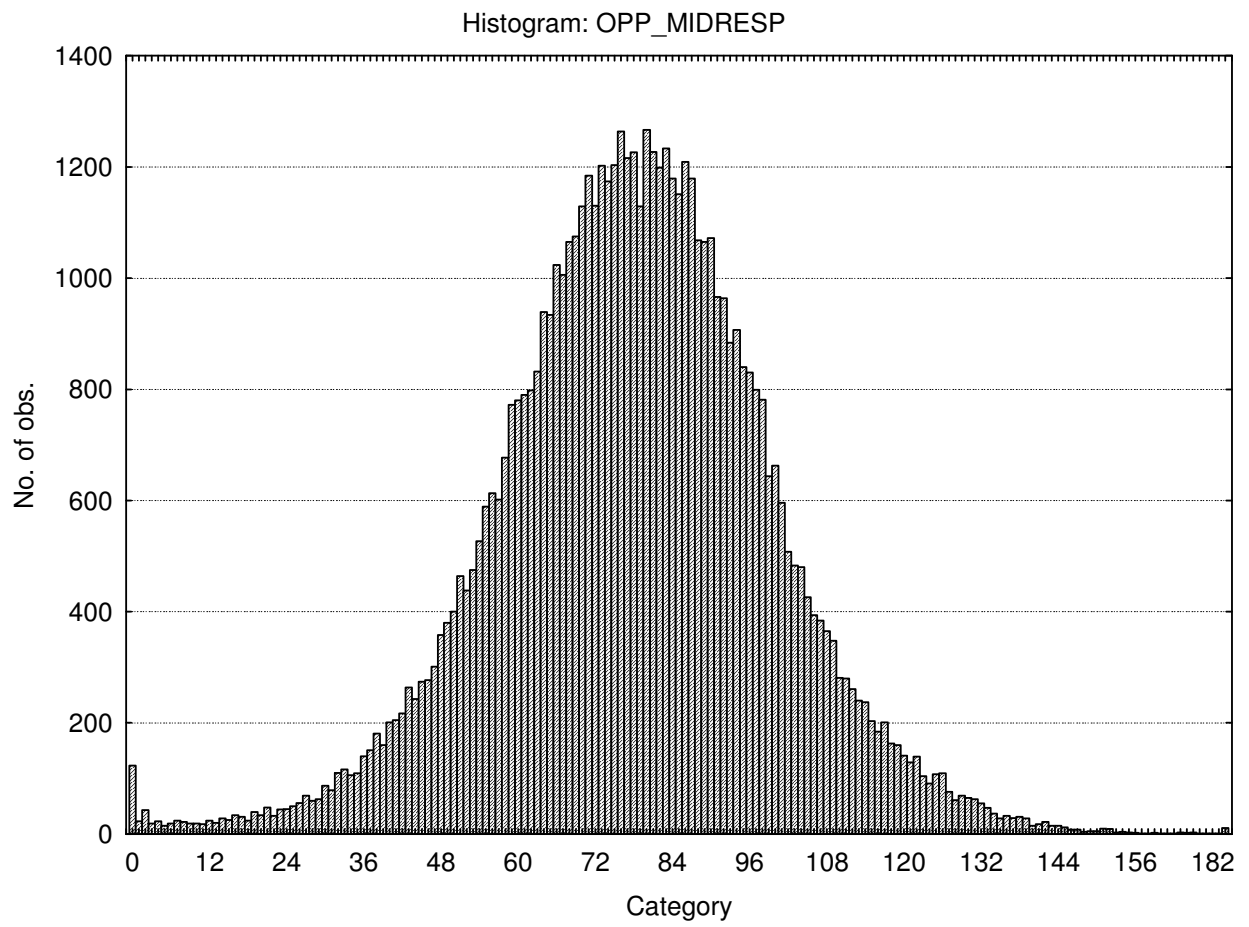
Abstract - Pragmatic



Conforming (Social desirability)



Central tendency



Stanine table

	S9_1	S9_2	S9_3	S9_4	S9_5	S9_6	S9_7	S9_8	S9_9
Assertive	0-22	23-25	26-27	28-30	31-32	33-35	36-37	38-40	41-50
Flexible	0-10	11-12	13-14	15-17	18-19	20-21	22-23	24-26	27-48
Trusting	0-21	22-24	25-28	29-31	32-34	35-38	39-41	42-44	45-55
Phlegmatic	0-25	26-29	30-32	33-36	37-39	40-43	44-46	47-50	51-60
Gregarious	0-23	24-26	27-29	30-32	33-35	36-38	39-41	42-44	45-50
Persuasive	0-17	18-19	20-22	23-25	26-27	28-30	31-33	34-36	37-45
Contesting	0-20	21-23	24-26	27-29	30-32	33-35	36-38	39-41	42-50
Pessimistic	0-13	14-16	17-19	20-22	23-25	26-28	29-31	32-34	35-40
Pragmatic	0-19	20-22	23-24	25-27	28-29	30-32	33-34	35-37	38-49
Conforming	0-16	17-19	20-21	22-23	24-25	26-28	29-30	31-32	33-40
Central Tendency	0-40	41-51	52-61	62-72	73-83	84-94	95-104	105-115	116-196