

Graduate Reasoning Test Battery Norm Group: South Africans of African race, updated 2010

Sample composition

The sample consisted of South Africans who declared their race to be African, tested by Psytech South Africa and collaborators in the period leading up to January 2010. Not all respondents completed the entire Graduate Reasoning Test Battery, therefore the biographical particulars are reported separately for the Graduate Verbal, Numerical and Abstract Reasoning tests.

Sample composition: Graduate Verbal Reasoning Test

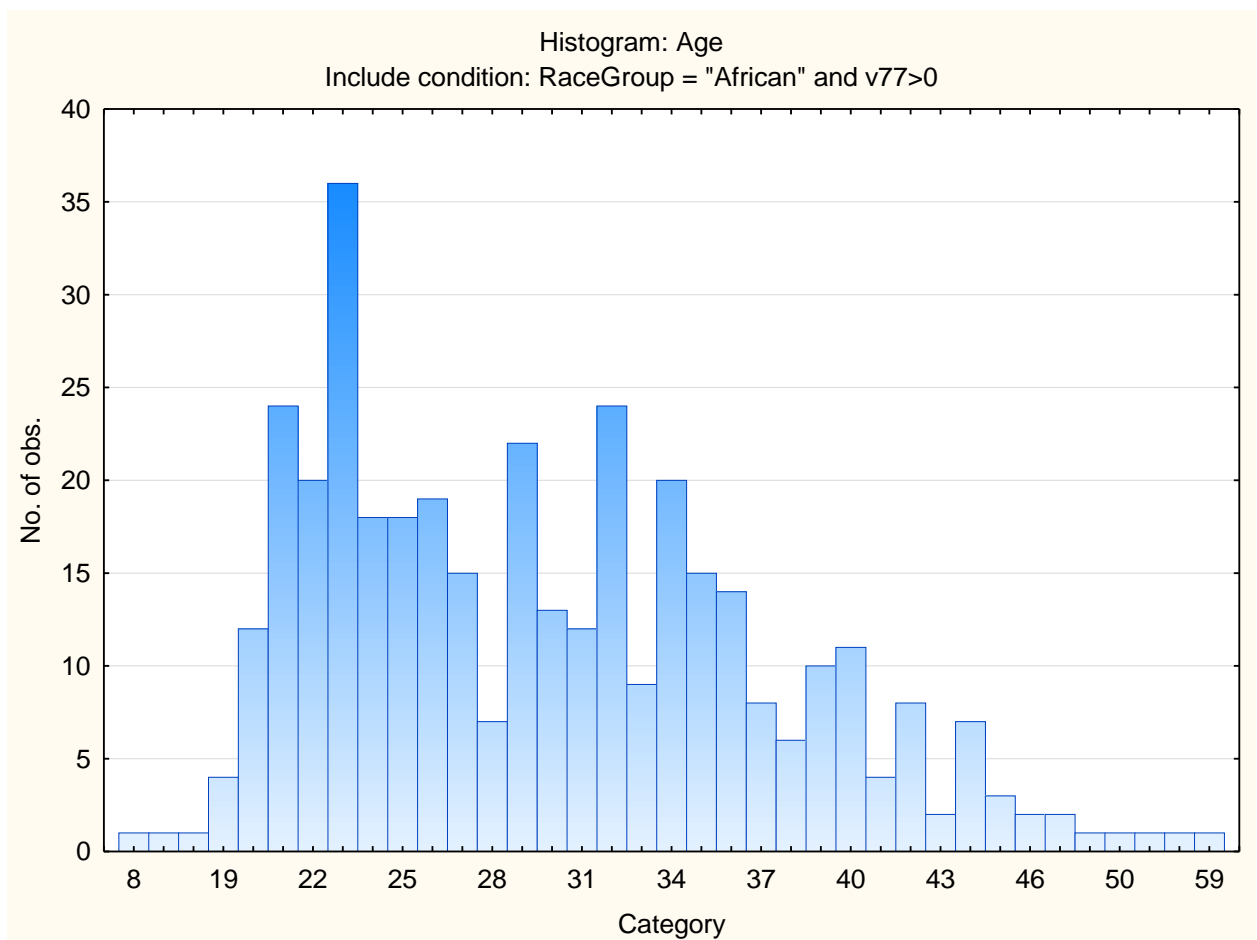
Category	Frequency table: Sex			
	Count	Cumulative Count	Percent	Cumulative Percent
F	152	152	39.68668	39.6867
M	230	382	60.05222	99.7389
U	1	383	0.26110	100.0000
Missing	0	383	0.00000	100.0000

Category	Frequency table: Education Group			
	Count	Cumulative Count	Percent	Cumulative Percent
Degree	129	129	33.68146	33.6815
Grade 12	80	209	20.88773	54.5692
Diploma	37	246	9.66057	64.2298
<Grade 12	9	255	2.34987	66.5796
Post Graduate	40	295	10.44386	77.0235
Certificate	6	301	1.56658	78.5901
Missing	82	383	21.40992	100.0000

Category	Frequency table: Language			
	Count	Cumulative Count	Percent	Cumulative Percent
English	74	74	19.32115	19.3211
Afrikaans	5	79	1.30548	20.6266
Setswana	28	107	7.31070	27.9373
isiXhosa	125	232	32.63708	60.5744
Xitsonga	6	238	1.56658	62.1410
isiZulu	41	279	10.70496	72.8460
Sesotho	21	300	5.48303	78.3290
Sepedi	13	313	3.39426	81.7232
isiNdebele"	3	316	0.78329	82.5065
Tshivenda	5	321	1.30548	83.8120
siSwati	3	324	0.78329	84.5953
Missing	59	383	15.40470	100.0000

Category	Frequency table: Language Group			
	Count	Cumulative Count	Percent	Cumulative Percent
English	74	74	19.32115	19.3211
Afrikaans	5	79	1.30548	20.6266
Indigenous	248	327	64.75196	85.3786
Missing	56	383	14.62141	100.0000

Variable	Descriptive Statistics: Age					
	Mean	Std.Dev	Minimum	Maximum	N	No.cases Missing
Age	29.77480	7.532918	8.000000	59.000000	373	10



Sample composition: Graduate Numerical Reasoning Test

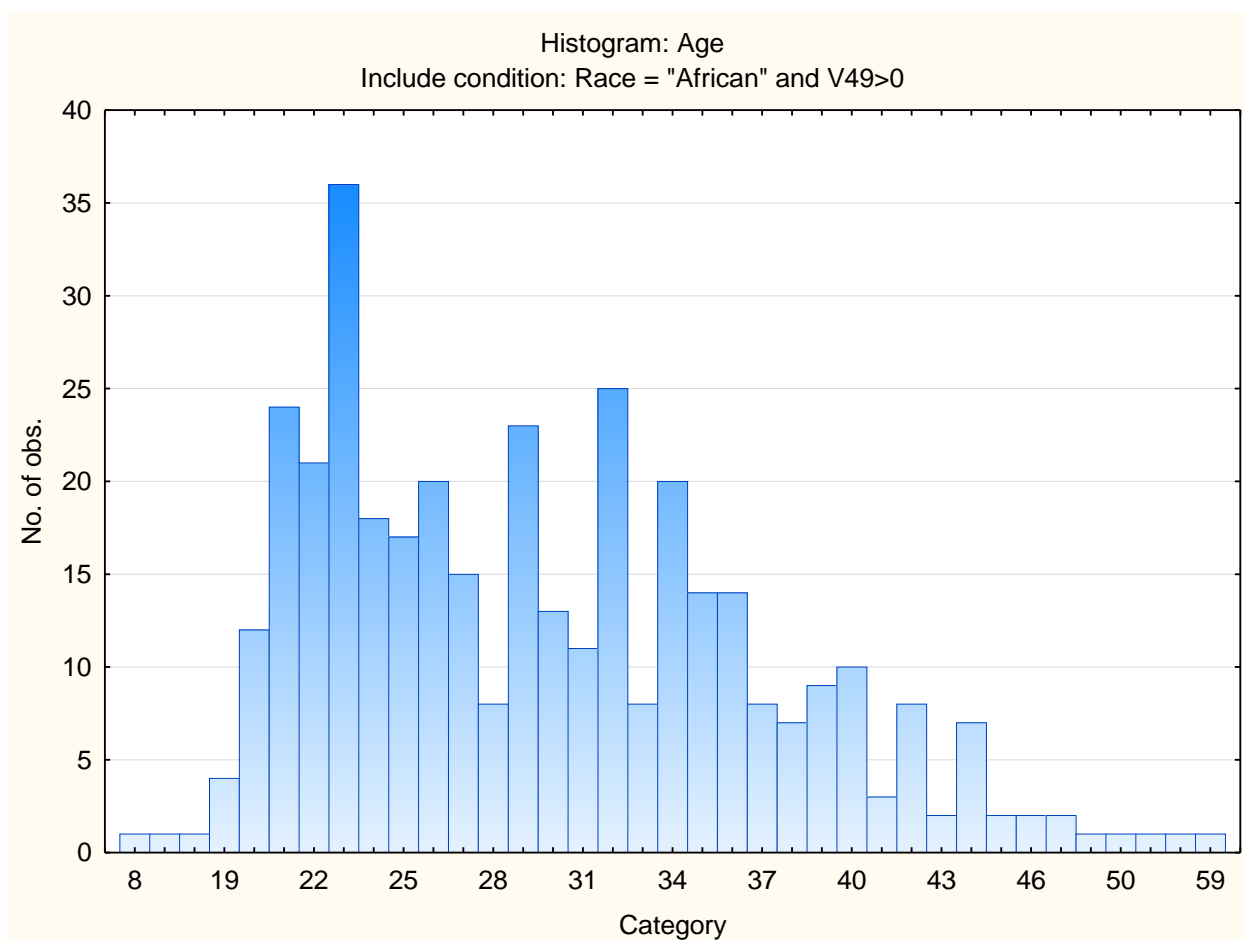
Category	Frequency table: Sex			
	Count	Cumulative Count	Percent	Cumulative Percent
F	152	152	40.10554	40.1055
M	226	378	59.63061	99.7361
U	1	379	0.26385	100.0000
Missing	0	379	0.00000	100.0000

Category	Frequency table: Education Group			
	Count	Cumulative Count	Percent	Cumulative Percent
Degree	122	122	32.18997	32.1900
Grade 12	83	205	21.89974	54.0897
Diploma	37	242	9.76253	63.8522
<Grade 12	9	251	2.37467	66.2269
Post Graduate	39	290	10.29024	76.5172
Certificate	6	296	1.58311	78.1003
Missing	83	379	21.89974	100.0000

Category	Frequency table: Language Group			
	Count	Cumulative Count	Percent	Cumulative Percent
English	74	74	19.52507	19.5251
Afrikaans	5	79	1.31926	20.8443
Indigenous	246	325	64.90765	85.7520
Missing	54	379	14.24802	100.0000

Category	Frequency table: Language			
	Count	Cumulative Count	Percent	Cumulative Percent
English	74	74	19.52507	19.5251
Afrikaans	5	79	1.31926	20.8443
Setswana	26	105	6.86016	27.7045
isiXhosa	123	228	32.45383	60.1583
Xitsonga	5	233	1.31926	61.4776
isiZulu	46	279	12.13720	73.6148
Sesotho	20	299	5.27704	78.8918
Sepedi	13	312	3.43008	82.3219
isiNdebele	3	315	0.79156	83.1135
Tshivenda	4	319	1.05541	84.1689
siSwati	3	322	0.79156	84.9604
Missing	57	379	15.03958	100.0000

Variable	Descriptive Statistics: Age					
	Mean	Std.Dev	Minimum	Maximum	N	No.cases Missing
Age	29.62803	7.469337	8.000000	59.00000	371	8



Sample composition: Graduate Abstract Reasoning Test

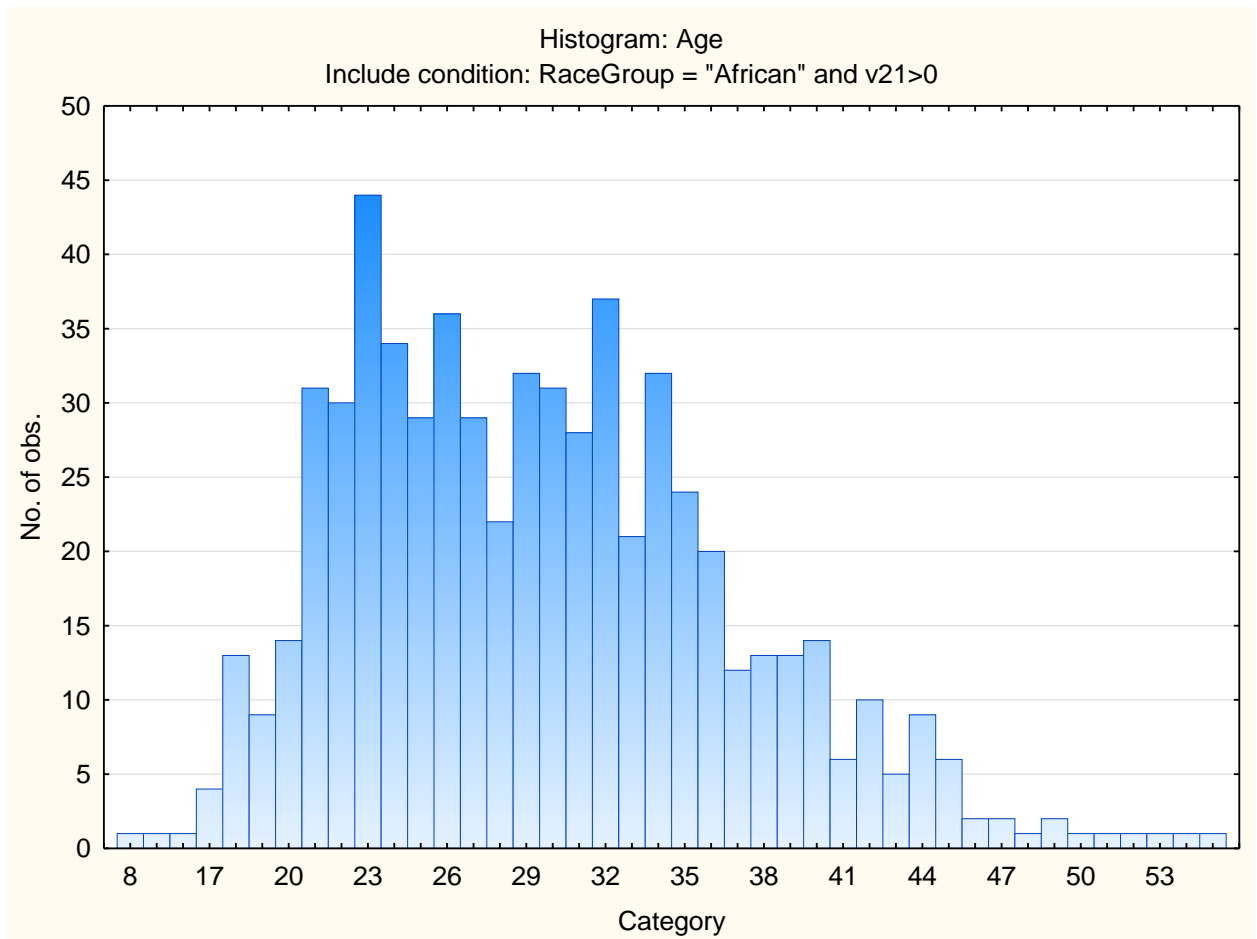
Category	Frequency table: Sex			
	Count	Cumulative Count	Percent	Cumulative Percent
F	255	255	40.22082	40.2208
M	376	631	59.30599	99.5268
U	3	634	0.47319	100.0000
Missing	0	634	0.00000	100.0000

Category	Frequency table: Education Group			
	Count	Cumulative Count	Percent	Cumulative Percent
Degree	169	169	26.65615	26.6562
Grade 12	129	298	20.34700	47.0032
Diploma	108	406	17.03470	64.0379
<Grade 12	13	419	2.05047	66.0883
Post Graduate	65	484	10.25237	76.3407
Certificate	7	491	1.10410	77.4448
Missing	143	634	22.55521	100.0000

Category	Frequency table: Language			
	Count	Cumulative Count	Percent	Cumulative Percent
English	82	82	12.93375	12.9338
Afrikaans	5	87	0.78864	13.7224
Setswana	58	145	9.14826	22.8707
isiXhosa	203	348	32.01893	54.8896
Xitsonga	13	361	2.05047	56.9401
isiZulu	104	465	16.40379	73.3438
Sesotho	50	515	7.88644	81.2303
Sepedi	22	537	3.47003	84.7003
isiNdebele"	3	540	0.47319	85.1735
Tshivenda	6	546	0.94637	86.1199
siSwati	8	554	1.26183	87.3817
Missing	80	634	12.61830	100.0000

Category	Frequency table: Language Group			
	Count	Cumulative Count	Percent	Cumulative Percent
English	82	82	12.93375	12.9338
Afrikaans	5	87	0.78864	13.7224
Indigenous	475	562	74.92114	88.6435
Missing	72	634	11.35647	100.0000

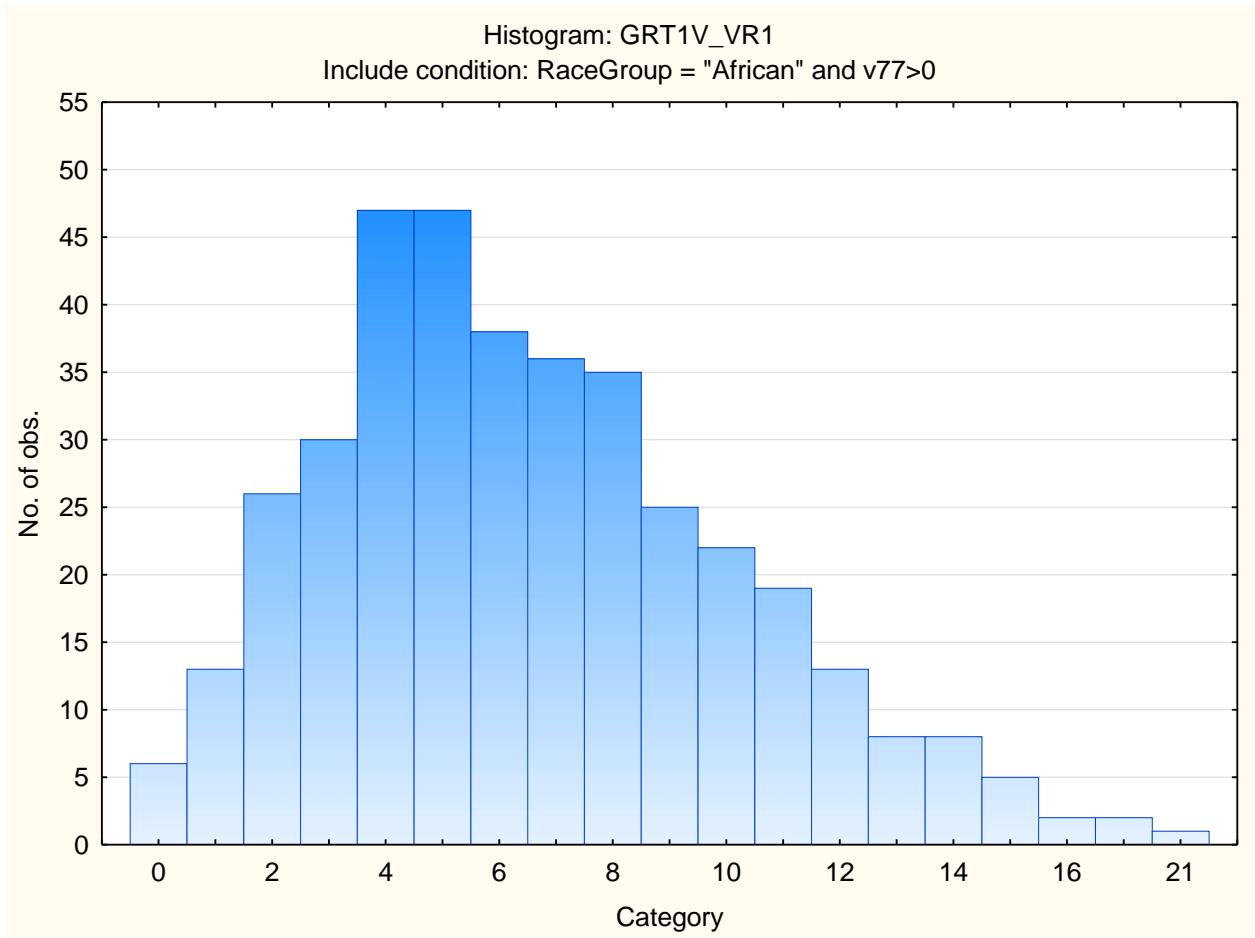
Variable	Descriptive Statistics: Age					
	Mean	Std.Dev	Minimum	Maximum	N	No.cases Missing
Age	29.54968	7.300527	8.000000	59.000000	624	10



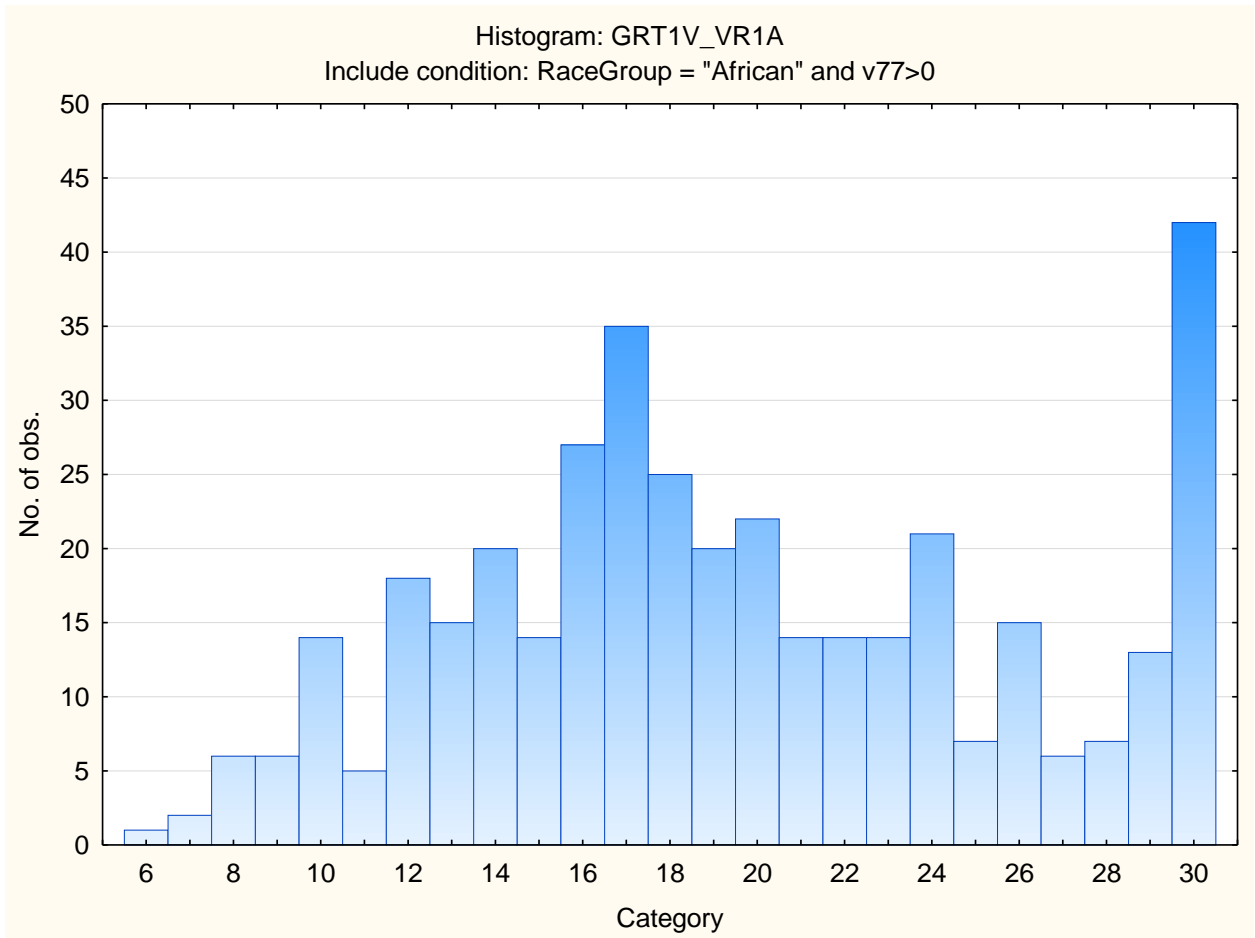
Descriptive statistics for Graduate Reasoning Test Battery subtests

Variable	Descriptive Statistics					
	Mean	Std.Dev	Minimum	Maximum	N	No.cases Missing
Graduate verbal reasoning test	6.61097	3.668542	0.000000	21.00000	383	0
Graduate verbal reasoning items attempted	19.59008	6.251836	6.000000	30.00000	383	0
Graduate numerical reasoning test	6.12929	3.635024	0.000000	20.00000	379	0
Graduate numerical reasoning items attempted	15.52507	5.588753	1.000000	25.00000	379	0
Graduate abstract reasoning test	8.34543	3.423585	0.000000	20.00000	634	0
Graduate abstract reasoning items attempted	19.21924	4.734086	1.000000	25.00000	634	0

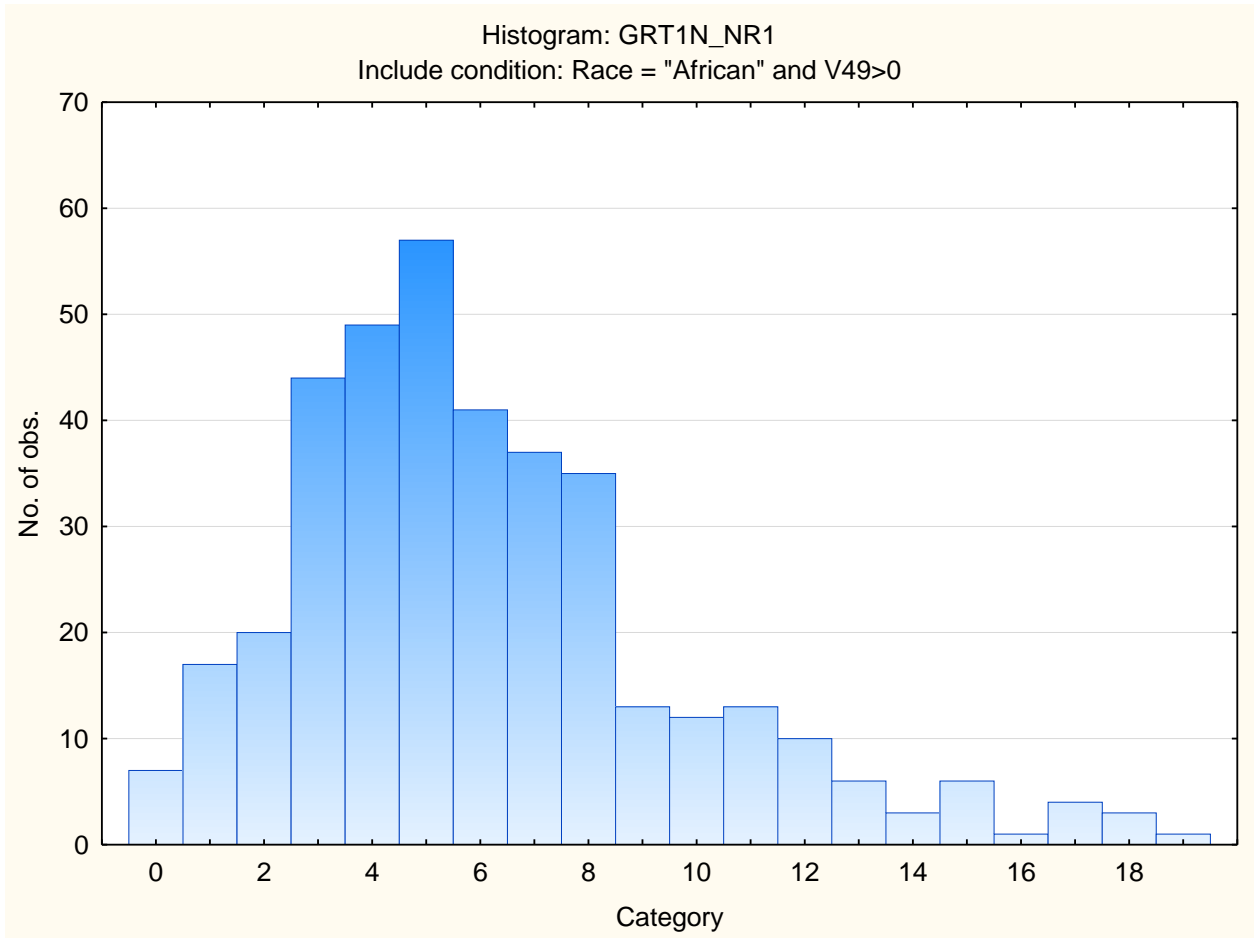
Frequency distribution: Graduate verbal reasoning test



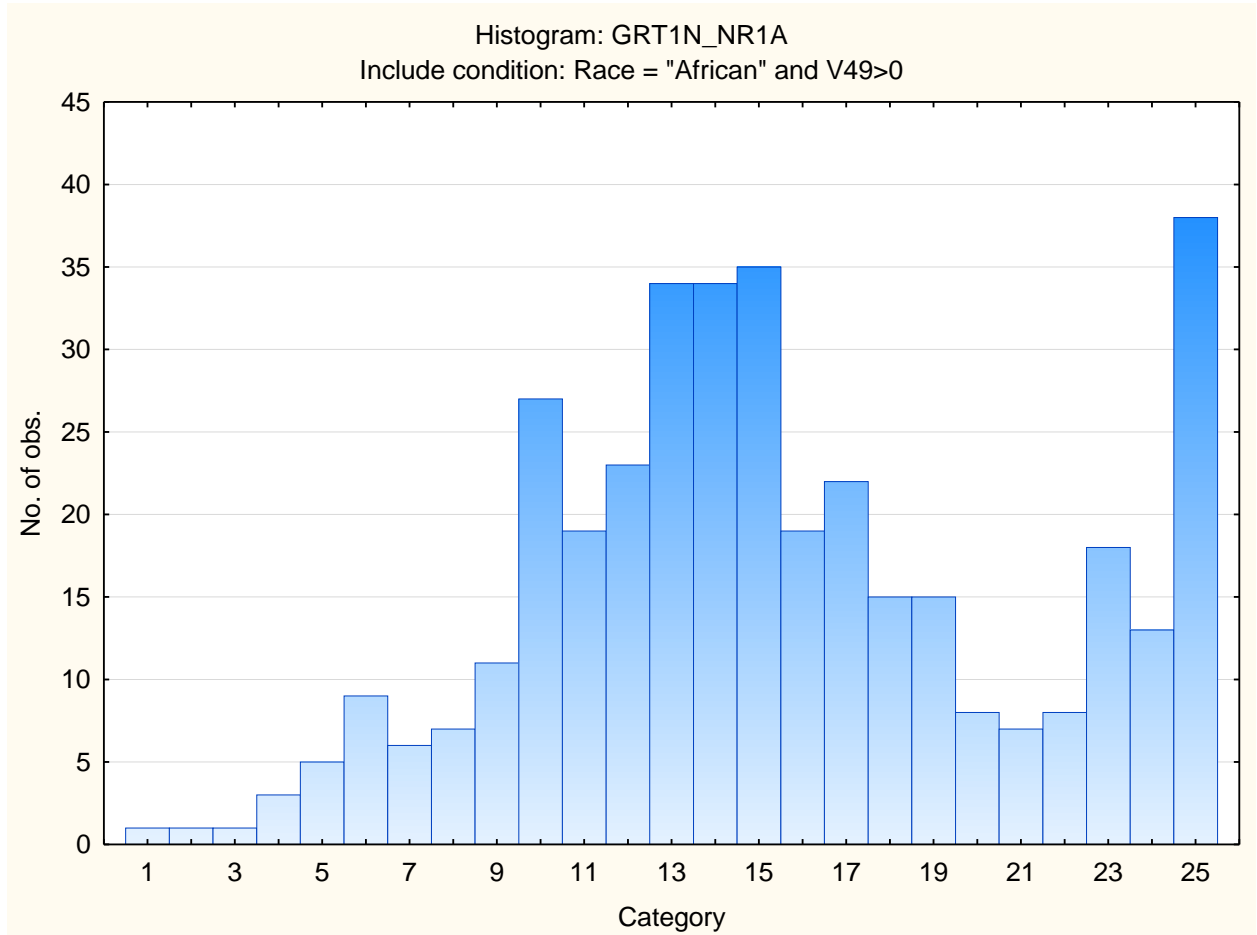
Frequency distribution: Graduate verbal reasoning items attempted



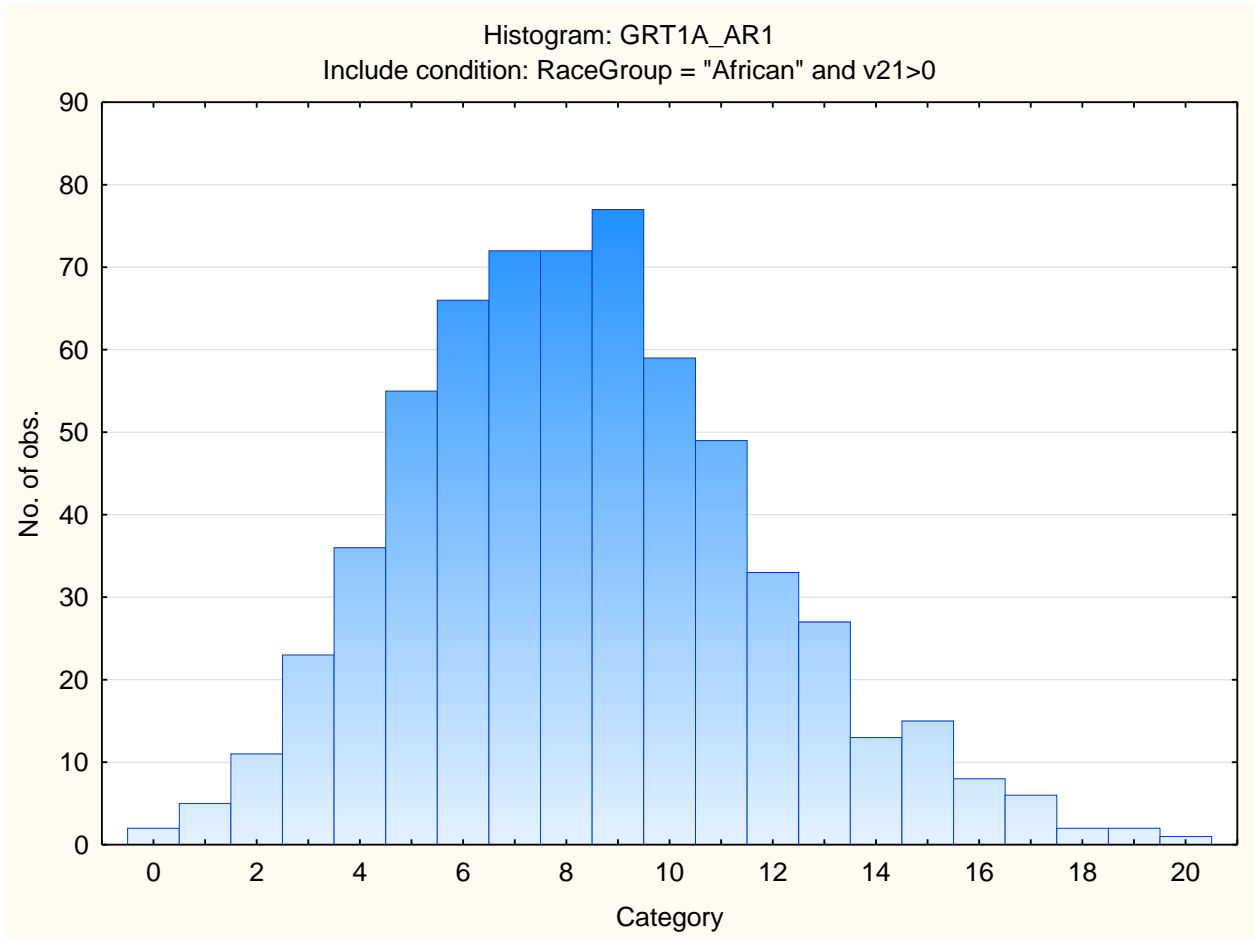
Frequency distribution: Graduate Numerical Reasoning test



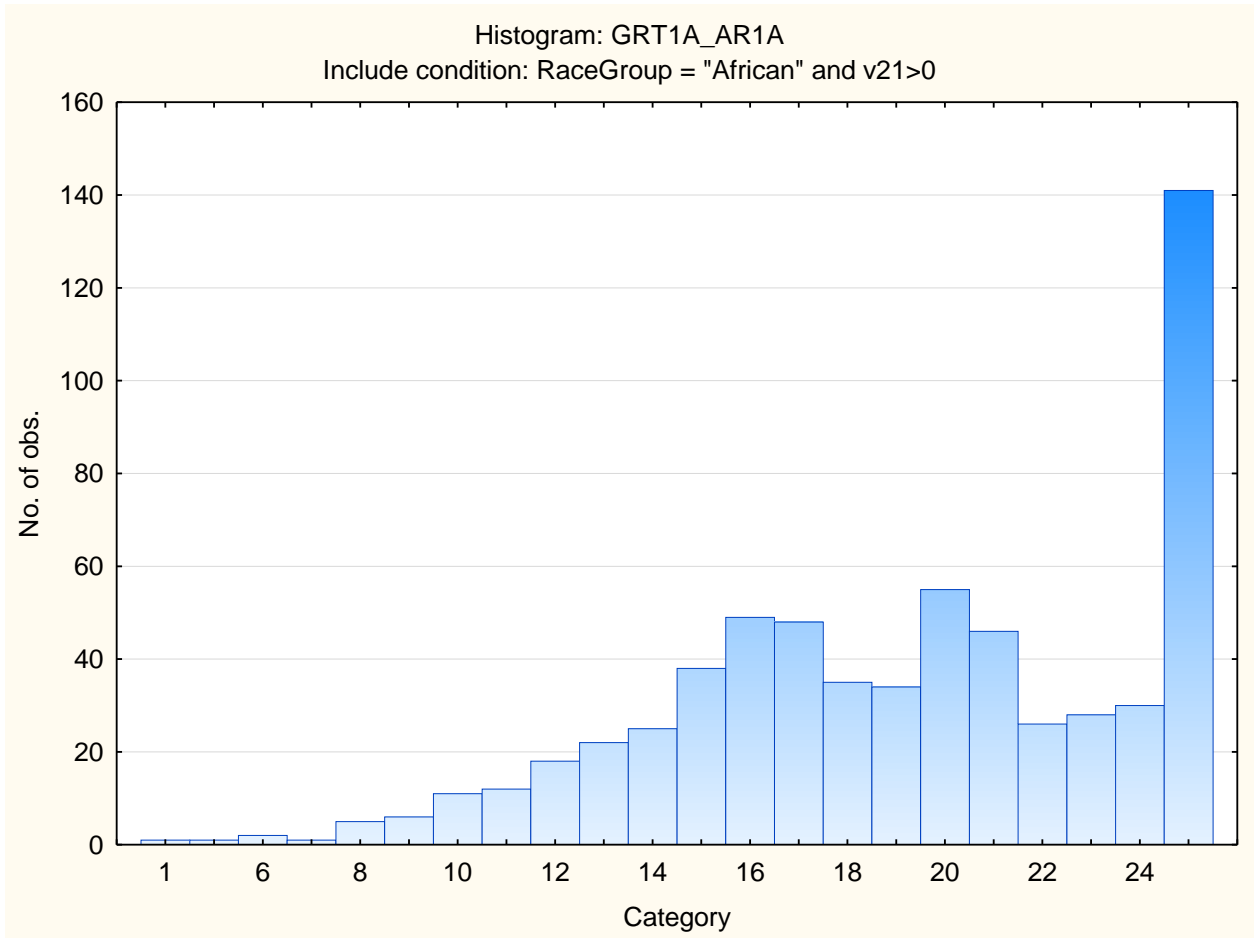
Frequency distribution: Graduate Numerical Reasoning items attempted.



Frequency distribution: Graduate Abstract Reasoning test



Frequency distribution: Graduate Abstract Reasoning items attempted



Stanine table

	S9_1	S9_2	S9_3	S9_4	S9_5	S9_6	S9_7	S9_8	S9_9
Graduate Verbal Reasoning	0-0	1-2	3-3	4-5	6-7	8-9	10-11	12-13	14-21
Graduate Verbal Items Attempted	6-8	9-11	12-14	15-18	19-21	22-24	25-27	28-30	
Graduate Numerical Reasoning	0--1	0-1	2-3	4-5	6-7	8-8	9-10	11-12	13-20
Graduate Numerical Items Attempted	1-5	6-8	9-11	12-14	15-16	17-19	20-22	23-25	
Graduate Abstract Reasoning	0-2	3-4	5-5	6-7	8-9	10-10	11-12	13-14	15-20
Graduate Abstract Items Attempted	1-10	11-13	14-15	16-18	19-20	21-22	23-25		