

Graduate Reasoning Test Battery norm table: South Africans of Coloured race, updated 2010

Sample composition

The sample consisted of South Africans who declared their race to be Coloured, tested by Psytech South Africa and collaborators in the period leading up to January 2010. Because not all respondents completed all the subtests of the Graduate Reasoning Test Battery, the biographical particulars are reported separately for the Graduate Verbal, Numerical and Abstract Reasoning tests.

Sample composition: Graduate Verbal Reasoning Test

Category	Frequency table: Sex			
	Count	Cumulative Count	Percent	Cumulative Percent
F	131	131	38.19242	38.1924
M	211	342	61.51603	99.7085
U	1	343	0.29155	100.0000
Missing	0	343	0.00000	100.0000

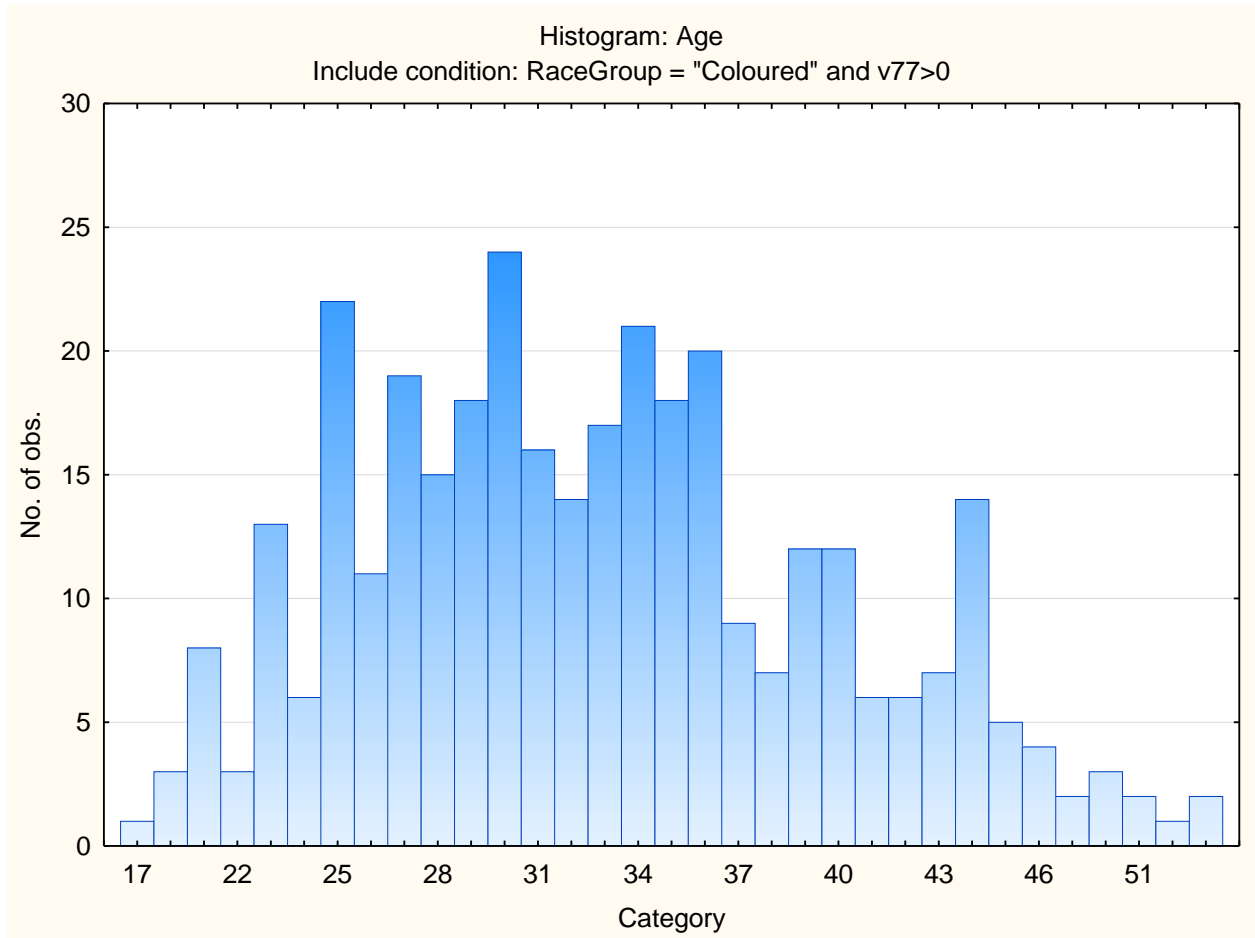
Category	Frequency table: Education Group			
	Count	Cumulative Count	Percent	Cumulative Percent
Degree	50	50	14.57726	14.5773
Grade 12	145	195	42.27405	56.8513
Diploma	42	237	12.24490	69.0962
<Grade 12	35	272	10.20408	79.3003
Post Graduate	27	299	7.87172	87.1720
Certificate	11	310	3.20700	90.3790
Missing	33	343	9.62099	100.0000

Category	Frequency table: Language			
	Count	Cumulative Count	Percent	Cumulative Percent
English	234	234	68.22157	68.2216
Afrikaans	80	314	23.32362	91.5452
isiXhosa	2	316	0.58309	92.1283
isiZulu	1	317	0.29155	92.4198
Missing	26	343	7.58017	100.0000

Category	Frequency table: Language Group			
	Count	Cumulative Count	Percent	Cumulative Percent
English	234	234	68.22157	68.2216
Afrikaans	80	314	23.32362	91.5452
Indigenous	3	317	0.87464	92.4198
Missing	26	343	7.58017	100.0000

Category	Frequency table: Race Group			
	Count	Cumulative Count	Percent	Cumulative Percent
Coloured	343	343	100.0000	100.0000
Missing	0	343	0.0000	100.0000

Variable	Descriptive Statistics: Age					
	Mean	Std.Dev	Minimum	Maximum	N	No.cases Missing
Age	32.86804	7.064631	17.00000	54.00000	341	2



Sample composition: Graduate Numerical Reasoning Test

Category	Frequency table: Sex			
	Count	Cumulative Count	Percent	Cumulative Percent
F	131	131	38.30409	38.3041
M	210	341	61.40351	99.7076
U	1	342	0.29240	100.0000
Missing	0	342	0.00000	100.0000

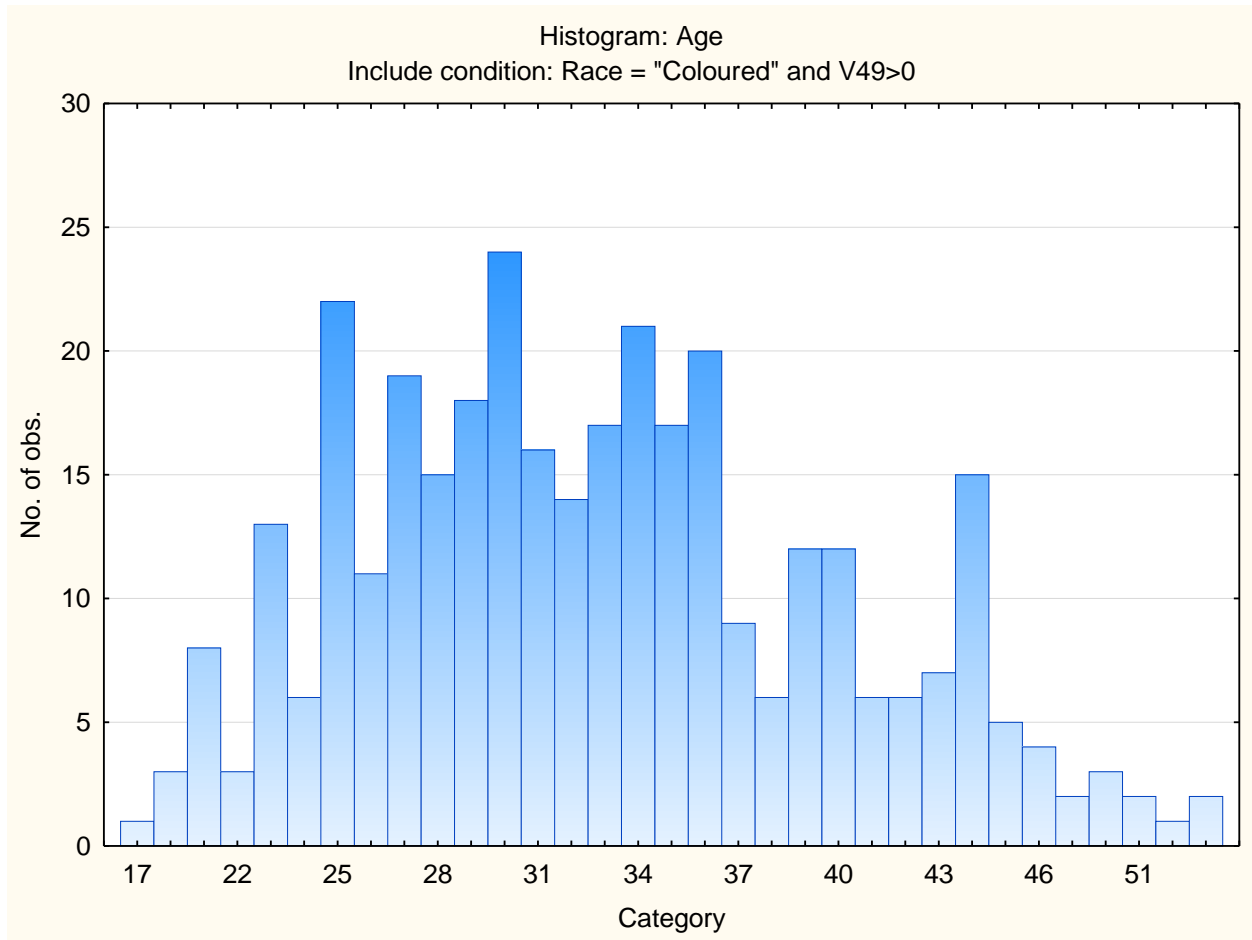
Category	Frequency table: Education Group			
	Count	Cumulative Count	Percent	Cumulative Percent
Degree	49	49	14.32749	14.3275

Category	Frequency table: Education Group			
	Count	Cumulative Count	Percent	Cumulative Percent
Grade 12	145	194	42.39766	56.7251
Diploma	41	235	11.98830	68.7135
<Grade 12	36	271	10.52632	79.2398
Post Graduate	27	298	7.89474	87.1345
Certificate	11	309	3.21637	90.3509
Missing	33	342	9.64912	100.0000

Category	Frequency table: Language			
	Count	Cumulative Count	Percent	Cumulative Percent
English	234	234	68.42105	68.4211
Afrikaans	79	313	23.09942	91.5205
isiXhosa	2	315	0.58480	92.1053
isiZulu	1	316	0.29240	92.3977
Missing	26	342	7.60234	100.0000

Category	Frequency table: Language Group			
	Count	Cumulative Count	Percent	Cumulative Percent
English	234	234	68.42105	68.4211
Afrikaans	79	313	23.09942	91.5205
Indigenous	3	316	0.87719	92.3977
Missing	26	342	7.60234	100.0000

Variable	Descriptive Statistics: Age					
	Mean	Std.Dev	Minimum	Maximum	N	No.cases Missing
Age	32.87941	7.094403	17.00000	54.00000	340	2



Sample composition: Graduate Abstract Reasoning Test

Category	Frequency table: Sex			
	Count	Cumulative Count	Percent	Cumulative Percent
F	140	140	38.46154	38.4615
M	223	363	61.26374	99.7253
U	1	364	0.27473	100.0000
Missing	0	364	0.00000	100.0000

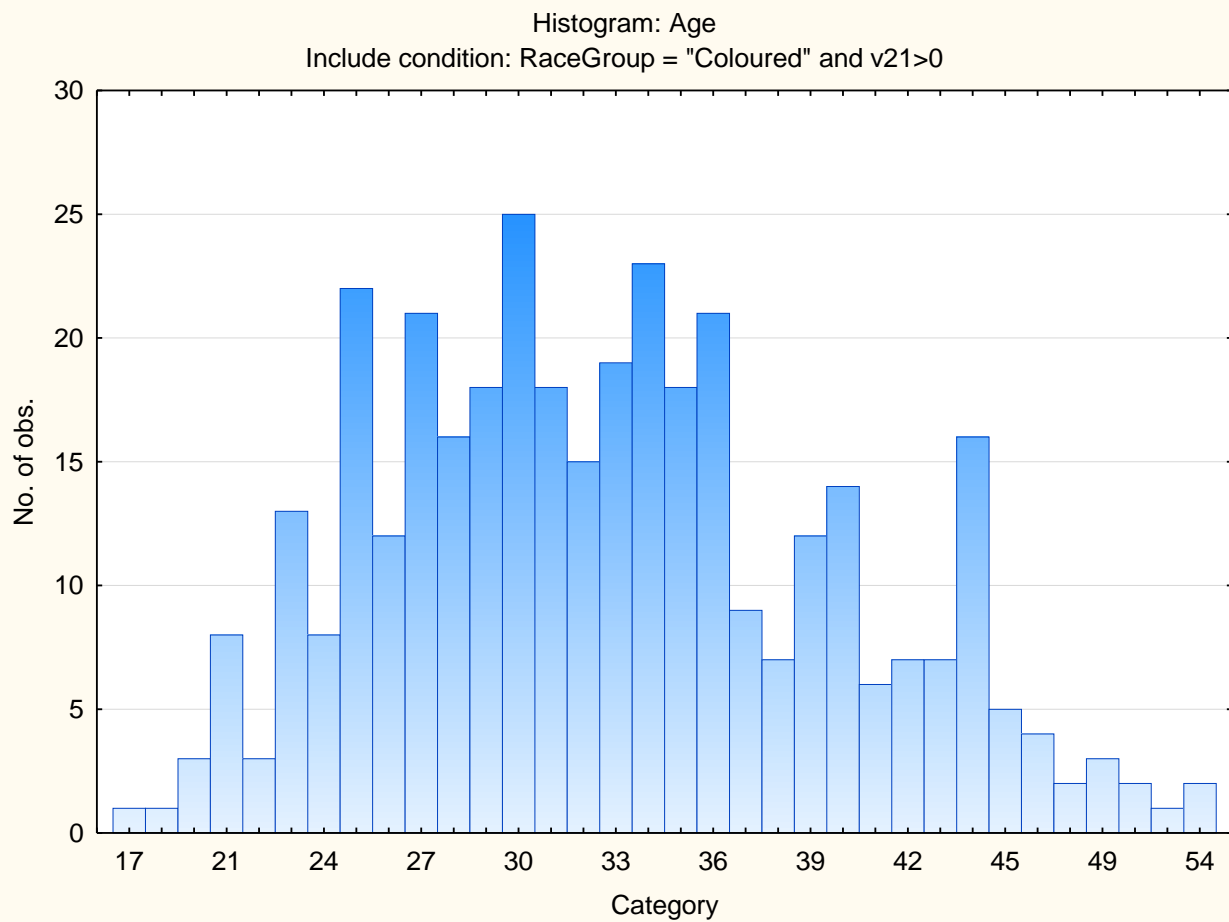
Category	Frequency table: Education Group			
	Count	Cumulative Count	Percent	Cumulative Percent
Degree	55	55	15.10989	15.1099
Grade 12	151	206	41.48352	56.5934
Diploma	45	251	12.36264	68.9560
<Grade 12	36	287	9.89011	78.8462

Category	Frequency table: Education Group			
	Count	Cumulative Count	Percent	Cumulative Percent
Post Graduate	29	316	7.96703	86.8132
Certificate	11	327	3.02198	89.8352
Missing	37	364	10.16484	100.0000

Category	Frequency table: Language Group			
	Count	Cumulative Count	Percent	Cumulative Percent
English	241	241	66.20879	66.2088
Afrikaans	94	335	25.82418	92.0330
Indigenous	3	338	0.82418	92.8571
Missing	26	364	7.14286	100.0000

Category	Frequency table: Language			
	Count	Cumulative Count	Percent	Cumulative Percent
English	241	241	66.20879	66.2088
Afrikaans	94	335	25.82418	92.0330
isiXhosa	2	337	0.54945	92.5824
isiZulu	1	338	0.27473	92.8571
Missing	26	364	7.14286	100.0000

Variable	Descriptive Statistics: Age					
	Mean	Std.Dev	Minimum	Maximum	N	No.cases Missing
Age	32.83702	7.045437	17.00000	54.00000	362	2

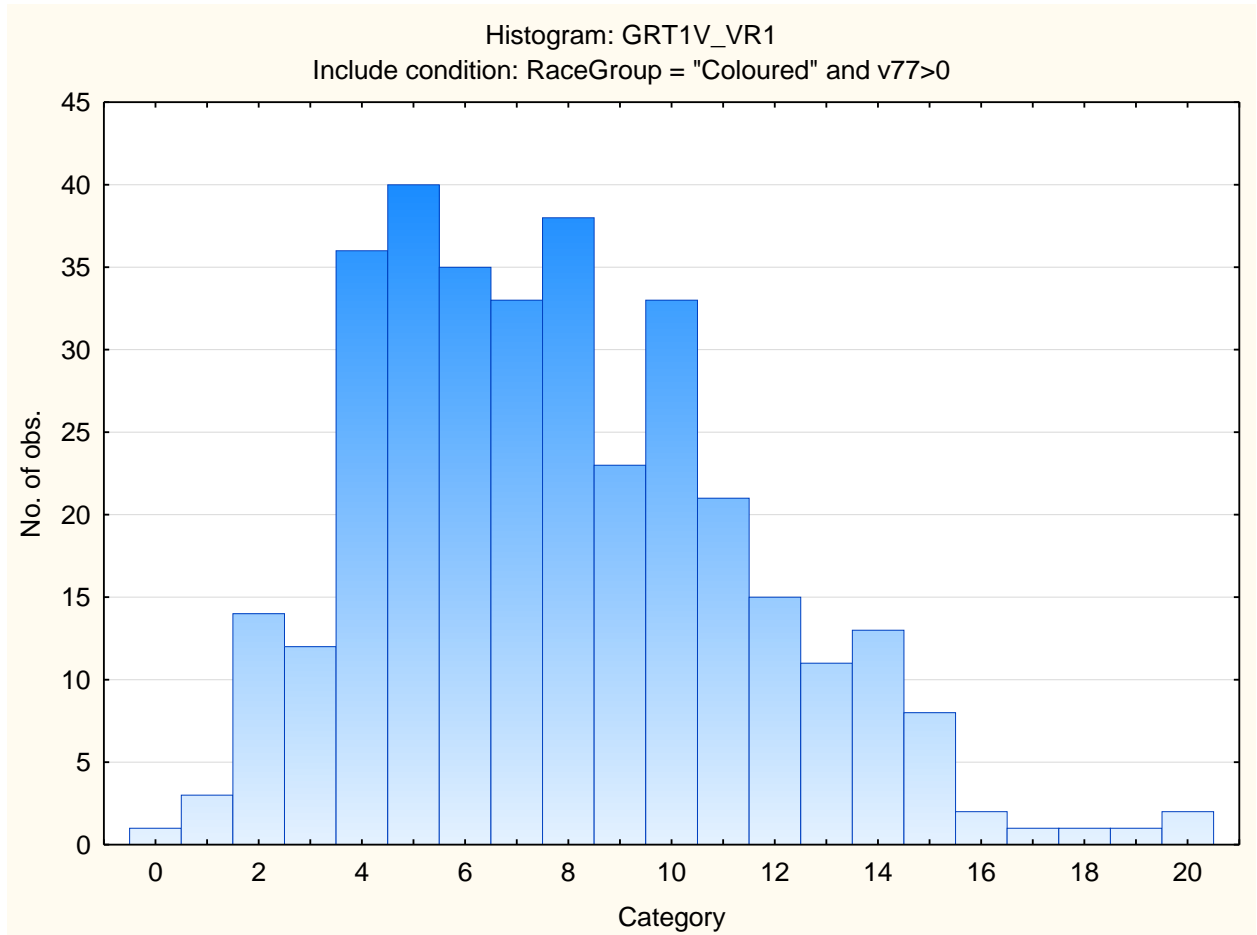


Descriptive statistics for Graduate Reasoning Test Battery subtests

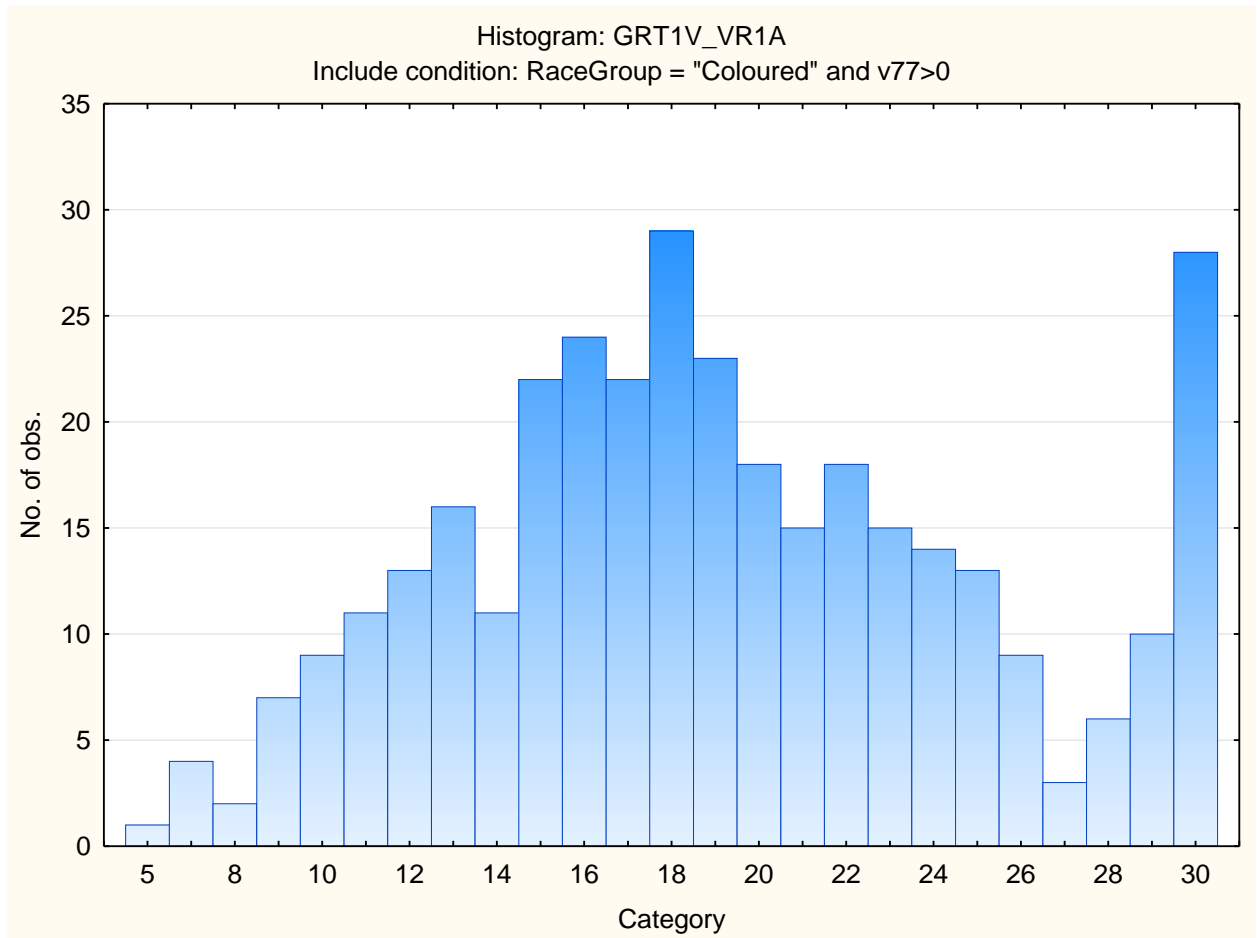
Variable	Descriptive Statistics					
	Mean	Std.Dev	Minimum	Maximum	N	No.cases Missing
Graduate Verbal Reasoning	7.79883	3.646323	0.000000	20.00000	343	0
Graduate Verbal Reasoning items attempted	19.17784	5.951596	5.000000	30.00000	343	0
Graduate Numerical Reasoning	7.91520	4.225513	1.000000	23.00000	342	0
Graduate Numerical Reasoning items attempted	16.16082	5.199863	4.000000	25.00000	342	0
Graduate Abstract Reasoning	9.79396	3.764246	1.000000	19.00000	364	0
Graduate Abstract Reasoning Items Attempted	19.18132	4.585290	5.000000	25.00000	364	0

Frequency distributions on Graduate Reasoning Test subtests

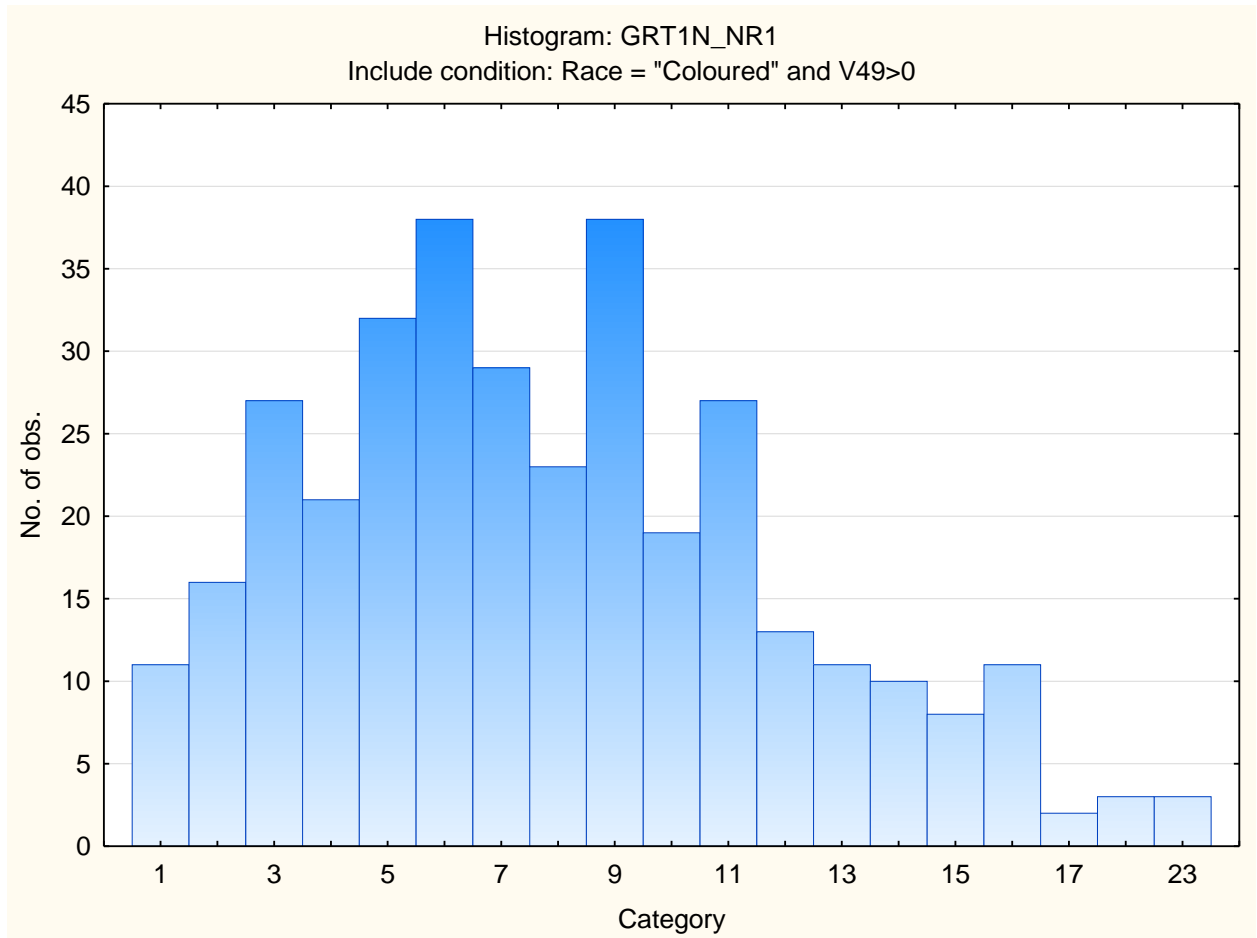
Graduate Verbal Reasoning



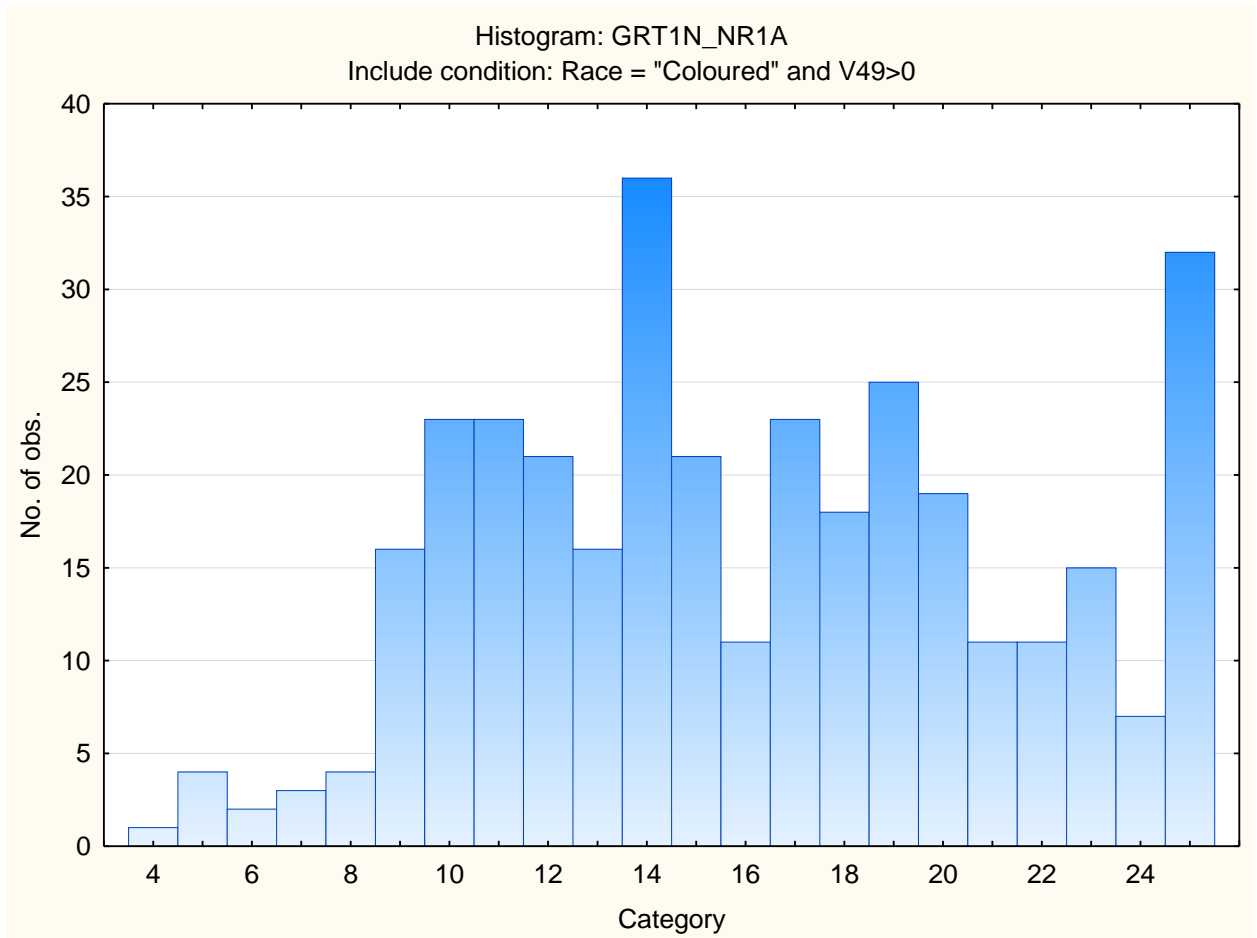
Graduate Verbal Reasoning items attempted



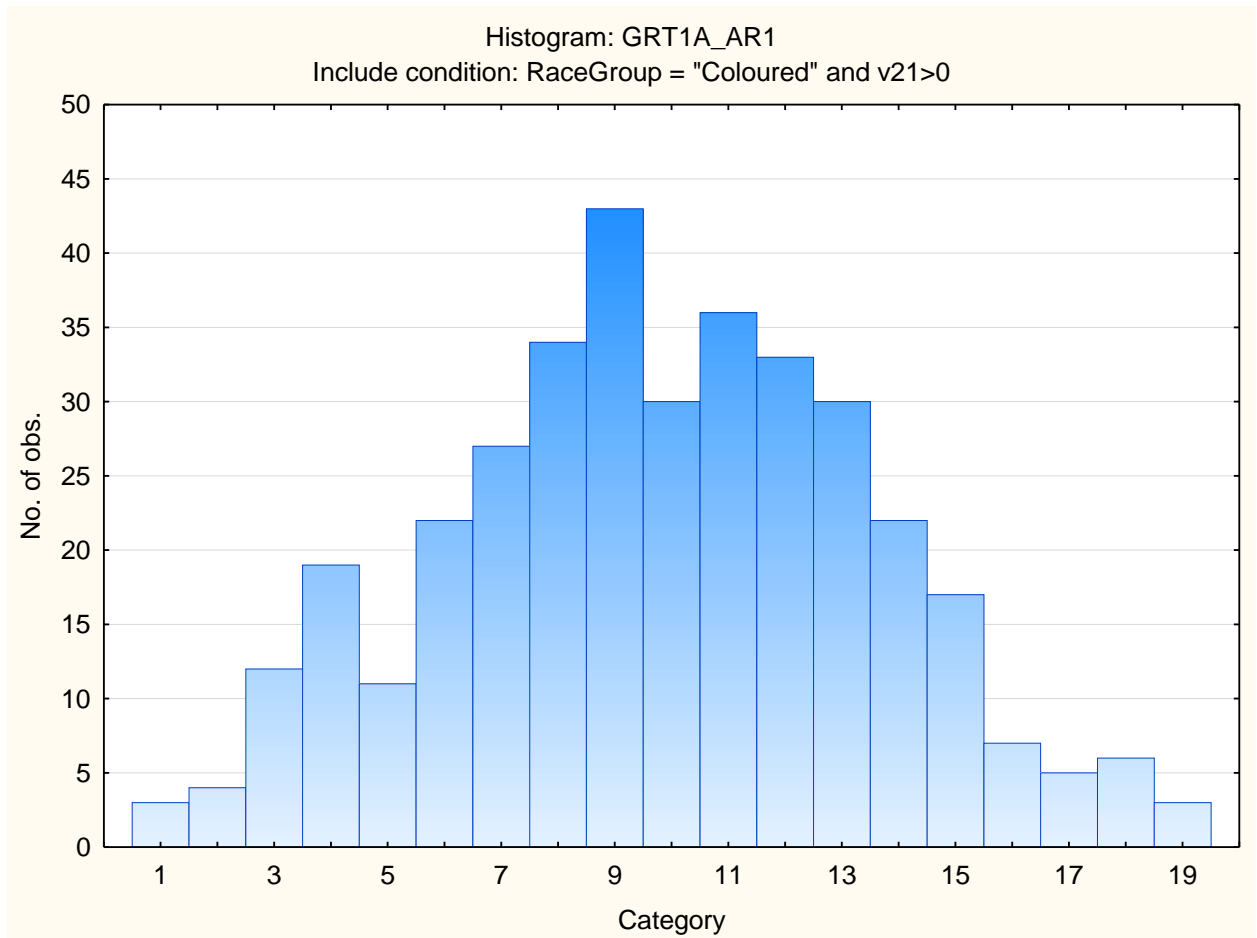
Graduate Numerical Reasoning



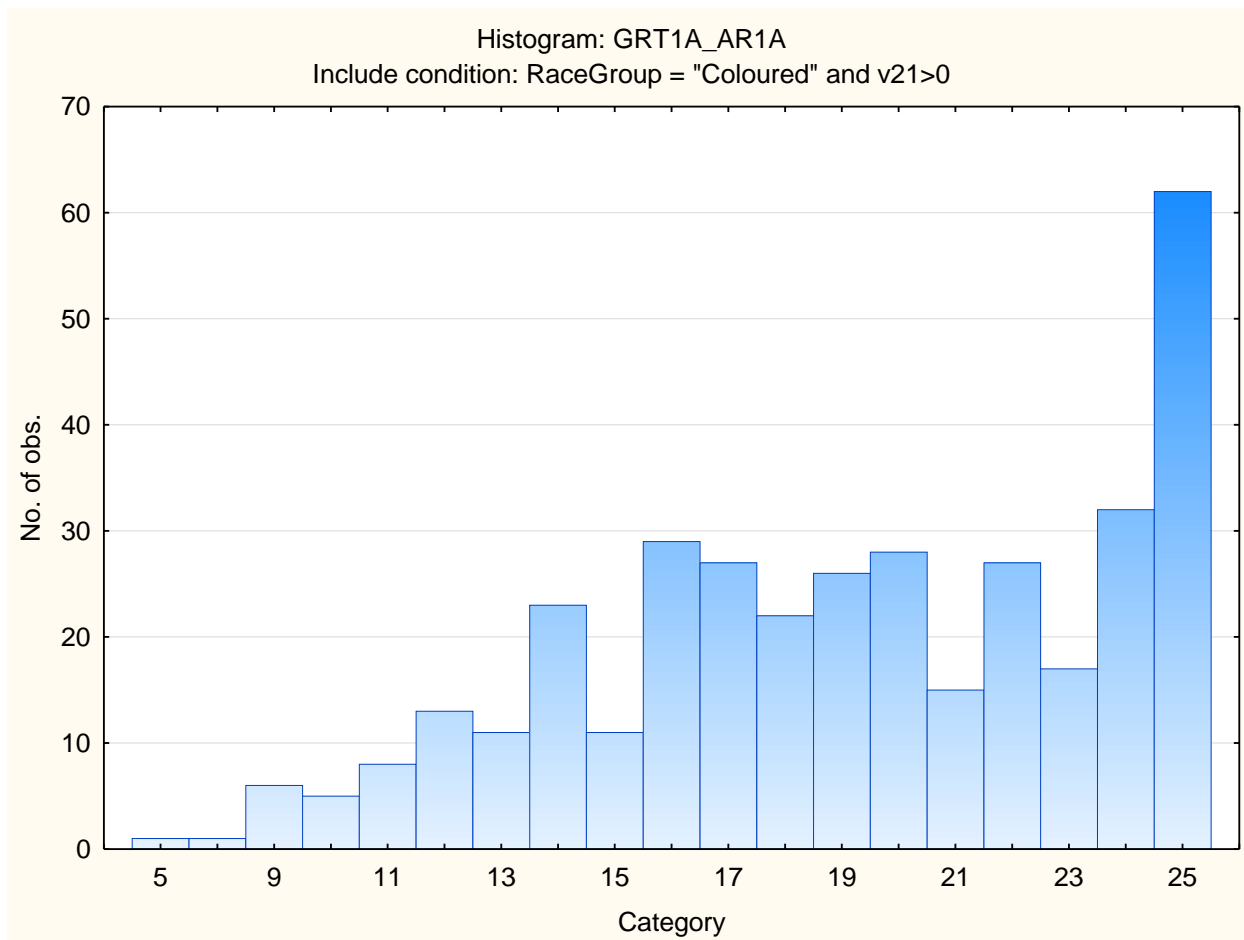
Graduate Numerical Reasoning Items Attempted



Graduate Abstract Reasoning



Graduate Abstract Reasoning items attempted



Stanine table

	S9_1	S9_2	S9_3	S9_4	S9_5	S9_6	S9_7	S9_8	S9_9
Graduate Verbal Reasoning	0-1	2-3	4-5	6-6	7-8	9-10	11-12	13-14	15-20
Graduate Verbal Items Attempted	5-8	9-11	12-14	15-17	18-20	21-23	24-26	27-29	30-30
Graduate Numerical Reasoning	1-0	1-2	3-4	5-6	7-8	9-11	12-13	14-15	16-23
Graduate Numerical Items Attempted	4-7	8-9	10-12	13-14	15-17	18-20	21-22	23-25	
Graduate Abstract Reasoning	1-3	4-5	6-6	7-8	9-10	11-12	13-14	15-16	17-19
Graduate Abstract Items Attempted	5-11	12-13	14-15	16-18	19-20	21-22	23-24	25-25	