

# Values and Motives Inventory (VMI)

## Reliability: SA Afrikaans Speakers, Updated 2016

---

### Sample Composition

Compiled from raw data on 295 respondents submitted by various clients as well as collected by Psytech SA and collaborators, via GeneSys for Windows, in the period up to November 2013.

### Biographical Composition

Category	Frequency table: Sex			
	Count	Cumulative Count	Percent	Cumulative Percent
M	204	204	69,15254	69,1525
F	91	295	30,84746	100,0000
Missing	0	295	0,00000	100,0000

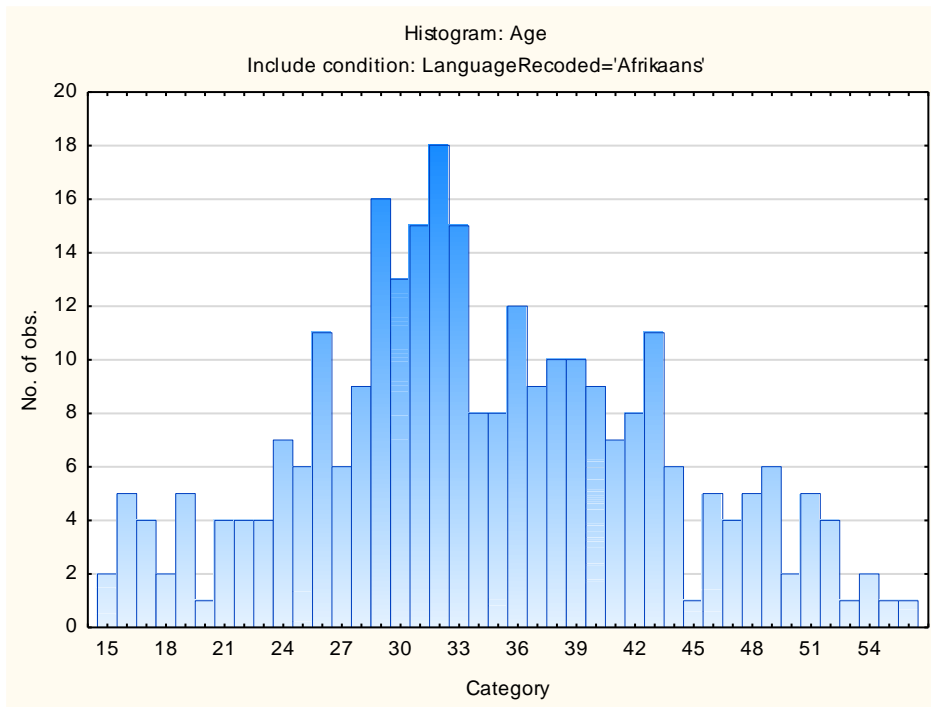
Category	Frequency table: Education			
	Count	Cumulative Count	Percent	Cumulative Percent
Grade 12	116	116	39,32203	39,3220
Tertiary	41	157	13,89831	53,2203
Tertiary Certificate/Trade	45	202	15,25424	68,4746
Post Graduate	43	245	14,57627	83,0508
< Matric	23	268	7,79661	90,8475
Missing	27	295	9,15254	100,0000

Category	Frequency table: Language			
	Count	Cumulative Count	Percent	Cumulative Percent
Afrikaans	295	295	100,0000	100,0000
Missing	0	295	0,0000	100,0000

Category	Frequency table: Language Group			
	Count	Cumulative Count	Percent	Cumulative Percent
Afrikaans	295	295	100,0000	100,0000
Missing	0	295	0,0000	100,0000

Category	Frequency table: Race			
	Count	Cumulative Count	Percent	Cumulative Percent
Coloured	31	31	10,50847	10,5085
European	250	281	84,74576	95,2542
African	7	288	2,37288	97,6271
Missing	7	295	2,37288	100,0000

Variable	Descriptive Statistics: Age					
	Mean	Std.Dev	Minimum	Maximum	N	No.cases Missing
Age	34,21631	9,096909	15,00000	64,00000	282	13



## Internal Consistency Reliability On 15FQ+ Scales

<b>Scale</b>	<b>Scale description</b>	<b>Cronbach Alpha</b>
<b>TRAD</b>	Traditional	0,46
<b>MORA</b>	Moral	0,62
<b>INDE</b>	Independence	0,44
<b>ETHI</b>	Ethical	0,43
<b>ALTR</b>	Altruism	0,77
<b>AFFI</b>	Affiliation	0,68
<b>AFFE</b>	Affection	0,73
<b>NACH</b>	Achievement	0,55
<b>FINS</b>	Financial	0,75
<b>SAFE</b>	Security	0,79
<b>AEST</b>	Aesthetic	0,87
<b>SOCD</b>	Social Desirability	0,60