

# Fifteen Factor Questionnaire (15FQ+)

## Reliability: SA Aggregate Population, Updated 2016

---

### Composition of the Sample

Compiled from raw data on 20374 respondents submitted by various clients as well as collected by Psytech SA and collaborators, via GeneSys for Windows, in the period up to June 2015.

### Gender Composition of the Sample

Category	Frequency table: Sex			
	Count	Cumulative Count	Percent	Cumulative Percent
F	7866	7866	38,60803	38,6080
M	12279	20145	60,26799	98,8760
U	229	20374	1,12398	100,0000
Missing	0	20374	0,00000	100,0000

### Educational Composition of the Sample

Category	Frequency table: Education			
	Count	Cumulative Count	Percent	Cumulative Percent
Grade 12	4406	4406	21,62560	21,6256
Tertiary	5926	10332	29,08609	50,7117
Post Graduate	2169	12501	10,64592	61,3576
< Matric	406	12907	1,99274	63,3503
Unknown	103	13010	0,50555	63,8559
Other	9	13019	0,04417	63,9001
Missing	7355	20374	36,09993	100,0000

It should be noted that a large number of respondents did not give their educational level. Of the remainder, the majority had a tertiary level of education.

## Language Composition of the Sample

Category	Frequency table: Language			
	Count	Cumulative Count	Percent	Cumulative Percent
isiZulu	1426	1426	6,99912	6,9991
Afrikaans	2999	4425	14,71974	21,7189
Setswana	660	5085	3,23942	24,9583
English	5473	10558	26,86267	51,8209
Sesotho	664	11222	3,25906	55,0800
isiXhosa	886	12108	4,34868	59,4287
Sepedi	590	12698	2,89585	62,3245
Xitsonga	192	12890	0,94238	63,2669
Other	273	13163	1,33994	64,6069
Unknown	209	13372	1,02582	65,6327
Tshivenda	149	13521	0,73132	66,3640
siSwati	112	13633	0,54972	66,9137
isiNdebele	55	13688	0,26995	67,1837
Missing	6686	20374	32,81633	100,0000

It should be noted that, for a large number of persons, no language information was available.

## Language Group Composition of the Sample

Category	Frequency table: Language Group			
	Count	Cumulative Count	Percent	Cumulative Percent
Indigenous	4734	4734	23,23550	23,2355
Afrikaans	2999	7733	14,71974	37,9552
English	5473	13206	26,86267	64,8179
Missing	7168	20374	35,18209	100,0000

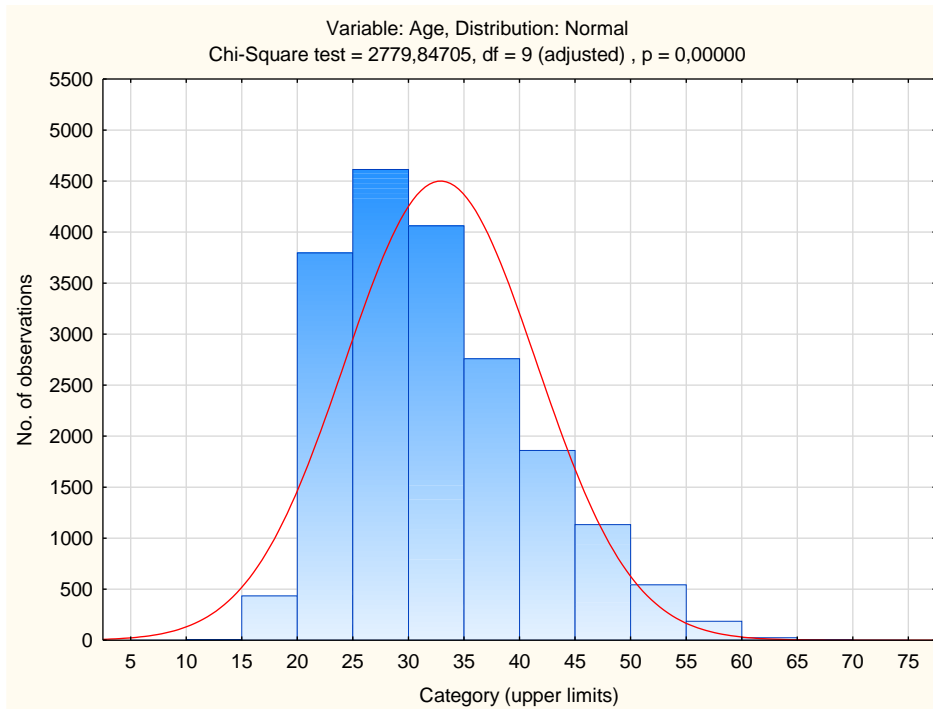
## Racial Composition of the Sample

Category	Frequency table: Race			
	Count	Cumulative Count	Percent	Cumulative Percent
African	5783	5783	28,38422	28,3842
European	5365	11148	26,33258	54,7168
Coloured	1125	12273	5,52174	60,2385
Asian	1762	14035	8,64828	68,8868
Indian	44	14079	0,21596	69,1028
Other	118	14197	0,57917	69,6819
Unknown	28	14225	0,13743	69,8194
Chinese	3	14228	0,01472	69,8341
Missing	6146	20374	30,16590	100,0000

It should be noted that a large number of respondents did not provide information on race.

## Age Composition and Distribution of the Sample

Variable	Descriptive Statistics: Age					
	Mean	Std.Dev	Minimum	Maximum	N	No.cases Missing
Age	32,90089	8,609117	15,00000	68,00000	19423	954



It is clear from the frequency distribution that most of the respondents were in their twenties and early thirties.

## *Internal Consistency Reliability on 15FQ+ Scales*

<b>Scale</b>	<b>Scale description</b>	<b>Cronbach Alpha</b>
<b>fA</b>	Distant Aloof – Empathic	0,64
<b>B</b>	Intellectance	0,70
<b>fC</b>	Affected by Feelings – Emotionally Stable	0,74
<b>fE</b>	Accommodating – Dominant	0,66
<b>fF</b>	Sober Serious – Enthusiastic	0,75
<b>fG</b>	Expedient – Conscientious	0,74
<b>fH</b>	Retiring – Socially-bold	0,80
<b>fI</b>	Hard-headed – Tender-minded	0,69
<b>fL</b>	Trusting – Suspicious	0,72
<b>fM</b>	Concrete – Abstract	0,57
<b>fN</b>	Direct – Restrained	0,71
<b>fO</b>	Confident – Self-doubting	0,71
<b>fQ1</b>	Conventional – Radical	0,65
<b>fQ2</b>	Group-orientated – Self-sufficient	0,71
<b>fQ3</b>	Informal – Self-disciplined	0,60
<b>fQ4</b>	Composed – Tense-driven	0,74

Personality measures should always be interpreted with caution. In cases where the reliability is below 0.65, the results should be interpreted with extreme caution by using additional information for this purpose. The interview prompts report can assist the user in obtaining additional information for the purpose of triangulation, directly from the respondent.