

# Values and Motives Inventory (VMI)

## Reliability: SA Sesotho Speakers, Updated 2016

---

### Sample Composition

Compiled from raw data on 101 respondents submitted by various clients as well as collected by Psytech SA and collaborators, via GeneSys for Windows, in the period up to November 2013.

### Biographical Composition

Category	Frequency table: Sex			
	Count	Cumulative Count	Percent	Cumulative Percent
M	51	51	50,49505	50,4950
F	50	101	49,50495	100,0000
Missing	0	101	0,00000	100,0000

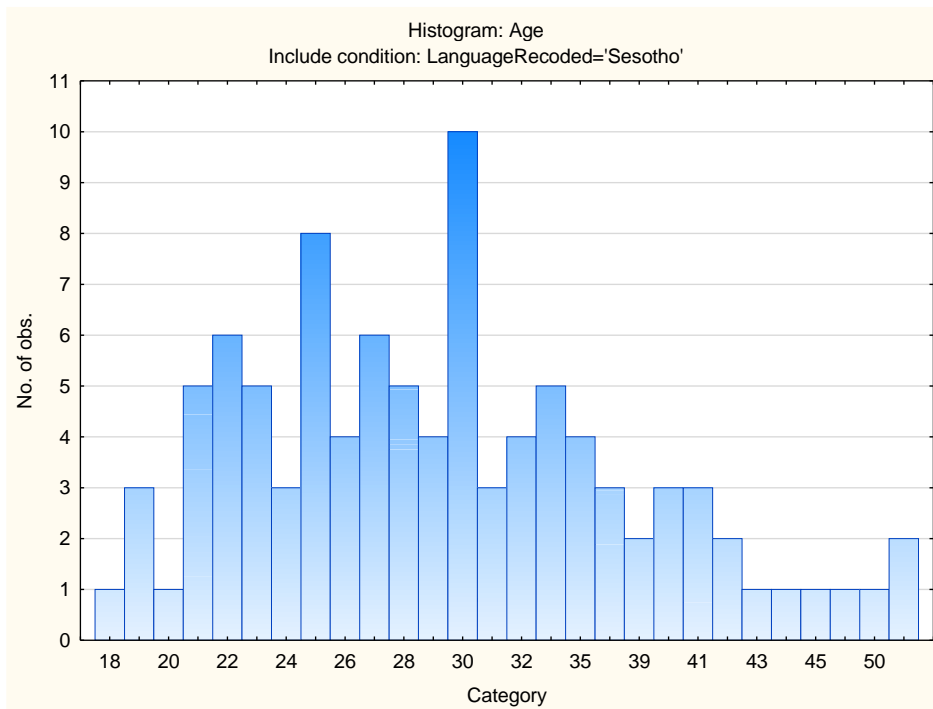
Category	Frequency table: Education			
	Count	Cumulative Count	Percent	Cumulative Percent
Grade 12	34	34	33,66337	33,6634
Tertiary	22	56	21,78218	55,4455
Tertiary Certificate/Trade	18	74	17,82178	73,2673
Post Graduate	24	98	23,76238	97,0297
Missing	3	101	2,97030	100,0000

Category	Frequency table: Language			
	Count	Cumulative Count	Percent	Cumulative Percent
Sesotho	101	101	100,0000	100,0000
Missing	0	101	0,0000	100,0000

Category	Frequency table: Language Group			
	Count	Cumulative Count	Percent	Cumulative Percent
Indigenous	101	101	100,0000	100,0000
Missing	0	101	0,0000	100,0000

Category	Frequency table: Race			
	Count	Cumulative Count	Percent	Cumulative Percent
European	1	1	0,99010	0,9901
African	96	97	95,04950	96,0396
Missing	4	101	3,96040	100,0000

Variable	Descriptive Statistics: Age					
	Mean	Std.Dev	Minimum	Maximum	N	No.cases Missing
Age	30,16495	8,068303	18,00000	57,00000	97	4



## Internal consistency reliability on 15FQ+ scales

<b>Scale</b>	<b>Scale description</b>	<b>Cronbach Alpha</b>
<b>TRAD</b>	Traditional	0,19
<b>MORA</b>	Moral	0,22
<b>INDE</b>	Independence	0,20
<b>ETHI</b>	Ethical	0,12
<b>ALTR</b>	Altruism	0,06
<b>AFFI</b>	Affiliation	0,58
<b>AFFE</b>	Affection	0,68
<b>NACH</b>	Achievement	0,35
<b>FINS</b>	Financial	0,71
<b>SAFE</b>	Security	0,75
<b>AEST</b>	Aesthetic	0,71
<b>SOCD</b>	Social Desirability	0,70