

# Critical Reasoning Test (CRTB2)

## Reliability: South Africans, English Language Group, Updated 2016

---

### Critical Numerical Reasoning Test: Biographical Composition

| Category | Frequency table: Sex |                  |          |                    |
|----------|----------------------|------------------|----------|--------------------|
|          | Count                | Cumulative Count | Percent  | Cumulative Percent |
| F        | 386                  | 386              | 28,23702 | 28,2370            |
| M        | 973                  | 1359             | 71,17776 | 99,4148            |
| U        | 8                    | 1367             | 0,58522  | 100,0000           |
| Missing  | 0                    | 1367             | 0,00000  | 100,0000           |

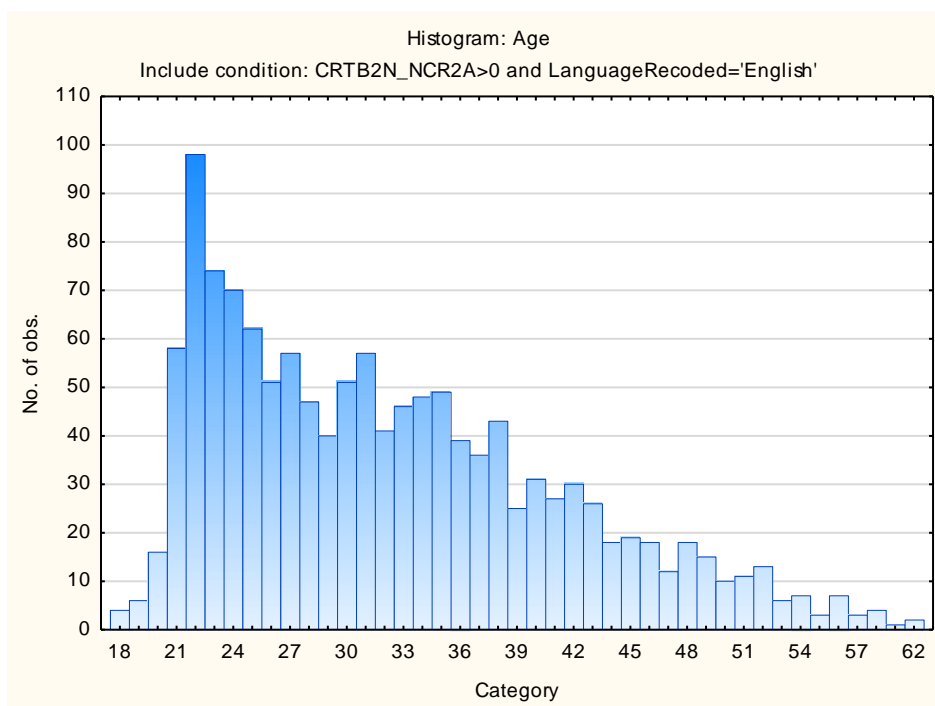
| Category      | Frequency table: Education |                  |          |                    |
|---------------|----------------------------|------------------|----------|--------------------|
|               | Count                      | Cumulative Count | Percent  | Cumulative Percent |
| Tertiary      | 577                        | 577              | 42,20922 | 42,2092            |
| Post Graduate | 287                        | 864              | 20,99488 | 63,2041            |
| Grade 12      | 326                        | 1190             | 23,84784 | 87,0519            |
| < Matric      | 22                         | 1212             | 1,60936  | 88,6613            |
| Missing       | 155                        | 1367             | 11,33870 | 100,0000           |

| Category | Frequency table: Language |                  |          |                    |
|----------|---------------------------|------------------|----------|--------------------|
|          | Count                     | Cumulative Count | Percent  | Cumulative Percent |
| English  | 1367                      | 1367             | 100,0000 | 100,0000           |
| Missing  | 0                         | 1367             | 0,0000   | 100,0000           |

| Category | Frequency table: Race |                  |          |                    |
|----------|-----------------------|------------------|----------|--------------------|
|          | Count                 | Cumulative Count | Percent  | Cumulative Percent |
| African  | 91                    | 91               | 6,65691  | 6,6569             |
| Asian    | 460                   | 551              | 33,65033 | 40,3072            |
| European | 671                   | 1222             | 49,08559 | 89,3928            |

| Category | Frequency table: Race |                  |         |                    |
|----------|-----------------------|------------------|---------|--------------------|
|          | Count                 | Cumulative Count | Percent | Cumulative Percent |
| Coloured | 124                   | 1346             | 9,07096 | 98,4638            |
| Missing  | 21                    | 1367             | 1,53621 | 100,0000           |

| Variable | Descriptive Statistics: Age |          |          |          |      |                  |
|----------|-----------------------------|----------|----------|----------|------|------------------|
|          | Mean                        | Std.Dev  | Minimum  | Maximum  | N    | No.cases Missing |
| Age      | 32,26482                    | 9,056785 | 18,00000 | 62,00000 | 1299 | 68               |



## Critical Verbal Reasoning Test: Biographical Composition

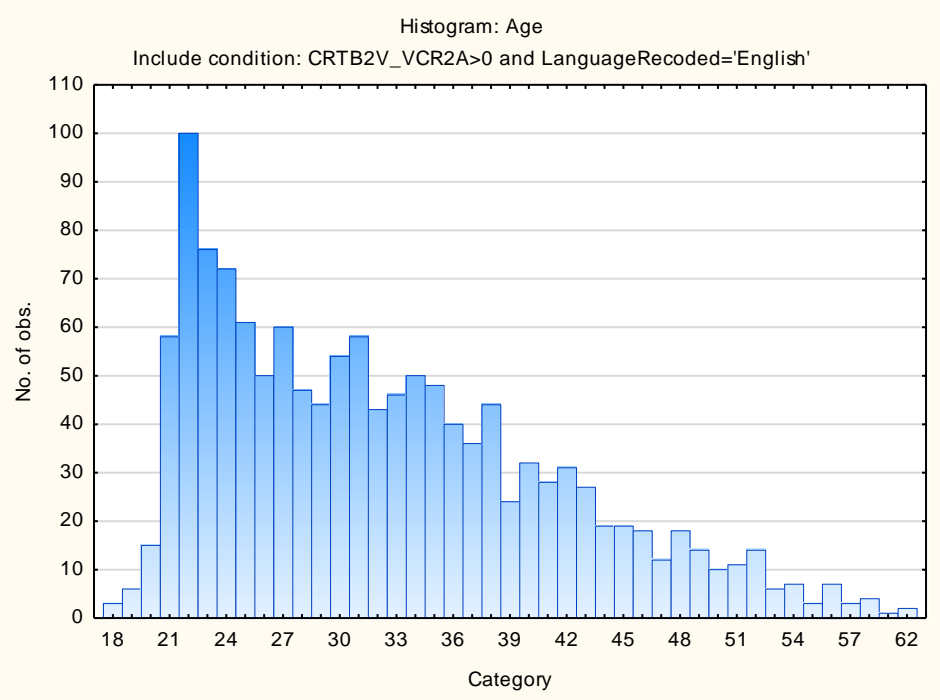
| Category | Frequency table: Sex |                  |          |                    |
|----------|----------------------|------------------|----------|--------------------|
|          | Count                | Cumulative Count | Percent  | Cumulative Percent |
| F        | 396                  | 396              | 28,50972 | 28,5097            |
| M        | 985                  | 1381             | 70,91433 | 99,4240            |
| U        | 8                    | 1389             | 0,57595  | 100,0000           |
| Missing  | 0                    | 1389             | 0,00000  | 100,0000           |

| Category      | Frequency table: Education |                  |          |                    |
|---------------|----------------------------|------------------|----------|--------------------|
|               | Count                      | Cumulative Count | Percent  | Cumulative Percent |
| Tertiary      | 582                        | 582              | 41,90065 | 41,9006            |
| Post Graduate | 303                        | 885              | 21,81425 | 63,7149            |
| Grade 12      | 329                        | 1214             | 23,68611 | 87,4010            |
| < Matric      | 21                         | 1235             | 1,51188  | 88,9129            |
| Missing       | 154                        | 1389             | 11,08711 | 100,0000           |

| Category | Frequency table: Language |                  |          |                    |
|----------|---------------------------|------------------|----------|--------------------|
|          | Count                     | Cumulative Count | Percent  | Cumulative Percent |
| English  | 1389                      | 1389             | 100,0000 | 100,0000           |
| Missing  | 0                         | 1389             | 0,0000   | 100,0000           |

| Category | Frequency table: Race |                  |          |                    |
|----------|-----------------------|------------------|----------|--------------------|
|          | Count                 | Cumulative Count | Percent  | Cumulative Percent |
| African  | 91                    | 91               | 6,55148  | 6,5515             |
| Asian    | 466                   | 557              | 33,54932 | 40,1008            |
| European | 689                   | 1246             | 49,60403 | 89,7048            |
| Coloured | 123                   | 1369             | 8,85529  | 98,5601            |
| Missing  | 20                    | 1389             | 1,43988  | 100,0000           |

| Variable | Descriptive Statistics: Age |          |          |          |      |                  |
|----------|-----------------------------|----------|----------|----------|------|------------------|
|          | Mean                        | Std.Dev  | Minimum  | Maximum  | N    | No.cases Missing |
| Age      | 32,26646                    | 9,015063 | 18,00000 | 62,00000 | 1321 | 68               |



## Internal Consistency Reliabilities for Critical Reasoning Test Battery Subtests

| <b>Subtest</b>                    | <b>Cronbach Coefficient Alpha</b> |
|-----------------------------------|-----------------------------------|
| Critical Numerical Reasoning Test | 0,80                              |
| Critical Verbal Reasoning Test    | 0,86                              |

Results of lower than 0.75 are possibly related to respondents guessing the answers to items which they may not know. Results should therefore be interpreted with caution. Do not rely on these tests in isolation, but consider the results as part of a holistic assessment, which incorporate additional sources of information.