

General Reasoning Test Battery

Reliability: South Africans, Race Asian, updated 2011

Sample composition

The sample consisted of South Africans belonging to the Asian race group, who were tested by Psytech South Africa and collaborators during the period leading up to February 2011. Since not all the respondents completed the full General Reasoning Test Battery, the sample compositions for the subtests are reported separately.

Sample composition: General Verbal Reasoning Test

Category	Frequency table: Sex			
	Count	Cumulative Count	Percent	Cumulative Percent
F	294	294	32.99663	32.9966
M	596	890	66.89113	99.8878
Missing	1	891	0.11223	100.0000

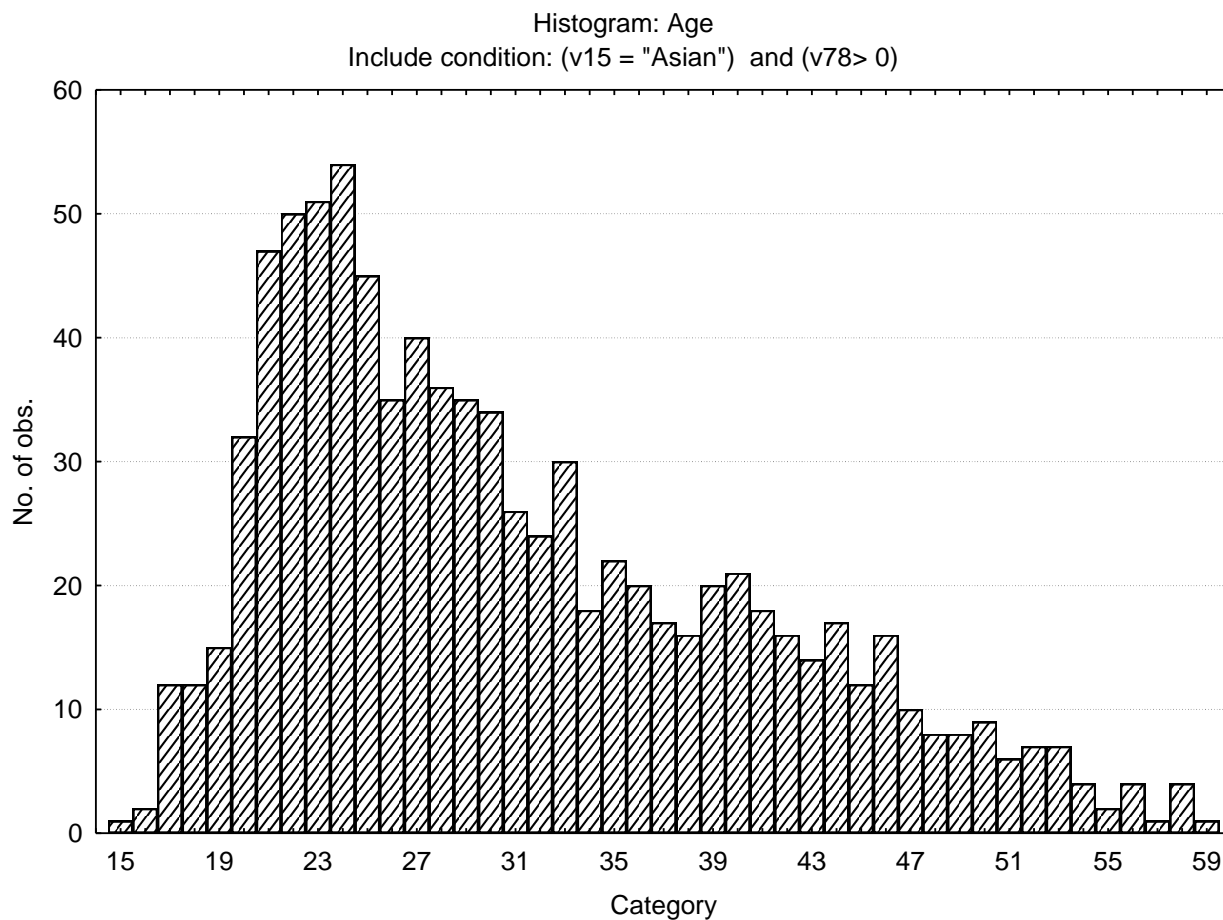
Category	Frequency table: Education			
	Count	Cumulative Count	Percent	Cumulative Percent
Technikon	138	138	15.48822	15.4882
Grade 12	333	471	37.37374	52.8620
University Diploma	25	496	2.80584	55.6678
Degree	95	591	10.66218	66.3300
Vocational Training	42	633	4.71380	71.0438
Grade 10 or 11	66	699	7.40741	78.4512
Grade 8	5	704	0.56117	79.0123
Grade 9	5	709	0.56117	79.5735
Post Graduate	68	777	7.63187	87.2054
Missing	114	891	12.79461	100.0000

Category	Frequency table: Language			
	Count	Cumulative Count	Percent	Cumulative Percent
isiZulu	8	8	0.89787	0.8979
English	806	814	90.46016	91.3580
Afrikaans	1	815	0.11223	91.4703
Setswana	2	817	0.22447	91.6947
Sepedi	1	818	0.11223	91.8070
Tshivenda	1	819	0.11223	91.9192
isiXhosa	2	821	0.22447	92.1437
Missing	70	891	7.85634	100.0000

Category	Frequency table: Language Group			
	Count	Cumulative Count	Percent	Cumulative Percent
English	806	806	90.46016	90.4602
Afrikaans	1	807	0.11223	90.5724
Indigenous	15	822	1.68350	92.2559
Missing	69	891	7.74411	100.0000

Category	Frequency table: Race			
	Count	Cumulative Count	Percent	Cumulative Percent
Asian	891	891	100.0000	100.0000
Missing	0	891	0.0000	100.0000

Variable	Descriptive Statistics: Age					
	Mean	Std.Dev	Minimum	Maximum	N	No.cases Missing
Age	31.05802	9.500752	15.00000	59.00000	879	12



Sample composition: General Numerical Reasoning Test

Category	Frequency table: Sex			
	Count	Cumulative Count	Percent	Cumulative Percent
F	293	293	32.99550	32.9955
M	594	887	66.89189	99.8874
Missing	1	888	0.11261	100.0000

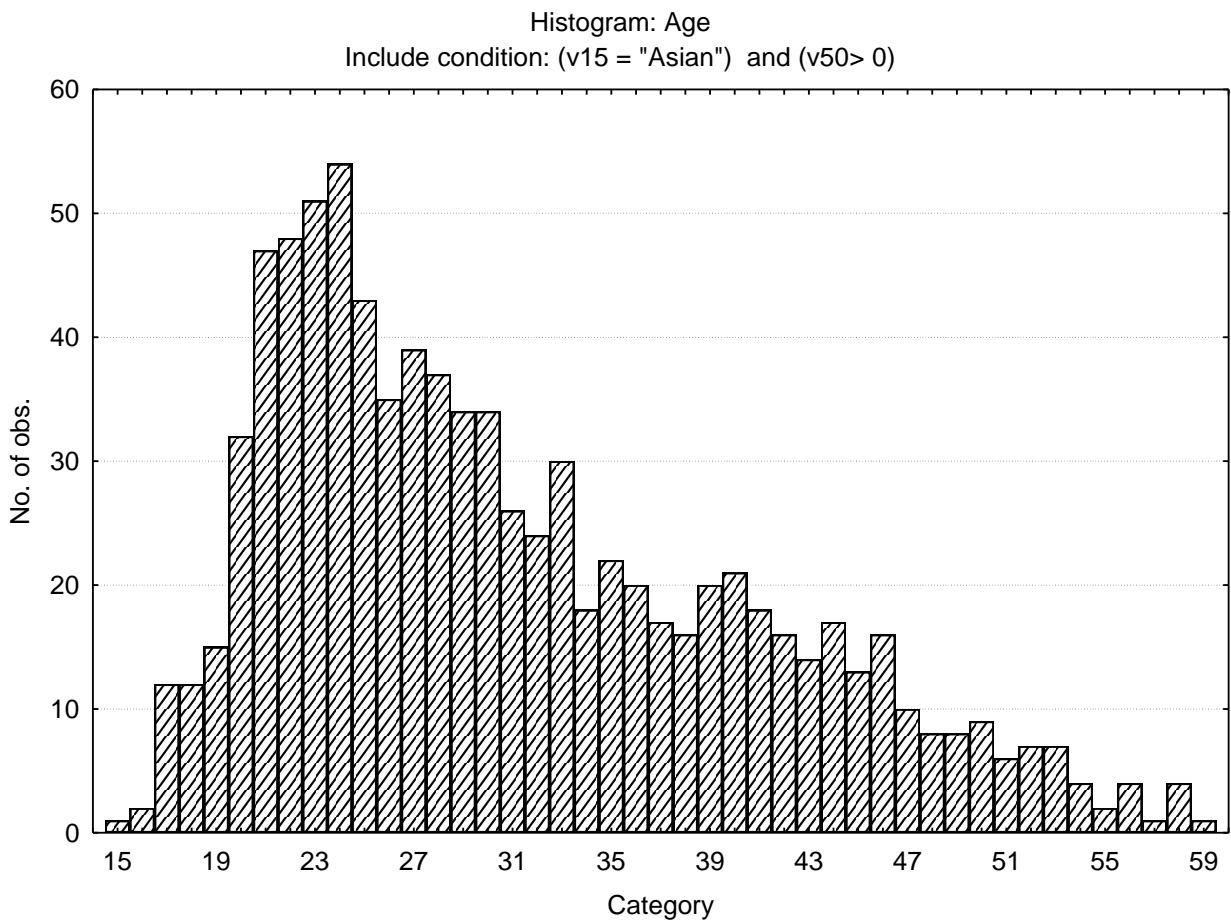
Category	Frequency table: Education			
	Count	Cumulative Count	Percent	Cumulative Percent
Technikon	139	139	15.65315	15.6532
Grade 12	335	474	37.72523	53.3784
University Diploma	25	499	2.81532	56.1937
Degree	91	590	10.24775	66.4414
Vocational Training	42	632	4.72973	71.1712
Grade 10 or 11	66	698	7.43243	78.6036
Grade 8	5	703	0.56306	79.1667
Grade 9	5	708	0.56306	79.7297
Post Graduate	65	773	7.31982	87.0495
Missing	115	888	12.95045	100.0000

Category	Frequency table: Language			
	Count	Cumulative Count	Percent	Cumulative Percent
isiZulu	8	8	0.90090	0.9009
English	801	809	90.20270	91.1036
Afrikaans	1	810	0.11261	91.2162
Setswana	2	812	0.22523	91.4414
Sepedi	1	813	0.11261	91.5541
Tshivenda	1	814	0.11261	91.6667
isiXhosa	2	816	0.22523	91.8919
Missing	72	888	8.10811	100.0000

Category	Frequency table: Language Group			
	Count	Cumulative Count	Percent	Cumulative Percent
English	801	801	90.20270	90.2027
Afrikaans	1	802	0.11261	90.3153
Indigenous	15	817	1.68919	92.0045
Missing	71	888	7.99550	100.0000

Category	Frequency table: Race			
	Count	Cumulative Count	Percent	Cumulative Percent
Asian	888	888	100.0000	100.0000
Missing	0	888	0.0000	100.0000

Variable	Descriptive Statistics: Age					
	Mean	Std.Dev	Minimum	Maximum	N	No.cases Missing
Age	31.11200	9.519042	15.00000	59.00000	875	13



Sample composition: General Abstract Reasoning Test

Category	Frequency table: Sex			
	Count	Cumulative Count	Percent	Cumulative Percent
F	330	330	28.27763	28.2776
M	835	1165	71.55099	99.8286
Missing	2	1167	0.17138	100.0000

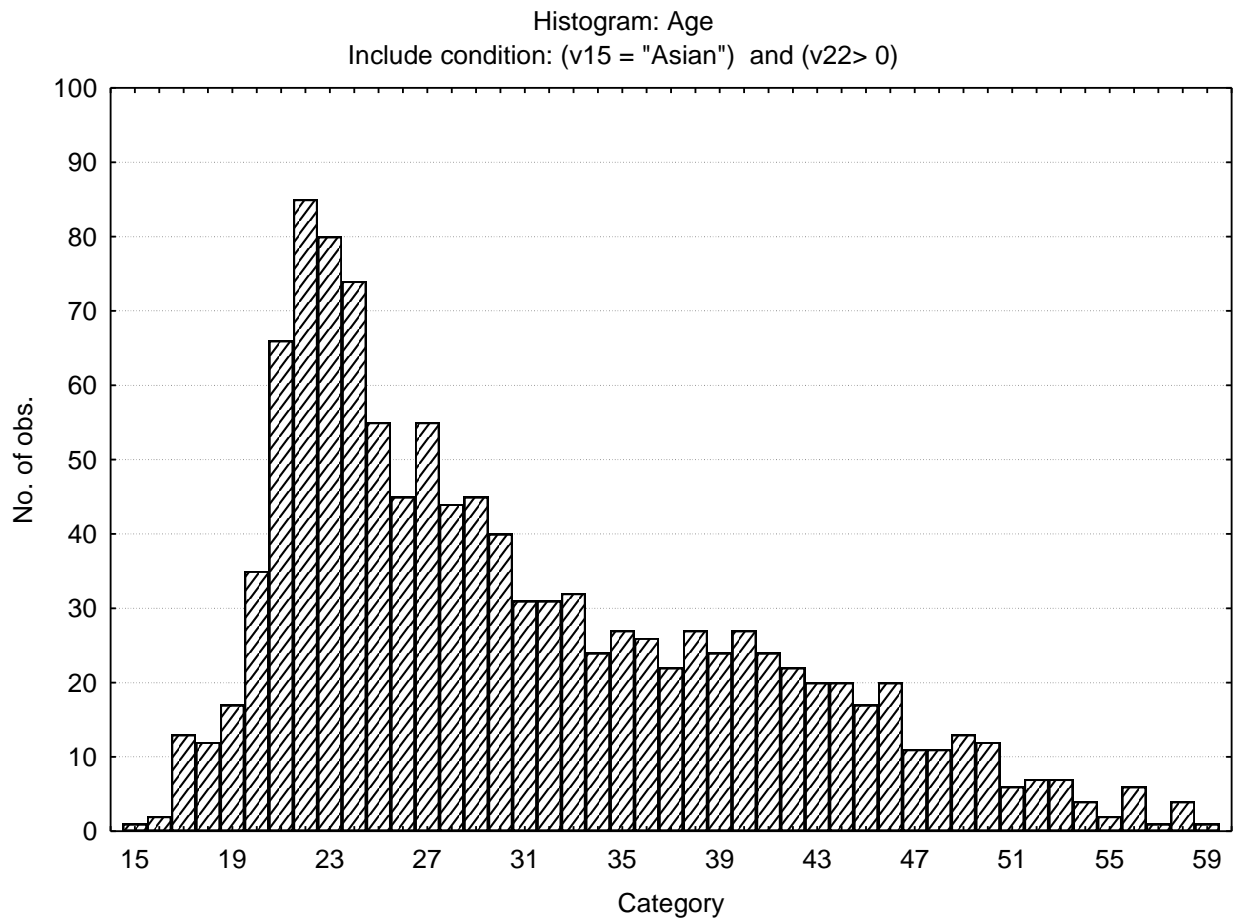
Category	Frequency table: Education			
	Count	Cumulative Count	Percent	Cumulative Percent
Technikon	186	186	15.93830	15.9383
Grade 12	396	582	33.93316	49.8715
University Diploma	32	614	2.74207	52.6135
Degree	158	772	13.53899	66.1525
Vocational Training	43	815	3.68466	69.8372
Grade 10 or 11	70	885	5.99829	75.8355
Grade 8	5	890	0.42845	76.2639
Grade 9	5	895	0.42845	76.6924
Post Graduate	126	1021	10.79692	87.4893
Missing	146	1167	12.51071	100.0000

Category	Frequency table: Language			
	Count	Cumulative Count	Percent	Cumulative Percent
isiZulu	10	10	0.85690	0.8569
English	1076	1086	92.20223	93.0591
Afrikaans	1	1087	0.08569	93.1448
Setswana	2	1089	0.17138	93.3162
Sesotho	1	1090	0.08569	93.4019
Sepedi	1	1091	0.08569	93.4876
Tshivenda	1	1092	0.08569	93.5733
siSwati	1	1093	0.08569	93.6590
isiXhosa	3	1096	0.25707	93.9160
Missing	71	1167	6.08398	100.0000

Category	Frequency table: Language Group			
	Count	Cumulative Count	Percent	Cumulative Percent
English	1076	1076	92.20223	92.2022
Afrikaans	1	1077	0.08569	92.2879
Indigenous	20	1097	1.71380	94.0017
Missing	70	1167	5.99829	100.0000

Category	Frequency table: Race			
	Count	Cumulative Count	Percent	Cumulative Percent
Asian	1167	1167	100.0000	100.0000
Missing	0	1167	0.0000	100.0000

Variable	Descriptive Statistics: Age					
	Mean	Std.Dev	Minimum	Maximum	N	No.cases Missing
Age	30.81359	9.337894	15.00000	59.00000	1148	19



Internal consistency reliabilities for General Reasoning Test Battery subtests

	Cronbach Coefficient Alpha
General Verbal Reasoning Test	.81
General Numerical Reasoning Test	.84
General Abstract Reasoning Test	.82