

# Fifteen Factor Questionnaire (15FQ+)

## Reliability: SA Sepedi Speakers, Updated 2016

---

### Composition of the sample

The sample consisted of 590 Sepedi speaking South Africans tested by Psytech SA and collaborators, via GeneSys for Windows, in the period up to June 2015.

### Gender composition of the sample

Category	Frequency table: Sex			
	Count	Cumulative Count	Percent	Cumulative Percent
F	258	258	43,72881	43,7288
M	330	588	55,93220	99,6610
U	2	590	0,33898	100,0000
Missing	0	590	0,00000	100,0000

### Educational Composition of the Sample

Category	Frequency table: Education			
	Count	Cumulative Count	Percent	Cumulative Percent
Grade 12	224	224	37,96610	37,9661
Tertiary	229	453	38,81356	76,7797
Post Graduate	54	507	9,15254	85,9322
< Matric	33	540	5,59322	91,5254
Unknown	15	555	2,54237	94,0678
Other	2	557	0,33898	94,4068
Missing	33	590	5,59322	100,0000

## Language composition of the sample

Category	Frequency table: Language			
	Count	Cumulative Count	Percent	Cumulative Percent
Sepedi	590	590	100,0000	100,0000
Missing	0	590	0,0000	100,0000

## Language Group Composition of the Sample

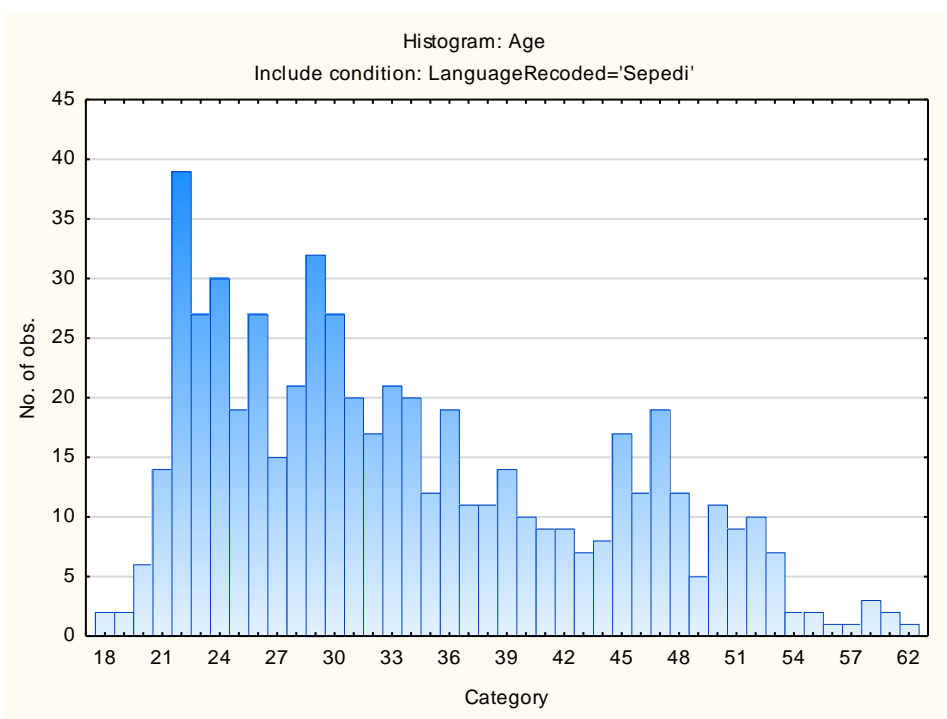
Category	Frequency table: Language Group			
	Count	Cumulative Count	Percent	Cumulative Percent
Indigenous	590	590	100,0000	100,0000
Missing	0	590	0,0000	100,0000

## Racial composition of the sample

Category	Frequency table: Race			
	Count	Cumulative Count	Percent	Cumulative Percent
African	570	570	96,61017	96,6102
European	6	576	1,01695	97,6271
Coloured	5	581	0,84746	98,4746
Asian	4	585	0,67797	99,1525
Unknown	5	590	0,84746	100,0000
Missing	0	590	0,00000	100,0000

## Age Composition and Distribution of the Sample

Variable	Descriptive Statistics: Age					
	Mean	Std.Dev	Minimum	Maximum	N	No.cases Missing
Age	33,78863	9,819714	18,00000	62,00000	563	27



## *Internal consistency reliability on 15FQ+ scales*

<b>Scale</b>	<b>Scale description</b>	<b>Cronbach Alpha</b>
<b>fA</b>	Distant Aloof – Empathic	0,52
<b>B</b>	Intellectance	0,68
<b>fC</b>	Affected by Feelings – Emotionally Stable	0,73
<b>fE</b>	Accommodating – Dominant	0,53
<b>fF</b>	Sober Serious – Enthusiastic	0,72
<b>fG</b>	Expedient – Conscientious	0,58
<b>fH</b>	Retiring – Socially-bold	0,74
<b>fI</b>	Hard-headed – Tender-minded	0,54
<b>fL</b>	Trusting – Suspicious	0,64
<b>fM</b>	Concrete – Abstract	0,28
<b>fN</b>	Direct – Restrained	0,54
<b>fO</b>	Confident – Self-doubting	0,60
<b>fQ1</b>	Conventional – Radical	0,39
<b>fQ2</b>	Group-orientated – Self-sufficient	0,66
<b>fQ3</b>	Informal – Self-disciplined	0,36
<b>fQ4</b>	Composed – Tense-driven	0,58

Personality measures should always be interpreted with caution. In cases where the reliability is below 0.65, the results should be interpreted with extreme caution by using additional information for this purpose. The interview prompts report can assist the user in obtaining additional information for the purpose of triangulation, directly from the respondent.