

Fifteen Factor Questionnaire (15FQ+)

Reliability: SA Sesotho Speakers, Updated 2016

Composition of the sample

The sample consisted of 664 Sesotho speaking South Africans tested by Psytech SA and collaborators, via GeneSys for Windows, in the period up to June 2015.

Gender composition of the sample

Category	Frequency table: Sex			
	Count	Cumulative Count	Percent	Cumulative Percent
F	262	262	39,45783	39,4578
M	401	663	60,39157	99,8494
U	1	664	0,15060	100,0000
Missing	0	664	0,00000	100,0000

Educational Composition of the Sample

Category	Frequency table: Education			
	Count	Cumulative Count	Percent	Cumulative Percent
Grade 12	170	170	25,60241	25,6024
Tertiary	344	514	51,80723	77,4096
Post Graduate	99	613	14,90964	92,3193
< Matric	13	626	1,95783	94,2771
Unknown	2	628	0,30120	94,5783
Other	1	629	0,15060	94,7289
Missing	35	664	5,27108	100,0000

Language composition of the sample

Category	Frequency table: Language			
	Count	Cumulative Count	Percent	Cumulative Percent
Sesotho	664	664	100,0000	100,0000
Missing	0	664	0,0000	100,0000

Language Group Composition of the Sample

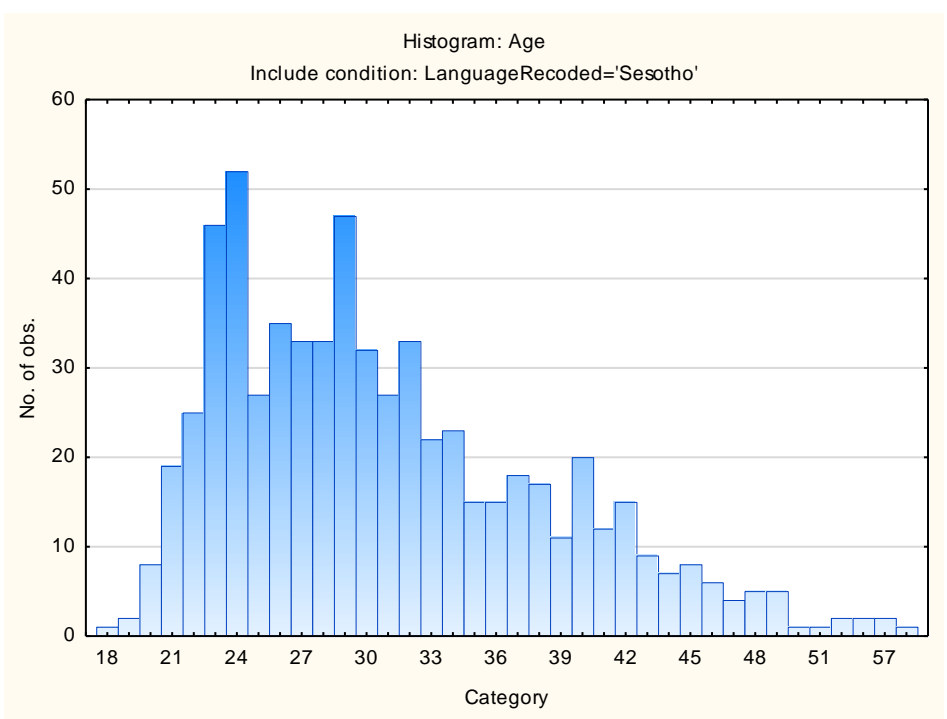
Category	Frequency table: Language Group			
	Count	Cumulative Count	Percent	Cumulative Percent
Indigenous	664	664	100,0000	100,0000
Missing	0	664	0,0000	100,0000

Racial Composition of the Sample

Category	Frequency table: Race			
	Count	Cumulative Count	Percent	Cumulative Percent
African	657	657	98,94578	98,9458
European	2	659	0,30120	99,2470
Coloured	1	660	0,15060	99,3976
Missing	4	664	0,60241	100,0000

Age Composition and Distribution of the Sample

Variable	Descriptive Statistics: Age					
	Mean	Std.Dev	Minimum	Maximum	N	No.cases Missing
Age	30,90796	7,477212	18,00000	60,00000	641	23



Internal consistency reliability on 15FQ+ scales

Scale	Scale description	Cronbach Alpha
fA	Distant Aloof – Empathic	0,43
B	Intellectance	0,66
fC	Affected by Feelings – Emotionally Stable	0,74
fE	Accommodating – Dominant	0,58
fF	Sober Serious – Enthusiastic	0,72
fG	Expedient – Conscientious	0,71
fH	Retiring – Socially-bold	0,74
fI	Hard-headed – Tender-minded	0,63
fL	Trusting – Suspicious	0,64
fM	Concrete – Abstract	0,44
fN	Direct – Restrained	0,58
fO	Confident – Self-doubting	0,66
fQ1	Conventional – Radical	0,52
fQ2	Group-orientated – Self-sufficient	0,61
fQ3	Informal – Self-disciplined	0,53
fQ4	Composed – Tense-driven	0,56

Personality measures should always be interpreted with caution. In cases where the reliability is below 0.65, the results should be interpreted with extreme caution by using additional information for this purpose. The interview prompts report can assist the user in obtaining additional information for the purpose of triangulation, directly from the respondent.