

Fifteen Factor Questionnaire (15FQ+)

Reliability: SA siSwati Speakers, Updated 2016

Composition of the sample

The sample consisted of 112 siSwati speaking South Africans tested by Psytech SA and collaborators, via GeneSys for Windows, in the period up to June 2015.

Gender composition of the sample

Category	Frequency table: Sex			
	Count	Cumulative Count	Percent	Cumulative Percent
F	44	44	39,28571	39,2857
M	68	112	60,71429	100,0000
Missing	0	112	0,00000	100,0000

Educational Composition of the Sample

Category	Frequency table: Education			
	Count	Cumulative Count	Percent	Cumulative Percent
Grade 12	33	33	29,46429	29,4643
Tertiary	56	89	50,00000	79,4643
Post Graduate	18	107	16,07143	95,5357
< Matric	2	109	1,78571	97,3214
Missing	3	112	2,67857	100,0000

Language composition of the sample

Category	Frequency table: Language			
	Count	Cumulative Count	Percent	Cumulative Percent
siSwati	112	112	100,0000	100,0000
Missing	0	112	0,0000	100,0000

Language Group Composition of the Sample

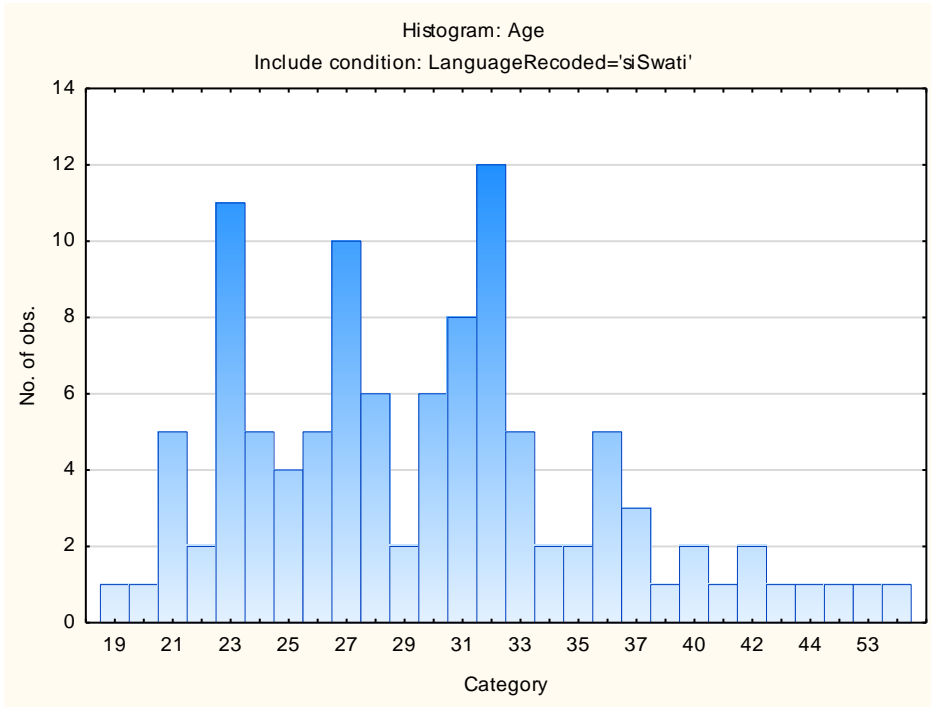
Category	Frequency table: Language Group			
	Count	Cumulative Count	Percent	Cumulative Percent
Indigenous	112	112	100,0000	100,0000
Missing	0	112	0,0000	100,0000

Racial composition of the sample

Category	Frequency table: Race			
	Count	Cumulative Count	Percent	Cumulative Percent
African	109	109	97,32143	97,3214
European	2	111	1,78571	99,1071
Missing	1	112	0,89286	100,0000

Age Composition and Distribution of the Sample

Variable	Descriptive Statistics: Age					
	Mean	Std.Dev	Minimum	Maximum	N	No.cases Missing
Age	29,98113	6,721651	19,00000	55,00000	106	6



Internal consistency reliability on 15FQ+ scales

Scale	Scale description	Cronbach Alpha
fA	Distant Aloof – Empathic	0,65
B	Intellectance	0,69
fC	Affected by Feelings – Emotionally Stable	0,75
fE	Accommodating – Dominant	0,58
fF	Sober Serious – Enthusiastic	0,80
fG	Expedient – Conscientious	0,74
fH	Retiring – Socially-bold	0,77
fI	Hard-headed – Tender-minded	0,64
fL	Trusting – Suspicious	0,63
fM	Concrete – Abstract	0,42
fN	Direct – Restrained	0,57
fO	Confident – Self-doubting	0,61
fQ1	Conventional – Radical	0,66
fQ2	Group-orientated – Self-sufficient	0,70
fQ3	Informal – Self-disciplined	0,45
fQ4	Composed – Tense-driven	0,56

Personality measures should always be interpreted with caution. In cases where the reliability is below 0.65, the results should be interpreted with extreme caution by using additional information for this purpose. The interview prompts report can assist the user in obtaining additional information for the purpose of triangulation, directly from the respondent.