

# Fifteen Factor Questionnaire (15FQ+)

## Reliability: SA Xitsonga Speakers, Updated 2016

---

### Composition of the Sample

The sample consisted of 192 Xitsonga speaking South Africans tested by Psytech SA and collaborators, via GeneSys for Windows, in the period up to June 2015.

### Gender Composition of the Sample

Category	Frequency table: Sex			
	Count	Cumulative Count	Percent	Cumulative Percent
F	64	64	33,33333	33,3333
M	128	192	66,66667	100,0000
Missing	0	192	0,00000	100,0000

### Educational Composition of the Sample

Category	Frequency table: Education			
	Count	Cumulative Count	Percent	Cumulative Percent
Grade 12	56	56	29,16667	29,1667
Tertiary	89	145	46,35417	75,5208
Post Graduate	37	182	19,27083	94,7917
< Matric	2	184	1,04167	95,8333
Missing	8	192	4,16667	100,0000

## Language Composition of the Sample

Category	Frequency table: Language			
	Count	Cumulative Count	Percent	Cumulative Percent
Xitsonga	192	192	100,0000	100,0000
Missing	0	192	0,0000	100,0000

## Language Group Composition of the Sample

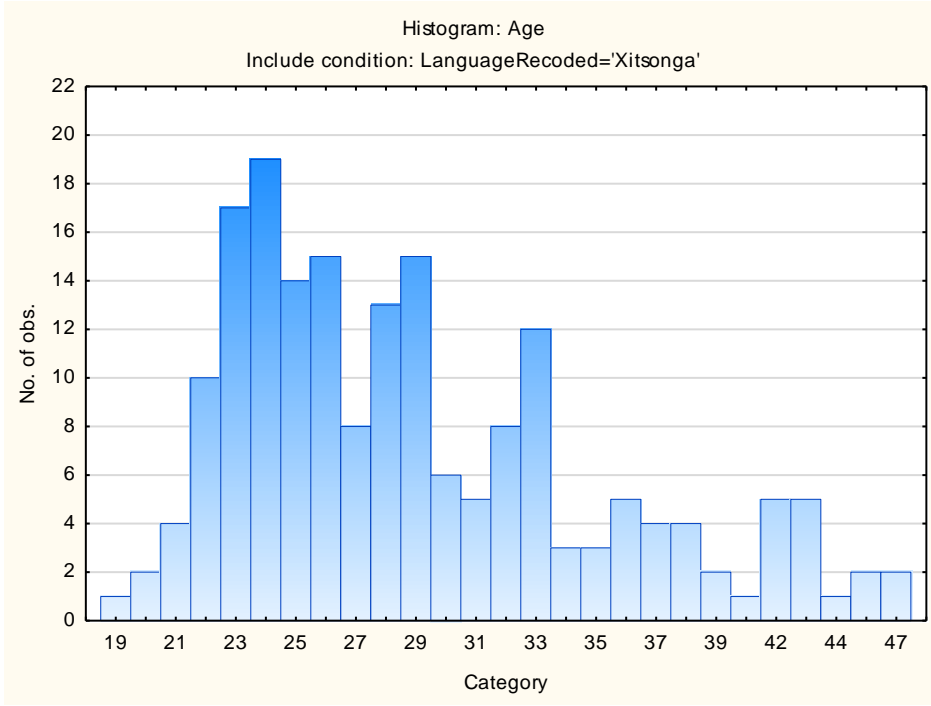
Category	Frequency table: Language Group			
	Count	Cumulative Count	Percent	Cumulative Percent
Indigenous	192	192	100,0000	100,0000
Missing	0	192	0,0000	100,0000

## Racial Composition of the Sample

Category	Frequency table: Race			
	Count	Cumulative Count	Percent	Cumulative Percent
African	191	191	99,47917	99,4792
European	1	192	0,52083	100,0000
Missing	0	192	0,00000	100,0000

## Age Composition and Distribution of the Sample

Variable	Descriptive Statistics: Age					
	Mean	Std.Dev	Minimum	Maximum	N	No.cases Missing
Age	29,08602	6,293121	19,00000	47,00000	186	6



## *Internal consistency reliability on 15FQ+ scales*

<b>Scale</b>	<b>Scale description</b>	<b>Cronbach Alpha</b>
<b>fA</b>	Distant Aloof – Empathic	0,44
<b>B</b>	Intellectance	0,62
<b>fC</b>	Affected by Feelings – Emotionally Stable	0,68
<b>fE</b>	Accommodating – Dominant	0,57
<b>fF</b>	Sober Serious – Enthusiastic	0,76
<b>fG</b>	Expedient – Conscientious	0,72
<b>fH</b>	Retiring – Socially-bold	0,73
<b>fI</b>	Hard-headed – Tender-minded	0,62
<b>fL</b>	Trusting – Suspicious	0,65
<b>fM</b>	Concrete – Abstract	0,43
<b>fN</b>	Direct – Restrained	0,42
<b>fO</b>	Confident – Self-doubting	0,60
<b>fQ1</b>	Conventional – Radical	0,53
<b>fQ2</b>	Group-orientated – Self-sufficient	0,60
<b>fQ3</b>	Informal – Self-disciplined	0,55
<b>fQ4</b>	Composed – Tense-driven	0,63

Personality measures should always be interpreted with caution. In cases where the reliability is below 0.65, the results should be interpreted with extreme caution by using additional information for this purpose. The interview prompts report can assist the user in obtaining additional information for the purpose of triangulation, directly from the respondent.