

OIP Reliability: SA Vocational Guidance Clients

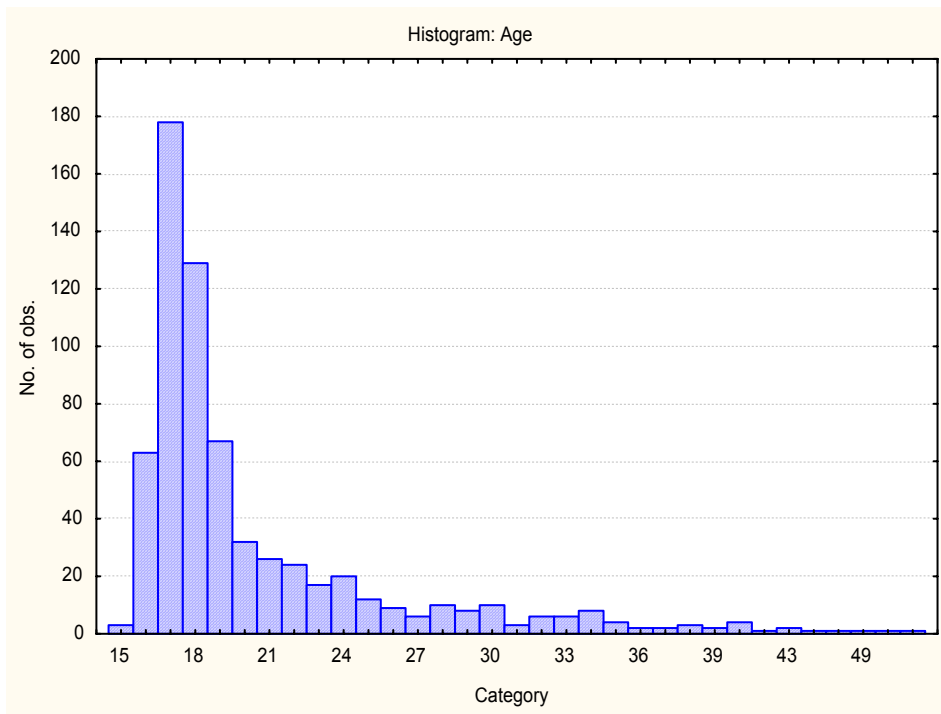
Sample characteristics

Clients receiving vocational guidance at a University in Gauteng. Biographical data was inconsistently captured, and therefore some of the cases were coded for race according to the respondents' names. For reliability calculations, only cases where the item responses were available, were included. Where there was doubt about whether respondent was White or Coloured, the code WC was used. Data were collected between 2001 and 2003.

Category	Frequency table: Race			
	Count	Cumulative Count	Percent	Cumulative Percent
Asian	110	110	16.61631	16.6163
European	84	194	12.68882	29.3051
African	60	254	9.06344	38.3686
Coloured	9	263	1.35952	39.7281
Other	5	268	0.75529	40.4834
WC	389	657	58.76133	99.2447
Missing	5	662	0.75529	100.0000

Category	Frequency table: Sex			
	Count	Cumulative Count	Percent	Cumulative Percent
F	347	347	52.41692	52.4169
M	312	659	47.12991	99.5468
Missing	3	662	0.45317	100.0000

Variable	Descriptive Statistics AGE					
	Mean	Std.Dev	Minimum	Maximum	N	No.cases Missing
Age	20.44562	5.770385	15.00000	58.00000	662	0



Internal consistency reliability (Coefficient Alpha) on OIP scales

Scale	Total Group N = 662	Whites/Coloureds N = 389	Asians N = 110	Blacks N = 60
Need for Excitement	.821571676	.839131814	.829779001	.713060746
Stability	.788798524	.801017250	.747791493	.696282286
Need for Change	.787985476	.790170262	.777666981	.809667564
Need for People	.800501356	.812499992	.771102497	.660351761
Need for Control	.825149268	.841301344	.829115923	.751103818
Persuasive interest	.799133230	.801368218	.795997636	.773472614
Scientific interest	.832183227	.822318745	.850970880	.823523192
Practical interest	.770364566	.771117995	.772736617	.781869072
Administrative interest	.851548549	.825946440	.856424125	.783692513
Caring interest	.854285263	.869541164	.825763393	.819017501
Artistic/creative interest	.883320410	.887406470	.894510766	.877057078
Logical interest	.812211999	.822946915	.778563092	.824962208
Mean alpha	0.818921129	0.823730551	0.810868534	0.776171696

Standard error of measurement: Total group

	1 ScaleName	2 SEM	3 SD	4 Reliability
1	Need for Excitement	2.81610	6.666771	0.82157168
2	Stability	3.11928	6.787434	0.78879852
3	Need for change	2.93208	6.367857	0.78798548
4	Need for people	3.50546	7.848298	0.80050136
5	Need for control	2.96261	7.085007	0.82514927
6	Persuasive interest	3.34546	7.464527	0.79913323
7	Scientific interest	3.24358	7.917841	0.83218323
8	Practical/mechanical interest	3.29625	6.878605	0.77036457
9	Administrative interest	3.10882	8.068689	0.85154855
10	Caring interest	2.97533	7.794402	0.85428526
11	Artistic/creative interest	3.18497	9.324129	0.88332041
12	Logical/computational interest	3.287466	7.586253	0.812212

Standard error of measurement: Whites/Coloureds

	1 ScaleName	2 SEM	3 SD	4 Reliability
1	Need for Excitement	2.71484	6.768764	0.83913181
2	Stability	3.06553	6.872231	0.80101725
3	Need for change	2.90792	6.348171	0.79017026
4	Need for people	3.42751	7.915497	0.81249999
5	Need for control	2.88200	7.234480	0.84130134
6	Persuasive interest	3.29921	7.402613	0.80136822
7	Scientific interest	3.22935	7.661159	0.82231874
8	Practical/mechanical interest	3.20400	6.697108	0.77111799
9	Administrative interest	3.02905	7.260466	0.82594644
10	Caring interest	2.89024	8.001964	0.86954116
11	Artistic/creative interest	3.14612	9.376025	0.88740647
12	Logical/computational interest	3.285778	7.808839	0.82294692

Standard error of measurement: Asians

	1 ScaleName	2 SEM	3 SD	4 Reliability
1	Need for Excitement	2.91966	7.076615	0.829779
2	Stability	3.33536	6.641442	0.74779149
3	Need for change	2.99696	6.355922	0.77766698
4	Need for people	3.64584	7.620393	0.7711025
5	Need for control	2.97477	7.196196	0.82911592
6	Persuasive interest	3.42942	7.592828	0.79599764
7	Scientific interest	3.30537	8.562170	0.85097088
8	Practical/mechanical interest	3.48712	7.314803	0.77273662
9	Administrative interest	3.20764	8.465349	0.85642412
10	Caring interest	3.14993	7.546249	0.82576339
11	Artistic/creative interest	3.16720	9.751495	0.89451077
12	Logical/computational interest	3.317936	7.050876	0.77856309

Standard error of measurement: Blacks

	1 ScaleName	2 SEM	3 SD	4 Reliability
1	Need for Excitement	3.17456	5.926361	0.7130607
2	Stability	3.34044	6.061339	0.6962823
3	Need for change	2.92284	6.699587	0.8096676
4	Need for people	3.77707	6.480980	0.6603518
5	Need for control	3.06315	6.139872	0.7511038
6	Persuasive interest	3.42237	7.190625	0.7734726
7	Scientific interest	3.36382	8.007341	0.8235232
8	Practical/mechanical interest	3.27134	7.004337	0.7818691
9	Administrative interest	3.45428	7.427141	0.7836925
10	Caring interest	3.14204	7.385740	0.8190175
11	Artistic/creative interest	3.16426	9.024449	0.8770571
12	Logical/computational interest	3.043089	7.273588	0.8249622