

Occupational Personality Profile Reliability: South African English speakers updated 2011

Sample composition

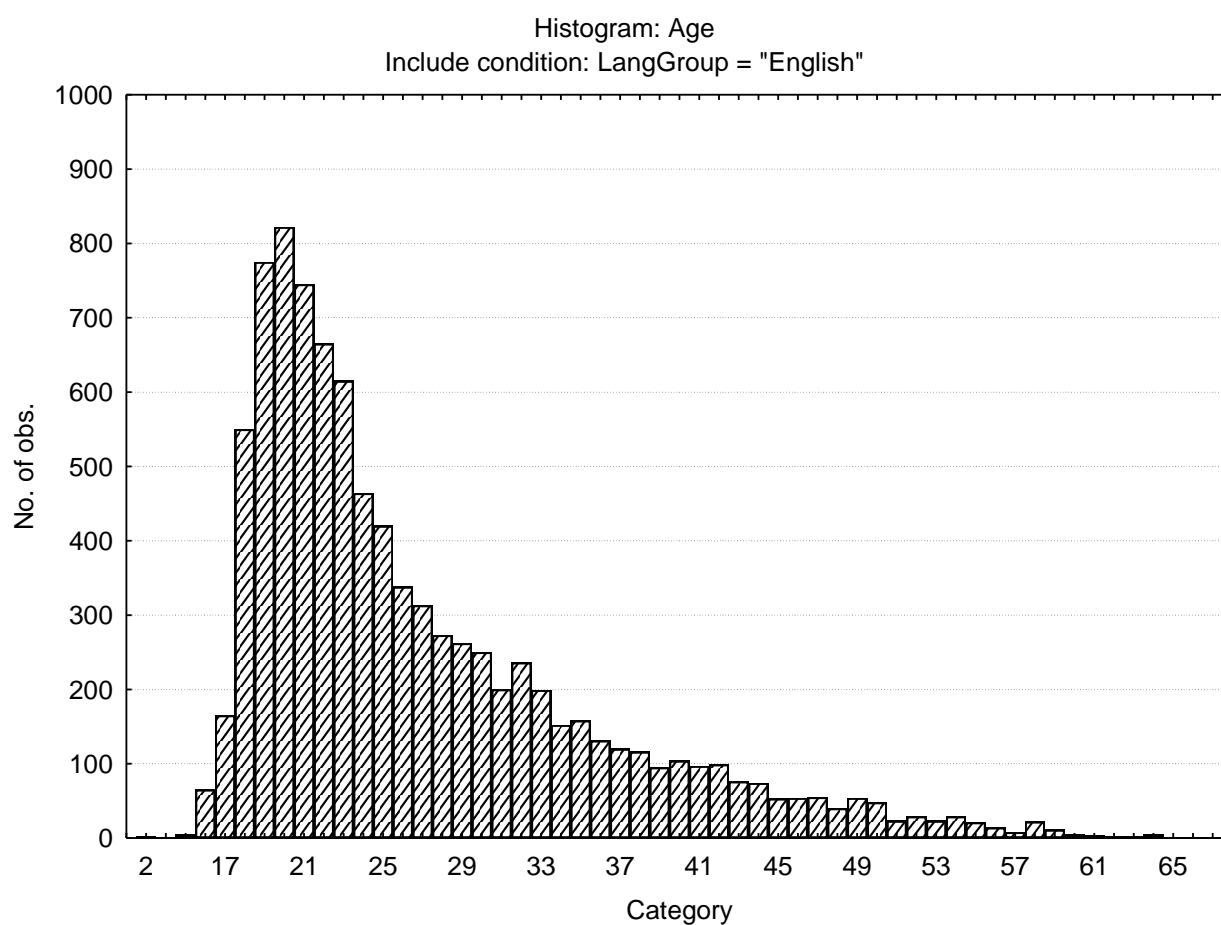
The sample consisted of persons speaking English as a first language, tested on the OPPro by Psytech and collaborators, in the period leading up to January 2011

Category	Frequency table: Sex			
	Count	Cumulative Count	Percent	Cumulative Percent
F	5569	5569	60.75052	60.7505
M	3586	9155	39.11858	99.8691
U	12	9167	0.13090	100.0000
Missing	0	9167	0.00000	100.0000

Category	Frequency table: Educational Group			
	Count	Cumulative Count	Percent	Cumulative Percent
<Grade 12	949	949	10.35235	10.3524
Grade 12	6048	6997	65.97578	76.3281
Diploma	162	7159	1.76721	78.0953
Degree	306	7465	3.33806	81.4334
Post Graduate	241	7706	2.62900	84.0624
Missing	1461	9167	15.93760	100.0000

Category	Frequency table: Race			
	Count	Cumulative Count	Percent	Cumulative Percent
African	418	418	4.55983	4.5598
European	1116	1534	12.17410	16.7339
Coloured	4282	5816	46.71103	63.4450
Asian	3239	9055	35.33326	98.7782
Missing	112	9167	1.22177	100.0000

Variable	Descriptive Statistics: Age					
	Mean	Std.Dev	Minimum	Maximum	N	No.cases Missing
Age	26.79949	8.767204	2.000000	73.00000	9092	75



Internal Consistency Reliabilities on Occupational Personality Profile scales

Scale Name	Cronbach Coefficient Alpha
Acommodating - Assertive	.58
Detail-conscious – Flexible	.55
Cynical – Trusting	.73
Emotional – Phlegmatic	.72
Reserved – Gregarious	.66
Genuine – Persuasive	.69
Composed – Contesting	.69
Optimistic – Pessimistic	.73
Abstract – Pragmatic	.58
Social Conformity	.59