

# Occupational Personality Profile reliabilities: South Africans of Coloured Race updated 2011

---

## Sample composition

The sample consisted of 8097 South Africans who stated their race as Coloured, tested by Psytech South Africa and collaborators in the period leading up to January 2011.

## Gender composition of the sample

Category	Frequency table: Sex			
	Count	Cumulative Count	Percent	Cumulative Percent
F	5385	5385	66.50611	66.5061
M	2705	8090	33.40743	99.9135
U	7	8097	0.08645	100.0000
Missing	0	8097	0.00000	100.0000

## Educational composition of the sample

Category	Frequency table: Education			
	Count	Cumulative Count	Percent	Cumulative Percent
<Grade 12	1155	1155	14.26454	14.2645
Grade 12	5394	6549	66.61727	80.8818
Diploma	154	6703	1.90194	82.7837
Degree	77	6780	0.95097	83.7347
Post Graduate	61	6841	0.75337	84.4881
Missing	1256	8097	15.51192	100.0000

## Language composition of the sample

Category	Frequency table:: Language			
	Count	Cumulative Count	Percent	Cumulative Percent
isiZulu	20	20	0.24701	0.2470
English	4282	4302	52.88378	53.1308
isiXhosa	62	4364	0.76572	53.8965
Afrikaans	3105	7469	38.34754	92.2440
Sesotho	6	7475	0.07410	92.3181
Siswati	1	7476	0.01235	92.3305

Category	Frequency table:: Language			
	Count	Cumulative Count	Percent	Cumulative Percent
Setswana	11	7487	0.13585	92.4663
Sepedi	21	7508	0.25936	92.7257
Tshivenda	2	7510	0.02470	92.7504
isiNdebele	1	7511	0.01235	92.7628
isNdebele	1	7512	0.01235	92.7751
Missing	585	8097	7.22490	100.0000

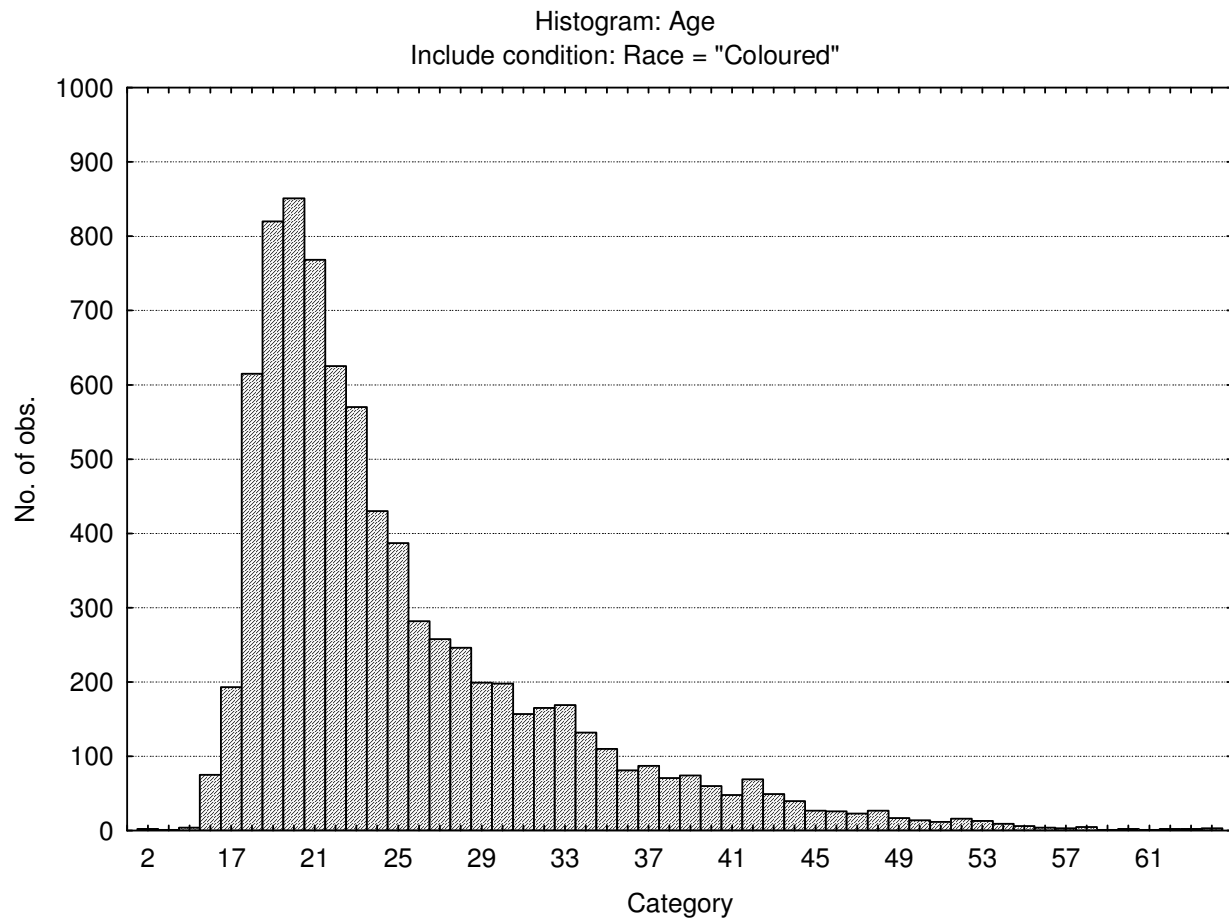
Category	Frequency table: Language Group			
	Count	Cumulative Count	Percent	Cumulative Percent
Indigenous	113	113	1.39558	1.3956
English	4282	4395	52.88378	54.2794
Afrikaans	3105	7500	38.34754	92.6269
Missing	597	8097	7.37310	100.0000

### Racial composition of the sample

Category	Frequency table: Race			
	Count	Cumulative Count	Percent	Cumulative Percent
Coloured	8097	8097	100.0000	100.0000
Missing	0	8097	0.0000	100.0000

### Age composition of the sample

Variable	Descriptive Statistics : Age					
	Mean	Std.Dev	Minimum	Maximum	N	No.cases Missing
Age	25.05404	7.401872	2.000000	64.00000	8049	48



## Internal consistency reliabilities for Occupational Personality Profile scales

Scale Name	Cronbach Coefficient Alpha
Accommodating - Assertive	.54
Detail-conscious – Flexible	.51
Cynical – Trusting	.69
Emotional – Phlegmatic	.71
Reserved – Gregarious	.62
Genuine – Persuasive	.66
Composed – Contesting	.68
Optimistic – Pessimistic	.69
Abstract – Pragmatic	.53
Social Conformity	.57