

OIP Reliability: SA Grade 7

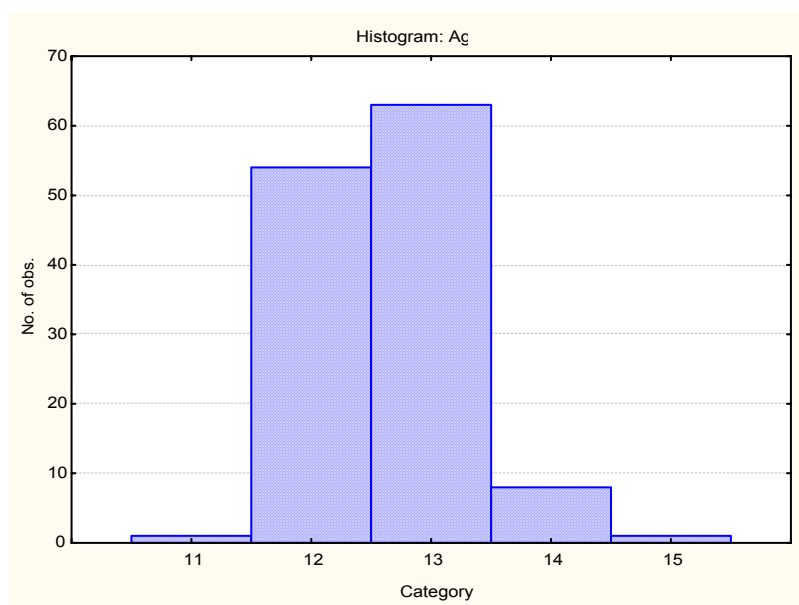
Sample composition

South African grade 7 pupils at an English Medium primary school in Gauteng. Pupils completed the questionnaire to assist with vocational guidance regarding choice of high school and subjects. Race was coded based on applicants' names. Whites and coloureds were coded WC unless definite information was available. Data were collected in 2002.

Frequency table: Race				
Category	Count	Cumulative Count	Percent	Cumulative Percent
A	23	23	18.11024	18.1102
WC	56	79	44.09449	62.2047
W	1	80	0.78740	62.9921
B	46	126	36.22047	99.2126
Missing	1	127	0.78740	100.0000

Frequency table: Sex				
Category	Count	Cumulative Count	Percent	Cumulative Percent
F	62	62	48.81890	48.8189
M	65	127	51.18110	100.0000
Missing	0	127	0.00000	100.0000

Descriptive Statistics						
Variable	Mean	Std.Dev	Minimum	Maximum	N	No.cases Missing
Age	12.63780	0.650632	11.00000	15.00000	127	0



Internal Consistency reliabilities (coefficient Alpha) on OIP scales

Reliabilities lower than .5 have been highlighted.

Scale	Total Group N = 127	Whites/Coloureds N = 57	Asians N = 23	Blacks N = 60
Need for Excitement	.723940890	.701881998	.810746553	.666257716
Stability	.766855632	.766967065	.777563573	.771621058
Need for Change	.603460455	.665095718	.663429557	.468479381
Need for People	.663465821	.777739922	.641007803	.364527373
Need for Control	.689991272	.739780910	.578334410	.551034423
Persuasive interest	.666633987	.730260544	.632188305	.510889549
Scientific interest	.737775288	.769587631	.758529505	.693890277
Practical interest	.721893720	.816099332	.709905222	.467069526
Administrative interest	.616790997	.700477238	.548024726	.491542253
Caring interest	.739553159	.695005313	.714015657	.777867773
Artistic/creative interest	.806023041	.829919665	.783223659	.736644230
Logical interest	.810368353	.793936031	.805701231	.842129272
Mean alpha	0.712229385	0.748895947	0.701889183	0.611829403

While the OIP was not really intended to be used at primary school level, the internal consistency reliability levels for the Total Group, White/coloured group and Asian group were higher than expected. The low reliabilities for four of the scales on the Black group are probably due to the fact that these students were not tested in their home language. Users are advised to be cautious when using the OIP on this age group, and to assess English language proficiency before using a questionnaire measure such as the OIP.

Standard error of measurement: Total group

	1 ScaleName	2 SEM	3 SD	4 Reliability
1	Need for Excitement	3.0843456	5.870323	0.7239409
2	Stability	3.3195899	6.874988	0.7668556
3	Need for change	2.8824206	4.577350	0.6034605
4	Need for People	3.9427001	6.796404	0.6634658
5	Need for Control	3.4056792	6.116694	0.6899913
6	Persuasive interest	3.5678703	6.179430	0.666634
7	Scientific interest	3.384398	6.609135	0.7377753
8	Practical interest	3.3292538	6.313083	0.7218937
9	Administrative interest	3.5940738	5.805895	0.616791
10	Caring interest	3.1320091	6.137104	0.7395532
11	Artistic/creative interest	3.4430345	7.817472	0.806023
12	Logical interest	2.9231856	6.712758	0.8103684

Standard error of measurement: Whites and coloureds

	1 ScaleName	2 SEM	3 SD	4 Reliability
1	Need for Excitement	2.940818	5.386096	0.701882
2	Stability	3.164558	6.555479	0.7669671
3	Need for change	2.504753	4.328173	0.6650957
4	Need for People	3.659699	7.762733	0.7777399
5	Need for Control	3.28771	6.445015	0.7397809
6	Persuasive interest	3.425247	6.595073	0.7302605
7	Scientific interest	3.269213	6.810678	0.7695876
8	Practical interest	3.10968	7.251437	0.8160993
9	Administrative interest	3.419397	6.247907	0.7004772
10	Caring interest	3.058639	5.538372	0.6950053
11	Artistic/creative interest	3.410379	8.269429	0.8299197
12	Logical interest	2.764473	6.089917	0.793936

Standard error of measurement: Asians

	1 ScaleName	2 SEM	3 SD	4 Reliability
1	Need for Excitement	3.015236	6.931055	0.8107466
2	Stability	3.365774	7.136445	0.7775636
3	Need for change	2.439094	4.204270	0.6634296
4	Need for People	3.842776	6.413610	0.6410078
5	Need for Control	3.853997	5.935090	0.5783344
6	Persuasive interest	3.594633	5.927093	0.6321883
7	Scientific interest	3.289432	6.694048	0.7585295
8	Practical interest	3.31344	6.151898	0.7099052
9	Administrative interest	3.874257	5.762767	0.5480247
10	Caring interest	3.283691	6.140322	0.7140157
11	Artistic/creative interest	2.95106	6.338289	0.7832237
12	Logical interest	2.955373	6.704668	0.8057012

Standard Error of measurement: Blacks

	1 ScaleName	2 SEM	3 SD	4 Reliability
1	Need for Excitement	3.111571	5.386096	0.6662577
2	Stability	3.132799	6.555479	0.7716211
3	Need for change	3.155475	4.328173	0.4684794
4	Need for People	6.188182	7.762733	0.3645274
5	Need for Control	4.318476	6.445015	0.5510344
6	Persuasive interest	4.612359	6.595073	0.5108895
7	Scientific interest	3.768156	6.810678	0.6938903
8	Practical interest	5.2937	7.251437	0.4670695
9	Administrative interest	4.455146	6.247907	0.4915423
10	Caring interest	2.610285	5.538372	0.7778678
11	Artistic/creative interest	4.243722	8.269429	0.7366442
12	Logical interest	2.419704	6.089917	0.8421293