

Occupational Personality Profile (OPPro) Reliability: South Africans, isiZulu Language Group, Updated 2019

Composition of the Sample

The sample consisted of South Africans tested by Psytech South Africa and collaborators during the period up to June 2019, both on GeneSys for Windows (up to June 2015) and GeneSys online (up to June 2019).

Gender Composition of the Sample

Category	Frequency table: Sex			
	Count	Cumulative Count	Percent	Cumulative Percent
M	3294	3294	49,55619	49,5562
F	3335	6629	50,17301	99,7292
U	18	6647	0,27080	100,0000
Missing	0	6647	0,00000	100,0000

Educational Composition of the Sample

Category	Frequency table: Education			
	Count	Cumulative Count	Percent	Cumulative Percent
Tertiary	1732	1732	26,05687	26,0569
< Matric	339	2071	5,10005	31,1569
Grade 12	2686	4757	40,40921	71,5661
Degree	146	4903	2,19648	73,7626
Post Graduate	685	5588	10,30540	84,0680
Tertiary Cert / Trade	786	6374	11,82488	95,8929
Missing	273	6647	4,10712	100,0000

Language Composition of the Sample

Category	Frequency table: Language			
	Count	Cumulative Count	Percent	Cumulative Percent
isiZulu	6647	6647	100,0000	100,0000
Missing	0	6647	0,0000	100,0000

Language Group Composition of the Sample

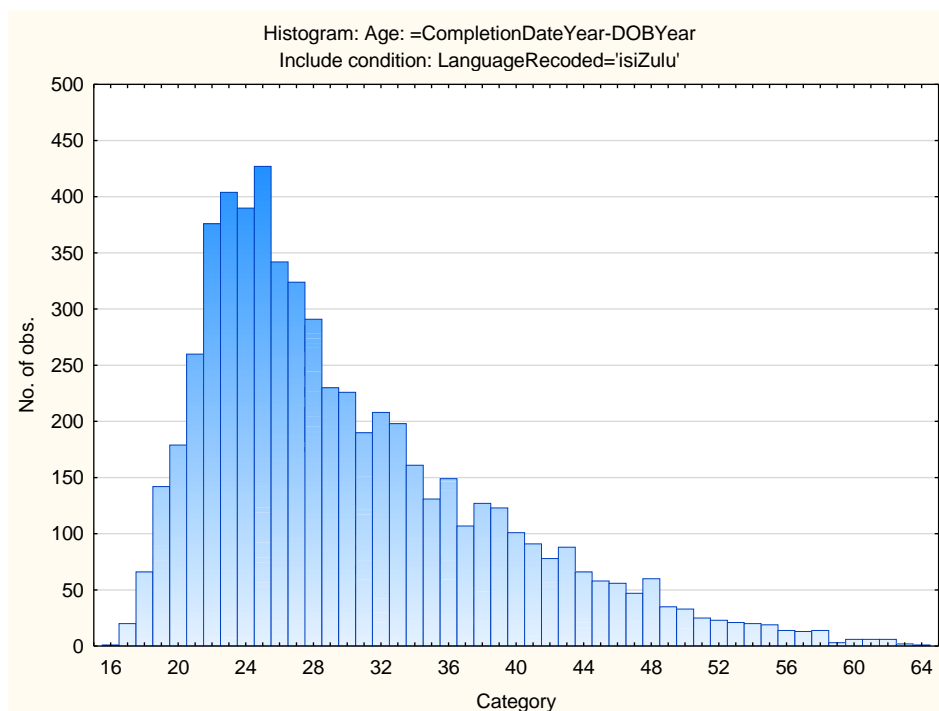
Category	Frequency table: Language Group			
	Count	Cumulative Count	Percent	Cumulative Percent
Indigenous	6647	6647	100,0000	100,0000
Missing	0	6647	0,0000	100,0000

Racial Composition of the Sample

Category	Frequency table: Race			
	Count	Cumulative Count	Percent	Cumulative Percent
African	6366	6366	95,77253	95,7725
European	3	6369	0,04513	95,8177
Coloured	12	6381	0,18053	95,9982
Asian	18	6399	0,27080	96,2690
Missing	248	6647	3,73101	100,0000

Age Composition and Distribution of the Sample

Variable	Descriptive Statistics					
	Mean	Std.Dev	Minimum	Maximum	N	No.cases Missing
Age	30,05874	8,604603	16,00000	64,00000	5958	689



Internal Consistency Reliability on OPPro Scales

Scale	Scale description	Cronbach Alpha
ASSERTIVE	Accommodating - Assertive	0,46
FLEXIBLE	Detail-Conscious - Flexible	0,57
TRUSTING	Cynical - Trusting	0,74
PHLEG	Emotional - Phlegmatic	0,69
GREGAR	Reserved - Gregarious	0,66
PERSUAS	Genuine - Persuasive	0,62
CONTEST	Composed - Contesting	0,67
EXTERNAL	Optimistic - Pessimistic	0,74
PRAGMATIC	Abstract - Pragmatic	0,51
CONFORM	Low Distortion - High Distortion	0,61

Personality measures should always be interpreted with caution. In cases where the reliability is below 0.65, the results should be interpreted with extreme caution by using additional information for this purpose. The interview prompts report can assist the user in obtaining additional information for the purpose of triangulation, directly from the respondent.