

# Occupational Personality Profile (OPPro) Reliability: South Africans, Sepedi Language Group, Updated 2019

---

## Composition of the Sample

The sample consisted of South Africans tested by Psytech South Africa and collaborators during the period up to June 2019, both on GeneSys for Windows (up to June 2015) and GeneSys online (up to June 2019).

## Gender Composition of the Sample

Category	Frequency table: Sex			
	Count	Cumulative Count	Percent	Cumulative Percent
M	1192	1192	49,23585	49,2359
F	1219	2411	50,35109	99,5869
U	10	2421	0,41305	100,0000
Missing	0	2421	0,00000	100,0000

## Educational Composition of the Sample

Category	Frequency table: Education			
	Count	Cumulative Count	Percent	Cumulative Percent
Tertiary	746	746	30,81371	30,8137
< Matric	65	811	2,68484	33,4986
Grade 12	851	1662	35,15076	68,6493
Degree	98	1760	4,04791	72,6972
Post Graduate	300	2060	12,39157	85,0888
Tertiary Cert / Trade	247	2307	10,20240	95,2912
Missing	114	2421	4,70880	100,0000

## Language Composition of the Sample

Category	Frequency table: Language			
	Count	Cumulative Count	Percent	Cumulative Percent
Sepedi	2421	2421	100,0000	100,0000
Missing	0	2421	0,0000	100,0000

## Language Group Composition of the Sample

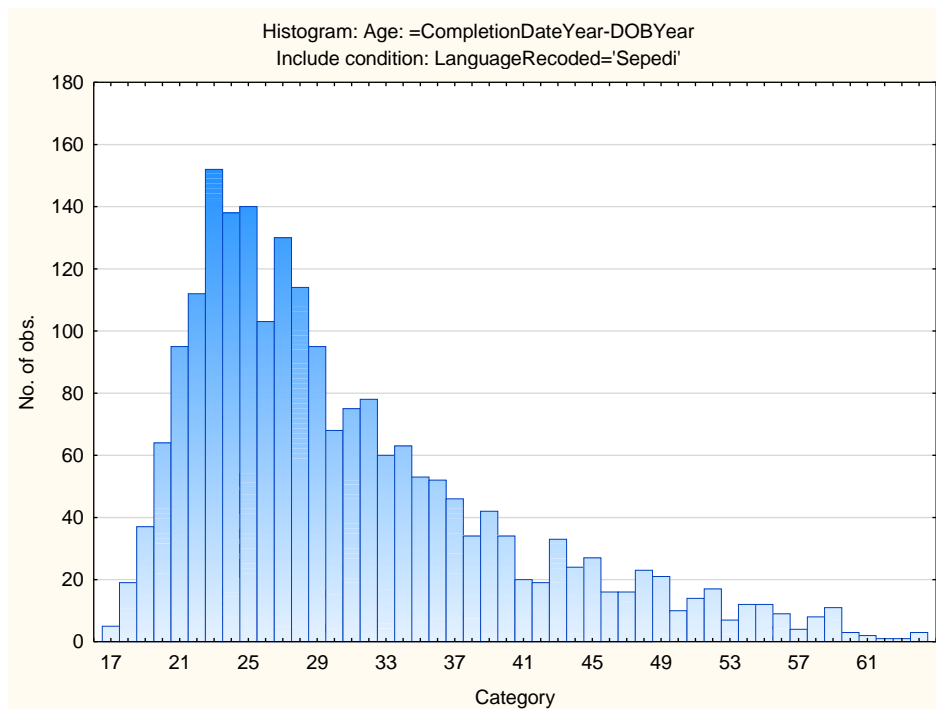
Category	Frequency table: Language Group			
	Count	Cumulative Count	Percent	Cumulative Percent
Indigenous	2421	2421	100,0000	100,0000
Missing	0	2421	0,0000	100,0000

## Racial Composition of the Sample

Category	Frequency table: Race			
	Count	Cumulative Count	Percent	Cumulative Percent
African	2357	2357	97,35646	97,3565
European	5	2362	0,20653	97,5630
Coloured	14	2376	0,57827	98,1413
Asian	7	2383	0,28914	98,4304
Missing	38	2421	1,56960	100,0000

## Age Composition and Distribution of the Sample

Variable	Descriptive Statistics					
	Mean	Std.Dev	Minimum	Maximum	N	No.cases Missing
Age	30,71819	9,222062	17,00000	64,00000	2122	299



## Internal Consistency Reliability on OPPro Scales

Scale	Scale description	Cronbach Alpha
<b>ASSERTIVE</b>	Accommodating - Assertive	0,41
<b>FLEXIBLE</b>	Detail-Conscious - Flexible	0,56
<b>TRUSTING</b>	Cynical - Trusting	0,75
<b>PHLEG</b>	Emotional - Phlegmatic	0,69
<b>GREGAR</b>	Reserved - Gregarious	0,67
<b>PERSUAS</b>	Genuine - Persuasive	0,62
<b>CONTEST</b>	Composed - Contesting	0,71
<b>EXTERNAL</b>	Optimistic - Pessimistic	0,74
<b>PRAGMATIC</b>	Abstract - Pragmatic	0,51
<b>CONFORM</b>	Low Distortion - High Distortion	0,70

Personality measures should always be interpreted with caution. In cases where the reliability is below 0.65, the results should be interpreted with extreme caution by using additional information for this purpose. The interview prompts report can assist the user in obtaining additional information for the purpose of triangulation, directly from the respondent.