

15FQ+ Reliability comparison across race groups

Sample composition

The sample consisted of South Africans tested by Psytech and collaborators in the period up to February 2010. The biographical composition of the group is reported separately for the different race groups:

Sample composition: General Population

Category	Frequency table: Sex			
	Count	Cumulative Count	Percent	Cumulative Percent
F	9389	9389	38.17132	38.1713
M	14980	24369	60.90174	99.0731
Missing	228	24597	0.92694	100.0000

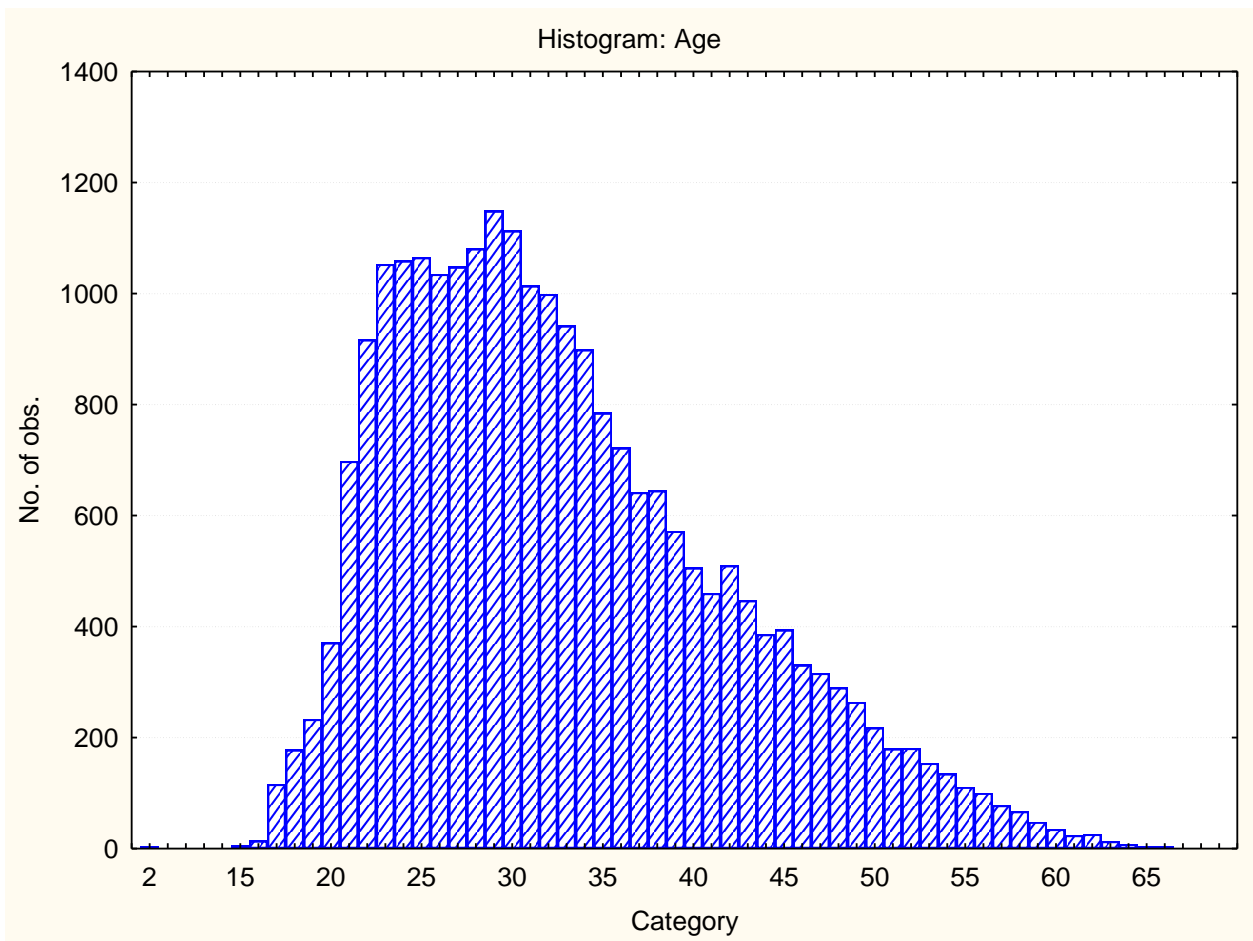
Category	Frequency table: Education			
	Count	Cumulative Count	Percent	Cumulative Percent
Grade 12	3858	3858	15.68484	15.6848
Degree	2249	6107	9.14339	24.8282
Post Graduate	1927	8034	7.83429	32.6625
Technikon	1744	9778	7.09030	39.7528
University diploma	1174	10952	4.77294	44.5258
Grade 10 or 11	376	11328	1.52864	46.0544
Vocational Training	487	11815	1.97992	48.0343
Diploma	255	12070	1.03671	49.0710
Certificate	155	12225	0.63016	49.7012
Missing	12372	24597	50.29882	100.0000

Category	Frequency table: Language			
	Count	Cumulative Count	Percent	Cumulative Percent
English	5102	5102	20.74237	20.7424
Afrikaans	2857	7959	11.61524	32.3576
isiZulu	1589	9548	6.46014	38.8177
isiXhosa	1048	10596	4.26068	43.0784
Sesotho	752	11348	3.05728	46.1357
Setswana	740	12088	3.00850	49.1442
Sepedi	298	12386	1.21153	50.3557
Xitsonga	184	12570	0.74806	51.1038
Tshivenda	146	12716	0.59357	51.6974
siSwati	103	12819	0.41875	52.1161
isiNdebele	56	12875	0.22767	52.3438
Missing	11722	24597	47.65622	100.0000

Category	Frequency table: Language group			
	Count	Cumulative Count	Percent	Cumulative Percent
Indigenous	4145	4145	16.85165	16.8516
Afrikaans	2857	7002	11.61524	28.4669
English	5102	12104	20.74237	49.2093
Missing	12493	24597	50.79075	100.0000

Category	Frequency table: Race Group			
	Count	Cumulative Count	Percent	Cumulative Percent
African	5803	5803	23.59231	23.5923
European	5002	10805	20.33581	43.9281
Coloured	1124	11929	4.56966	48.4978
Asian	1734	13663	7.04964	55.5474
Missing	10934	24597	44.45258	100.0000

Variable	Descriptive Statistics: Age					
	Mean	Std.Dev	Minimum	Maximum	N	No.cases Missing
Age	32.80917	9.172097	2.000000	72.00000	23654	943



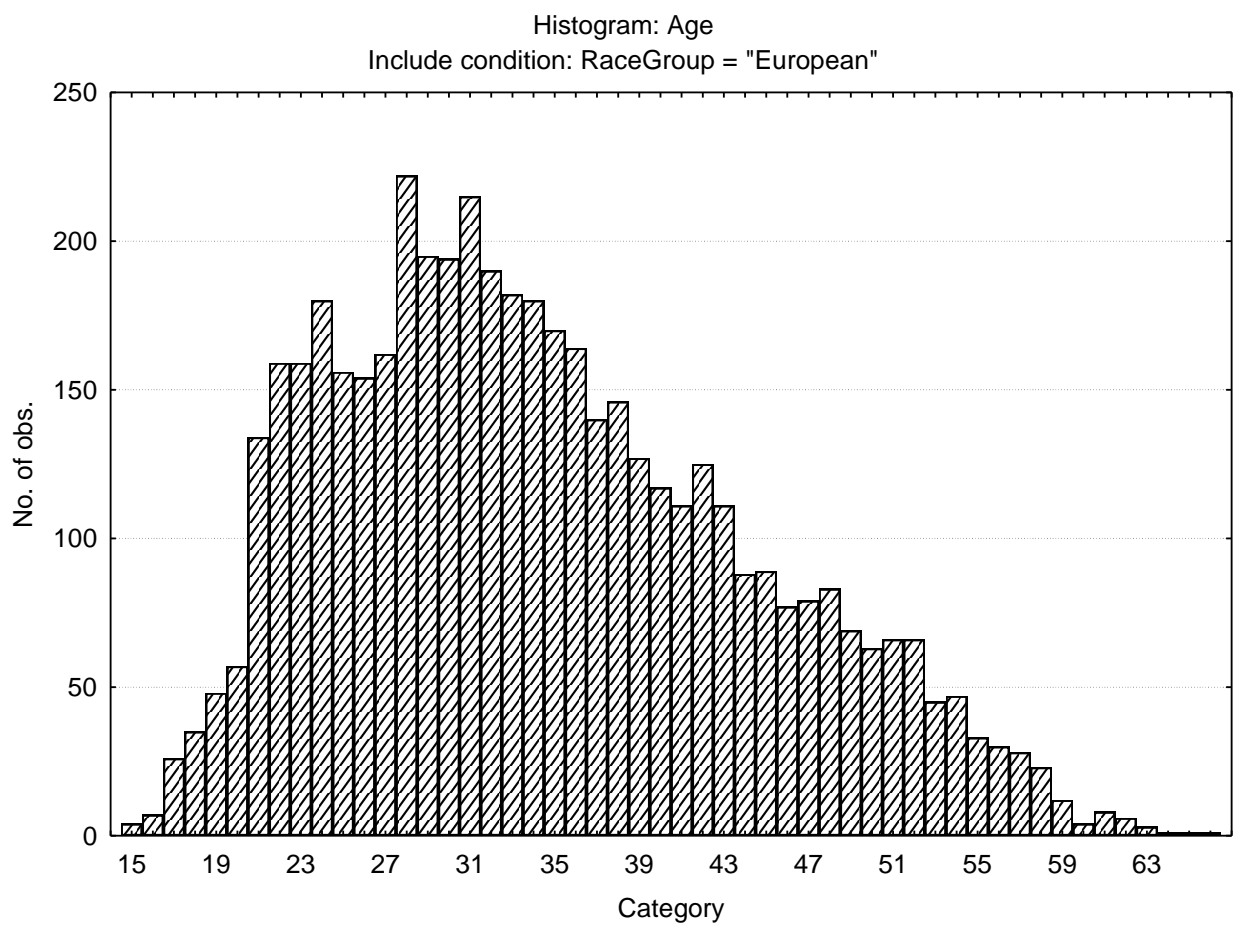
Sample composition: European group

Category	Frequency table: Sex			
	Count	Cumulative Count	Percent	Cumulative Percent
F	1802	1802	36.02559	36.0256
M	3184	4986	63.65454	99.6801
Missing	16	5002	0.31987	100.0000

Category	Frequency table: Education			
	Count	Cumulative Count	Percent	Cumulative Percent
Grade 12	1551	1551	31.00760	31.0076
Degree	777	2328	15.53379	46.5414
Post Graduate	704	3032	14.07437	60.6158
Technikon	485	3517	9.69612	70.3119
University diploma	374	3891	7.47701	77.7889
Grade 10 or 11	152	4043	3.03878	80.8277
Vocational Training	166	4209	3.31867	84.1463
Diploma	72	4281	1.43942	85.5858
Certificate	18	4299	0.35986	85.9456
Missing	703	5002	14.05438	100.0000

Category	Frequency table: Language			
	Count	Cumulative Count	Percent	Cumulative Percent
English	2300	2300	45.98161	45.9816
Afrikaans	2399	4699	47.96082	93.9424
isiZulu	5	4704	0.09996	94.0424
isiXhosa	5	4709	0.09996	94.1423
Sesotho	2	4711	0.03998	94.1823
Setswana	1	4712	0.01999	94.2023
Sepedi	3	4715	0.05998	94.2623
Xitsonga	1	4716	0.01999	94.2823
Tshivenda	1	4717	0.01999	94.3023
siSwati	1	4718	0.01999	94.3223
Missing	284	5002	5.67773	100.0000

Variable	Descriptive Statistics : Age					
	Mean	Std.Dev	Minimum	Maximum	N	No.cases Missing
Age	34.47621	9.785972	15.00000	71.00000	4792	210



Sample composition: African group

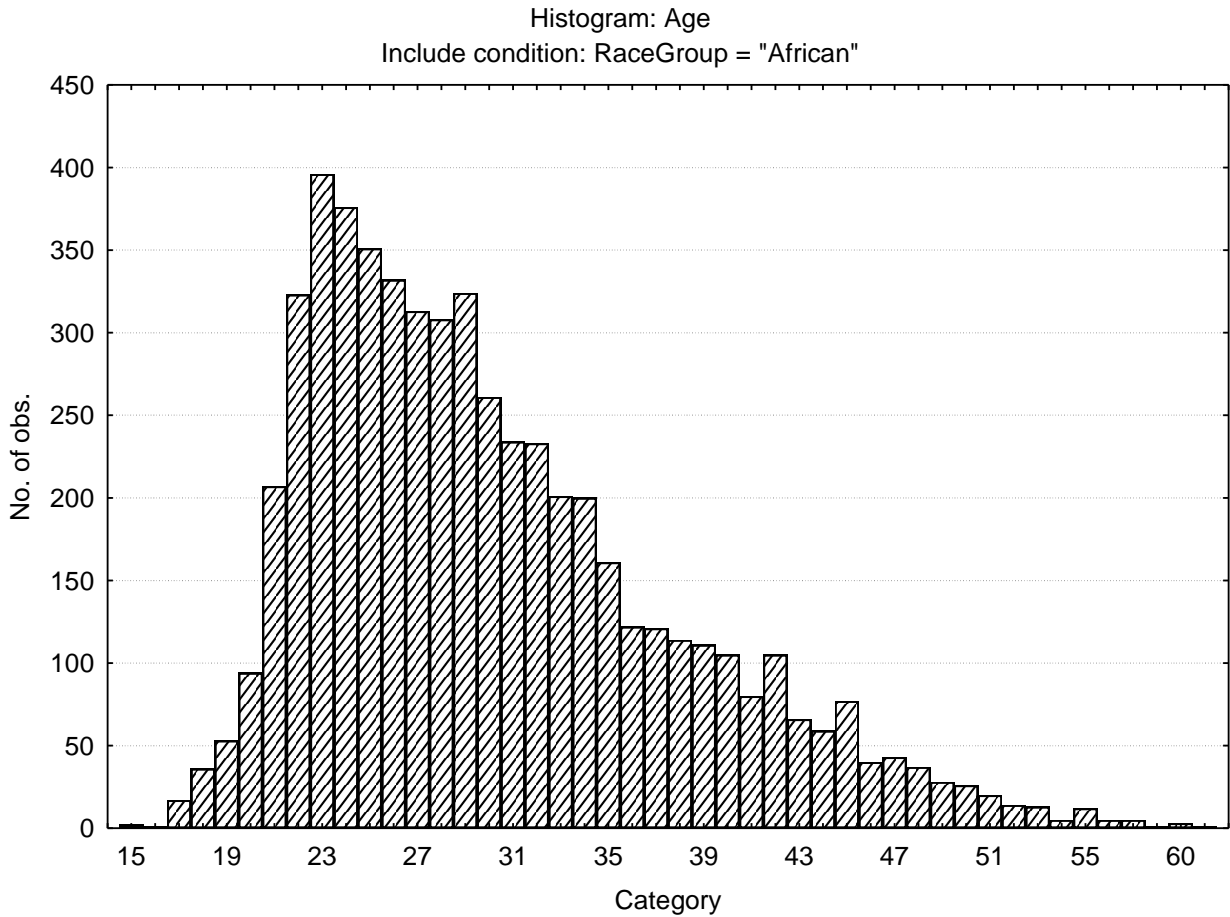
Category	Frequency table: Sex			
	Count	Cumulative Count	Percent	Cumulative Percent
F	2267	2267	39.06600	39.0660
M	3507	5774	60.43426	99.5003
Missing	29	5803	0.49974	100.0000

Category	Frequency table: Education			
	Count	Cumulative Count	Percent	Cumulative Percent
Grade 12	1284	1284	22.12649	22.1265
Degree	979	2263	16.87058	38.9971
Post Graduate	767	3030	13.21730	52.2144
Technikon	937	3967	16.14682	68.3612
University diploma	584	4551	10.06376	78.4250
Grade 10 or 11	114	4665	1.96450	80.3895
Vocational Training	223	4888	3.84284	84.2323
Diploma	143	5031	2.46424	86.6965
Certificate	112	5143	1.93004	88.6266
Missing	660	5803	11.37343	100.0000

Category	Frequency table: Language			
	Count	Cumulative Count	Percent	Cumulative Percent
English	342	342	5.89350	5.8935
Afrikaans	74	416	1.27520	7.1687
isiZulu	1565	1981	26.96881	34.1375
isiXhosa	1027	3008	17.69774	51.8353
Sesotho	745	3753	12.83819	64.6734
Setswana	729	4482	12.56247	77.2359
Sepedi	287	4769	4.94572	82.1816
Xitsonga	183	4952	3.15354	85.3352
Tshivenda	144	5096	2.48148	87.8166
siSwati	100	5196	1.72325	89.5399
isiNdebele	56	5252	0.96502	90.5049
Missing	551	5803	9.49509	100.0000

Category	Frequency table: Language			
	Count	Cumulative Count	Percent	Cumulative Percent
Indigenous	4077	4077	70.25676	70.2568
Afrikaans	74	4151	1.27520	71.5320
English	342	4493	5.89350	77.4255
Missing	1310	5803	22.57453	100.0000

Variable	Descriptive Statistics : Age					
	Mean	Std.Dev	Minimum	Maximum	N	No.cases Missing
Age	30.12793	7.593987	15.00000	62.00000	5636	167



Sample composition: Coloured group

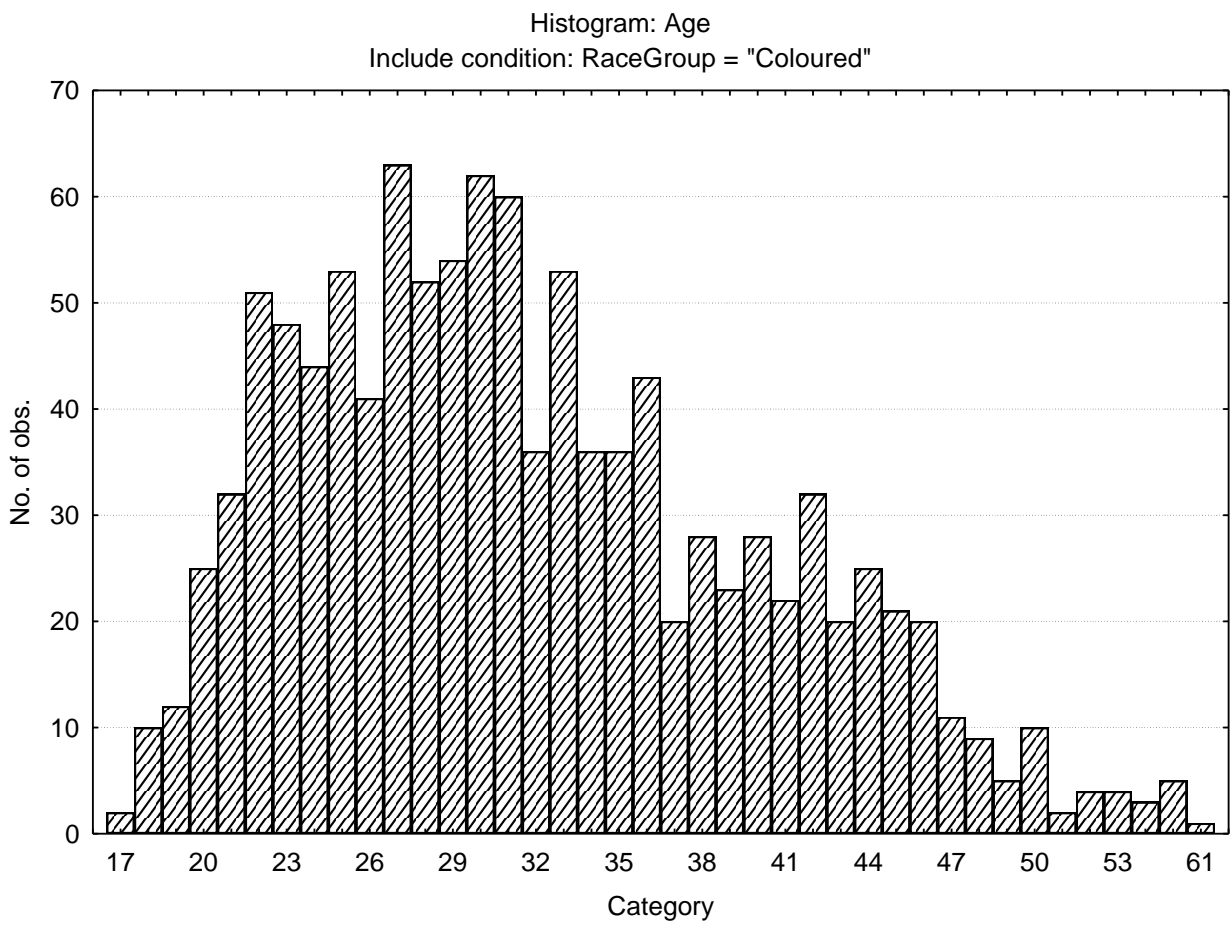
Category	Frequency table: Sex			
	Count	Cumulative Count	Percent	Cumulative Percent
F	483	483	42.97153	42.9715
M	636	1119	56.58363	99.5552
Missing	5	1124	0.44484	100.0000

Category	Frequency table: Education			
	Count	Cumulative Count	Percent	Cumulative Percent
Grade 12	456	456	40.56940	40.5694
Degree	124	580	11.03203	51.6014
Post Graduate	101	681	8.98577	60.5872
Technikon	137	818	12.18861	72.7758
University diploma	64	882	5.69395	78.4698
Grade 10 or 11	58	940	5.16014	83.6299
Vocational Training	41	981	3.64769	87.2776
Diploma	16	997	1.42349	88.7011
Certificate	13	1010	1.15658	89.8577
Missing	114	1124	10.14235	100.0000

Category	Frequency table: Language			
	Count	Cumulative Count	Percent	Cumulative Percent
English	745	745	66.28114	66.2811
Afrikaans	315	1060	28.02491	94.3060
isiZulu	2	1062	0.17794	94.4840
isiXhosa	1	1063	0.08897	94.5730
Sesotho	1	1064	0.08897	94.6619
Setswana	3	1067	0.26690	94.9288
Sepedi	3	1070	0.26690	95.1957
siSwati	1	1071	0.08897	95.2847
Missing	53	1124	4.71530	100.0000

Category	Frequency table: Language Group			
	Count	Cumulative Count	Percent	Cumulative Percent
Indigenous	7	7	0.62278	0.6228
Afrikaans	315	322	28.02491	28.6477
English	745	1067	66.28114	94.9288
Missing	57	1124	5.07117	100.0000

Variable	Descriptive Statistics : Age					
	Mean	Std.Dev	Minimum	Maximum	N	No.cases Missing
Age	31.88879	8.159569	17.00000	61.00000	1106	18



Sample composition: Asian Group

Category	Frequency table: Sex			
	Count	Cumulative Count	Percent	Cumulative Percent
F	687	687	39.61938	39.6194
M	1040	1727	59.97693	99.5963
Missing	7	1734	0.40369	100.0000

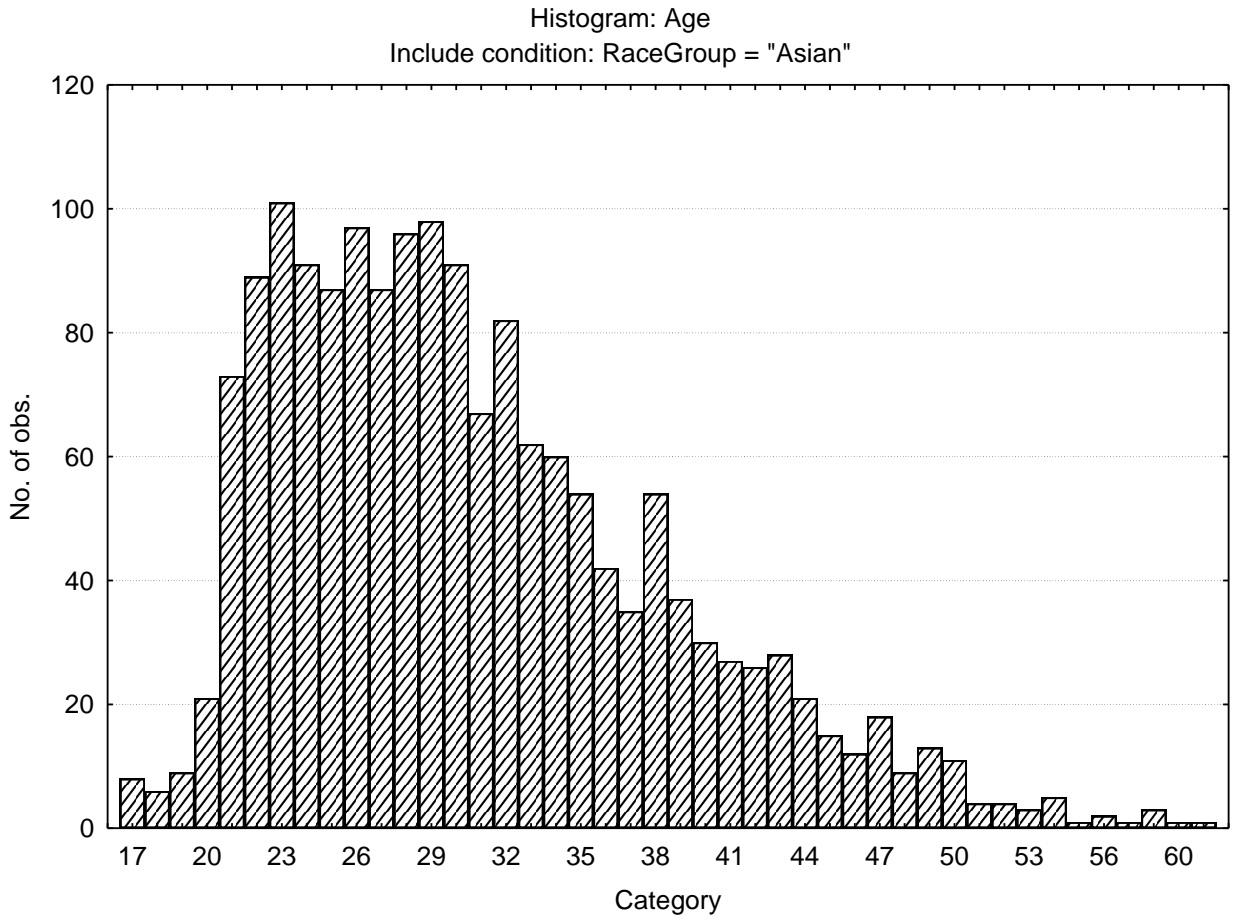
Category	Frequency table: Education			
	Count	Cumulative Count	Percent	Cumulative Percent
Grade 12	484	484	27.91234	27.9123
Degree	340	824	19.60784	47.5202
Post Graduate	321	1145	18.51211	66.0323
Technikon	163	1308	9.40023	75.4325
University diploma	133	1441	7.67013	83.1027
Grade 10 or 11	42	1483	2.42215	85.5248
Vocational Training	45	1528	2.59516	88.1200
Diploma	24	1552	1.38408	89.5040
Certificate	9	1561	0.51903	90.0231
Missing	173	1734	9.97693	100.0000

Category	Frequency table: Language			
	Count	Cumulative Count	Percent	Cumulative Percent
English	1587	1587	91.52249	91.5225
Afrikaans	5	1592	0.28835	91.8108
isiZulu	5	1597	0.28835	92.0992
isiXhosa	2	1599	0.11534	92.2145
Sepedi	5	1604	0.28835	92.5029
Tshivenda	1	1605	0.05767	92.5606
Missing	129	1734	7.43945	100.0000

Category	Frequency table: Language Group			
	Count	Cumulative Count	Percent	Cumulative Percent
Indigenous	13	13	0.74971	0.7497
Afrikaans	5	18	0.28835	1.0381
English	1587	1605	91.52249	92.5606
Missing	129	1734	7.43945	100.0000

Category	Frequency table: Race Group			
	Count	Cumulative Count	Percent	Cumulative Percent
Asian	1734	1734	100.0000	100.0000
Missing	0	1734	0.0000	100.0000

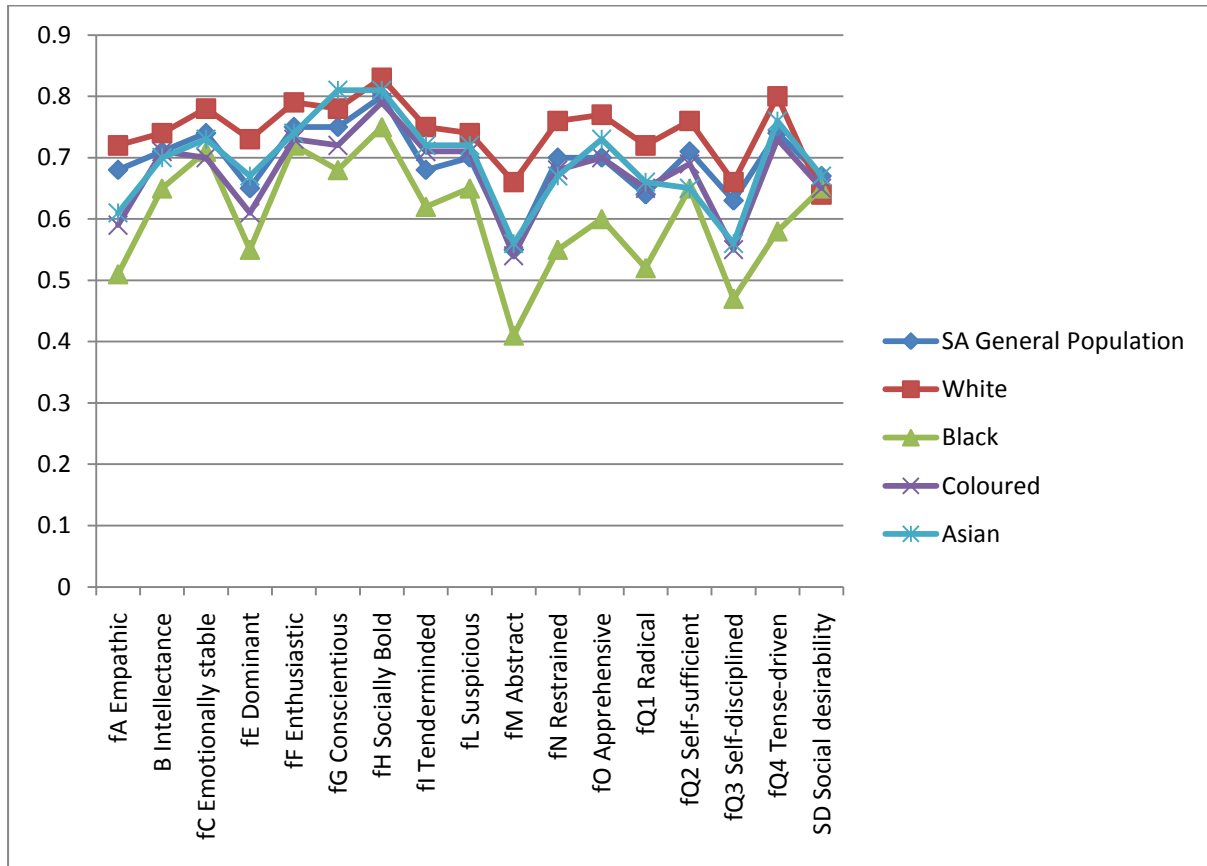
Variable	Descriptive Statistics : Age					
	Mean	Std.Dev	Minimum	Maximum	N	No.cases Missing
Age	30.73543	7.707752	17.00000	61.00000	1682	52



Internal consistency reliability coefficients for South African race groups

	European N = 5002	African N = 5803	Coloured N - 1124	Asian N = 1734
fA Empathic	0.72	0.51	0.59	0.61
B Intellectance	0.74	0.65	0.71	0.7
fC Emotionally stable	0.78	0.71	0.7	0.73
fE Dominant	0.73	0.55	0.61	0.67
fF Enthusiastic	0.79	0.72	0.73	0.74
fG Conscientious	0.78	0.68	0.72	0.81
fH Socially Bold	0.83	0.75	0.79	0.81
fI Tenderminded	0.75	0.62	0.71	0.72
fL Suspicious	0.74	0.65	0.71	0.72
fM Abstract	0.66	0.41	0.54	0.56
fN Restrained	0.76	0.55	0.68	0.67
fO Apprehensive	0.77	0.6	0.7	0.73
fQ1 Radical	0.72	0.52	0.65	0.66
fQ2 Self-sufficient	0.76	0.65	0.69	0.65
fQ3 Self-disciplined	0.66	0.47	0.55	0.56
fQ4 Tense-driven	0.8	0.58	0.73	0.76
SD Social desirability	0.64	0.65	0.65	0.67

Graph comparing internal consistency reliabilities for South African race groups



Notes: Data updated in 2010

SA General Population N = 22948, White n = 5002, Black n = 5803, Coloured n = 1124, Asian