

15FQ+ Reliability: Comparison between language groups

Sample composition

The sample consisted of respondents tested by Psytech SA and collaborators in the period leading up to February 2010. Biographical composition is reported separately for different language groups

Sample composition for the Indigenous language group

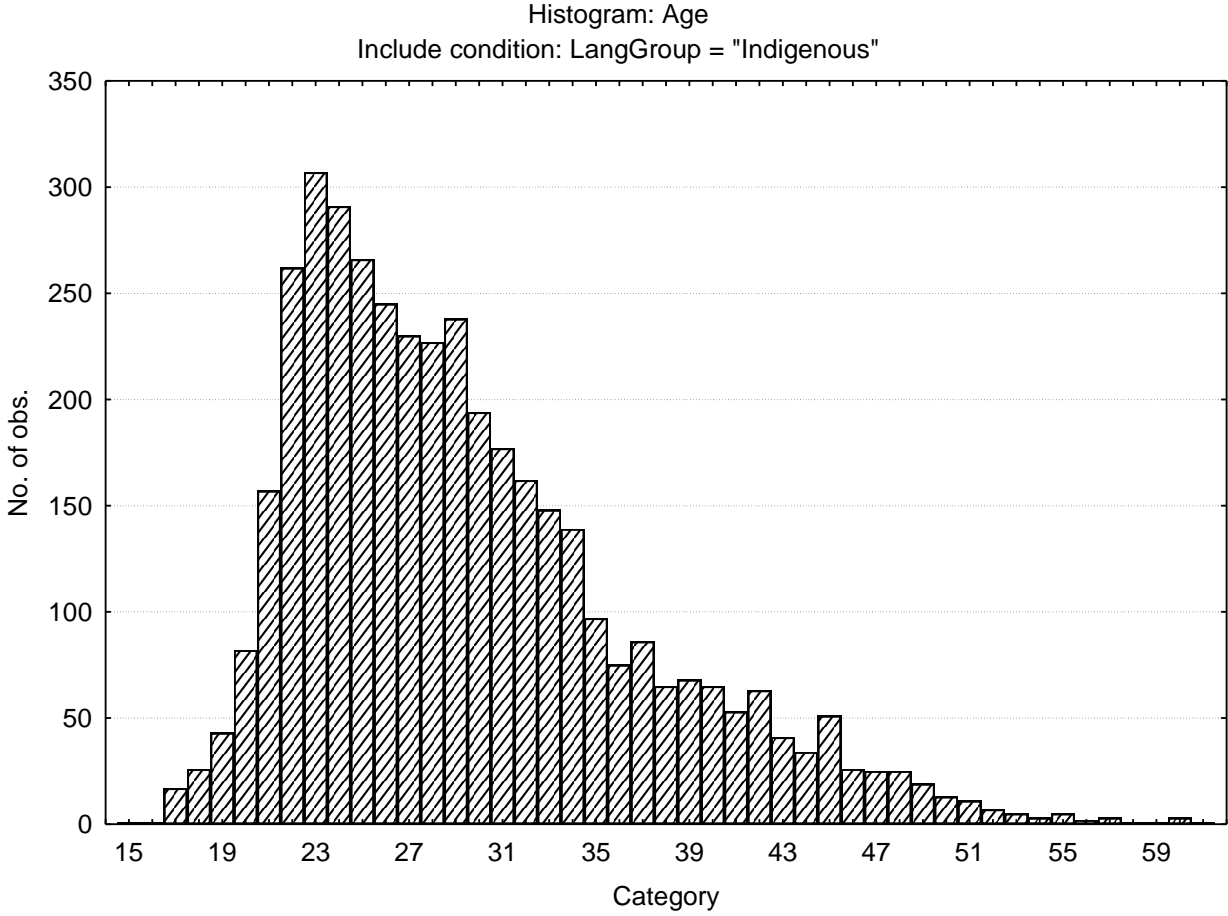
Category	Frequency table: Sex			
	Count	Cumulative Count	Percent	Cumulative Percent
F	1643	1643	39.63812	39.6381
M	2494	4137	60.16888	99.8070
Missing	8	4145	0.19300	100.0000

Category	Frequency table: Education			
	Count	Cumulative Count	Percent	Cumulative Percent
Grade 12	923	923	22.26779	22.2678
Degree	697	1620	16.81544	39.0832
Post Graduate	577	2197	13.92039	53.0036
Technikon	726	2923	17.51508	70.5187
University diploma	441	3364	10.63932	81.1580
Grade 10 or 11	86	3450	2.07479	83.2328
Vocational Training	169	3619	4.07720	87.3100
Diploma	103	3722	2.48492	89.7949
Certificate	95	3817	2.29192	92.0869
Missing	328	4145	7.91315	100.0000

Category	Frequency table: Language			
	Count	Cumulative Count	Percent	Cumulative Percent
isiZulu	1589	1589	38.33534	38.3353
isiXhosa	1048	2637	25.28347	63.6188
Sesotho	741	3378	17.87696	81.4958
Sepedi	288	3666	6.94813	88.4439
Xitsonga	184	3850	4.43908	92.8830
Tshivenda	137	3987	3.30519	96.1882
siSwati	102	4089	2.46080	98.6490
isiNdebele	56	4145	1.35103	100.0000
Missing	0	4145	0.00000	100.0000

Category	Frequency table: Race Group			
	Count	Cumulative Count	Percent	Cumulative Percent
African	4077	4077	98.35947	98.3595
European	18	4095	0.43426	98.7937
Coloured	7	4102	0.16888	98.9626
Asian	13	4115	0.31363	99.2762
Missing	30	4145	0.72376	100.0000

Variable	Descriptive Statistics : Age					
	Mean	Std.Dev	Minimum	Maximum	N	No.cases Missing
Age	29.48362	7.315113	15.00000	62.00000	4061	84



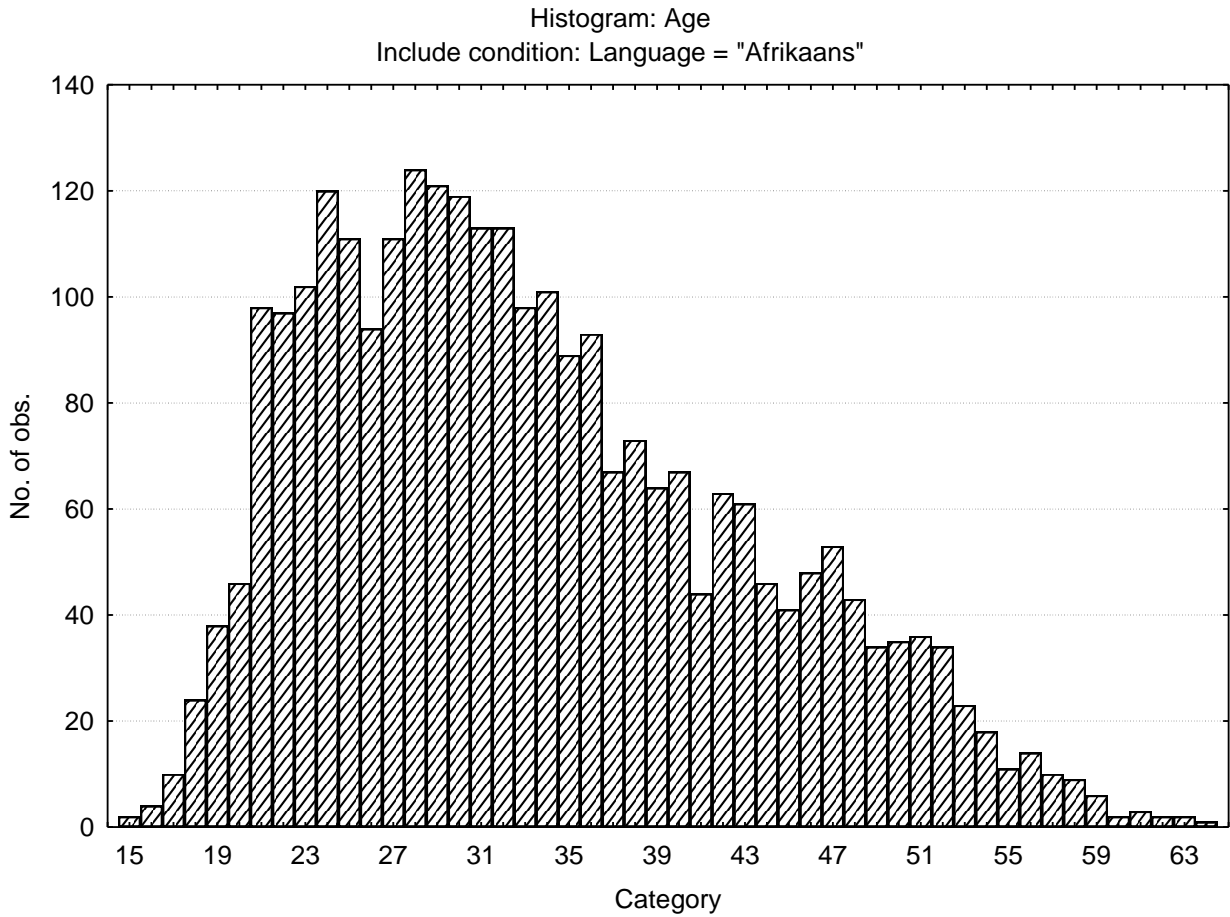
Sample composition for the Afrikaans language group

Category	Frequency table: Sex			
	Count	Cumulative Count	Percent	Cumulative Percent
F	980	980	34.30172	34.3017
M	1870	2850	65.45327	99.7550
Missing	7	2857	0.24501	100.0000

Category	Frequency table: Education			
	Count	Cumulative Count	Percent	Cumulative Percent
Grade 12	951	951	33.28666	33.2867
Degree	457	1408	15.99580	49.2825
Post Graduate	383	1791	13.40567	62.6881
Technikon	301	2092	10.53553	73.2237
University diploma	150	2242	5.25026	78.4739
Grade 10 or 11	117	2359	4.09520	82.5691
Vocational Training	106	2465	3.71019	86.2793
Diploma	21	2486	0.73504	87.0144
Certificate	24	2510	0.84004	87.8544
Missing	347	2857	12.14561	100.0000

Category	Frequency table: Race Group			
	Count	Cumulative Count	Percent	Cumulative Percent
African	74	74	2.59013	2.5901
European	2399	2473	83.96920	86.5593
Coloured	315	2788	11.02555	97.5849
Asian	5	2793	0.17501	97.7599
Missing	64	2857	2.24011	100.0000

Variable	Descriptive Statistics: age					
	Mean	Std.Dev	Minimum	Maximum	N	No.cases Missing
Age	33.44668	9.611198	15.00000	71.00000	2738	119



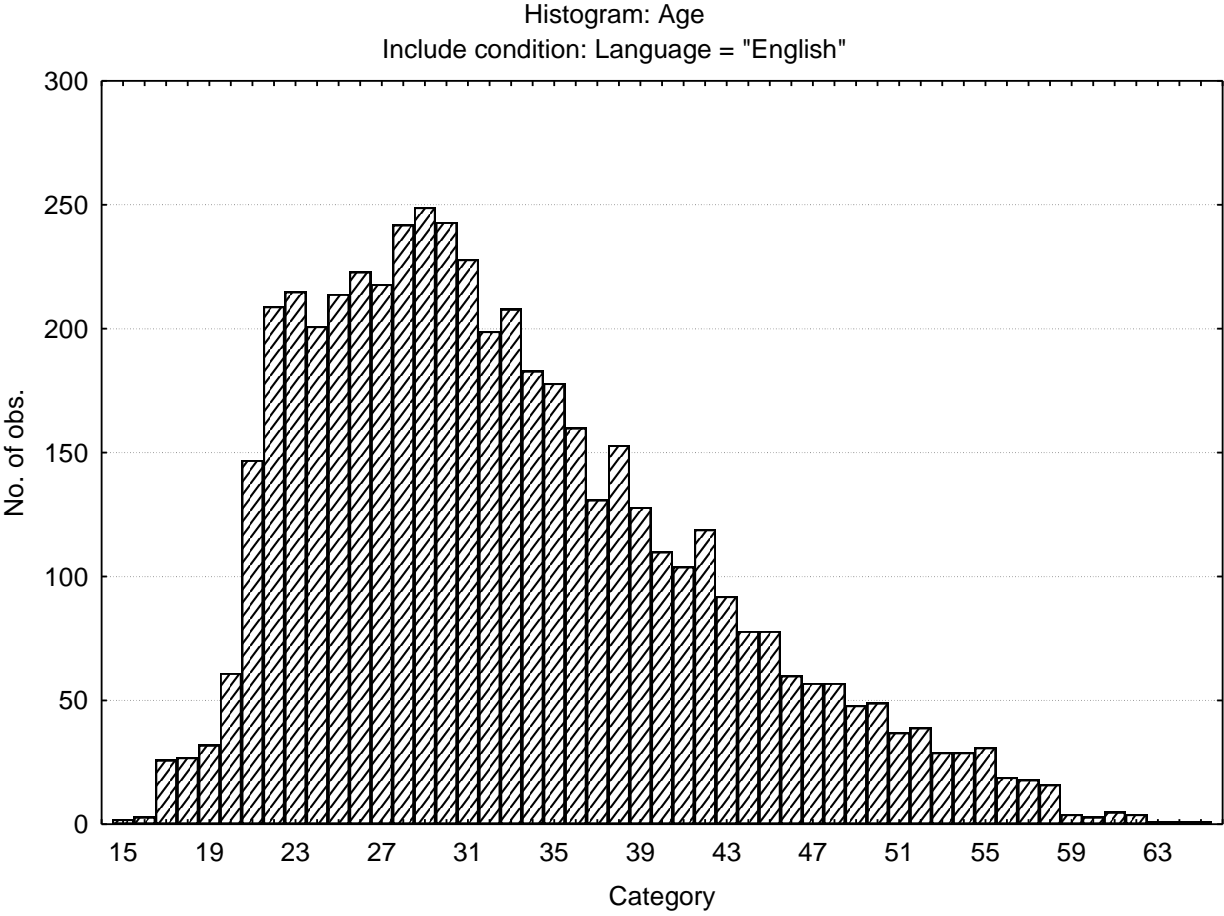
Sample composition for the English language group

Category	Frequency table: Sex			
	Count	Cumulative Count	Percent	Cumulative Percent
F	2007	2007	39.33751	39.3375
M	3077	5084	60.30968	99.6472
Missing	18	5102	0.35280	100.0000

Category	Frequency table: Education			
	Count	Cumulative Count	Percent	Cumulative Percent
Grade 12	1651	1651	32.35986	32.3599
Degree	830	2481	16.26813	48.6280
Post Graduate	768	3249	15.05292	63.6809
Technikon	517	3766	10.13328	73.8142
University diploma	456	4222	8.93767	82.7519
Grade 10 or 11	146	4368	2.86162	85.6135
Vocational Training	162	4530	3.17523	88.7887
Diploma	85	4615	1.66601	90.4547
Certificate	19	4634	0.37240	90.8271
Missing	468	5102	9.17287	100.0000

Category	Frequency table: Race Group			
	Count	Cumulative Count	Percent	Cumulative Percent
African	342	342	6.70325	6.7033
European	2300	2642	45.08036	51.7836
Coloured	745	3387	14.60212	66.3857
Asian	1587	4974	31.10545	97.4912
Missing	128	5102	2.50882	100.0000

Variable	Descriptive Statistics : Age					
	Mean	Std.Dev	Minimum	Maximum	N	No.cases Missing
Age	32.84745	8.940359	15.00000	68.00000	4969	133



Internal consistency reliability coefficients for different language groups

	Afrikaans N = 2857	English N = 5102	Indigenous N = 4145
fA Empathic	0.71	0.71	0.51
B Intellectance	0.73	0.74	0.64
fC Emotionally stable	0.77	0.76	0.7
fE Dominant	0.73	0.68	0.54
fF Enthusiastic	0.78	0.75	0.71
fG Conscientious	0.76	0.76	0.68
fH Socially Bold	0.83	0.82	0.74
fI Tenderminded	0.75	0.72	0.61
fL Suspicious	0.73	0.73	0.64
fM Abstract	0.63	0.63	0.38
fN Restrained	0.75	0.74	0.53
fO Apprehensive	0.76	0.74	0.6
fQ1 Radical	0.68	0.7	0.52
fQ2 Self-sufficient	0.75	0.71	0.63
fQ3 Self-disciplined	0.62	0.63	0.46
fQ4 Tense-driven	0.8	0.78	0.57
SD Social desirability	0.64	0.67	0.62

Graph of reliability coefficients for different language groups

