

AdaptG South African Calibration Biographical Information

The AdaptG is an adaptive IRT assessment that measures cognitive ability, both crystallized and fluid intelligence. It contains two tests, Numeric Reasoning and Verbal Reasoning, that tap crystallized intelligence and one test, Abstract Reasoning, that is a good measure of crystallized intelligence. The overall test score, which is a composite of Numeric Reasoning, Abstract Reasoning, and Verbal Reasoning, provides an excellent measure of general cognitive ability.

AdaptG Verbal

Category	Frequency table: Sex			
	Count	Cumulative Count	Percent	Cumulative Percent
F	2528	2528	52,32871	52,3287
M	2290	4818	47,40219	99,7309
U	11	4829	0,22770	99,9586
Missing	2	4831	0,04140	100,0000

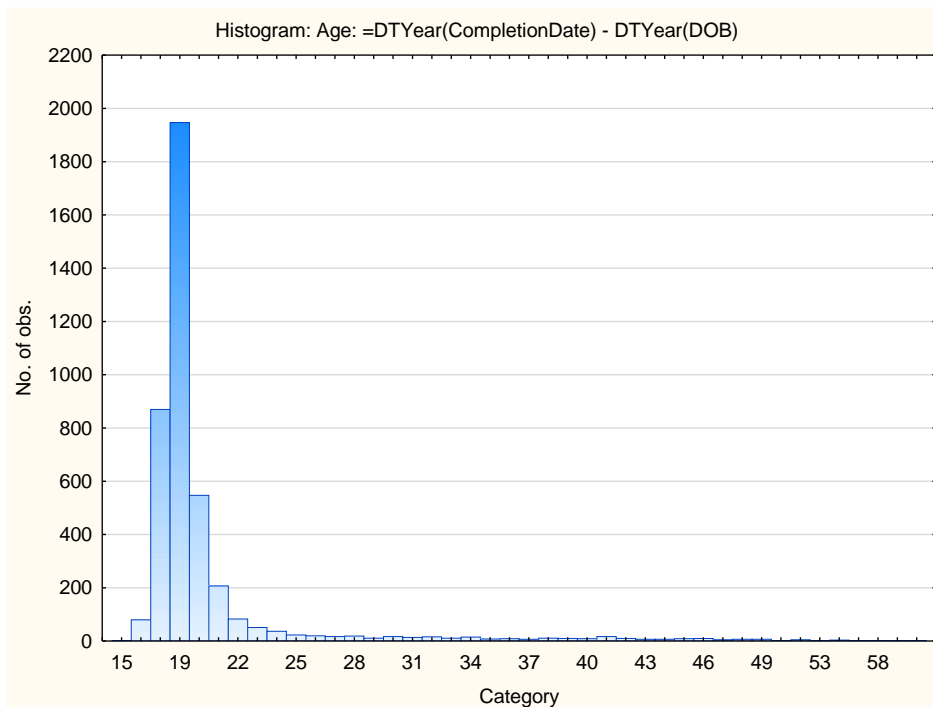
Category	Frequency table: Education			
	Count	Cumulative Count	Percent	Cumulative Percent
Post Graduate	79	79	1,63527	1,6353
Tertiary	368	447	7,61747	9,2527
Grade 12	3365	3812	69,65432	78,9071
Tertiary Cert / Trade	190	4002	3,93293	82,8400
Missing	829	4831	17,16001	100,0000

Category	Frequency table: Race			
	Count	Cumulative Count	Percent	Cumulative Percent
Indian	81	81	1,72340	1,7234
African	1324	1405	28,17021	29,8936
Coloured	133	1538	2,82979	32,7234
European	2548	4086	54,21277	86,9362
Asian	39	4125	0,82979	87,7660
Missing	575	4700	12,23404	100,0000

Category	Frequency table: Language			
	Count	Cumulative Count	Percent	Cumulative Percent
English	1505	1505	32,02128	32,0213
Afrikaans	2166	3671	46,08511	78,1064
Setswana	173	3844	3,68085	81,7872
isiXhosa	64	3908	1,36170	83,1489
Xitsonga	18	3926	0,38298	83,5319
Sesotho	92	4018	1,95745	85,4894
siSwati	36	4054	0,76596	86,2553
Sepedi	42	4096	0,89362	87,1489
isiZulu	80	4176	1,70213	88,8511
Tshivenda	18	4194	0,38298	89,2340
isiNdebele	10	4204	0,21277	89,4468
Missing	496	4700	10,55319	100,0000

Category	Frequency table: Language Group			
	Count	Cumulative Count	Percent	Cumulative Percent
English	1505	1505	32,02128	32,0213
Afrikaans	2166	3671	46,08511	78,1064
Indigenous	533	4204	11,34043	89,4468
Missing	496	4700	10,55319	100,0000

Variable	Descriptive Statistics: Age					
	Mean	Std.Dev	Minimum	Maximum	N	Missing cases
Age	20,41600	5,120810	15,00000	66,00000	4137	563



AdaptG Numerical

Category	Frequency table: Sex			
	Count	Cumulative Count	Percent	Cumulative Percent
M	2201	2201	47,27234	47,2723
F	2444	4645	52,49141	99,7637
U	10	4655	0,21478	99,9785
Missing	1	4656	0,02148	100,0000

Category	Frequency table: Education			
	Count	Cumulative Count	Percent	Cumulative Percent
Post Graduate	73	73	1,56787	1,5679
Tertiary	354	427	7,60309	9,1710
Grade 12	3258	3685	69,97423	79,1452
Tertiary Cert / Trade	177	3862	3,80155	82,9467
Missing	794	4656	17,05326	100,0000

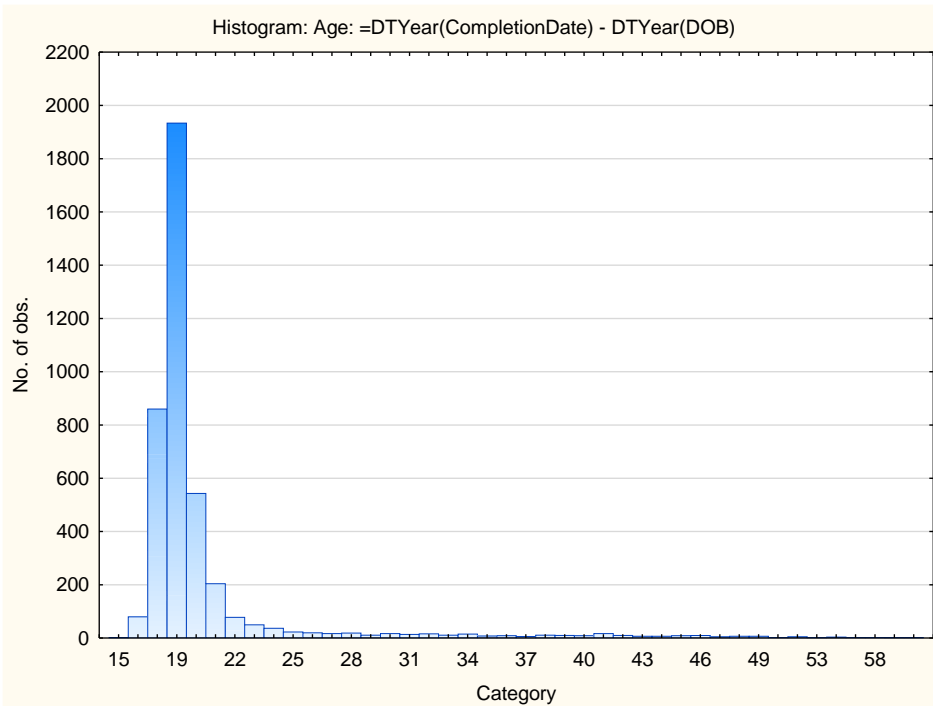
Category	Frequency table: Race			
	Count	Cumulative Count	Percent	Cumulative Percent
African	1303	1303	27,98540	27,9854

Category	Frequency table: Race			
	Count	Cumulative Count	Percent	Cumulative Percent
European	2535	3838	54,44588	82,4313
Indian	79	3917	1,69674	84,1280
Coloured	131	4048	2,81357	86,9416
Asian	39	4087	0,83763	87,7792
Missing	569	4656	12,22079	100,0000

Category	Frequency table: Language			
	Count	Cumulative Count	Percent	Cumulative Percent
isiXhosa	63	63	1,35309	1,3531
English	1486	1549	31,91581	33,2689
Setswana	168	1717	3,60825	36,8771
isiZulu	79	1796	1,69674	38,5739
siSwati	36	1832	0,77320	39,3471
Sesotho	92	1924	1,97595	41,3230
Tshivenda	17	1941	0,36512	41,6881
Afrikaans	2156	4097	46,30584	87,9940
Xitsonga	18	4115	0,38660	88,3806
Sepedi	42	4157	0,90206	89,2826
isiNdebele	10	4167	0,21478	89,4974
Missing	489	4656	10,50258	100,0000

Category	Frequency table: Language Group			
	Count	Cumulative Count	Percent	Cumulative Percent
Indigenous	525	525	11,27577	11,2758
English	1486	2011	31,91581	43,1916
Afrikaans	2156	4167	46,30584	89,4974
Missing	489	4656	10,50258	100,0000

Variable	Descriptive Statistics: Age					
	Mean	Std.Dev	Minimum	Maximum	N	Missing Cases
Age	20,41976	5,134840	15,00000	66,00000	4100	556



AdaptG Abstract

Category	Frequency table: Sex			
	Count	Cumulative Count	Percent	Cumulative Percent
M	2222	2222	47,27660	47,2766
F	2467	4689	52,48936	99,7660
U	10	4699	0,21277	99,9787
Missing	1	4700	0,02128	100,0000

Category	Frequency table: Education			
	Count	Cumulative Count	Percent	Cumulative Percent
Grade 12	3283	3283	69,85106	69,8511
Tertiary Cert / Trade	179	3462	3,80851	73,6596
Tertiary	360	3822	7,65957	81,3191
Post Graduate	73	3895	1,55319	82,8723
Missing	805	4700	17,12766	100,0000

Category	Frequency table: Race			
	Count	Cumulative Count	Percent	Cumulative Percent
Indian	81	81	1,72340	1,7234

Category	Frequency table: Race			
	Count	Cumulative Count	Percent	Cumulative Percent
African	1324	1405	28,17021	29,8936
Coloured	133	1538	2,82979	32,7234
European	2548	4086	54,21277	86,9362
Asian	39	4125	0,82979	87,7660
Missing	575	4700	12,23404	100,0000

Category	Frequency table: Language			
	Count	Cumulative Count	Percent	Cumulative Percent
English	1505	1505	32,02128	32,0213
Afrikaans	2166	3671	46,08511	78,1064
Setswana	173	3844	3,68085	81,7872
isiXhosa	64	3908	1,36170	83,1489
Xitsonga	18	3926	0,38298	83,5319
Sesotho	92	4018	1,95745	85,4894
siSwati	36	4054	0,76596	86,2553
Sepedi	42	4096	0,89362	87,1489
isiZulu	80	4176	1,70213	88,8511
Tshivenda	18	4194	0,38298	89,2340
isiNdebele	10	4204	0,21277	89,4468
Missing	496	4700	10,55319	100,0000

Category	Frequency table: Language Group			
	Count	Cumulative Count	Percent	Cumulative Percent
English	1505	1505	32,02128	32,0213
Afrikaans	2166	3671	46,08511	78,1064
Indigenous	533	4204	11,34043	89,4468
Missing	496	4700	10,55319	100,0000

Variable	Descriptive Statistics: Age					
	Mean	Std.Dev	Minimum	Maximum	N	Missing Cases
Age	20,41600	5,120810	15,00000	66,00000	4137	563

Histogram: Age: =DTYear(CompletionDate) - DTYear(DOB)

