

# Clerical Test Battery 2 (CTB2)

## Norm Group: SA Aggregate Population, Updated 2022

### Sample Composition

The sample consisted of respondents who had completed any of the subtests of the Clerical Test Battery (CTB2) battery in the period March 2013 to March 2022. Since not all the respondents completed all the subtests, biographical information is reported separately.

### Sample composition: Clerical Checking Subtest (CTB2C)

Category	Frequency table: Sex			
	Count	Cumulative Count	Percent	Cumulative Percent
F	8722	8722	56.40926	56.4093
M	6676	15398	43.17682	99.5861
Missing	64	15462	0.41392	100.0000

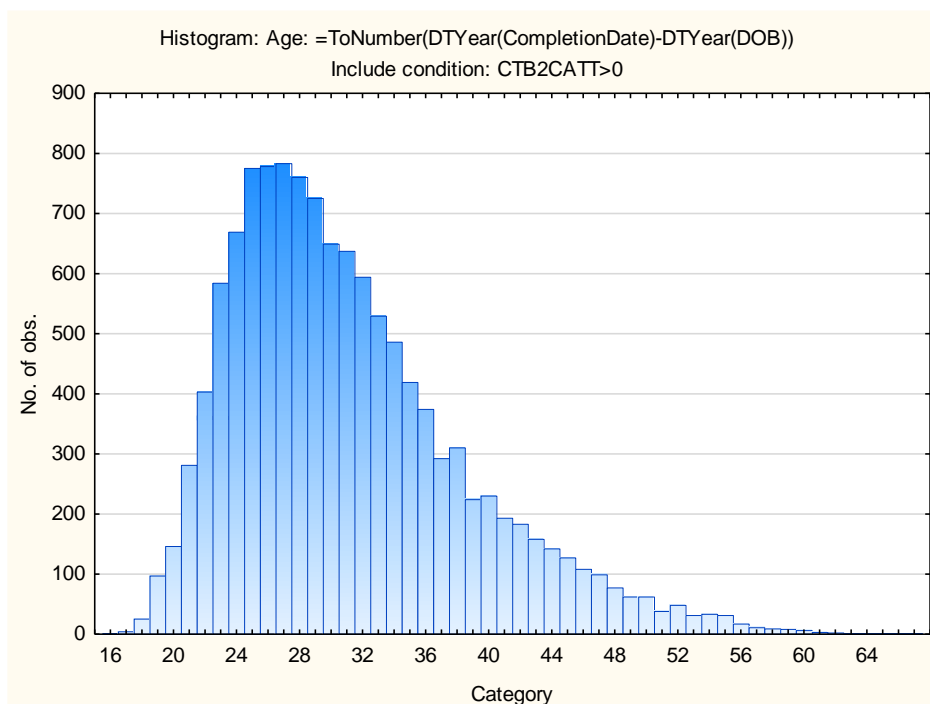
Category	Frequency table: Education			
	Count	Cumulative Count	Percent	Cumulative Percent
Grade 12	3437	3437	22.22869	22.2287
Tertiary Cert / Trade	2654	6091	17.16466	39.3934
Tertiary	2025	8116	13.09662	52.4900
Post Graduate	585	8701	3.78347	56.2734
< Matric	47	8748	0.30397	56.5774
Missing	6714	15462	43.42258	100.0000

Category	Frequency table: Race			
	Count	Cumulative Count	Percent	Cumulative Percent
Coloured	1153	1153	7.45699	7.4570
African	5961	7114	38.55258	46.0096
Indian	309	7423	1.99845	48.0080
Asian	145	7568	0.93778	48.9458
European	784	8352	5.07050	54.0163
Missing	7110	15462	45.98370	100.0000

Category	Frequency table: Language			
	Count	Cumulative Count	Percent	Cumulative Percent
English	3938	3938	25.46889	25.4689
Afrikaans	761	4699	4.92174	30.3906
Setswana	528	5227	3.41482	33.8055
isiXhosa	1046	6273	6.76497	40.5704
Xitsonga	176	6449	1.13827	41.7087
Tshivenda	165	6614	1.06713	42.7758
isiZulu	1045	7659	6.75850	49.5343
Sepedi	483	8142	3.12379	52.6581
isiNdebele	75	8217	0.48506	53.1432
siSwati	54	8271	0.34924	53.4924
Sesotho	386	8657	2.49644	55.9889
Missing	6805	15462	44.01112	100.0000

Category	Frequency table: Language Group			
	Count	Cumulative Count	Percent	Cumulative Percent
English	3938	3938	25.46889	25.4689
Afrikaans	761	4699	4.92174	30.3906
Indigenous	3958	8657	25.59824	55.9889
Missing	6805	15462	44.01112	100.0000

Variable	Descriptive Statistics: Age					
	Mean	Std.Dev	Minimum	Maximum	N	No.cases Missing
Age	31.10901	7.460513	16.00000	69.00000	12228	3234



## Sample composition: Numerical Subtest (CTB2N)

Category	Frequency table: Sex			
	Count	Cumulative Count	Percent	Cumulative Percent
F	8479	8479	56.44013	56.4401
M	6487	14966	43.18046	99.6206
Missing	57	15023	0.37942	100.0000

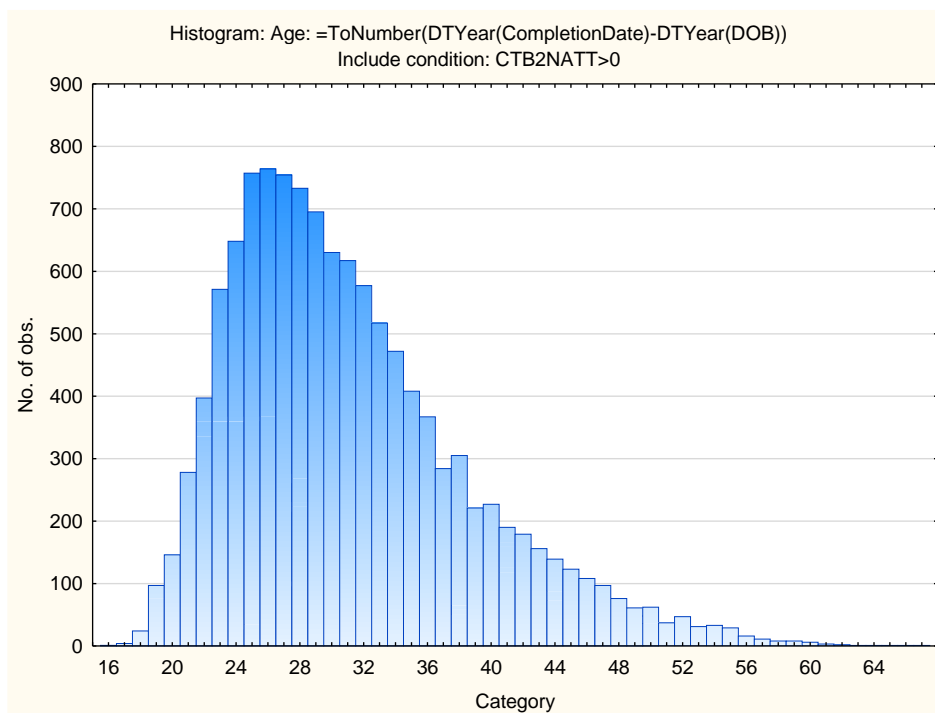
Category	Frequency table: Education			
	Count	Cumulative Count	Percent	Cumulative Percent
Grade 12	3416	3416	22.73847	22.7385
Tertiary Cert / Trade	2636	6052	17.54643	40.2849
Tertiary	2011	8063	13.38614	53.6710
Post Graduate	575	8638	3.82746	57.4985
< Matric	47	8685	0.31285	57.8114
Missing	6338	15023	42.18864	100.0000

Category	Frequency table: Race			
	Count	Cumulative Count	Percent	Cumulative Percent
Coloured	1143	1143	7.60833	7.6083
African	5929	7072	39.46615	47.0745
Indian	305	7377	2.03022	49.1047
Asian	143	7520	0.95187	50.0566
European	769	8289	5.11882	55.1754
Missing	6734	15023	44.82460	100.0000

Category	Frequency table: Language			
	Count	Cumulative Count	Percent	Cumulative Percent
English	3915	3915	26.06004	26.0600
Afrikaans	743	4658	4.94575	31.0058
Setswana	524	5182	3.48799	34.4938
isiXhosa	1043	6225	6.94269	41.4365
Xitsonga	175	6400	1.16488	42.6013
Tshivenda	164	6564	1.09166	43.6930
isiZulu	1040	7604	6.92272	50.6157
Sepedi	479	8083	3.18844	53.8042
isiNdebele	75	8158	0.49923	54.3034
siSwati	54	8212	0.35945	54.6629
Sesotho	385	8597	2.56274	57.2256
Missing	6426	15023	42.77441	100.0000

Category	Frequency table: Language Group			
	Count	Cumulative Count	Percent	Cumulative Percent
English	3915	3915	26.06004	26.0600
Afrikaans	743	4658	4.94575	31.0058
Indigenous	3939	8597	26.21980	57.2256
Missing	6426	15023	42.77441	100.0000

Variable	Descriptive Statistics: Age					
	Mean	Std.Dev	Minimum	Maximum	N	No.cases Missing
Age	31.12063	7.483273	16.00000	69.00000	11921	3102



## Sample composition: Clerical Spelling Subtest (CTB2S)

Category	Frequency table: Sex			
	Count	Cumulative Count	Percent	Cumulative Percent
F	7349	7349	58.50183	58.5018
M	5164	12513	41.10810	99.6099
Missing	49	12562	0.39007	100.0000

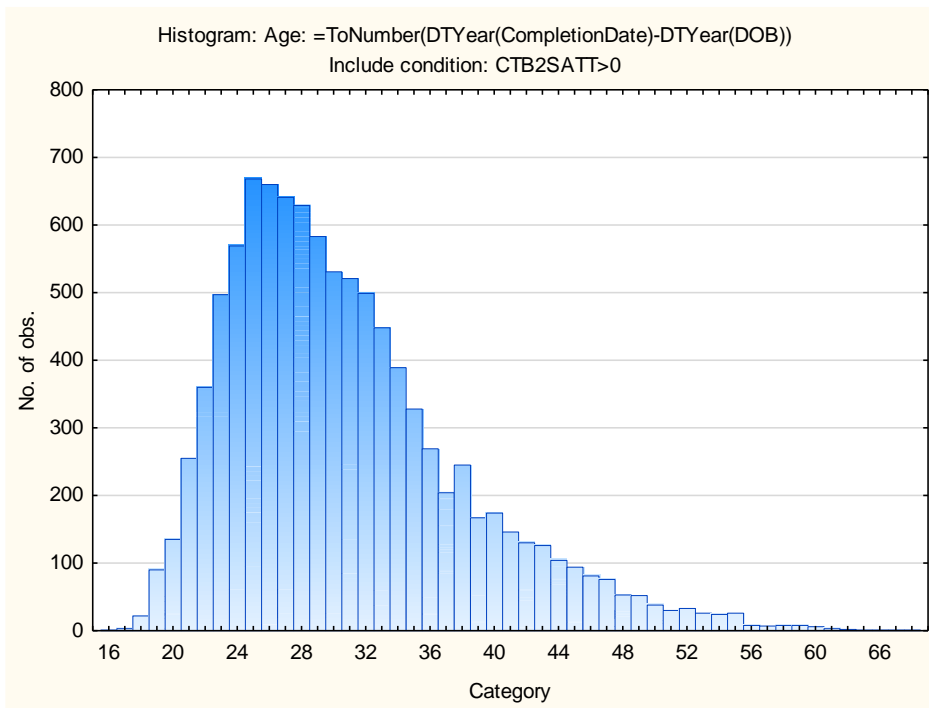
Category	Frequency table: Education			
	Count	Cumulative Count	Percent	Cumulative Percent
Grade 12	3124	3124	24.86865	24.8687
Tertiary Cert / Trade	2326	5450	18.51616	43.3848
Tertiary	1894	7344	15.07722	58.4620
Post Graduate	543	7887	4.32256	62.7846
< Matric	26	7913	0.20697	62.9916
Missing	4649	12562	37.00844	100.0000

Category	Frequency table: Race			
	Count	Cumulative Count	Percent	Cumulative Percent
Coloured	877	877	6.98137	6.9814
African	5521	6398	43.95001	50.9314
Indian	295	6693	2.34835	53.2797
Asian	118	6811	0.93934	54.2191
European	636	7447	5.06289	59.2820
Missing	5115	12562	40.71804	100.0000

Category	Frequency table: Language			
	Count	Cumulative Count	Percent	Cumulative Percent
English	3549	3549	28.25187	28.2519
Afrikaans	586	4135	4.66486	32.9167
Setswana	488	4623	3.88473	36.8015
isiXhosa	931	5554	7.41124	44.2127
Xitsonga	164	5718	1.30552	45.5182
Tshivenda	156	5874	1.24184	46.7601
isiZulu	958	6832	7.62617	54.3862
Sepedi	453	7285	3.60611	57.9924
isiNdebele	72	7357	0.57316	58.5655
siSwati	48	7405	0.38210	58.9476
Sesotho	328	7733	2.61105	61.5587
Missing	4829	12562	38.44133	100.0000

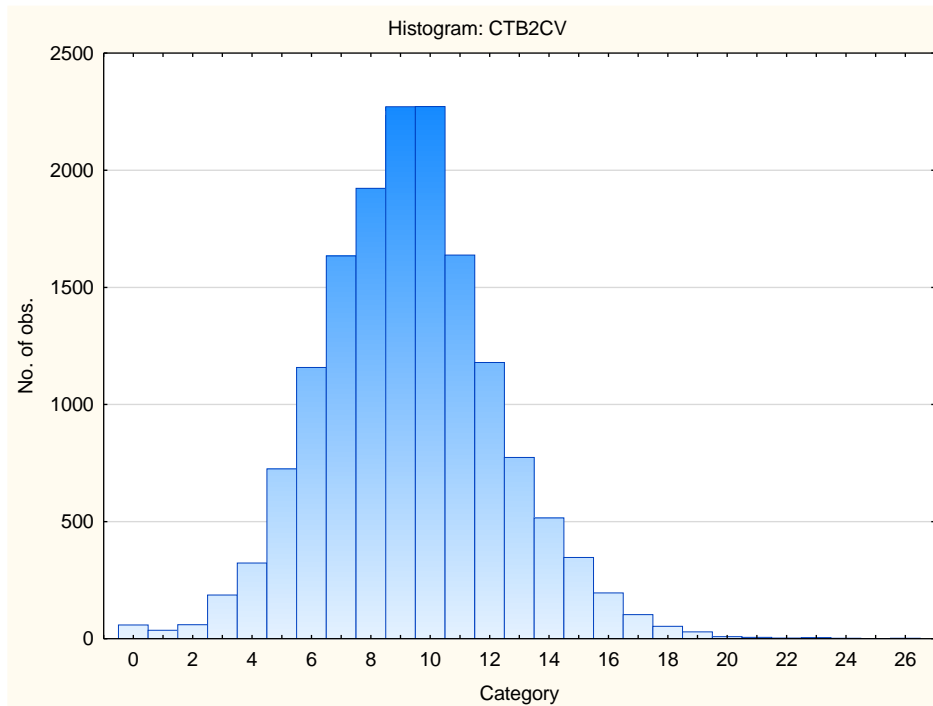
Category	Frequency table: Language Group			
	Count	Cumulative Count	Percent	Cumulative Percent
English	3549	3549	28.25187	28.2519
Afrikaans	586	4135	4.66486	32.9167
Indigenous	3598	7733	28.64194	61.5587
Missing	4829	12562	38.44133	100.0000

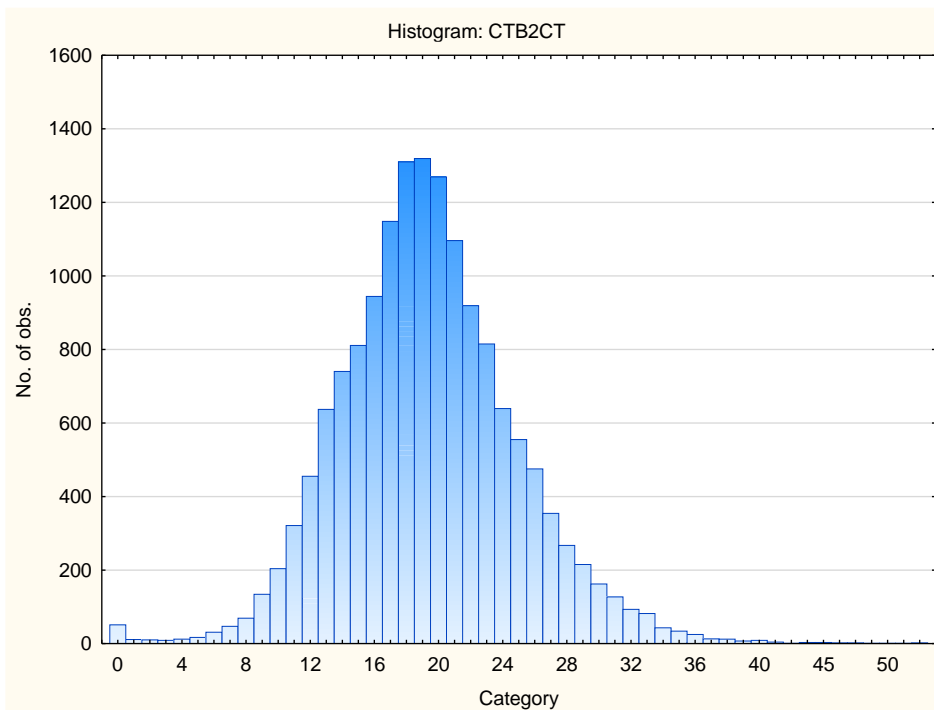
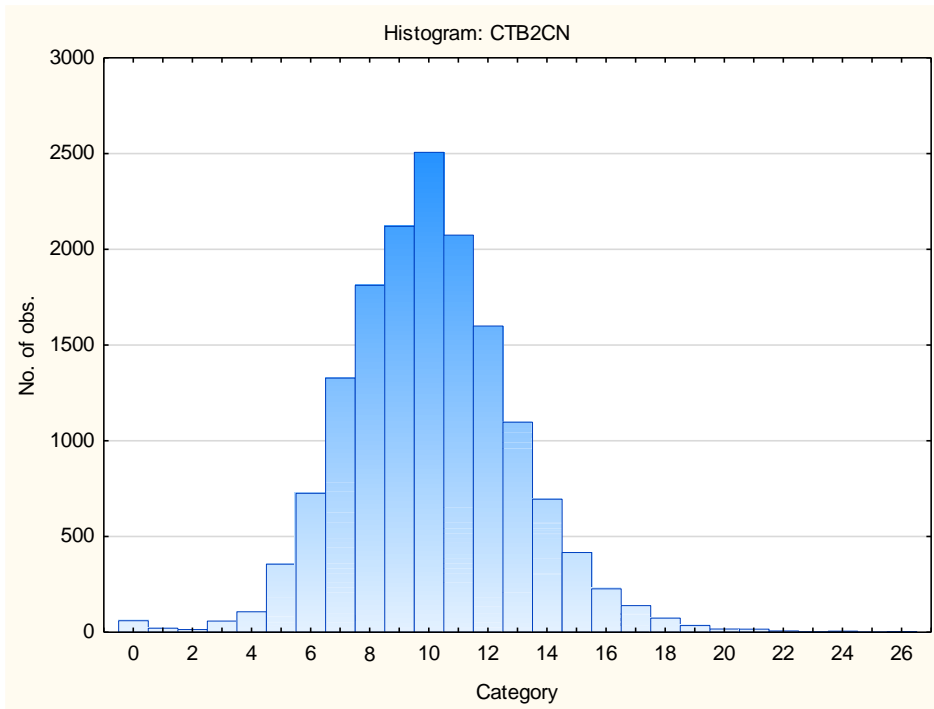
Variable	Descriptive Statistics: Age					
	Mean	Std.Dev	Minimum	Maximum	N	No.cases Missing
Age:	30.73318	7.359916	16.00000	69.00000	9973	2589

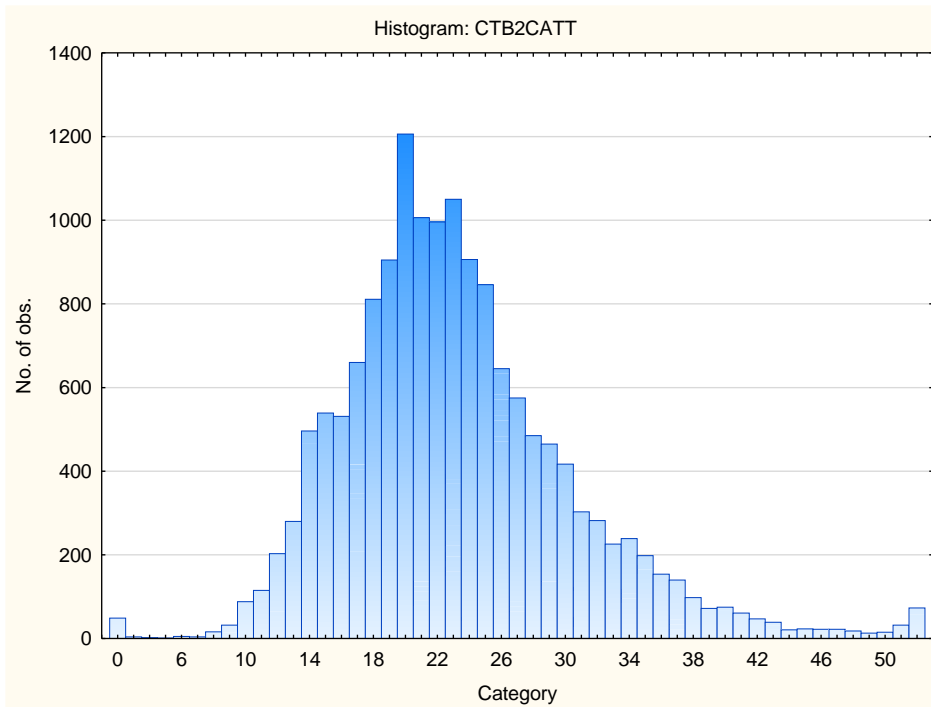


## Descriptive Statistics on Clerical Test Battery Subtests

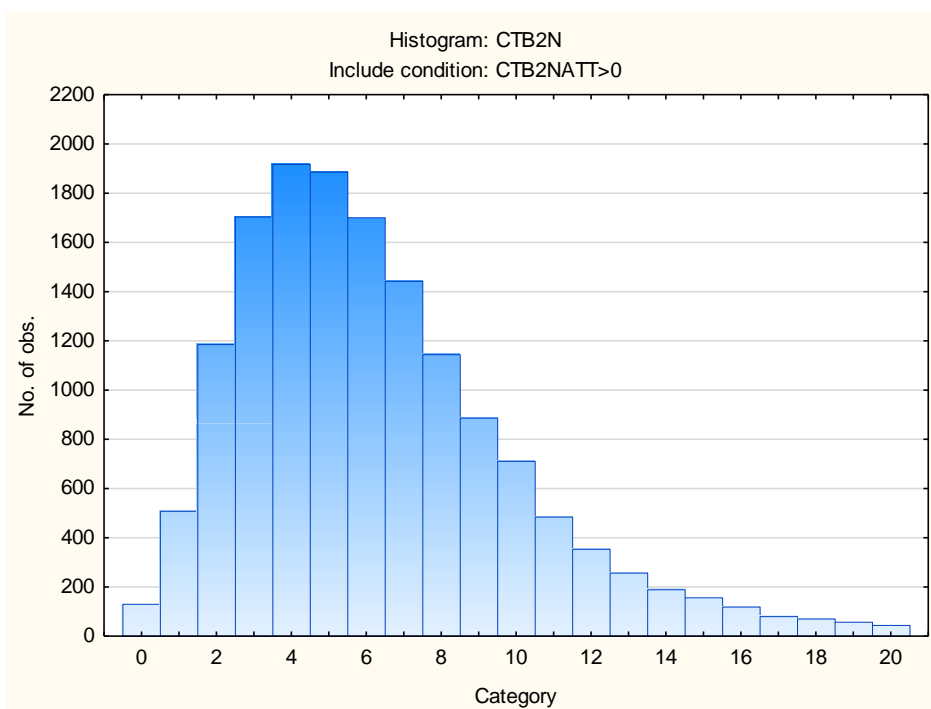
Variable	Descriptive Statistics: Clerical Checking Subtest					
	Mean	Std.Dev	Minimum	Maximum	N	No.cases Missing
CTB2CV	9.29818	2.996408	0.00	26.00000	15511	0
CTB2CN	10.05996	2.860255	0.00	26.00000	15511	0
CTB2CT	19.35813	5.505449	0.00	52.00000	15511	0
CTB2CATT	23.23145	7.273487	0.00	52.00000	15511	0

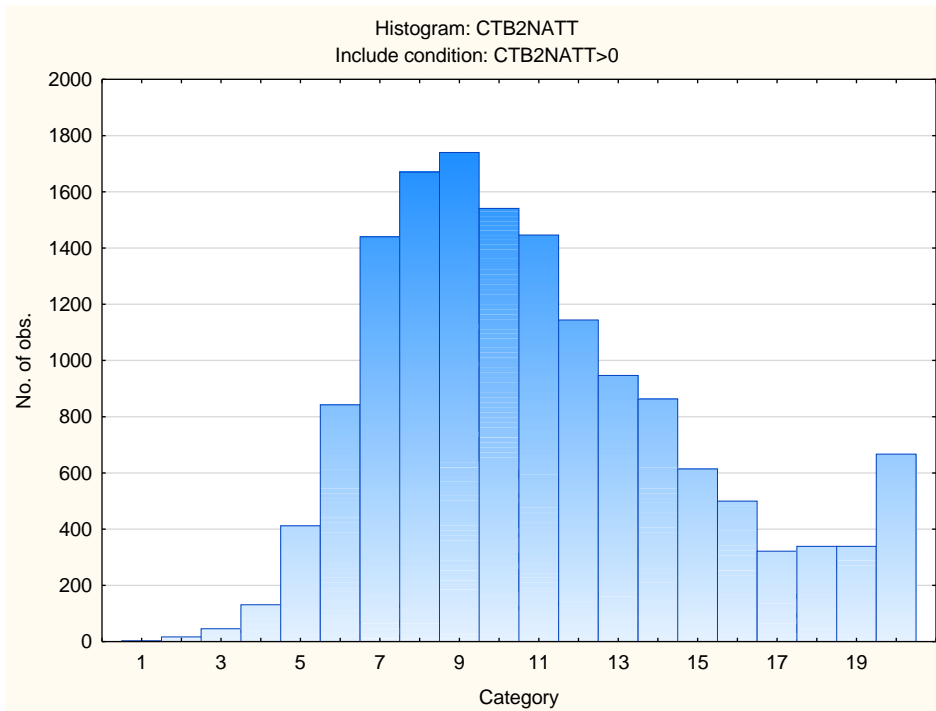




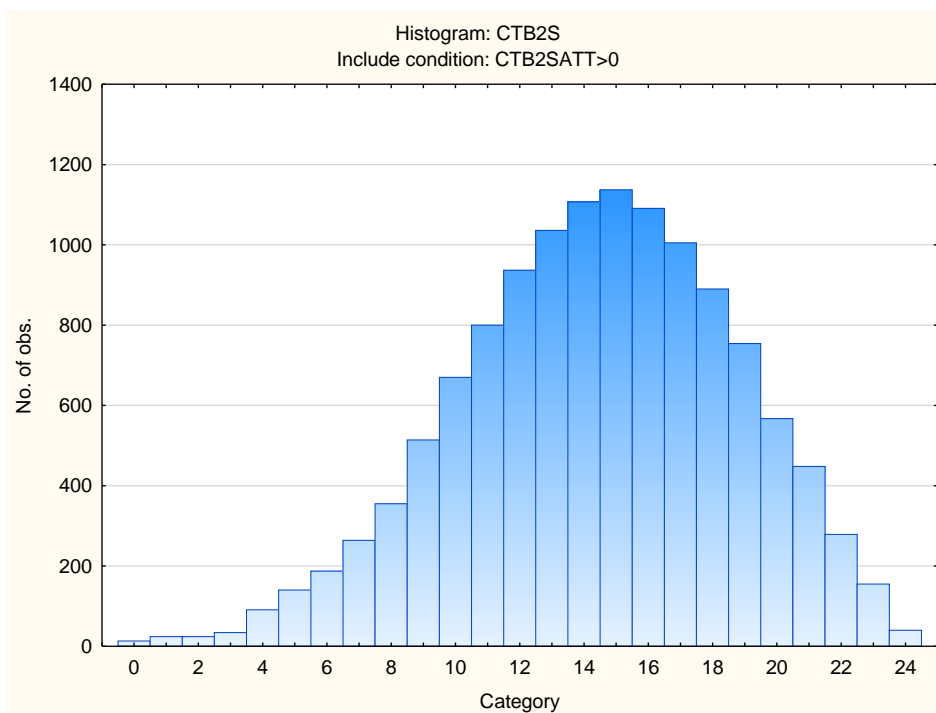


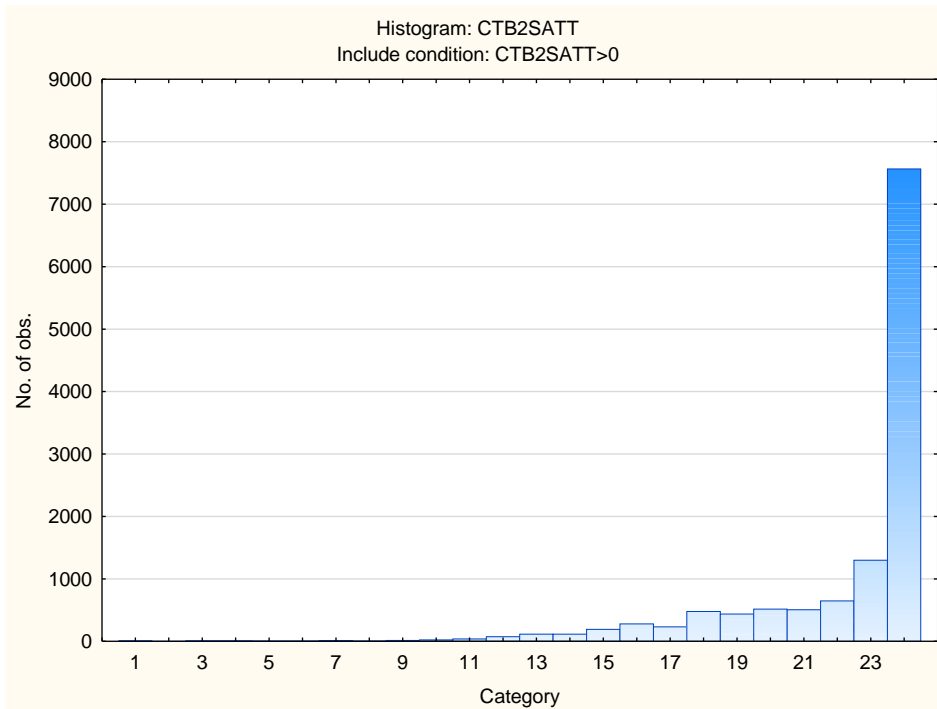
Variable	Descriptive Statistics: Numerical Reasoning Subtest					
	Mean	Std.Dev	Minimum	Maximum	N	No.cases Missing
CTB2N	6.25694	3.627366	0.000000	20.00000	15023	0
CTB2NATT	10.97750	3.933565	1.000000	20.00000	15023	0



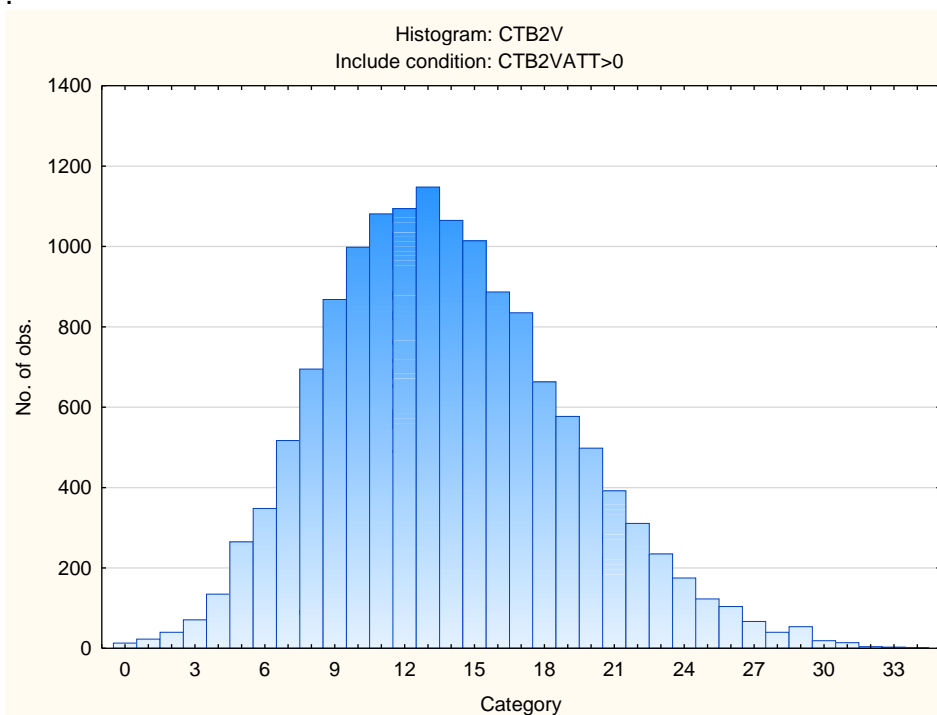


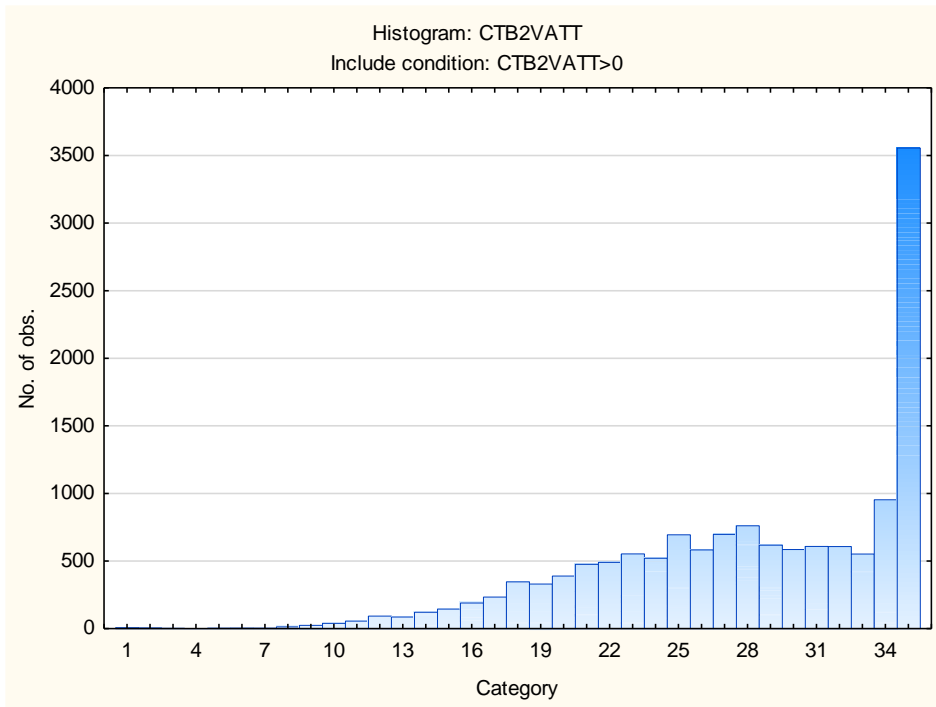
Variable	Descriptive Statistics: Spelling Subtest					
	Mean	Std.Dev	Minimum	Maximum	N	No.cases Missing
CTB2S	14.38760	4.282588	0.000000	24.00000	12562	0
CTB2SATT	22.26007	3.042220	1.000000	24.00000	12562	0





Variable	Descriptive Statistics: Verbal Reasoning Subtest					
	Mean	Std.Dev	Minimum	Maximum	N	No.cases Missing
CTB2V	13.82521	5.171003	0.000000	34.000000	14377	0
CTB2VATT	28.02330	6.514277	1.000000	35.000000	14377	0





## Stanine Table

Scales	Stanine Groups								
	S9_1	S9_2	S9_3	S9_4	S9_5	S9_6	S9_7	S9_8	S9_9
Verbal Reasoning	0-4	5-7	8-9	10-12	13-15	16-17	18-20	21-22	23-34
Numerical Ability	0--1	0-1	2-3	4-5	6-7	8-8	9-10	11-12	13-20
Clerical Checking - Verbal	0-4	5-5	6-7	8-8	9-10	11-11	12-13	14-14	15-26
Clerical Checking - Numerical	0-5	6-6	7-7	8-9	10-10	11-12	13-13	14-15	16-26
Clerical Checking - Total	0-9	10-12	13-15	16-17	18-20	21-23	24-26	27-28	29-52
Spelling	0-6	7-9	10-11	12-13	14-15	16-17	18-19	20-21	22-24