

Clerical Test Battery 2 (CTB2)

Norm Group: SA English Language Speakers, Updated 2022

Sample Composition

The sample consisted of respondents who had completed any of the subtests of the Clerical Test Battery (CTB2) battery in the period March 2013 to March 2022. Since not all the respondents completed all the subtests, biographical information is reported separately.

Sample Composition: Clerical Checking Subtest (CTB2C)

Category	Frequency table: Sex			
	Count	Cumulative Count	Percent	Cumulative Percent
F	2493	2493	63.30625	63.3062
M	1432	3925	36.36364	99.6699
Missing	13	3938	0.33012	100.0000

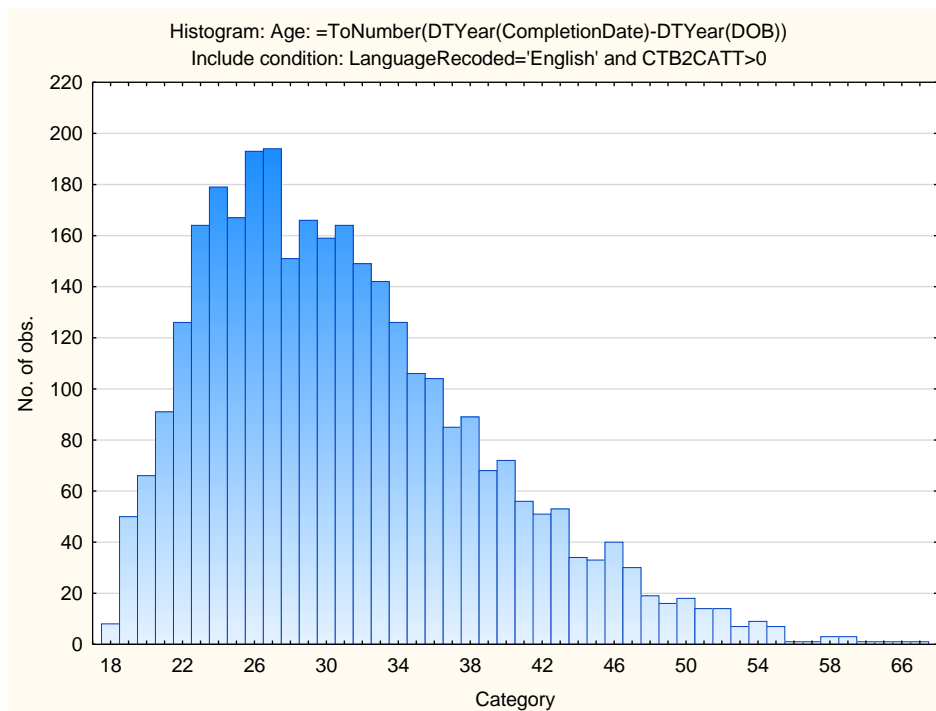
Category	Frequency table: Education			
	Count	Cumulative Count	Percent	Cumulative Percent
Grade 12	1552	1552	39.41087	39.4109
Tertiary Cert / Trade	1054	2606	26.76486	66.1757
Tertiary	898	3504	22.80345	88.9792
Post Graduate	260	3764	6.60234	95.5815
< Matric	14	3778	0.35551	95.9370
Missing	160	3938	4.06298	100.0000

Category	Frequency table: Race			
	Count	Cumulative Count	Percent	Cumulative Percent
Coloured	890	890	22.60030	22.6003
African	1884	2774	47.84154	70.4418
Indian	303	3077	7.69426	78.1361
Asian	142	3219	3.60589	81.7420
European	353	3572	8.96394	90.7059
Missing	366	3938	9.29406	100.0000

Category	Frequency table: Language			
	Count	Cumulative Count	Percent	Cumulative Percent
English	3938	3938	100.0000	100.0000
Missing	0	3938	0.0000	100.0000

Category	Frequency table: Language Group			
	Count	Cumulative Count	Percent	Cumulative Percent
English	3938	3938	100.0000	100.0000
Missing	0	3938	0.0000	100.0000

Variable	Descriptive Statistics: Age					
	Mean	Std.Dev	Minimum	Maximum	N	No. cases Missing
Age	31.15563	7.764698	18.00000	68.00000	3232	706



Sample Composition: Numerical Subtest (CTB2N)

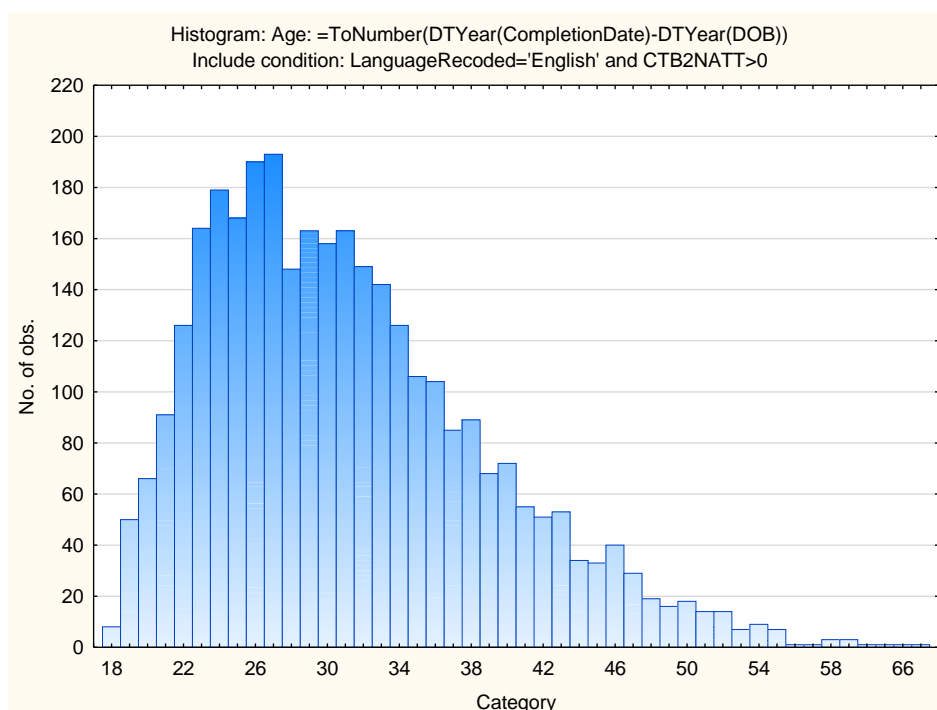
Category	Frequency table: Sex			
	Count	Cumulative Count	Percent	Cumulative Percent
F	2483	2483	63.42273	63.4227
M	1420	3903	36.27075	99.6935
Missing	12	3915	0.30651	100.0000

Category	Frequency table: Education			
	Count	Cumulative Count	Percent	Cumulative Percent
Grade 12	1547	1547	39.51469	39.5147
Tertiary Cert / Trade	1048	2595	26.76884	66.2835
Tertiary	890	3485	22.73308	89.0166
Post Graduate	256	3741	6.53895	95.5556
< Matric	14	3755	0.35760	95.9132
Missing	160	3915	4.08685	100.0000

Category	Frequency table: Race			
	Count	Cumulative Count	Percent	Cumulative Percent
Coloured	887	887	22.65645	22.6564
African	1874	2761	47.86718	70.5236
Indian	299	3060	7.63729	78.1609
Asian	140	3200	3.57599	81.7369
European	349	3549	8.91443	90.6513
Missing	366	3915	9.34866	100.0000

Category	Frequency table: Language			
	Count	Cumulative Count	Percent	Cumulative Percent
English	3915	3915	100.0000	100.0000
Missing	0	3915	0.0000	100.0000

Variable	Descriptive Statistics: Age					
	Mean	Std.Dev	Minimum	Maximum	N	No.cases Missing
Age	31.15719	7.771329	18.00000	68.00000	3219	696



Sample Composition: Clerical Spelling Subtest (CTB2S)

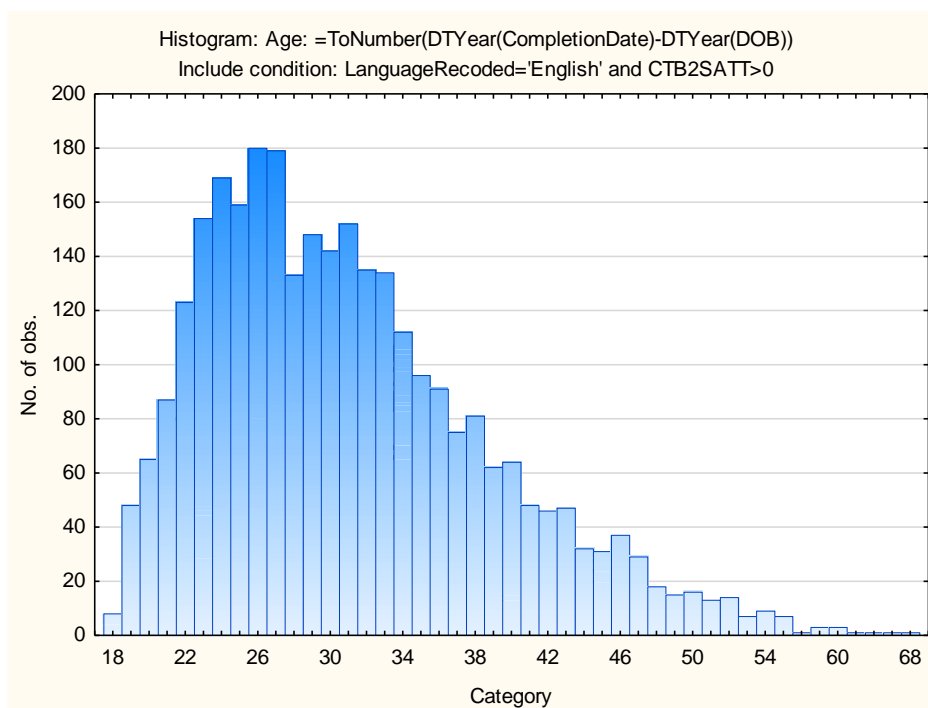
Category	Frequency table: Sex			
	Count	Cumulative Count	Percent	Cumulative Percent
F	2278	2278	64.18709	64.1871
M	1260	3538	35.50296	99.6901
Missing	11	3549	0.30995	100.0000

Category	Frequency table: Education			
	Count	Cumulative Count	Percent	Cumulative Percent
Grade 12	1403	1403	39.53226	39.5323
Tertiary Cert / Trade	933	2336	26.28910	65.8214
Tertiary	857	3193	24.14765	89.9690
Post Graduate	243	3436	6.84700	96.8160
< Matric	5	3441	0.14088	96.9569
Missing	108	3549	3.04311	100.0000

Category	Frequency table: Race			
	Count	Cumulative Count	Percent	Cumulative Percent
Coloured	689	689	19.41392	19.4139
African	1819	2508	51.25387	70.6678
Indian	290	2798	8.17132	78.8391
Asian	116	2914	3.26853	82.1076
European	287	3201	8.08679	90.1944
Missing	348	3549	9.80558	100.0000

Category	Frequency table: Language			
	Count	Cumulative Count	Percent	Cumulative Percent
English	3549	3549	100.0000	100.0000
Missing	0	3549	0.0000	100.0000

Variable	Descriptive Statistics: Age					
	Mean	Std.Dev	Minimum	Maximum	N	No.cases Missing
Age	31.06080	7.837350	18.00000	68.00000	2977	572



Sample Composition: Verbal Subtest (CTB2V)

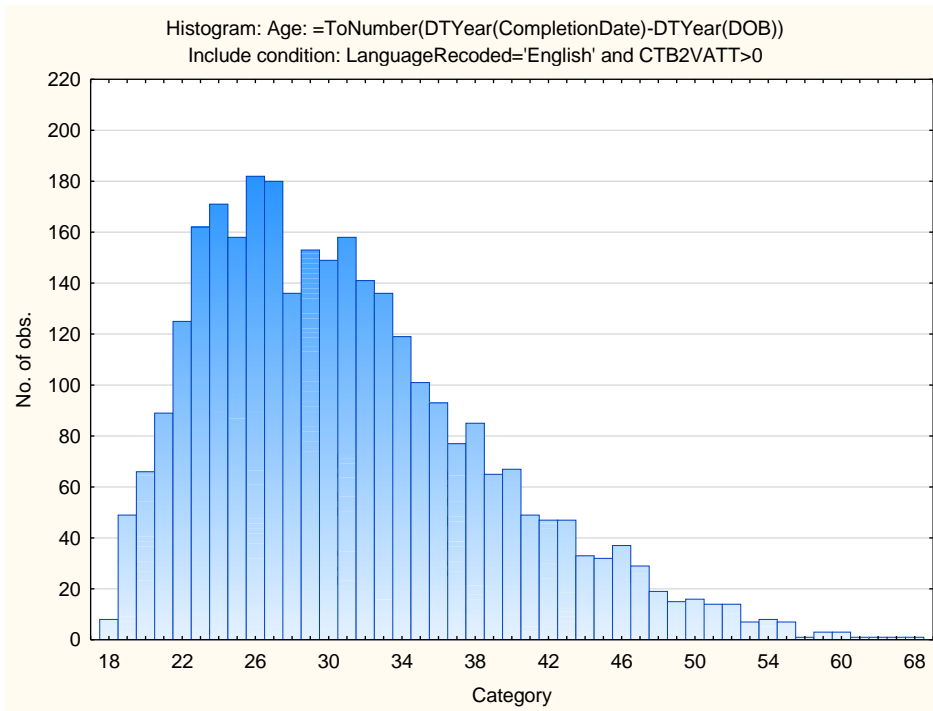
Category	Frequency table: Sex			
	Count	Cumulative Count	Percent	Cumulative Percent
F	2341	2341	62.76139	62.7614
M	1377	3718	36.91689	99.6783
Missing	12	3730	0.32172	100.0000

Category	Frequency table: Education			
	Count	Cumulative Count	Percent	Cumulative Percent
Grade 12	1460	1460	39.14209	39.1421
Tertiary Cert / Trade	983	2443	26.35389	65.4960
Tertiary	870	3313	23.32440	88.8204
Post Graduate	244	3557	6.54155	95.3619
< Matric	13	3570	0.34853	95.7105
Missing	160	3730	4.28954	100.0000

Category	Frequency table: Race			
	Count	Cumulative Count	Percent	Cumulative Percent
Coloured	739	739	19.81233	19.8123
African	1864	2603	49.97319	69.7855
Indian	290	2893	7.77480	77.5603
Asian	132	3025	3.53887	81.0992
European	342	3367	9.16890	90.2681
Missing	363	3730	9.73190	100.0000

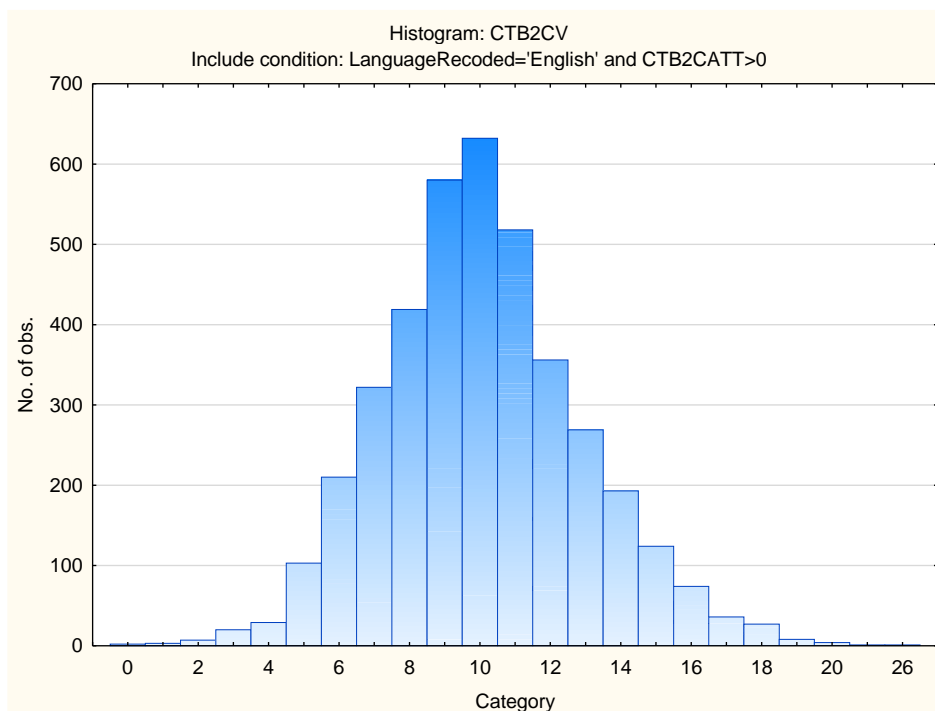
Category	Frequency table: Language			
	Count	Cumulative Count	Percent	Cumulative Percent
English	3730	3730	100.0000	100.0000
Missing	0	3730	0.0000	100.0000

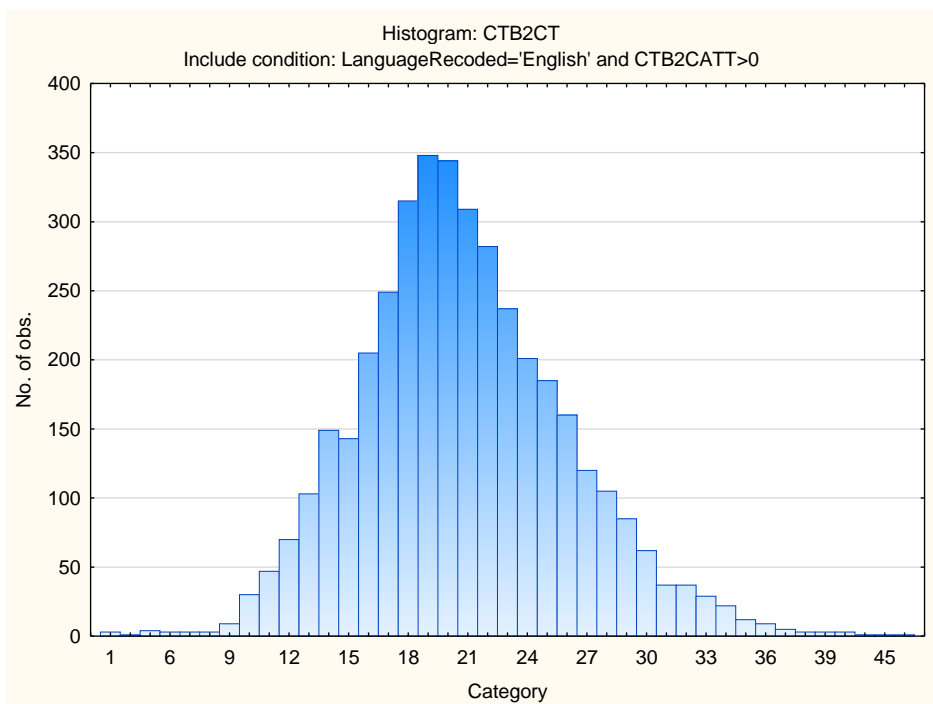
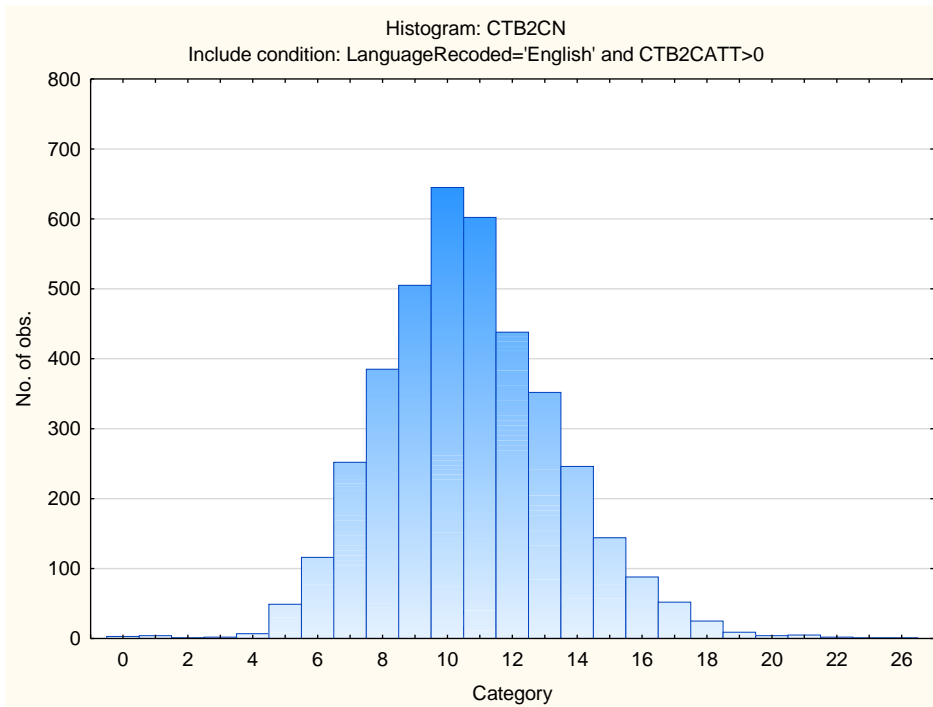
Variable	Descriptive Statistics: Age					
	Mean	Std.Dev	Minimum	Maximum	N	No.cases Missing
Age	31.07267	7.799255	18.00000	68.00000	3055	675

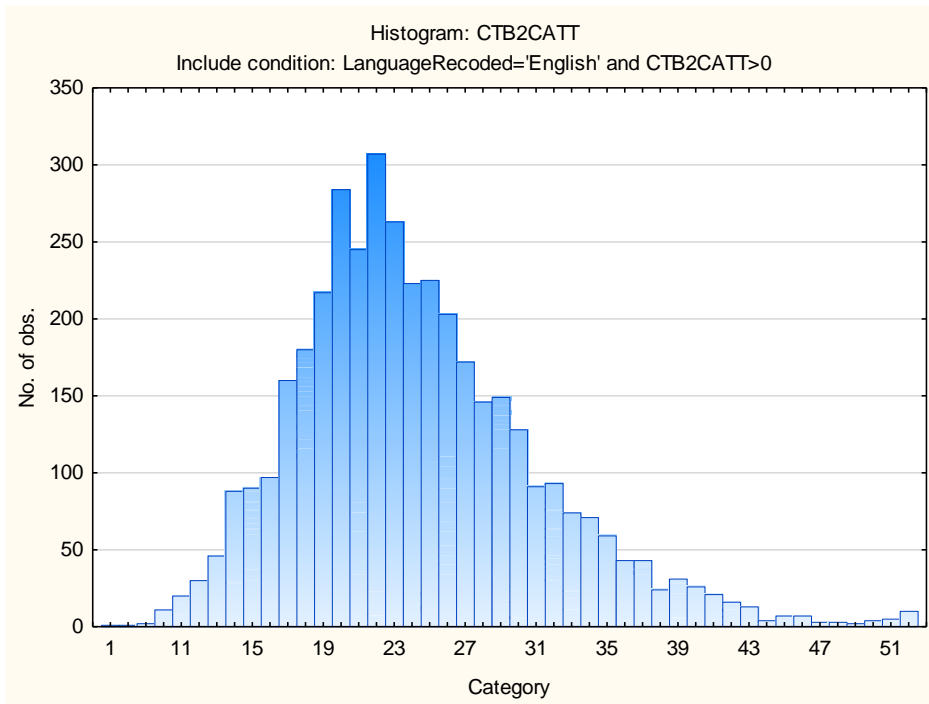


Descriptive Statistics on Clerical Test Battery Subtests

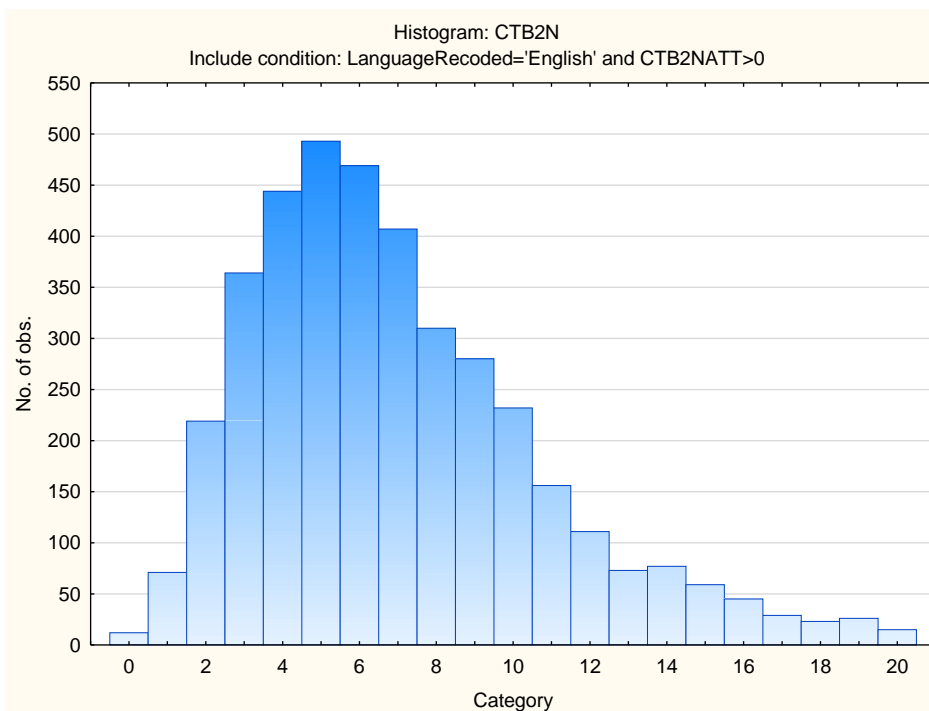
Variable	Descriptive Statistics: Clerical Checking Test					
	Mean	Std.Dev	Minimum	Maximum	N	No.cases Missing
CTB2CV	10.08228	2.855834	0.000000	26.00000	3938	0
CTB2CN	10.68334	2.735951	0.000000	26.00000	3938	0
CTB2CT	20.76562	5.260322	1.000000	52.00000	3938	0
CTB2CATT	24.27171	6.861659	1.000000	52.00000	3938	0

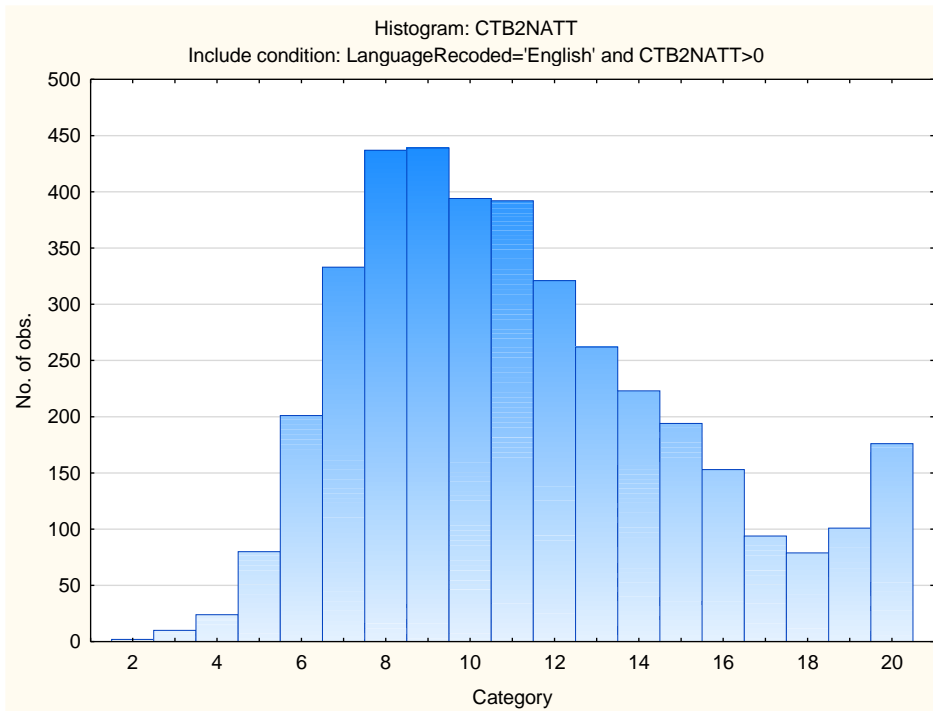




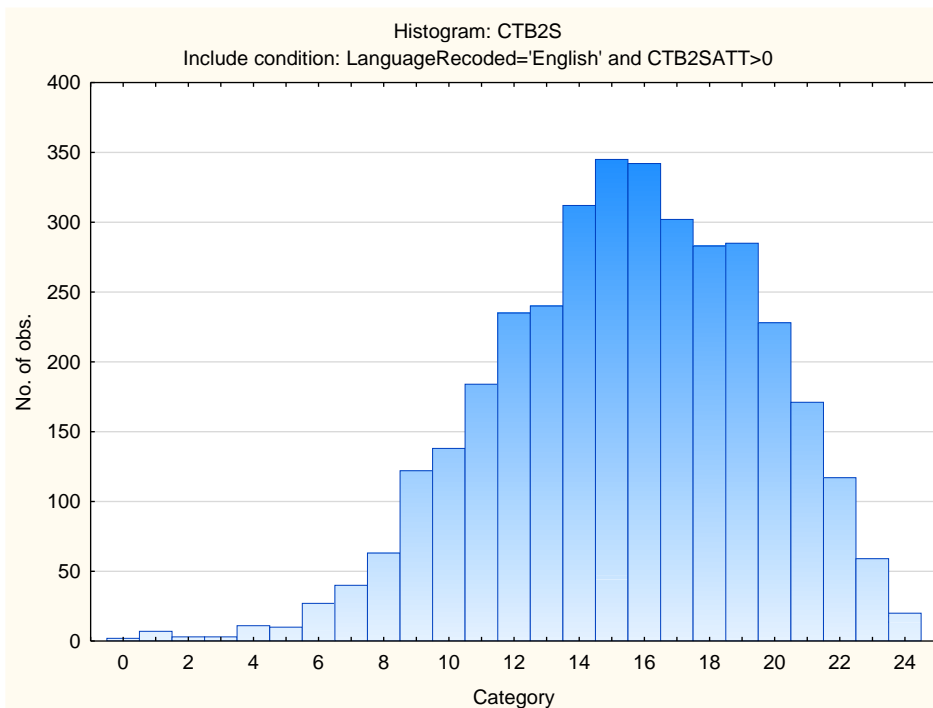


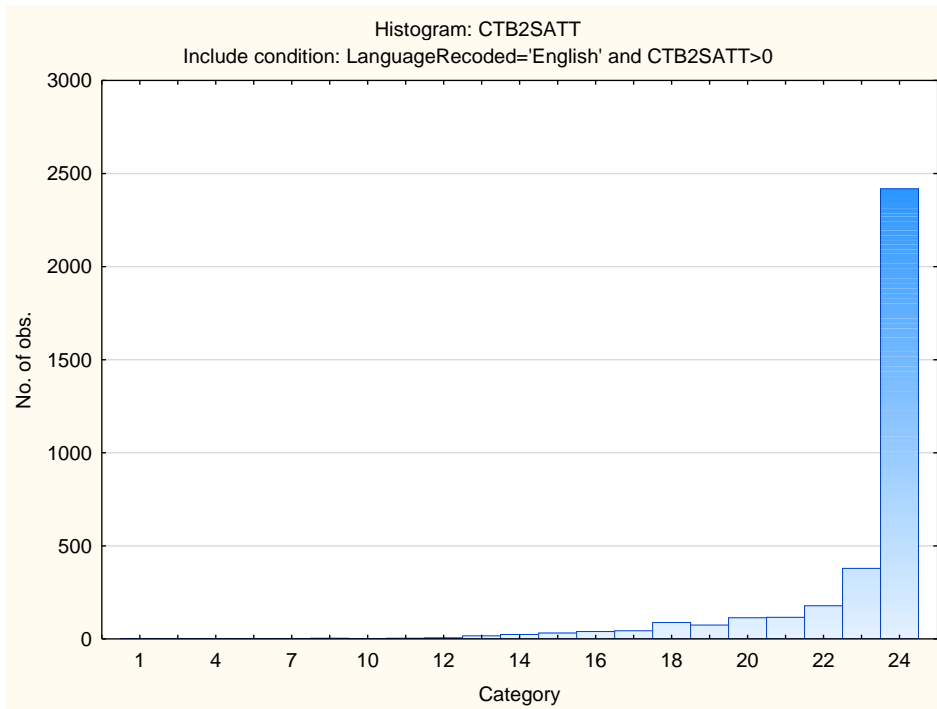
Variable	Descriptive Statistics: Numerical Reasoning Subtest					
	Mean	Std.Dev	Minimum	Maximum	N	No.cases Missing
CTB2N	6.94917	3.763678	0.000000	20.00000	3915	0
CTB2NATT	11.22937	3.894627	2.000000	20.00000	3915	0



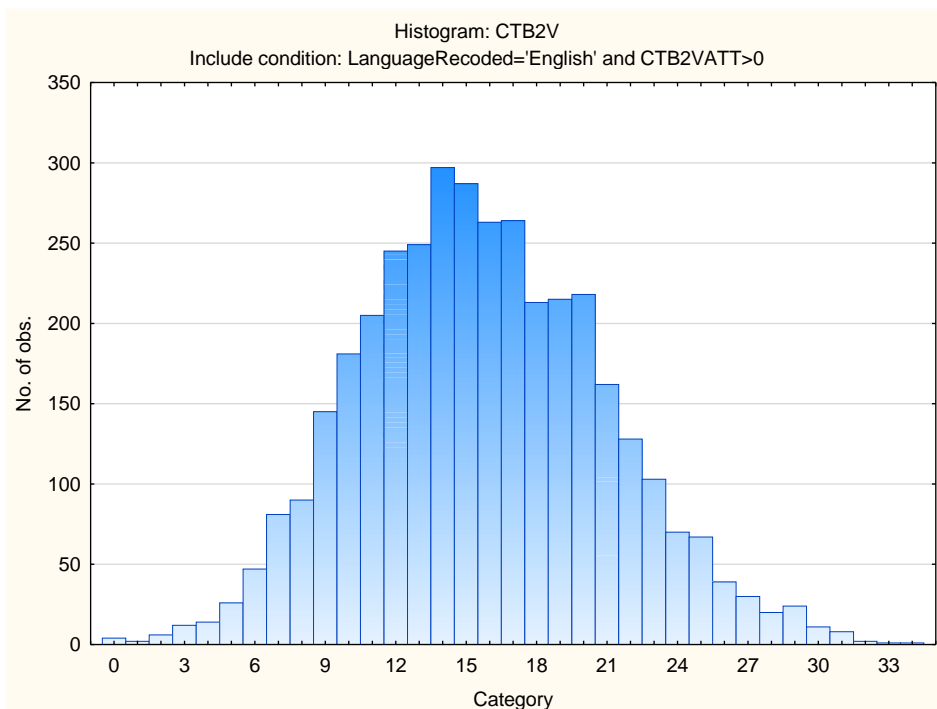


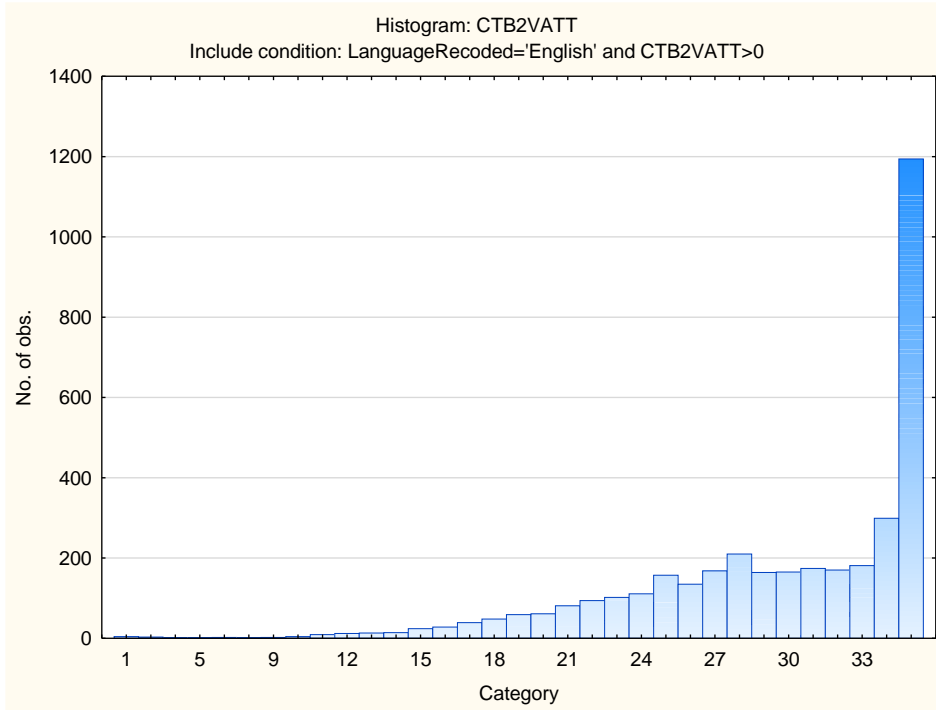
Variable	Descriptive Statistics: Spelling Subtest					
	Mean	Std.Dev	Minimum	Maximum	N	No.cases Missing
CTB2S	15.41955	4.047223	0.000000	24.00000	3549	0
CTB2SATT	22.83291	2.477060	1.000000	24.00000	3549	0





Variable	Descriptive Statistics: Verbal Reasoning Subtest					
	Mean	Std.Dev	Minimum	Maximum	N	No.cases Missing
CTB2V	15.68928	5.244897	0.000000	34.00000	3730	0
CTB2VATT	29.61903	5.905387	1.000000	35.00000	3730	0





Stanine Table

Scales	Stanine Groups								
	S9_1	S9_2	S9_3	S9_4	S9_5	S9_6	S9_7	S9_8	S9_9
Verbal Reasoning	0-6	7-9	10-11	12-14	15-17	18-19	20-22	23-24	25-34
Numerical Ability	0-0	1-2	3-4	5-6	7-7	8-9	10-11	12-13	14-20
Clerical Checking - Verbal	0-5	6-6	7-7	8-9	10-10	11-12	13-13	14-15	16-26
Clerical Checking - Numerical	0-5	6-7	8-8	9-9	10-11	12-12	13-14	15-15	16-26
Clerical Checking - Total	1-11	12-14	15-16	17-19	20-22	23-24	25-27	28-29	30-52
Spelling	0-8	9-10	11-12	13-14	15-16	17-18	19-20	21-22	23-24