

Clerical Test Battery 2 (CTB2)

Norm Group: SA Afrikaans Language Speakers, Updated 2022

Sample Composition

The sample consisted of respondents who had completed any of the subtests of the Clerical Test Battery (CTB2) battery in the period March 2013 to March 2022. Since not all the respondents completed all the subtests, biographical information is reported separately.

Sample Composition: Clerical Checking Subtest (CTB2C)

Category	Frequency table: Sex			
	Count	Cumulative Count	Percent	Cumulative Percent
F	496	496	65.17740	65.1774
M	264	760	34.69120	99.8686
Missing	1	761	0.13141	100.0000

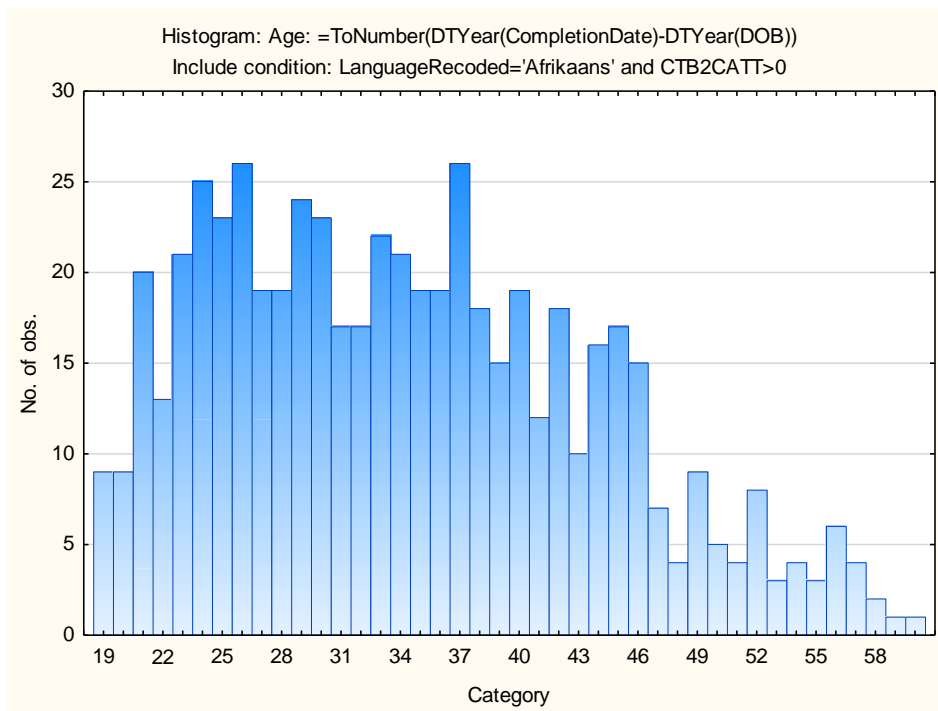
Category	Frequency table: Education			
	Count	Cumulative Count	Percent	Cumulative Percent
Grade 12	373	373	49.01445	49.0145
Tertiary Cert / Trade	208	581	27.33246	76.3469
Tertiary	93	674	12.22076	88.5677
Post Graduate	41	715	5.38765	93.9553
< Matric	10	725	1.31406	95.2694
Missing	36	761	4.73062	100.0000

Category	Frequency table: Race			
	Count	Cumulative Count	Percent	Cumulative Percent
Coloured	228	228	29.96058	29.9606
African	102	330	13.40342	43.3640
European	389	719	51.11695	94.4809
Missing	42	761	5.51905	100.0000

Category	Frequency table: Language			
	Count	Cumulative Count	Percent	Cumulative Percent
Afrikaans	761	761	100.0000	100.0000
Missing	0	761	0.0000	100.0000

Category	Frequency table: Language Group			
	Count	Cumulative Count	Percent	Cumulative Percent
Afrikaans	761	761	100.0000	100.0000
Missing	0	761	0.0000	100.0000

Variable	Descriptive Statistics: Age					
	Mean	Std.Dev	Minimum	Maximum	N	No.cases Missing
Age	34.34729	9.433971	19.00000	60.00000	573	188



Sample Composition: Numerical Subtest (CTB2N)

Category	Frequency table: Sex			
	Count	Cumulative Count	Percent	Cumulative Percent
F	485	485	65.27591	65.2759
M	257	742	34.58950	99.8654
Missing	1	743	0.13459	100.0000

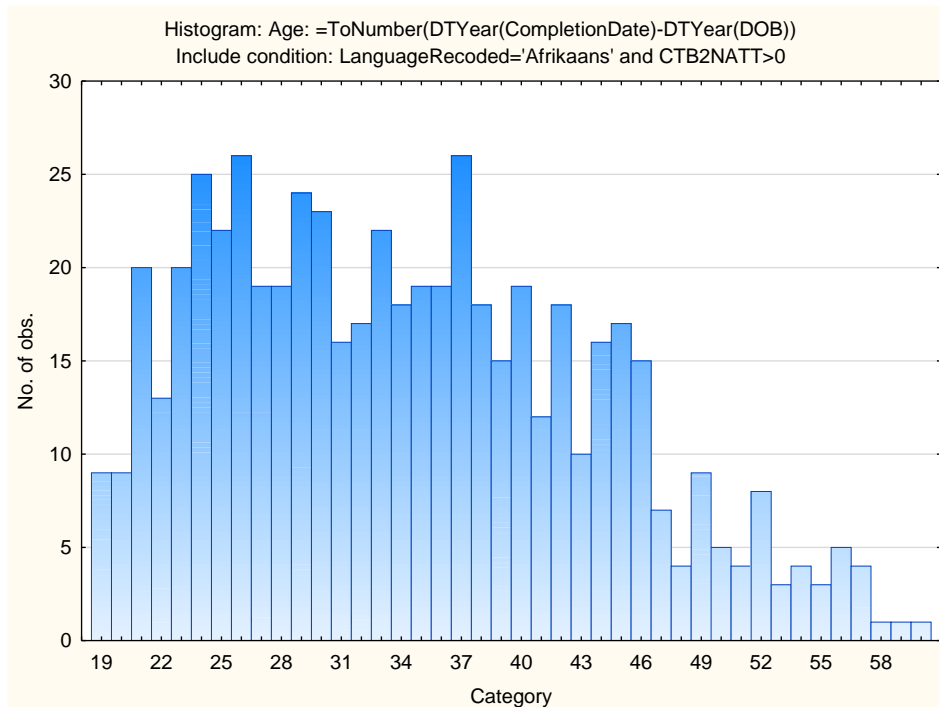
Category	Frequency table: Education			
	Count	Cumulative Count	Percent	Cumulative Percent
Grade 12	367	367	49.39435	49.3943
Tertiary Cert / Trade	202	569	27.18708	76.5814
Tertiary	89	658	11.97847	88.5599
Post Graduate	39	697	5.24899	93.8089
< Matric	10	707	1.34590	95.1548
Missing	36	743	4.84522	100.0000

Category	Frequency table: Race			
	Count	Cumulative Count	Percent	Cumulative Percent
Coloured	221	221	29.74428	29.7443
African	102	323	13.72813	43.4724
European	378	701	50.87483	94.3472
Missing	42	743	5.65276	100.0000

Category	Frequency table: Language			
	Count	Cumulative Count	Percent	Cumulative Percent
Afrikaans	743	743	100.0000	100.0000
Missing	0	743	0.0000	100.0000

Category	Frequency table: Language Group			
	Count	Cumulative Count	Percent	Cumulative Percent
Afrikaans	743	743	100.0000	100.0000
Missing	0	743	0.0000	100.0000

Variable	Descriptive Statistics: Age					
	Mean	Std.Dev	Minimum	Maximum	N	No.cases Missing
Age	34.31150	9.382643	19.00000	60.00000	565	178



Sample Composition: Clerical Spelling Subtest (CTB2S)

Category	Frequency table: Sex			
	Count	Cumulative Count	Percent	Cumulative Percent
F	401	401	68.43003	68.4300
M	184	585	31.39932	99.8294
Missing	1	586	0.17065	100.0000

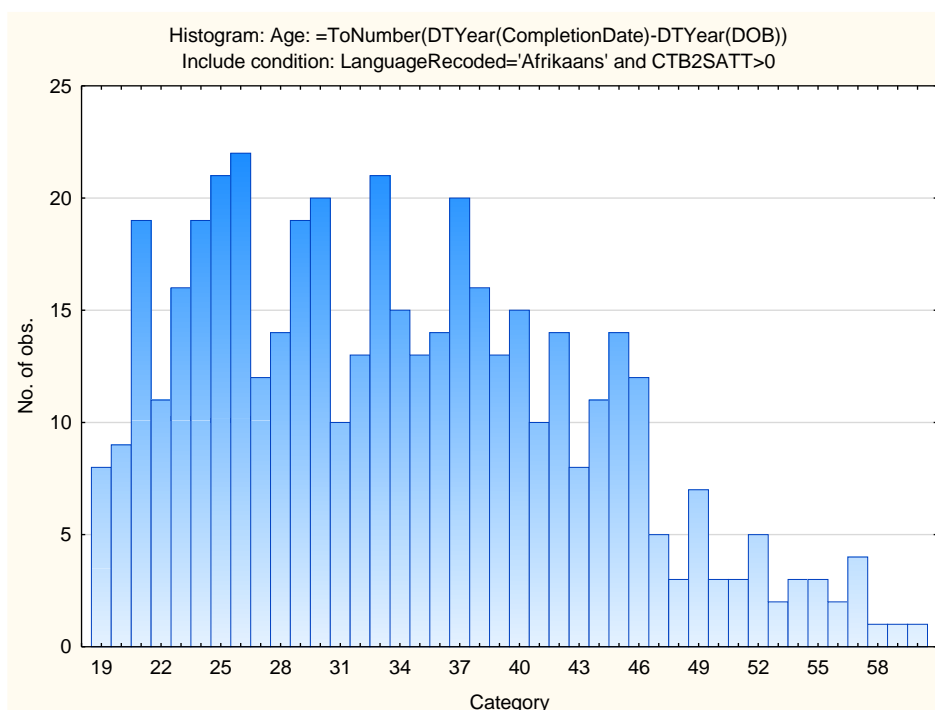
Category	Frequency table: Education			
	Count	Cumulative Count	Percent	Cumulative Percent
Grade 12	297	297	50.68259	50.6826
Tertiary Cert / Trade	138	435	23.54949	74.2321
Tertiary	78	513	13.31058	87.5427
Post Graduate	37	550	6.31399	93.8567
< Matric	6	556	1.02389	94.8805
Missing	30	586	5.11945	100.0000

Category	Frequency table: Race			
	Count	Cumulative Count	Percent	Cumulative Percent
Coloured	153	153	26.10922	26.1092
African	82	235	13.99317	40.1024
European	310	545	52.90102	93.0034
Missing	41	586	6.99659	100.0000

Category	Frequency table: Language			
	Count	Cumulative Count	Percent	Cumulative Percent
Afrikaans	586	586	100.0000	100.0000
Missing	0	586	0.0000	100.0000

Category	Frequency table: Language Group			
	Count	Cumulative Count	Percent	Cumulative Percent
Afrikaans	586	586	100.0000	100.0000
Missing	0	586	0.0000	100.0000

Variable	Descriptive Statistics: Age					
	Mean	Std.Dev	Minimum	Maximum	N	No.cases Missing
Age	33.95354	9.387923	19.00000	60.00000	452	134



Sample Composition: Clerical Verbal Subtest (CTB2V)

Category	Frequency table: Sex			
	Count	Cumulative Count	Percent	Cumulative Percent
F	417	417	64.55108	64.5511
M	228	645	35.29412	99.8452
Missing	1	646	0.15480	100.0000

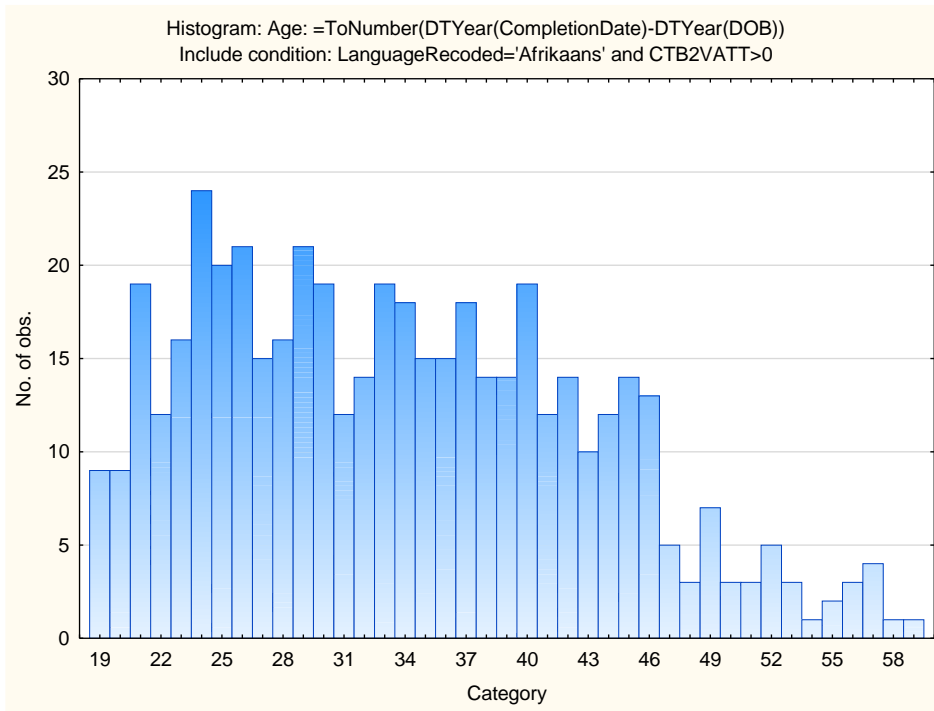
Category	Frequency table: Education			
	Count	Cumulative Count	Percent	Cumulative Percent
Grade 12	315	315	48.76161	48.7616
Tertiary Cert / Trade	171	486	26.47059	75.2322
Tertiary	82	568	12.69350	87.9257
Post Graduate	34	602	5.26316	93.1889
< Matric	8	610	1.23839	94.4272
Missing	36	646	5.57276	100.0000

Category	Frequency table: Race			
	Count	Cumulative Count	Percent	Cumulative Percent
Coloured	165	165	25.54180	25.5418
African	98	263	15.17028	40.7121
European	343	606	53.09598	93.8080
Missing	40	646	6.19195	100.0000

Category	Frequency table: Language			
	Count	Cumulative Count	Percent	Cumulative Percent
Afrikaans	646	646	100.0000	100.0000
Missing	0	646	0.0000	100.0000

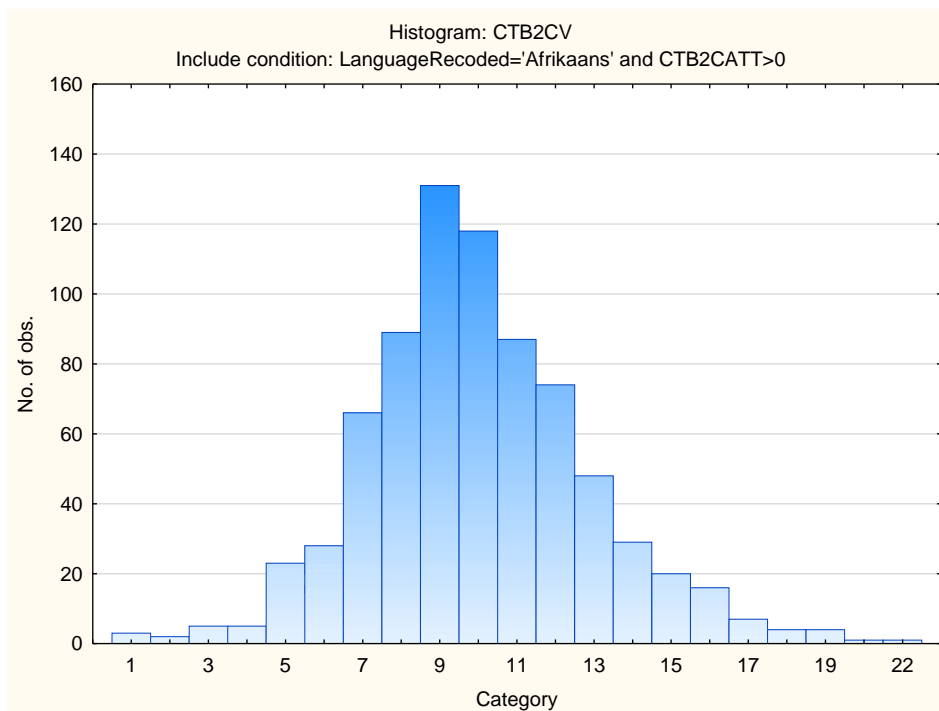
Category	Frequency table: Language Group			
	Count	Cumulative Count	Percent	Cumulative Percent
Afrikaans	646	646	100.0000	100.0000
Missing	0	646	0.0000	100.0000

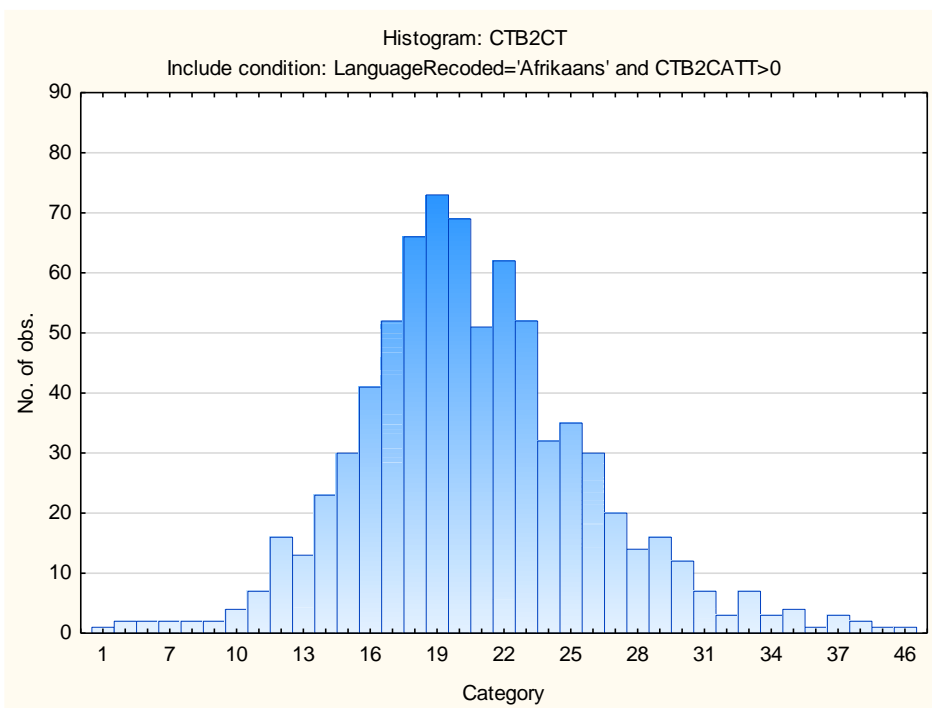
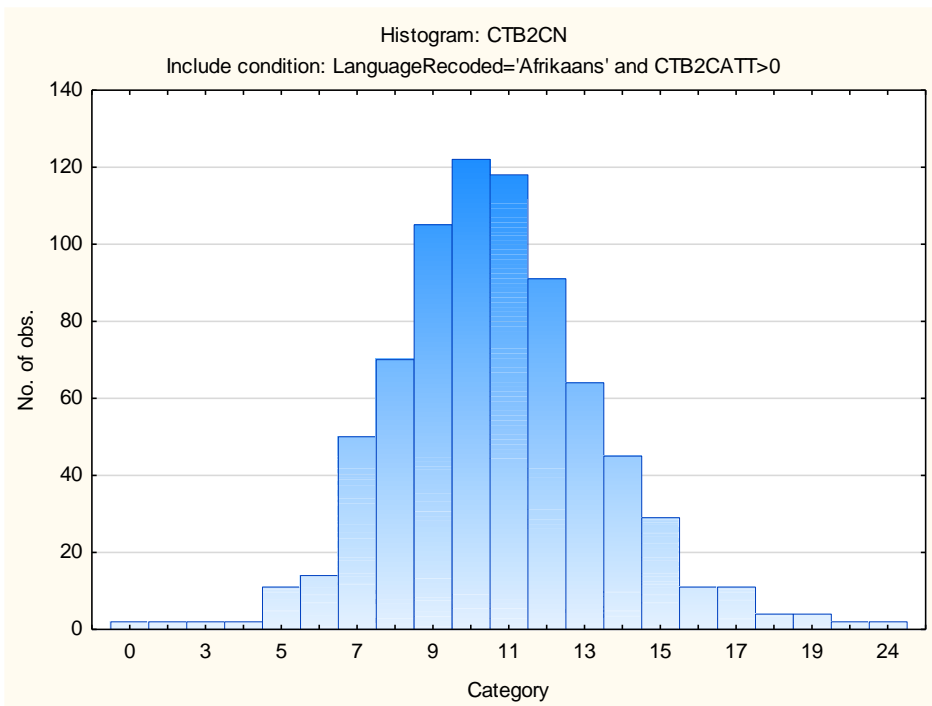
Variable	Descriptive Statistics: Age					
	Mean	Std.Dev	Minimum	Maximum	N	No.cases Missing
Age	33.79368	9.224552	19.00000	60.00000	475	171

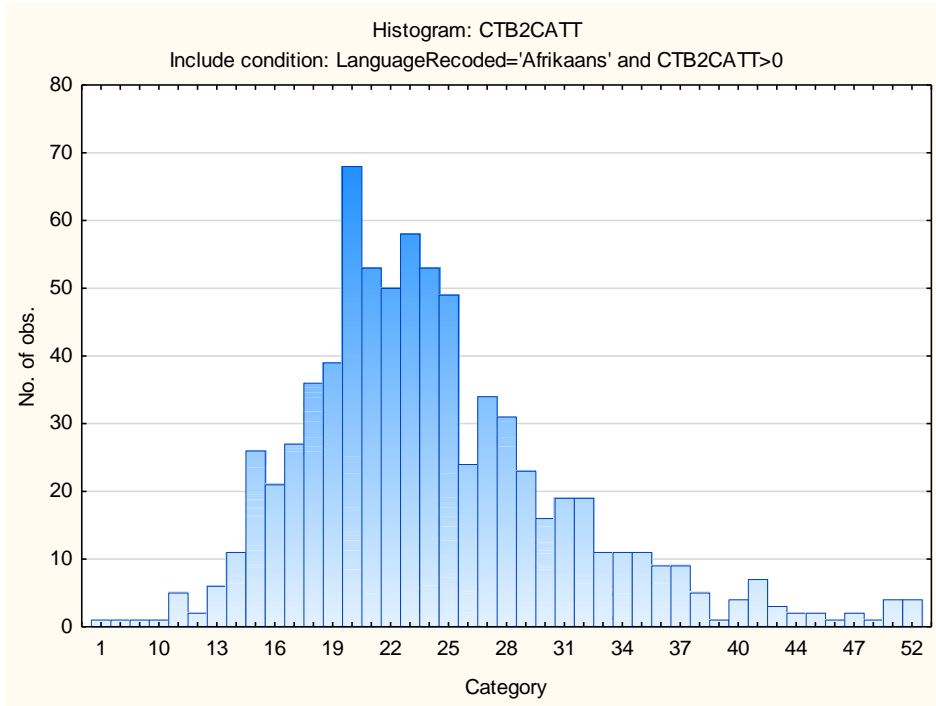


Descriptive Statistics on Clerical Test Battery Subtests

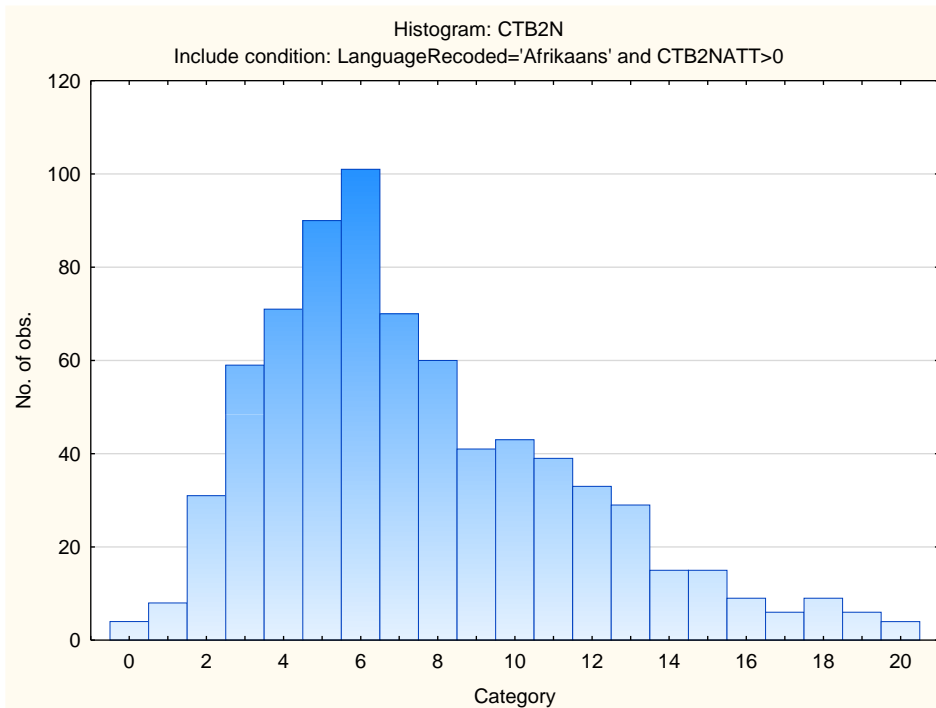
Variable	Descriptive Statistics: Clerical Checking Subtest					
	Mean	Std.Dev	Minimum	Maximum	N	No.cases Missing
CTB2CV	9.98423	2.906846	1.000000	22.00000	761	0
CTB2CN	10.67017	2.842861	0.000000	24.00000	761	0
CTB2CT	20.65440	5.411502	1.000000	46.00000	761	0
CTB2CATT	24.22076	7.122510	1.000000	52.00000	761	0

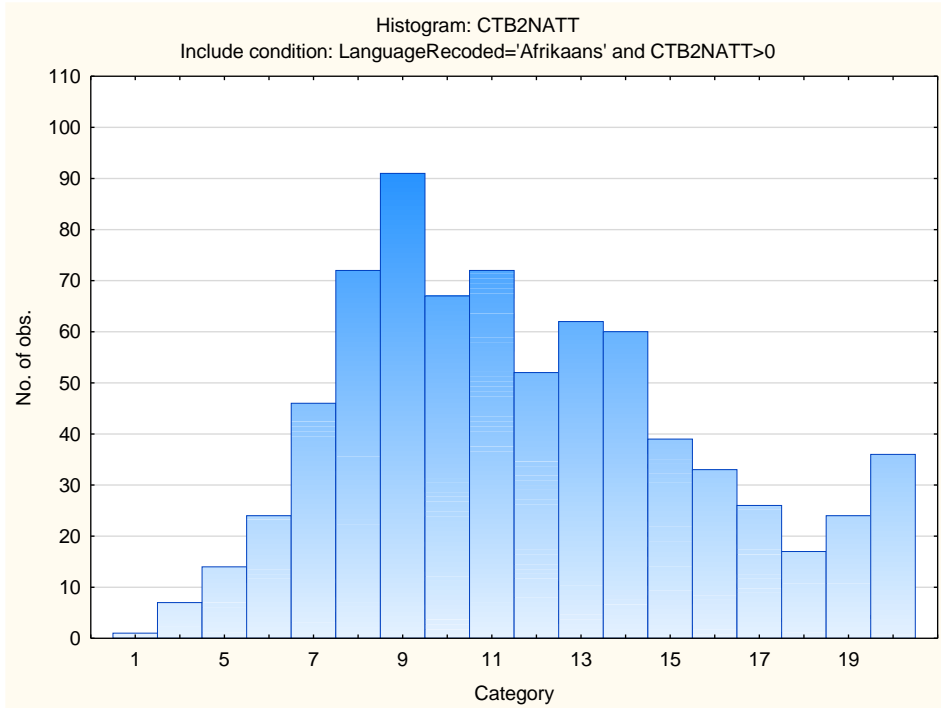




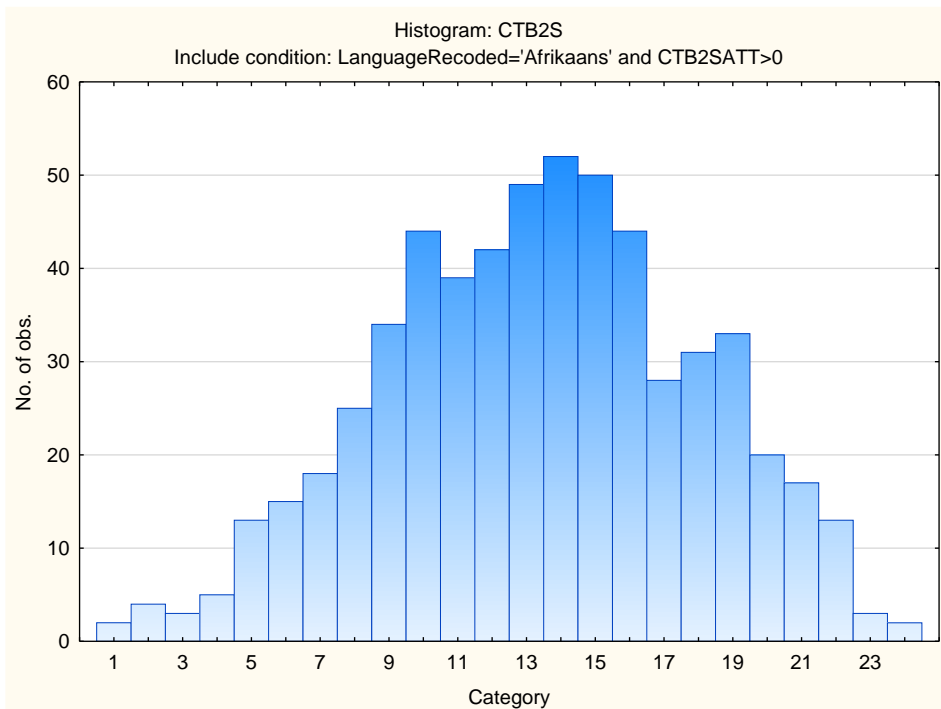


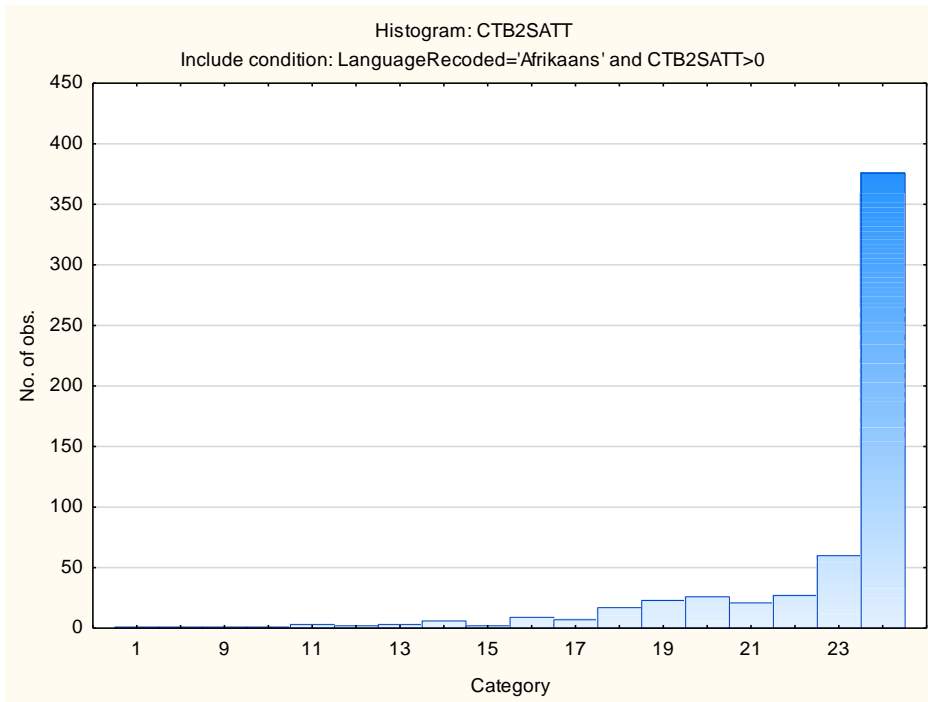
Variable	Descriptive Statistics: Numerical Reasoning Subtest					
	Mean	Std.Dev	Minimum	Maximum	N	No.cases Missing
CTB2N	7.53028	3.996472	0.000000	20.00000	743	0
CTB2NATT	11.74832	3.929283	1.000000	20.00000	743	0



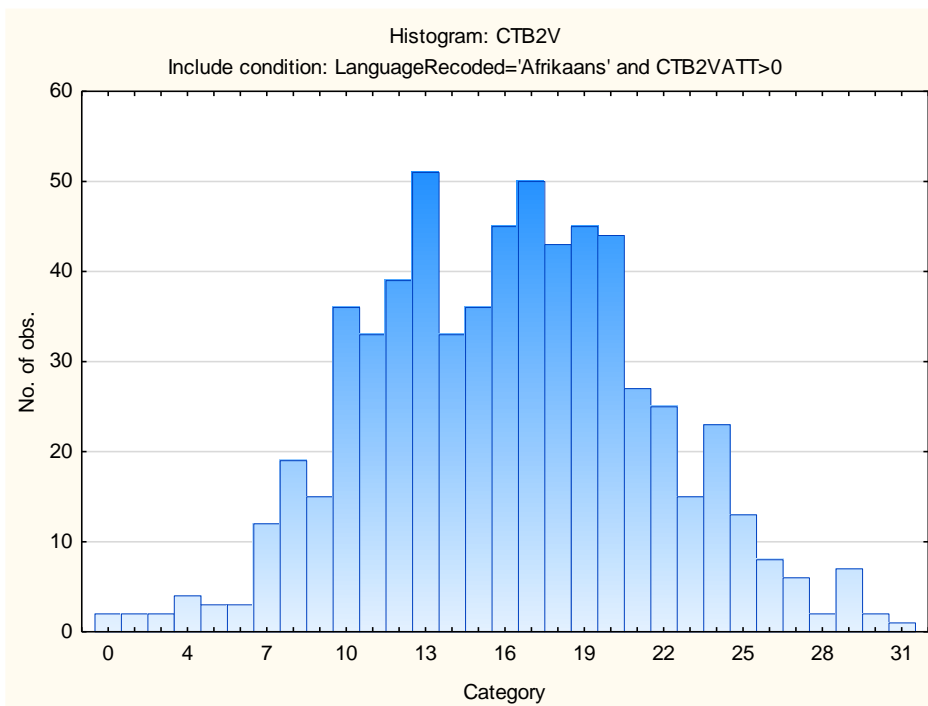


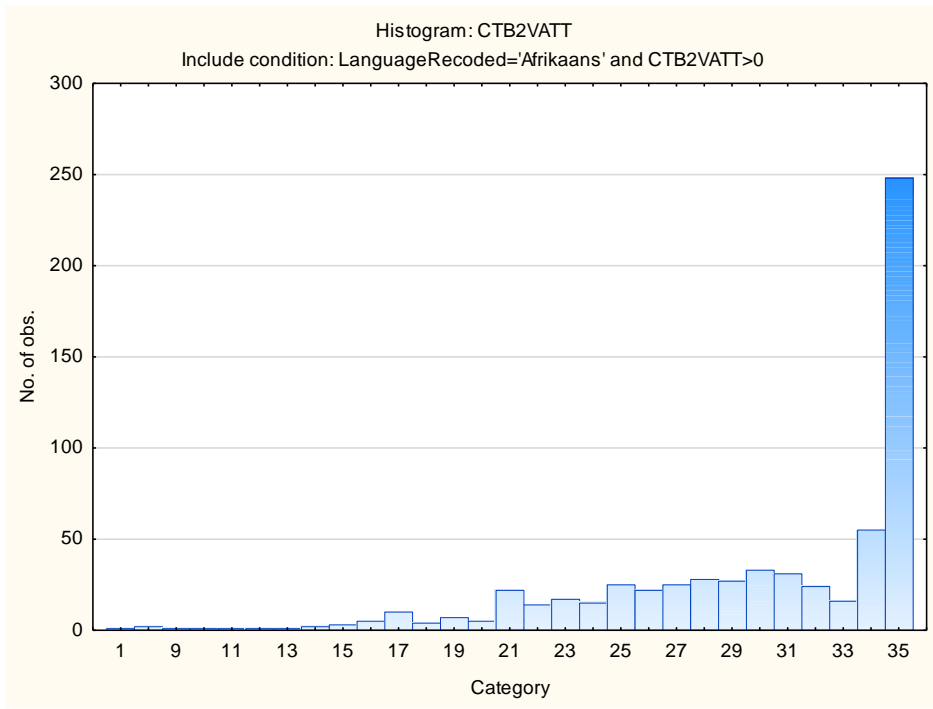
Variable	Descriptive Statistics: Spelling Subtest					
	Mean	Std.Dev	Minimum	Maximum	N	No.cases Missing
CTB2S	13.37713	4.546747	1.000000	24.00000	586	0
CTB2SATT	22.53072	2.846484	1.000000	24.00000	586	0





Variable	Descriptive Statistics: Verbal Reasoning Subtest					
	Mean	Std.Dev	Minimum	Maximum	N	No.cases Missing
CTB2V	16.13622	5.361941	0.000000	31.000000	646	0
CTB2VATT	30.11920	5.858516	1.000000	35.000000	646	0





Stanine Table

Scales	Stanine Groups								
	S9_1	S9_2	S9_3	S9_4	S9_5	S9_6	S9_7	S9_8	S9_9
Verbal Reasoning	0-6	7-9	10-12	13-14	15-17	18-20	21-22	23-25	26-31
Numerical Ability	0-0	1-2	3-4	5-6	7-8	9-10	11-12	13-14	15-20
Clerical Checking - Verbal	1-4	5-6	7-7	8-9	10-10	11-12	13-13	14-15	16-22
Clerical Checking - Numerical	0-5	6-7	8-8	9-9	10-11	12-12	13-14	15-15	16-24
Clerical Checking - Total	1-11	12-13	14-16	17-19	20-22	23-24	25-27	28-30	31-46
Spelling	1-5	6-7	8-9	10-12	13-14	15-16	17-19	20-21	22-24