

Clerical Test Battery 2 (CTB2)

Norm Group: SA Indigenous Language Speakers, Updated 2022

Sample Composition

The sample consisted of respondents who had completed any of the subtests of the Clerical Test Battery (CTB2) battery in the period March 2013 to March 2022. Since not all the respondents completed all the subtests, biographical information is reported separately.

Sample Composition: Clerical Checking Subtest (CTB2C)

Category	Frequency table: Sex			
	Count	Cumulative Count	Percent	Cumulative Percent
F	2449	2449	61.87468	61.8747
M	1505	3954	38.02425	99.8989
Missing	4	3958	0.10106	100.0000

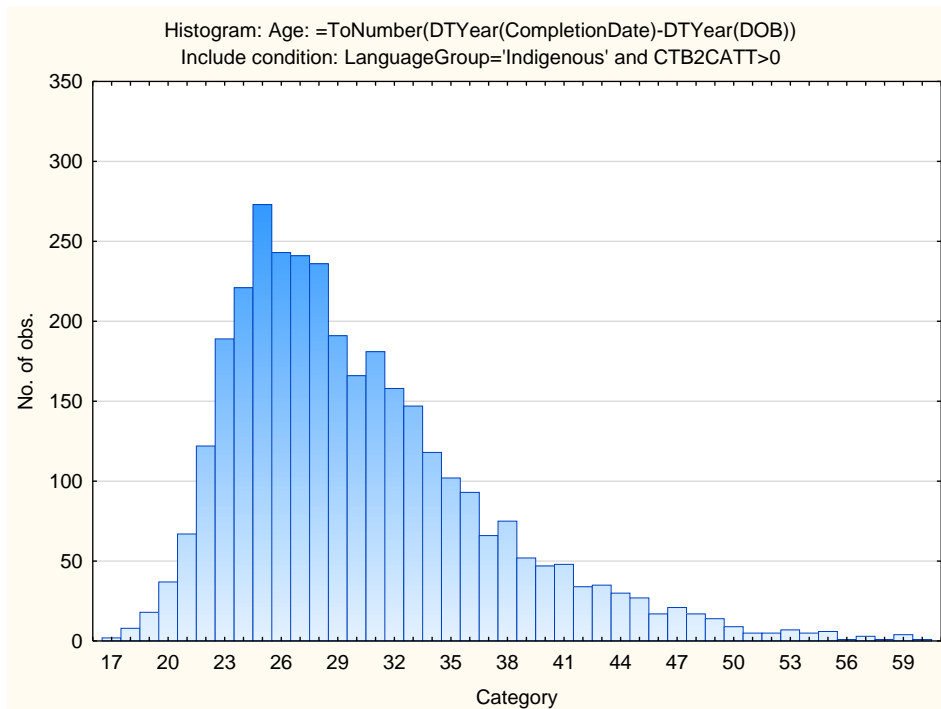
Category	Frequency table: Education			
	Count	Cumulative Count	Percent	Cumulative Percent
Grade 12	1411	1411	35.64932	35.6493
Tertiary Cert / Trade	1274	2685	32.18797	67.8373
Tertiary	893	3578	22.56190	90.3992
Post Graduate	240	3818	6.06367	96.4629
< Matric	23	3841	0.58110	97.0440
Missing	117	3958	2.95604	100.0000

Category	Frequency table: Race			
	Count	Cumulative Count	Percent	Cumulative Percent
Coloured	21	21	0.53057	0.5306
African	3821	3842	96.53866	97.0692
Asian	2	3844	0.05053	97.1198
European	2	3846	0.05053	97.1703
Missing	112	3958	2.82971	100.0000

Category	Frequency table: Language			
	Count	Cumulative Count	Percent	Cumulative Percent
Setswana	528	528	13.34007	13.3401
isiXhosa	1046	1574	26.42749	39.7676
Xitsonga	176	1750	4.44669	44.2142
Tshivenda	165	1915	4.16877	48.3830
isiZulu	1045	2960	26.40222	74.7852
Sepedi	483	3443	12.20313	86.9884
isiNdebele	75	3518	1.89490	88.8833
siSwati	54	3572	1.36433	90.2476
Sesotho	386	3958	9.75240	100.0000
Missing	0	3958	0.00000	100.0000

Category	Frequency table: Language Group			
	Count	Cumulative Count	Percent	Cumulative Percent
Indigenous	3958	3958	100.0000	100.0000
Missing	0	3958	0.0000	100.0000

Variable	Descriptive Statistics: Age					
	Mean	Std.Dev	Minimum	Maximum	N	No.cases Missing
Age	30.10859	6.806191	17.00000	62.00000	3343	615



Sample Composition: Numerical Subtest (CTB2N)

Category	Frequency table: Sex			
	Count	Cumulative Count	Percent	Cumulative Percent
F	2436	2436	61.84311	61.8431
M	1499	3935	38.05534	99.8985
Missing	4	3939	0.10155	100.0000

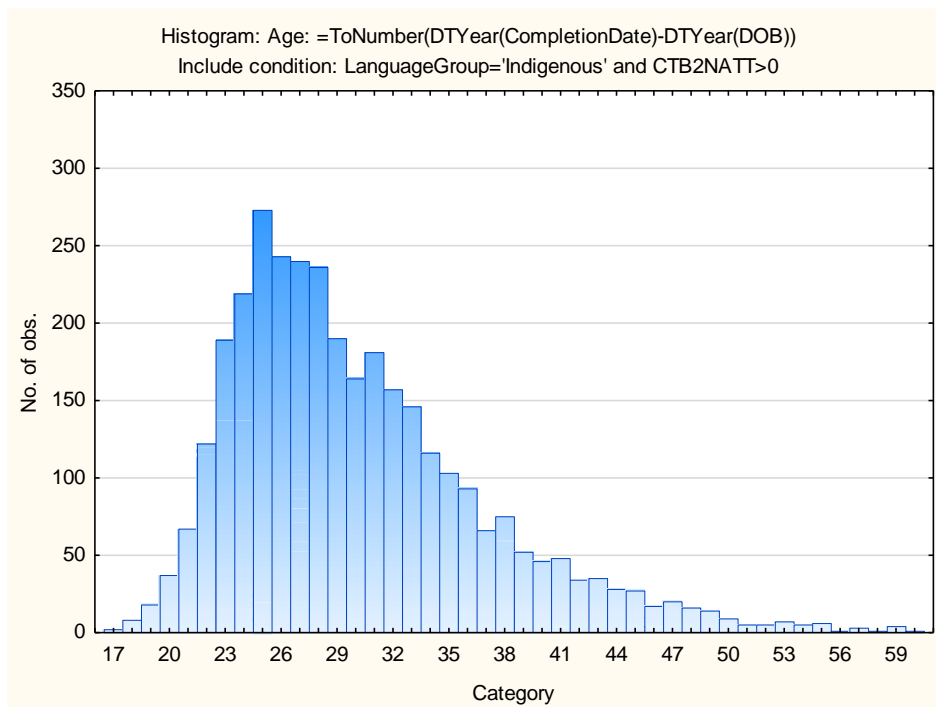
Category	Frequency table: Education			
	Count	Cumulative Count	Percent	Cumulative Percent
Grade 12	1402	1402	35.59279	35.5928
Tertiary Cert / Trade	1269	2671	32.21630	67.8091
Tertiary	892	3563	22.64534	90.4544
Post Graduate	237	3800	6.01676	96.4712
< Matric	23	3823	0.58390	97.0551
Missing	116	3939	2.94491	100.0000

Category	Frequency table: Race			
	Count	Cumulative Count	Percent	Cumulative Percent
Coloured	21	21	0.53313	0.5331
African	3802	3823	96.52196	97.0551
Asian	2	3825	0.05077	97.1059
European	2	3827	0.05077	97.1566
Missing	112	3939	2.84336	100.0000

Category	Frequency table: Language			
	Count	Cumulative Count	Percent	Cumulative Percent
Setswana	524	524	13.30287	13.3029
isiXhosa	1043	1567	26.47880	39.7817
Xitsonga	175	1742	4.44275	44.2244
Tshivenda	164	1906	4.16349	48.3879
isiZulu	1040	2946	26.40264	74.7906
Sepedi	479	3425	12.16045	86.9510
isiNdebele	75	3500	1.90404	88.8550
siSwati	54	3554	1.37091	90.2259
Sesotho	385	3939	9.77405	100.0000
Missing	0	3939	0.00000	100.0000

Category	Frequency table: Language Group			
	Count	Cumulative Count	Percent	Cumulative Percent
Indigenous	3939	3939	100.0000	100.0000
Missing	0	3939	0.0000	100.0000

Variable	Descriptive Statistics: Age					
	Mean	Std.Dev	Minimum	Maximum	N	No. cases Missing
Age	30.08952	6.794134	17.00000	62.00000	3329	610



Sample composition: Clerical Spelling Subtest (CTB2S)

Category	Frequency table: Sex			
	Count	Cumulative Count	Percent	Cumulative Percent
F	2213	2213	61.50639	61.5064
M	1381	3594	38.38243	99.8888
Missing	4	3598	0.11117	100.0000

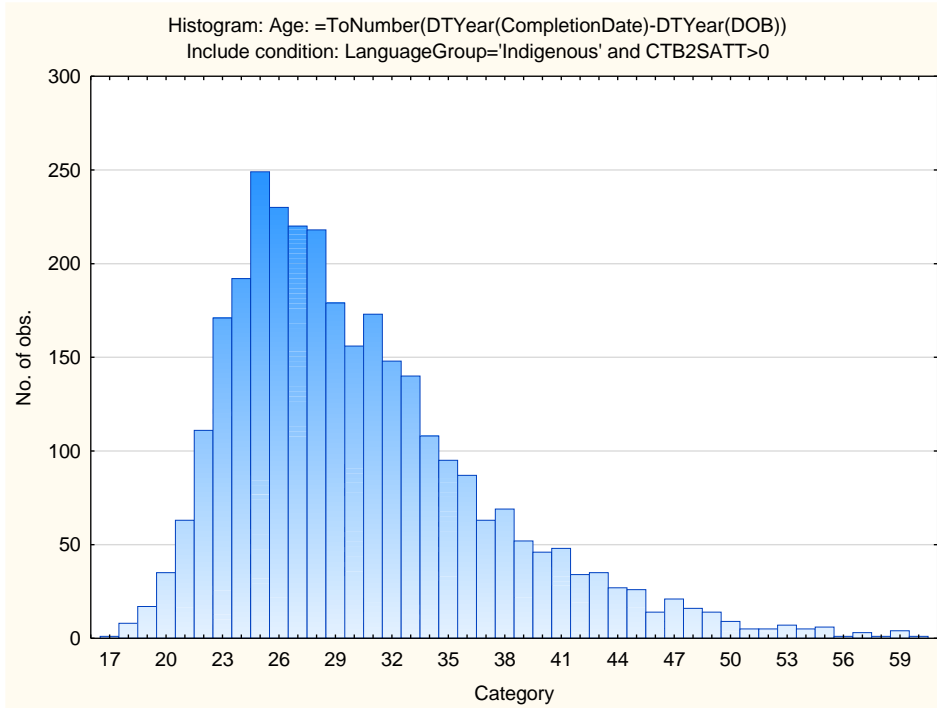
Category	Frequency table: Education			
	Count	Cumulative Count	Percent	Cumulative Percent
Grade 12	1324	1324	36.79822	36.7982
Tertiary Cert / Trade	1142	2466	31.73986	68.5381
Tertiary	820	3286	22.79044	91.3285
Post Graduate	220	3506	6.11451	97.4430
< Matric	15	3521	0.41690	97.8599
Missing	77	3598	2.14008	100.0000

Category	Frequency table: Race			
	Count	Cumulative Count	Percent	Cumulative Percent
Coloured	21	21	0.58366	0.5837
African	3470	3491	96.44247	97.0261
Asian	2	3493	0.05559	97.0817
European	2	3495	0.05559	97.1373
Missing	103	3598	2.86270	100.0000

Category	Frequency table: Language			
	Count	Cumulative Count	Percent	Cumulative Percent
Setswana	488	488	13.56309	13.5631
isiXhosa	931	1419	25.87549	39.4386
Xitsonga	164	1583	4.55809	43.9967
Tshivenda	156	1739	4.33574	48.3324
isiZulu	958	2697	26.62590	74.9583
Sepedi	453	3150	12.59033	87.5486
isiNdebele	72	3222	2.00111	89.5497
siSwati	48	3270	1.33407	90.8838
Sesotho	328	3598	9.11618	100.0000
Missing	0	3598	0.00000	100.0000

Category	Frequency table: Language Group			
	Count	Cumulative Count	Percent	Cumulative Percent
Indigenous	3598	3598	100.0000	100.0000
Missing	0	3598	0.0000	100.0000

Variable	Descriptive Statistics: Age					
	Mean	Std.Dev	Minimum	Maximum	N	No.cases Missing
Age	30.24157	6.871721	17.00000	62.00000	3113	485



Sample Composition: Clerical Verbal Subtest (CTB2V)

Category	Frequency table: Sex			
	Count	Cumulative Count	Percent	Cumulative Percent
F	2302	2302	61.60021	61.6002
M	1431	3733	38.29275	99.8930
Missing	4	3737	0.10704	100.0000

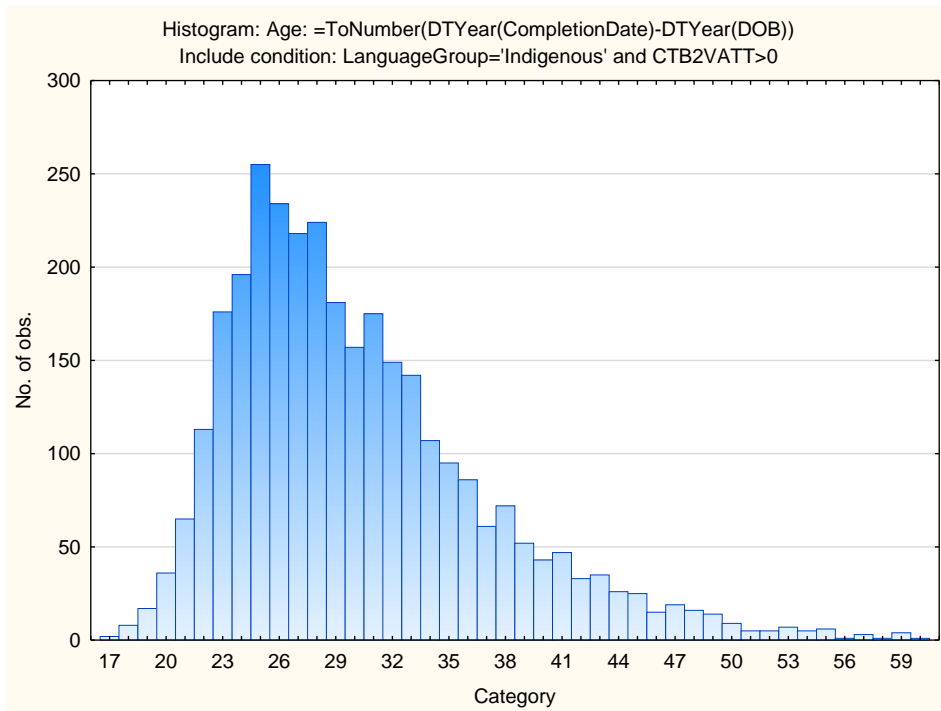
Category	Frequency table: Education			
	Count	Cumulative Count	Percent	Cumulative Percent
Grade 12	1351	1351	36.15199	36.1520
Tertiary Cert / Trade	1193	2544	31.92400	68.0760
Tertiary	835	3379	22.34413	90.4201
Post Graduate	222	3601	5.94059	96.3607
< Matric	20	3621	0.53519	96.8959
Missing	116	3737	3.10409	100.0000

Category	Frequency table: Race			
	Count	Cumulative Count	Percent	Cumulative Percent
Coloured	21	21	0.56195	0.5619
African	3600	3621	96.33396	96.8959
Asian	2	3623	0.05352	96.9494
European	2	3625	0.05352	97.0029
Missing	112	3737	2.99706	100.0000

Category	Frequency table: Language			
	Count	Cumulative Count	Percent	Cumulative Percent
Setswana	499	499	13.35296	13.3530
isiXhosa	962	1461	25.74257	39.0955
Xitsonga	168	1629	4.49558	43.5911
Tshivenda	153	1782	4.09419	47.6853
isiZulu	1012	2794	27.08055	74.7659
Sepedi	458	3252	12.25582	87.0217
isiNdebele	73	3325	1.95344	88.9751
siSwati	52	3377	1.39149	90.3666
Sesotho	360	3737	9.63340	100.0000
Missing	0	3737	0.00000	100.0000

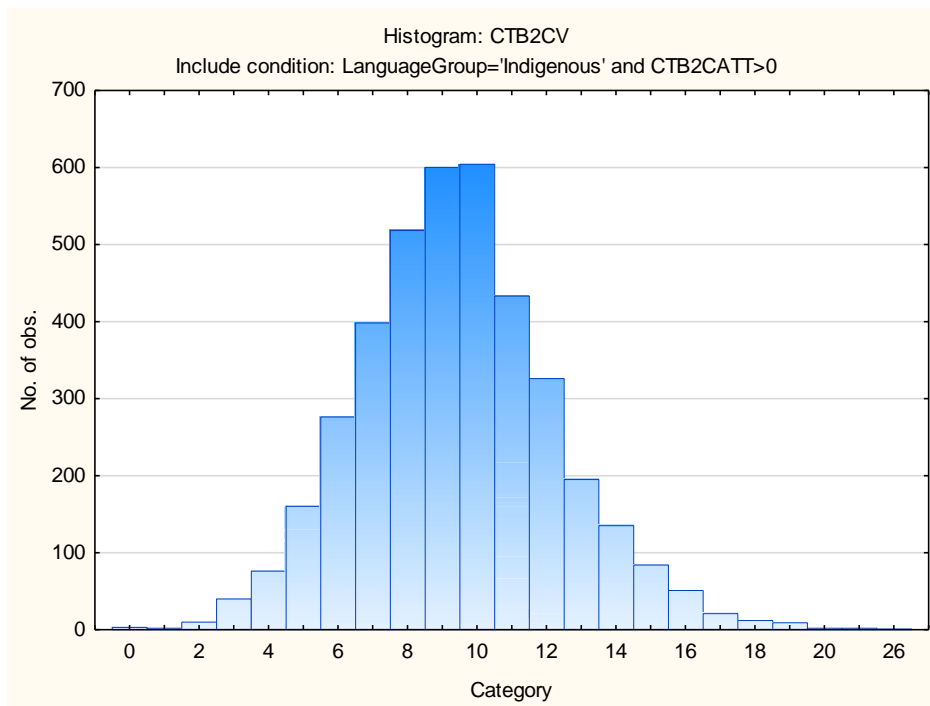
Category	Frequency table: Language Group			
	Count	Cumulative Count	Percent	Cumulative Percent
Indigenous	3737	3737	100.0000	100.0000
Missing	0	3737	0.0000	100.0000

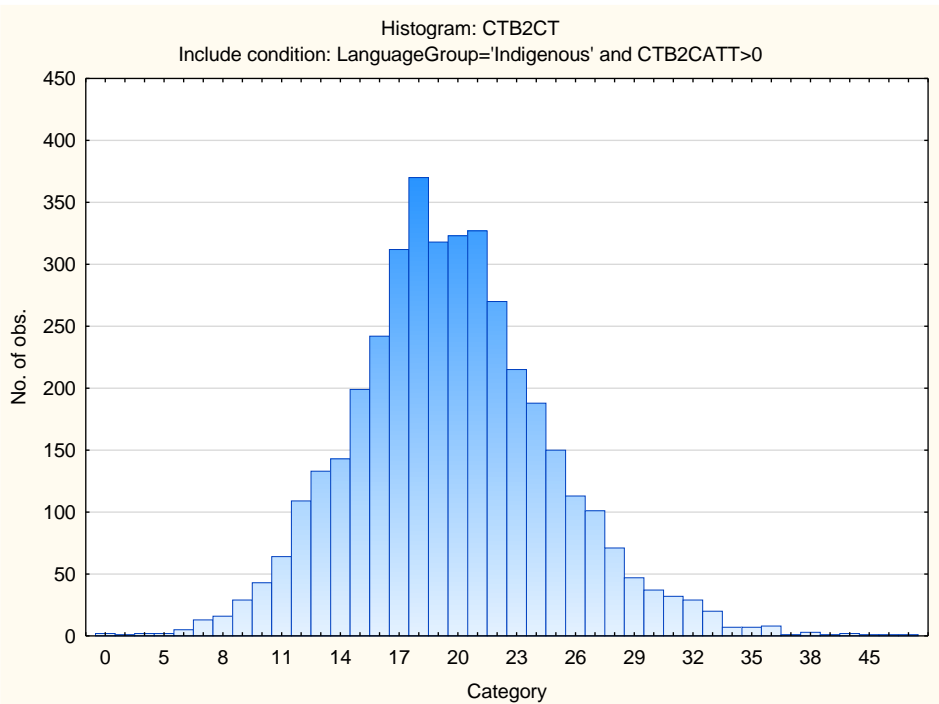
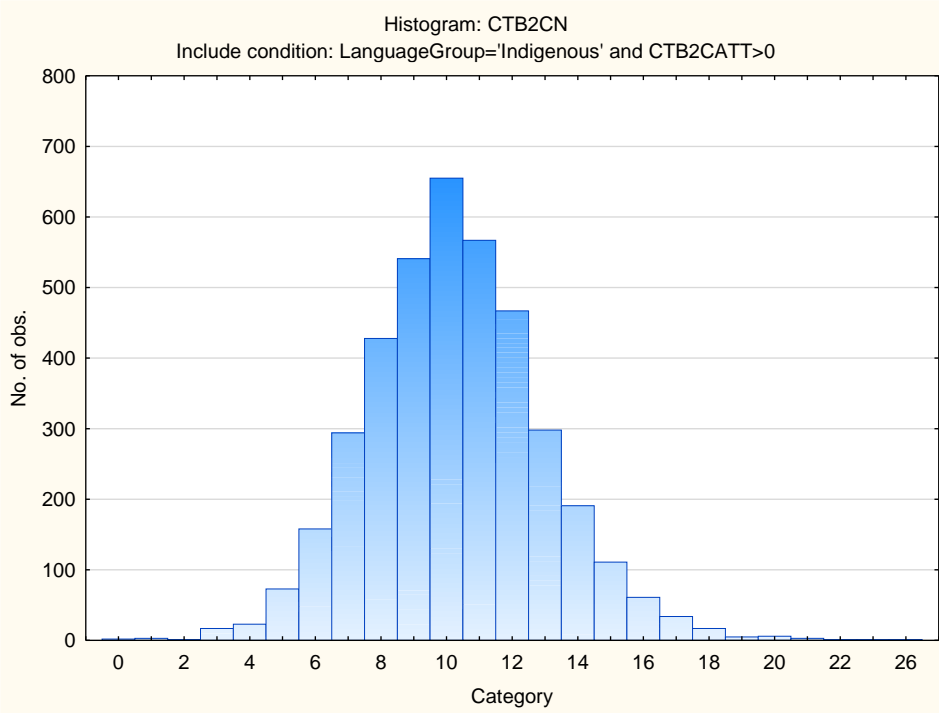
Variable	Descriptive Statistics: Age					
	Mean	Std.Dev	Minimum	Maximum	N	No.cases Missing
Age	30.15664	6.841773	17.00000	62.00000	3141	596

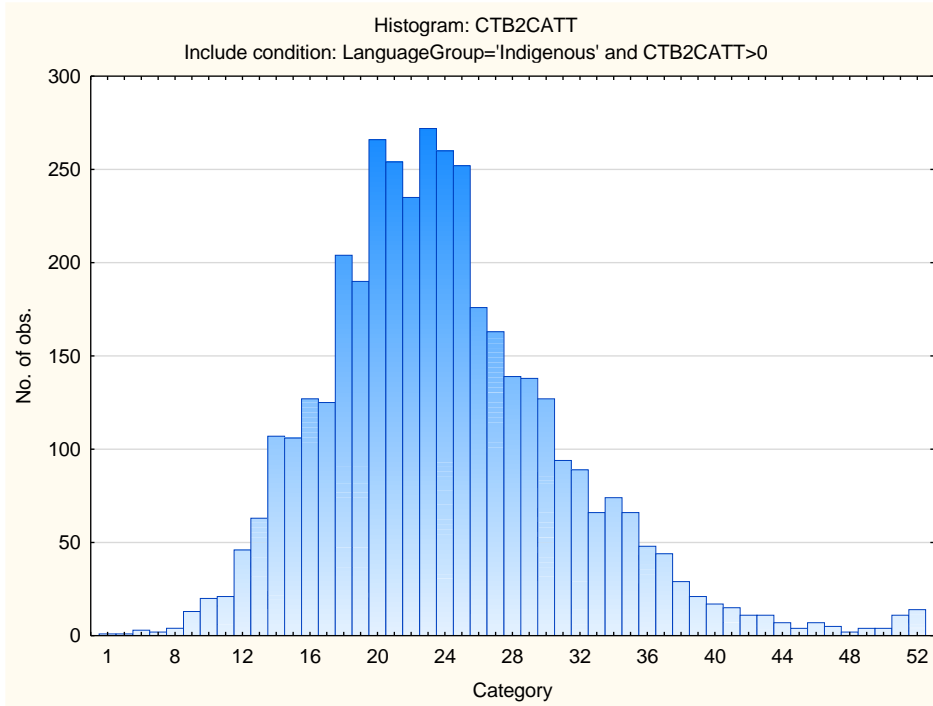


Descriptive Statistics on Clerical Test Battery Subtests

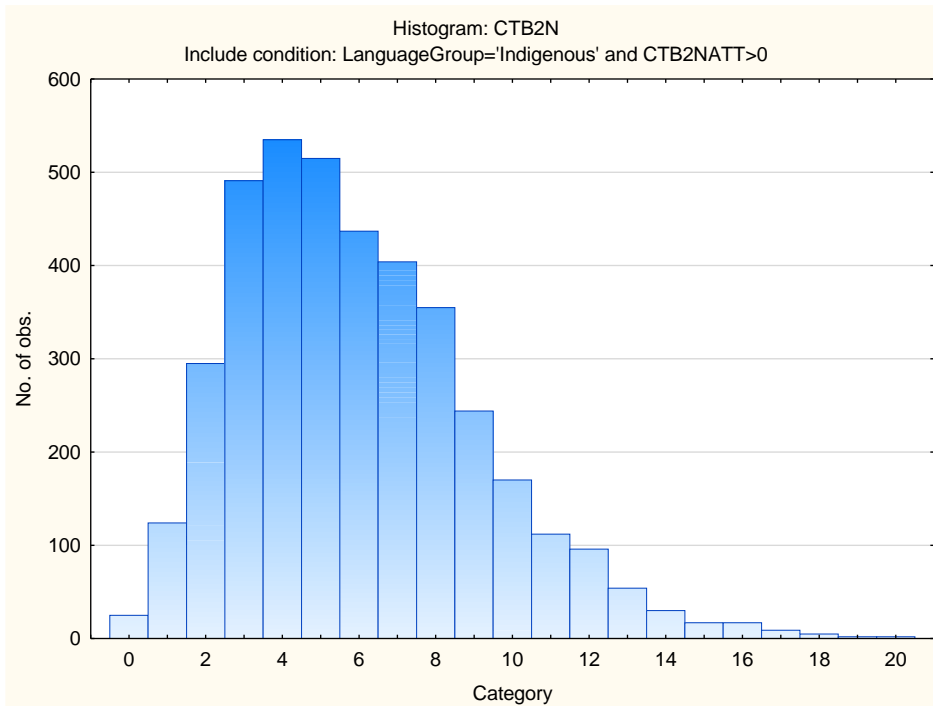
Variable	Descriptive Statistics: Clerical Checking Subtest					
	Mean	Std.Dev	Minimum	Maximum	N	No.cases Missing
CTB2CV	9.42496	2.846739	0.000000	26.00000	3958	0
CTB2CN	10.26402	2.706197	0.000000	26.00000	3958	0
CTB2CT	19.68898	5.142551	0.000000	52.00000	3958	0
CTB2CATT	23.98029	7.148387	1.000000	52.00000	3958	0

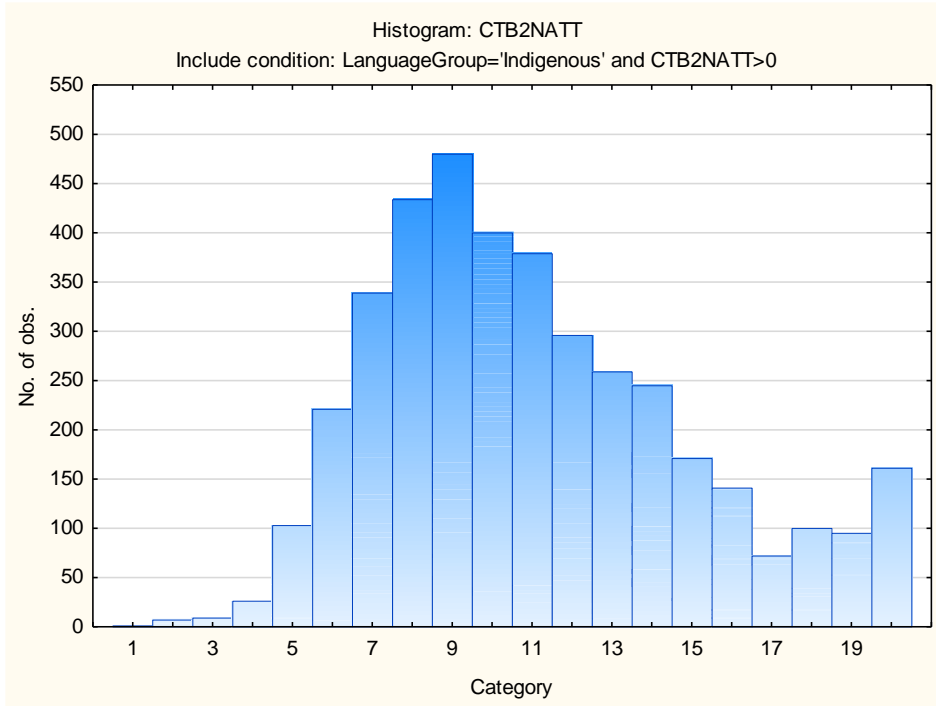




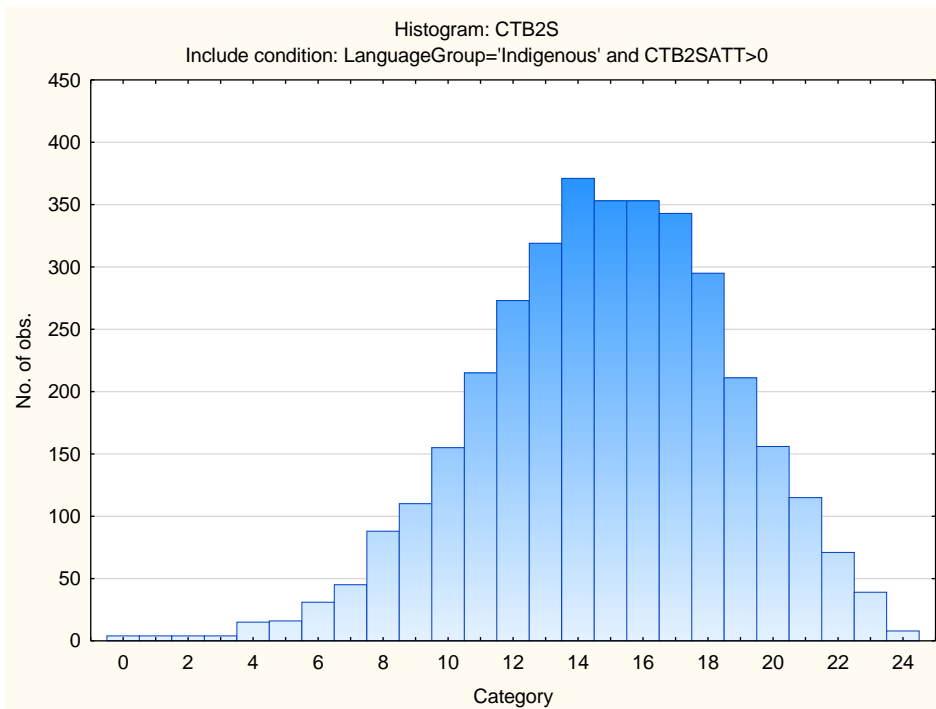


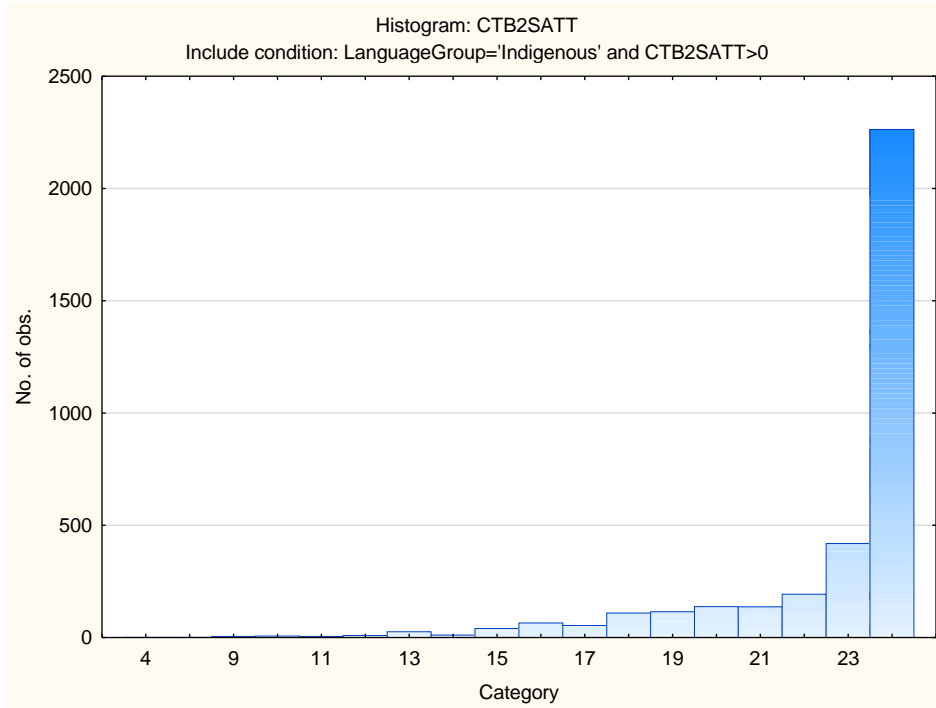
Variable	Descriptive Statistics: Numerical Reasoning Subtest					
	Mean	Std.Dev	Minimum	Maximum	N	No.cases Missing
CTB2N	5.95126	3.145476	0.000000	20.00000	3939	0
CTB2NATT	11.05357	3.896832	1.000000	20.00000	3939	0



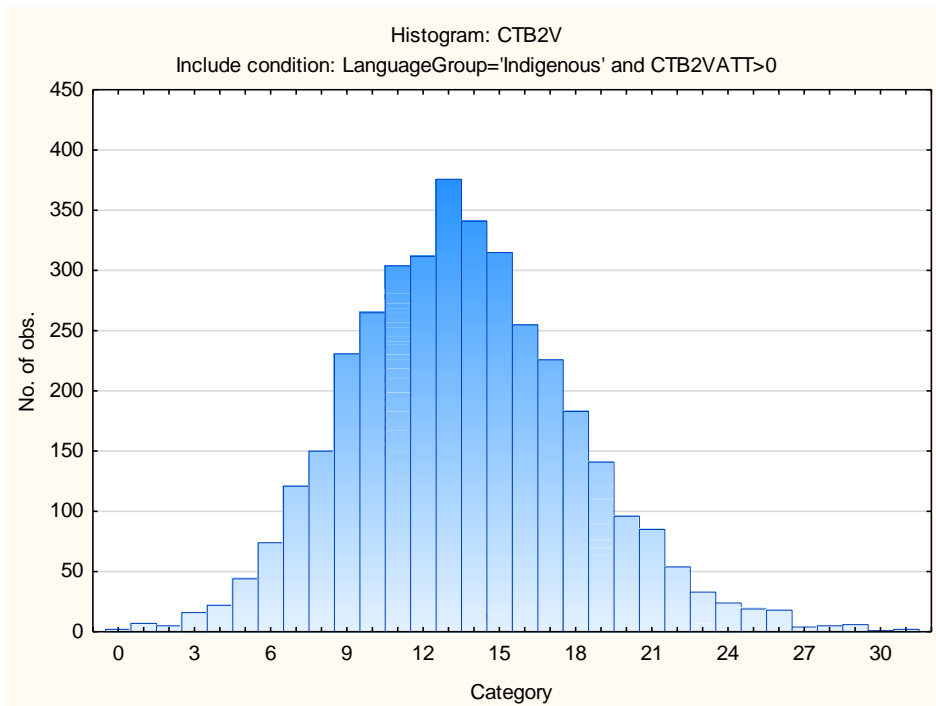


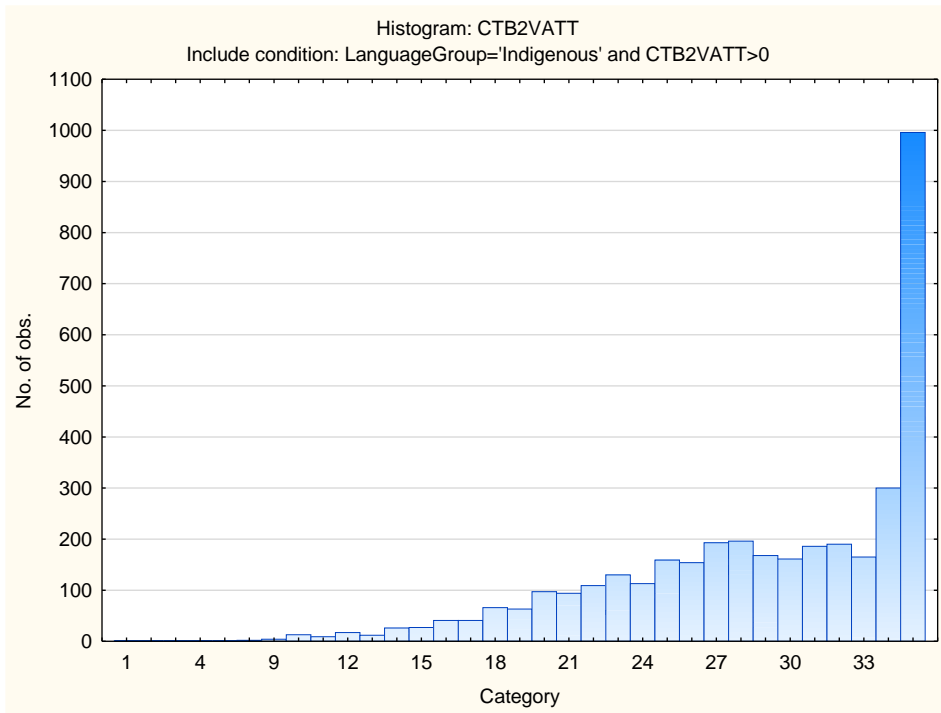
Variable	Descriptive Statistics: Spelling Subtest					
	Mean	Std.Dev	Minimum	Maximum	N	No.cases Missing
CTB2S	14.77765	3.862889	0.000000	24.00000	3598	0
CTB2SATT	22.60089	2.583435	4.000000	24.00000	3598	0





Variable	Descriptive Statistics: Verbal Reasoning Subtest					
	Mean	Std.Dev	Minimum	Maximum	N	No.cases Missing
CTB2V	13.55312	4.462301	0.000000	31.00000	3737	0
CTB2VATT	28.87557	6.119289	1.000000	35.00000	3737	0





Stanine Table

Scales	Stanine Groups								
	S9_1	S9_2	S9_3	S9_4	S9_5	S9_6	S9_7	S9_8	S9_9
Verbal Reasoning	0-5	6-7	8-10	11-12	13-14	15-16	17-19	20-21	22-31
Numerical Ability	0-0	1-2	3-3	4-5	6-6	7-8	9-9	10-11	12-20
Clerical Checking - Verbal	0-4	5-5	6-7	8-8	9-10	11-11	12-12	13-14	15-26
Clerical Checking - Numerical	0-5	6-6	7-8	9-9	10-10	11-12	13-13	14-14	15-26
Clerical Checking - Total	0-10	11-13	14-15	16-18	19-20	21-23	24-26	27-28	29-52
Spelling	0-8	9-9	10-11	12-13	14-15	16-17	18-19	20-21	22-24