

Clerical Test Battery 2 (CTB2)

Norm Group: SA isiXhosa Language Speakers, Updated 2022

Sample Composition

The sample consisted of respondents who had completed any of the subtests of the Clerical Test Battery (CTB2) battery in the period March 2013 to March 2022. Since not all the respondents completed all the subtests, biographical information is reported separately.

Sample Composition: Clerical Checking Subtest (CTB2C)

Category	Frequency table: Sex			
	Count	Cumulative Count	Percent	Cumulative Percent
F	692	692	66.15679	66.1568
M	354	1046	33.84321	100.0000
Missing	0	1046	0.00000	100.0000

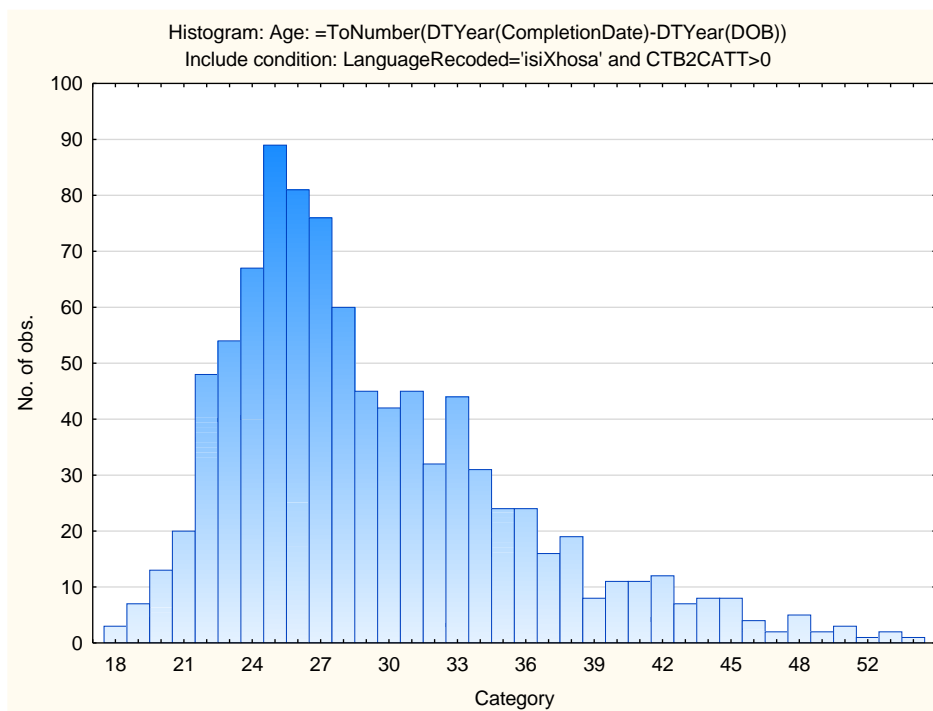
Category	Frequency table: Education			
	Count	Cumulative Count	Percent	Cumulative Percent
Grade 12	393	393	37.57170	37.5717
Tertiary Cert / Trade	329	722	31.45315	69.0249
Tertiary	253	975	24.18738	93.2122
Post Graduate	46	1021	4.39771	97.6099
< Matric	5	1026	0.47801	98.0880
Missing	20	1046	1.91205	100.0000

Category	Frequency table: Race			
	Count	Cumulative Count	Percent	Cumulative Percent
Coloured	6	6	0.57361	0.5736
African	1002	1008	95.79350	96.3671
Asian	2	1010	0.19120	96.5583
European	1	1011	0.09560	96.6539
Missing	35	1046	3.34608	100.0000

Category	Frequency table: Language			
	Count	Cumulative Count	Percent	Cumulative Percent
isiXhosa	1046	1046	100.0000	100.0000
Missing	0	1046	0.0000	100.0000

Category	Frequency table: Language Group			
	Count	Cumulative Count	Percent	Cumulative Percent
Indigenous	1046	1046	100.0000	100.0000
Missing	0	1046	0.0000	100.0000

Variable	Descriptive Statistics: Age					
	Mean	Std.Dev	Minimum	Maximum	N	No.cases Missing
Age	29.23568	6.368604	18.00000	55.00000	925	121



Sample Composition: Numerical Subtest (CTB2N)

Category	Frequency table: Sex			
	Count	Cumulative Count	Percent	Cumulative Percent
F	689	689	66.05944	66.0594
M	354	1043	33.94056	100.0000
Missing	0	1043	0.00000	100.0000

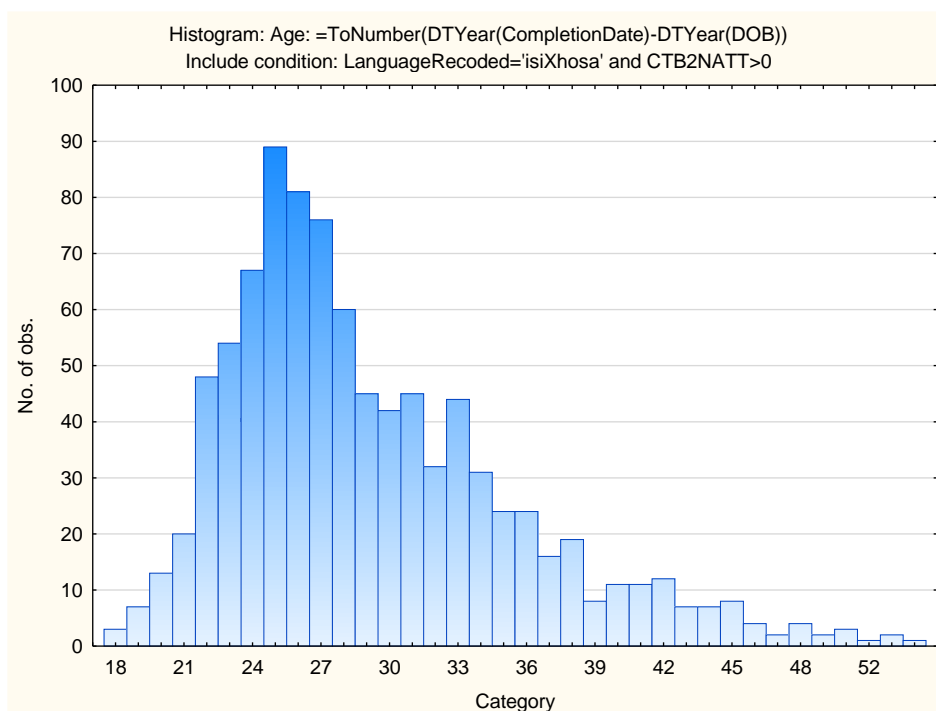
Category	Frequency table: Education			
	Count	Cumulative Count	Percent	Cumulative Percent
Grade 12	391	391	37.48802	37.4880
Tertiary Cert / Trade	329	720	31.54362	69.0316
Tertiary	253	973	24.25695	93.2886
Post Graduate	45	1018	4.31448	97.6031
< Matric	5	1023	0.47939	98.0825
Missing	20	1043	1.91755	100.0000

Category	Frequency table: Race			
	Count	Cumulative Count	Percent	Cumulative Percent
Coloured	6	6	0.57526	0.5753
African	999	1005	95.78140	96.3567
Asian	2	1007	0.19175	96.5484
European	1	1008	0.09588	96.6443
Missing	35	1043	3.35570	100.0000

Category	Frequency table: Language			
	Count	Cumulative Count	Percent	Cumulative Percent
isiXhosa	1043	1043	100.0000	100.0000
Missing	0	1043	0.0000	100.0000

Category	Frequency table: Language Group			
	Count	Cumulative Count	Percent	Cumulative Percent
Indigenous	1043	1043	100.0000	100.0000
Missing	0	1043	0.0000	100.0000

Variable	Descriptive Statistics: Age					
	Mean	Std.Dev	Minimum	Maximum	N	No.cases Missing
Age	29.19935	6.326726	18.00000	55.00000	923	120



Sample Composition: Clerical Spelling Subtest (CTB2S)

Category	Frequency table: Sex			
	Count	Cumulative Count	Percent	Cumulative Percent
F	605	605	64.98389	64.9839
M	326	931	35.01611	100.0000
Missing	0	931	0.00000	100.0000

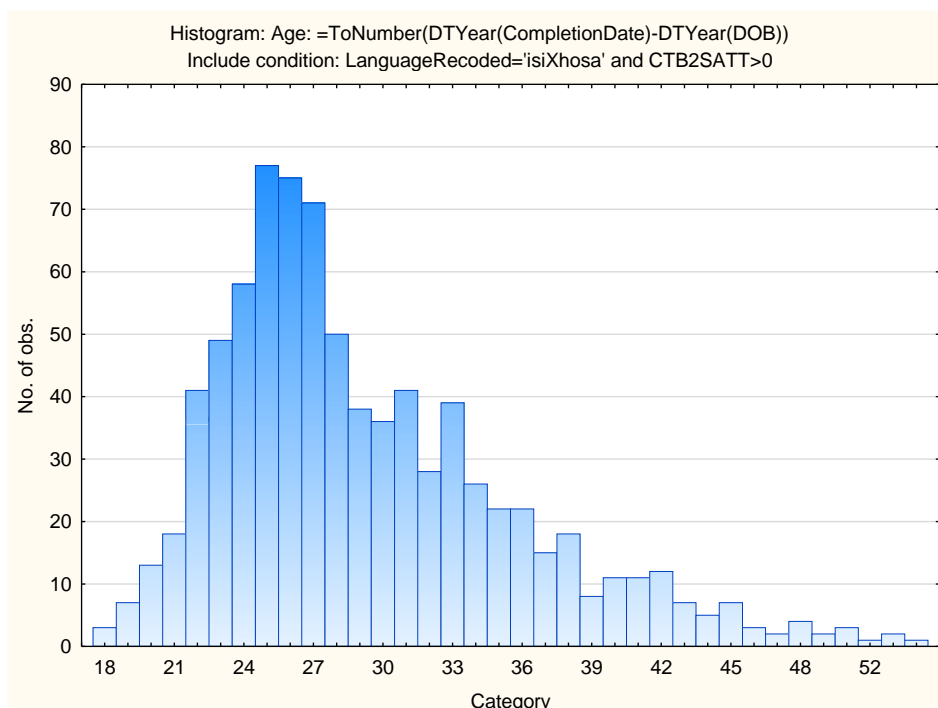
Category	Frequency table: Education			
	Count	Cumulative Count	Percent	Cumulative Percent
Grade 12	364	364	39.09774	39.0977
Tertiary Cert / Trade	290	654	31.14930	70.2470
Tertiary	220	874	23.63050	93.8776
Post Graduate	39	913	4.18904	98.0666
< Matric	4	917	0.42965	98.4962
Missing	14	931	1.50376	100.0000

Category	Frequency table: Race			
	Count	Cumulative Count	Percent	Cumulative Percent
Coloured	6	6	0.64447	0.6445
African	895	901	96.13319	96.7777
Asian	2	903	0.21482	96.9925
European	1	904	0.10741	97.0999
Missing	27	931	2.90011	100.0000

Category	Frequency table: Language			
	Count	Cumulative Count	Percent	Cumulative Percent
isiXhosa	931	931	100.0000	100.0000
Missing	0	931	0.0000	100.0000

Category	Frequency table: Language Group			
	Count	Cumulative Count	Percent	Cumulative Percent
Indigenous	931	931	100.0000	100.0000
Missing	0	931	0.0000	100.0000

Variable	Descriptive Statistics: Age					
	Mean	Std.Dev	Minimum	Maximum	N	No.cases Missing
Age:	29.28208	6.433932	18.00000	55.00000	826	105



Sample Composition: Clerical Verbal Subtest (CTB2V)

Category	Frequency table: Sex			
	Count	Cumulative Count	Percent	Cumulative Percent
F	626	626	65.07277	65.0728
M	336	962	34.92723	100.0000
Missing	0	962	0.00000	100.0000

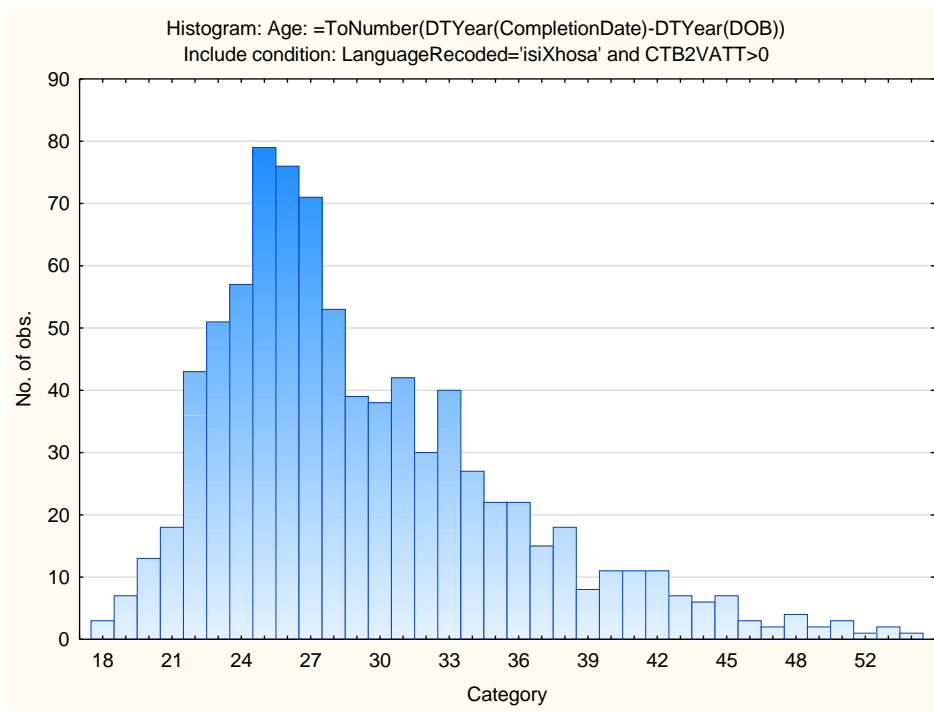
Category	Frequency table: Education			
	Count	Cumulative Count	Percent	Cumulative Percent
Grade 12	374	374	38.87734	38.8773
Tertiary Cert / Trade	300	674	31.18503	70.0624
Tertiary	224	898	23.28482	93.3472
Post Graduate	40	938	4.15800	97.5052
< Matric	4	942	0.41580	97.9210
Missing	20	962	2.07900	100.0000

Category	Frequency table: Race			
	Count	Cumulative Count	Percent	Cumulative Percent
Coloured	6	6	0.62370	0.6237
African	918	924	95.42620	96.0499
Asian	2	926	0.20790	96.2578
European	1	927	0.10395	96.3617
Missing	35	962	3.63825	100.0000

Category	Frequency table: Language			
	Count	Cumulative Count	Percent	Cumulative Percent
isiXhosa	962	962	100.0000	100.0000
Missing	0	962	0.0000	100.0000

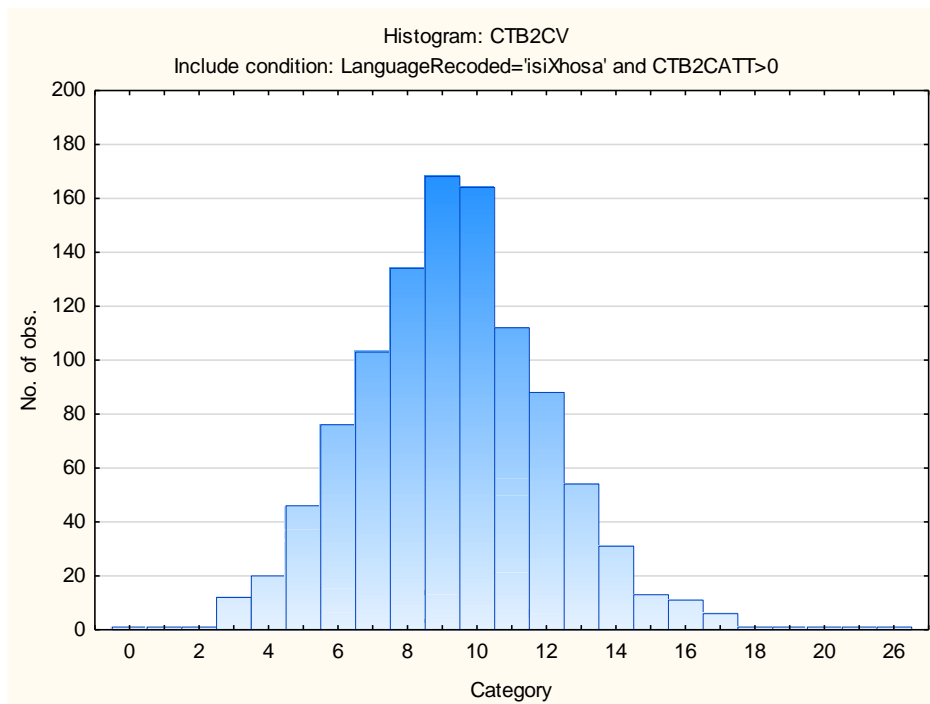
Category	Frequency table: Language Group			
	Count	Cumulative Count	Percent	Cumulative Percent
Indigenous	962	962	100.0000	100.0000
Missing	0	962	0.0000	100.0000

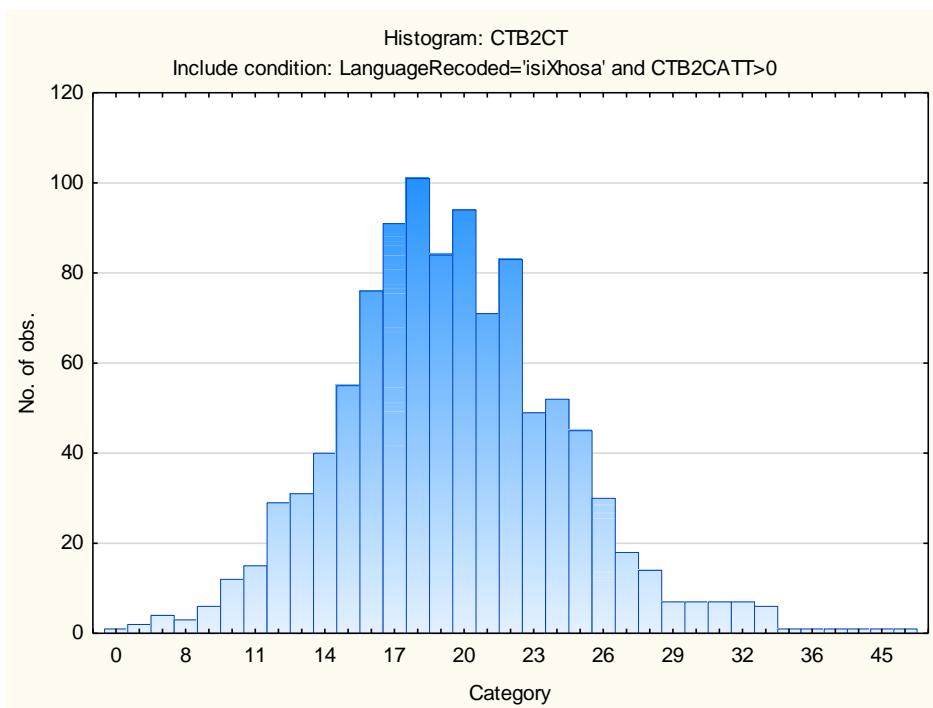
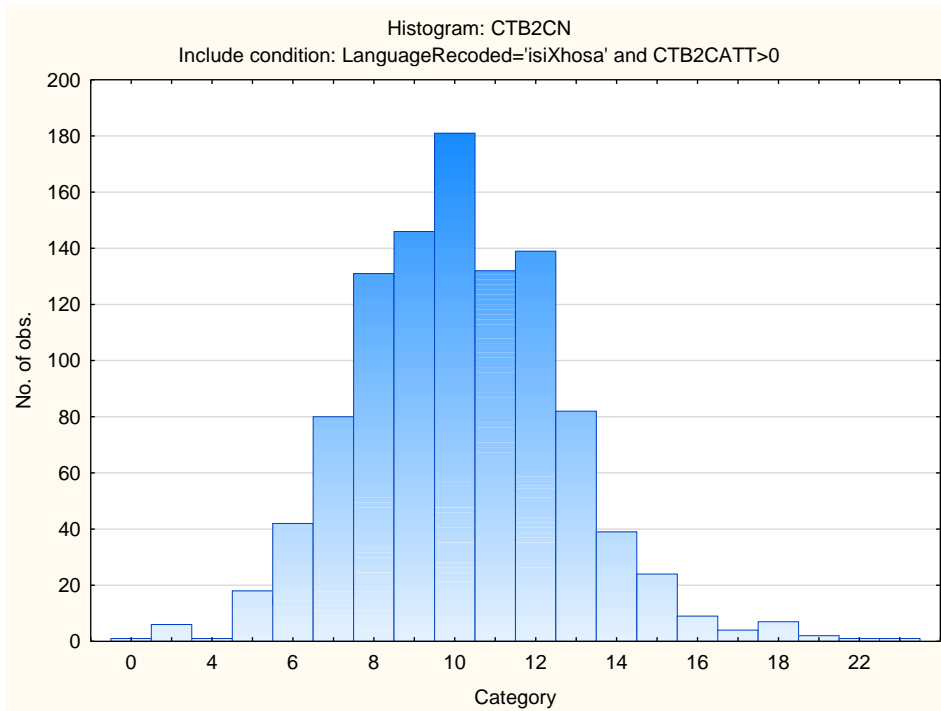
Variable	Descriptive Statistics: Age					
	Mean	Std.Dev	Minimum	Maximum	N	No.cases Missing
Age	29.25979	6.398310	18.00000	55.00000	843	119

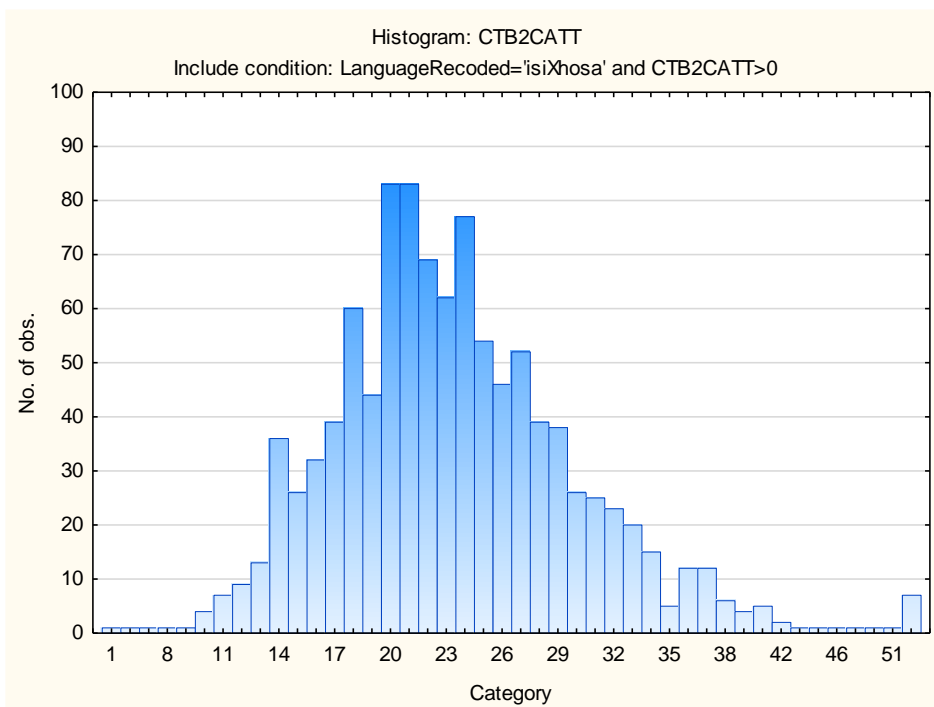


Descriptive Statistics on Clerical Test Battery Subtests

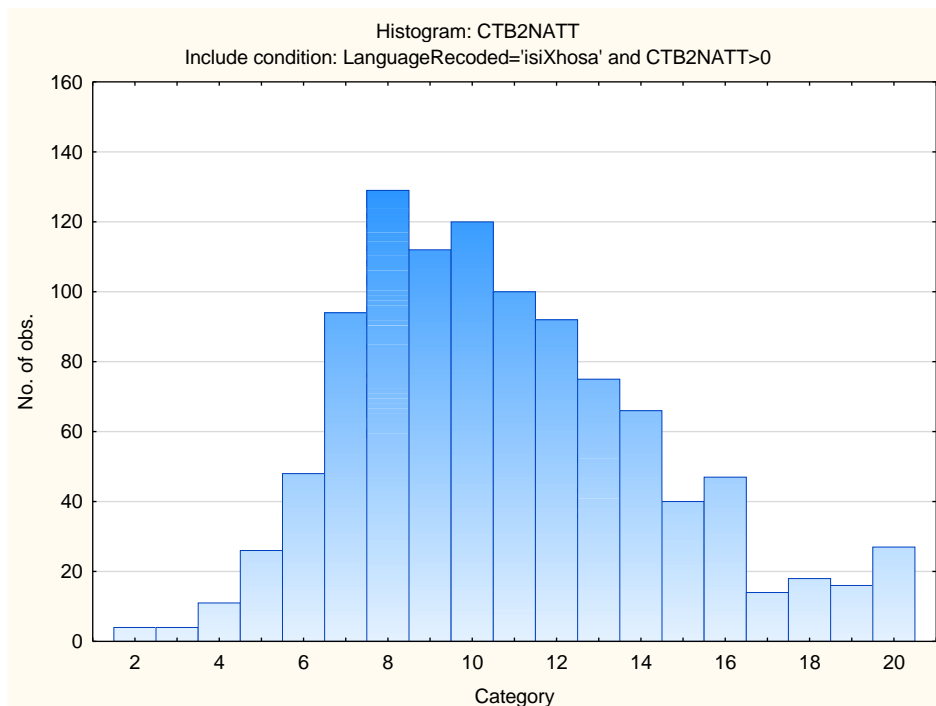
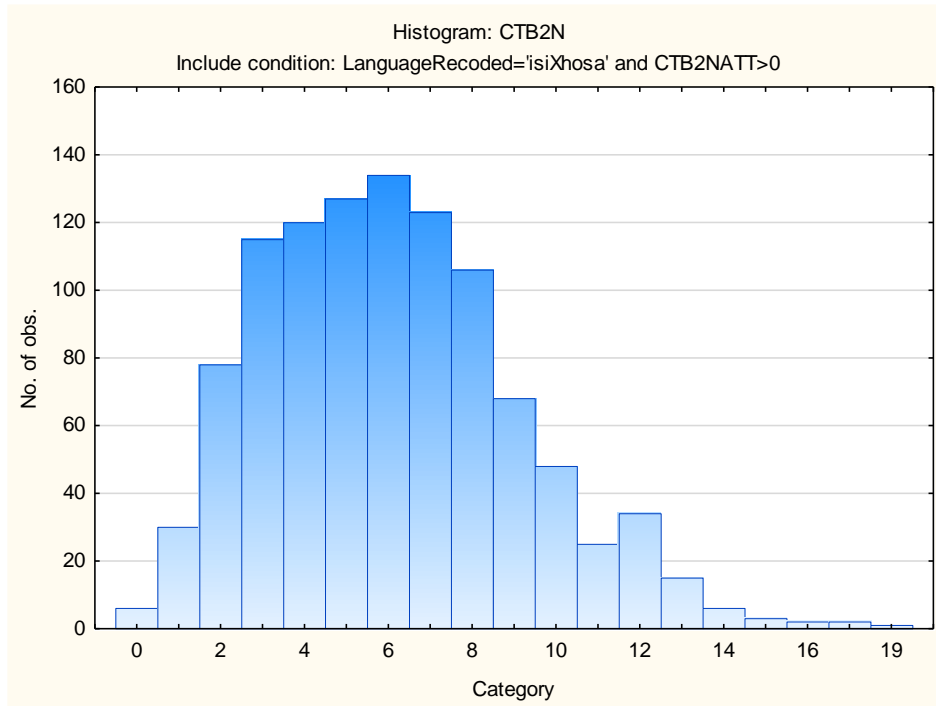
Variable	Descriptive Statistics: Clerical Checking Subtest					
	Mean	Std.Dev	Minimum	Maximum	N	No.cases Missing
CTB2CV	9.32409	2.801765	0.000000	26.00000	1046	0
CTB2CN	10.14723	2.613423	0.000000	26.00000	1046	0
CTB2CT	19.47132	4.992496	0.000000	52.00000	1046	0
CTB2CATT	23.49713	6.756991	1.000000	52.00000	1046	0



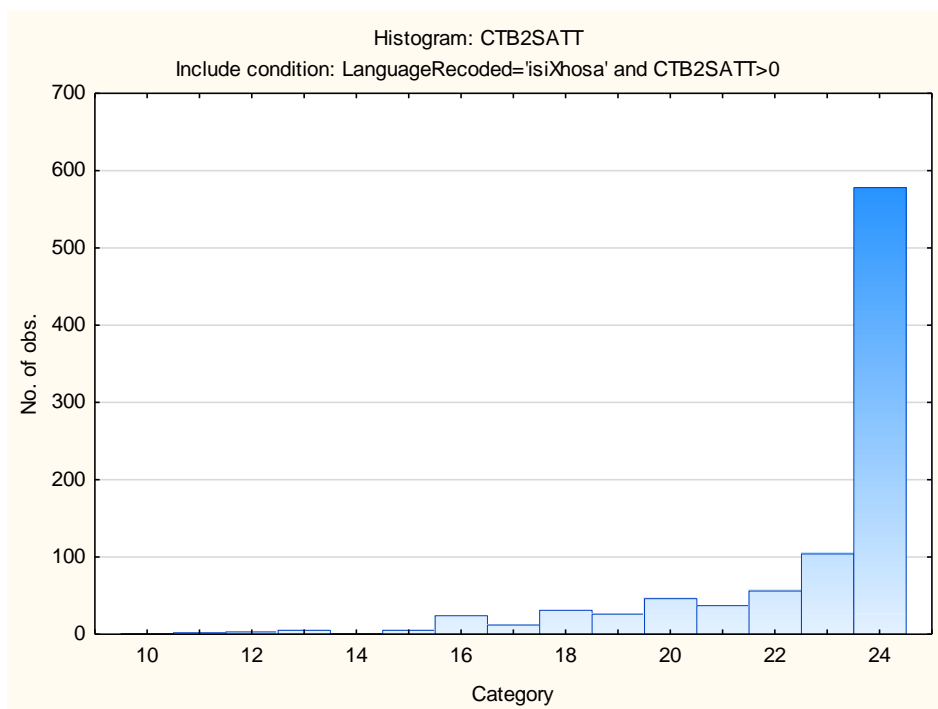
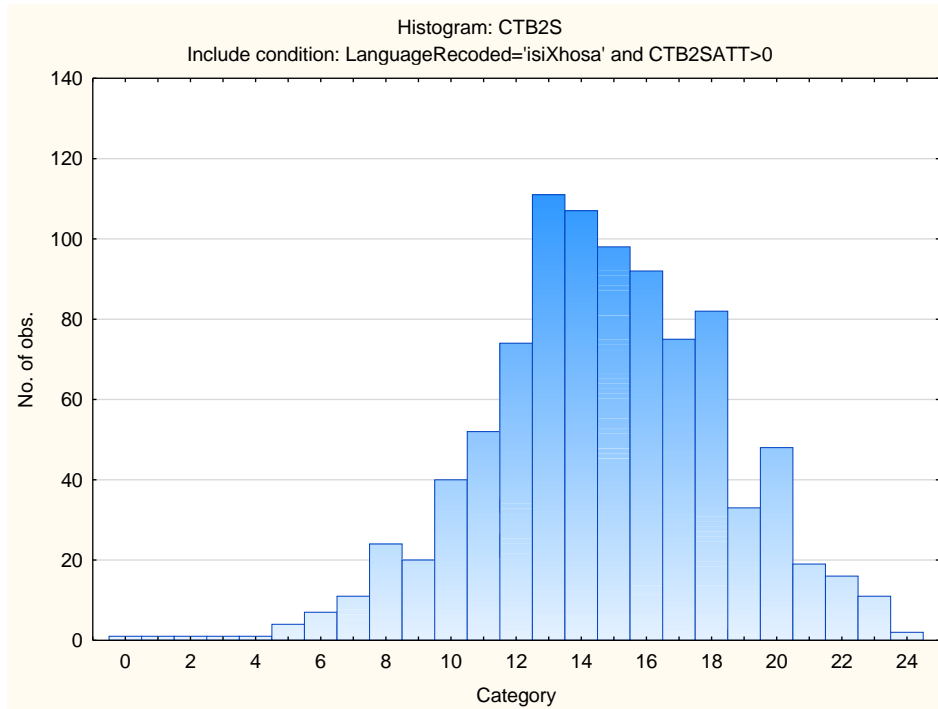




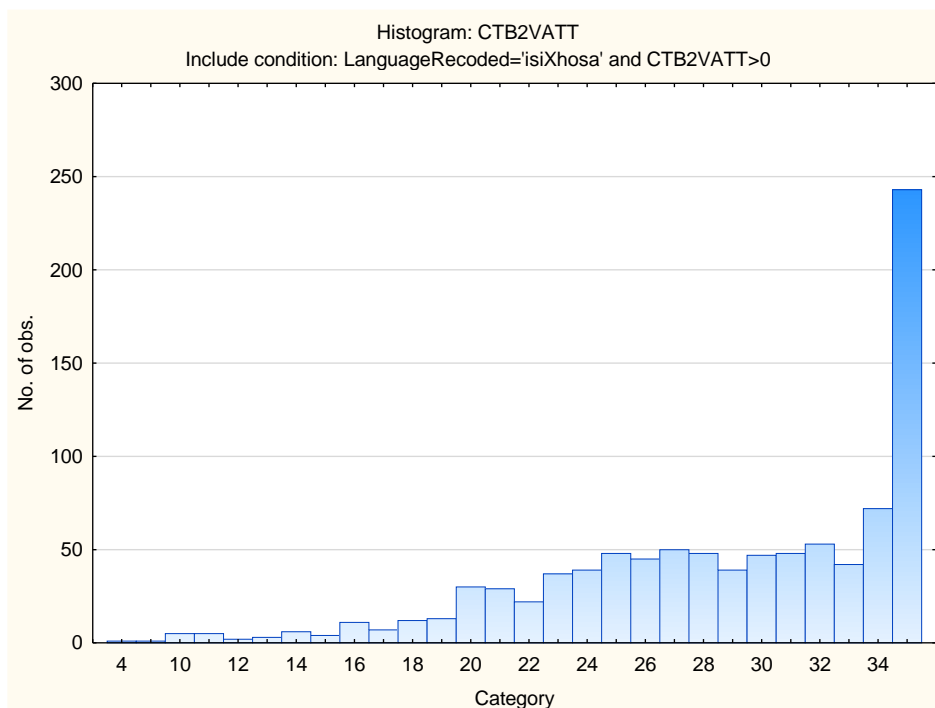
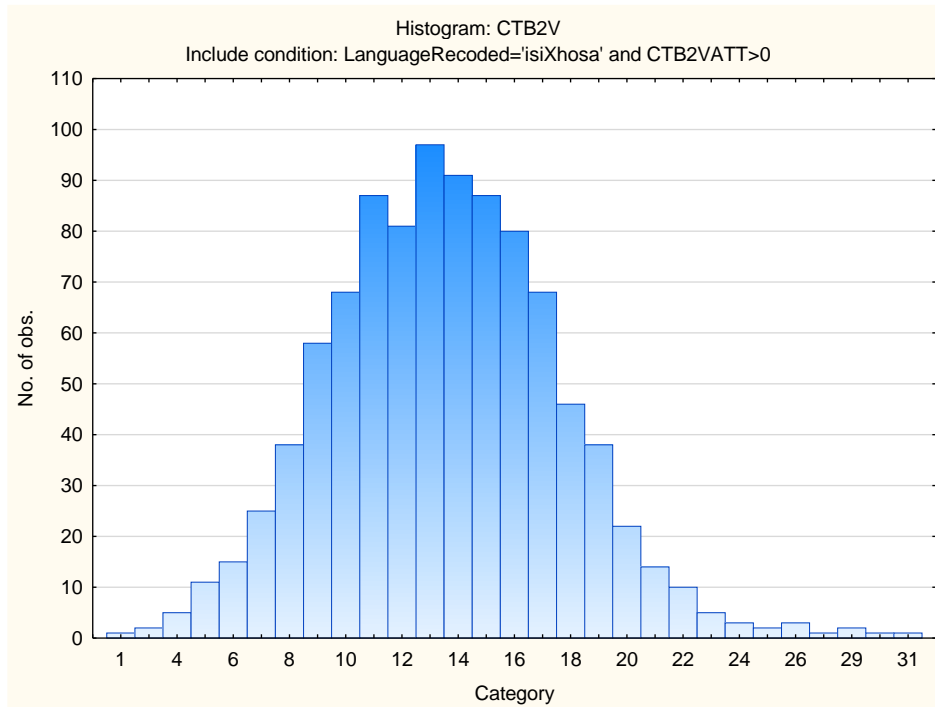
Variable	Descriptive Statistics: Numerical Reasoning Subtest					
	Mean	Std.Dev	Minimum	Maximum	N	No.cases Missing
CTB2N	6.08341	3.042208	0.000000	19.00000	1043	0
CTB2NATT	10.77756	3.643730	2.000000	20.00000	1043	0



Variable	Descriptive Statistics: Spelling Subtest					
	Mean	Std.Dev	Minimum	Maximum	N	No.cases Missing
CTB2S	14.66595	3.674836	0.00000	24.00000	931	0
CTB2SATT	22.61547	2.449125	10.00000	24.00000	931	0



Variable	Descriptive Statistics: Verbal Reasoning Subtest					
	Mean	Std.Dev	Minimum	Maximum	N	No.cases Missing
CTB2V	13.53846	4.116548	1.000000	31.000000	962	0
CTB2VATT	28.78482	5.994487	4.000000	35.000000	962	0



Stanine Table

Scales	Stanine Groups								
	S9_1	S9_2	S9_3	S9_4	S9_5	S9_6	S9_7	S9_8	S9_9
Verbal Reasoning	1-6	7-8	9-10	11-12	13-14	15-16	17-18	19-20	21-31
Numerical Ability	0-0	1-2	3-3	4-5	6-6	7-8	9-9	10-11	12-19
Clerical Checking - Verbal	0-4	5-5	6-7	8-8	9-10	11-11	12-12	13-14	15-26
Clerical Checking - Numerical	0-5	6-6	7-8	9-9	10-10	11-12	13-13	14-14	15-26
Clerical Checking - Total	0-10	11-13	14-15	16-18	19-20	21-23	24-25	26-28	29-52
Spelling	0-8	9-10	11-11	12-13	14-15	16-17	18-19	20-21	22-24