

Clerical Test Battery 2 (CTB2)

Norm Group: SA Sepedi Speakers, Updated 2022

Sample Composition

The sample consisted of respondents who had completed any of the subtests of the Clerical Test Battery (CTB2) battery in the period March 2013 to March 2022. Since not all the respondents completed all the subtests, biographical information is reported separately.

Sample Composition: Clerical Checking Subtest (CTB2C)

Category	Frequency table: Sex			
	Count	Cumulative Count	Percent	Cumulative Percent
F	270	270	55.90062	55.9006
M	210	480	43.47826	99.3789
Missing	3	483	0.62112	100.0000

Category	Frequency table: Education			
	Count	Cumulative Count	Percent	Cumulative Percent
Grade 12	105	105	21.73913	21.7391
Tertiary Cert / Trade	179	284	37.06004	58.7992
Tertiary	140	424	28.98551	87.7847
Post Graduate	42	466	8.69565	96.4803
< Matric	1	467	0.20704	96.6874
Missing	16	483	3.31263	100.0000

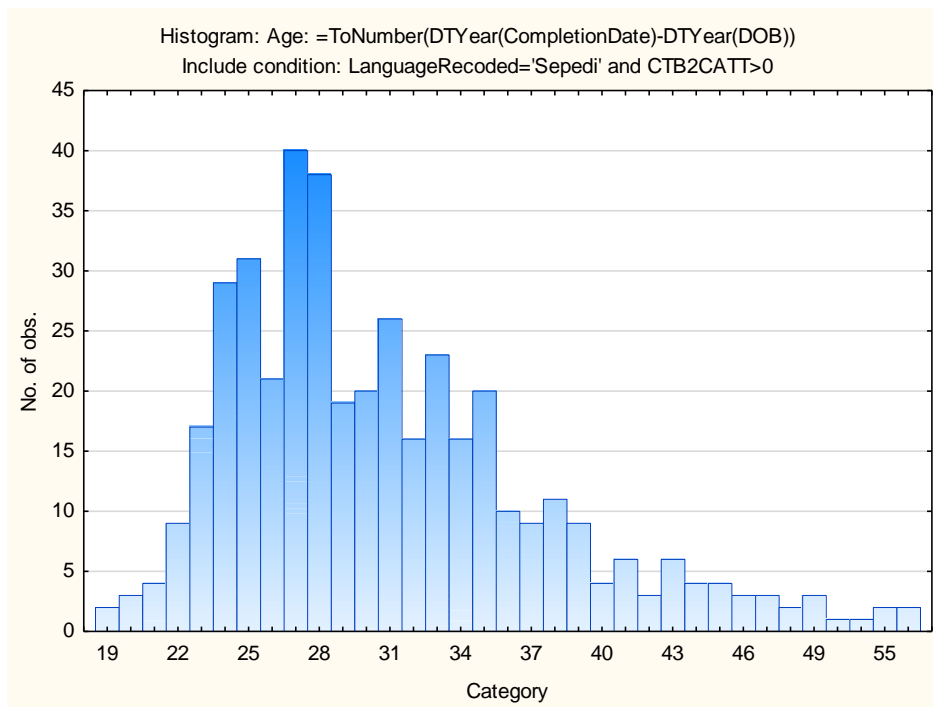
Category	Frequency table: Race			
	Count	Cumulative Count	Percent	Cumulative Percent
Coloured	1	1	0.20704	0.2070
African	471	472	97.51553	97.7226
Missing	11	483	2.27743	100.0000

Category	Frequency table: Language			
	Count	Cumulative Count	Percent	Cumulative Percent
Sepedi	483	483	100.0000	100.0000

Category	Frequency table: Language			
	Count	Cumulative Count	Percent	Cumulative Percent
Missing	0	483	0.0000	100.0000

Category	Frequency table: Language Group			
	Count	Cumulative Count	Percent	Cumulative Percent
Indigenous	483	483	100.0000	100.0000
Missing	0	483	0.0000	100.0000

Variable	Descriptive Statistics: Age					
	Mean	Std.Dev	Minimum	Maximum	N	No.cases Missing
Age	30.85132	6.833314	19.00000	59.00000	417	66



Sample Composition: Numerical Subtest (CTB2N)

Category	Frequency table: Sex			
	Count	Cumulative Count	Percent	Cumulative Percent
F	268	268	55.94990	55.9499
M	208	476	43.42380	99.3737
Missing	3	479	0.62630	100.0000

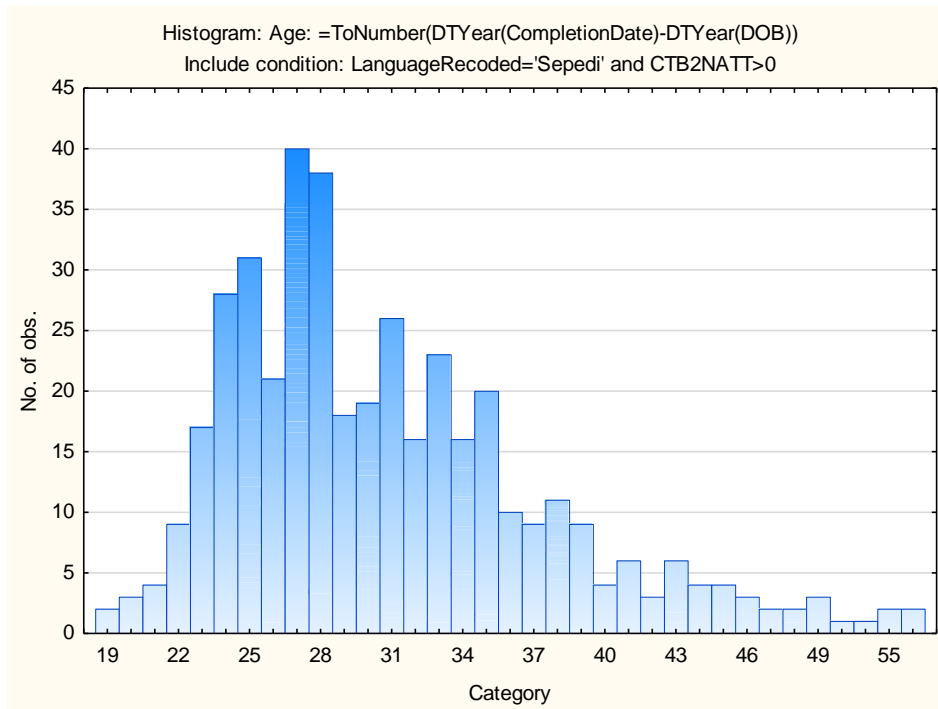
Category	Frequency table: Education			
	Count	Cumulative Count	Percent	Cumulative Percent
Grade 12	104	104	21.71190	21.7119
Tertiary Cert / Trade	179	283	37.36952	59.0814
Tertiary	139	422	29.01879	88.1002
Post Graduate	41	463	8.55950	96.6597
< Matric	1	464	0.20877	96.8685
Missing	15	479	3.13152	100.0000

Category	Frequency table: Race			
	Count	Cumulative Count	Percent	Cumulative Percent
Coloured	1	1	0.20877	0.2088
African	467	468	97.49478	97.7035
Missing	11	479	2.29645	100.0000

Category	Frequency table: Language			
	Count	Cumulative Count	Percent	Cumulative Percent
Sepedi	479	479	100.0000	100.0000
Missing	0	479	0.0000	100.0000

Category	Frequency table: Language Group			
	Count	Cumulative Count	Percent	Cumulative Percent
Indigenous	479	479	100.0000	100.0000
Missing	0	479	0.0000	100.0000

Variable	Descriptive Statistics: Age					
	Mean	Std.Dev	Minimum	Maximum	N	No.cases Missing
Age	30.83535	6.811043	19.00000	59.00000	413	66



Sample Composition: Clerical Spelling Subtest (CTB2S)

Category	Frequency table: Sex			
	Count	Cumulative Count	Percent	Cumulative Percent
F	253	253	55.84989	55.8499
M	197	450	43.48786	99.3377
Missing	3	453	0.66225	100.0000

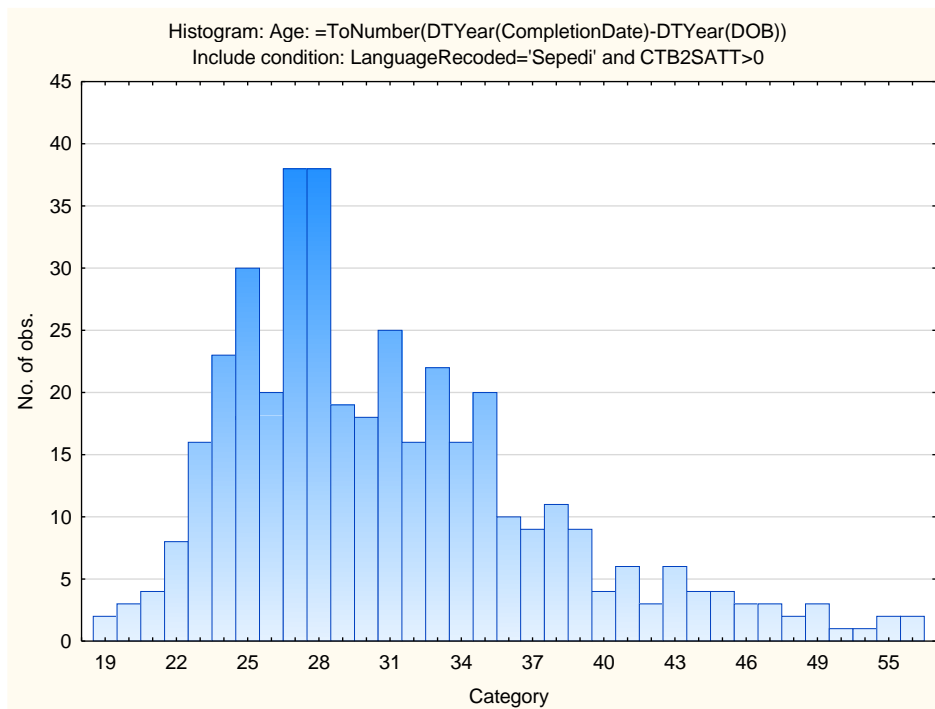
Category	Frequency table: Education			
	Count	Cumulative Count	Percent	Cumulative Percent
Grade 12	101	101	22.29581	22.2958
Tertiary Cert / Trade	169	270	37.30684	59.6026
Tertiary	130	400	28.69757	88.3002
Post Graduate	41	441	9.05077	97.3510
< Matric	1	442	0.22075	97.5717
Missing	11	453	2.42826	100.0000

Category	Frequency table: Race			
	Count	Cumulative Count	Percent	Cumulative Percent
Coloured	1	1	0.22075	0.2208
African	441	442	97.35099	97.5717
Missing	11	453	2.42826	100.0000

Category	Frequency table: Language			
	Count	Cumulative Count	Percent	Cumulative Percent
Sepedi	453	453	100.0000	100.0000
Missing	0	453	0.0000	100.0000

Category	Frequency table: Language Group			
	Count	Cumulative Count	Percent	Cumulative Percent
Indigenous	453	453	100.0000	100.0000
Missing	0	453	0.0000	100.0000

Variable	Descriptive Statistics: Age					
	Mean	Std.Dev	Minimum	Maximum	N	No.cases Missing
Age	31.03990	6.873020	19.00000	59.00000	401	52



Sample Composition: Clerical Verbal Subtest (CTB2V)

Category	Frequency table: Sex			
	Count	Cumulative Count	Percent	Cumulative Percent
F	256	256	55.89520	55.8952
M	199	455	43.44978	99.3450
Missing	3	458	0.65502	100.0000

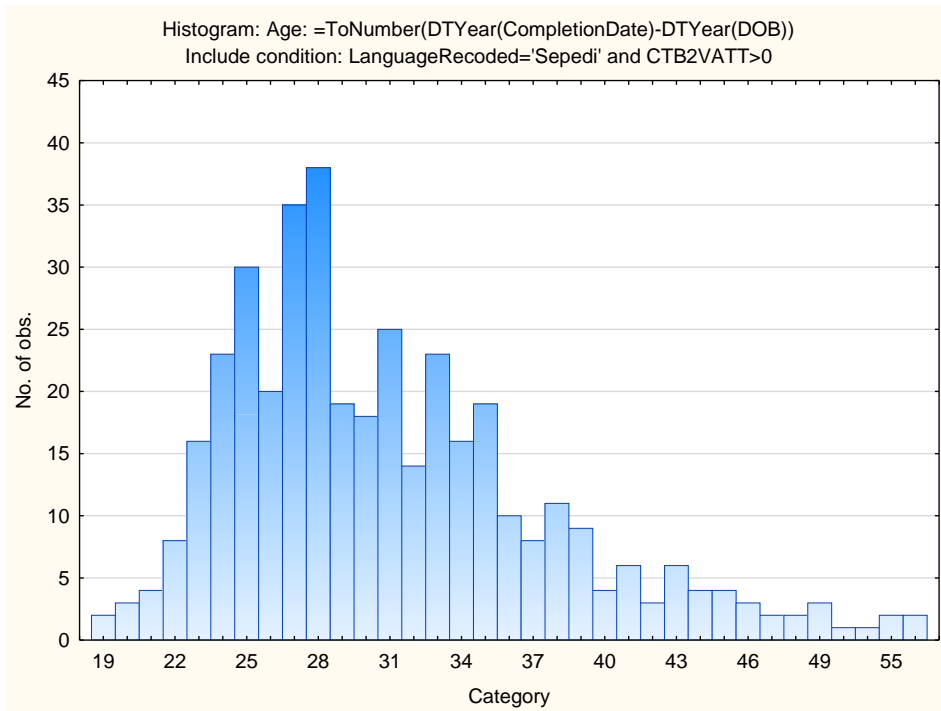
Category	Frequency table: Education			
	Count	Cumulative Count	Percent	Cumulative Percent
Grade 12	99	99	21.61572	21.6157
Tertiary Cert / Trade	171	270	37.33624	58.9520
Tertiary	132	402	28.82096	87.7729
Post Graduate	41	443	8.95197	96.7249
Missing	15	458	3.27511	100.0000

Category	Frequency table: Race			
	Count	Cumulative Count	Percent	Cumulative Percent
Coloured	1	1	0.21834	0.2183
African	446	447	97.37991	97.5983
Missing	11	458	2.40175	100.0000

Category	Frequency table: Language			
	Count	Cumulative Count	Percent	Cumulative Percent
Sepedi	458	458	100.0000	100.0000
Missing	0	458	0.0000	100.0000

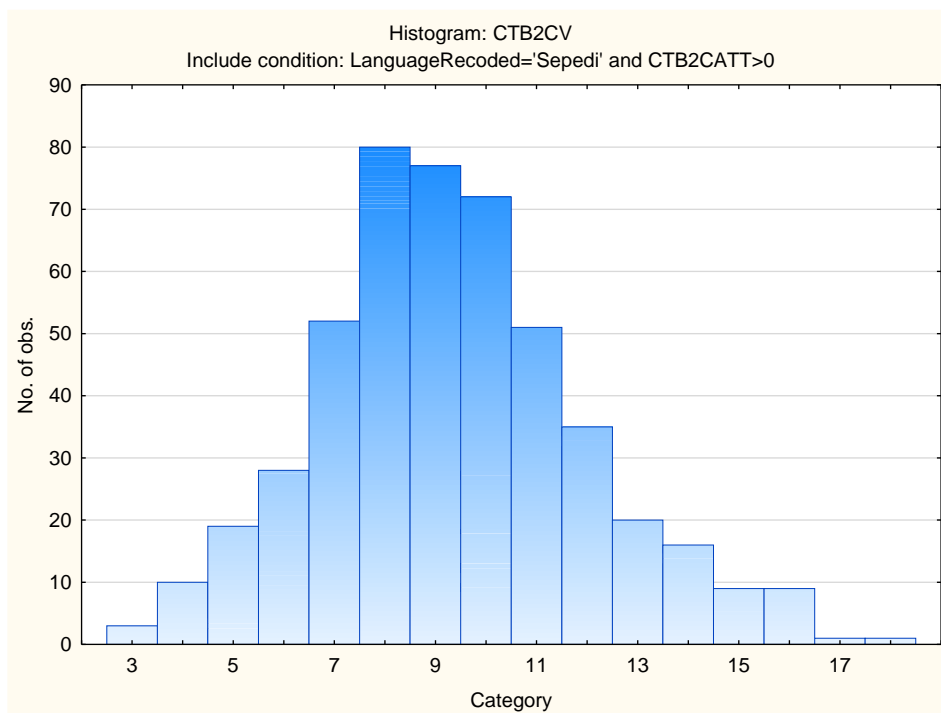
Category	Frequency table: Language Group			
	Count	Cumulative Count	Percent	Cumulative Percent
Indigenous	458	458	100.0000	100.0000
Missing	0	458	0.0000	100.0000

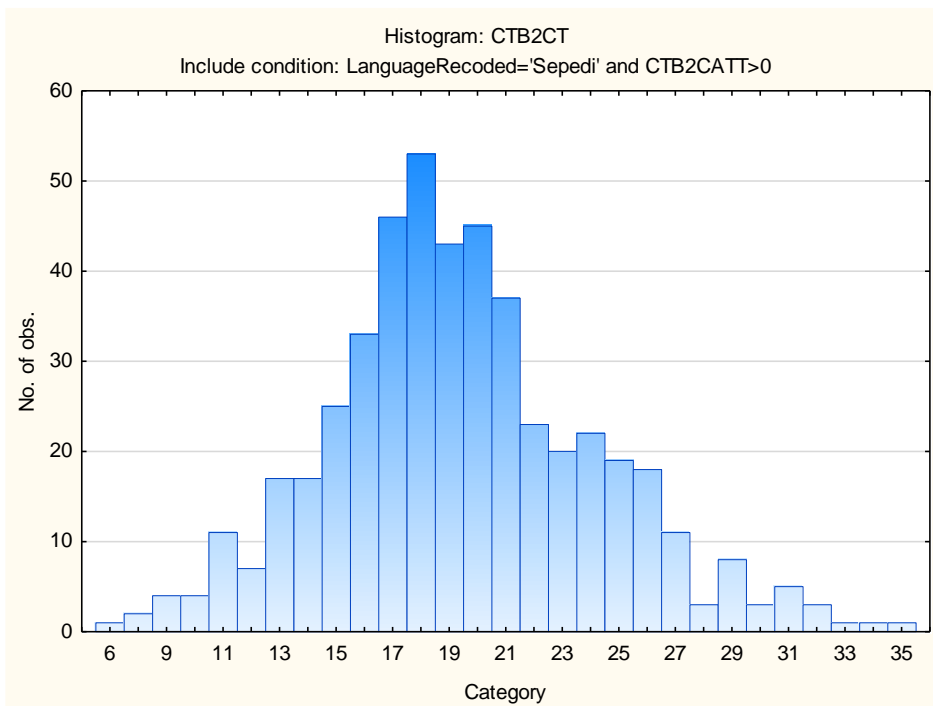
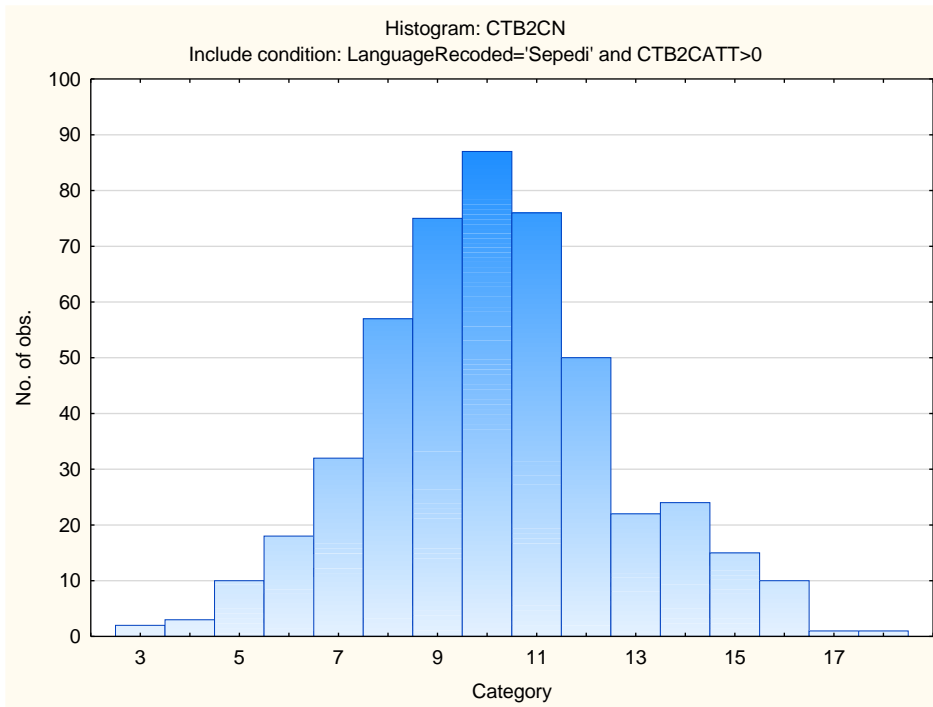
Variable	Descriptive Statistics: Age					
	Mean	Std.Dev	Minimum	Maximum	N	No.cases Missing
Age	31.00508	6.868816	19.00000	59.00000	394	64

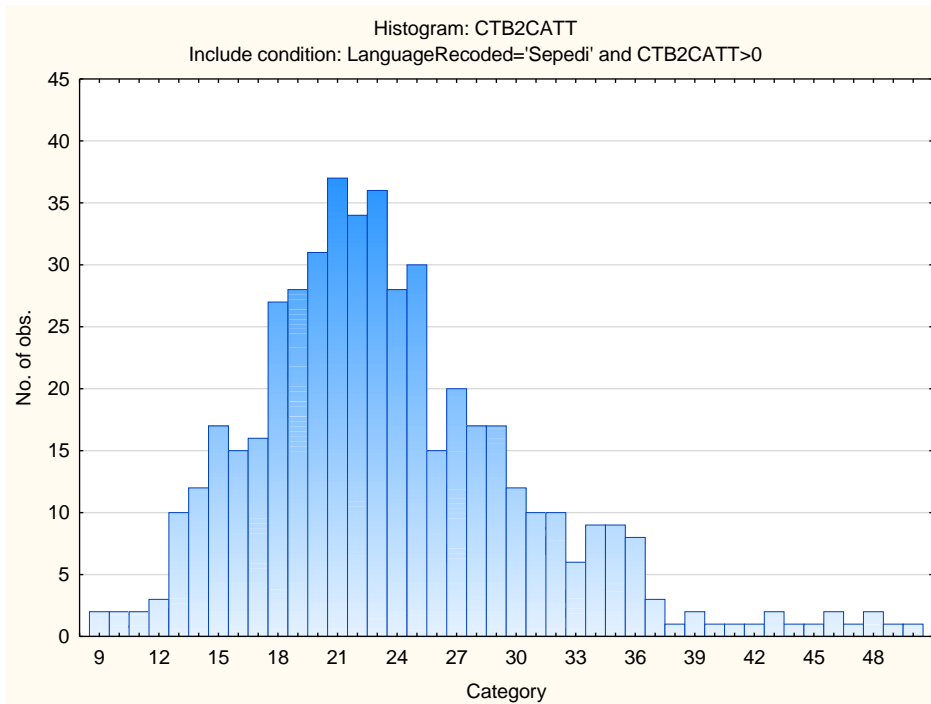


Descriptive Statistics on Clerical Test Battery Subtests

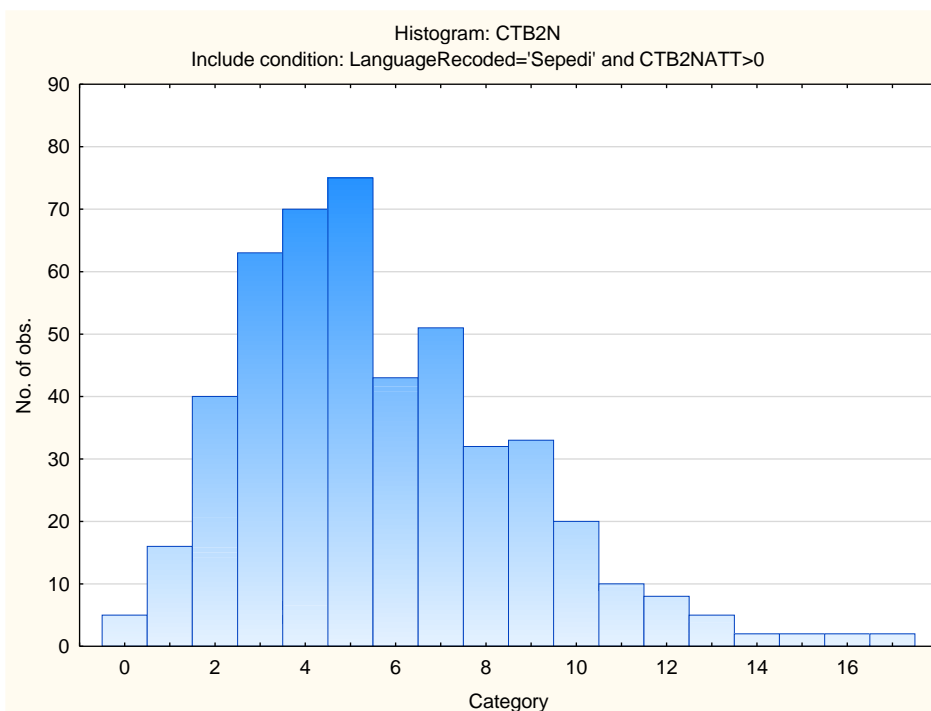
Variable	Descriptive Statistics: Clerical Checking Subtest					
	Mean	Std.Dev	Minimum	Maximum	N	No.cases Missing
CTB2CV	9.33540	2.651104	3.000000	19.000000	483	0
CTB2CN	10.10145	2.509744	3.000000	18.000000	483	0
CTB2CT	19.43685	4.757790	6.000000	35.000000	483	0
CTB2CATT	23.67081	7.007207	9.000000	52.000000	483	0

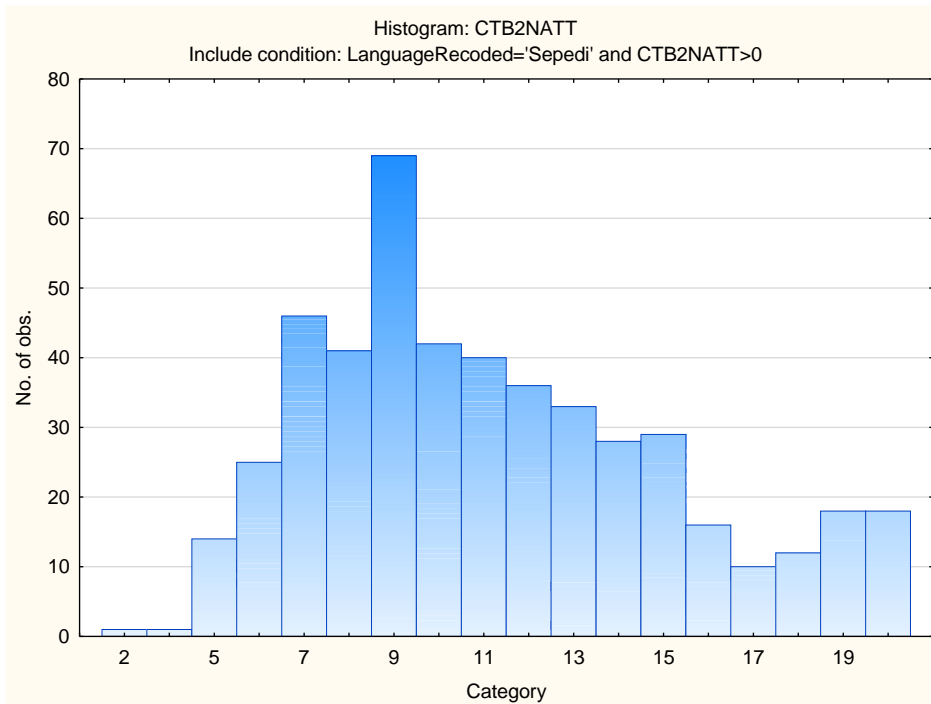




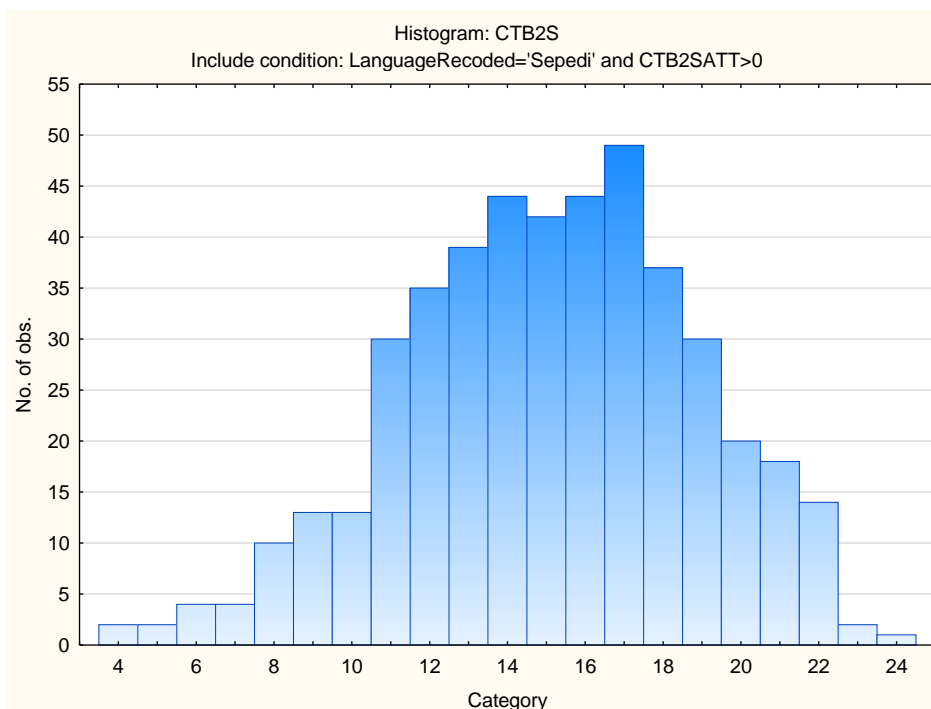


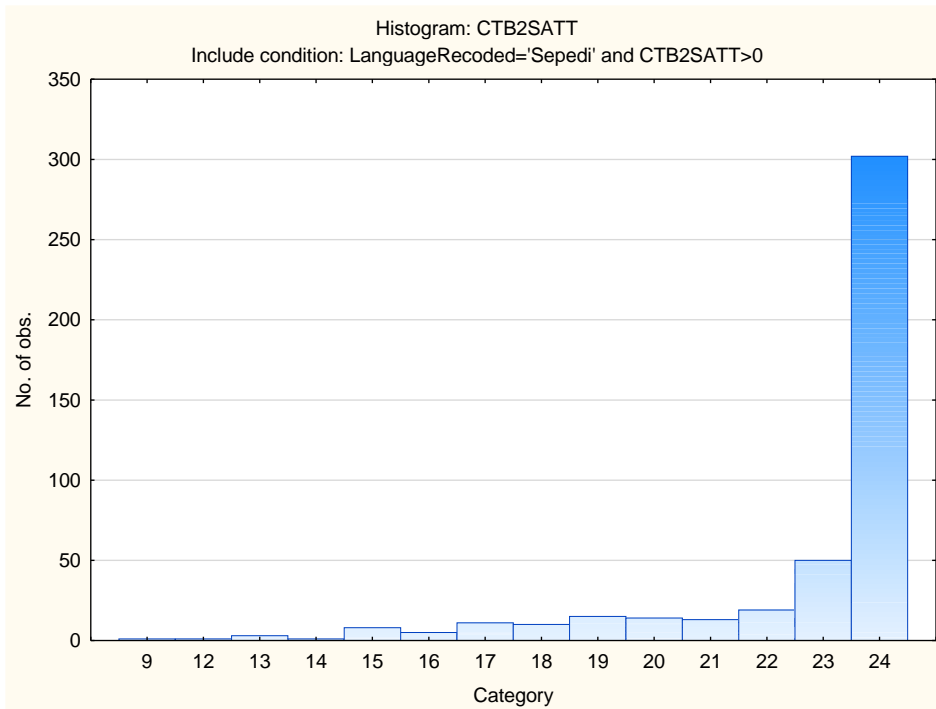
Variable	Descriptive Statistics: Numerical Reasoning Subtest					
	Mean	Std.Dev	Minimum	Maximum	N	No.cases Missing
CTB2N	5.64301	3.031202	0.000000	17.00000	479	0
CTB2NATT	11.25052	3.959507	2.000000	20.00000	479	0



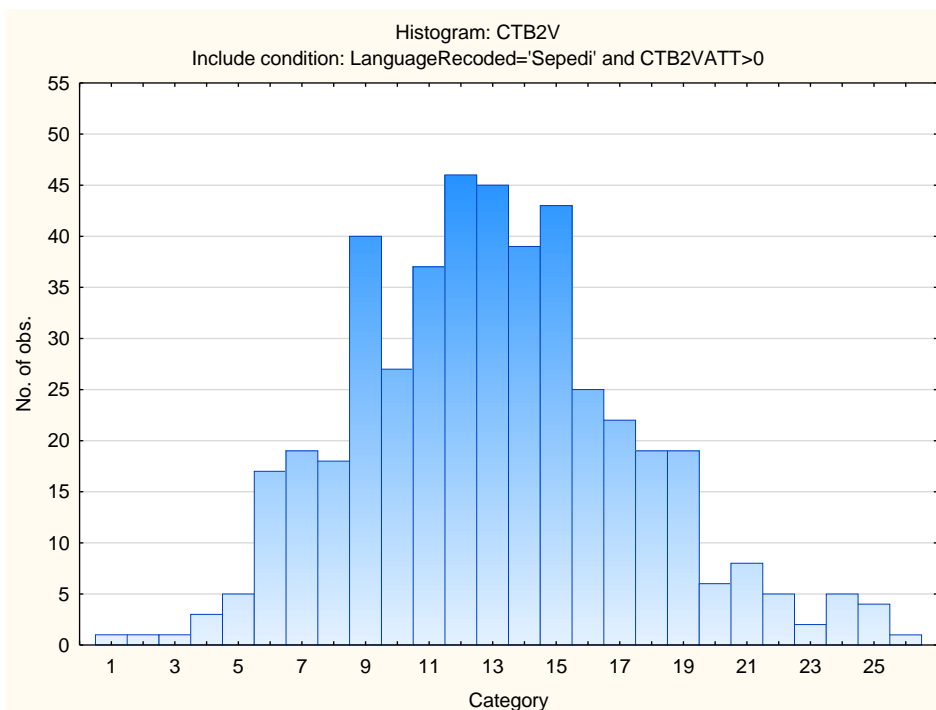


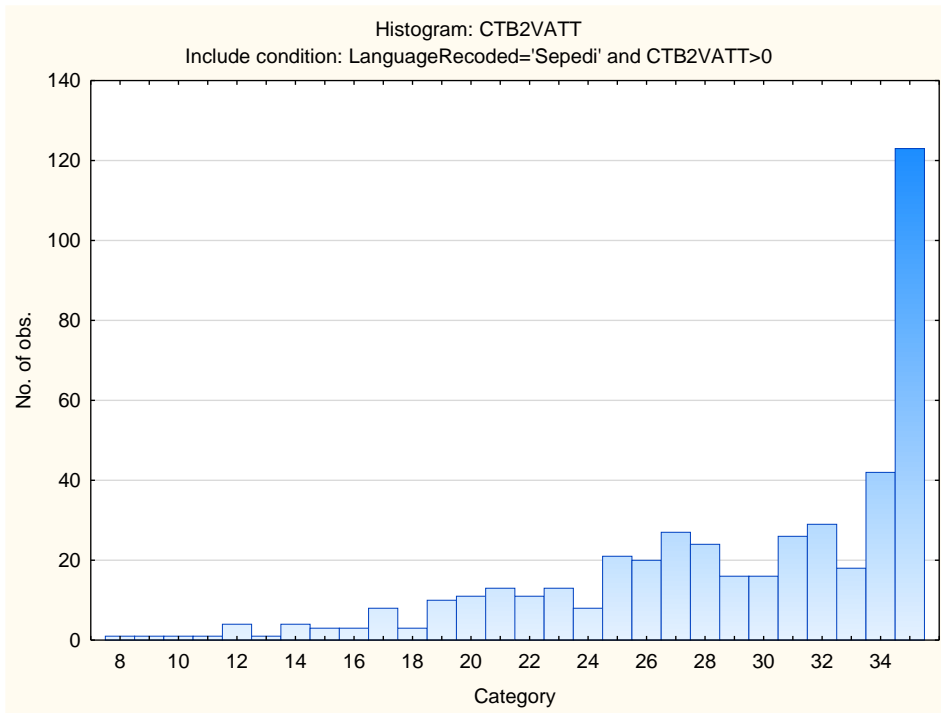
Variable	Descriptive Statistics: Spelling Subtest					
	Mean	Std.Dev	Minimum	Maximum	N	No.cases Missing
CTB2S	15.07506	3.760957	4.000000	24.00000	453	0
CTB2SATT	22.72627	2.491604	9.000000	24.00000	453	0





Variable	Descriptive Statistics: Verbal Subtest					
	Mean	Std.Dev	Minimum	Maximum	N	No.cases Missing
CTB2V	13.00437	4.372180	1.000000	28.000000	458	0
CTB2VATT	29.05022	6.129858	8.000000	35.000000	458	0





Stanine Table

Scales	Stanine Groups								
	S9_1	S9_2	S9_3	S9_4	S9_5	S9_6	S9_7	S9_8	S9_9
Verbal Reasoning	1-5	6-7	8-9	10-11	12-14	15-16	17-18	19-20	21-28
Numerical Ability	0-0	1-1	2-3	4-4	5-6	7-7	8-9	10-10	11-17
Clerical Checking - Verbal	3-4	5-6	7-7	8-8	9-9	10-11	12-12	13-13	14-19
Clerical Checking - Numerical	3-5	6-6	7-8	9-9	10-10	11-11	12-13	14-14	15-18
Clerical Checking - Total	6-11	12-13	14-15	16-18	19-20	21-23	24-25	26-27	28-35
Spelling	4-8	9-10	11-12	13-14	15-16	17-17	18-19	20-21	22-24