

Critical Reasoning Test Battery – item-banked (CRTBi) – Norm Group 3 South Africans, Afrikaans Language Group, Updated 2021

Sample Composition

The sample consisted of South Africans tested by Psytech South Africa and collaborators from June 2015 to March 2021. Since not all respondents completed all the subtests of the CRTBi, biographical characteristics are reported separately for the different subtests.

Critical Numerical Reasoning Test: Biographical Composition

Category	Frequency table: Sex			
	Count	Cumulative Count	Percent	Cumulative Percent
M	65	65	55.55556	55.5556
F	52	117	44.44444	100.0000
Missing	0	117	0.00000	100.0000

Category	Frequency table: Education			
	Count	Cumulative Count	Percent	Cumulative Percent
Grade 12	6	6	5.12821	5.1282
Post Graduate	37	43	31.62393	36.7521
Tertiary	60	103	51.28205	88.0342
Tertiary Cert / Trade	12	115	10.25641	98.2906
Missing	2	117	1.70940	100.0000

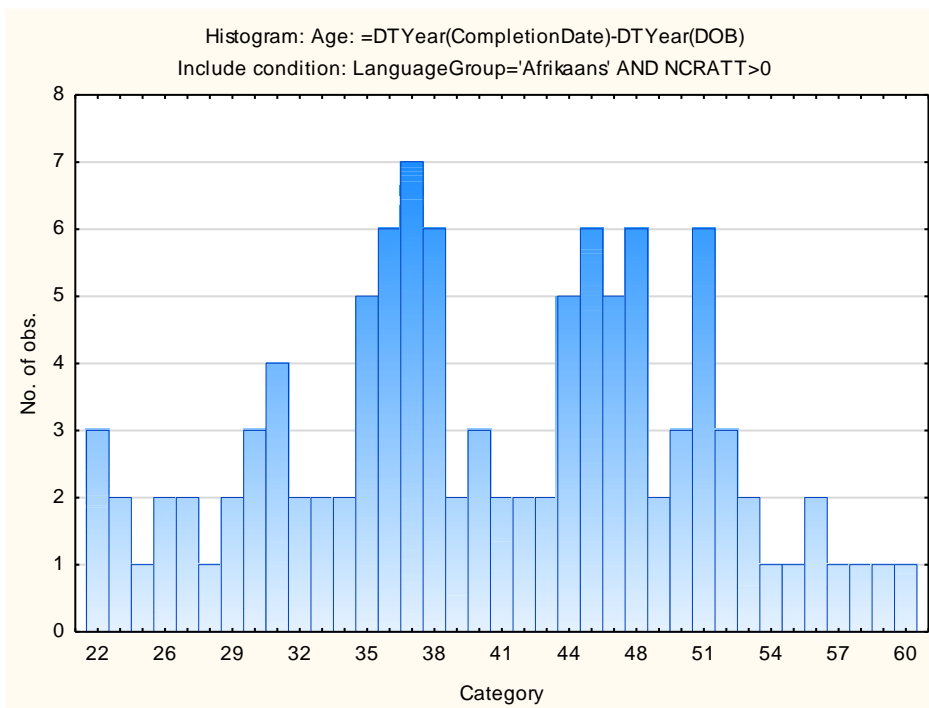
Category	Frequency table: Race			
	Count	Cumulative Count	Percent	Cumulative Percent
European	105	105	89.74359	89.7436
Coloured	4	109	3.41880	93.1624
African	5	114	4.27350	97.4359
Missing	3	117	2.56410	100.0000

Category	Frequency table: Language			
	Count	Cumulative Count	Percent	Cumulative Percent
Afrikaans	117	117	100.0000	100.0000

Category	Frequency table: Language			
	Count	Cumulative Count	Percent	Cumulative Percent
Missing	0	117	0.0000	100.0000

Category	Frequency table: Language Group			
	Count	Cumulative Count	Percent	Cumulative Percent
Afrikaans	117	117	100.0000	100.0000
Missing	0	117	0.0000	100.0000

Variable	Descriptive Statistics: Age					
	Mean	Std.Dev	Minimum	Maximum	N	No.cases Missing
Age	40.63551	9.299414	22.00000	60.00000	107	10



Critical Verbal Reasoning Test: Biographical Composition

Category	Frequency table: Sex			
	Count	Cumulative Count	Percent	Cumulative Percent
M	65	65	55.55556	55.5556
F	52	117	44.44444	100.0000
Missing	0	117	0.00000	100.0000

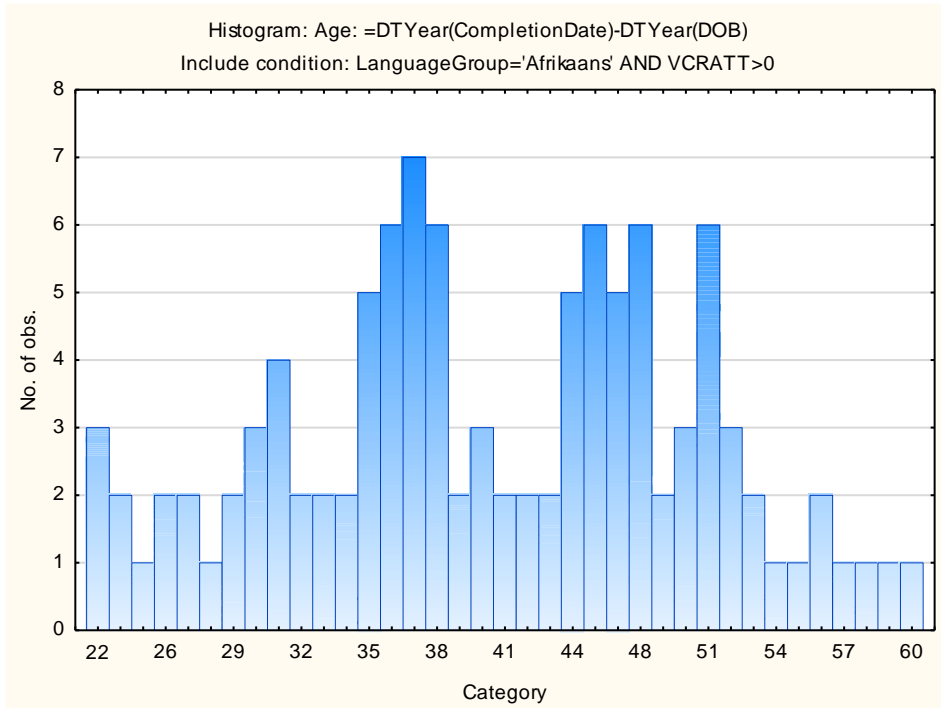
Category	Frequency table: Education			
	Count	Cumulative Count	Percent	Cumulative Percent
Grade 12	6	6	5.12821	5.1282
Post Graduate	37	43	31.62393	36.7521
Tertiary	60	103	51.28205	88.0342
Tertiary Cert / Trade	12	115	10.25641	98.2906
Missing	2	117	1.70940	100.0000

Category	Frequency table: Race			
	Count	Cumulative Count	Percent	Cumulative Percent
European	105	105	89.74359	89.7436
Coloured	4	109	3.41880	93.1624
African	5	114	4.27350	97.4359
Missing	3	117	2.56410	100.0000

Category	Frequency table: Language			
	Count	Cumulative Count	Percent	Cumulative Percent
Afrikaans	117	117	100.0000	100.0000
Missing	0	117	0.0000	100.0000

Category	Frequency table: Language Group			
	Count	Cumulative Count	Percent	Cumulative Percent
Afrikaans	117	117	100.0000	100.0000
Missing	0	117	0.0000	100.0000

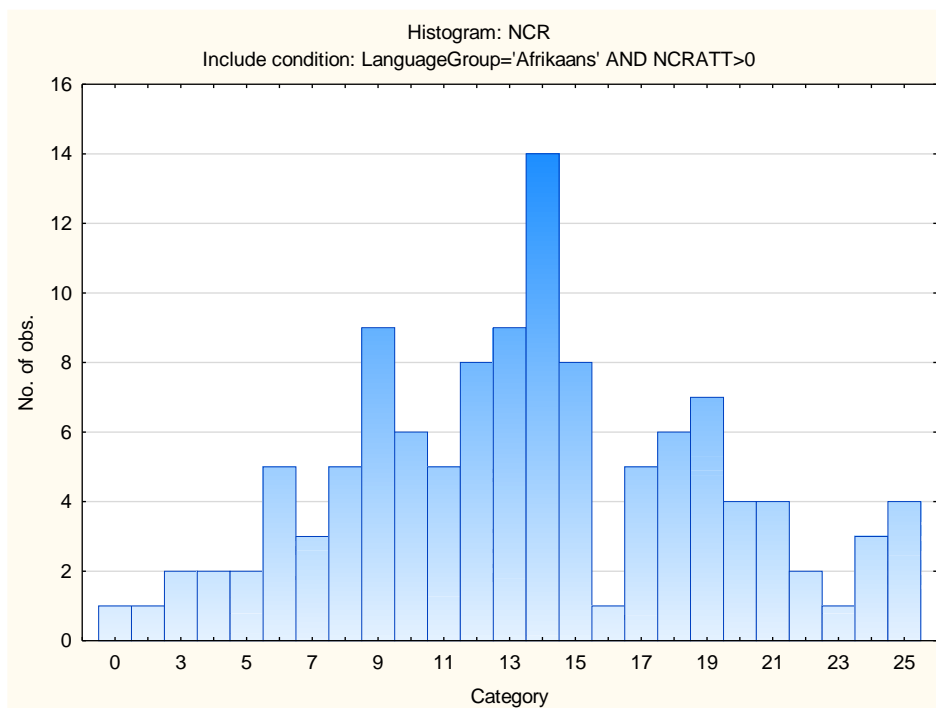
Variable	Descriptive Statistics: Age					
	Mean	Std.Dev	Minimum	Maximum	N	No.cases Missing
Age:	40.63551	9.299414	22.00000	60.00000	107	10



Descriptive Statistics and Frequency Distributions on Critical Reasoning Test Battery Subtests

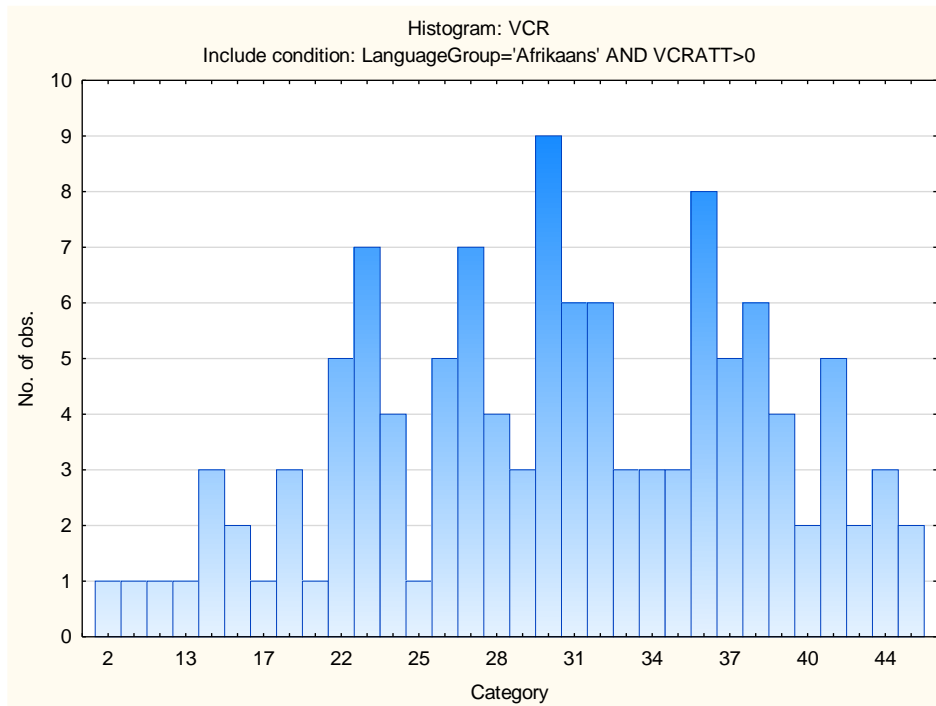
Critical Numerical Reasoning Test

Variable	Descriptive Statistics					
	Mean	Std.Dev	Minimum	Maximum	N	No.cases Missing
NCR	13.56410	5.599237	0.00	25.00000	117	0



Critical Verbal Reasoning Test

Variable	Descriptive Statistics					No.cases Missing
	Mean	Std.Dev	Minimum	Maximum	N	
VCR	30.07692	8.361605	2.000000	45.00000	117	0



Stanine table

Scales	Stanine Groups								
	S9_1	S9_2	S9_3	S9_4	S9_5	S9_6	S9_7	S9_8	S9_9
Critical Verbal Reasoning	2-15	16-19	20-23	24-27	28-32	33-36	37-40	41-44	45-45
Critical Numerical Reasoning	0-3	4-6	7-9	10-12	13-14	15-17	18-20	21-23	24-25