

# Occupational Interest Profile (OIP) Reliability: South Africans, Sepedi Language Group, Updated 2020

---

## Composition of the Sample

The sample consisted of South Africans tested by Psytech South Africa and collaborators during the period up to March 2020, both on GeneSys for Windows (up to June 2015) and GeneSys online (up to June 2019).

## Gender Composition of the Sample

Category	Frequency table: Sex			
	Count	Cumulative Count	Percent	Cumulative Percent
F	336	336	66,40316	66,4032
M	165	501	32,60870	99,0119
U	5	506	0,98814	100,0000
Missing	0	506	0,00000	100,0000

## Educational Composition of the Sample

Category	Frequency table: Education			
	Count	Cumulative Count	Percent	Cumulative Percent
Grade 12	131	131	25,88933	25,8893
Tertiary Cert / Trade	25	156	4,94071	30,8300
Tertiary	25	181	4,94071	35,7708
Post Graduate	21	202	4,15020	39,9209
< Matric	288	490	56,91700	96,8379
Missing	16	506	3,16206	100,0000

## Language Composition of the Sample

Category	Frequency table: Language			
	Count	Cumulative Count	Percent	Cumulative Percent
Sepedi	506	506	100,0000	100,0000
Missing	0	506	0,0000	100,0000

## Language Group Composition of the Sample

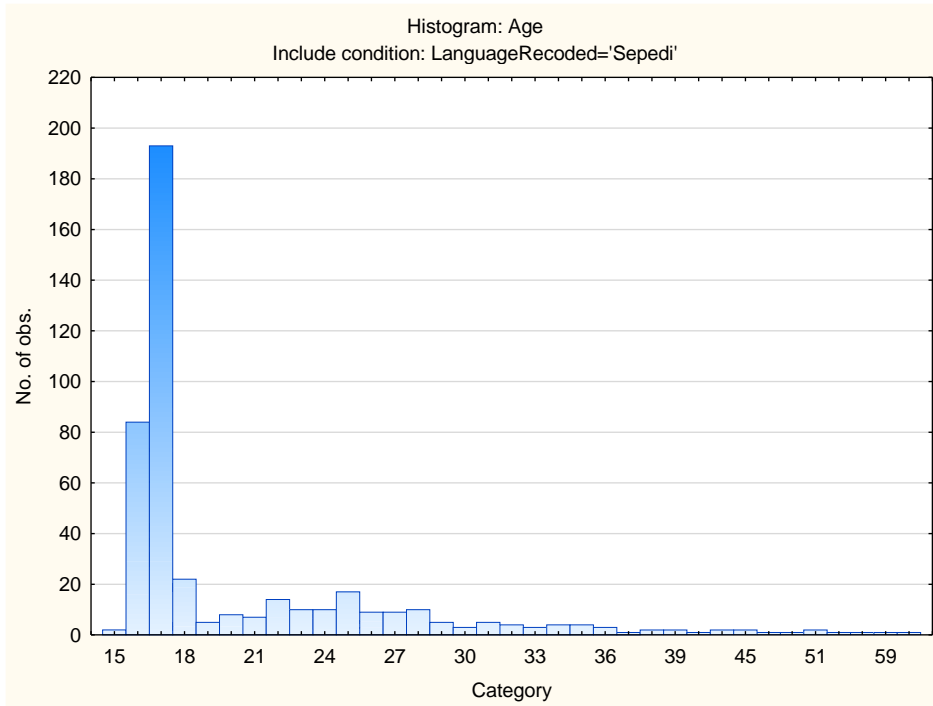
Category	Frequency table: Language Group			
	Count	Cumulative Count	Percent	Cumulative Percent
Indigenous	506	506	100,0000	100,0000
Missing	0	506	0,0000	100,0000

## Racial Composition of the Sample

Category	Frequency table: Race			
	Count	Cumulative Count	Percent	Cumulative Percent
African	493	493	97,43083	97,4308
European	1	494	0,19763	97,6285
Coloured	1	495	0,19763	97,8261
Asian	2	497	0,39526	98,2213
Missing	9	506	1,77866	100,0000

## Age Composition and Distribution of the Sample

Variable	Descriptive Statistics: Age					
	Mean	Std.Dev	Minimum	Maximum	N	No.cases Missing
Age	20,58797	7,205958	15,00000	60,00000	449	57



## Internal Consistency Reliability on OIP Scales

<b>Scale</b>	<b>Scale description</b>	<b>Cronbach Alpha</b>
<b>VEN</b>	Need for excitement	0,67
<b>PHLEG</b>	Need for stability	0,81
<b>RAD</b>	Need for change	0,71
<b>GREGAR</b>	Need for people	0,69
<b>ASSERT</b>	Need for control	0,79
<b>PERS</b>	Persuasive	0,79
<b>SCI</b>	Scientific	0,80
<b>PRA</b>	Practical	0,72
<b>ADMIN</b>	Administrative	0,78
<b>NUR</b>	Nurturing (caring)	0,77
<b>ART</b>	Artistic	0,84
<b>LOG</b>	Logical (computational)	0,79